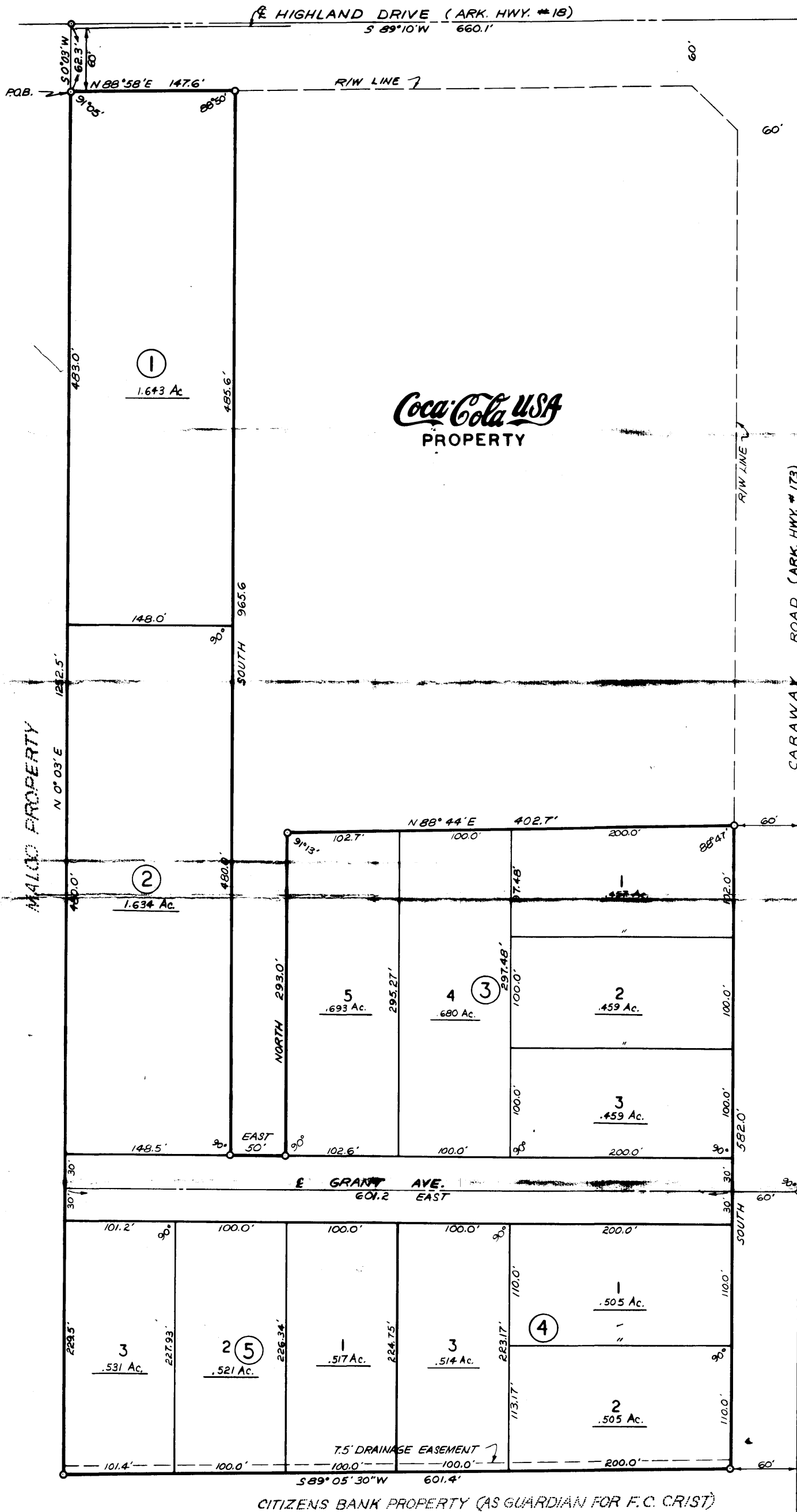


NE COR. NE 1/4, NE 1/4
SEC. 29, T14N, R4E



DESCRIPTION:

A part of the East Half of the Northeast Quarter of the Northeast Quarter of Section 29, Township 14 North, Range 4 East, Craighead County, Arkansas, being more particularly described as follows: Commencing at the Northeast Corner of the Northeast Quarter of the Northeast Quarter of said Section 29; thence South 89°10' West along the North line of said Section 29 a distance of 660.1 feet; thence South 0°03' West 62.3 feet to a point on the South right-of-way line of Arkansas Highway #18 and the point of beginning proper; thence North 88°58' East along said right-of-way line 147.6 feet; thence South 965.6 feet; thence East 50.0 feet; thence North 293.0 feet; thence North 88°44' East 402.7 feet to the West right-of-way line of Arkansas Highway #173; thence South 582.0 feet along said right-of-way line; thence South 89°05'30" West 601.4 feet; thence North 0°03' East 1252.5 feet to the point of beginning proper, containing 9.956 acres, more or less.

SURVEYOR'S CERTIFICATION:

I hereby certify that the plat shown and described hereon is the result of a survey made in April, 1977, that it is a true and accurate survey and the monuments were found or set as noted.

ASSOCIATED ENGINEERING CO., INC.
JONESBORO, ARKANSAS

H. S. Johnson, L.S.#161 Date 6-1-1977

OWNER'S CERTIFICATION:

We hereby certify that we are the owners of the property shown and described hereon, that we adopt the plan of subdivision and dedicate perpetual use of all streets and easements as noted.

B. B. VANCE & SONS, INC.
JONESBORO, ARKANSAS

BILL OF ASSURANCE:

The property covered by this plat is subject to limitations, restrictions and easements contained in a Bill of Assurance dated _____, and recorded in Book _____, Page _____, in the office of the Circuit Court Clerk and Ex-Officio Recorder of Craighead County, Arkansas, and said Bill of Assurance is made a part hereof by reference the same as if set out in full on this Plat.

METROPOLITAN AREA PLANNING COMMISSION
Jonesboro - Craighead County

- ☐ PRELIMINARY APPROVAL
- ☐ FINAL APPROVAL
- ☐ AS NOTED
- ☐ DISAPPROVED
- ☐ Tabled

Chairman
Secretary
Date

VANCE'S 2ND ADDITION

A true copy of the original as filed for JONESBORO, ARKANSAS

record this 5 day of July, 1977 at 9:00 A.M.

Opie Chambers, Clerk By *Michael B. Bunker D.C.*

Plat Cabinet A Page 10

ASSOCIATED ENGINEERING
COMPANY, INC.
JONESBORO, ARKANSAS