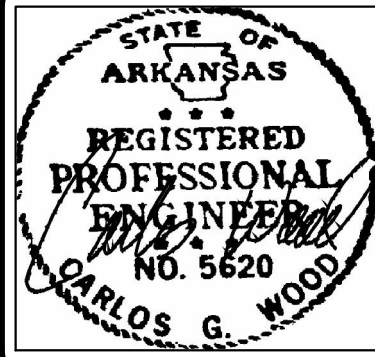


E-MAIL: h&shime_butch@yahoo.com



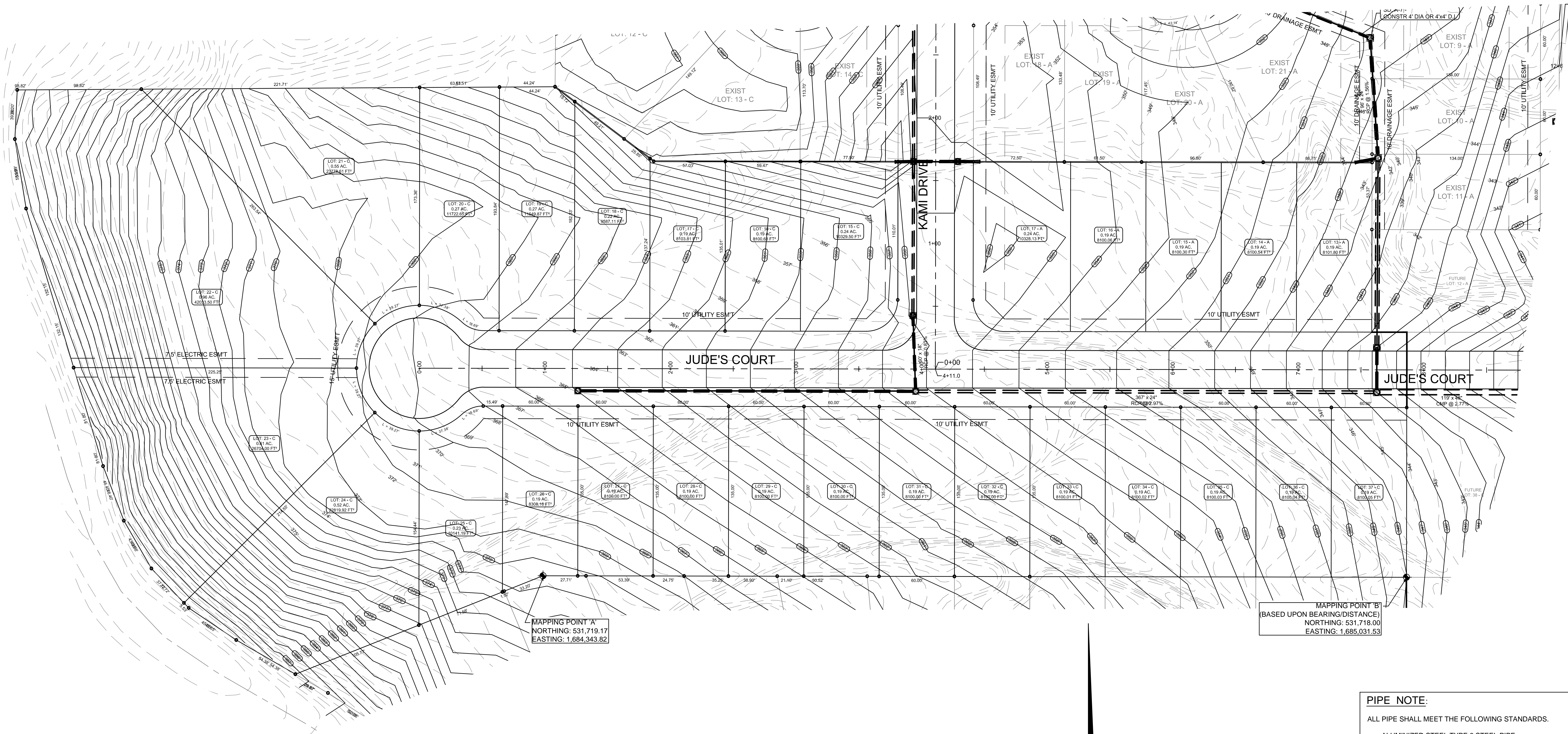
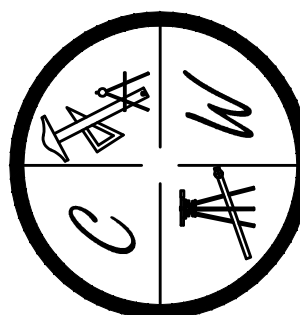
JUDE'S CROSSING PHASE V
JONESBORO, AR
TOPOGRAPHY &
DRAINAGE PLAN

DATE: 7/19/16

REV:

DRAWN BY: BGW

CARLOS WOOD, P.E.
ENGINEERING CONSULTANT
148 CR 375
BONO, AR 72416
PHONE/FAX: (870) 972-8335
EMAIL: WOODENR@SBCGLOBAL.NET
WEBSITE: WWW.WOODENR.COM



PIPE NOTE:

ALL PIPE SHALL MEET THE FOLLOWING STANDARDS.

- ALUMINIZED STEEL TYPE 2 STEEL PIPE
- ASTM A-929
- ASTM A-760
- RCP CLASS III OR CLASS IV
- ASTM C-76
- ASTM C-506
- ASTM C-507

NOTE:

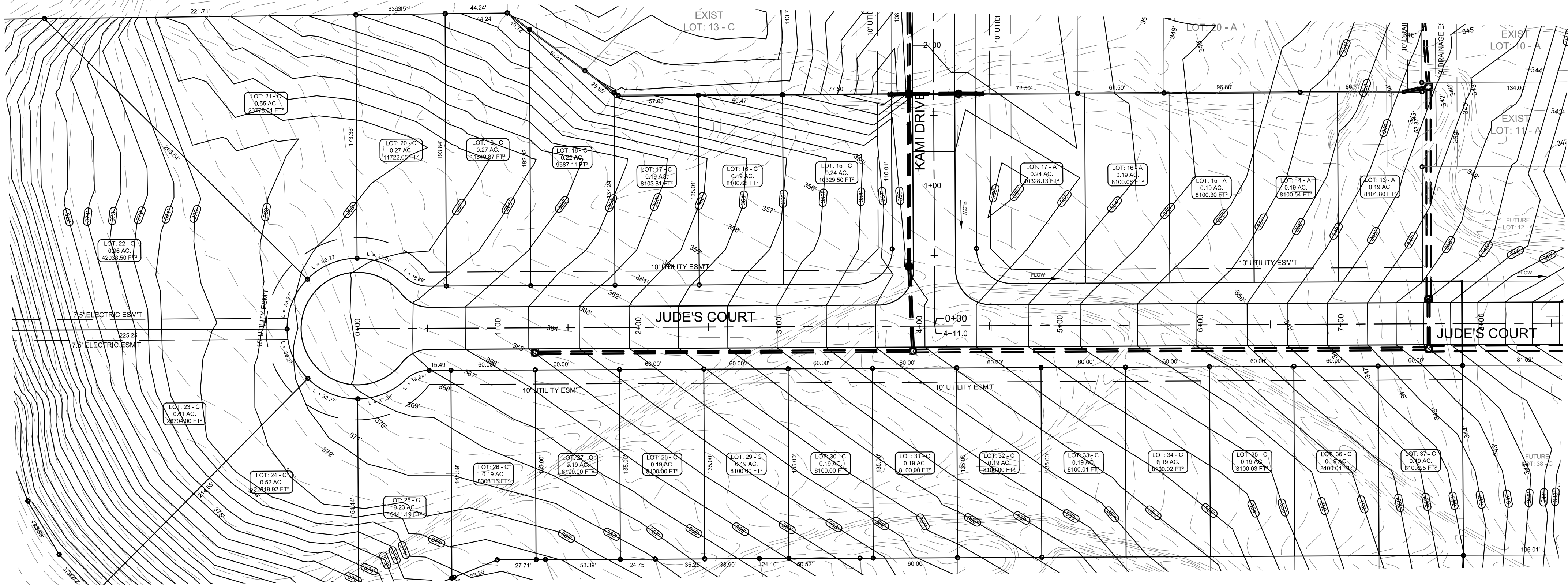
DEVELOPER SHALL OBTAIN GRADING PERMIT FROM THE CITY OF JONESBORO ENGINEERING DEPARTMENT PRIOR TO COMMENCING EARTHWORK AND/OR CLEARING OPERATIONS.

DEVELOPER SHALL OBTAIN REQUIRED ADEQ PERMIT PRIOR TO COMMENCING WORK ON THE SITE. PREPARE A SWPP PLAN, AND DISPLAY THEM FOR PUBLIC ACCESS AT THE SITE.

SURVEY CONTROL REFERENCE MARKS:
JONESBORO MONUMENT # 89
JONESBORO MONUMENT # 43
VERTICAL CONTROL IS NAVD 88
HORIZONTAL CONTROL IS NAD 83

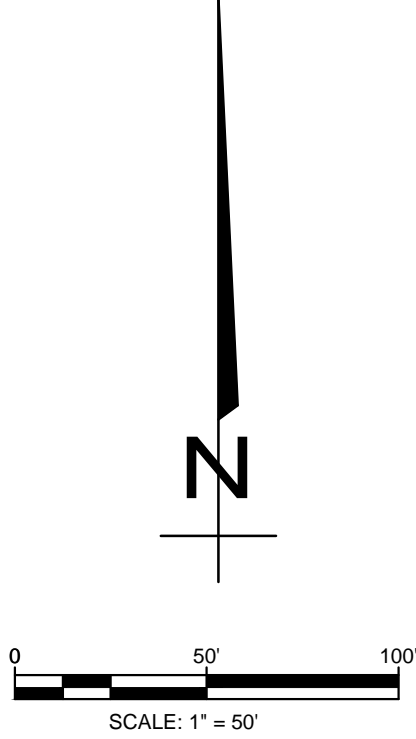
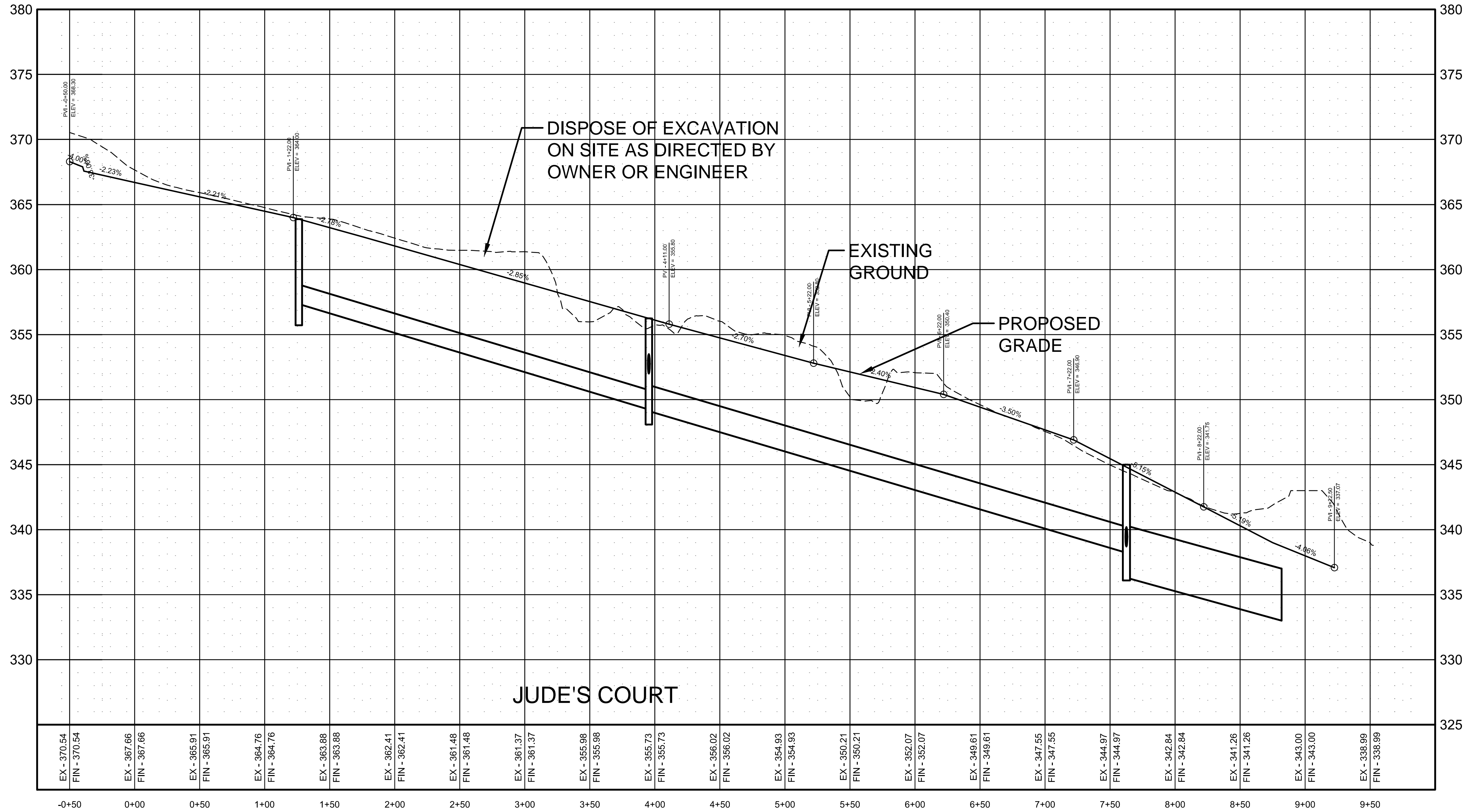
LEGEND

- CURB
- 25' — EXISTING CONTOUR
- 25' — PROPOSED CONTOUR
- STORM DRAIN INLET
- STORM DRAIN PIPE
- BENCHMARK



EX = EXISTING GROUND ELEVATION
FIN = FINISHED ELEVATION AT CENTERLINE

PROFILE SCALE:
HORIZONTAL: 1" = 50'
VERTICAL: 1" = 5'



LEGEND

- CURB
- EXISTING CONTOUR
- PROPOSED CONTOUR
- WATER METER
- FIRE HYDRANT
- BLOW-OFF ASSEMBLY
- GATE VALVE
- WATER LINE
- SANITARY SEWER LINE
- SANITARY SEWER MANHOLE
- STORM DRAIN INLET
- STORM DRAIN PIPE

STR-2

STATE OF ARKANSAS
REGISTERED PROFESSIONAL ENGINEER
NO. 5620
CARLOS G. WOOD

JUDE'S CROSSING PHASE V

JONESBORO, AR

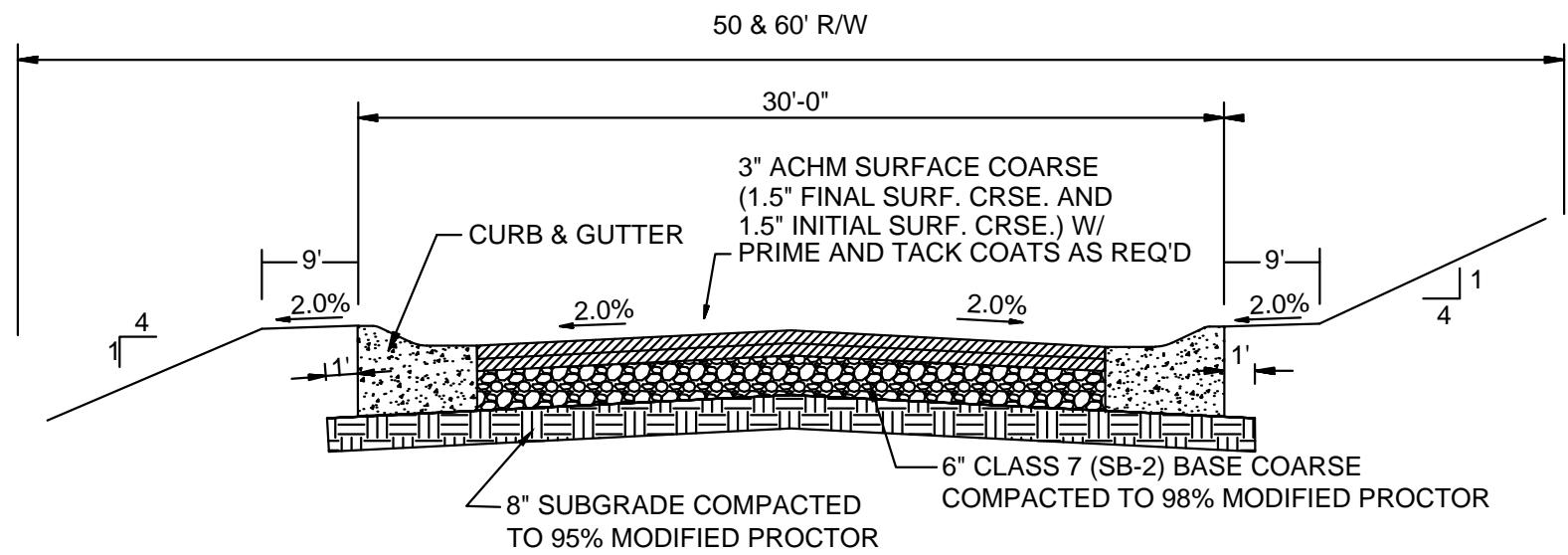
JUDE'S COURT
STREET PALN & PROFILE

DATE: 6/29/16
REV:

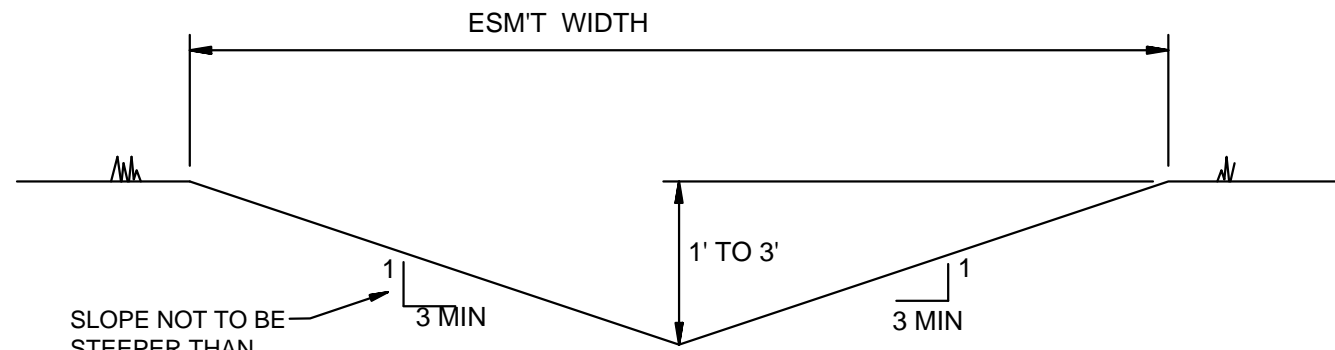
DRAWN BY: BGW

CARLOS WOOD, P.E.
ENGINEERING CONSULTANT
148 CR 375
BONO, AR 72416
PHONE/FAX: (870) 972-8335
EMAIL: WOODENR@SBCGLOBAL.NET
WEBSITE: WWW.WOODENR.COM

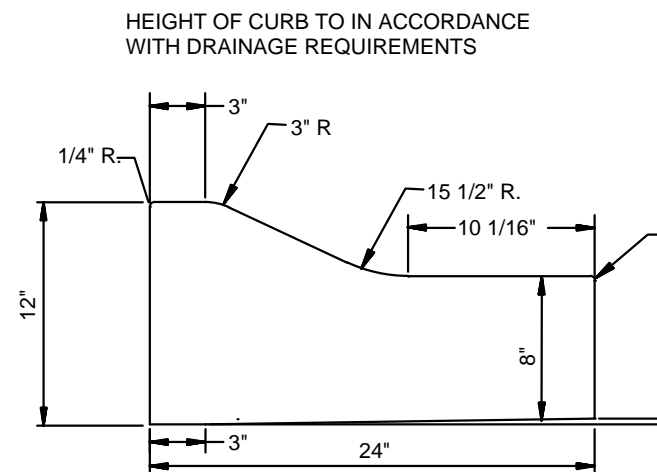
C W



TYPICAL SECTION - INTERIOR STREETS
N.T.S.



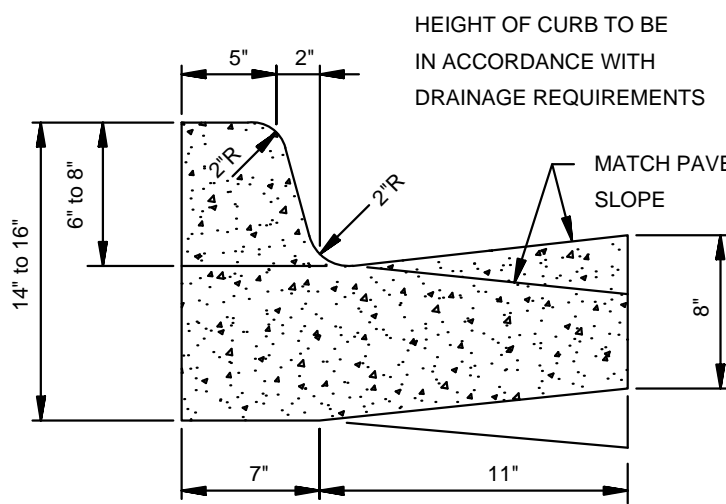
'A' TYPICAL DITCH DETAIL
N.T.S.



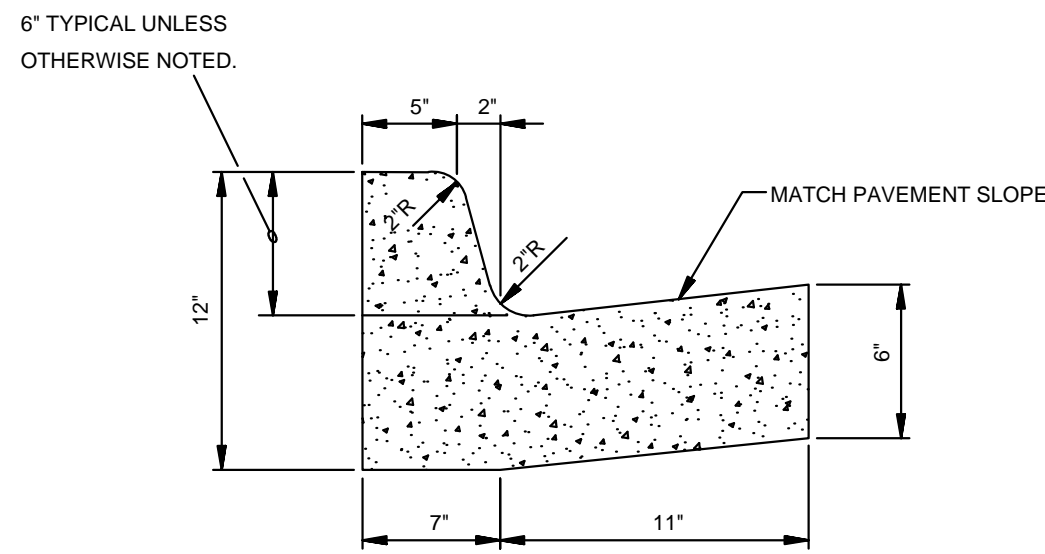
TYPE 'B' CURB & GUTTER
N.T.S.

NOTE: CONTRACTION AND EXPANSION JOINTS SHALL BE CONSTRUCTED IN ACCORDANCE WITH THE CITY OF JONESBORO SPECIFICATIONS

NO DRIVEWAY CUTS ALLOWED WITH THIS TYPE OF CURB



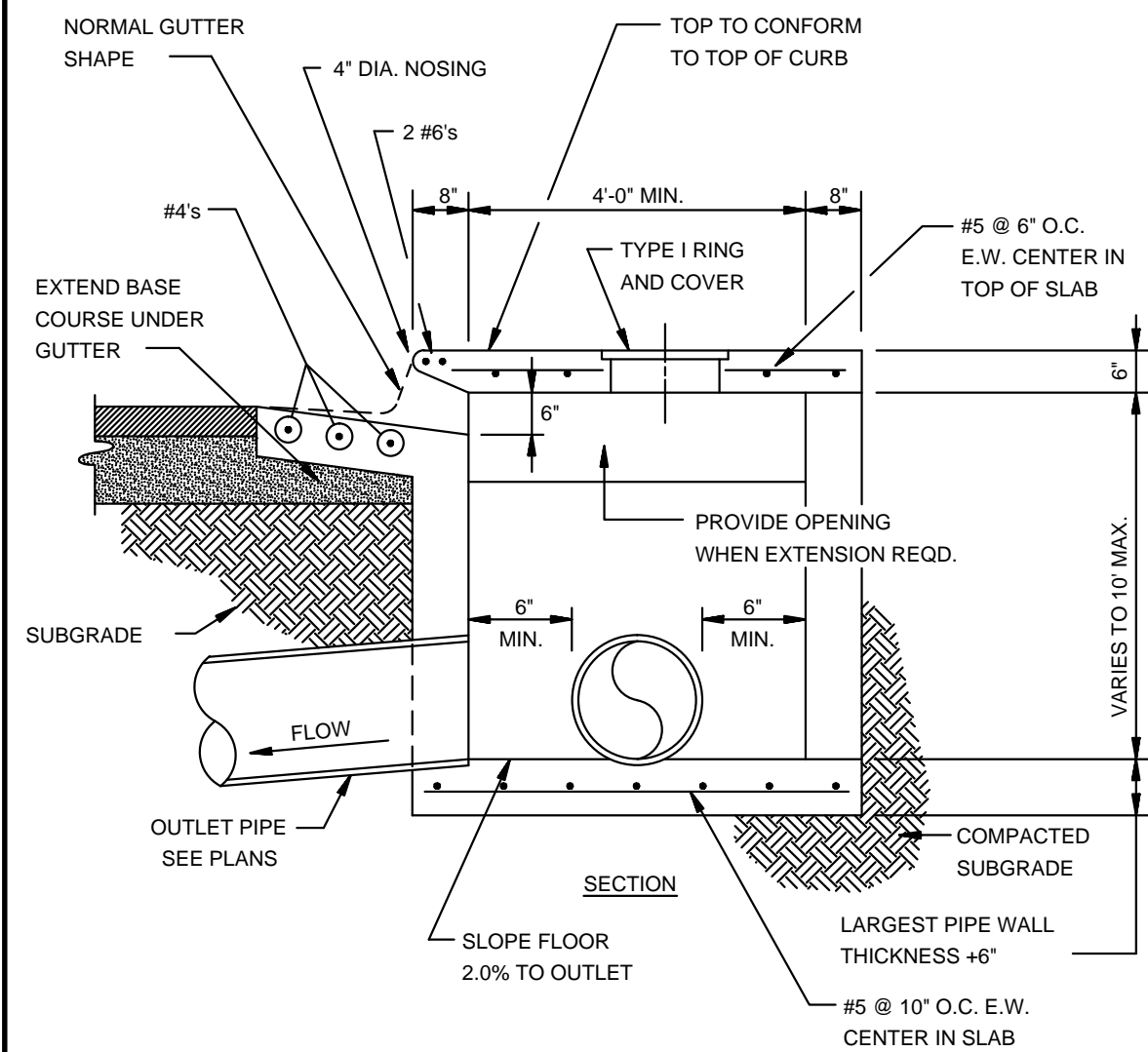
TYPE 'A-18' (BARRIER) ARTERIAL STREETS



TYPE 'A-18' (BARRIER) RESIDENTIAL & COLLECTOR STREETS

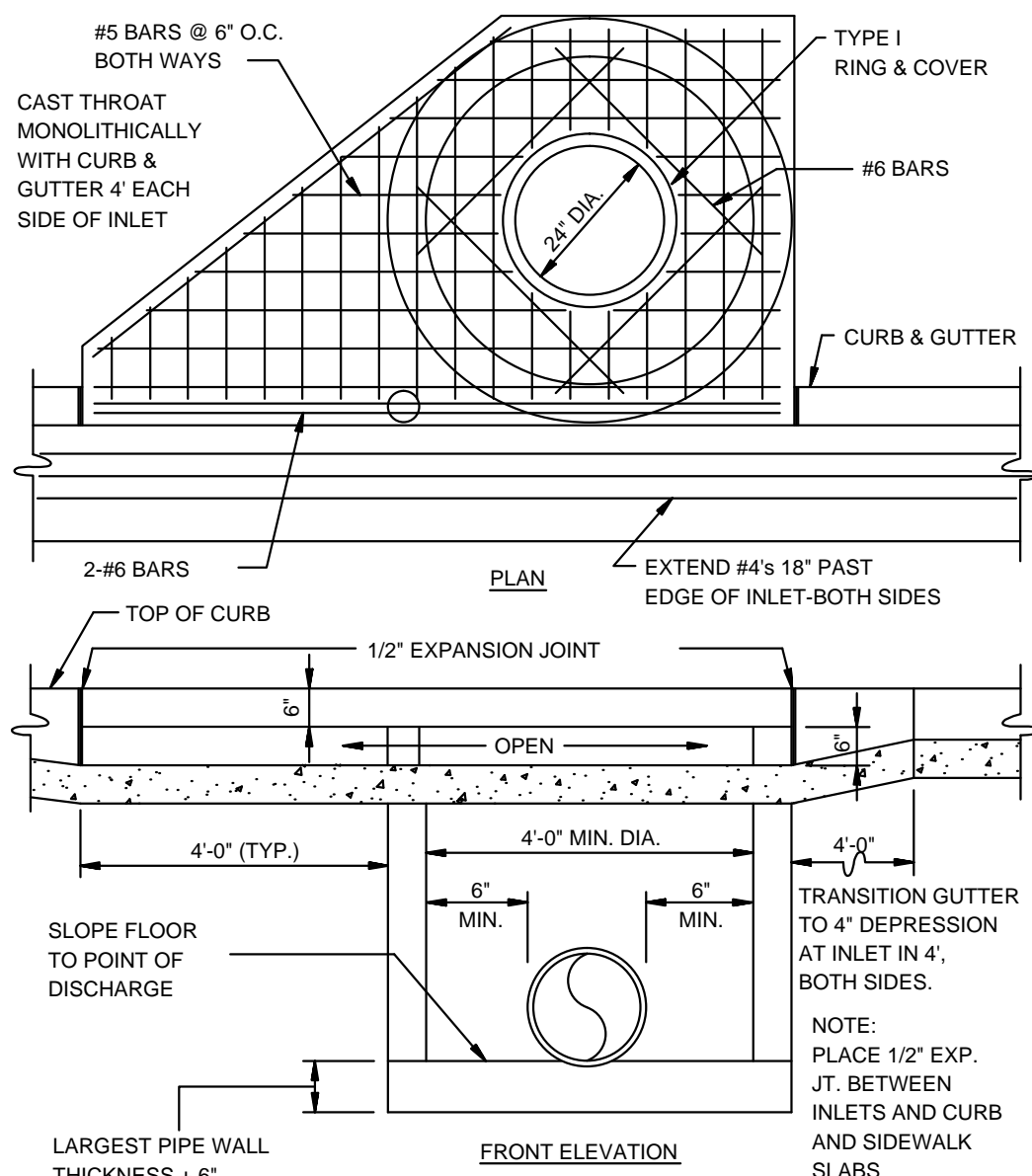
COMBINATION CURB & GUTTER
N.T.S.

NOTE: CONTRACTION AND EXPANSION JOINTS SHALL BE CONSTRUCTED IN ACCORDANCE WITH THE PLANS AND SPECIFICATIONS.

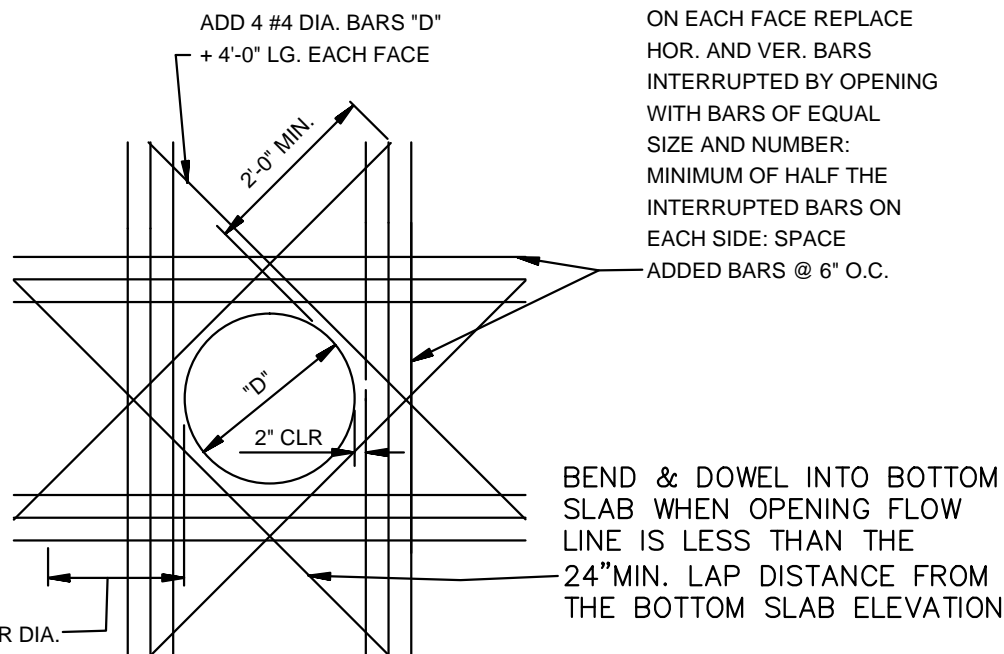


SECTION - CIRCULAR CURB INLET
N.T.S.

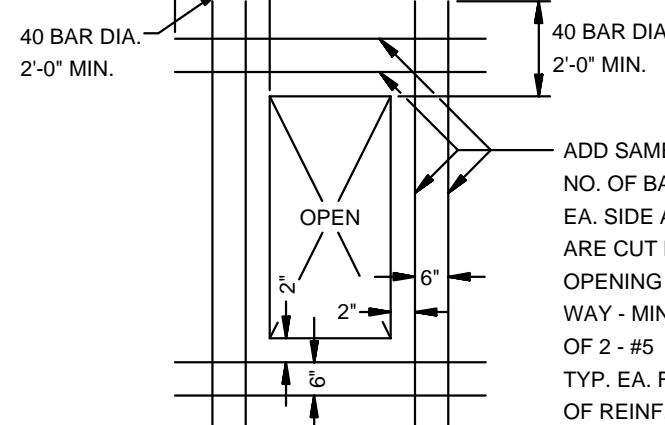
NOTE: INLETS MORE THAN 3'-0" DEEP SHALL HAVE STANDARD MANHOLE STEPS PLACED AT 15" O.C. - MANHOLE FRAME AND COVER SHALL BE PLACED ADJACENT TO THE WALL WITH THE STEPS.



**CIRCULAR CURB INLET
W/ INLET EXTENSION**
N.T.S.



**ADDED REINFORCEMENT AT
ROUND OPENING IN WALL OR SLAB**
N.T.S.



**ADDED REINFORCEMENT AT
RECTANGULAR OPENING
IN WALL OR SLAB**
N.T.S.

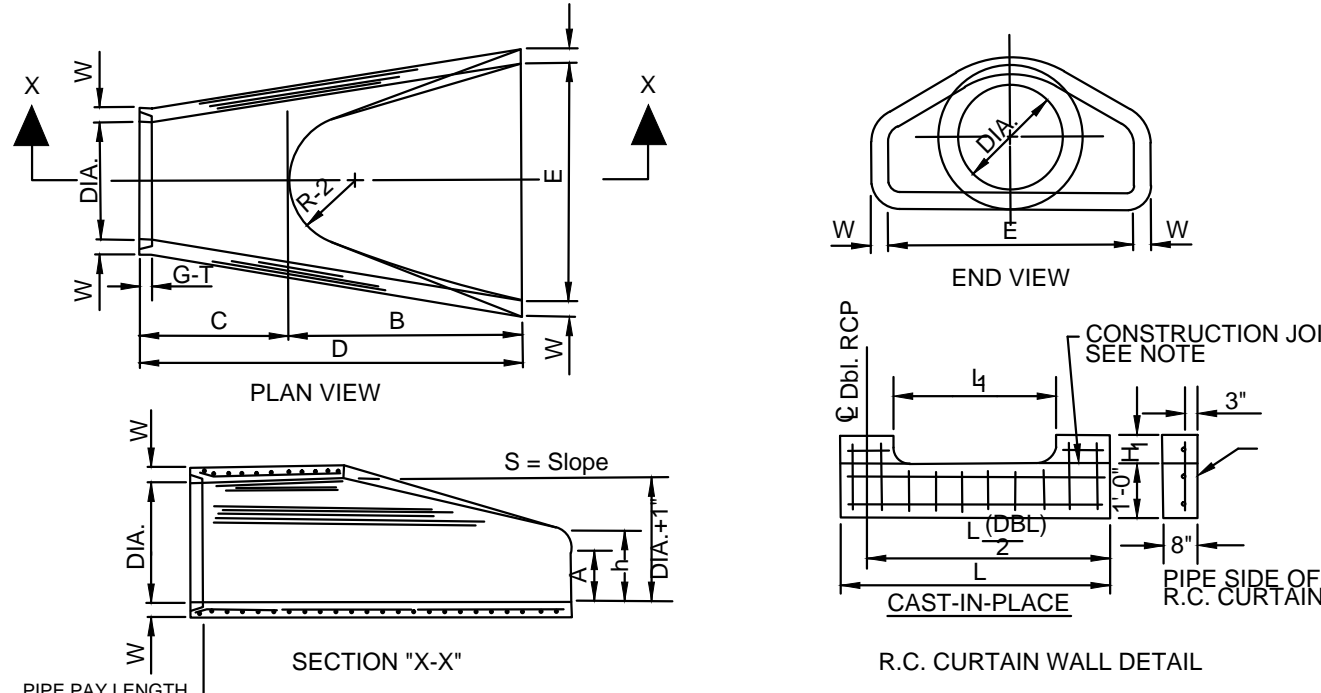
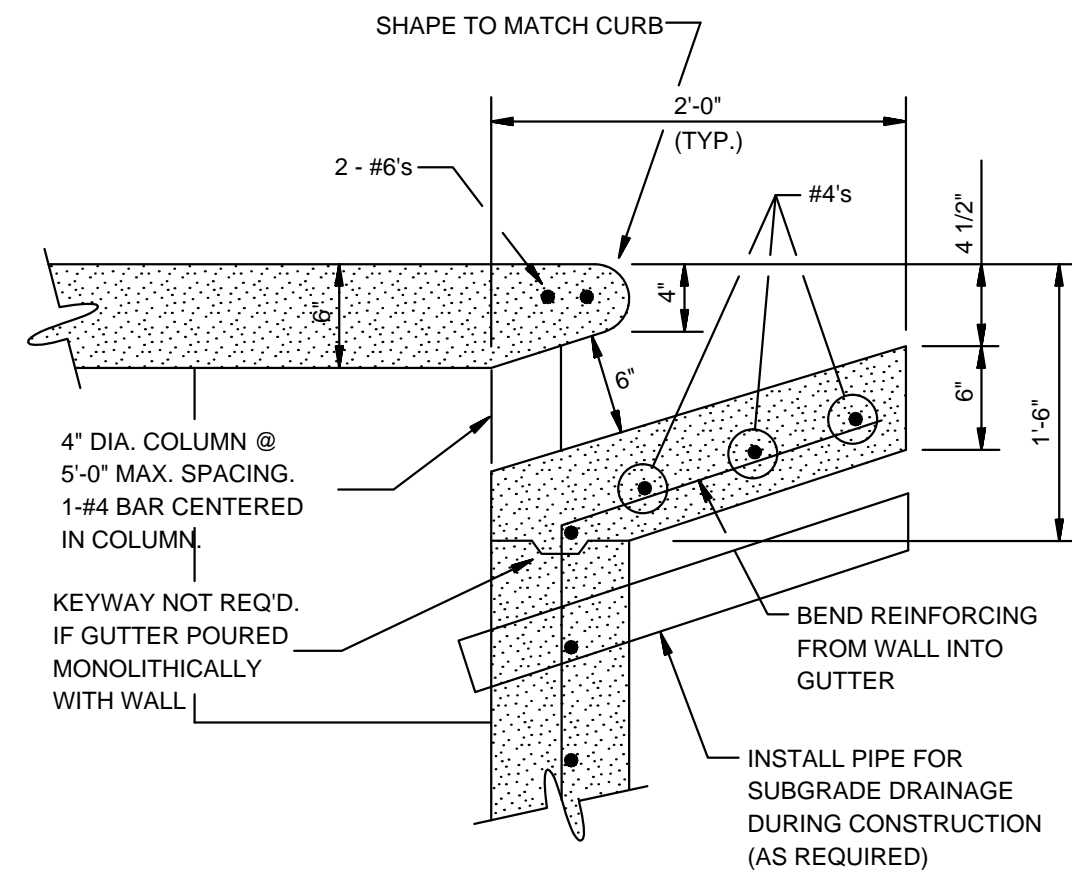


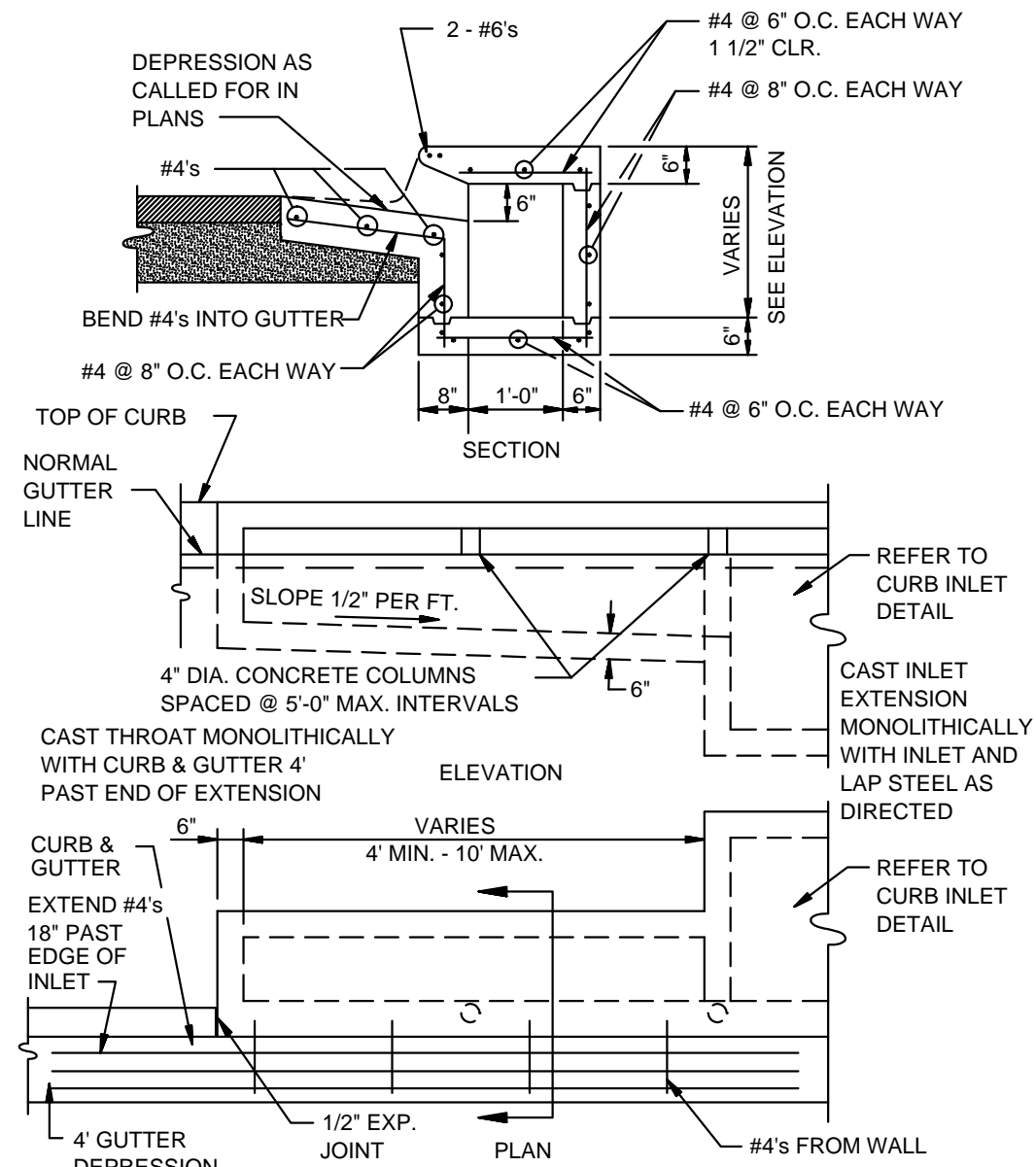
TABLE OF DIMENSIONS													
DIA. WALL	A	B	C	D	E	S	DIA. H	P	R-1	R-2	G-1	W	h
18"	2 1/2"	9"	2-3"	3-10"	6-11"	3-6"	3 1/2"	10"	29"	15 1/2"	12"	2"	1050
24"	3"	9 1/2"	3-7 1/2"	6-8"	6-11 1/2"	4-9"	3 1/2"	25"	33 3/16"	16 13/16"	14"	2 1/2"	1600
30"	3 1/2"	10"	4-8"	10 1/2"	6-13 1/2"	5-9"	3 1/2"	30"	39"	18 3/4"	15"	3-10"	1900
36"	4"	1-3"	5-5"	2-10 3/4"	8-13 3/4"	6-9"	3 1/2"	37"	47 13/16"	24 9/16"	20"	3 1/2"	2400
42"	4 1/2"	1-3"	5-5"	2-11"	8-2"	7-9"	3 1/2"	45"	53 7/8"	27 7/8"	22"	3 1/2"	2800
48"	5"	1-3"	5-5"	2-11"	8-2"	7-9"	3 1/2"	49"	58 1/2"	30 1/2"	24"	3 1/2"	3200
54"	5 1/2"	2-4"	6-6"	1-10"	8-4"	7-6"	3 1/2"	55"	65 1/2"	33 1/8"	24"	4"	3750
60"	6"	2-10"	6-6"	1-10"	8-4"	8-9"	3 1/2"	61"	72 1/2"	36 1/2"	24"	4"	4200
72"	7"	3-10"	6-6"	1-10"	8-4"	8-9"	3 1/2"	73"	77 13/16"	38 15/16"	24"	5"	5250

- NOTES:
- The portion of the R.C. Curtain Wall beneath the Flared End Section (Lower 1'-0") shall be placed monolithically. The Flared End Section shall then be set in place and the remaining portions of the R.C. Curtain Wall placed.
 - All reinforcing steel are #4 Bars at 6" O.C.
 - No separate payment will be made for the Curtain Walls. They shall be considered subsidiary to the Flared End Sections.
 - Tongue End On Upstream Section. Groove End On Downstream Section.

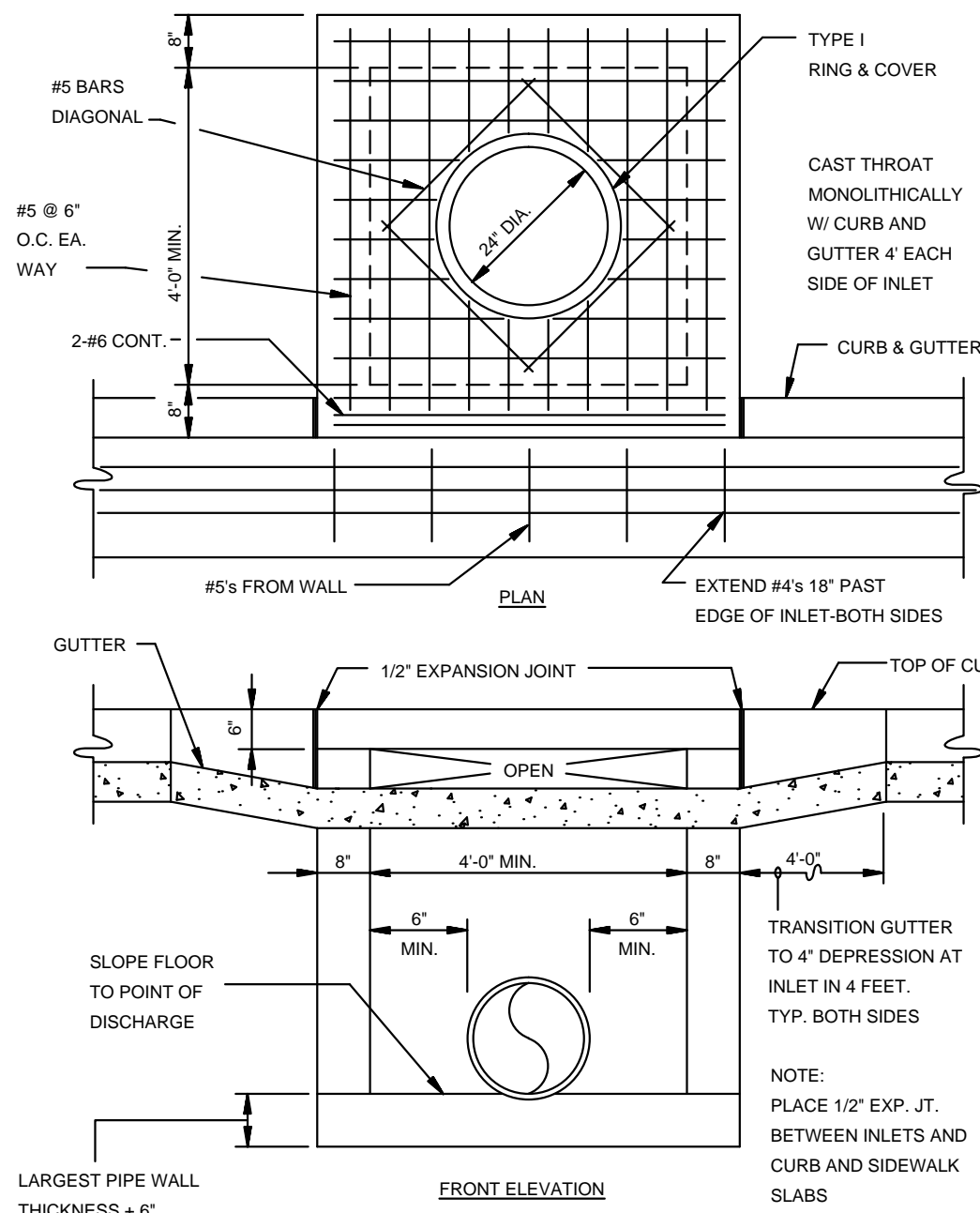
**FLARED END SECTION DETAIL FOR
REINFORCED CONCRETE PIPE CULVERT**
N.T.S.



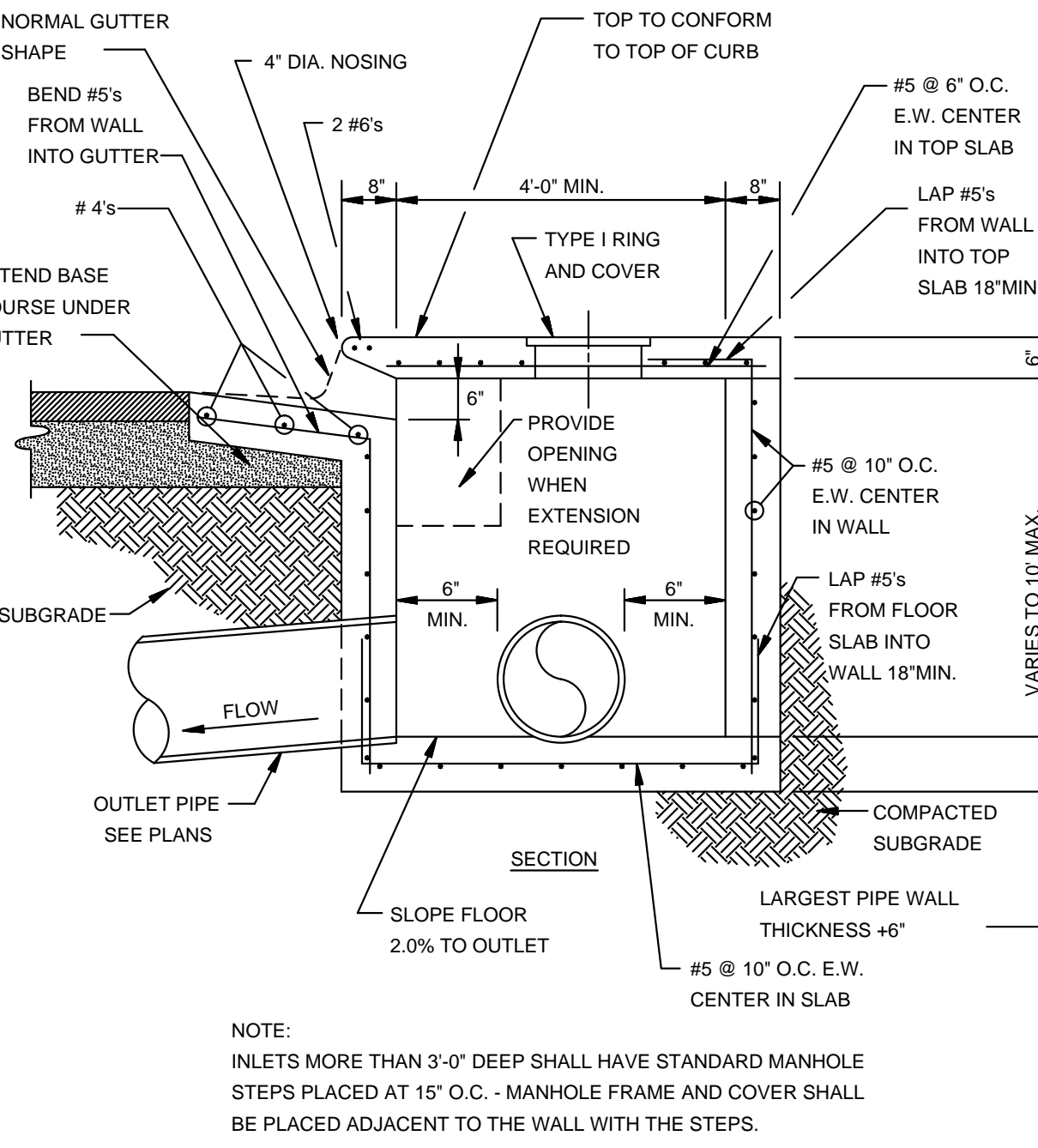
CURB OPENING
N.T.S.



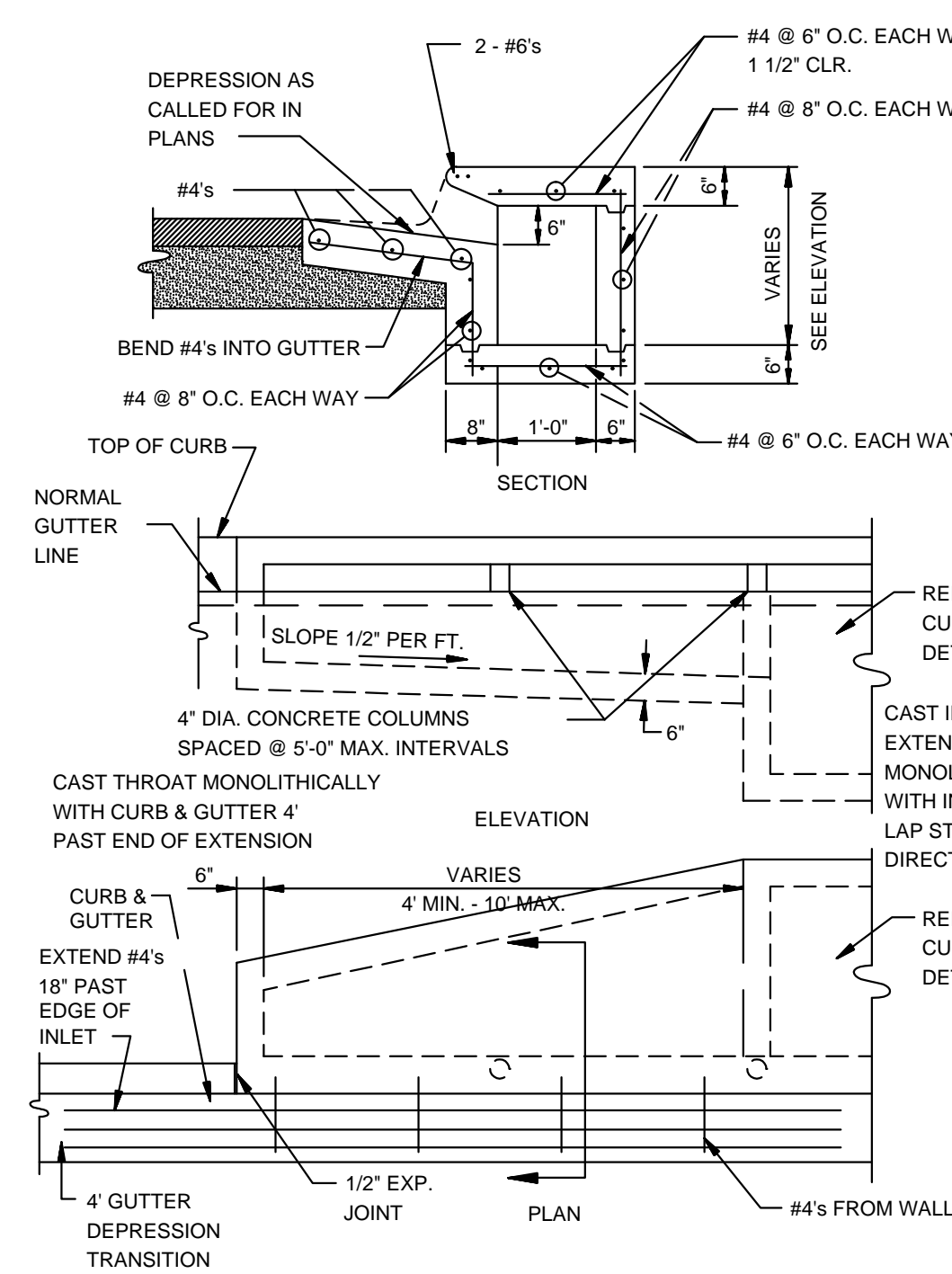
RECTANGULAR CURB INLET EXTENSION
N.T.S.



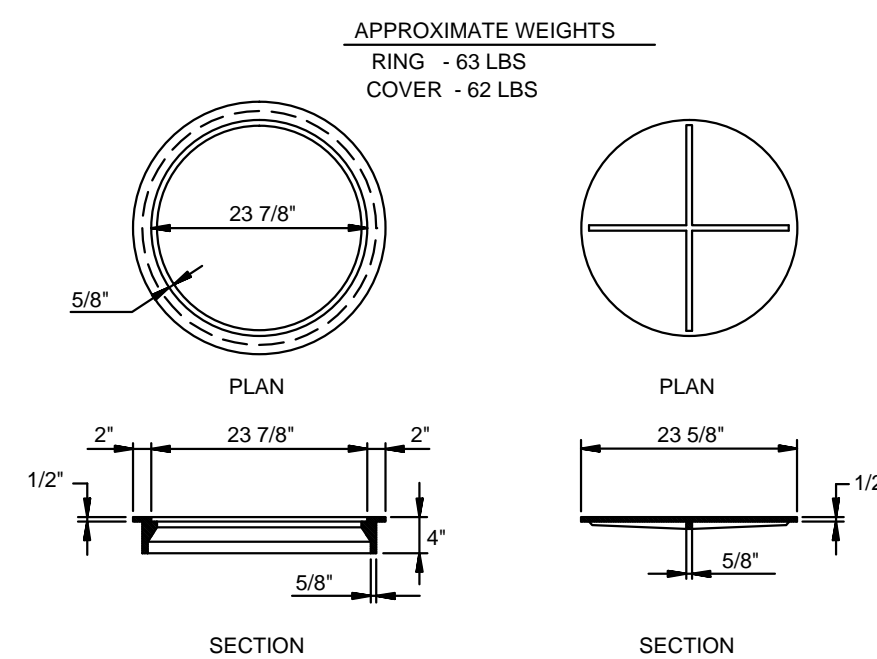
RECTANGULAR CURB INLET
N.T.S.



SECTION - TYPICAL CURB INLET - TYPE 'A'
N.T.S.

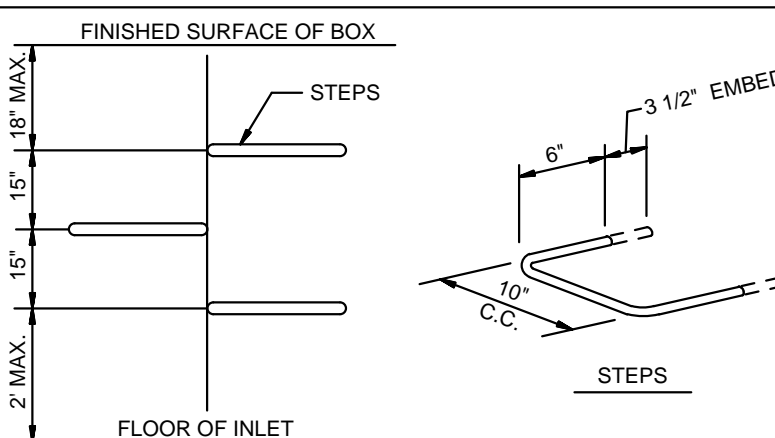


ALTERNATE CURB INLET EXTENSION
N.T.S.



TYPE I RING & COVER
N.T.S.

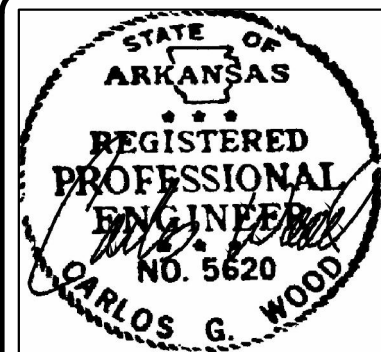
NOTE: TYPE I FRAME AND COVER PERMITTED ONLY ON STRUCTURES NOT SUBJECT TO VEHICULAR TRAFFIC.



MANHOLE /INLET STEPS
N.T.S.

- STEPS SPECIFICATIONS:
- MANHOLE STEPS: CORROSION RESISTANT, COATED AND REINFORCED WITH STEEL PER ASTM C-478. STEEL REINFORCING MINIMUM 1/2" DIAMETER.
 - CAPABLE OF SUPPORTING MINIMUM 500 LB. LOAD.
 - NON-SLIP TEXTURED TREADS
 - REQUIRED IN ALL STRUCTURES 3'-0" DEEP OR DEEPER, UNLESS SPECIFIED OTHERWISE.

DET-1



JUDE'S CROSSING PHASE V
JONESBORO, AR

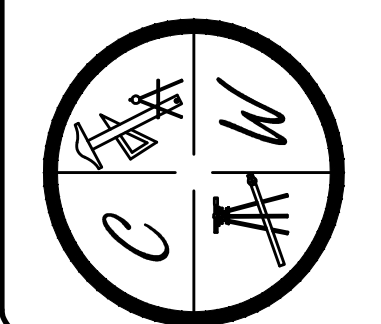
TYPICAL
STREET DETAILS

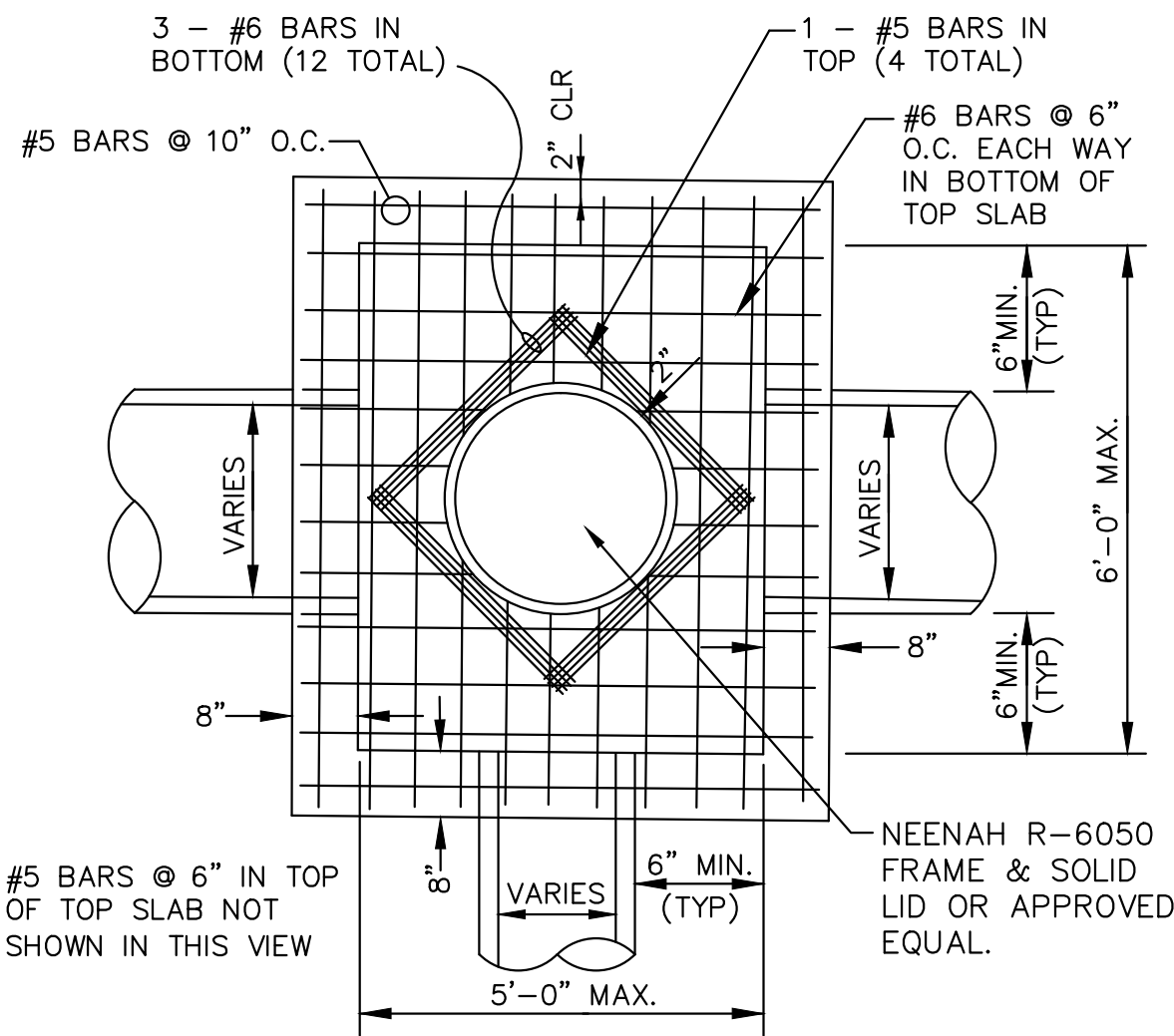
DATE: 6/29/16

REV:

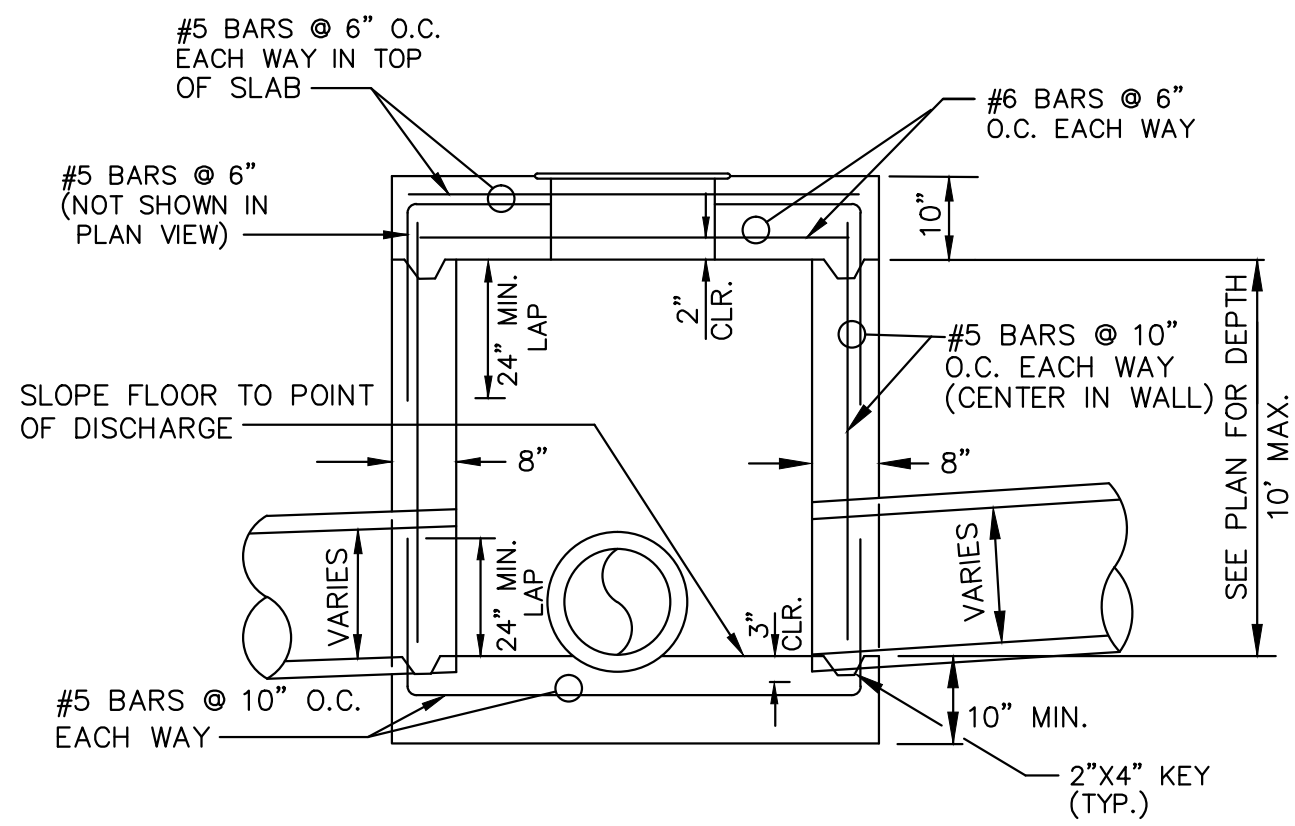
DRAWN BY: BGW

CARLOS WOOD, P.E.
ENGINEERING CONSULTANT
148 CR 375
BONO, AR 72416
PHONE/FAX: (870) 972-8335
EMAIL: WOODENR@SBCGLOBAL.NET
WEBSITE: WWW.WOODENR.COM





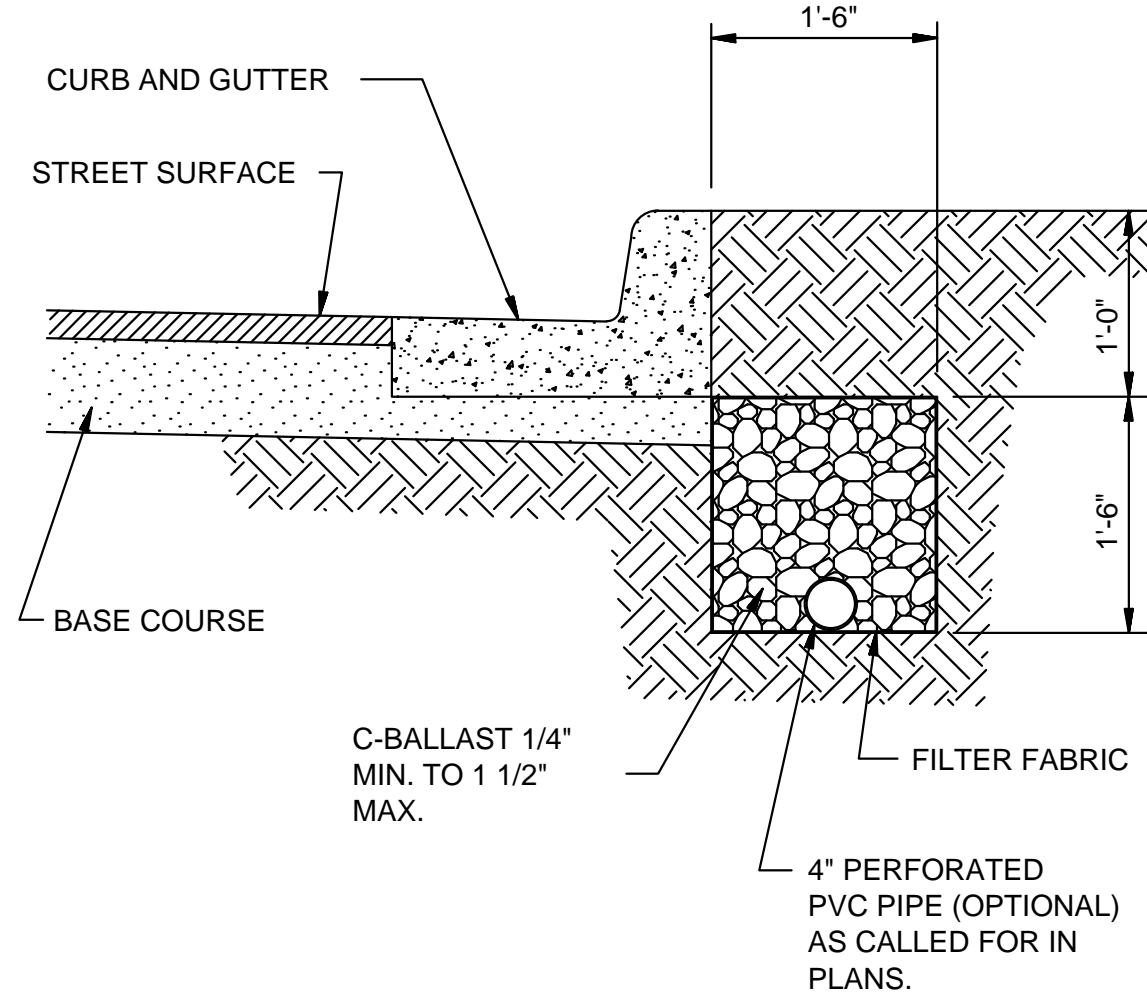
PLAN - JUNCTION BOX - HEAVY
SCALE: NONE



SECTION - JUNCTION BOX - HEAVY
N.T.S.

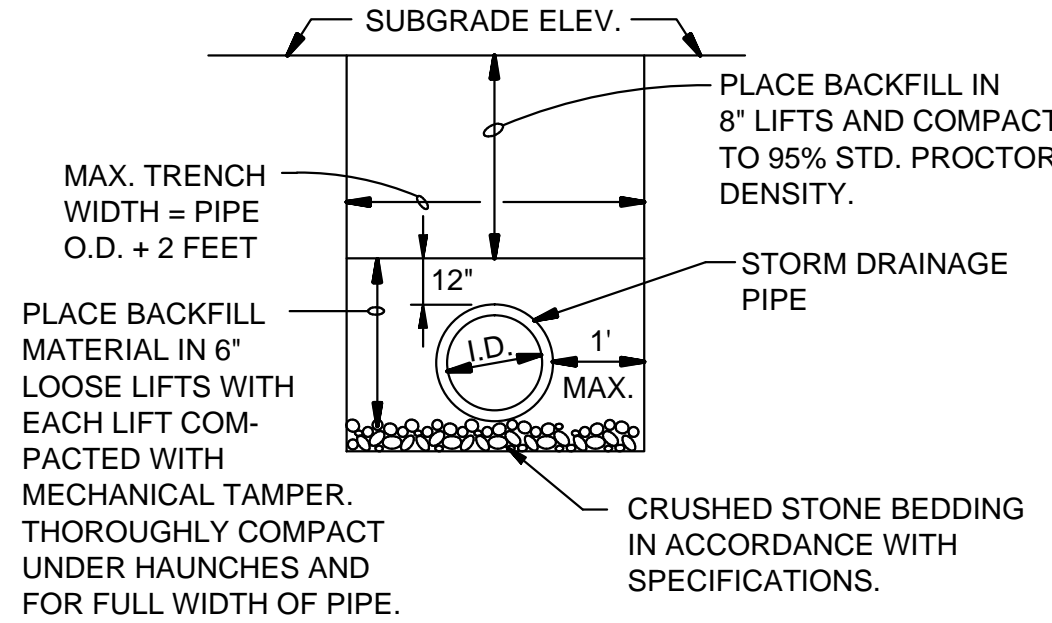
NOTES:

1. SHOULD BE USED TO ACCOMMODATE VEHICULAR TRAFFIC.
2. JUNCTION BOXES MORE THAN 3 FEET DEEP SHALL HAVE STANDARD MANHOLE STEPS PLACED @ 15" O.C.
3. SEE REINFORCING DETAIL FOR OPENING IN WALL OR SLAB.



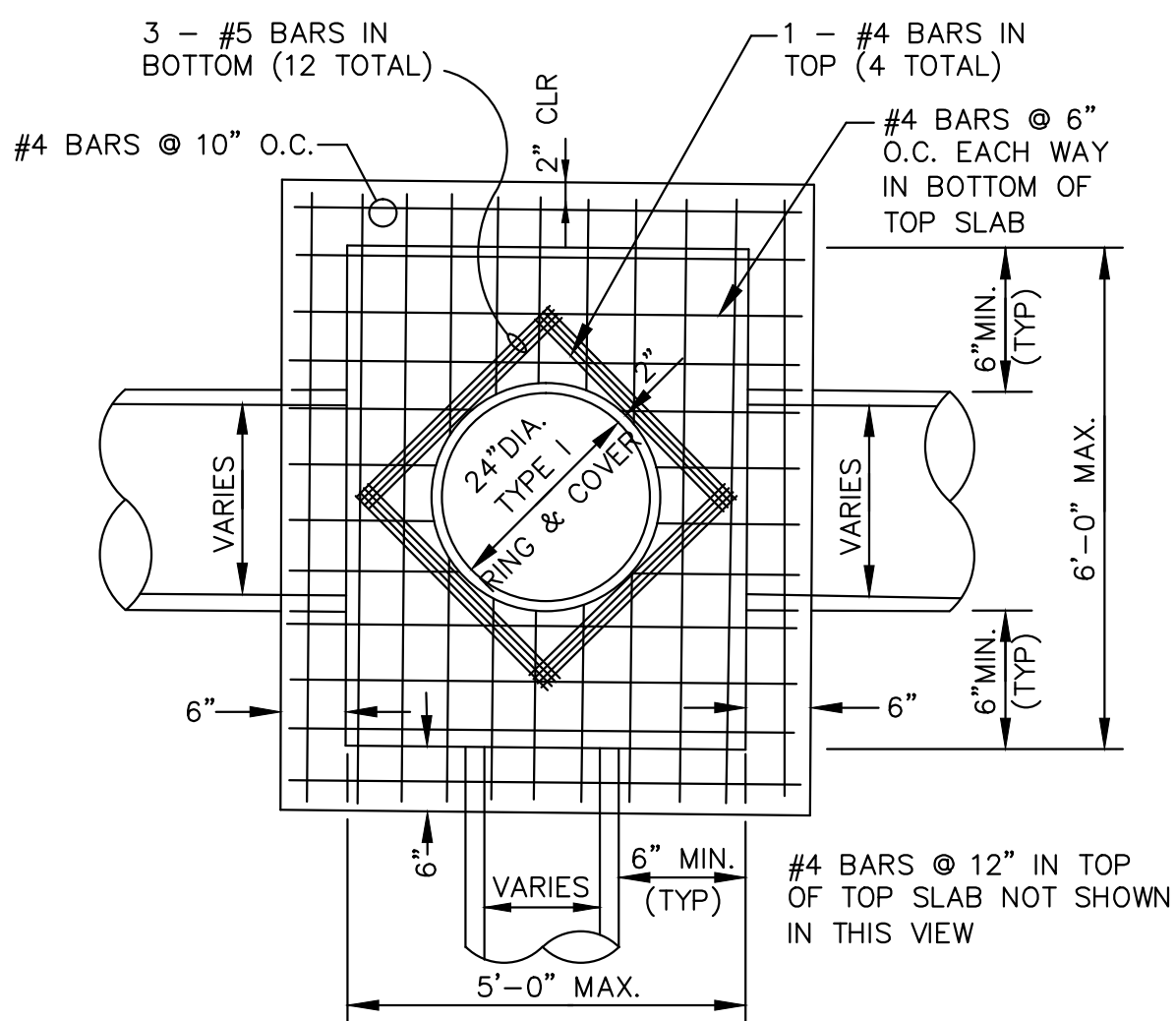
SUB-DRAIN DETAIL
N.T.S.

NOTE:
FINAL LOCATION OF SUB-DRAIN MAY BE DETERMINED BY THE ENGINEER DURING THE CONSTRUCTION PERIOD.



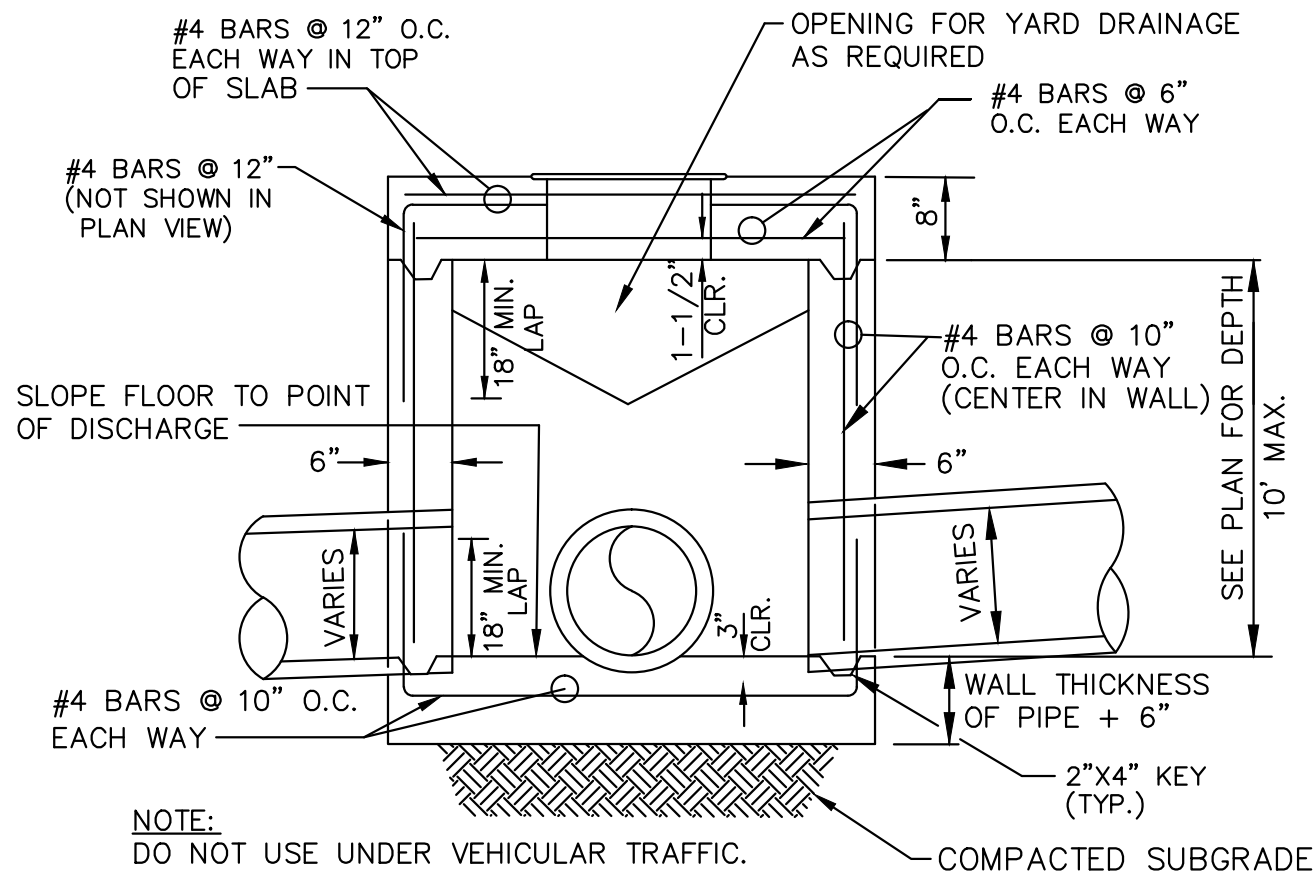
DRAINAGE PIPE TRENCH DETAIL
N.T.S.

NOTE: TO BE USED WITH NEW STREET CONSTRUCTION. SEE DRAWING NO. PT-1 FOR EXISTING STREET CUTS.



PLAN - JUNCTION BOX - LIGHT
SCALE: NONE

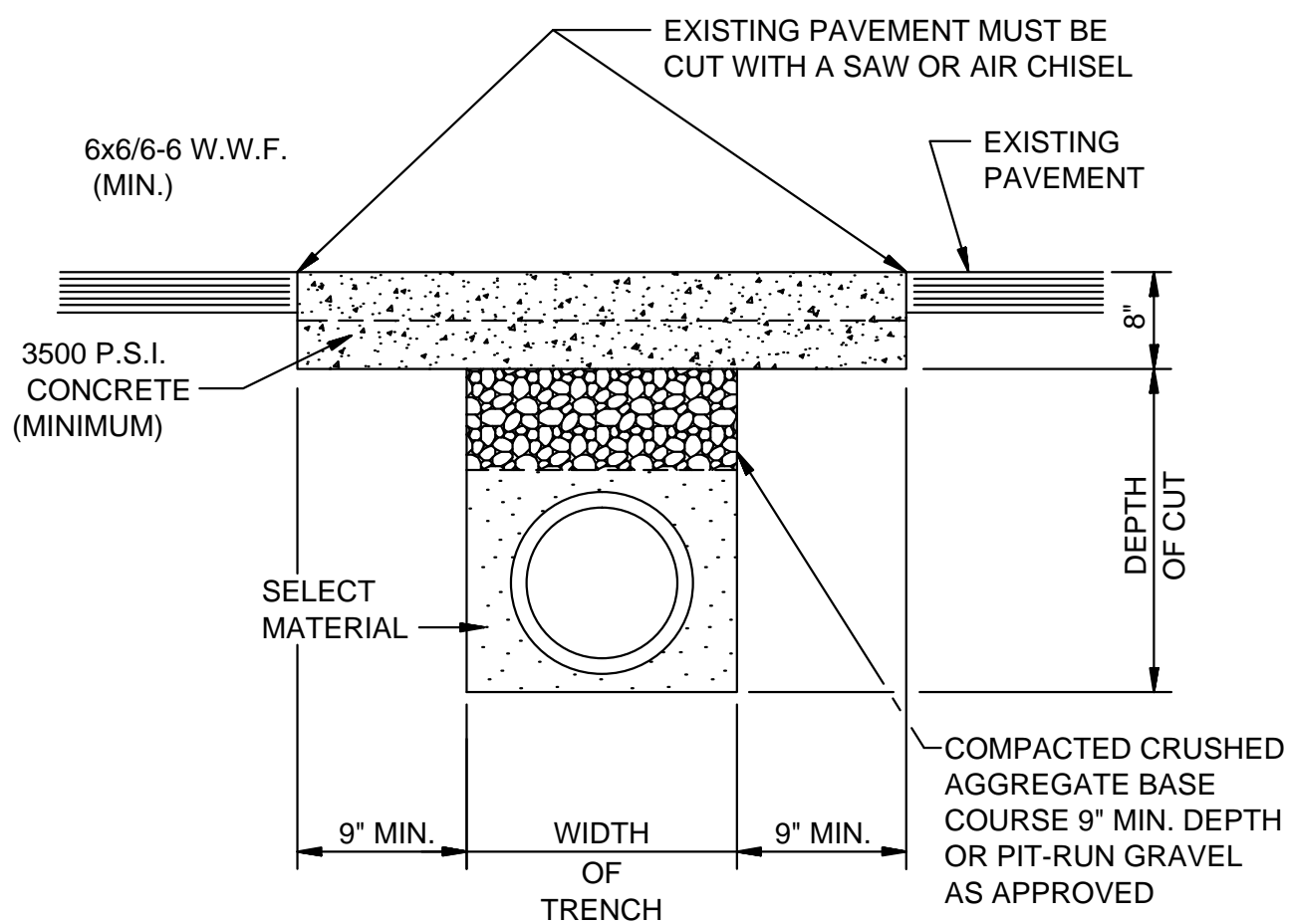
NOTE:
DO NOT USE UNDER VEHICULAR TRAFFIC.



SECTION - JUNCTION BOX - LIGHT
N.T.S.

NOTES:

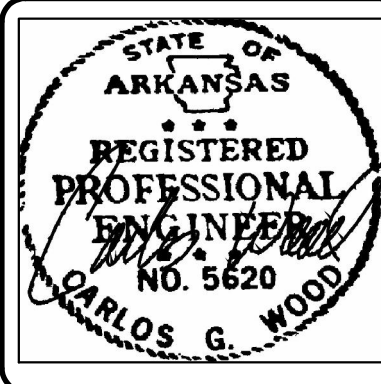
1. AS APPROVED BY THE ENGINEER, WALLS MAY BE 8" BLOCK WITH 1/2" MORTAR. FILL CELLS WITH CONCRETE AND WITH #4'S @ 16" O.C.. BLOCK WALLS SHALL NOT BE USED UNDER VEHICULAR LOADING. MINIMUM DISTANCE FROM WALL TO PIPE SHALL BE 8" IF BLOCK WALLS ARE USED.
2. JUNCTION BOXES MORE THAN 3 FEET DEEP SHALL HAVE STANDARD MANHOLE STEPS PLACED @ 15" O.C.
3. SEE REINFORCING DETAIL FOR OPENING IN WALL OR SLAB.



PAVEMENT TRENCH REPAIR DETAIL
N.T.S.

NOTE:
THE CONTRACTOR SHALL CALL PUBLIC WORKS DEPARTMENT FOR INSPECTION PRIOR TO PLACING CRUSHED AGGREGATE BASE COURSE AND PRIOR TO PLACING CONCRETE.

DET-2



JUDE'S CROSSING PHASE V

JONESBORO, AR

TYPICAL
STREET DETAILS

DATE: 6/29/16

REV:

DRAWN BY: BGW

CARLOS WOOD, P.E.
ENGINEERING CONSULTANT
148 CR 375
BONO, AR 72416
PHONE/FAX: (870) 972-8335
EMAIL: WOODENGR@SBCGLOBAL.NET
WEBSITE: WWW.WOODENGR.COM

