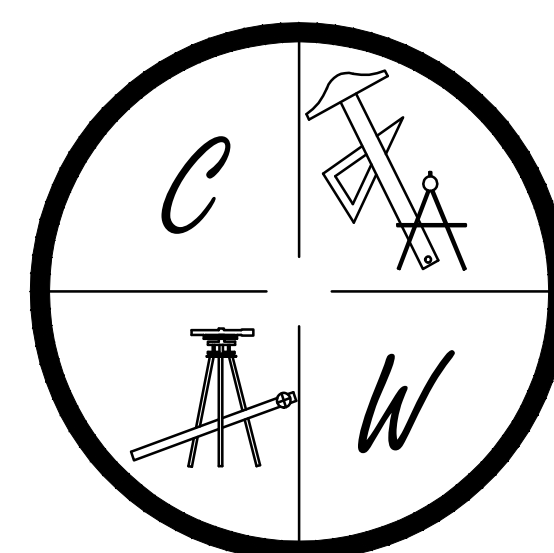


BRIDGER PARK

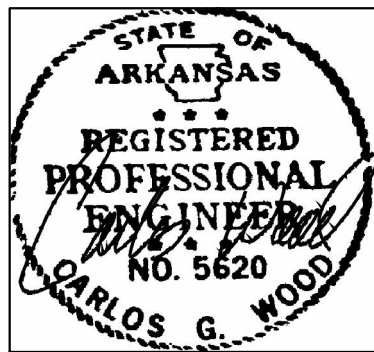
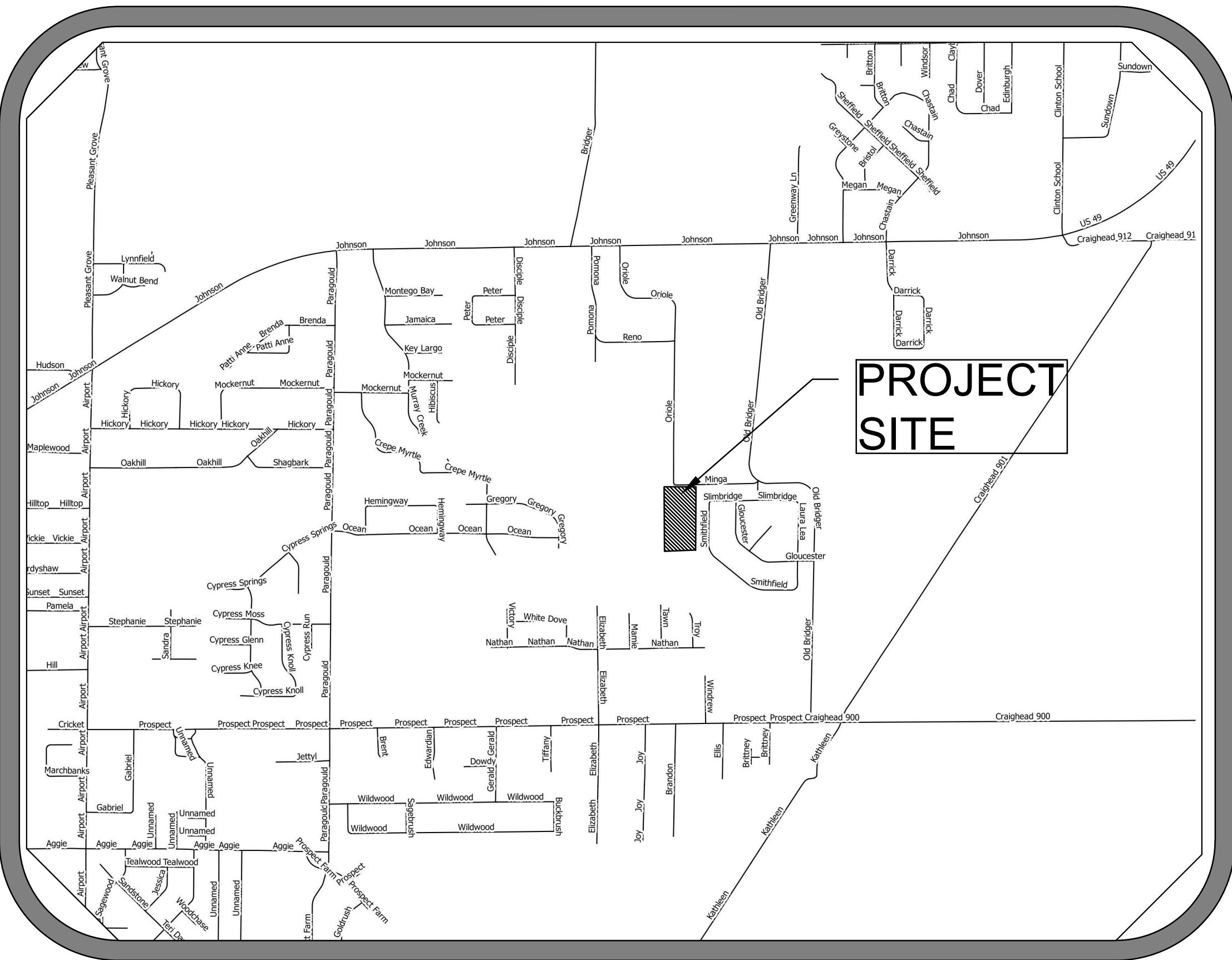
PHASE I

JONESBORO, ARKANSAS
STREET & DRAINAGE PLANS
NOVEMBER 2016



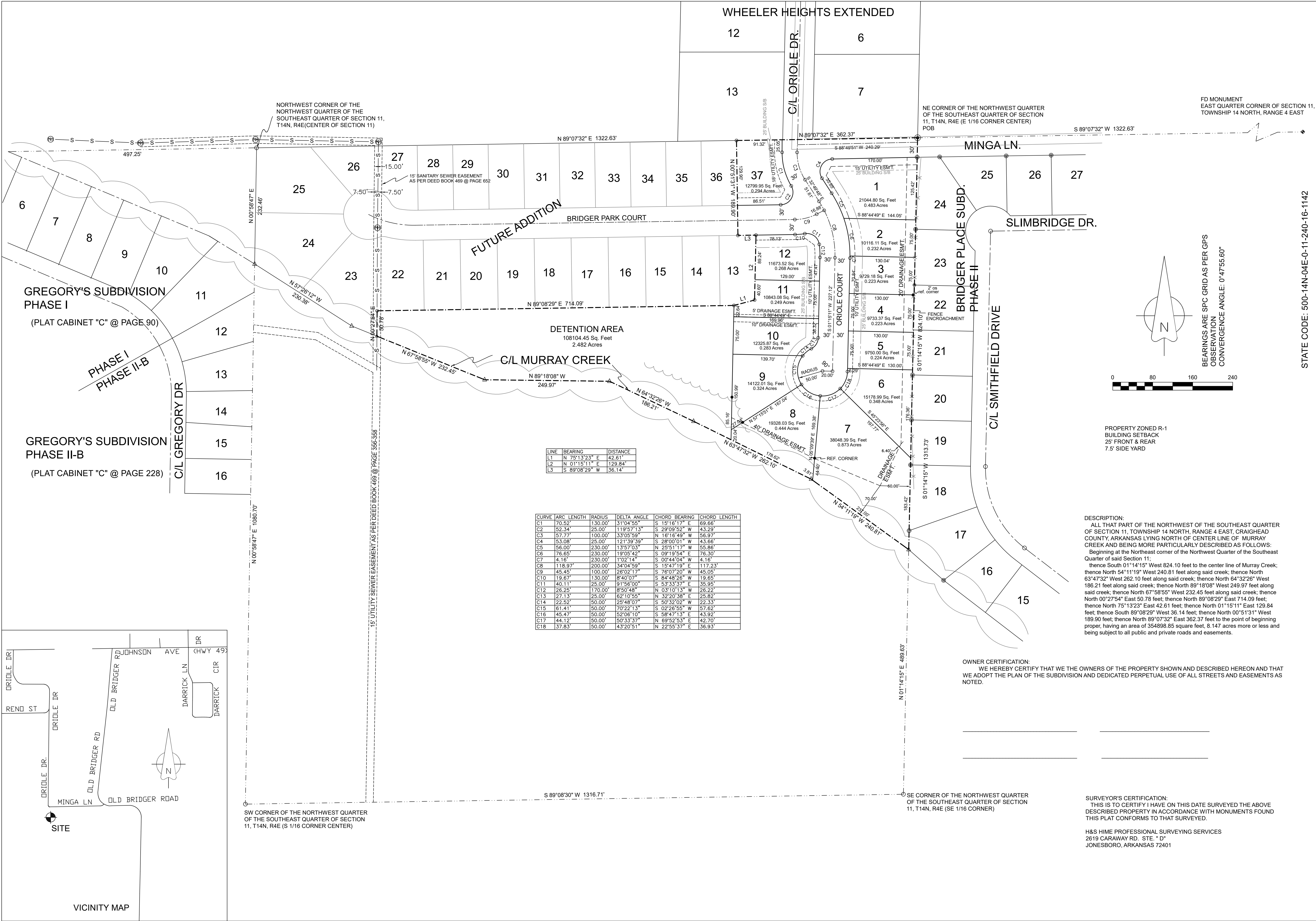
CARLOS WOOD, P.E.
ENGINEERING CONSULTANT
148 CR 375
BONO, AR 72416
PHONE/FAX: (870) 972-8335
EMAIL: WOODENGR@SBCGLOBAL.NET
WEBSITE: WWW.WOODENGR.COM

PROJECT VICINITY MAP
SCALE: 1" = 1000'



ARKANSAS ONE-CALL SYSTEM, INC.
1-800-482-8998 OR 811

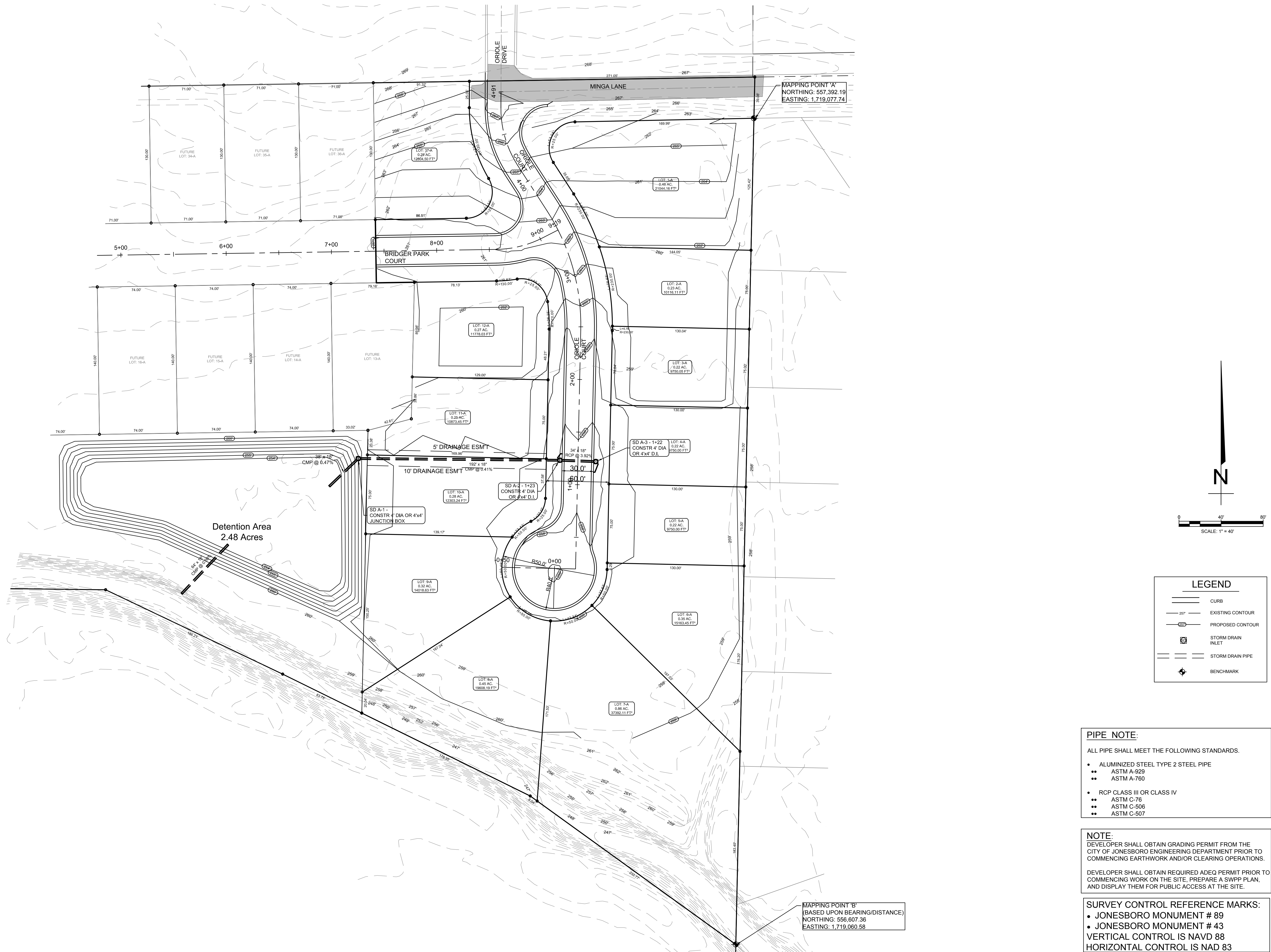
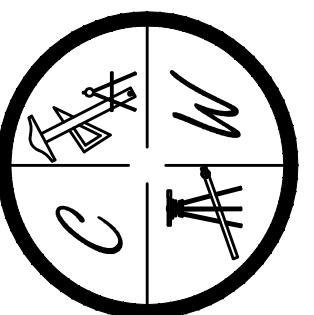
SHEET LAYOUT	
PLAT	
TOPOGRAPHY & DRAINAGE	STR-1
ORIOLE COURT & BRIDGER PARK COURT PLAN & PROFILE	STR-2
SUBDIVISION OVERALL	OVR
UTILITY PLAN	UTIL-1
EROSION CONTROL MAP	ECM-1
TYPICAL STREET DETAILS	DET-1 DET-2



JONESBORO, AR

REV:

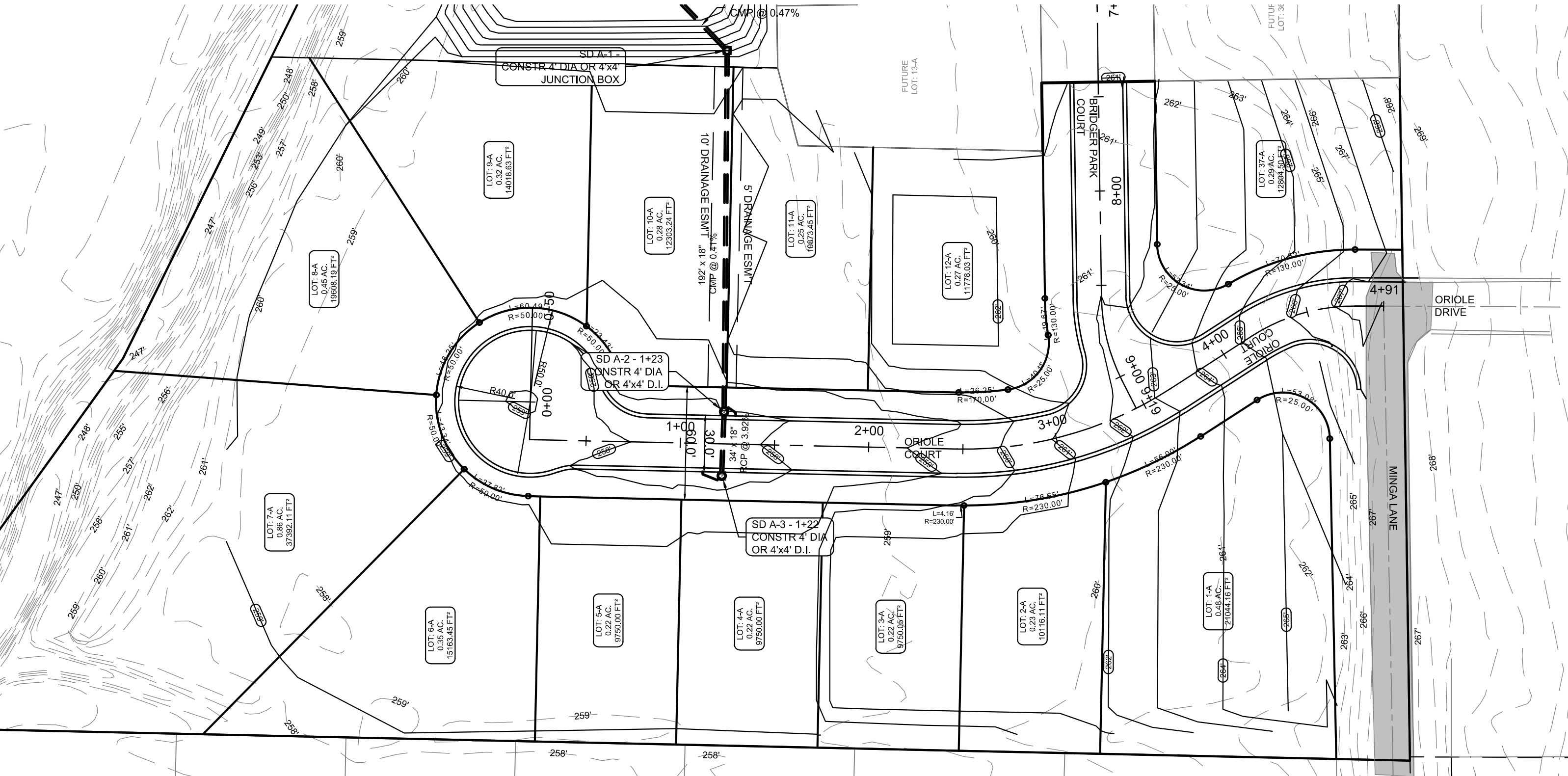
CARLOS WOOD, P.E.
ENGINEERING CONSULTANT
148 CR 375
BONO, AR 72416
PHONE/FAX: (870) 972-8335
EMAIL: WOODENR@SBCGLOBAL.NET
WEBSITE: WWW.WOODENR.COM



SURVEY CONTROL REFERENCE MARKS:

- JONESBORO MONUMENT # 89
- JONESBORO MONUMENT # 43

VERTICAL CONTROL IS NAVD 88
HORIZONTAL CONTROL IS NAD 83

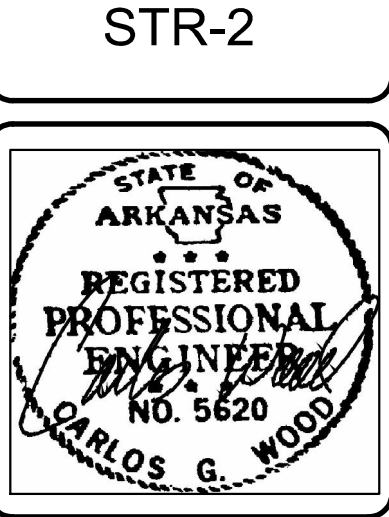


PIPE NOTE:

ALL PIPE SHALL MEET THE FOLLOWING STANDARDS.

- ALUMINIZED STEEL TYPE 2 STEEL PIPE
- ASTM A-929
- ASTM A-760
- RCP CLASS III OR CLASS IV
- ASTM C-76
- ASTM C-506
- ASTM C-507

LEGEND	
	CURB
	EXISTING CONTOUR
	PROPOSED CONTOUR
	STORM DRAIN INLET
	STORM DRAIN PIPE



BRIDGER PARK PHASE I

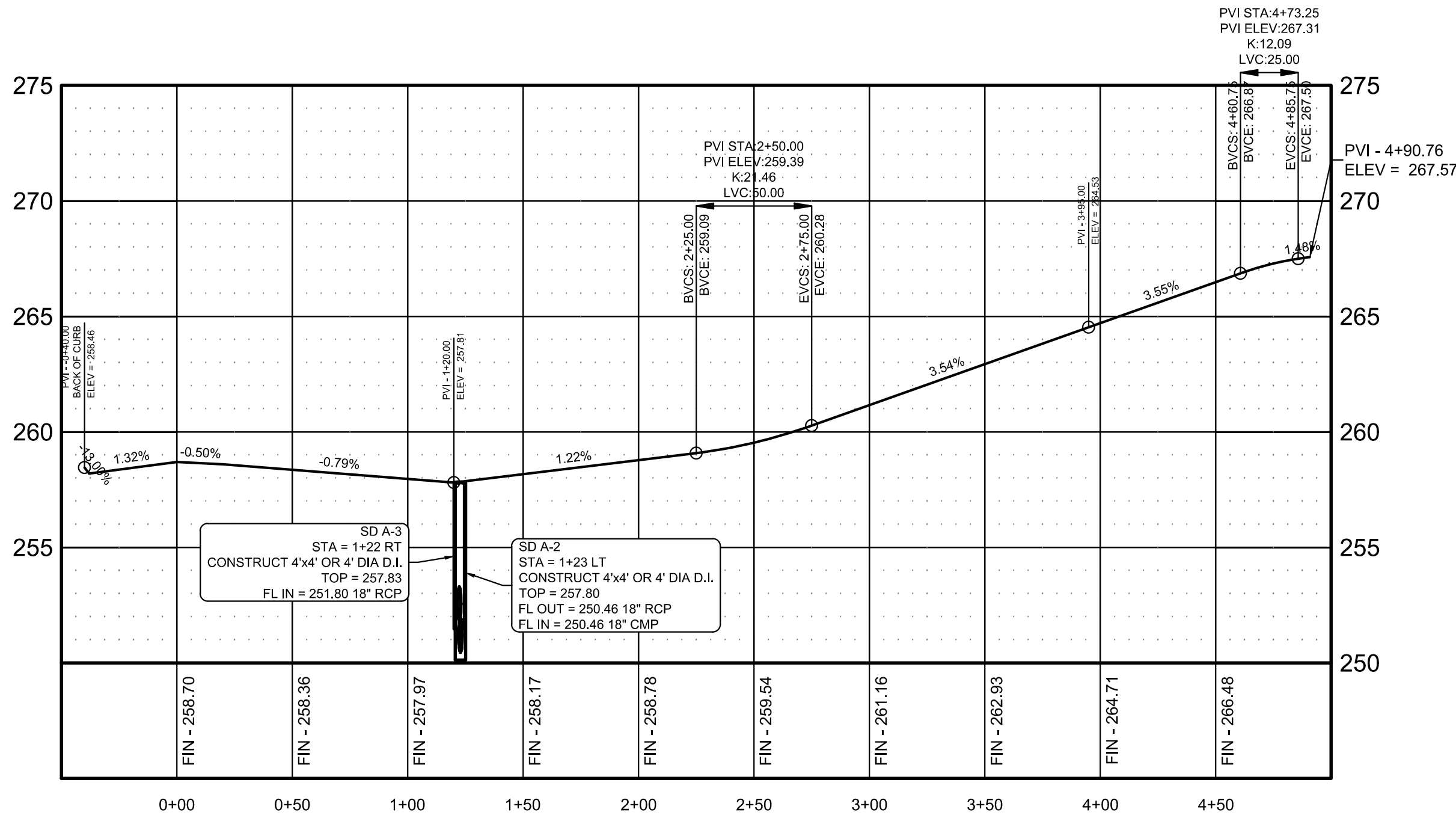
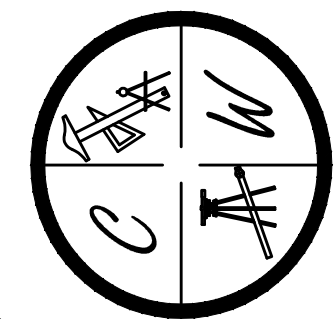
JONESBORO, AR

ORIOLE COURT & BRIDGER PARK COURT

PLAN & PROFILE

DATE: 4/18/16
REV:
DRAWN BY: BGW

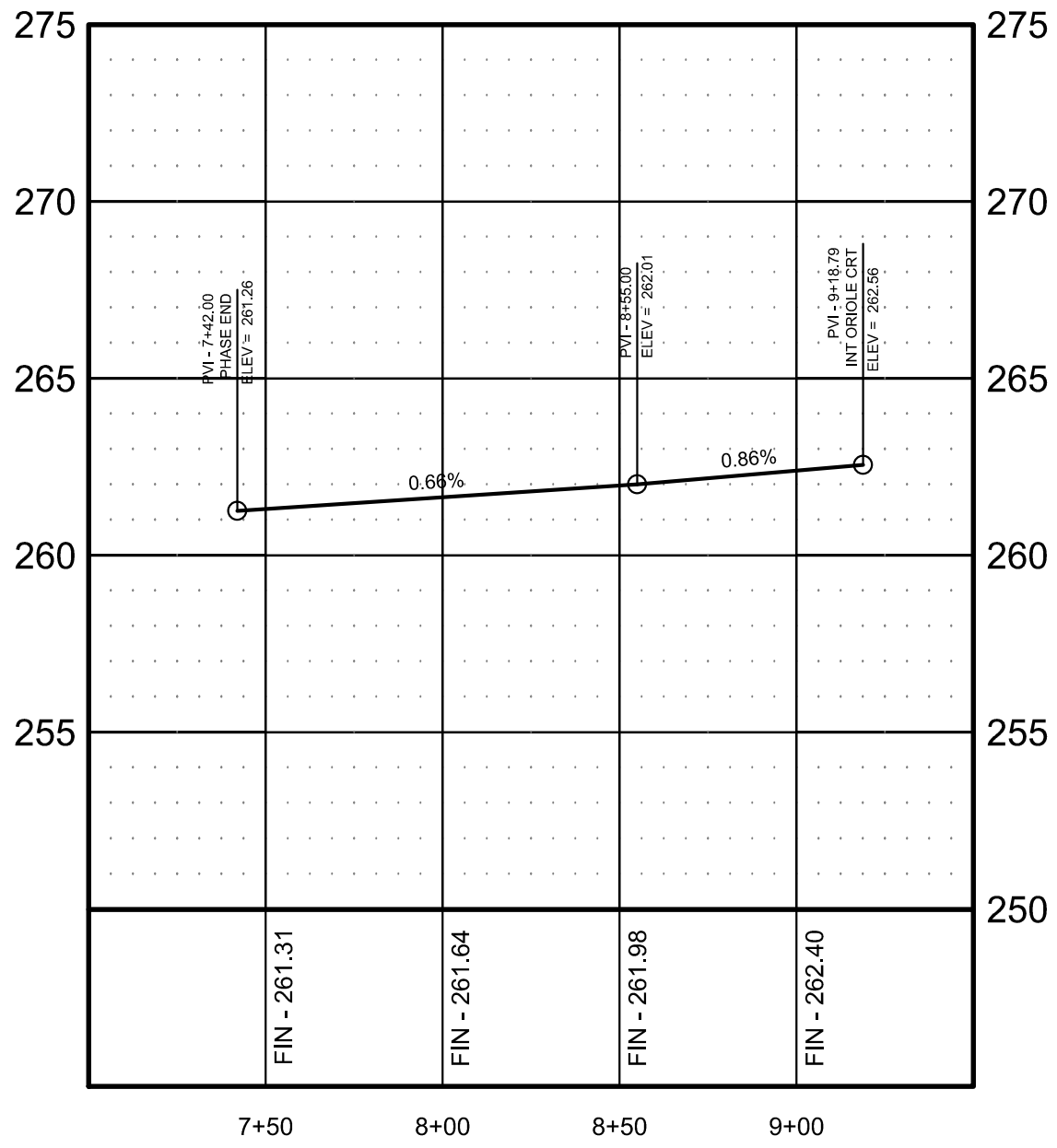
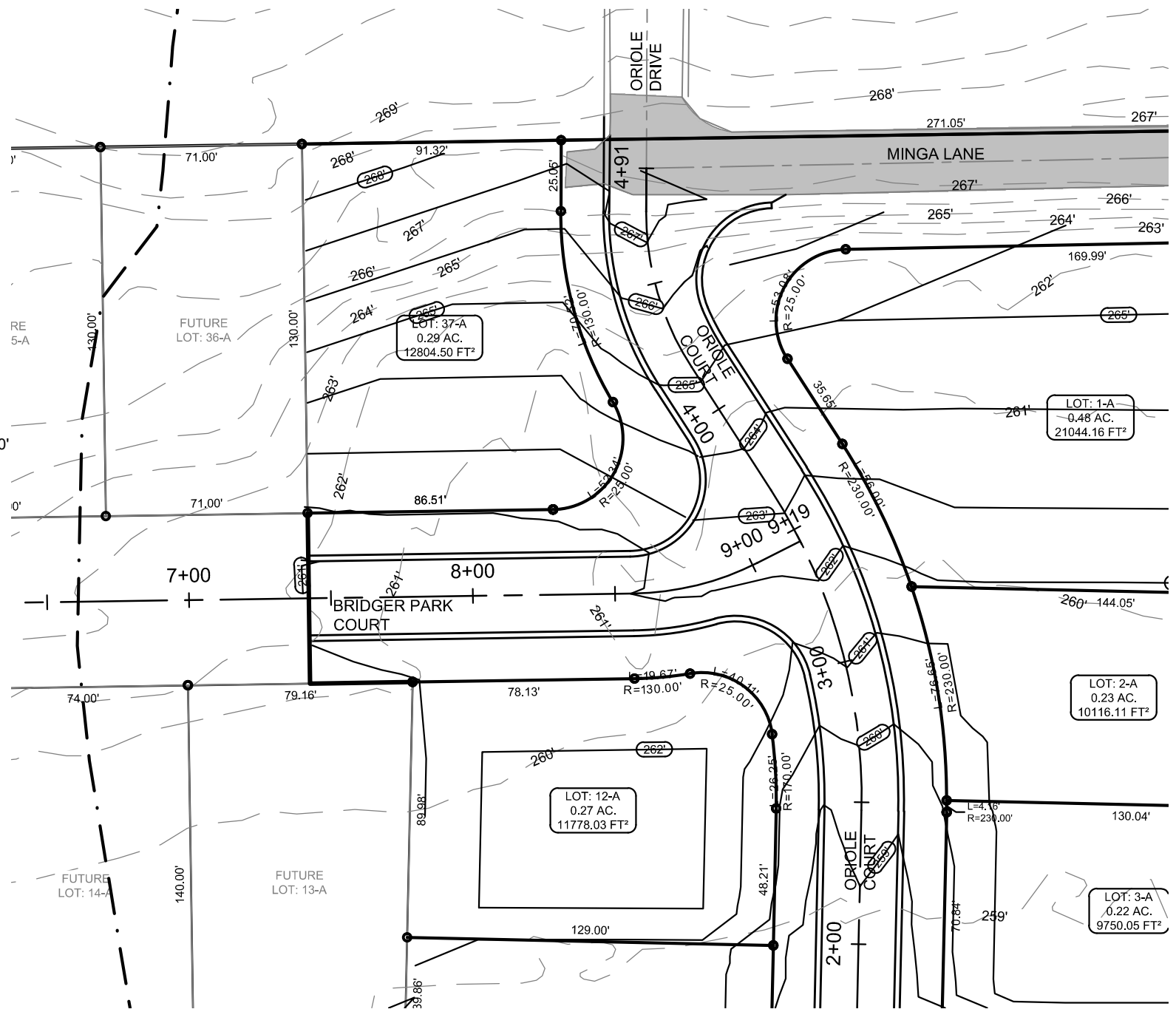
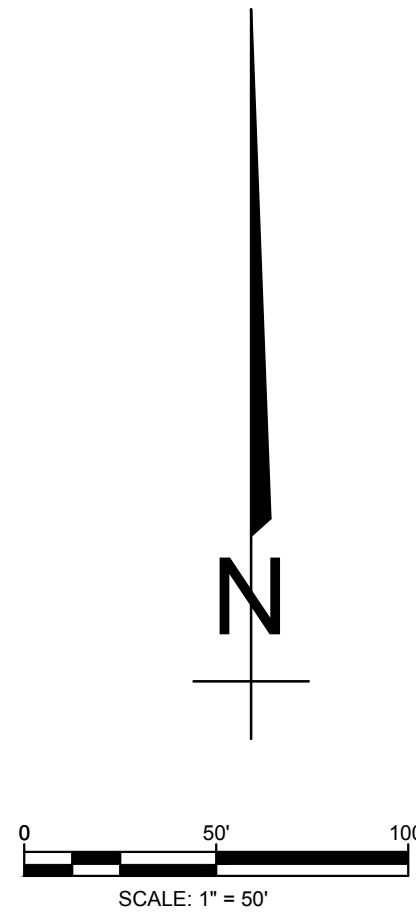
CARLOS WOOD, P.E.
ENGINEERING CONSULTANT
148 CR 375
BONO, AR 72416
PHONE/FAX: (870) 972-8335
EMAIL: WOODENR@SBCGLOBAL.NET
WEBSITE: WWW.WOODENR.COM



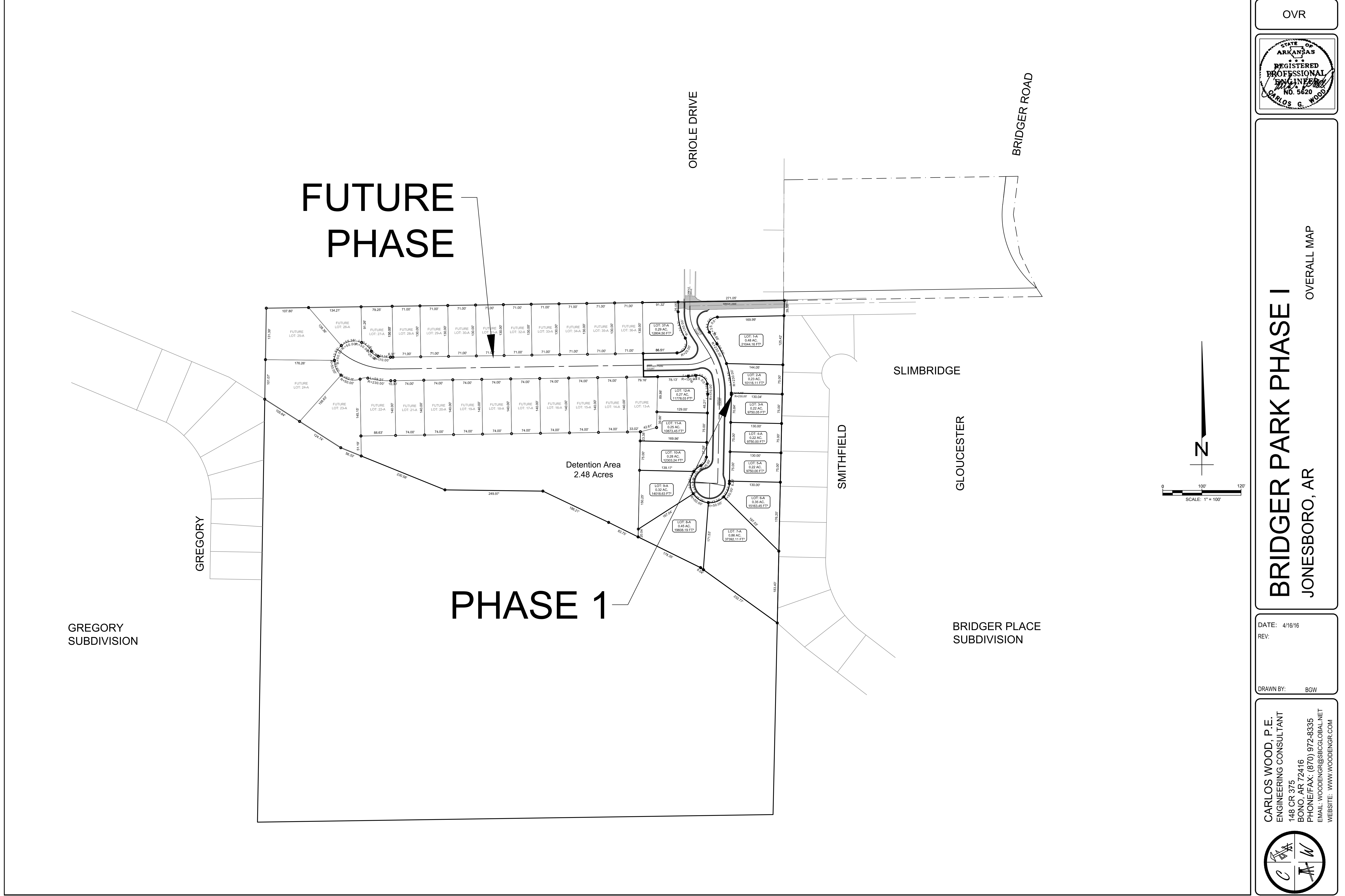
ORIOLE COURT

PROFILE SCALE:

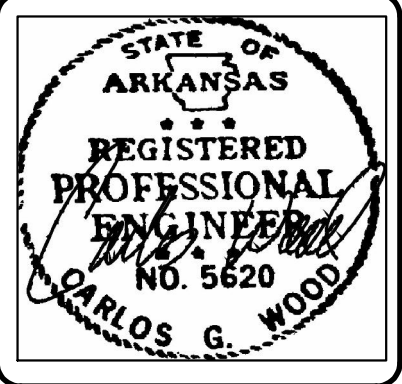
HORIZONTAL: 1" = 50'
VERTICAL: 1" = 5'



BRIDGER PARK COURT



OVR



BRIDGER PARK PHASE I

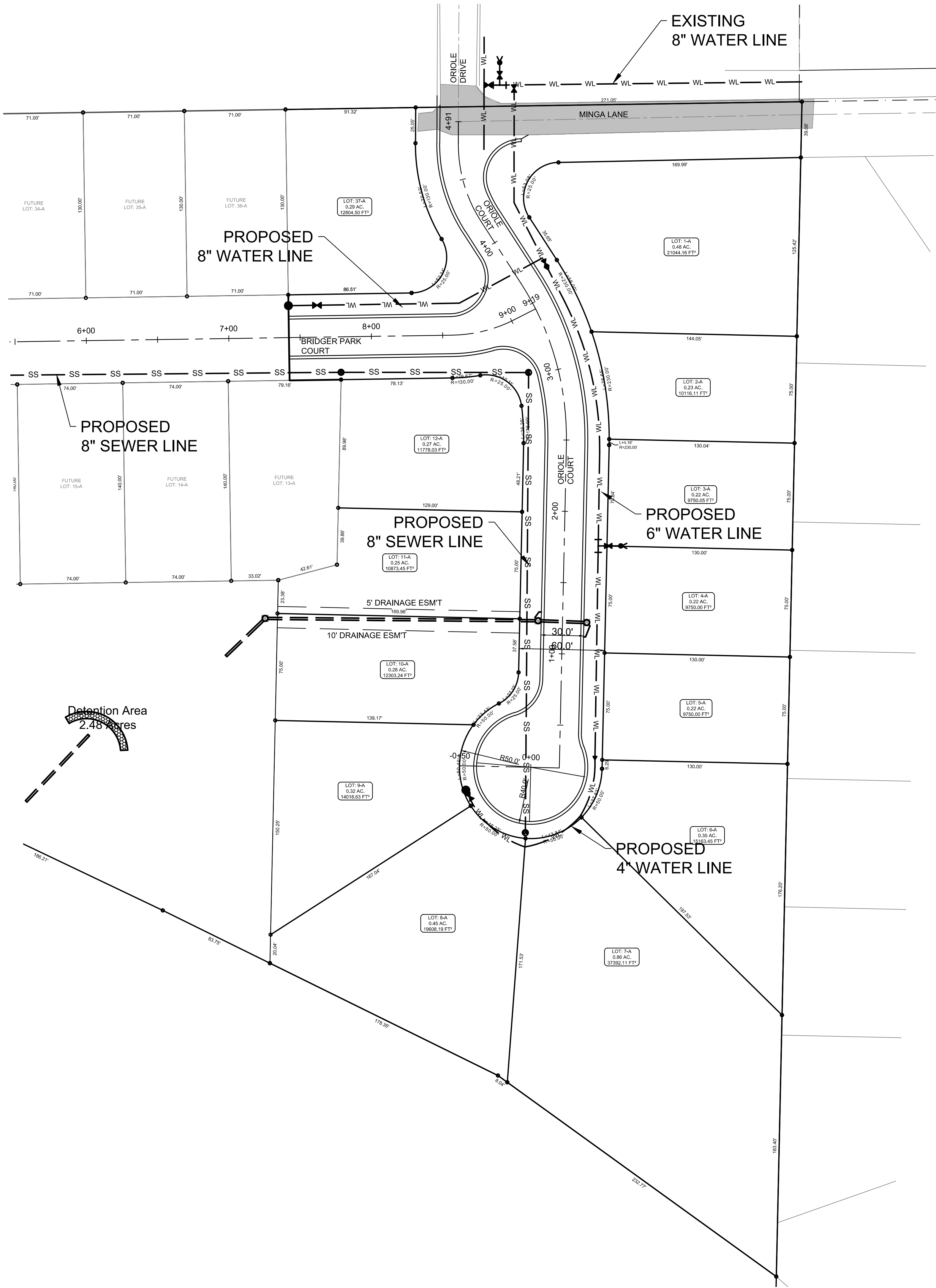
JONESBORO, AR

OVERALL MAP

DATE: 4/16/16
REV:
DRAWN BY: BGW



CARLOS WOOD, P.E.
ENGINEERING CONSULTANT
148 CR 375
BONO, AR 72416
PHONE/FAX: (870) 972-8335
EMAIL: WOODENR@SBGLOBAL.NET
WEBSITE: WWW.WOODENR.COM



UTIL-1

STATE OF ARKANSAS

REGISTERED PROFESSIONAL ENGINEER

NO. 5620

CARLOS G. WOOD

BRIDGER PARK PHASE I

JONESBORO, AR

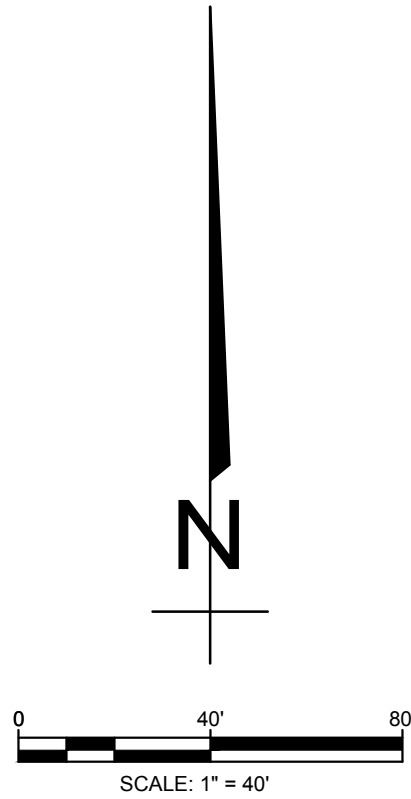
UTILITY LAYOUT

DATE: 4/26/16

REV:

DRAWN BY: BGW

CARLOS WOOD, P.E.
ENGINEERING CONSULTANT
148 CR 375
BONO, AR 72416
PHONE/FAX: (870) 972-8335
EMAIL: WOODENR@SBCGLOBAL.NET
WEBSITE: WWW.WOODENR.COM



LEGEND	
	CURB
	WATER LINE
	SEWER LINE
	SEWER MANHOLE
	STORM DRAIN INLET
	STORM DRAIN PIPE

PIPE NOTE:

ALL PIPE SHALL MEET THE FOLLOWING STANDARDS.

- ALUMINIZED STEEL TYPE 2 STEEL PIPE
 - ASTM A-929
 - ASTM A-760
- RCP CLASS III OR CLASS IV
 - ASTM C-76
 - ASTM C-506
 - ASTM C-507

NOTE:

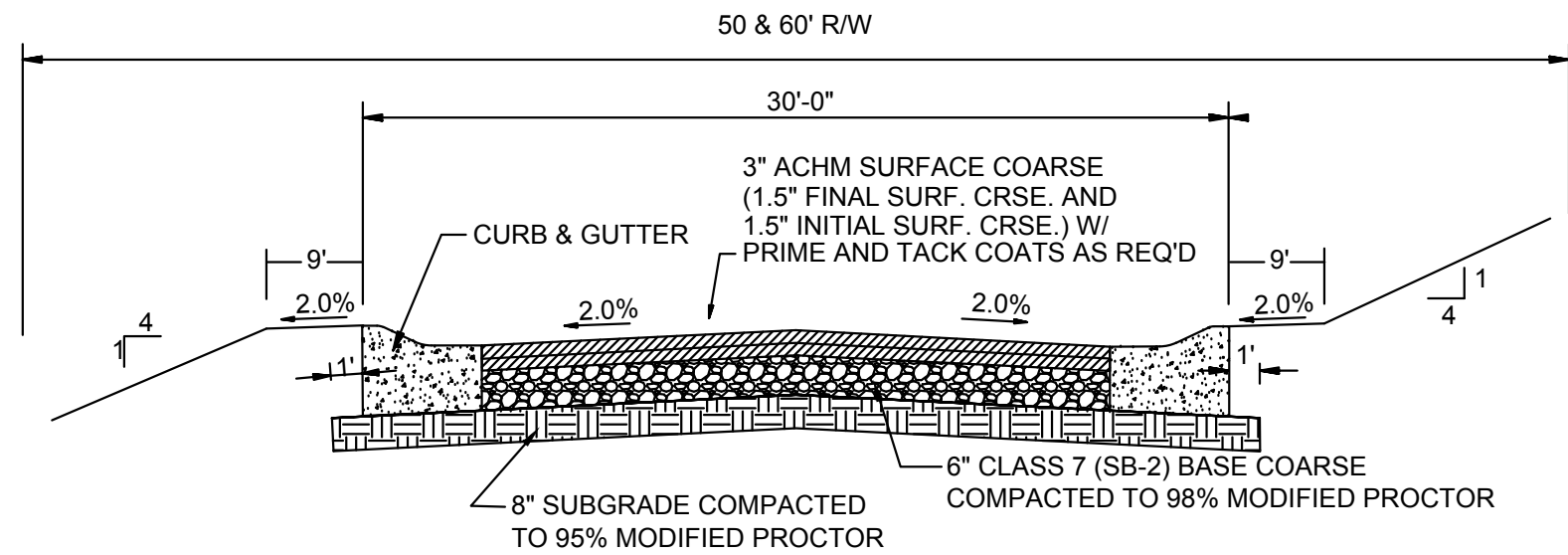
DEVELOPER SHALL OBTAIN GRADING PERMIT FROM THE CITY OF JONESBORO ENGINEERING DEPARTMENT PRIOR TO COMMENCING EARTHWORK AND/OR CLEARING OPERATIONS.

DEVELOPER SHALL OBTAIN REQUIRED ADEQ PERMIT PRIOR TO COMMENCING WORK ON THE SITE. PREPARE A SWPP PLAN, AND DISPLAY THEM FOR PUBLIC ACCESS AT THE SITE.

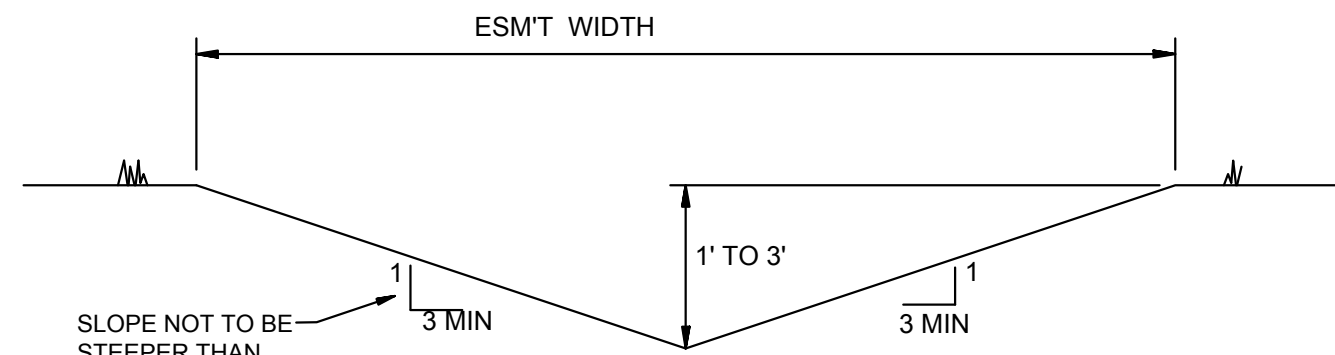
SURVEY CONTROL REFERENCE MARKS:

- JONESBORO MONUMENT # 89
- JONESBORO MONUMENT # 43

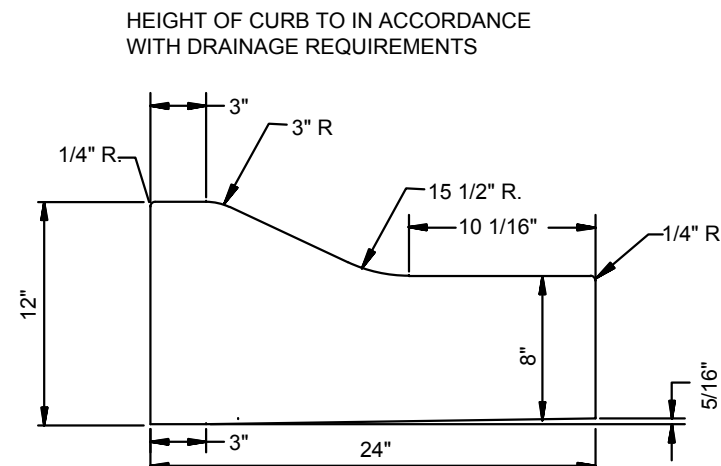
VERTICAL CONTROL IS NAVD 88
HORIZONTAL CONTROL IS NAD 83



TYPICAL SECTION - INTERIOR STREETS
N.T.S.



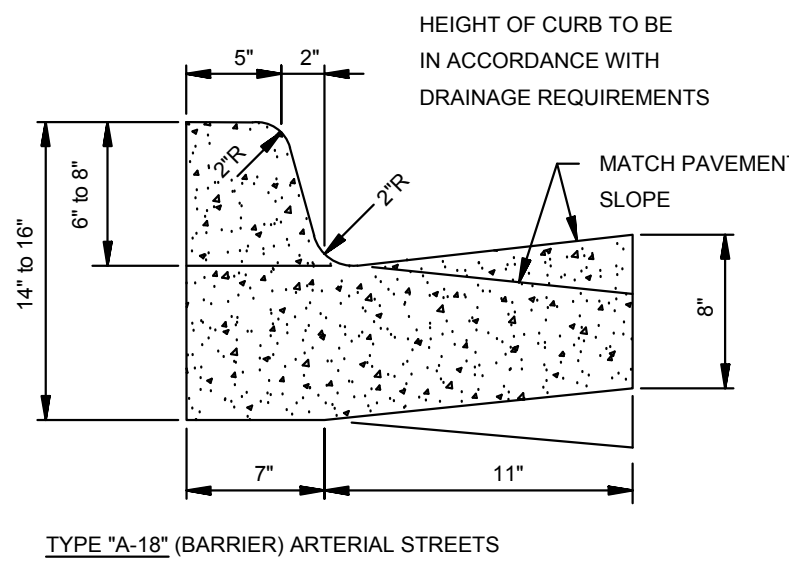
'A' TYPICAL DITCH DETAIL
N.T.S.



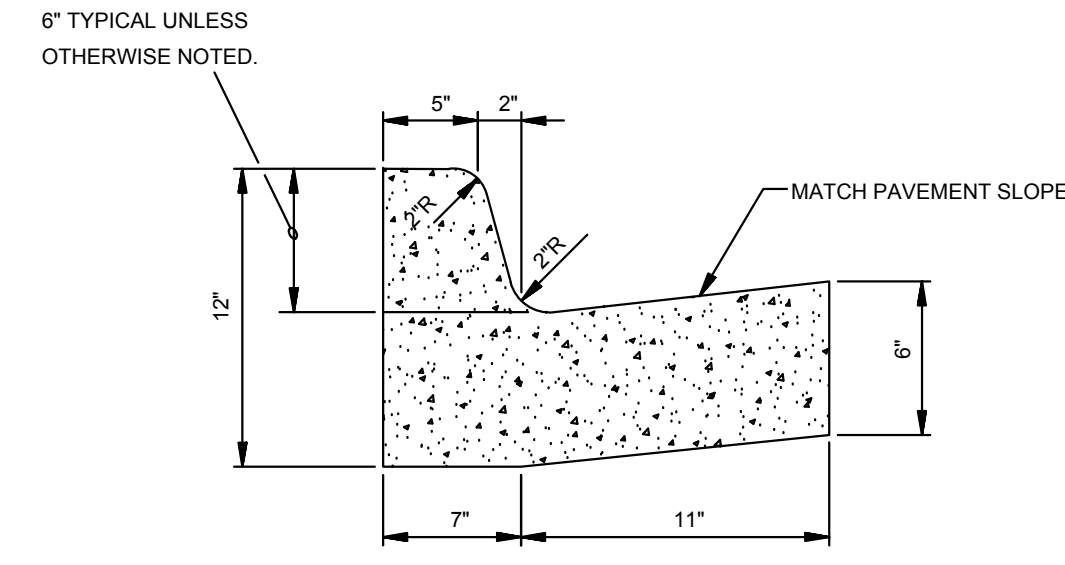
TYPE 'B' CURB & GUTTER
N.T.S.

NOTE: CONTRACTION AND EXPANSION JOINTS SHALL BE CONSTRUCTED IN ACCORDANCE WITH THE CITY OF JONESBORO SPECIFICATIONS

NO DRIVEWAY CUTS ALLOWED WITH THIS TYPE OF CURB



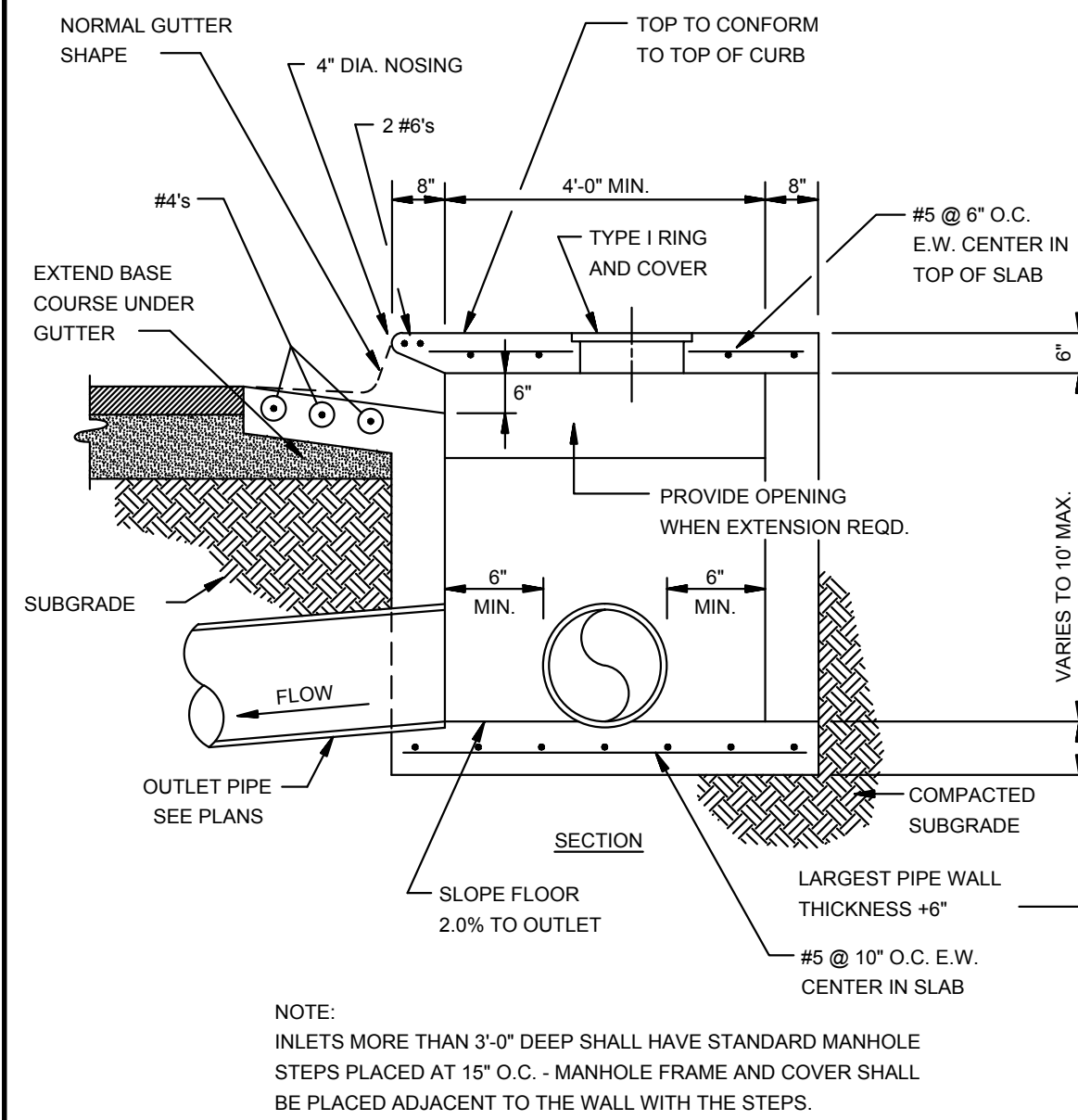
TYPE "A-18" (BARRIER) ARTERIAL STREETS



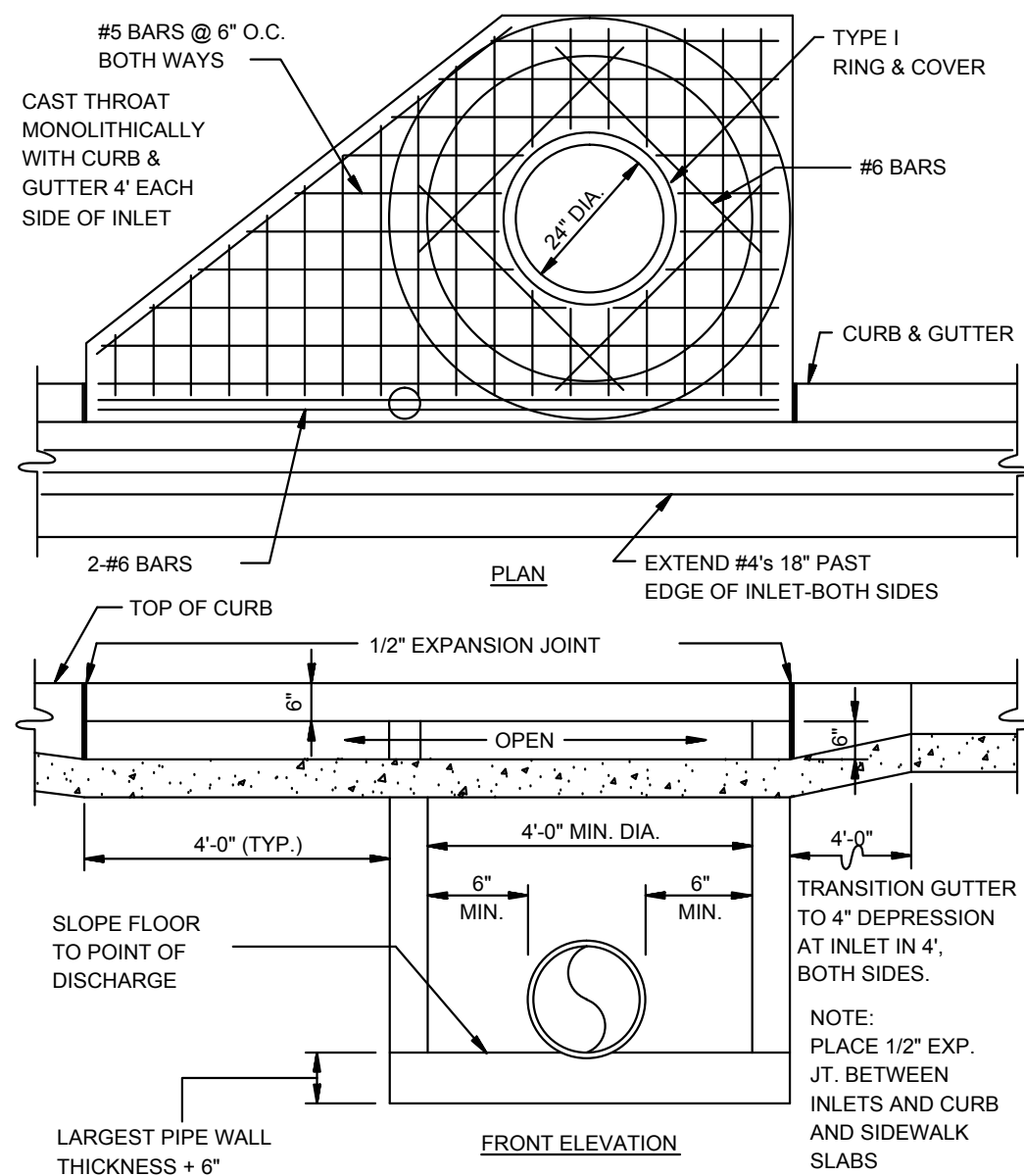
TYPE "A-18" (BARRIER) RESIDENTIAL & COLLECTOR STREETS

COMBINATION CURB & GUTTER
N.T.S.

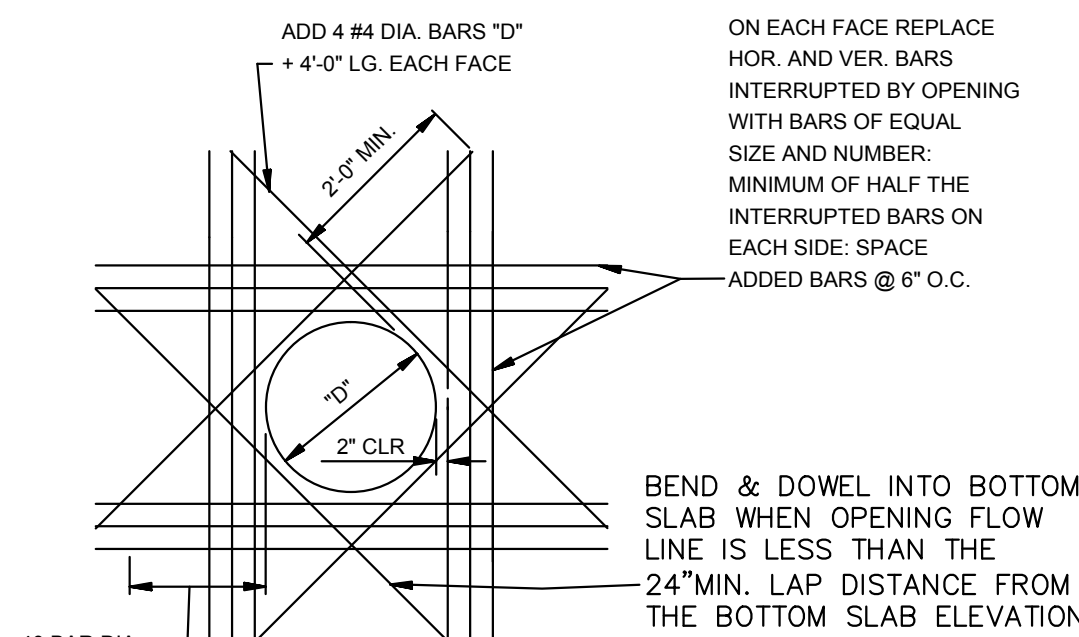
NOTE: CONTRACTION AND EXPANSION JOINTS SHALL BE CONSTRUCTED IN ACCORDANCE WITH THE PLANS AND SPECIFICATIONS.



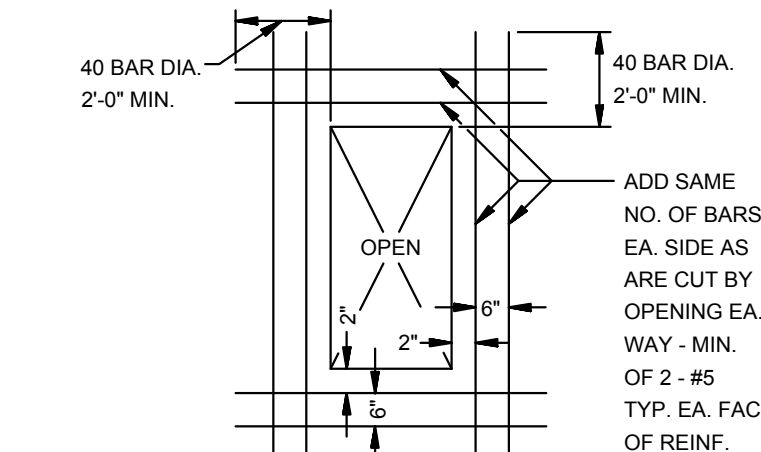
SECTION - CIRCULAR CURB INLET
N.T.S.



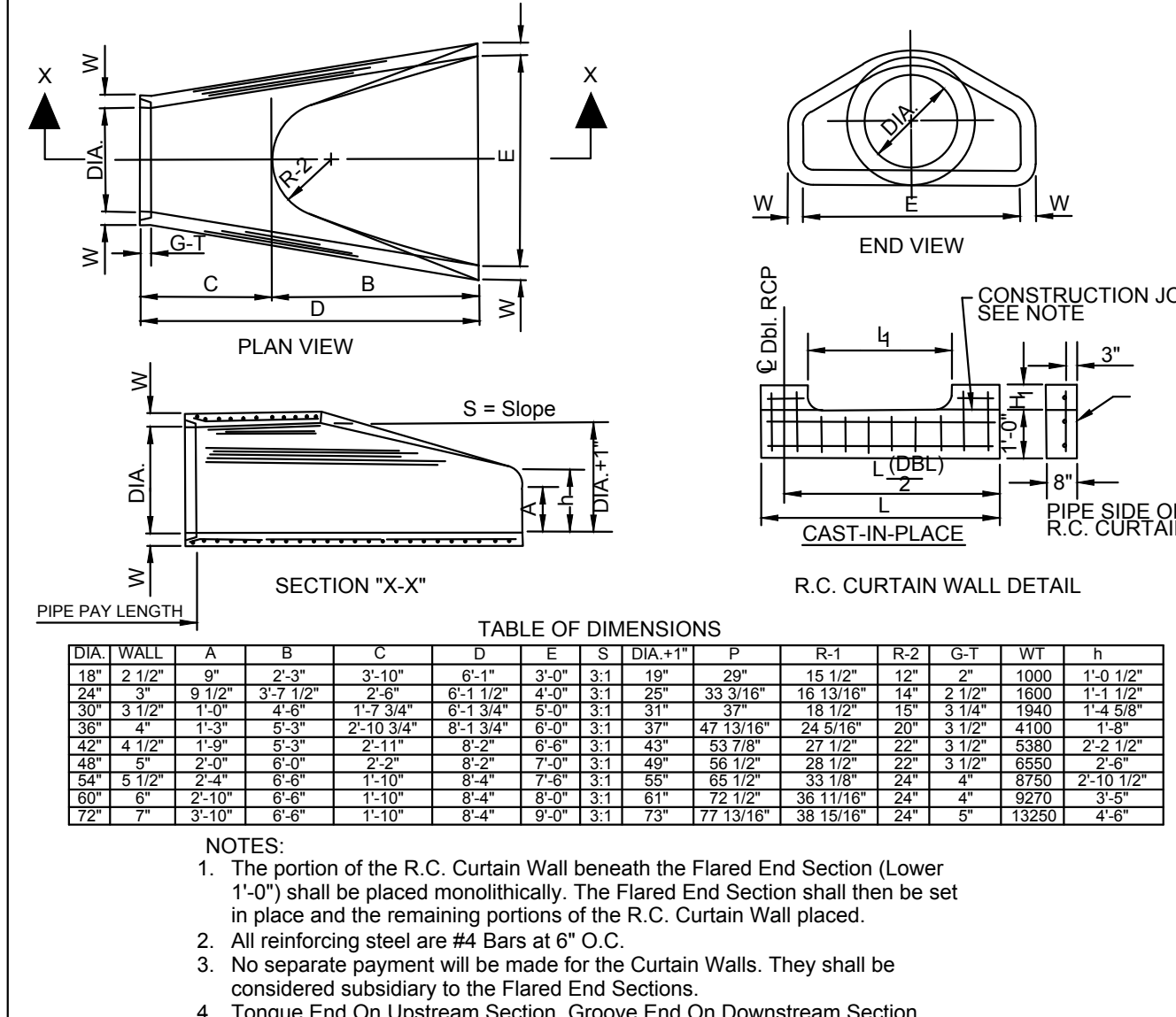
**CIRCULAR CURB INLET
W/ INLET EXTENSION**
N.T.S.



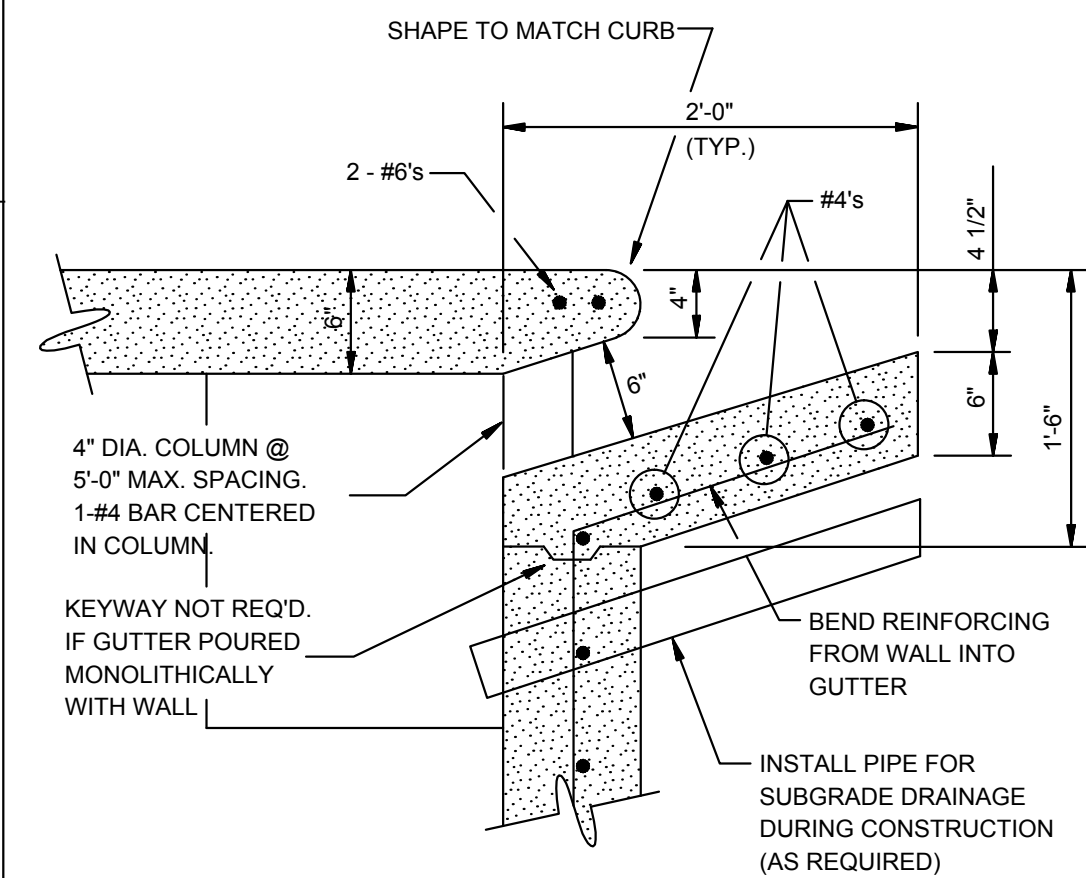
**ADDED REINFORCEMENT AT
ROUND OPENING IN WALL OR SLAB**
N.T.S.



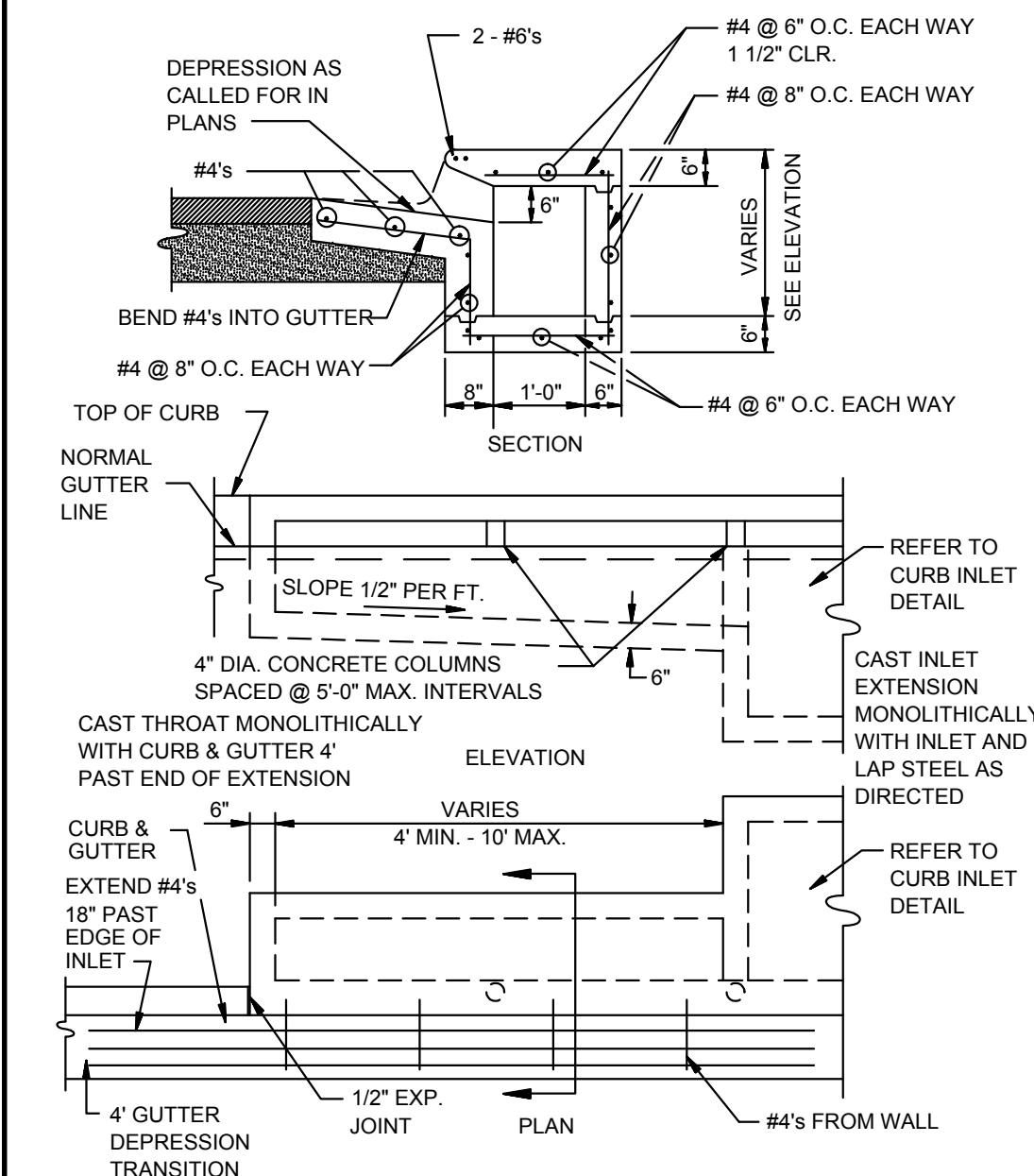
**ADDED REINFORCEMENT AT
RECTANGULAR OPENING
IN WALL OR SLAB**
N.T.S.



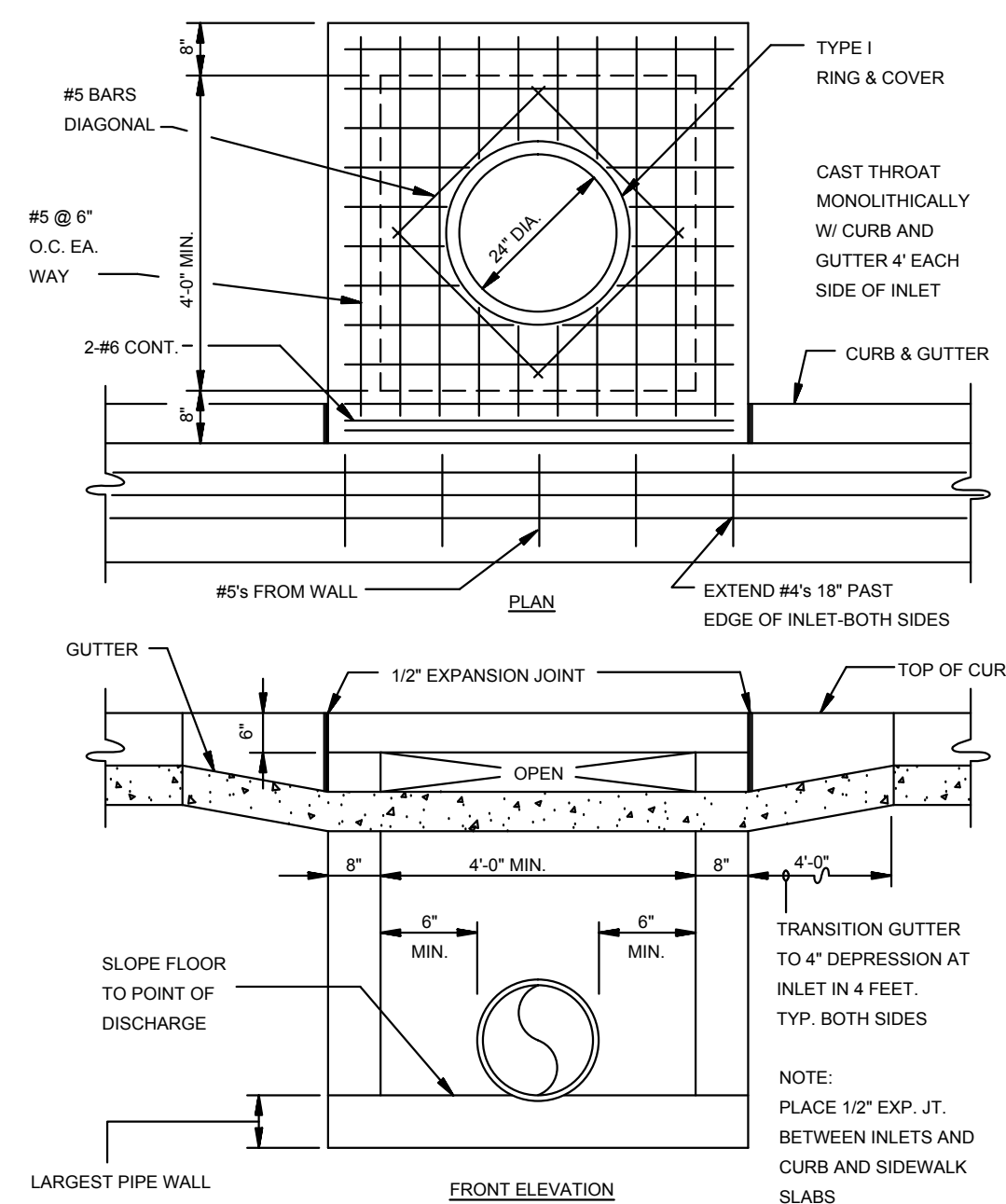
**FLARED END SECTION DETAIL FOR
REINFORCED CONCRETE PIPE CULVERT**
N.T.S.



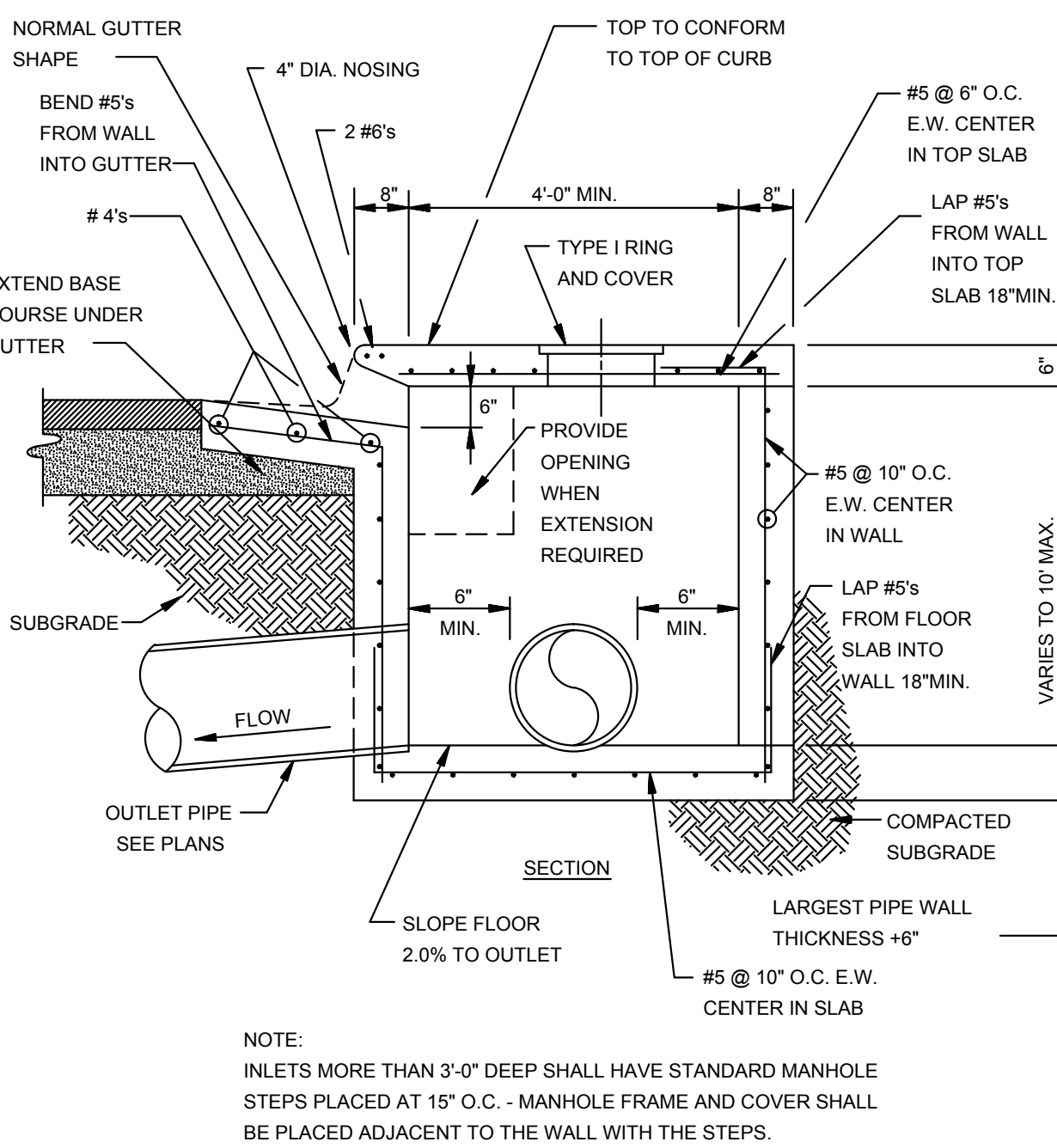
CURB OPENING
N.T.S.



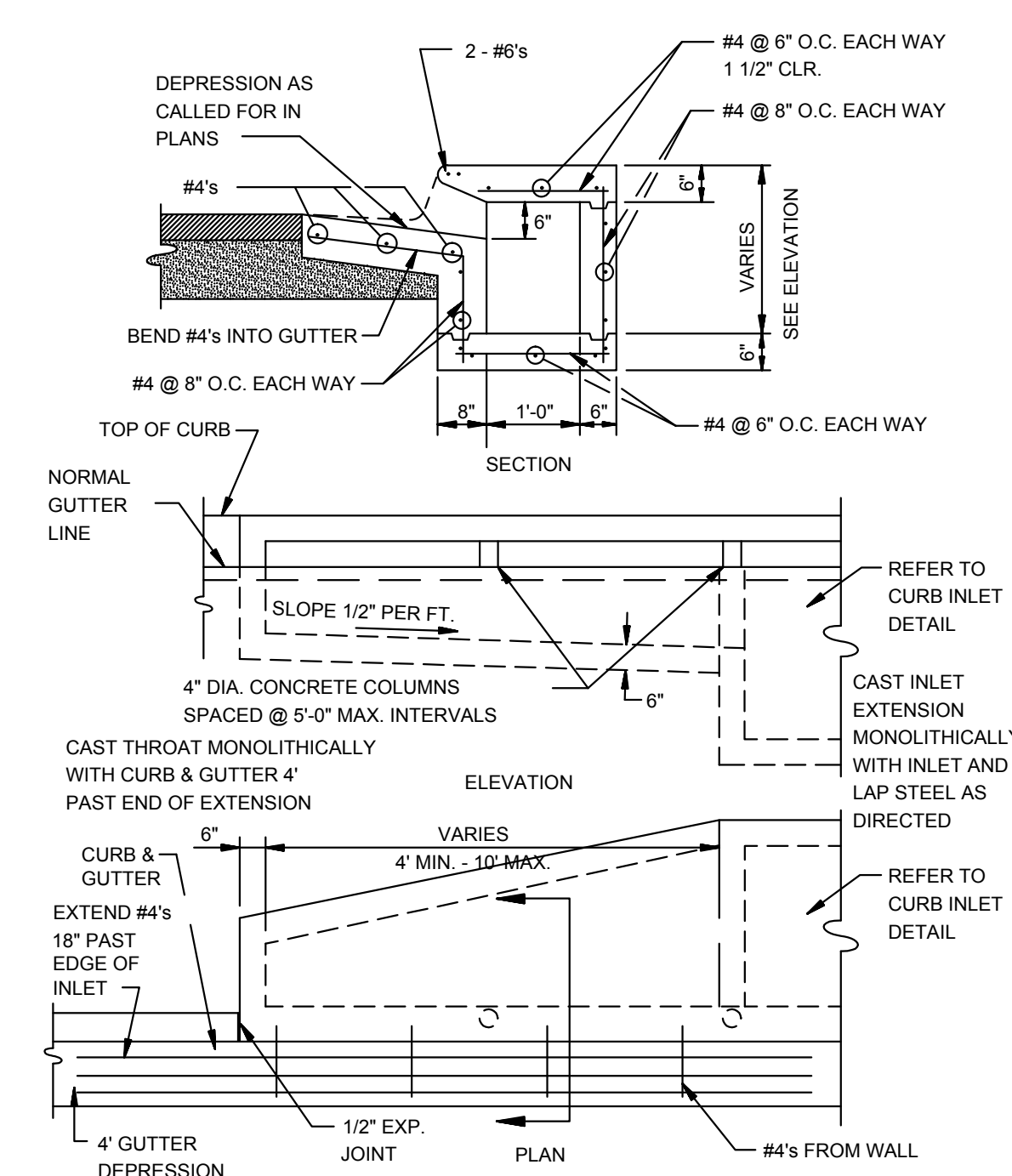
RECTANGULAR CURB INLET EXTENSION
N.T.S.



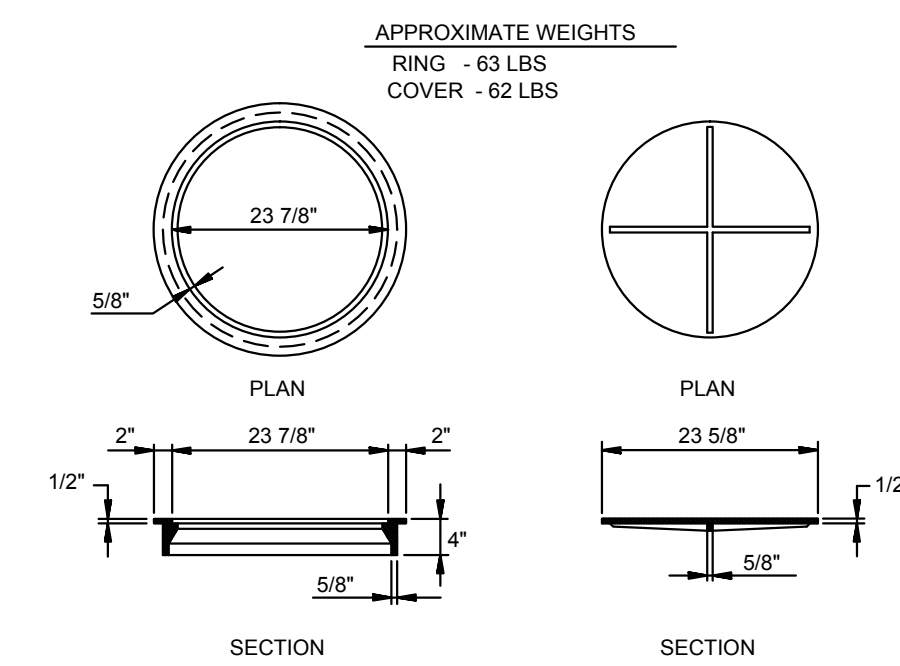
RECTANGULAR CURB INLET
N.T.S.



SECTION - TYPICAL CURB INLET - TYPE 'A'
N.T.S.

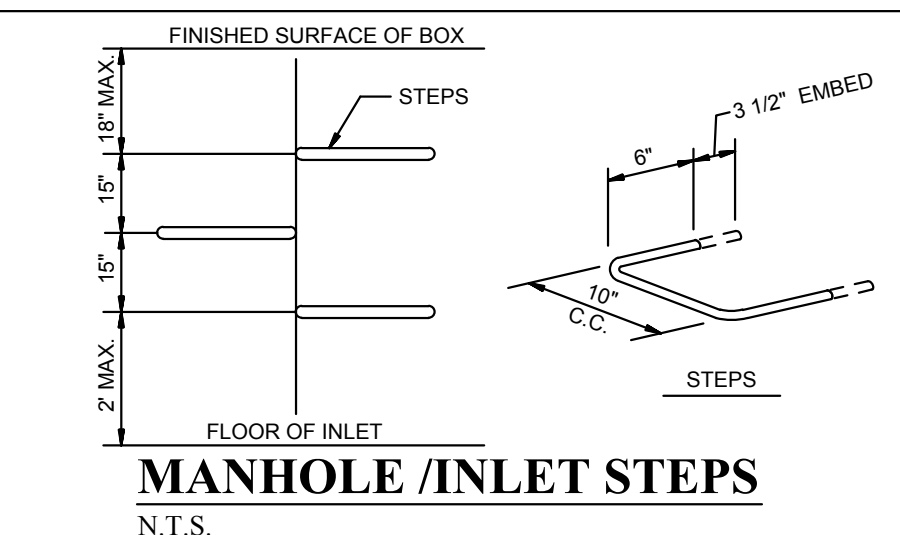


ALTERNATE CURB INLET EXTENSION
N.T.S.



TYPE I RING & COVER
N.T.S.

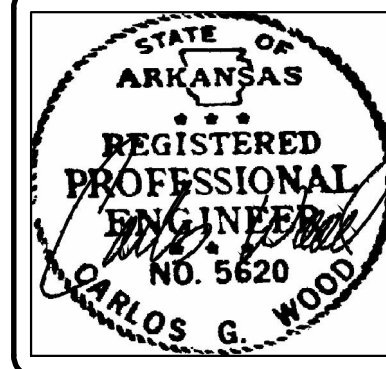
NOTE: TYPE I FRAME AND COVER PERMITTED ONLY ON STRUCTURES NOT SUBJECT TO VEHICULAR TRAFFIC.



MANHOLE / INLET STEPS
N.T.S.

STEPS SPECIFICATIONS:
A. MANHOLE STEPS: CORROSION RESISTANT, COATED AND REINFORCED WITH STEEL PER ASTM C-478. STEEL REINFORCING MINIMUM 1/2" DIAMETER.
B. CAPABLE OF SUPPORTING MINIMUM 300 LB. LOAD.
C. NON-SLIP TEXTURED TREADS.
D. REQUIRED IN ALL STRUCTURES 3'-0" DEEP OR DEEPER, UNLESS SPECIFIED OTHERWISE.

DET-1



BRIDGER PARK PHASE I
JONESBORO, AR

TYPICAL
STREET DETAILS

DATE: 4/16/16
REV:

DRAWN BY: BGW

CARLOS WOOD, P.E.
ENGINEERING CONSULTANT
148 CR 375
BONO, AR 72416
PHONE/FAX: (870) 972-8335
EMAIL: WOODENGR@SBOGLOBAL.NET
WEBSITE: WWW.WOODENGR.COM

