

- LEGEND
- EXISTING CONTOURS
 - PROPOSED CONTOURS
 - FLOW LINE
 - DIRECTION OF FLOW
 - EXISTING WATER
 - EXISTING SEWER
 - EASEMENTS
 - SETBACK
 - FOUND IRON PIN
 - SET IRON PIN
 - COMPUTED POINT

NOTES:

- GPS CONTROL - GPS OBSERVATION, ARKANSAS STATE PLANE NORTH ZONE
- HORIZONTAL CONTROL - NAD83, THIRD ORDER CLASS 1, ARKANSAS SPC NORTH ZONE
- VERTICAL CONTROL - NAVD 88, THIRD ORDER VERTICAL
- OWNER INFORMATION: VALLEY VIEW STORAGE LLC
ENGINEER INFORMATION: McALISTER ENGINEERING, 4508 STADIUM BLVD SUITE D, JONESBORO, AR 72404
- PROPERTY SHOWN HEREON IS LOCATED IN FLOOD ZONE X, PER FEMA FLOOD INSURANCE RATE MAP NUMBER 0503100150, PANEL 0150, SUFFIX C. NO PART OF PROPERTY LOCATED IN FLOODWAY. EFFECTIVE DATE: SEPTEMBER 27, 1991
- (ADA COMPLIANCE) ACCESSIBLE PARKING AND ROUTE MAXIMUM SLOPES - CROSS-SLOPES 1:50 (2 %), ACCESSIBLE ROUTE 1:20 (5 %), RAMPS 1:12 (8.3%)
- PLACE CONSTRUCTION ENTRANCE/EXIT TO CONTROL TRACKING OF SEDIMENT ONTO ROADWAYS. STABILIZE ANY CUT SLOPE IMMEDIATELY WITH SEEDING, SPRIGGING, SODDING, OR OTHER APPROVED METHOD UPON COMPLETION TO PREVENT EROSION.
- ALL UTILITIES EXIST ON SITE; THE NEAREST FIRE HYDRANT IS LOCATED APPROXIMATELY 193' DIRECTLY SOUTH OF THE EAST LINE OF THE SUBJECT ON SOUTHWEST DRIVE (US HWY 49).
- STABILIZE SLOPES GREATER THAN 3:1 WITH TERRACED LANDSCAPING, RIPRAP, GEOGRID, RETAINING WALL, PAVING OR OTHER ARCHITECT/ENGINEER APPROVED METHOD.
- THE DITCHLINE ACROSS THE FRONTAGE MAY BE MOLDED OUT TO REESTABLISH THE ORIGINAL ELEVATION AND FLOWLINE TO MAINTAIN PROPER DRAINAGE.
- FILL IN EXCESS OF 8" SHALL BE COMPACTED IN 8" LIFTS.
- ALL DRAINAGE STRUCTURES SHALL BE BUILT IN ACCORDANCE WITH THE CITY OF JONESBORO, CRAIGHEAD COUNTY, ARKANSAS STORMWATER DRAINAGE DESIGN MANUAL.
- EXISTING SOIL TYPE: COLLINS SILT LOAM (0-1% SLOPES) TYPE C
- MINIMUM REQUIRED ZONING SETBACKS: COMMERCIAL (1-3)
STREET SETBACK - 25'
SIDE SETBACK - 10'
REAR SETBACK - 20'
- PARKING REQUIREMENTS BASED ON "OFFICE SPACE" 1 SPACE PER 300 SF, 600 SF = 2 SPACES, 7 SPACES ARE PROVIDED (1 SPACE IS ADA COMPLIANT).

GRADING AND DRAINAGE

VALLEY VIEW MINI STORAGES
JONESBORO, ARKANSAS

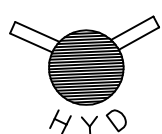
McALISTER ENGINEERING
CIVIL ENGINEERING AND LAND SURVEYING
4508 STADIUM BLVD, STE D
JONESBORO, AR 72404
870-931-1420

DRAWN BY: DW	CHECKED BY: CM/JH
SCALE: 1" = 30'	DATE: 23AUG16
CAD FILE 1671443JasonMarshallMiniVVCivil1	
DWG REF.	
JOB NO. 1671443	SHEET 2 / 5
SURVEY #:	

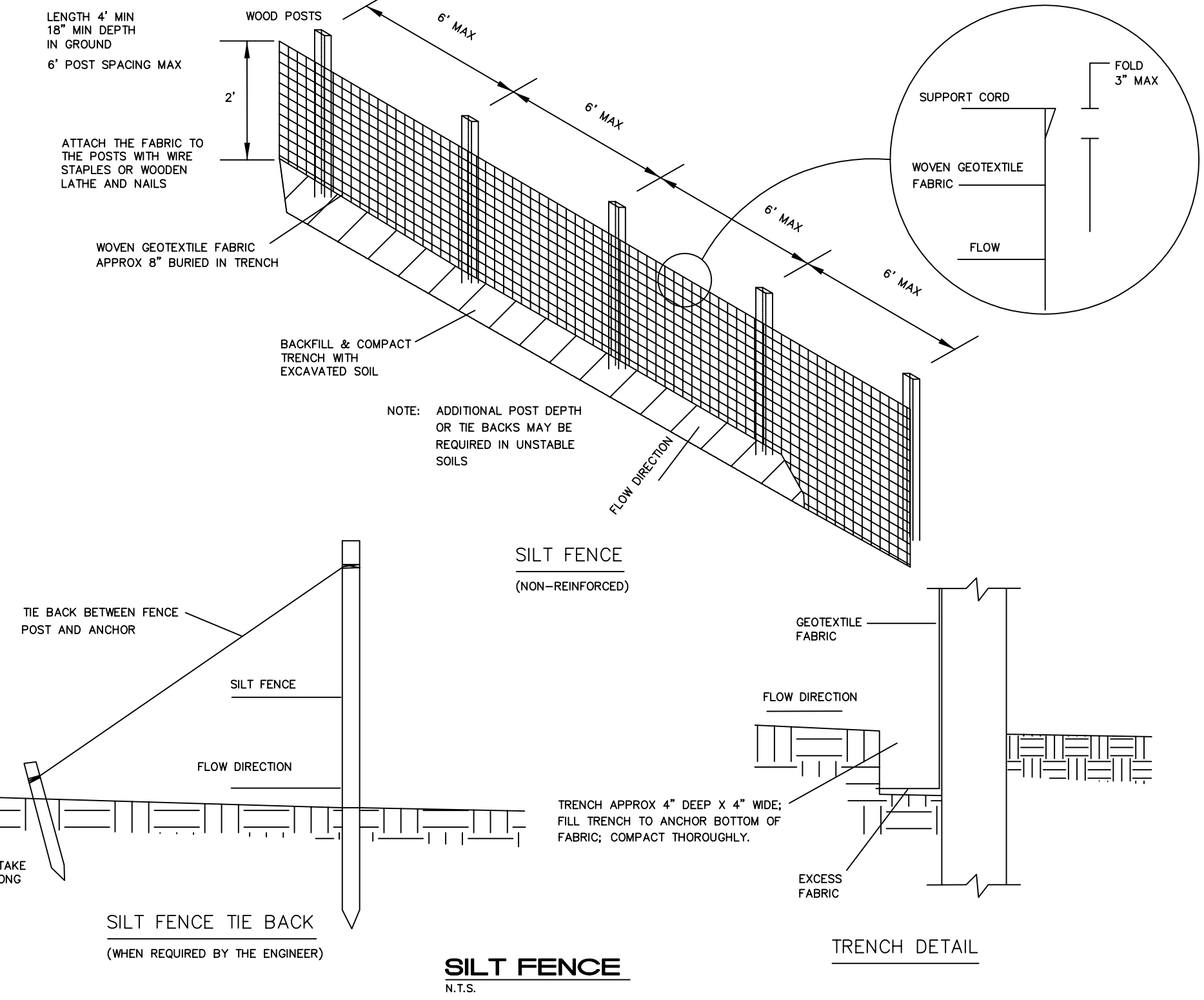
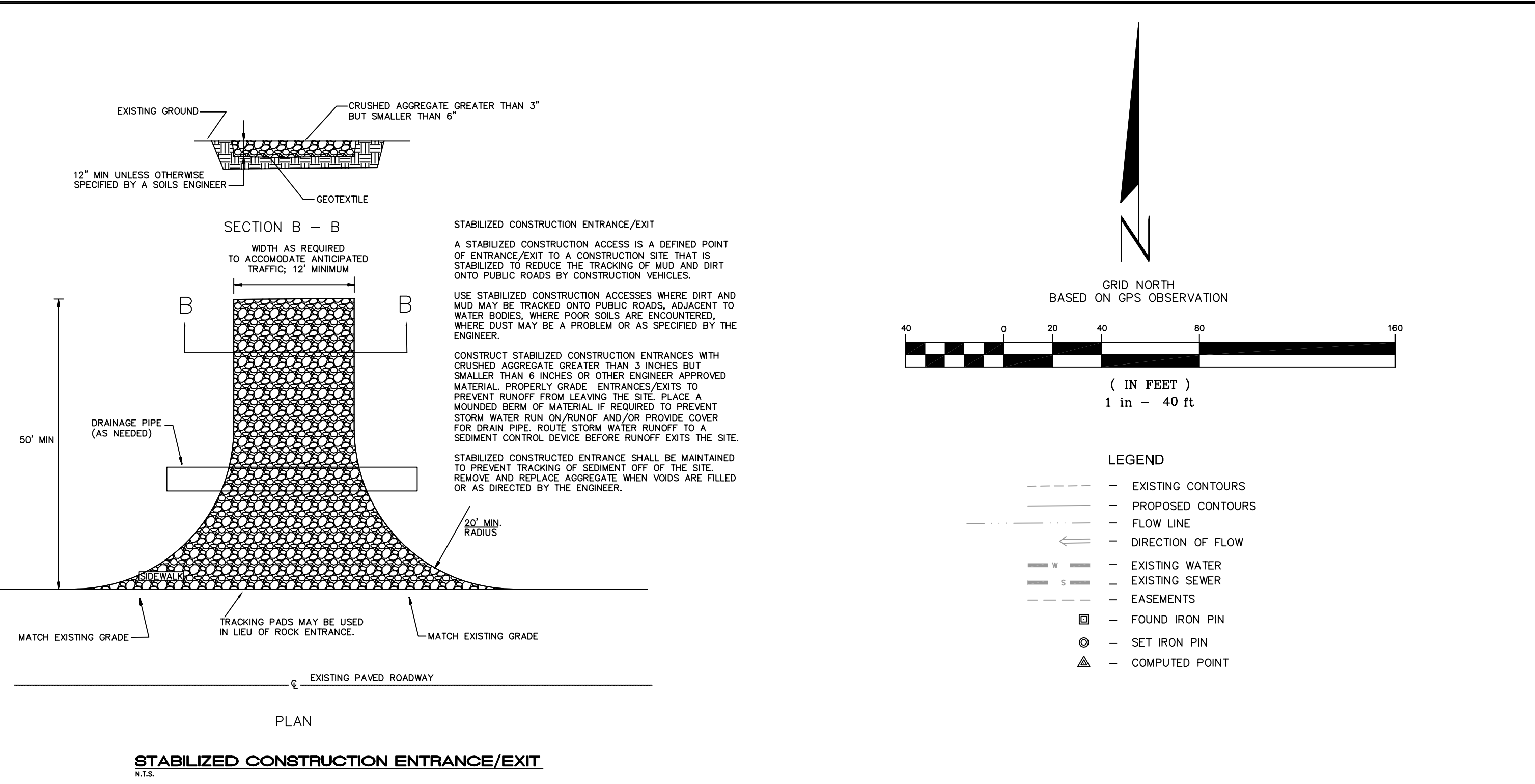
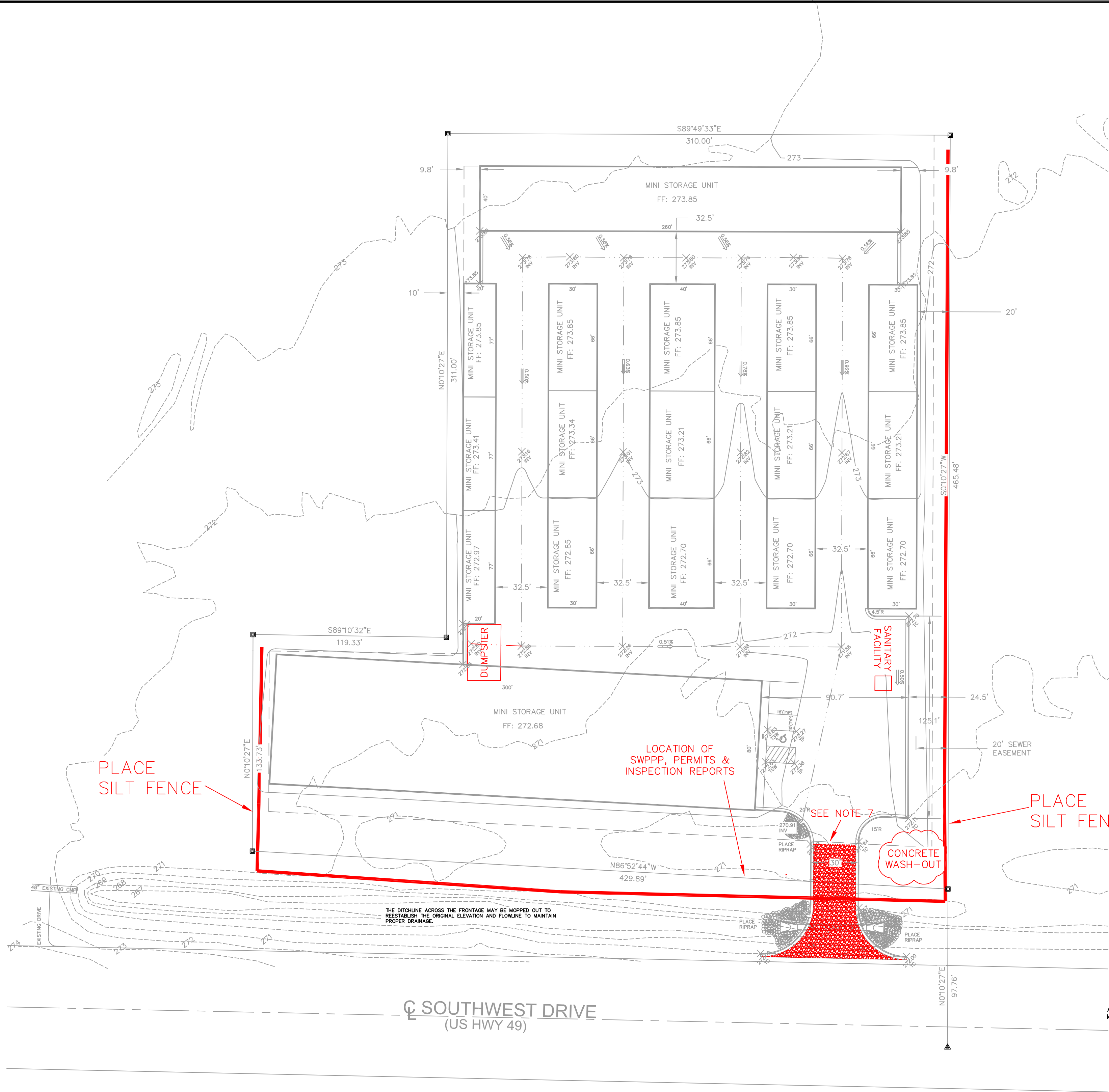
CLARENCE W. "Mac" McALISTER, PE, PS



Know what's below.
Call before you dig.



DATE	REVISION	BY



- NOTES:
- GPS CONTROL - GPS OBSERVATION, ARKANSAS STATE PLANE NORTH ZONE
 - HORIZONTAL CONTROL - NAD83, THIRD ORDER CLASS 1, ARKANSAS SPC NORTH ZONE
 - VERTICAL CONTROL - NAVD 88, THIRD ORDER VERTICAL
 - OWNER INFORMATION: VALLEY VIEW STORAGE LLC
ENGINEER INFORMATION: MCALISTER ENGINEERING, 4508 STADIUM BLVD SUITE D, JONESBORO, AR 72404
 - PROPERTY SHOWN HEREON IS LOCATED IN FLOOD ZONE X, PER FEMA FLOOD INSURANCE RATE MAP NUMBER 05031C0150, PANEL 0150, SUFFIX C. NO PART OF PROPERTY LOCATED IN FLOODWAY. EFFECTIVE DATE: SEPTEMBER 27, 1991
 - (ADA COMPLIANCE) ACCESSIBLE PARKING AND ROUTE MAXIMUM SLOPES - CROSS-SLOPES 1:50 (2 %), ACCESSIBLE ROUTE 1:20 (5 %), RAMPS 1:12 (8.3%)
 - PLACE CONSTRUCTION ENTRANCE/EXIT TO CONTROL TRACKING OF SEDIMENT ONTO ROADWAYS. STABILIZE ANY CUT SLOPE IMMEDIATELY WITH SEEDING, SPRIGGING, SODDING, OR OTHER APPROVED METHOD UPON COMPLETION TO PREVENT EROSION.
 - ALL UTILITIES EXIST ON SITE; THE NEAREST FIRE HYDRANT IS LOCATED APPROXIMATELY 193' DIRECTLY SOUTH OF THE EAST LINE OF THE SUBJECT ON SOUTHWEST DRIVE (US HWY 49).
 - STABILIZE SLOPES GREATER THAN 3:1 WITH TERRACED LANDSCAPING, RIPRAP, GEGRID, RETAINING WALL, PAVING OR OTHER ARCHITECT/ENGINEER APPROVED METHOD.
 - THE DITCHLINE ACROSS THE FRONTAGE MAY BE MOVED OUT TO REESTABLISH THE ORIGINAL ELEVATION AND FLOWLINE TO MAINTAIN PROPER DRAINAGE.
 - FILL IN EXCESS OF 8" SHALL BE COMPACTED IN 8" LIFTS.
 - ALL DRAINAGE STRUCTURES SHALL BE BUILT IN ACCORDANCE WITH THE CITY OF JONESBORO, CRAIGHEAD COUNTY, ARKANSAS STORMWATER DRAINAGE DESIGN MANUAL.
 - EXISTING SOIL TYPE: COLLINS SILT LOAM (0-1% SLOPES) TYPE C
 - MINIMUM REQUIRED ZONING SETBACKS: COMMERCIAL (1-3) STREET SETBACK - 25' SIDE SETBACK - 10' REAR SETBACK - 20'
 - PARKING REQUIREMENTS BASED ON "OFFICE SPACE" 1 SPACE PER 300 SF, 600 SF = 2 SPACES, 7 SPACES ARE PROVIDED (1 SPACE IS ADA COMPLIANT).

EROSION CONTROL PLAN

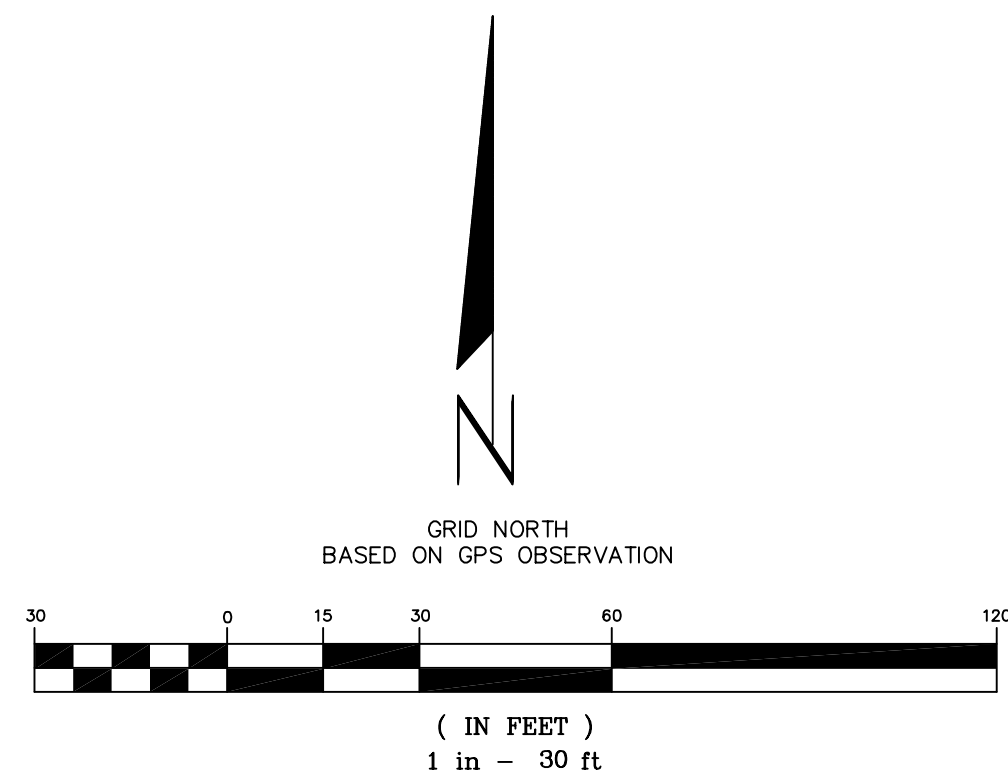
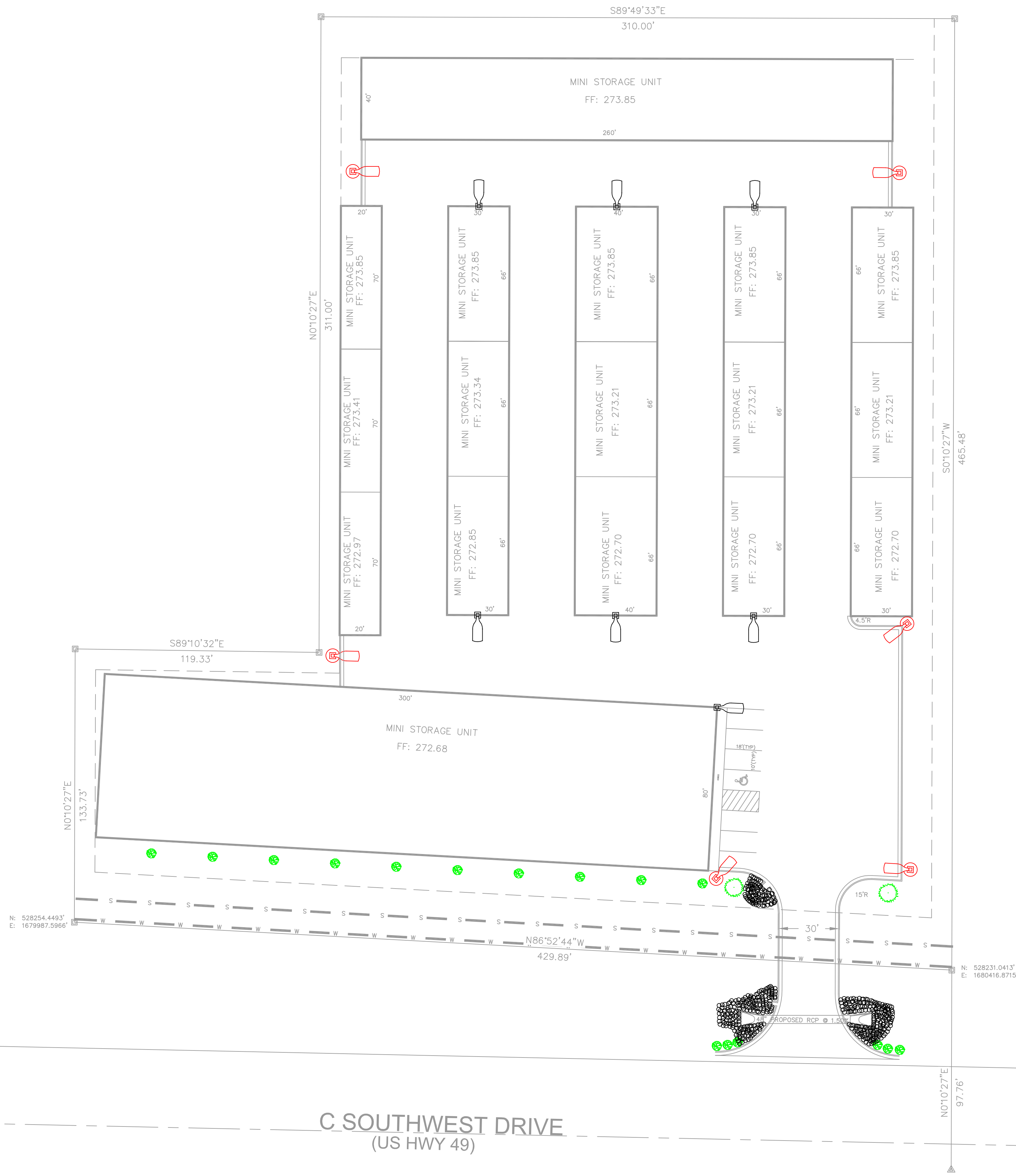


VALLEY VIEW MINI STORAGES
JONESBORO, ARKANSAS

MCALISTER ENGINEERING
CIVIL ENGINEERING AND LAND SURVEYING
4508 STADIUM BLVD, STE D
JONESBORO, AR 72404
870-931-1420

CLARENCE W. "MAC" MCALISTER, PE, PS

DRAWN BY: DW	CHECKED BY: CM/JH
SCALE: 1"= 40'	DATE: 23AUG16
CAD FILE 1671443JasonMarshallMiniVVCivil1	
DWG REF.	
JOB NO. 1671443	SHEET 3 / 5
SURVEY #:	



- LEGEND
- PLANT OAKLAND HOLLY SHRUB OR OTHER CITY APPROVED SHRUBBERY.
 - PLANT SWEETBAY MAGNOLIA TREE OR OTHER CITY APPROVED TREE.
 - LED POLES WITH DOWN LIGHTING
 - LIGHT PACKS

C SOUTHWEST DRIVE
(US HWY 49)

LANDSCAPE AND LIGHTING PLAN

VALLEY VIEW MINI STORAGES
JONESBORO, ARKANSAS

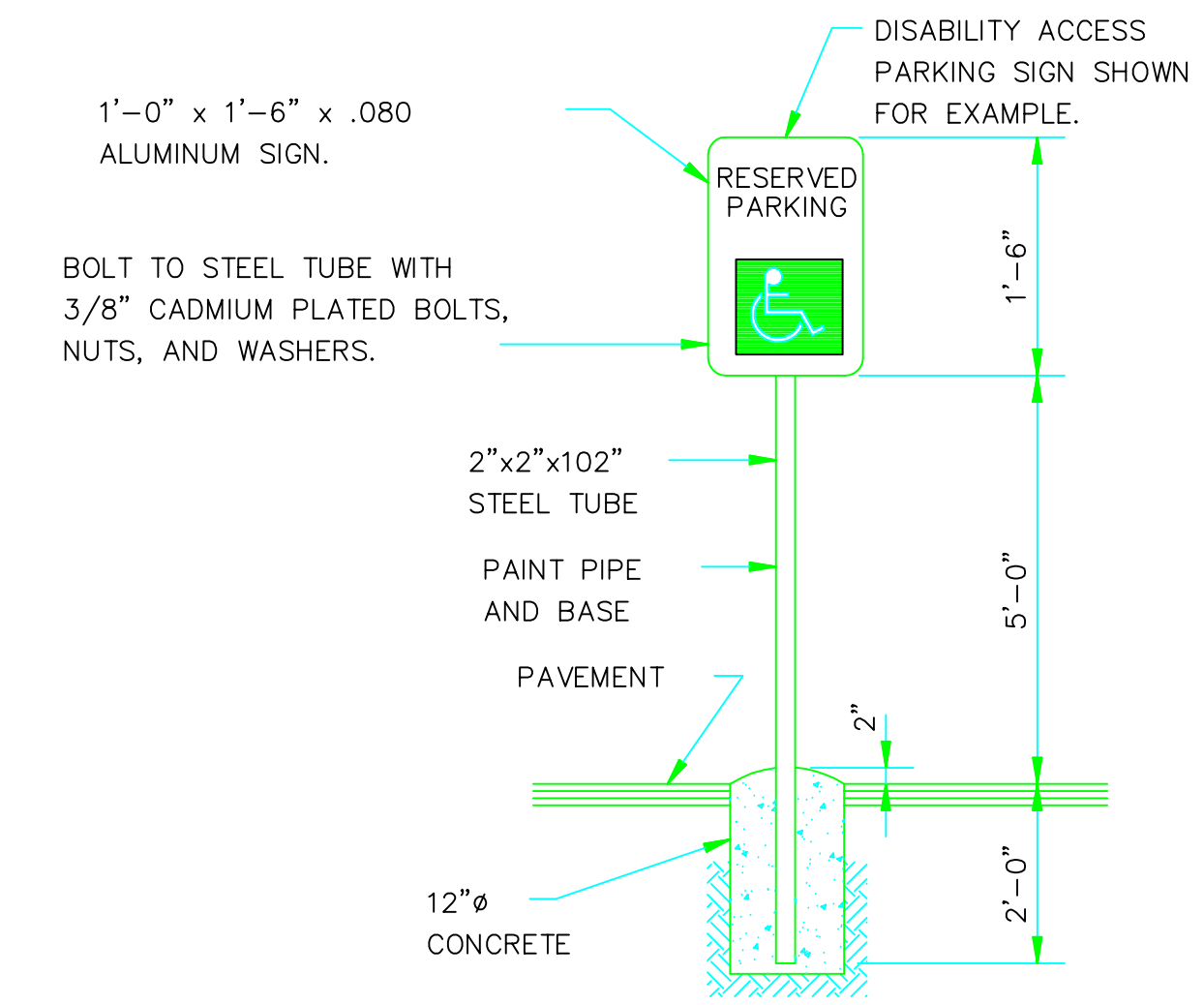


Know what's below.
Call before you dig.

MCALISTER ENGINEERING
CIVIL ENGINEERING AND LAND SURVEYING
4508 STADIUM BLVD, STE D
JONESBORO, AR 72404
870-931-1420

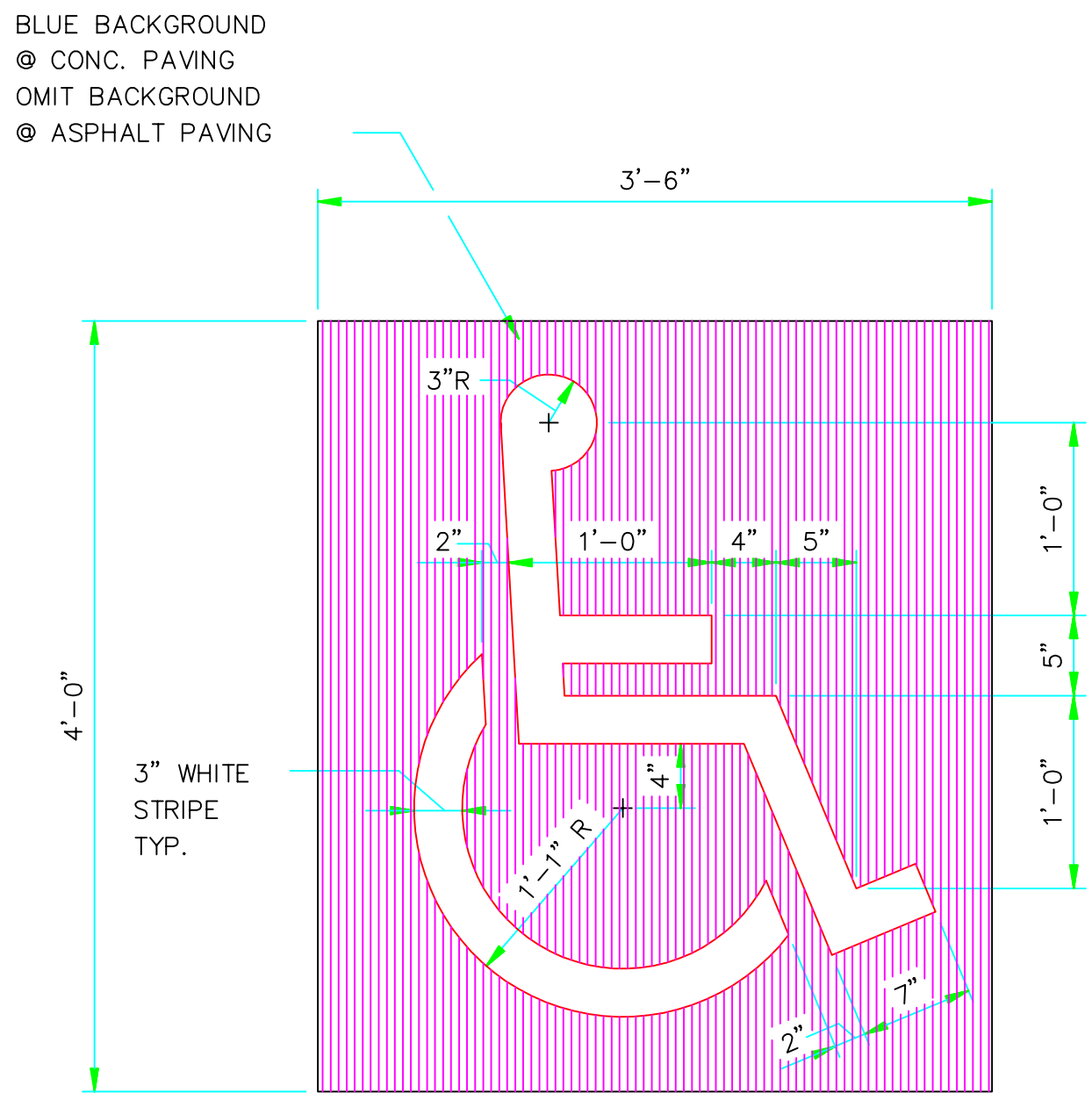
DRAWN BY: DW	CHECKED BY: CM/JH
SCALE: 1"= 30'	DATE: 23AUG16
CAD FILE 1671443JasonMarshallMiniVVCivil1	
DWG REF.	
JOB NO. 1671443	SHEET 4 / 5
SURVEY #:	

CLARENCE W. "MAC" MCALISTER, PE, PS

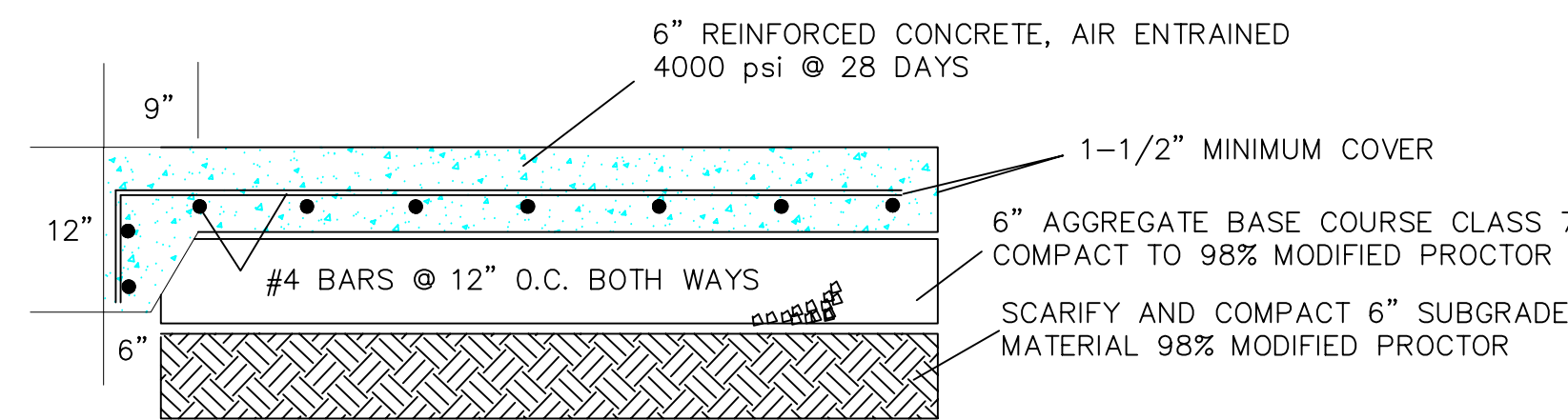


SIGN DETAIL
N.T.S.

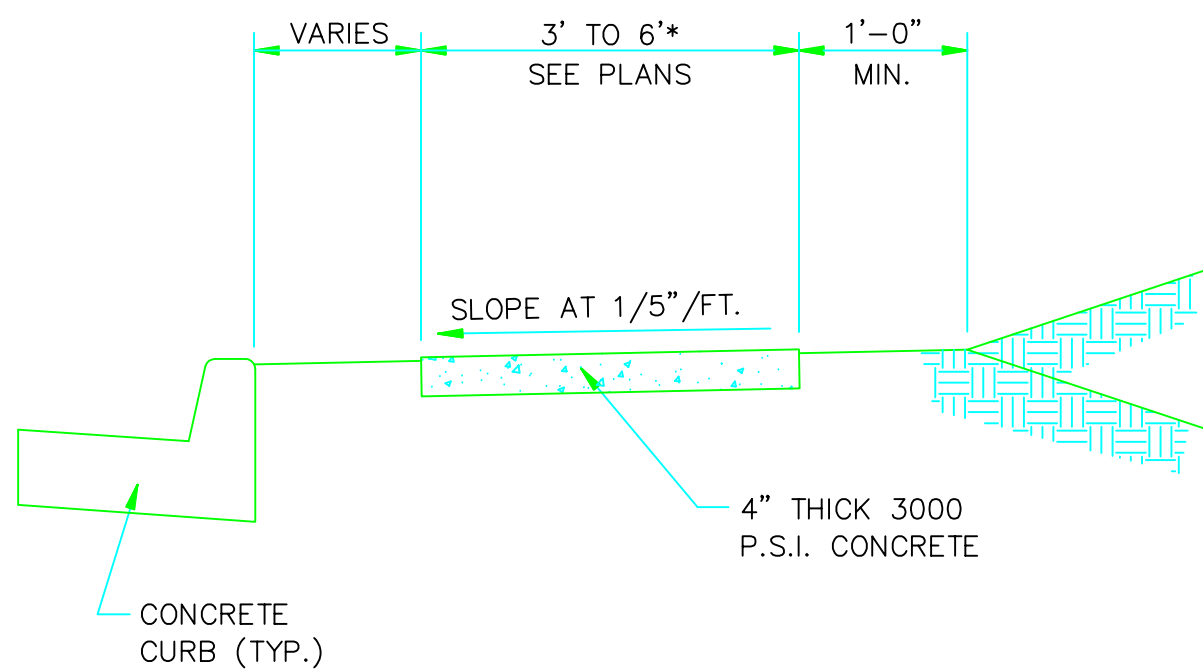
NOTE:
ALL SIGNS SHALL CONFORM TO MUTCD AND SHALL BE HIGH INTENSITY.



PARKING STALL SYMBOL
N.T.S.

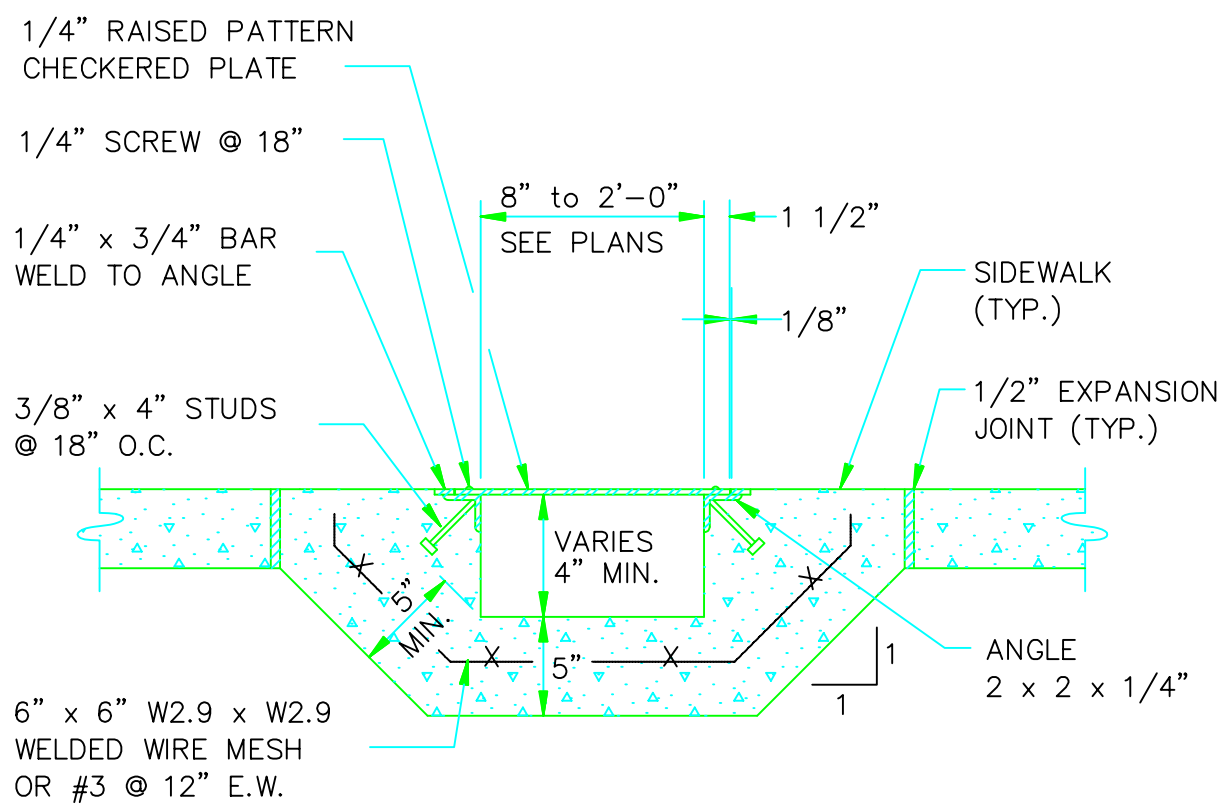


SECTION - CONCRETE PAVEMENT
W\ TURN DOWN

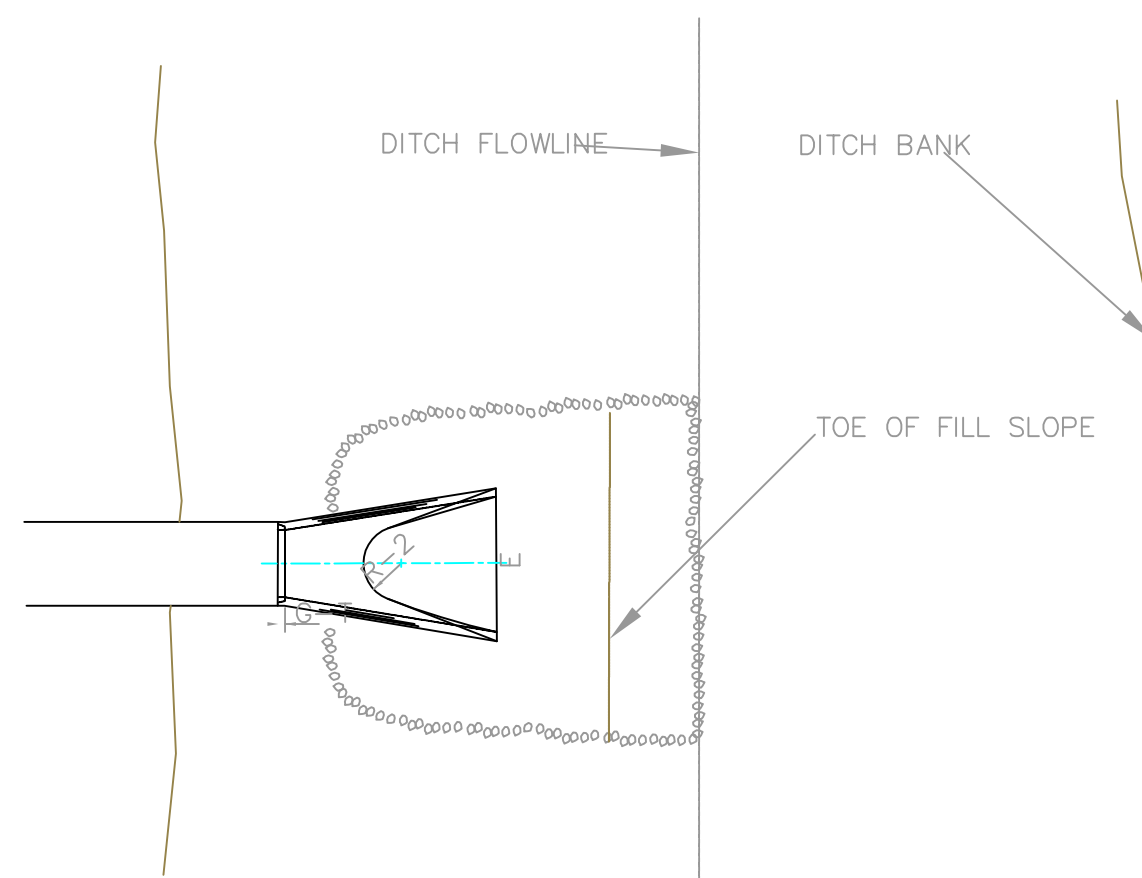


TYPICAL SECTION - SIDEWALK
N.T.S.

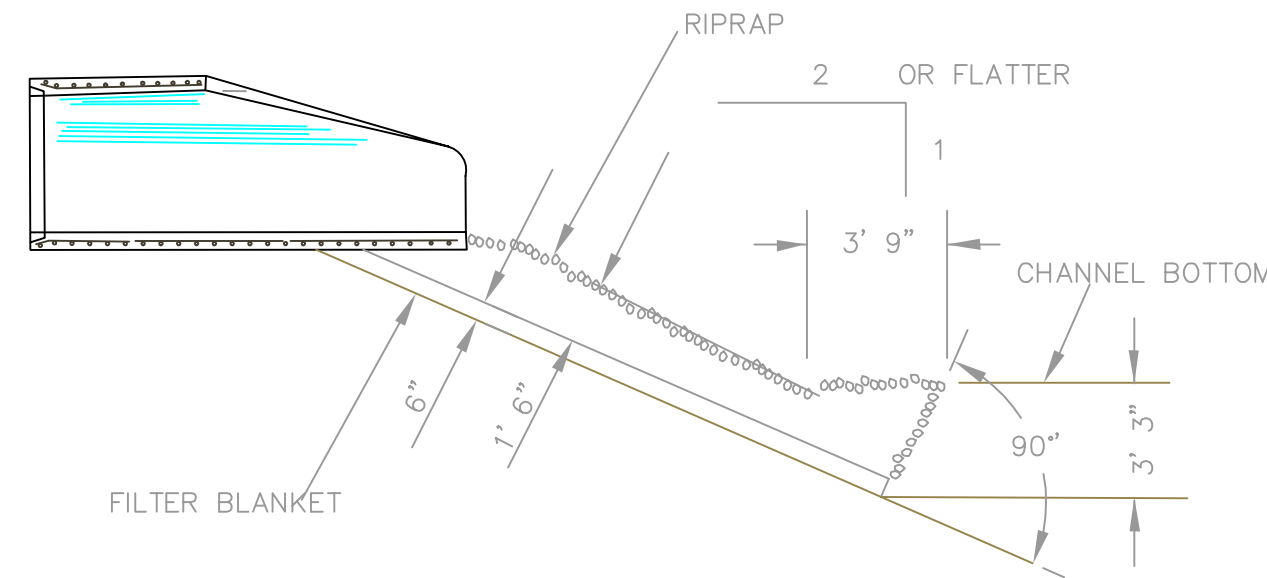
* PLACE GROOVE JOINTS ON 12' INTERVAL



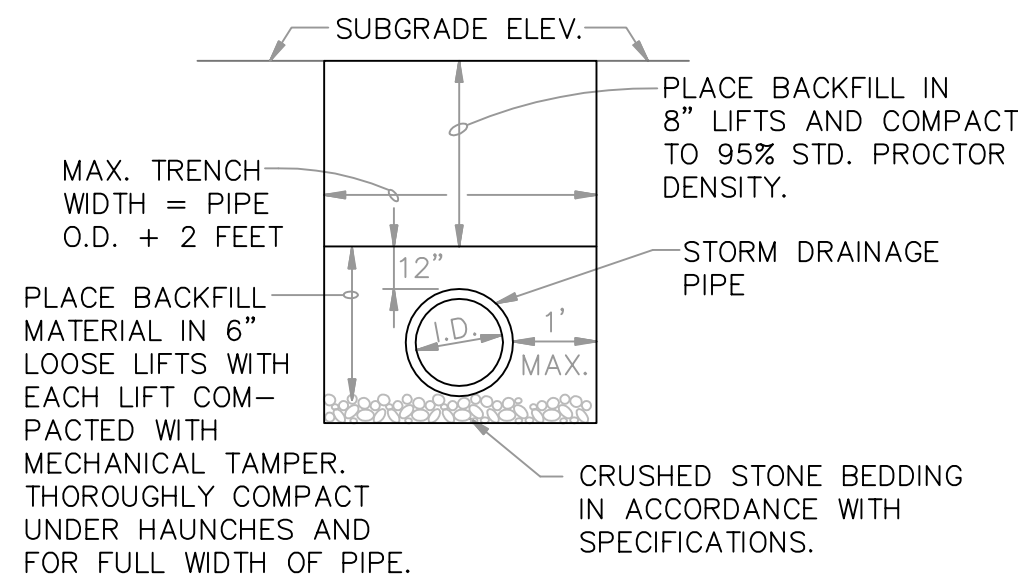
SIDEWALK DRAIN
N.T.S. (SECTION)



PLAN - DUMPED RIPRAP

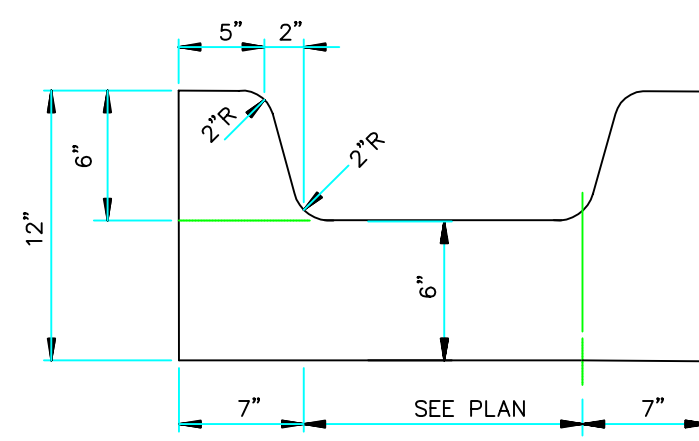


SECTION - DUMPED RIPRAP

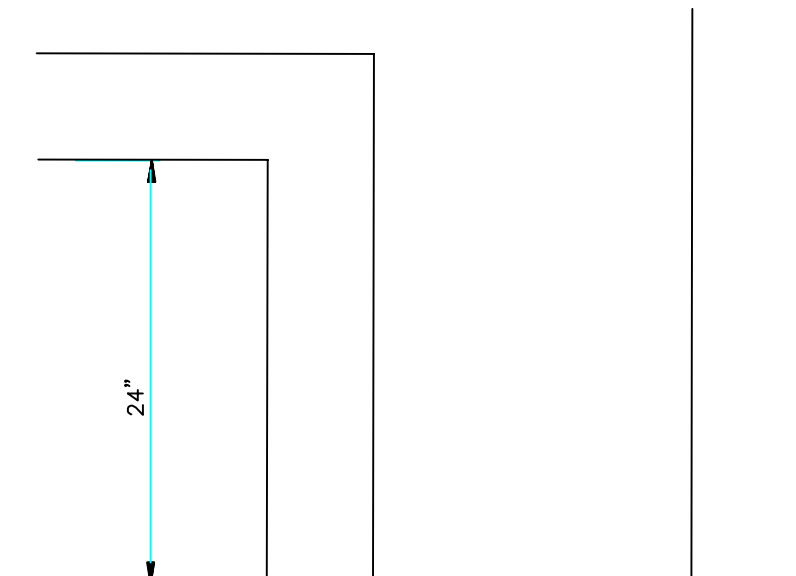


DRAINAGE PIPE TRENCH DETAIL
N.T.S.

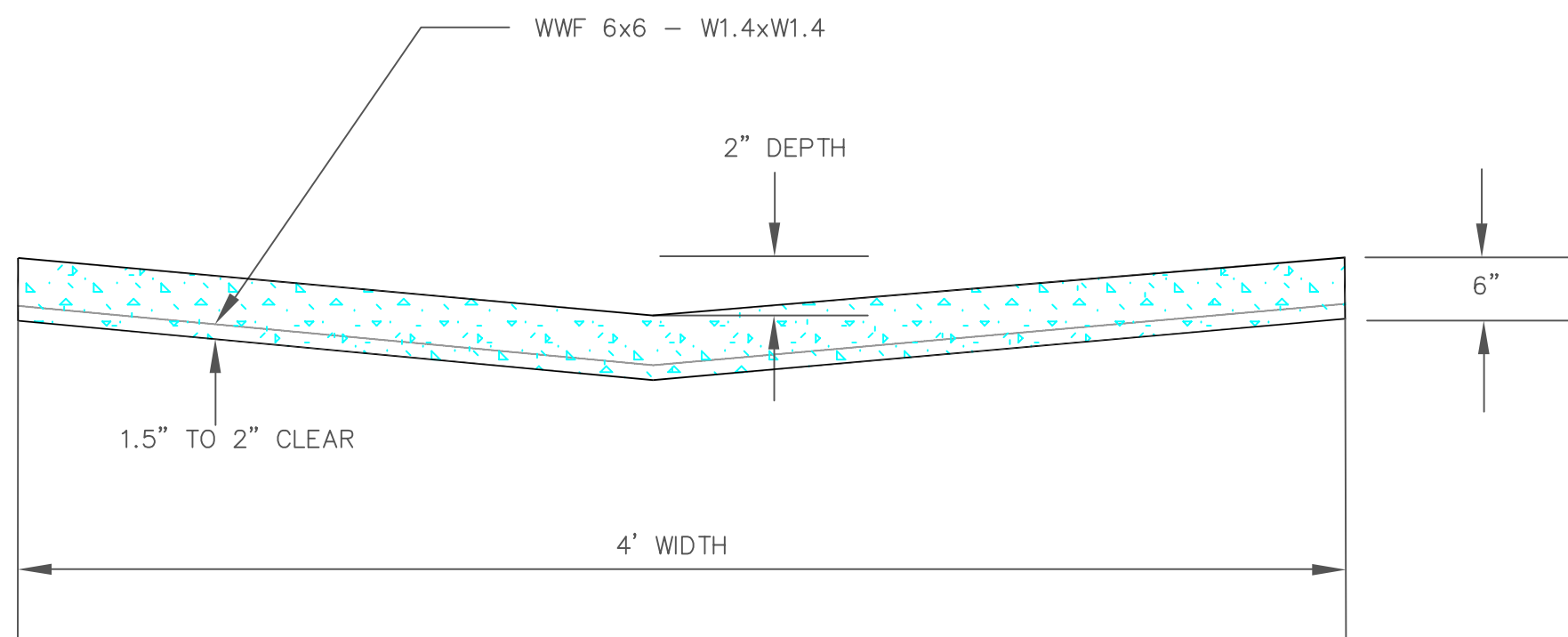
NOTE: TO BE USED WITH NEW STREET CONSTRUCTION. SEE DRAWING NO. PT-1 FOR EXISTING STREET CUTS.



CURB CHANNEL
N.T.S.

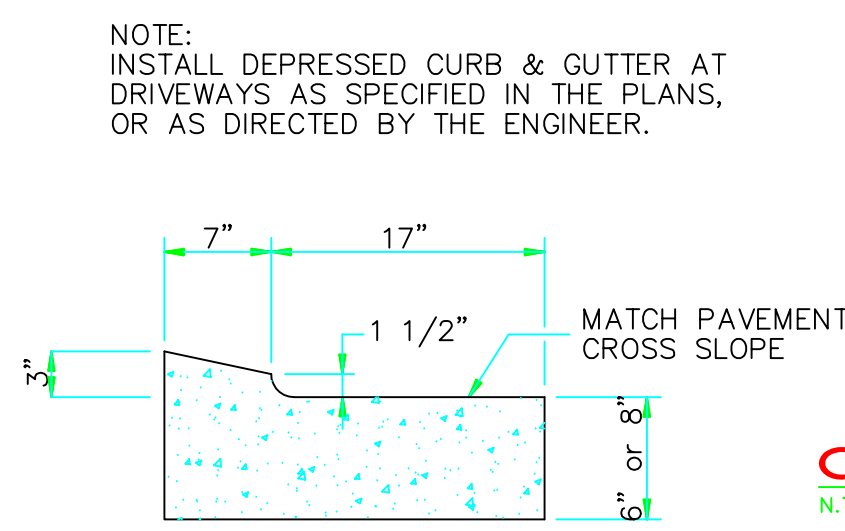
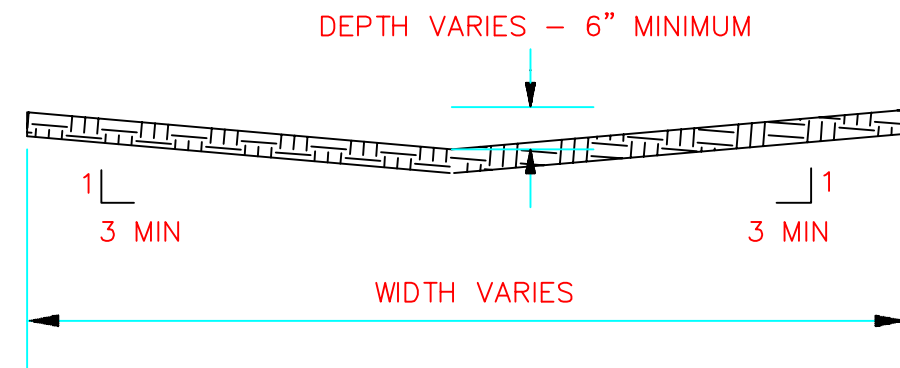


CURB CHANNEL PLAN
N.T.S.

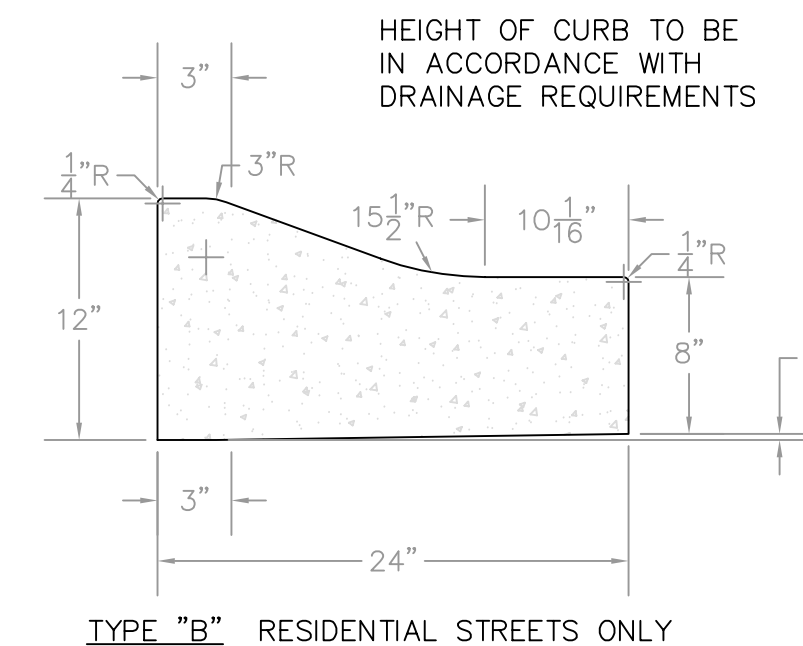


DETAIL - DRAINAGE SWALE
N.T.S.

REMOVE OR ADD ASPHALT AS NECESSARY TO TRANSITION TO CONCRETE SWALE. CONTRACTION JOINTS AT 12' INTERVALS.



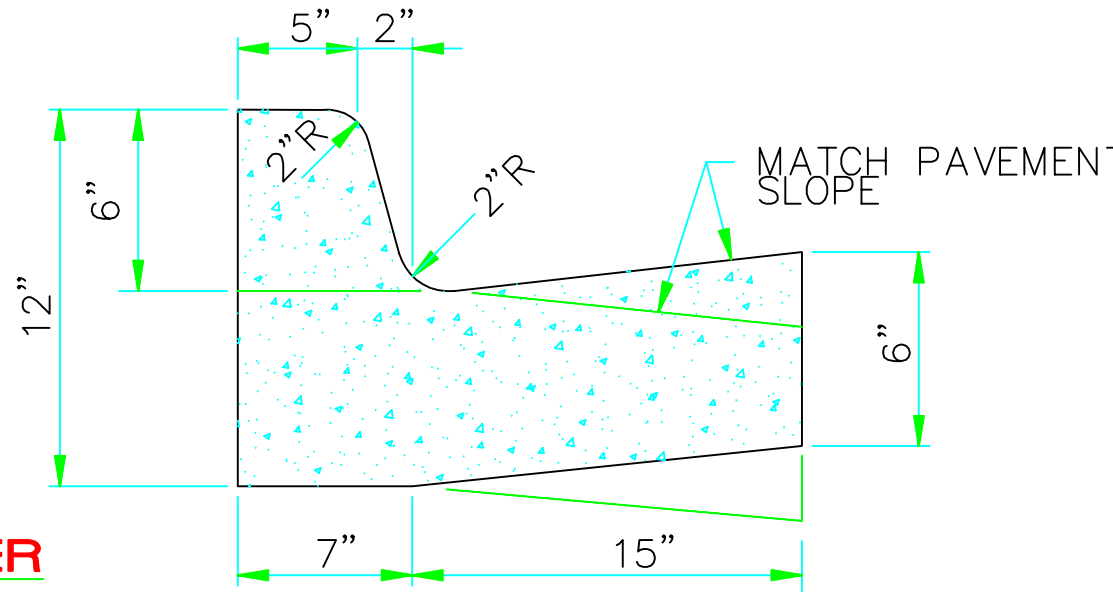
DEPRESSED CURB
N.T.S.



COMBINATION CURB AND GUTTER
N.T.S.

NOTE: CONTRACTION AND EXPANSION JOINTS SHALL BE CONSTRUCTED AT 15' AND 45' INTERVALS RESPECTIVELY.

NO DRIVEWAY CUTS ALLOWED WITH THIS TYPE OF CURB.



BARRIER CURB
N.T.S.

DETAILS

VALLEY VIEW MINI STORAGES JONESBORO, ARKANSAS

MCALISTER ENGINEERING CIVIL ENGINEERING AND LAND SURVEYING

4508 STADIUM BLVD STE D
JONESBORO, AR 72404
870-931-1420

CLARENCE W. "MAC" MCALISTER, PE, PS

DRAWN BY: DW

SCALE: 1" = 50'

CAD FILE

DWG REF.

JOB NO.

PROJECT

CHECKED BY: CM

DATE: 11JUL16

SHEET 5 / 5

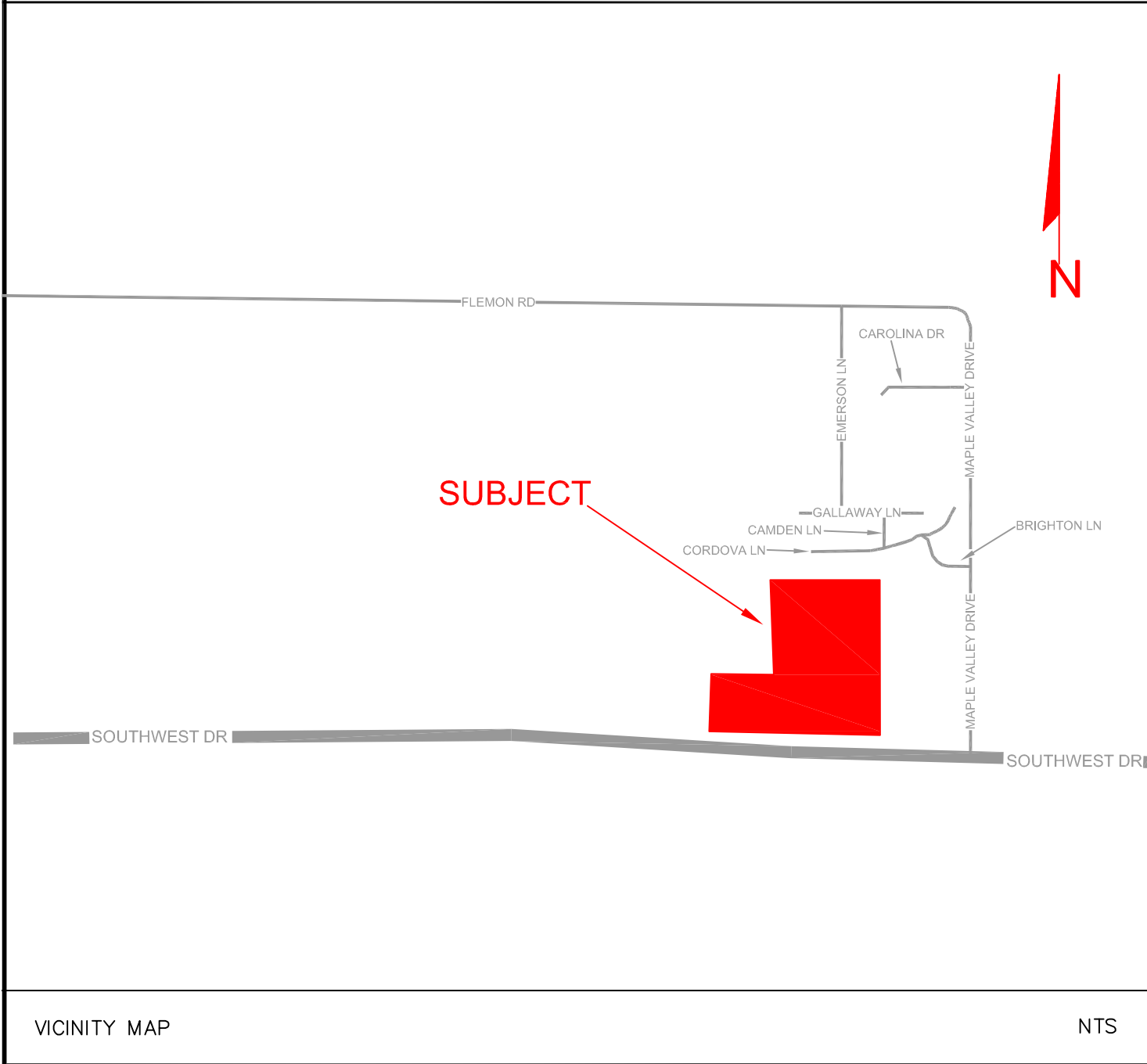
VALLEY VIEW MINI STORAGE

JONESBORO, ARKANSAS

AUGUST, 2016

INDEX TO SHEETS

- 1 OF 5 TITLE SHEET / INDEX
- 2 OF 5 GRADING/DRAINAGE PLAN
- 3 OF 5 EROSION CONTROL PLAN
- 4 OF 5 EROSION CONTROL PLAN
- 5 OF 5 DETAILS



VALLEY VIEW MINI STORAGES JONESBORO, ARKANSAS		
MCALISTER ENGINEERING CIVIL ENGINEERING AND LAND SURVEYING <small>4508 STADIUM BLVD STE D JONESBORO, AR 72404 870-931-1420</small>	DRAWN BY: DW	CHECKED BY: CM
	SCALE:	DATE: 11JUL16
	CAD FILE 1671443JasonMarshallMiniVVCivil1	
	DWG REF.	
CLARENCE W. "MAC" MCALISTER, PE, PS	JOB NO. 1671443	SHEET 1 / 5 △
	PROJECT 1671443	

DATE	REVISION	BY