

LEGEND	
	CURB
	EXISTING CONTOUR
	PROPOSED CONTOUR
	STORM DRAIN INLET
	STORM DRAIN PIPE
	BENCHMARK

PIPE NOTE:

ALL PIPE SHALL MEET THE FOLLOWING STANDARDS.

- ALUMINIZED STEEL TYPE 2 STEEL PIPE
 - ASTM A-929
 - ASTM A-760
- RCP CLASS III OR CLASS IV
 - ASTM C-76
 - ASTM C-506
 - ASTM C-507

NOTE:

DEVELOPER SHALL OBTAIN GRADING PERMIT FROM THE CITY OF JONESBORO ENGINEERING DEPARTMENT PRIOR TO COMMENCING EARTHWORK AND/OR CLEARING OPERATIONS.

DEVELOPER SHALL OBTAIN REQUIRED ADEQ PERMIT PRIOR TO COMMENCING WORK ON THE SITE. PREPARE A SWPP PLAN, AND DISPLAY THEM FOR PUBLIC ACCESS AT THE SITE.

SURVEY CONTROL REFERENCE MARKS:

- JONESBORO MONUMENT # 89
 - JONESBORO MONUMENT # 43
- VERTICAL CONTROL IS NAVD 88
HORIZONTAL CONTROL IS NAD 83

STR-1



BARRINGTON PARK PHASE VIII

JONESBORO, AR

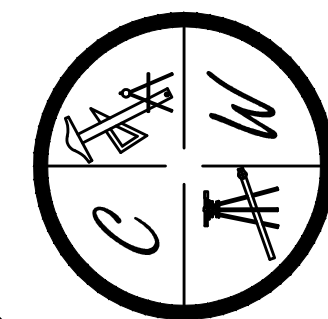
TOPOGRAPHY, DRAINAGE, & GRADING PLAN

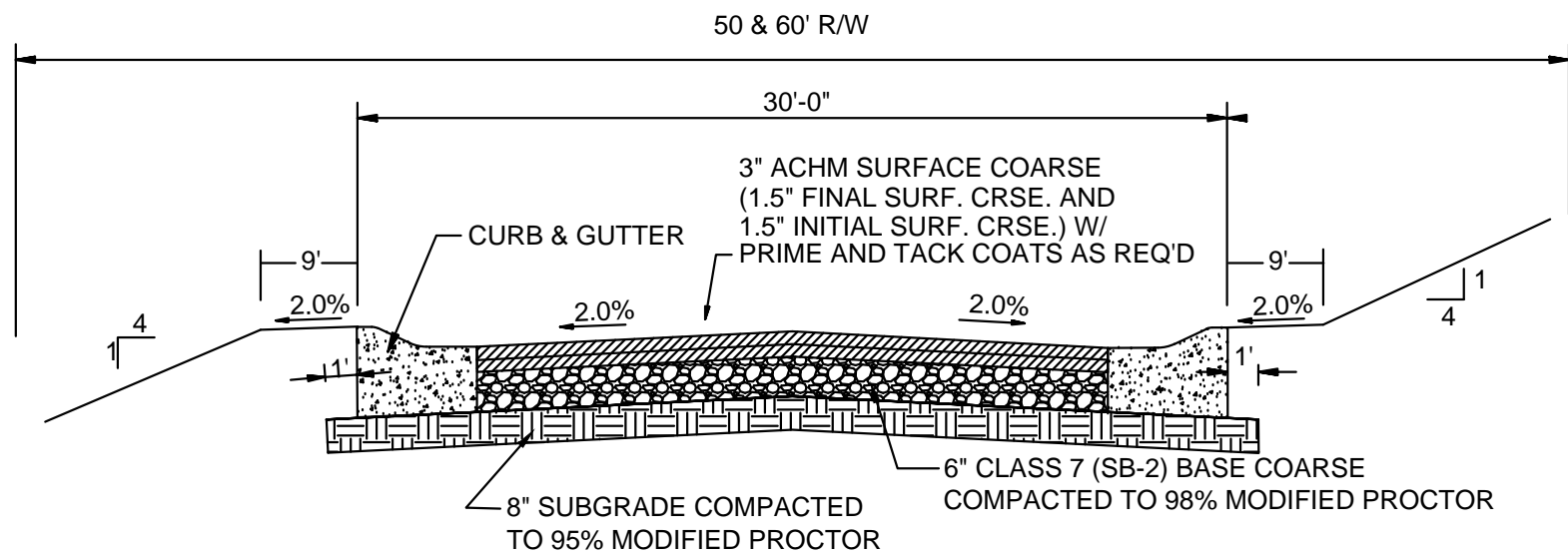
DATE: 10/30/15

REV:

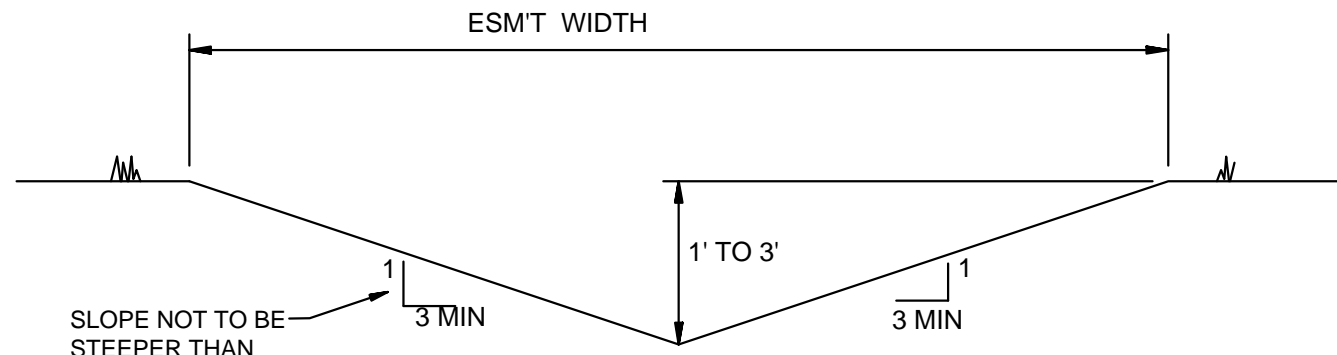
DRAWN BY: BGW

CARLOS WOOD, P.E.
ENGINEERING CONSULTANT
148 CR 375
BONO, AR 72416
PHONE/FAX: (870) 972-8335
EMAIL: WOODENGR@SBCGLOBAL.NET
WEBSITE: WWW.WOODENGR.COM

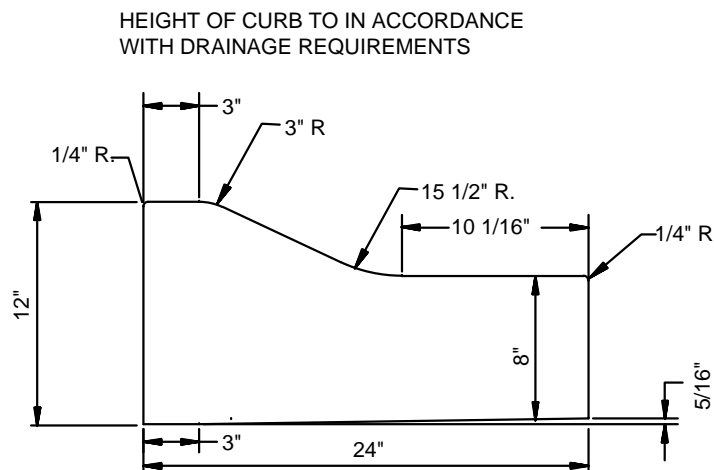




TYPICAL SECTION - INTERIOR STREETS
N.T.S.



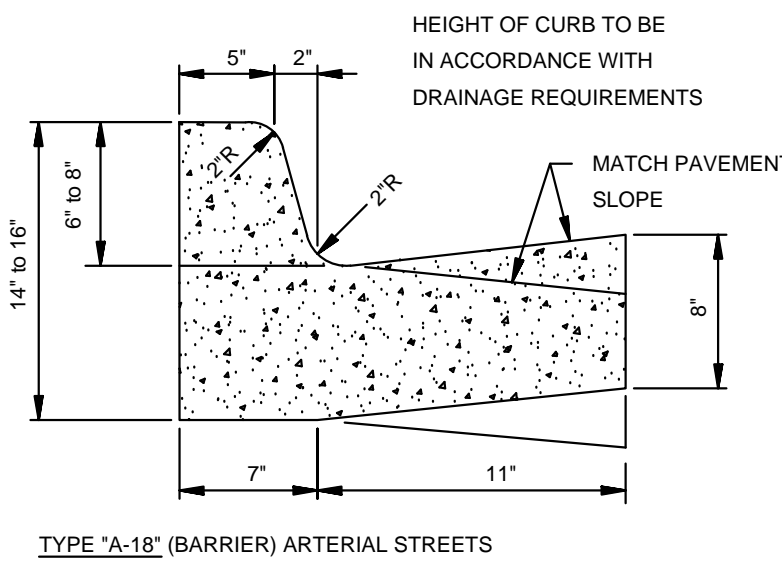
'A' TYPICAL DITCH DETAIL
N.T.S.



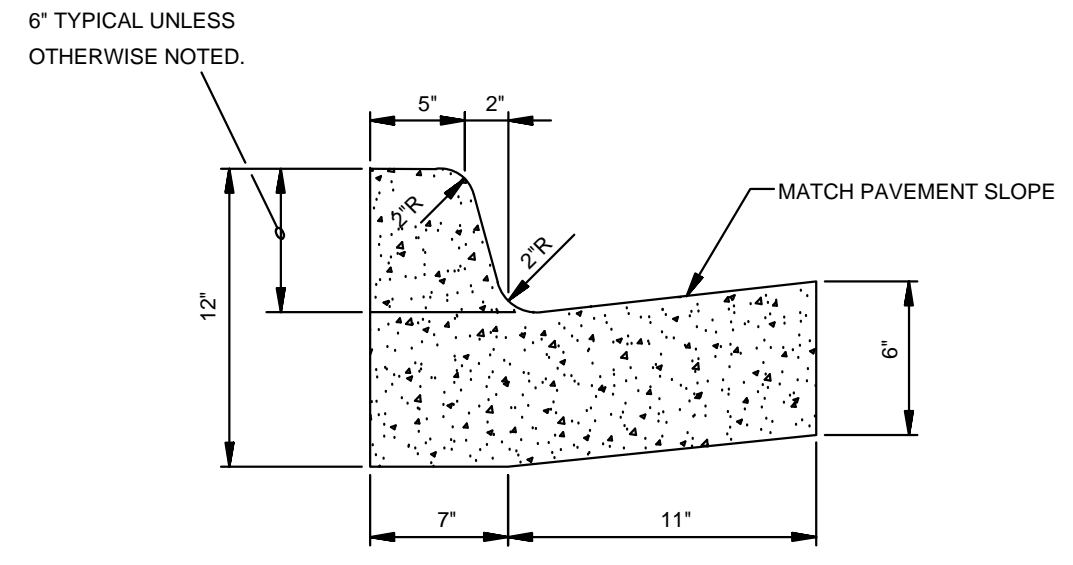
TYPE 'B' CURB & GUTTER
N.T.S.

NOTE: CONTRACTION AND EXPANSION JOINTS SHALL BE CONSTRUCTED IN ACCORDANCE WITH THE CITY OF JONESBORO SPECIFICATIONS

NO DRIVEWAY CUTS ALLOWED WITH THIS TYPE OF CURB



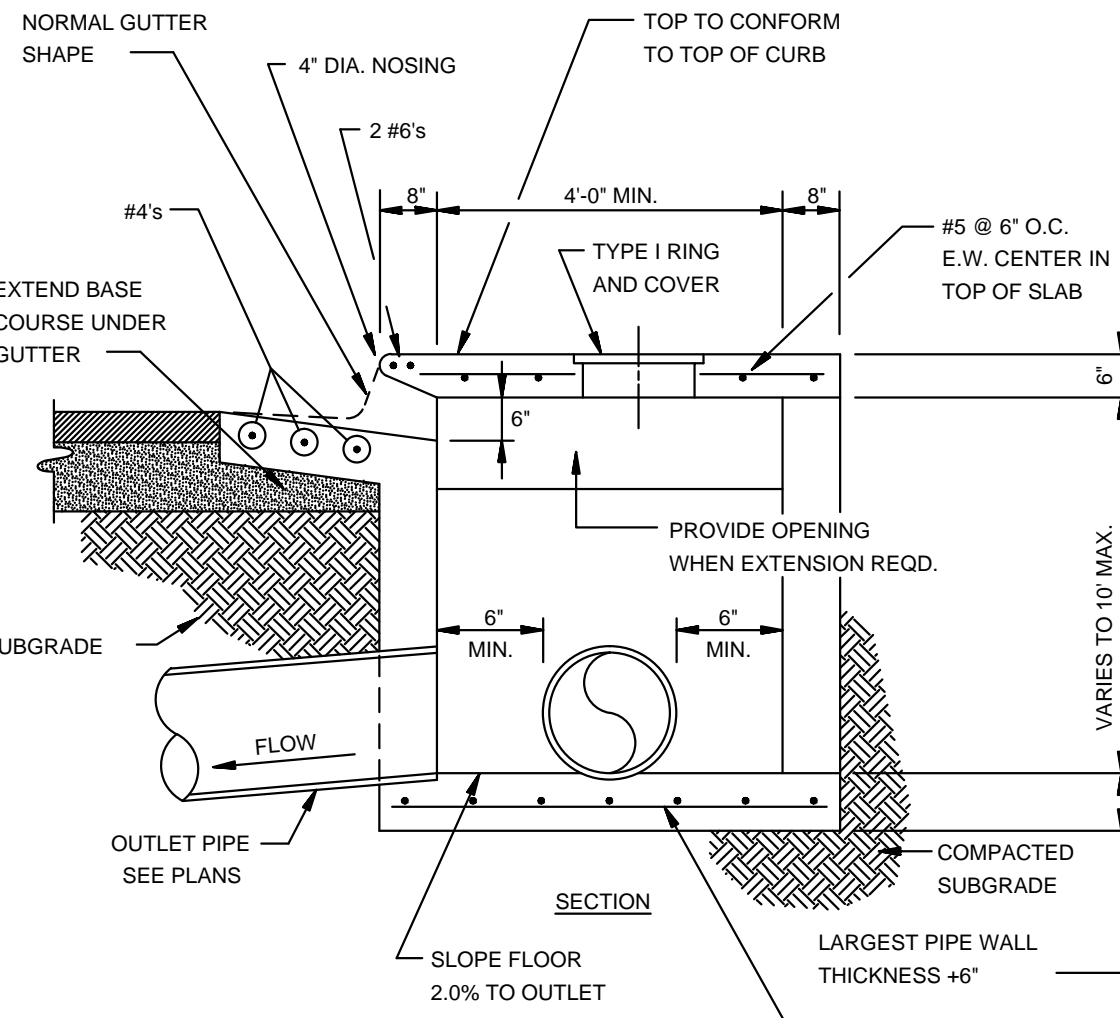
TYPE 'A-18' (BARRIER) ARTERIAL STREETS



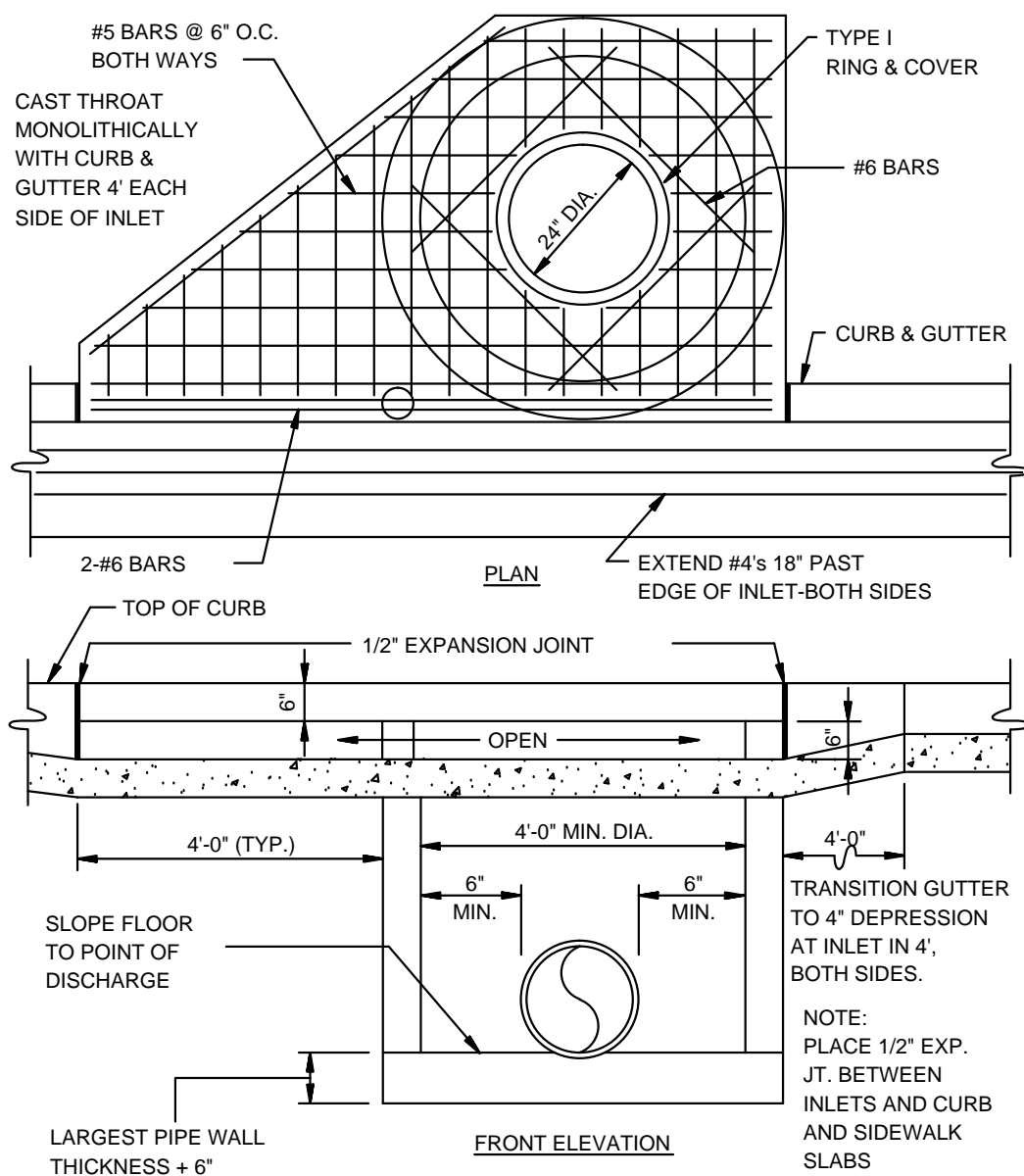
TYPE 'A-18' (BARRIER) RESIDENTIAL & COLLECTOR STREETS

COMBINATION CURB & GUTTER
N.T.S.

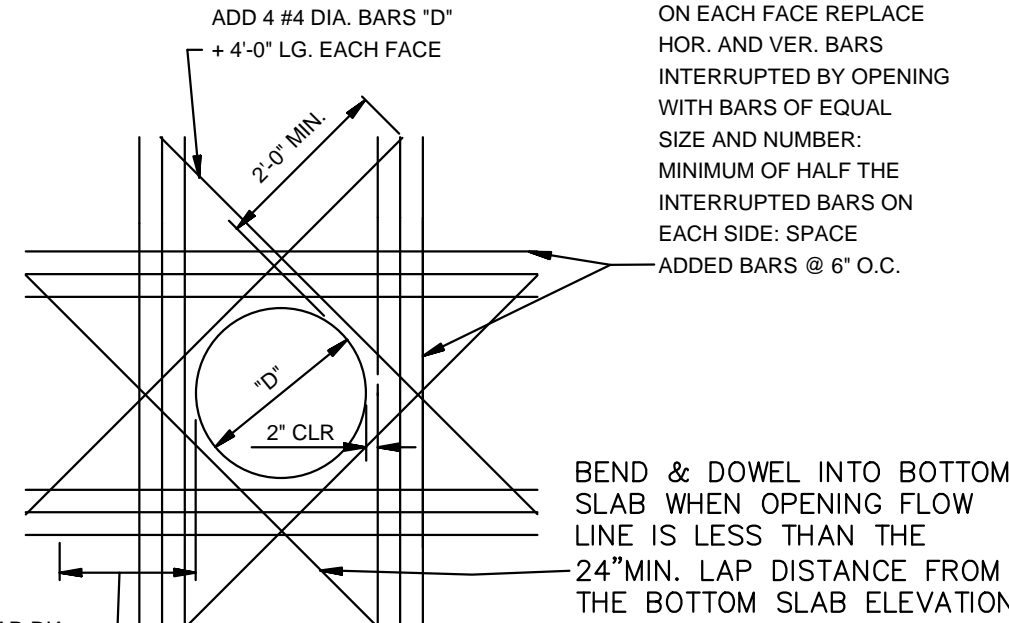
NOTE: CONTRACTION AND EXPANSION JOINTS SHALL BE CONSTRUCTED IN ACCORDANCE WITH THE PLANS AND SPECIFICATIONS.



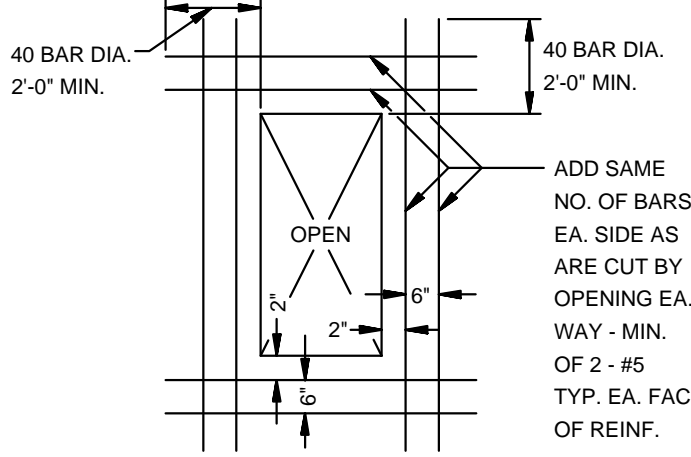
SECTION - CIRCULAR CURB INLET
N.T.S.



**CIRCULAR CURB INLET
W/ INLET EXTENSION**
N.T.S.



**ADDED REINFORCEMENT AT
ROUND OPENING IN WALL OR SLAB**
N.T.S.



**ADDED REINFORCEMENT AT
RECTANGULAR OPENING
IN WALL OR SLAB**
N.T.S.

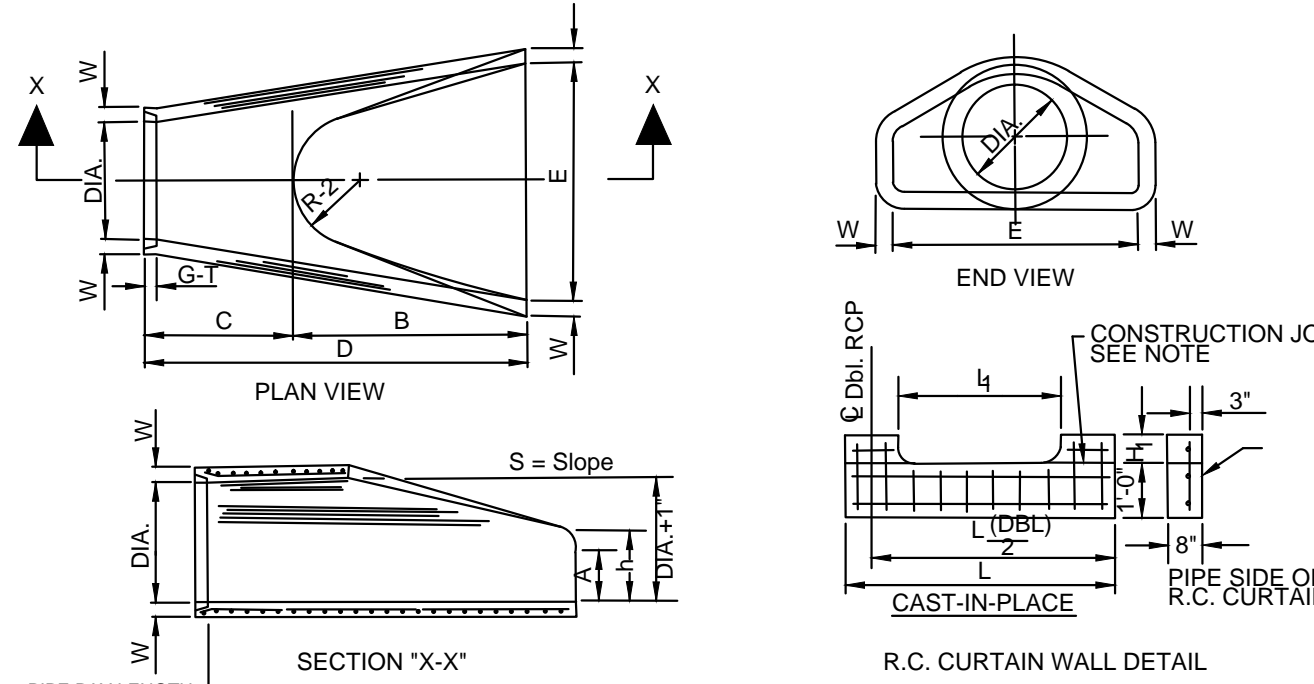
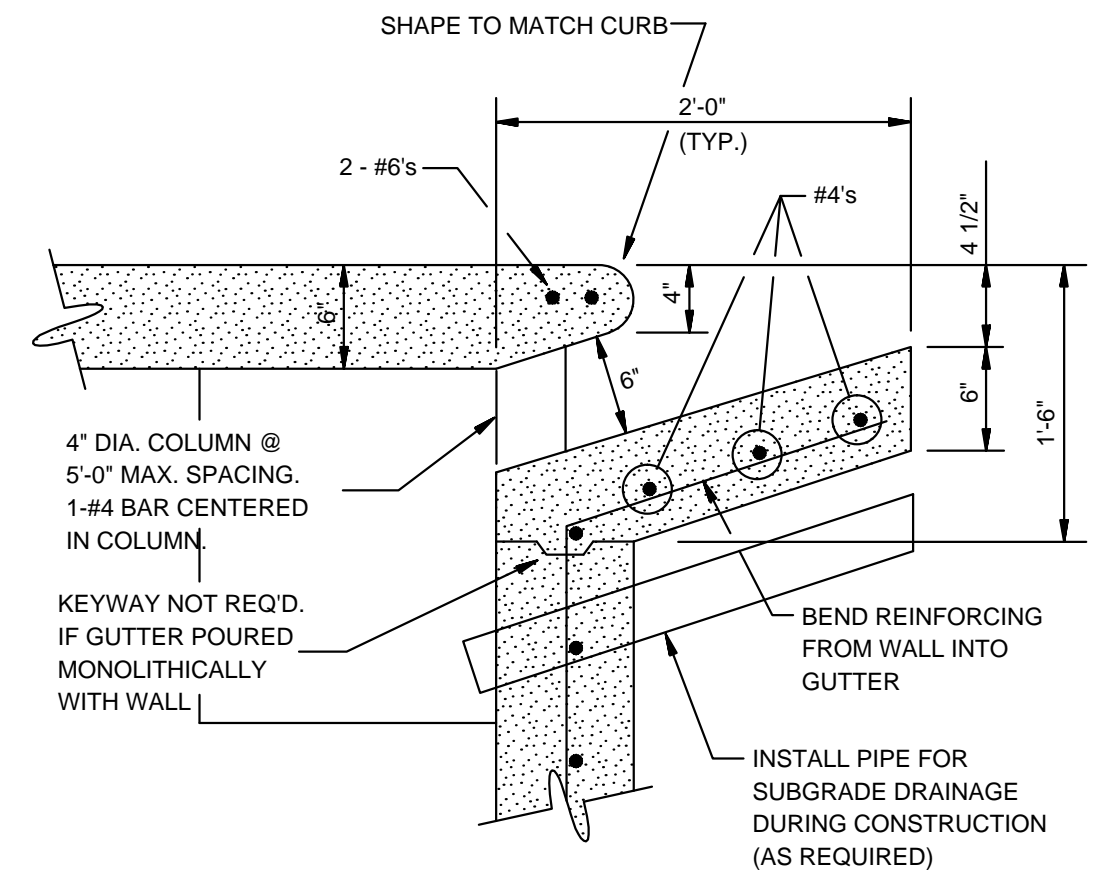


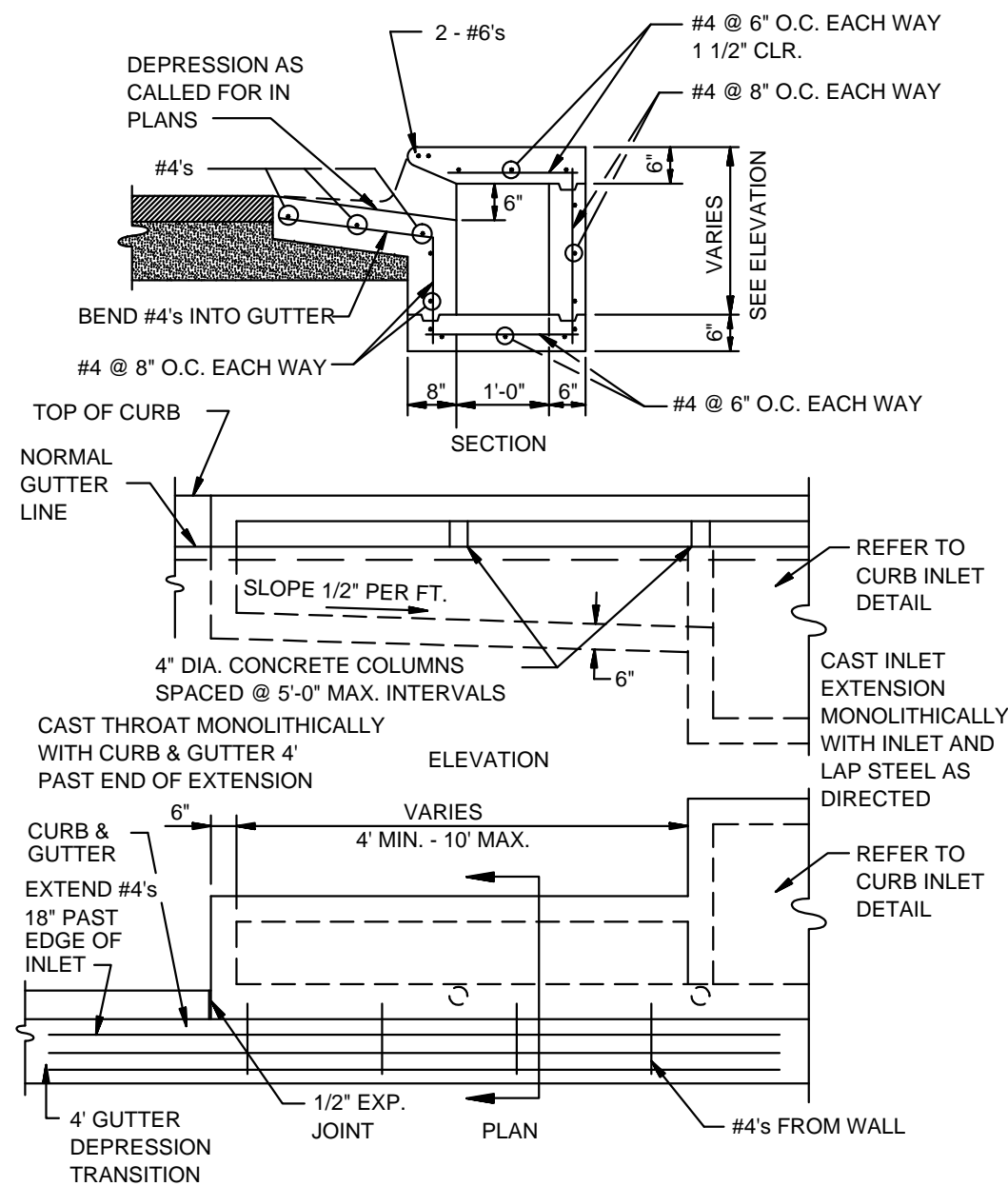
TABLE OF DIMENSIONS													
DIA. WALL	A	B	C	D	E	S	DIA. X 1"	P	R1	R2	G-1	WT	n
18"	2 1/2"	4"	2 1/2"	3 1/2"	6 1/2"	3 1/2"	18"	29"	15 1/2"	12"	2"	1000	1-1 1/2"
24"	3"	5 1/2"	3"	4"	8 1/2"	4"	24"	35 3/16"	18 1/2"	14"	2 1/2"	1600	1-1 1/2"
30"	3 1/2"	6 1/2"	3 1/2"	5 1/2"	10 1/2"	5 1/2"	30"	41 1/2"	21 1/2"	16"	3"	2000	1-1 1/2"
36"	4"	7 1/2"	4"	6 1/2"	12 1/2"	6 1/2"	36"	47 1/2"	24 1/2"	18"	3 1/2"	2400	1-1 1/2"
42"	4 1/2"	8 1/2"	4 1/2"	7 1/2"	14 1/2"	7 1/2"	42"	53 7/8"	27 1/2"	20"	4"	2800	2-2 1/2"
48"	5"	9 1/2"	5"	8 1/2"	16 1/2"	8 1/2"	48"	59 1/2"	30 1/2"	22"	4 1/2"	3200	2-2 1/2"
54"	5 1/2"	10 1/2"	5 1/2"	9 1/2"	18 1/2"	9 1/2"	54"	65 1/2"	33 1/2"	24"	5"	3600	2-2 1/2"
60"	6"	11 1/2"	6"	10 1/2"	20 1/2"	10 1/2"	60"	71 1/2"	36 1/2"	26"	5 1/2"	4000	2-2 1/2"
72"	7"	13 1/2"	7"	12 1/2"	24 1/2"	12 1/2"	72"	83 1/2"	42 1/2"	30"	6"	4800	4-6"

- NOTES:
- The portion of the R.C. Curtain Wall beneath the Flared End Section (Lower 1'-0") shall be placed monolithically. The Flared End Section shall then be set in place and the remaining portions of the R.C. Curtain Wall placed.
 - All reinforcing steel are #4 Bars at 6" O.C.
 - No separate payment will be made for the Curtain Walls. They shall be considered subsidiary to the Flared End Sections.
 - Tongue End On Upstream Section. Groove End On Downstream Section.

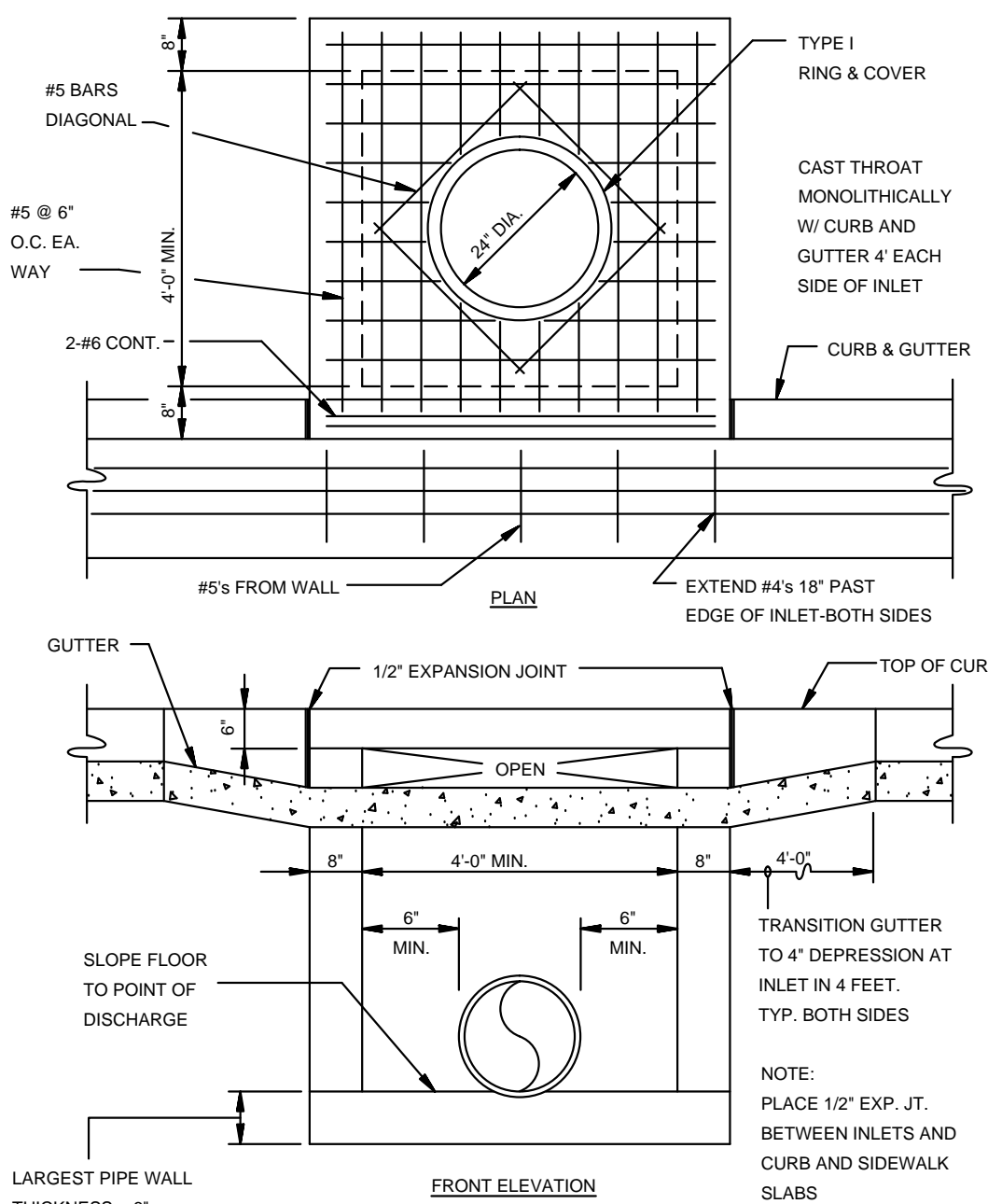
**FLARED END SECTION DETAIL FOR
REINFORCED CONCRETE PIPE CULVERT**
N.T.S.



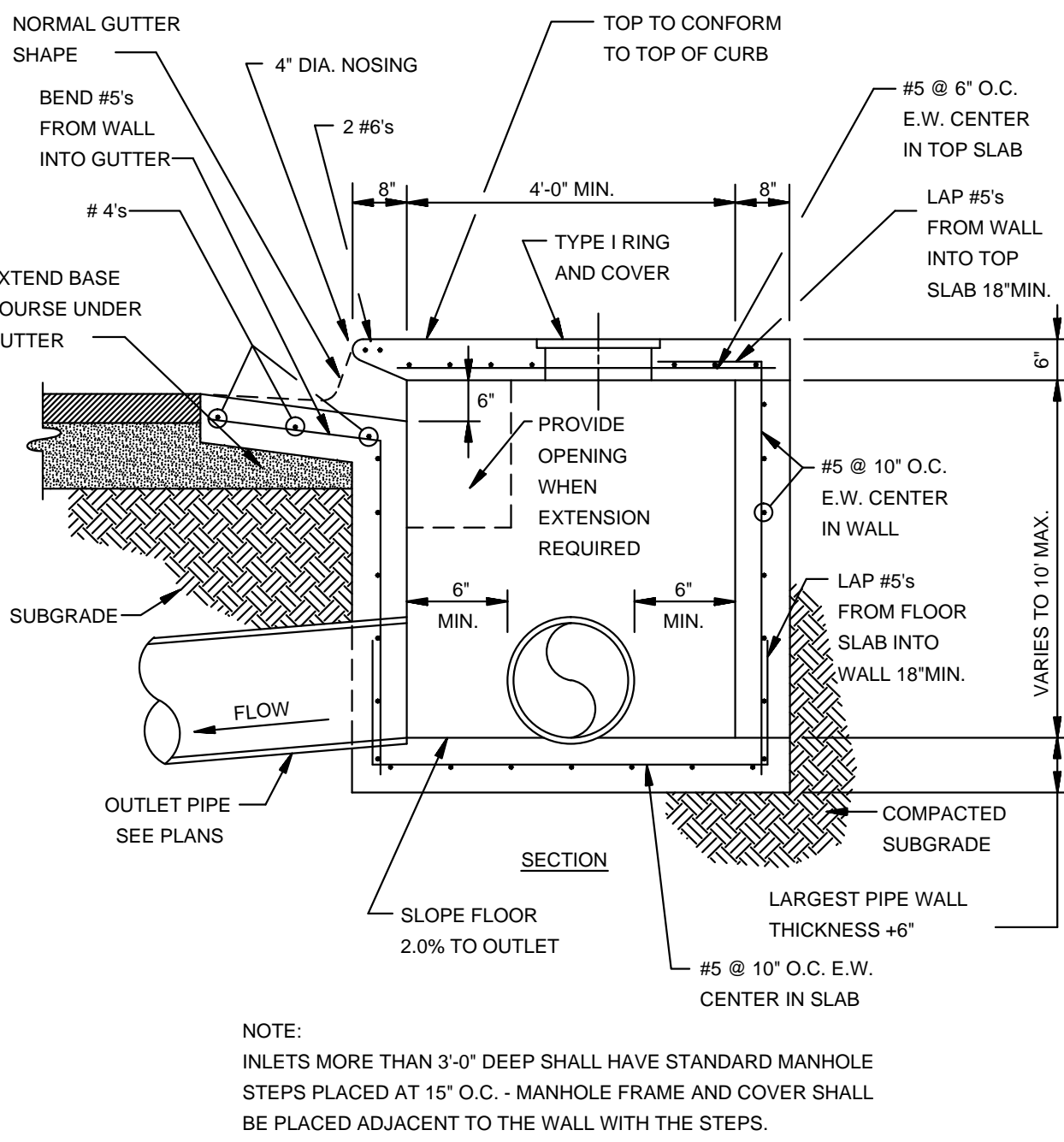
CURB OPENING
N.T.S.



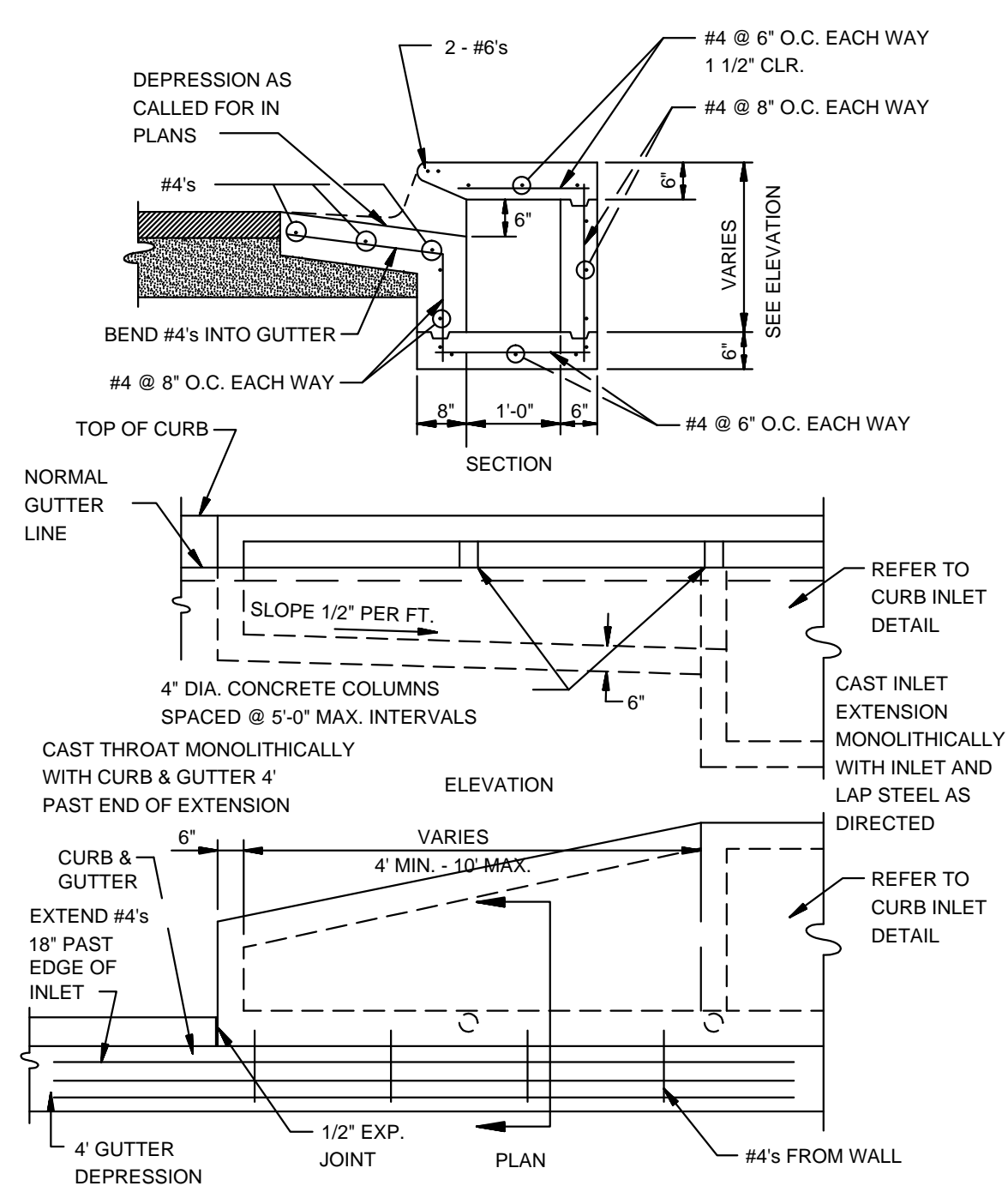
RECTANGULAR CURB INLET EXTENSION
N.T.S.



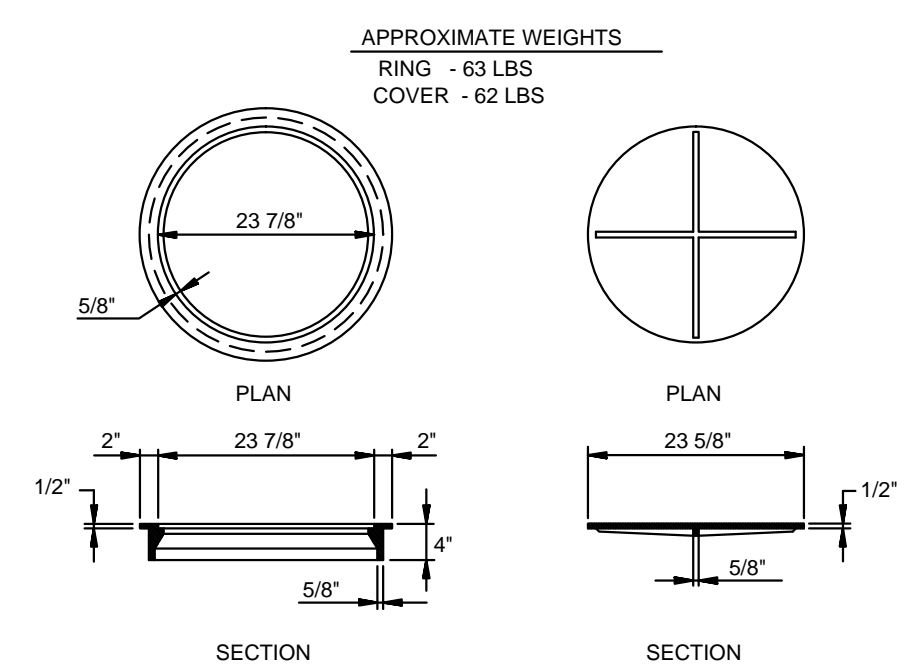
RECTANGULAR CURB INLET
N.T.S.



SECTION - TYPICAL CURB INLET - TYPE 'A'
N.T.S.

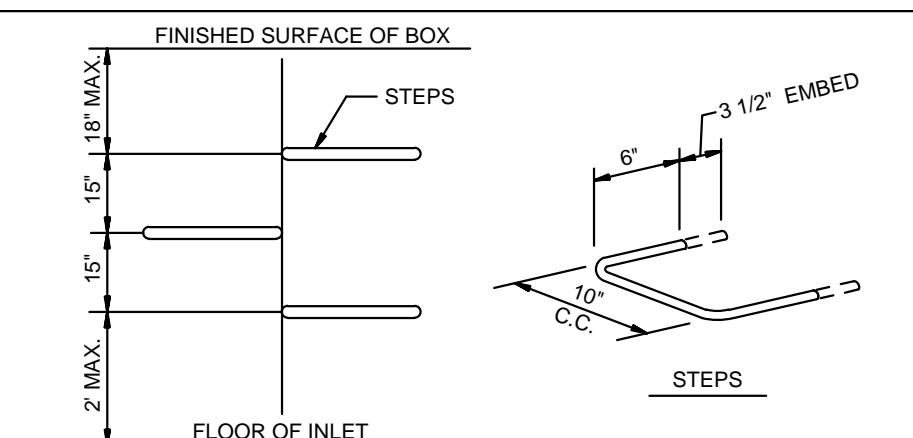


ALTERNATE CURB INLET EXTENSION
N.T.S.



TYPE I RING & COVER
N.T.S.

NOTE: TYPE I FRAME AND COVER PERMITTED ONLY ON STRUCTURES NOT SUBJECT TO VEHICULAR TRAFFIC.



MANHOLE / INLET STEPS
N.T.S.

- STEPS SPECIFICATIONS:
- MANHOLE STEPS: CORROSION RESISTANT, COATED AND REINFORCED WITH STEEL PER ASTM C-478. STEEL REINFORCING MINIMUM 1/2" DIAMETER.
 - CAPABLE OF SUPPORTING MINIMUM 300 LB. LOAD.
 - NON-SLIP TEXTURED TREADS
 - REQUIRED IN ALL STRUCTURES 3'-0" DEEP OR DEEPER, UNLESS SPECIFIED OTHERWISE.

DET-1



BARRINGTON PARK PHASE VIII

TYPICAL

STREET DETAILS

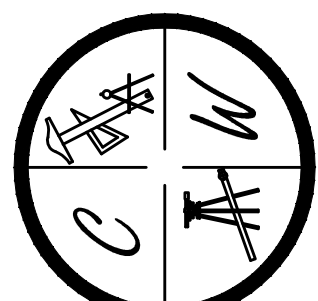
JONESBORO, AR

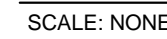
DATE: 10/30/15

REV:

DRAWN BY: BGV

CARLOS WOOD, P.E.
ENGINEERING CONSULTANT
148 CR 375
BONO, AR 72416
PHONE/FAX: (870) 972-8335
EMAIL: WOODENGR@SBGGLOBAL.NET
WEBSITE: WWW.WOODENGR.COM





NOTES:

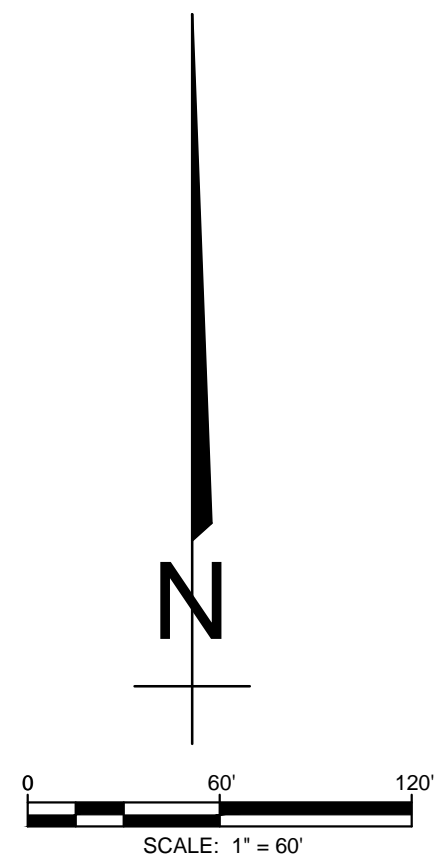
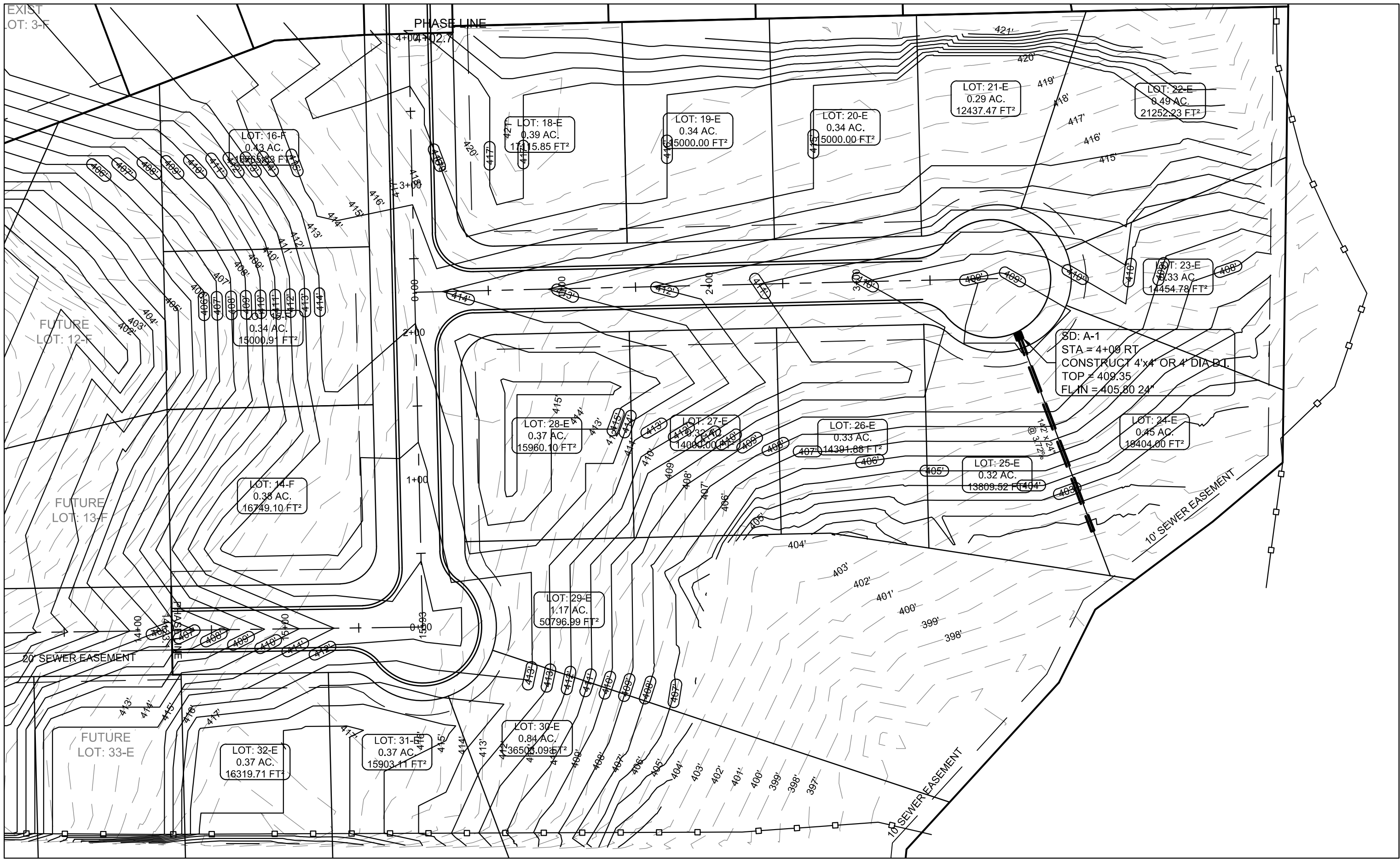
- SCALE: NONE

N.T.S.

1. AS

- N.T.S.

N.T.S.



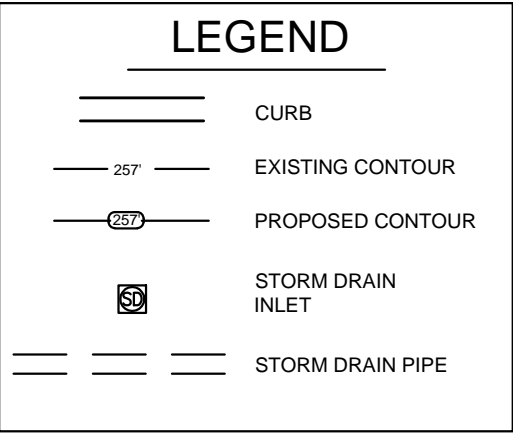
PIPE NOTE:

ALL PIPE SHALL MEET THE FOLLOWING STANDARDS.

- ALUMINIZED STEEL TYPE 2 STEEL PIPE
 - ASTM A-929
 - ASTM A-760
- RCP CLASS III OR CLASS IV
 - ASTM C-76
 - ASTM C-506
 - ASTM C-507

PROFILE SCALE:

HORIZONTAL: 1" = 50'
VERTICAL: 1" = 5'



STR-2

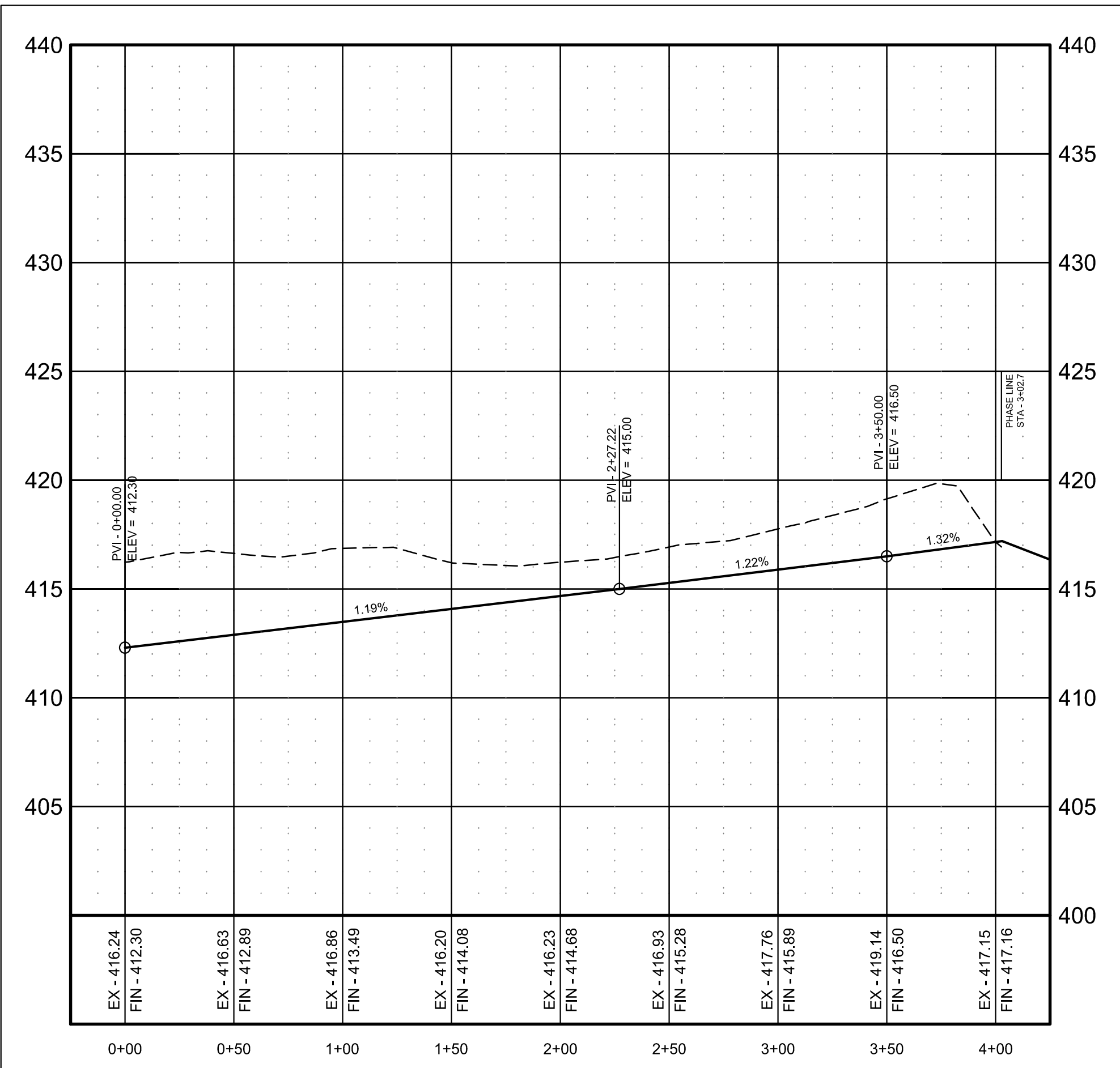
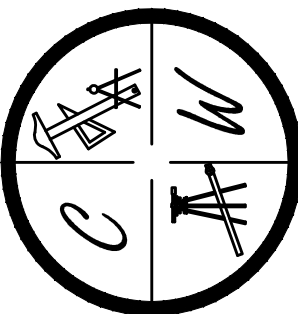


BARRINGTON PARK PHASE VIII

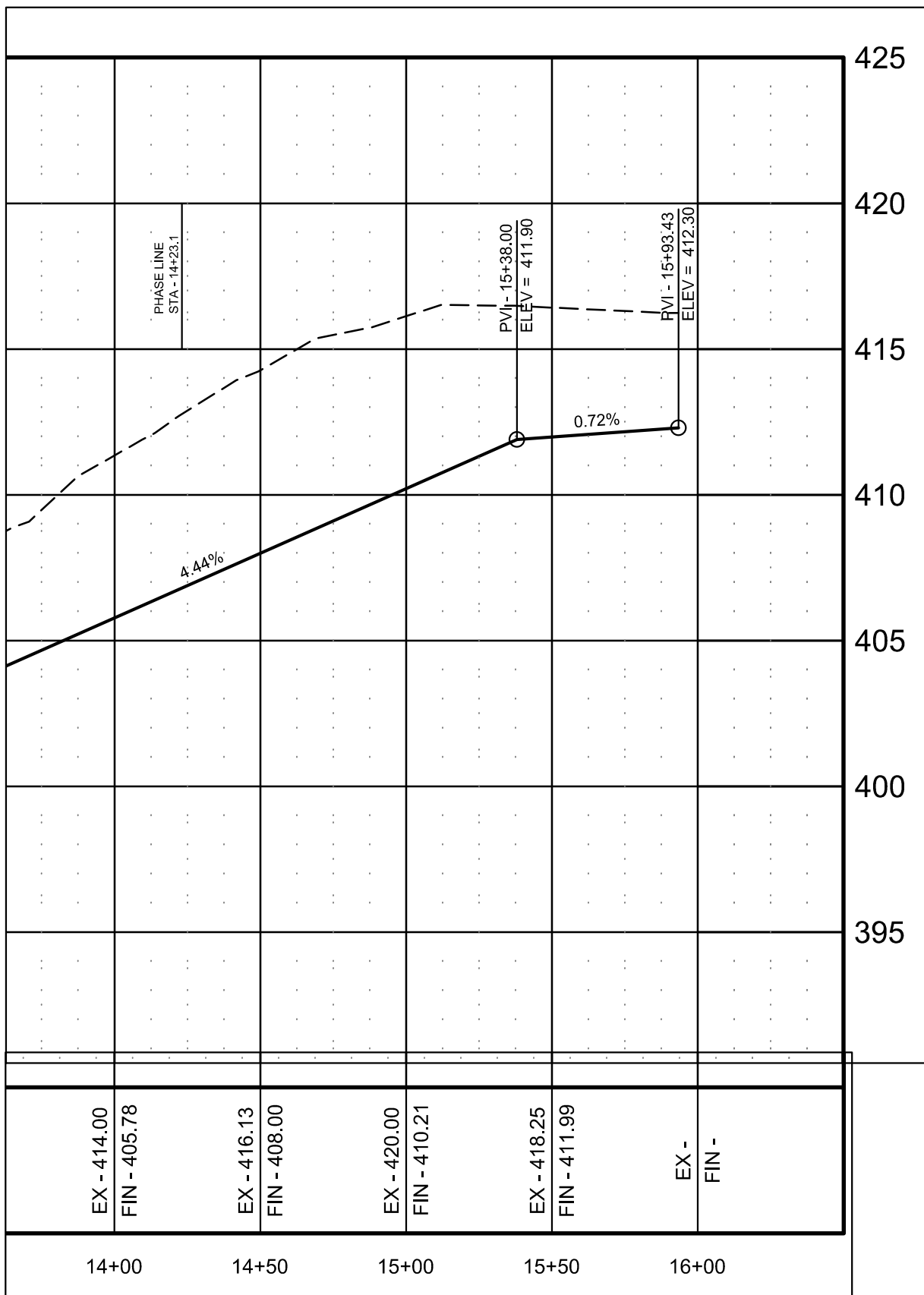
JONESBORO, AR
ANNADALE DR., FARMINGTON DR., & FARMINGTON CV.
PLAN & PROFILE

DATE: 10/30/15
REV:
DRAWN BY: BGW

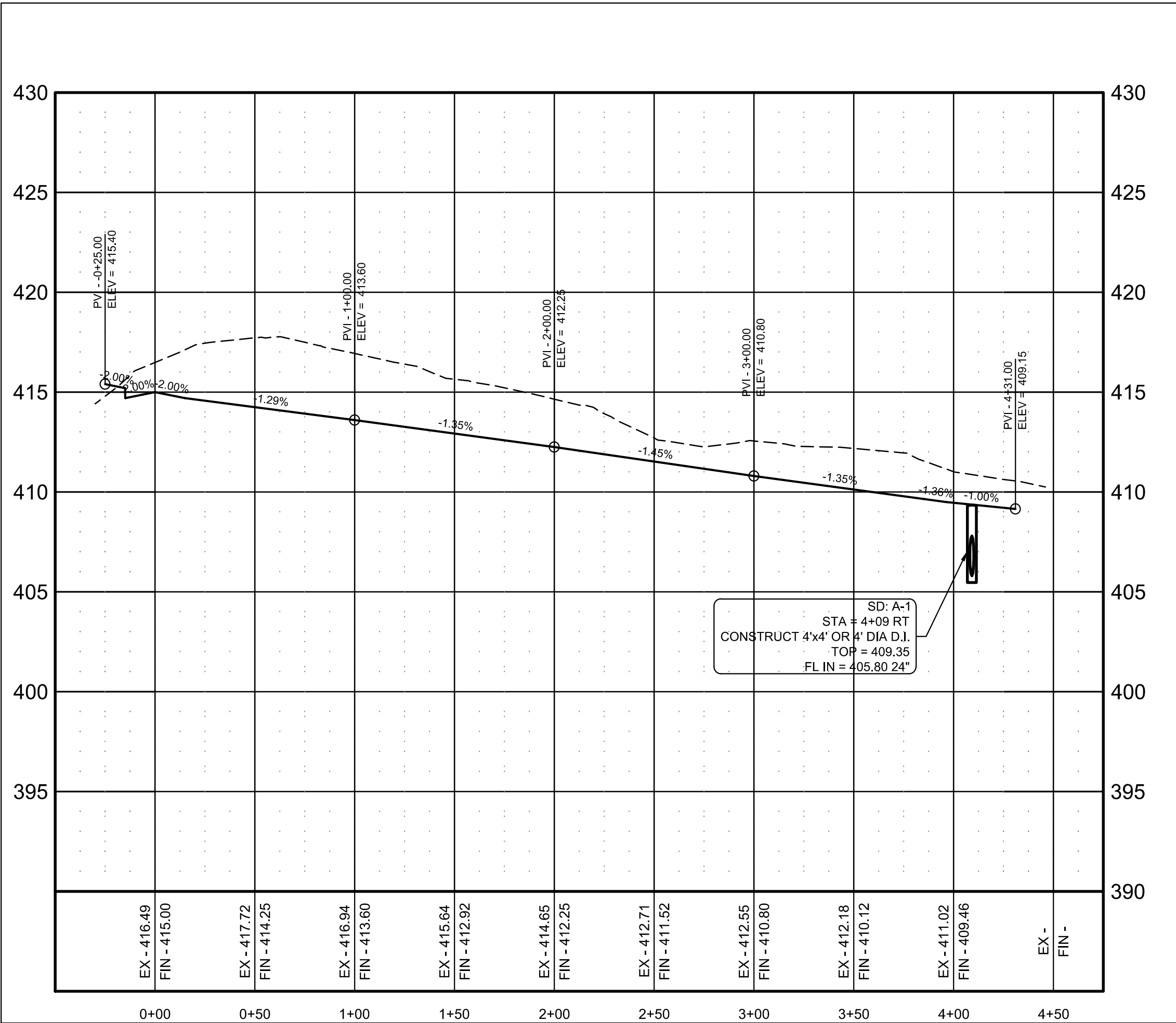
CARLOS WOOD, P.E.
ENGINEERING CONSULTANT
148 CR 375
BONO, AR 72416
PHONE/FAX: (870) 972-8335
EMAIL: WOODENR@SBOGLOBAL.NET
WEBSITE: WWW.WOODENR.COM



FARMINGTON DRIVE



ANNADALE DRIVE



FARMINGTON COVE