

Exhibit 1.

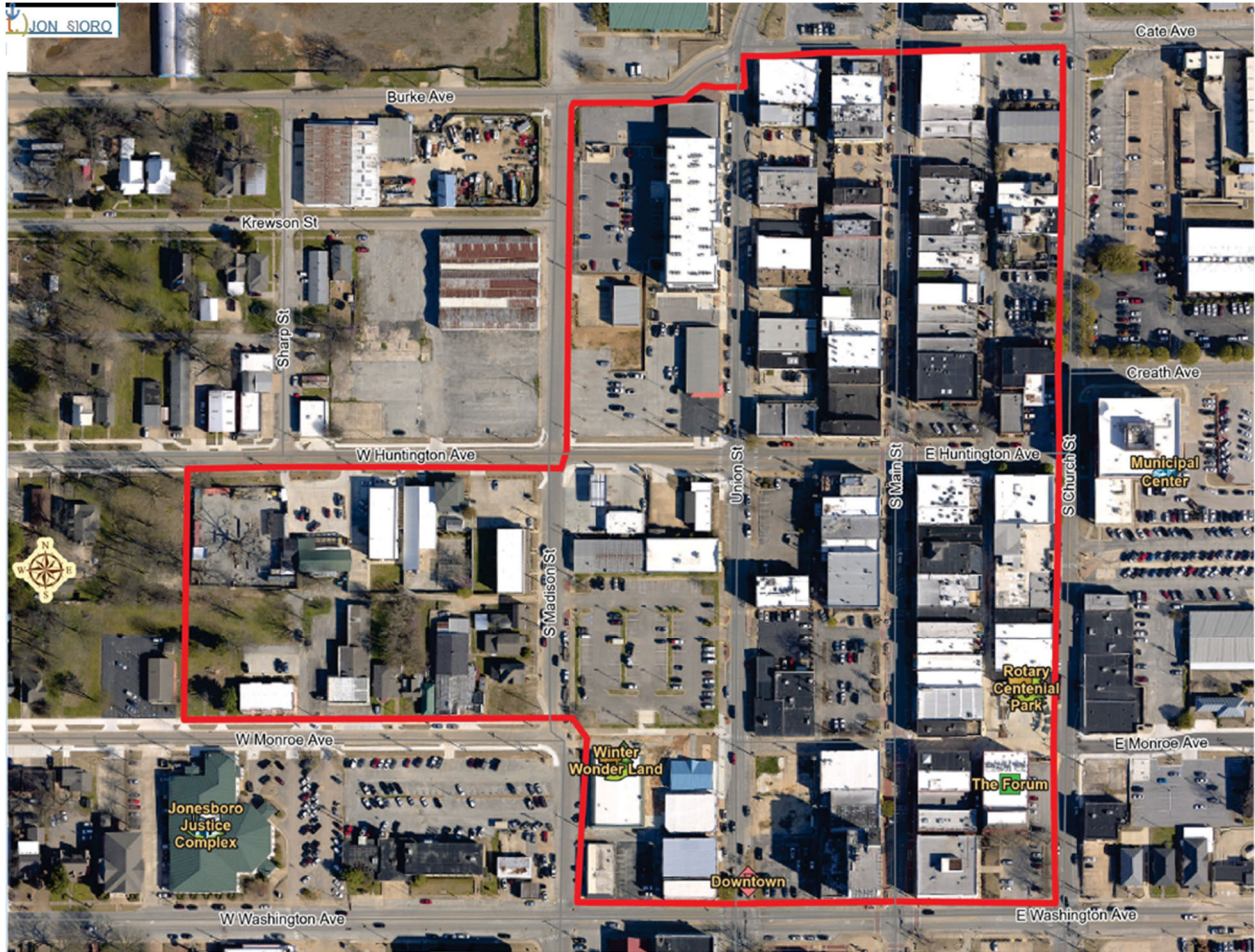


Exhibit 2. Legal Property Description of Designated Entertainment District

Beginning at the northwest corner of the intersection of E. WASHINGTON AVE and S. CHURCH ST, proceed north along the west curb line/sidewalk of CHURCH ST. to the southwest corner of CHURCH ST and BURKE AVE. Thence west along the south curb line/sidewalk on BURKE AVE until the southeast corner of the intersection of BURKE AVE and S. MADISON ST. Thence proceed south along the east curb line/sidewalk on S. MADISON ST until the southeast corner of the intersection of S. MADISON ST and W. HUNTINGTON AVE. Thence west along the south curb line/sidewalk for approximately 550 feet until the signage designating the end of the entertainment district boundary. Thence South in a straight line until you reach W. MONROE AVE. Thence east along the north curb line/sidewalk on W. MONROE AVE until the northeast corner of intersection of W. MONROE AVE and S. MADISON ST. Thence proceed south along the east curb line/sidewalk until the intersection of W. MADISON ST and E. WASHINGTON AVE. Thence east along the north curb line/sidewalk until the point of beginning at the northwest corner of the intersection of E. WASHINGTON AVE and S. UNION ST.

Exhibit 3.

Note: This is not the actual design of the Entertainment District logo, that logo will be designed by the Oversight Committee and approved by the city staff before printing occurs. This is just a sample for reference.

