



City of Jonesboro

Municipal Center
300 S. Church Street
Jonesboro, AR 72401

Meeting Agenda Public Services Council Committee

Tuesday, November 17, 2020

5:00 PM

Municipal Center, 300 S. Church

SPECIAL CALLED MEETING

1. Call To Order

2. Roll Call by City Clerk Donna Jackson

3. Approval of minutes

[MIN-20:091](#) Minutes for the Public Services Council Committee meeting on September 15, 2020.

Attachments: [MINUTES](#)

4. New Business

RESOLUTIONS TO BE INTRODUCED

[RES-20:225](#) A RESOLUTION TO ACCEPT THE DONATION OF PHILLIP EVANS COMMUNITY PARK FROM THE HABITAT FOR HUMANITY

Sponsors: Parks & Recreation and Mayor's Office

Attachments: [Habitat Park Donation](#)

5. Pending Items

6. Other Business

7. Public Comments

8. Adjournment



Legislation Details (With Text)

File #: MIN-20:091 **Version:** 1 **Name:** Minutes for the Public Services Council Committee meeting on September 15, 2020.
Type: Minutes **Status:** To Be Introduced
File created: 9/17/2020 **In control:** Public Services Council Committee
On agenda: **Final action:**
Title: Minutes for the Public Services Council Committee meeting on September 15, 2020.
Sponsors:
Indexes:
Code sections:
Attachments: [MINUTES](#)

Date	Ver.	Action By	Action	Result
------	------	-----------	--------	--------

Minutes for the Public Services Council Committee meeting on September 15, 2020.



City of Jonesboro

Municipal Center
300 S. Church Street
Jonesboro, AR 72401

Meeting Minutes Public Services Council Committee

Tuesday, September 15, 2020

4:30 PM

Municipal Center

ELECTION OF A CHAIR

A motion was made by Councilperson Ann Williams, seconded by Councilperson Joe Hafner, that this matter be Passed . The motion PASSED with the following vote.

Aye: 4 - Joe Hafner; Bobby Long; Charles Frierson and Ann Williams

Abstain: 1 - Chris Gibson

1. Call To Order

Present 5 - Joe Hafner; Bobby Long; Chris Gibson; Charles Frierson and Ann Williams

2. Roll Call by City Clerk Donna Jackson

Present 5 - Joe Hafner; Bobby Long; Chris Gibson; Charles Frierson and Ann Williams

3. Approval of minutes

Present 5 - Joe Hafner; Bobby Long; Chris Gibson; Charles Frierson and Ann Williams

[MIN-19:120](#)

MINUTES FOR THE PUBLIC SERVICES COMMITTEE MEETING ON DECEMBER 17, 2019

Attachments: [Public Services Minutes 12172019](#)

A motion was made by Chair Bobby Long, seconded by Councilperson Joe Hafner, that this matter be Passed . The motion PASSED with the following vote.

4. New Business

RESOLUTIONS TO BE INTRODUCED

[RES-20:140](#)

A RESOLUTION AUTHORIZING THE CITY OF JONESBORO, ARKANSAS AMEND THE JETS 2020 BUDGET FOR THE CARES ACT FUNDING

Sponsors: JETS and Grants

Attachments: [JETS Cares Act Funding 2020](#)

A motion was made by Councilperson Joe Hafner, seconded by Councilperson

Ann Williams, that this matter be Recommended to Council . The motion PASSED with the following vote.

Aye: 4 - Joe Hafner; Bobby Long; Charles Frierson and Ann Williams

5. Pending Items

6. Other Business

[COM-20:053](#)

PRESENTATION BY JETS DIRECTOR MICHAEL BLACK ON THE JETS CARES ACT FUNDING

Sponsors: JETS

Attachments: [JETS Cares Act Funding 2020 MB](#)

JETS Director, Michael Black gave an overview of the JETS 2020 CARES Act Proposed Funding Plan. Mr. Black explained that JETS started in May of 2006 and has experienced many growing pains. There are five fixed routes now. Three are on thirty minute loops, and two are on sixty minute loops. The service begins between 5:40 and 6:00 a.m., and ends at about 7:20 p.m., Monday through Friday. JETS does offer a Para-Transit system for those that are disabled who can't use a fixed route service. The total ridership for 2019 was 139,710, the current budget for 2020 is \$1.67 million, with a local match of \$180,000 from the city. We do have three Saturday routes, hours of operation is 9:00 a.m. to 4:00 p.m., and all three are on sixty minute loops, and adjustments were made to these routes due to the current COVID pandemic.

Two years ago we began a partnership with Arkansas State University to develop a bus app, and one year ago this past April it was launched. A person can bring up the app and see the routes and locate where a bus is. The app updates every fifteen seconds. We have taken this a bit further, you will find in all of our shelters, and the more popular stops that do not have shelters we have put two QR codes up where people can scan those with their phones, one QR code will lead them to the JETS web-site where they will see route maps, the other QR code will let them bring up the bus app and they can choose the route that they want to look at, and see where the bus is in relation to where they are.

In 2019 JETS commissioned a study through Alliance Transportation Group for a ten year transit development plan. We have implemented some of those plan study ideas by extending our hours, and began our Saturday routes. The study was done to identify methods to better serve both current and future passengers. This study is available on the JETS web-site. The projected ridership for 2020 was expected to be 122,305. There has been a drop of 25% in the ridership due to the COVID pandemic, we had to restructure the way passengers sit for social distancing purposes. We did see an increase in the para-transit system. In 2019 this time last year the ridership was 6,922, and today in 2020 it is 8,193. That is an increase of about 18%. The explanation for the increase in para-transit is because we are fare free because of COVID pandemic. We have constructed a compartment that will keep the driver isolated from the customers and will began charging fare again on October 5, 2020. By going fare free it did effect the revenue for 2020.

Currently 22% of our bus stops are sheltered. The cost per shelter ranges from \$3,500 to \$8,500. We do have a bid from a local vendor to build shelters, like the one that is located in front of the Earl Bell Community Center for the \$3,500 each as long as we

purchase ten or more. Councilmember Joe Hafner asked if those are covered shelters. JETS Director Michael Black said, yes. Mr. Black explained that there was some maintenance issues with the one located at the Earl Bell Center when it was first put in. The company had used a corrugated fiberglass on the backside of the shelter, and when grounds keeping crews were mowing and or weed eating debris from the equipment would break the fiberglass. We have since gone through and put sheets of Lexan and bolted it on the back side of the shelters and have not had any more issues.

Councilmember Chris Gibson asked if that was why we got away from those to begin with because of the maintenance. JETS Director Michael Black said, generally if we do not have a lot of vandalism, the maintenance is minimal on those. We had them up for eleven years before we ever went through and replaced any plexus glass.

Through the CARES ACT Funding Plan it is going to provide \$2,633,991, at 100% funding. This money can be used for operations, fixed assets, and capital improvements. On the regular 5307 grant we have thirty-six months that we can move money around between operations and capitol, after the thirty-six months is up whatever category that money is in it has to stay. With the CARES ACT Funding there is no deadline how soon we can spend it and we are able to move it with no deadlines. With this CARES ACT Funding it will save the city \$950,000.

Proposed equipment purchases with the CARES ACT Funding include replacement of two buses, one para-transit van, and replacement of four service vehicles, fare box, ten bus security cameras, facility security cameras, and an office printer. Capital improvements proposed spending consist of sidewalks, bust stop improvements, and new shelters.

Councilmember Joe Hafner asked how feasible would it be to have a route out to the industrial park. Director of JETS, Michael Black said that he has met with Nestle to see what their shifts consist of. Mr. Black said that he has also looked at ways to continue expanding the routes. I would like to take route 53 and make a thirty minute loop to the NEA Hospital, then take the other half of that route out to the industrial park past MLK Drive (Commerce).

Councilmember Chris Moore said that he has spoken with Councilmember Hafner regarding this. One of the things we are trying to decide right now is whether or not we want to require all of the incoming factories to have sidewalks or not, we are kind of in a quandary about it. We really need some advice from JETS. One of the things that we are looking at instead of making all of the factories have sidewalks is having an "in lieu of fee", and use that money instead for a central JETS stop among several of the factories out there. Having a couple of primary sidewalks, as opposed to having sidewalks just blanketing the area with no real destination. Mr. Black stated that he would be willing to work with the factories to develop safe stops for their employees, and for our customers. Councilmember Chris Moore said we may be asking you to evaluate a project like this, and give us some advice on in which direction we should go.

7. Public Comments

8. Adjournment

A motion was made by Councilperson Joe Hafner, seconded by Chair Bobby

Long, that this meeting be Adjourned . The motion PASSED with the following vote.

Aye: 4 - Joe Hafner; Bobby Long; Charles Frierson and Ann Williams



Legislation Details (With Text)

File #:	RES-20:225	Version:	1	Name:	
Type:	Resolution	Status:		To Be Introduced	
File created:	11/13/2020	In control:		Public Services Council Committee	
On agenda:		Final action:			
Title:	A RESOLUTION TO ACCEPT THE DONATION OF PHILLIP EVANS COMMUNITY PARK FROM THE HABITAT FOR HUMANITY				
Sponsors:	Parks & Recreation, Mayor's Office				
Indexes:	Other				
Code sections:					
Attachments:	Habitat Park Donation				

Date	Ver.	Action By	Action	Result
------	------	-----------	--------	--------

A RESOLUTION TO ACCEPT THE DONATION OF PHILLIP EVANS COMMUNITY PARK FROM THE HABITAT FOR HUMANITY

WHEREAS, the Habitat for Humanity (“Habitat”) owns the Phillip Evans Community Park located in the 200 block of State Street; and,

WHEREAS, Habitat is requesting the City of Jonesboro to accept the donation of the park in order to insure the maintenance of the park; and,

WHEREAS, the park would be used by the residents of Habitat’s new Evans Way Addition and other families in the area; and,

WHEREAS, the Building Facilities Committee met on August 26, 2020 to consider the donation, and voted to recommend it to the City Council.

NOW THEREFORE BE IT RESOLVED BY THE CITY COUNCIL FOR THE CITY OF JONESBORO, ARKANSAS THAT:

Section 1: The City of Jonesboro, Arkansas shall accept the donation of Phillip Evans Community Park from Habitat for Humanity.

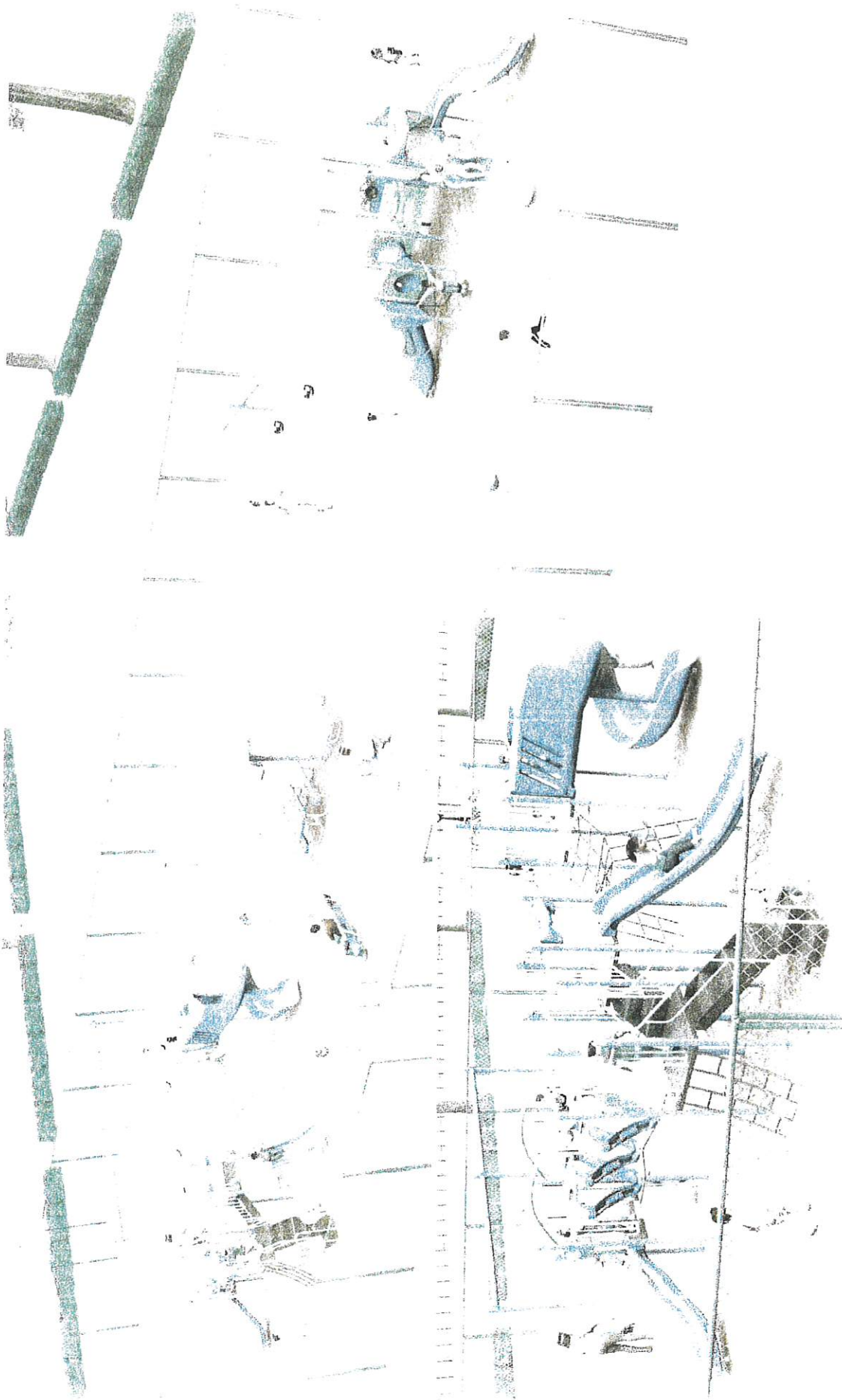
Section 2: The Mayor and City Clerk are hereby authorized by the City Council for the City of Jonesboro to execute all documents necessary to effectuate this action.



Build Up
FOR PHILLIP



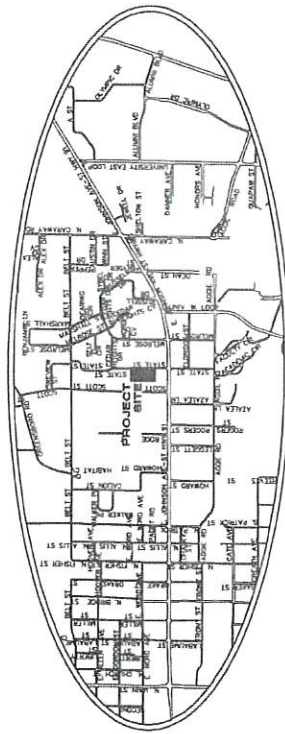
Habitat
for Humanity®
of Greater Jonesboro



EVANS WAY ADDITION

Jonesboro, Arkansas

June, 2019



Arkansas Department of Health
 1000 North College Avenue
 Little Rock, Arkansas 72202
 (501) 682-2200
 www.adh.state.ar.us

APPROVED FOR RECORDING
 JUL 23 2019
 CWL

APPROVED
 City Water & Light
 Board Meeting 7/16/19

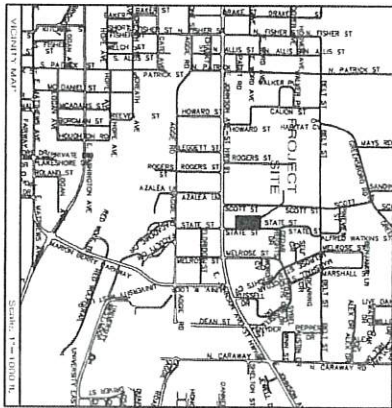
HABITAT FOR HUMANITY OF
 GREATER JONESBORO, INC.
 P.O. BOX 19051
 JONESBORO, ARKANSAS 72403
 RECEIVED
 AS Dept. of Health
 FFR 18 200

HABITAT FOR HUMANITY OF
 GREATER JONESBORO, INC.
 P.O. BOX 19051
 JONESBORO, ARKANSAS 72403
 (870) 931-4222

INDEX OF SHEETS

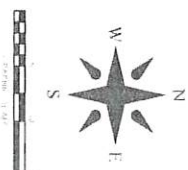
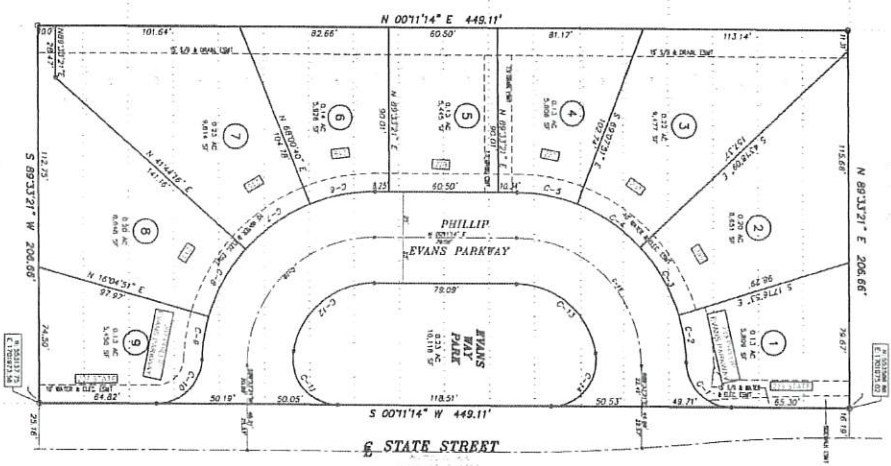
- COVER
- 1. RECORD PLAT
- 2. OVERALL UTILITY & DRAINAGE PLAN
- 3. WATER DISTRIBUTION PLAN
- 4. SANITARY SEWER PLAN
- 5. STREET PLAN & PROFILE
- 6. SOIL & EROSION CONTROL PLAN
- 7. WATER LINE CONSTRUCTION DETAILS
- 8. STREET & DRAINAGE CONSTRUCTION DETAILS

CIVILOGIC
 203 SOUTHWEST DRIVE
 JONESBORO, ARKANSAS 72401
 (870) 932-7880



LOT NO.	AREA (SQ. FT.)	AREA (SQ. YD.)	PERCENT OF TOTAL
1	1,123.27	0.08	0.08
2	1,123.27	0.08	0.08
3	1,123.27	0.08	0.08
4	1,123.27	0.08	0.08
5	1,123.27	0.08	0.08
6	1,123.27	0.08	0.08
7	1,123.27	0.08	0.08
8	1,123.27	0.08	0.08
9	1,123.27	0.08	0.08
10	1,123.27	0.08	0.08
11	1,123.27	0.08	0.08
12	1,123.27	0.08	0.08
13	1,123.27	0.08	0.08
14	1,123.27	0.08	0.08
15	1,123.27	0.08	0.08
16	1,123.27	0.08	0.08
17	1,123.27	0.08	0.08
18	1,123.27	0.08	0.08
19	1,123.27	0.08	0.08
20	1,123.27	0.08	0.08
21	1,123.27	0.08	0.08
22	1,123.27	0.08	0.08
23	1,123.27	0.08	0.08
24	1,123.27	0.08	0.08
25	1,123.27	0.08	0.08
26	1,123.27	0.08	0.08
27	1,123.27	0.08	0.08
28	1,123.27	0.08	0.08
29	1,123.27	0.08	0.08
30	1,123.27	0.08	0.08
31	1,123.27	0.08	0.08
32	1,123.27	0.08	0.08
33	1,123.27	0.08	0.08
34	1,123.27	0.08	0.08
35	1,123.27	0.08	0.08
36	1,123.27	0.08	0.08
37	1,123.27	0.08	0.08
38	1,123.27	0.08	0.08
39	1,123.27	0.08	0.08
40	1,123.27	0.08	0.08
41	1,123.27	0.08	0.08
42	1,123.27	0.08	0.08
43	1,123.27	0.08	0.08
44	1,123.27	0.08	0.08
45	1,123.27	0.08	0.08
46	1,123.27	0.08	0.08
47	1,123.27	0.08	0.08
48	1,123.27	0.08	0.08
49	1,123.27	0.08	0.08
50	1,123.27	0.08	0.08
51	1,123.27	0.08	0.08
52	1,123.27	0.08	0.08
53	1,123.27	0.08	0.08
54	1,123.27	0.08	0.08
55	1,123.27	0.08	0.08
56	1,123.27	0.08	0.08
57	1,123.27	0.08	0.08
58	1,123.27	0.08	0.08
59	1,123.27	0.08	0.08
60	1,123.27	0.08	0.08
61	1,123.27	0.08	0.08
62	1,123.27	0.08	0.08
63	1,123.27	0.08	0.08
64	1,123.27	0.08	0.08
65	1,123.27	0.08	0.08
66	1,123.27	0.08	0.08
67	1,123.27	0.08	0.08
68	1,123.27	0.08	0.08
69	1,123.27	0.08	0.08
70	1,123.27	0.08	0.08
71	1,123.27	0.08	0.08
72	1,123.27	0.08	0.08
73	1,123.27	0.08	0.08
74	1,123.27	0.08	0.08
75	1,123.27	0.08	0.08
76	1,123.27	0.08	0.08
77	1,123.27	0.08	0.08
78	1,123.27	0.08	0.08
79	1,123.27	0.08	0.08
80	1,123.27	0.08	0.08
81	1,123.27	0.08	0.08
82	1,123.27	0.08	0.08
83	1,123.27	0.08	0.08
84	1,123.27	0.08	0.08
85	1,123.27	0.08	0.08
86	1,123.27	0.08	0.08
87	1,123.27	0.08	0.08
88	1,123.27	0.08	0.08
89	1,123.27	0.08	0.08
90	1,123.27	0.08	0.08
91	1,123.27	0.08	0.08
92	1,123.27	0.08	0.08
93	1,123.27	0.08	0.08
94	1,123.27	0.08	0.08
95	1,123.27	0.08	0.08
96	1,123.27	0.08	0.08
97	1,123.27	0.08	0.08
98	1,123.27	0.08	0.08
99	1,123.27	0.08	0.08
100	1,123.27	0.08	0.08

- NOTES:
- 1) All bearings are based on Arkansas State Plane Coordinate system.
 - 2) The datum projection of the plat is in accordance with the 2011 NAD83 datum.
 - 3) Provided and our own research of the courthouse records.
 - 4) All bearings and distances are as shown, unless otherwise noted on the plat.
 - 5) Owner: Habitat for Humanity of Greater Jonesboro, Inc.
 - 6) Plat prepared by: Civilogic, Inc., 103 Southwest Dr., Jonesboro, AR 72403. This plat was prepared by Civilogic, Inc. on 08/27/2018. The field data is from a total station survey conducted on 08/27/2018. The field data is within 0.10 feet of the ground surface.
 - 7) Current Zoning: OS-1 (15' Front & rear setbacks, 7.5' side setbacks).



EVANS WAY ADDITION
 JONESBORO, ARKANSAS
 A REPLAT OF LOTS 143-160
 OF COLLEGE PLACE ADDITION

CERTIFICATE OF SURVEY

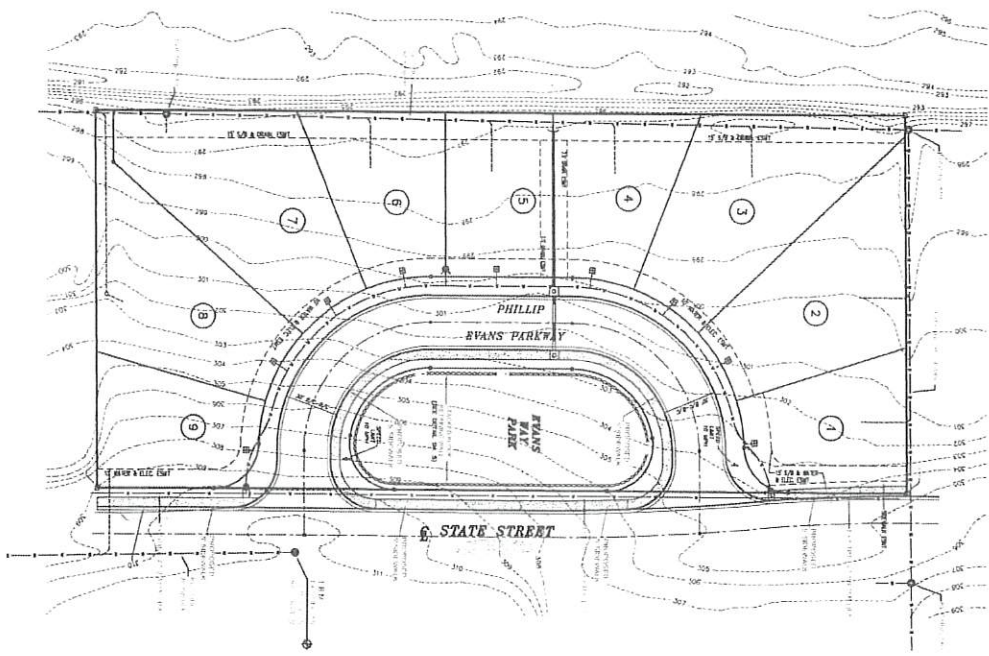
I, the undersigned, being duly sworn, depose and say that I am a duly licensed Professional Surveyor in the State of Arkansas, and that I am the author of the above described plat, and that the same was prepared by me or under my direct supervision and control, and that the same is a true and correct copy of the original plat as the same appears on the records of the County Clerk of the County of Craighead, Arkansas.

CERTIFICATE OF COMMENTARY

We hereby certify that we are the authors of the property shown and that the same was prepared by us or under our direct supervision and control, and that the same is a true and correct copy of the original plat as the same appears on the records of the County Clerk of the County of Craighead, Arkansas.

Habitat for Humanity of Greater Jonesboro, Inc.
 Michael Johnson
 Michael Johnson

		<p>RECORD PLAT EVANS WAY ADDITION JONESBORO, ARKANSAS FOR HABITAT FOR HUMANITY OF GREATER JONESBORO, INC.</p>	ENGINEERS PLANNERS SURVEYORS	Date: 08-18-18 Scale: 1"=30' Sheet: 17 of 19	Job No.: 117070 County: CRAIGHEAD Range: 04E Township: 14N District: RE	Checked by: GH Date: 08/27/2018	Sheet No.: 1 of 9
						103 Southwest Dr., Jonesboro, AR (670)932-7850 - www.civilogic.net © 2018, Civilogic	



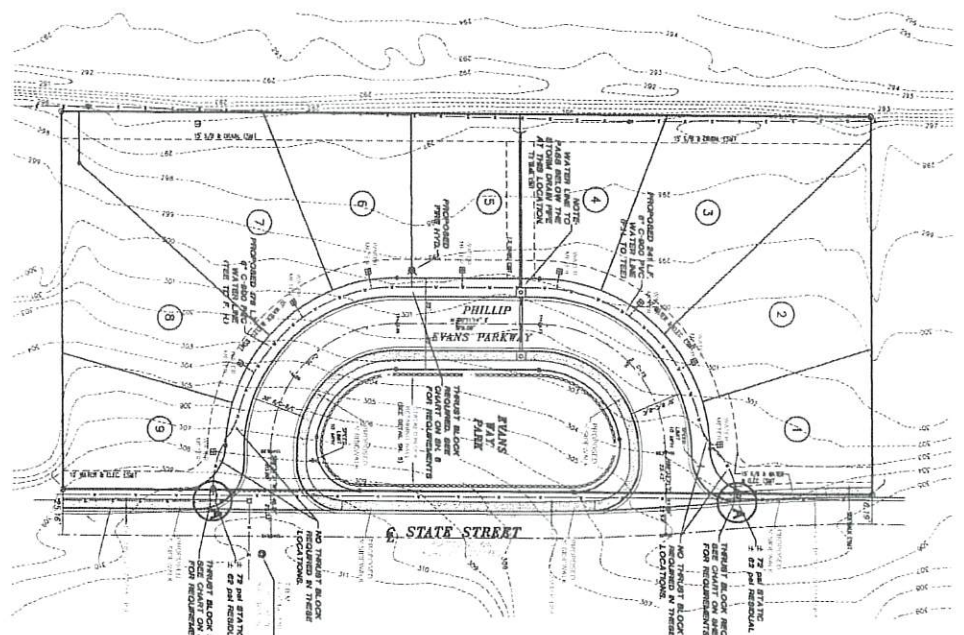
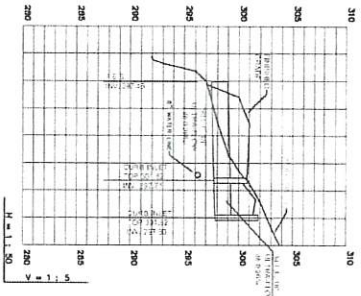
2 of 9



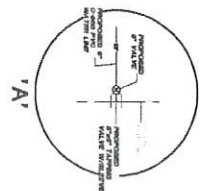
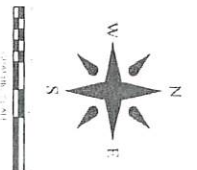
OVERALL DRAINAGE & UTILITY PLAN
 EVANS WAY ADDITION
 JONESBORO, ARKANSAS
 FOR
 HABITAT FOR HUMANITY OF GREATER JONESBORO, INC.

ENGINEERS	PLANNERS	REVISED 2-6-2020; PER ADN COMMENTS			
SURVEYORS		Date	Scale	Job No.	Sheet
		08-18-19	1"=30'	117270	2 of 9
		Section	Township	Range	County
		17	14N	04E	CRAIGHEAD
		Drawn By:	Checked by:		
		RE	GH		
<small>NOT VALID FOR ANY OTHER PROJECTS AND WITHOUT WRITTEN CONSENT</small> <small>© 2019, Civilogic</small>					

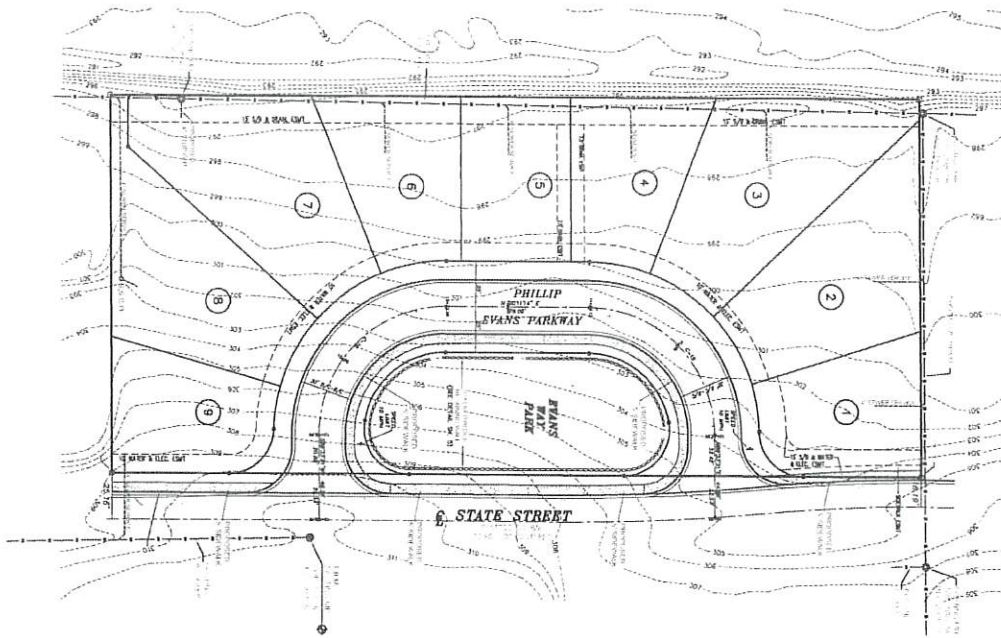
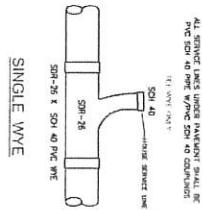
203 Southwest Dr., Jonesboro, AR (870)312-7650 www.civilogic.net



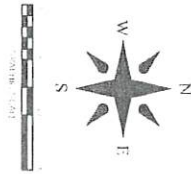
- NOTES:
- 1) TOTAL C-900 WATER LINE 417 FEET.
 - 2) ALL 9 NEW VALVES ARE TO BE 3'-6" METERS.
 - 3) WATER AND ELECTRIC TO BE INSTALLED TOGETHER.
 - 4) INSURER'S JUNCTION BOX OR PULL BOX SHALL BE PLACED OVER THE HYDRANTS WITHOUT CITY WATER AND LIGHT APPROVAL.
 - 5) CITY WATER AND LIGHT IS NOT RESPONSIBLE FOR ANY WATER OR SHOWER TRENCH SETTLEMENT BEFORE, DURING, OR AFTER WARRANTY PERIOD.
 - 6) THE DEVELOPER AND ENGINEER ARE RESPONSIBLE FOR ANY CONFLICTS THAT REQUIRE PLASTIC BOXES TO BE EXCHANGED FOR CONCRETE BOXES. THIS SHALL BE AT THE DEVELOPERS OR ENGINEERS EXPENSE.
 - 7) IF UNSAFE PRACTICES ARE DISCOVERED BY CIVIL ENGINEER, THE ENGINEER SHALL NOTIFY THE OSMA. THIS SHALL BE AT THE DEVELOPERS OR ENGINEERS RESPONSIBILITY.
 - 8) DURING OUR INSPECTIONS OF WORKMANSHIP AND MATERIALS, WE WILL NOTIFY THE OSMA. THIS SHALL BE AT THE DEVELOPERS OR ENGINEERS EXPENSE.
 - 9) DURING CONSTRUCTION, WORK SHALL BE INSPECTED BY THE DEVELOPERS OR ENGINEERS. THE RESPONSIBILITY OF THE CONTRACTORS SAFETY PRACTICES, TO LOCATE WIRE AND LOCATE MARKERS REQUIRED WHEN WATER AND ELECTRIC ARE NOT A COMBINED INSTALLATION.



		WATER DISTRIBUTION PLAN EVANS WAY ADDITION JONESBORO, ARKANSAS FOR HABITAT FOR HUMANITY OF GREATER JONESBORO, INC		ENGINEERS Civilogic <small>203 Southwest Dr., Jonesboro, AR - (870)932-7680 - www.civilogic.net</small>	PLANNERS SURVEYORS	REVISED 2-6-2020: PER ADH COMMENTS Date: 06-18-19 Scale: 1"=30' Elevation: 17 Town/Map: IAN Drawn By: RE Checked by: GH	Job No: 117070 County: CRAIGHEAD 3 of 9	Sheet No: 3 of 9
		SELF SERVICE: THIS PLAN IS NOT VALID UNLESS APPROVED AND SIGNED BY THE ENGINEER OR SURVEYOR.						



NOTE:
EACH LOT MUST PAY C.W.I.
SEWER TAP CHARGE AND
INSPECTION/CONNECTION FEE.

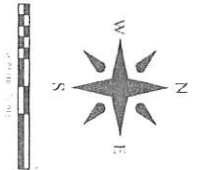
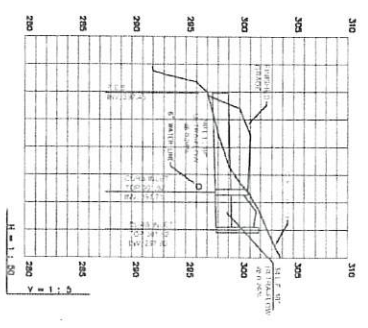
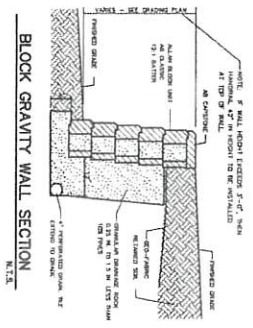
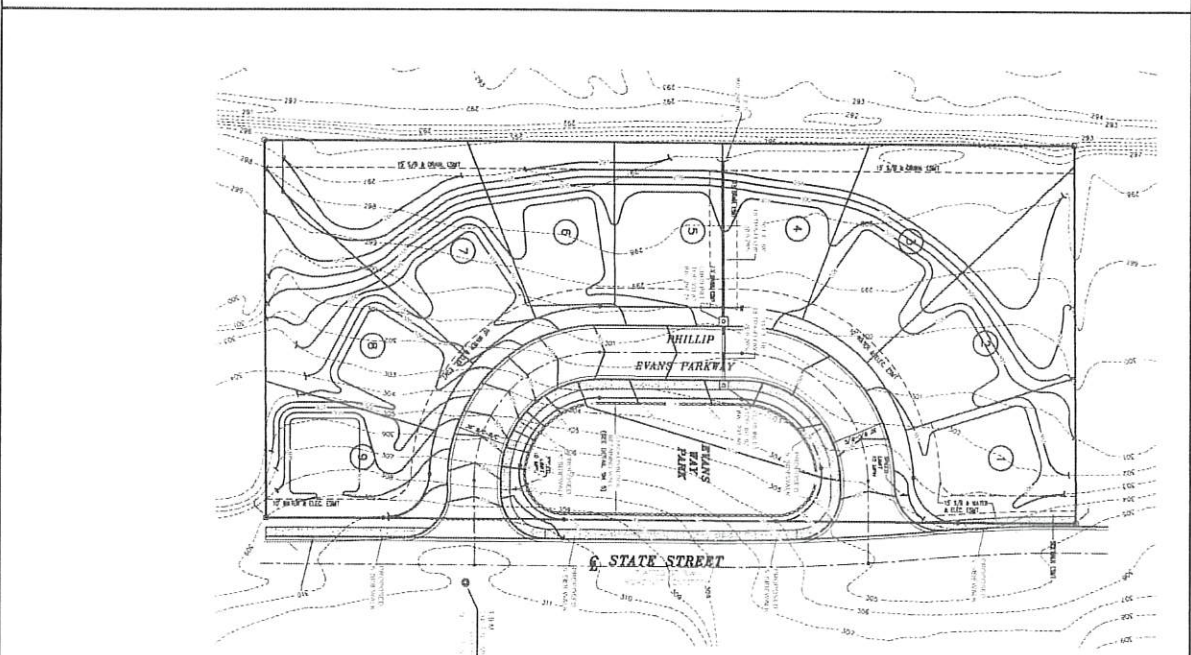
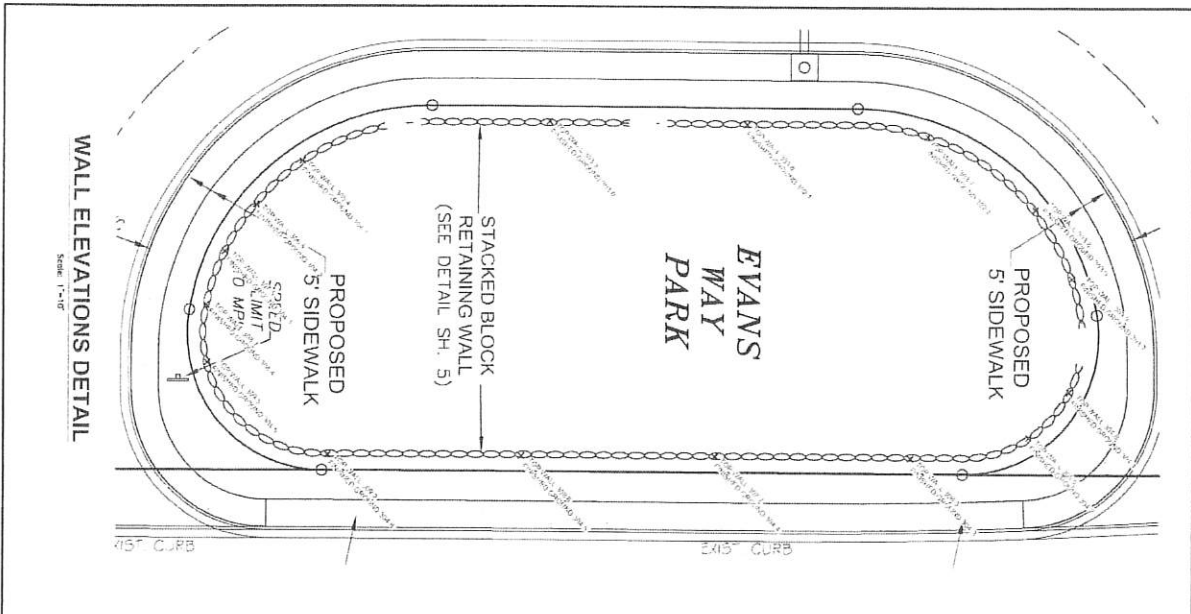


4 of 9



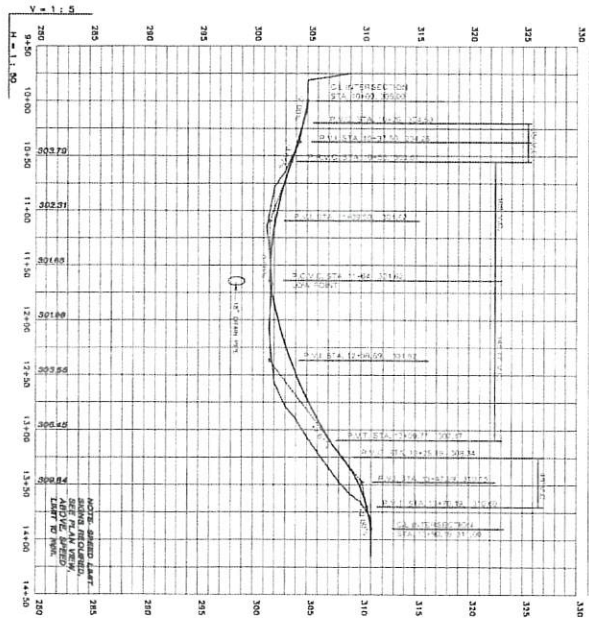
SANITARY SEWER SERVICES PLAN
EVANS WAY ADDITION
JONESBORO ARKANSAS
FOR
HABITAT FOR HUMANITY OF GREATER JONESBORO, INC

ENGINEERS	PLANNERS	SURVEYORS	Date 06-18-19	Scale 1"=30'	Job No. 117070	Sheet No.
Civilogic			Section 17	Township 14N	Range 04E	County CRAIGHEAD
			Drawn by RC	Checked by GH	4 of 9	
203 Southwest Dr. - Jonesboro, AR - (670)632-7860 - www.civilogic.net						

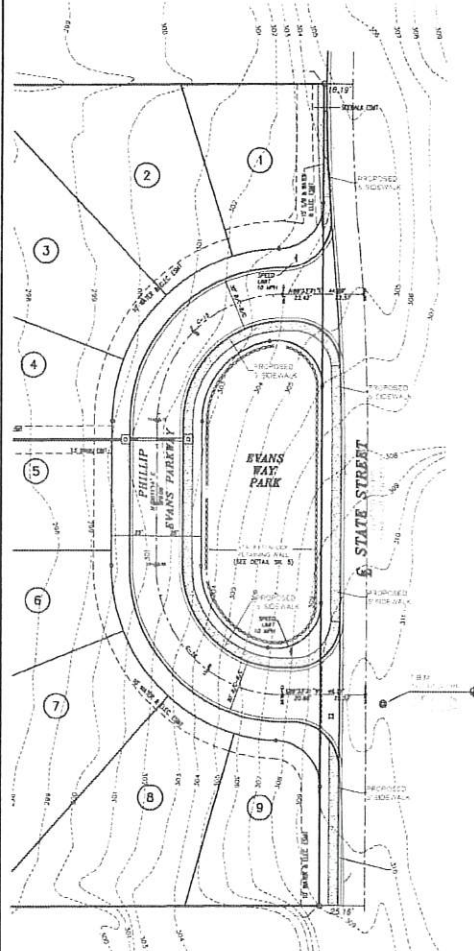


		DRAINAGE PLAN EVANS WAY ADDITION JONESBORO, ARKANSAS FOR HABITAT FOR HUMANITY OF GREATER JONESBORO, INC.		ENGINEERS Civilogic	PLANNERS SURVEYORS	REVISED 2-5-2020: WALL ELEVATIONS ADDED Date: 06-18-19 Scale: 1"=30' Section: 17 Township: 14N Range: 04E County: CRAIGHEAD Drawn By: RE Checked by: GH <small>THIS DRAWING IS THE PROPERTY OF CIVILOGIC AND SHALL REMAIN THE PROPERTY OF CIVILOGIC.</small>	Sheet No. 5 of 9
		2020 REG. #17709 DAVID R. REED ENGINEER STATE OF ARKANSAS				2020 REG. #17709 DAVID R. REED ENGINEER STATE OF ARKANSAS	

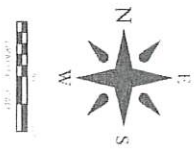
STATION	ELEVATION	FINISH	PROPOSED	EXISTING
1+00	298.00	298.00	298.00	298.00
1+10	298.00	298.00	298.00	298.00
1+20	298.00	298.00	298.00	298.00
1+30	298.00	298.00	298.00	298.00
1+40	298.00	298.00	298.00	298.00
1+50	298.00	298.00	298.00	298.00
1+60	298.00	298.00	298.00	298.00
1+70	298.00	298.00	298.00	298.00
1+80	298.00	298.00	298.00	298.00
1+90	298.00	298.00	298.00	298.00
2+00	298.00	298.00	298.00	298.00
2+10	298.00	298.00	298.00	298.00
2+20	298.00	298.00	298.00	298.00
2+30	298.00	298.00	298.00	298.00
2+40	298.00	298.00	298.00	298.00
2+50	298.00	298.00	298.00	298.00
2+60	298.00	298.00	298.00	298.00
2+70	298.00	298.00	298.00	298.00
2+80	298.00	298.00	298.00	298.00
2+90	298.00	298.00	298.00	298.00
3+00	298.00	298.00	298.00	298.00
3+10	298.00	298.00	298.00	298.00
3+20	298.00	298.00	298.00	298.00
3+30	298.00	298.00	298.00	298.00
3+40	298.00	298.00	298.00	298.00
3+50	298.00	298.00	298.00	298.00
3+60	298.00	298.00	298.00	298.00
3+70	298.00	298.00	298.00	298.00
3+80	298.00	298.00	298.00	298.00
3+90	298.00	298.00	298.00	298.00
4+00	298.00	298.00	298.00	298.00
4+10	298.00	298.00	298.00	298.00
4+20	298.00	298.00	298.00	298.00
4+30	298.00	298.00	298.00	298.00
4+40	298.00	298.00	298.00	298.00
4+50	298.00	298.00	298.00	298.00
4+60	298.00	298.00	298.00	298.00
4+70	298.00	298.00	298.00	298.00
4+80	298.00	298.00	298.00	298.00
4+90	298.00	298.00	298.00	298.00
5+00	298.00	298.00	298.00	298.00
5+10	298.00	298.00	298.00	298.00
5+20	298.00	298.00	298.00	298.00
5+30	298.00	298.00	298.00	298.00
5+40	298.00	298.00	298.00	298.00
5+50	298.00	298.00	298.00	298.00
5+60	298.00	298.00	298.00	298.00
5+70	298.00	298.00	298.00	298.00
5+80	298.00	298.00	298.00	298.00
5+90	298.00	298.00	298.00	298.00
6+00	298.00	298.00	298.00	298.00
6+10	298.00	298.00	298.00	298.00
6+20	298.00	298.00	298.00	298.00
6+30	298.00	298.00	298.00	298.00
6+40	298.00	298.00	298.00	298.00
6+50	298.00	298.00	298.00	298.00
6+60	298.00	298.00	298.00	298.00
6+70	298.00	298.00	298.00	298.00
6+80	298.00	298.00	298.00	298.00
6+90	298.00	298.00	298.00	298.00
7+00	298.00	298.00	298.00	298.00
7+10	298.00	298.00	298.00	298.00
7+20	298.00	298.00	298.00	298.00
7+30	298.00	298.00	298.00	298.00
7+40	298.00	298.00	298.00	298.00
7+50	298.00	298.00	298.00	298.00
7+60	298.00	298.00	298.00	298.00
7+70	298.00	298.00	298.00	298.00
7+80	298.00	298.00	298.00	298.00
7+90	298.00	298.00	298.00	298.00
8+00	298.00	298.00	298.00	298.00
8+10	298.00	298.00	298.00	298.00
8+20	298.00	298.00	298.00	298.00
8+30	298.00	298.00	298.00	298.00
8+40	298.00	298.00	298.00	298.00
8+50	298.00	298.00	298.00	298.00
8+60	298.00	298.00	298.00	298.00
8+70	298.00	298.00	298.00	298.00
8+80	298.00	298.00	298.00	298.00
8+90	298.00	298.00	298.00	298.00
9+00	298.00	298.00	298.00	298.00
9+10	298.00	298.00	298.00	298.00
9+20	298.00	298.00	298.00	298.00
9+30	298.00	298.00	298.00	298.00
9+40	298.00	298.00	298.00	298.00
9+50	298.00	298.00	298.00	298.00
9+60	298.00	298.00	298.00	298.00
9+70	298.00	298.00	298.00	298.00
9+80	298.00	298.00	298.00	298.00
9+90	298.00	298.00	298.00	298.00
10+00	298.00	298.00	298.00	298.00



PROFILE -
PHILLIP EVANS
PARKWAY



PLAN VIEW -
PHILLIP
EVANS PARKWAY

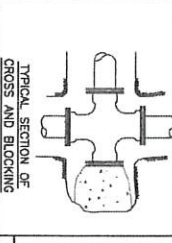
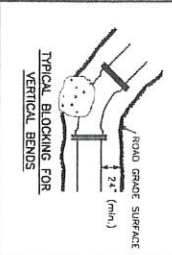
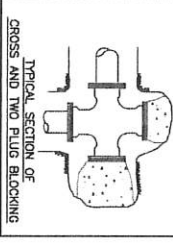
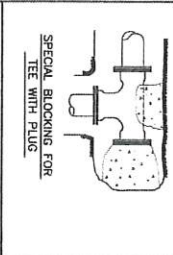
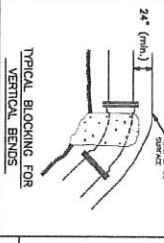
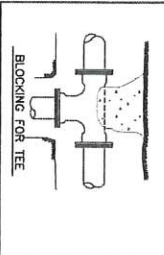
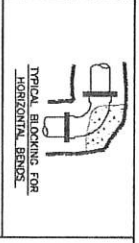
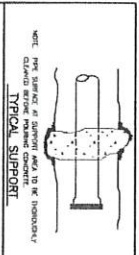


6 of 9



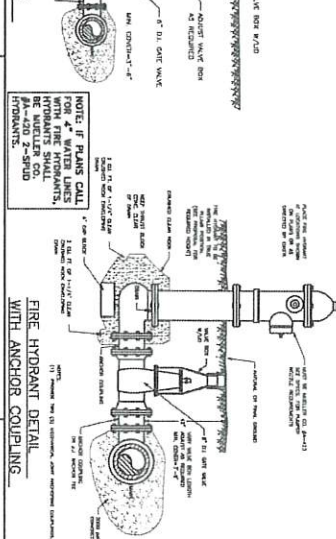
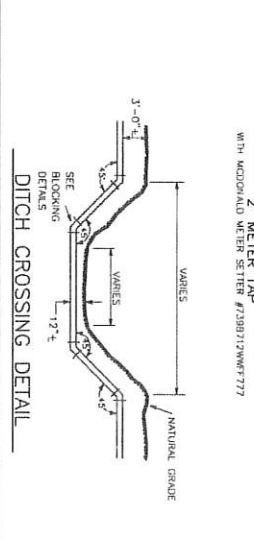
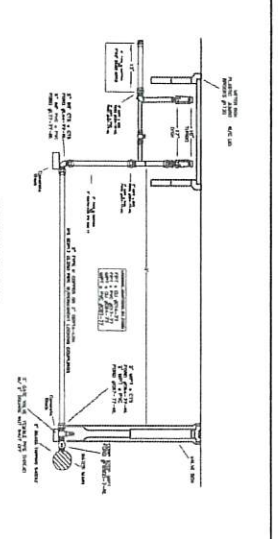
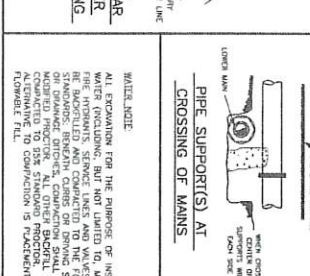
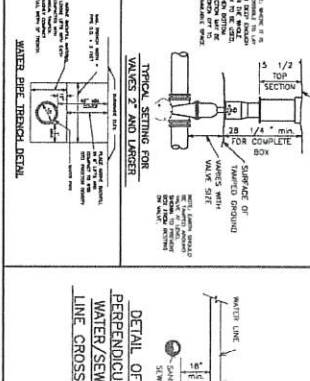
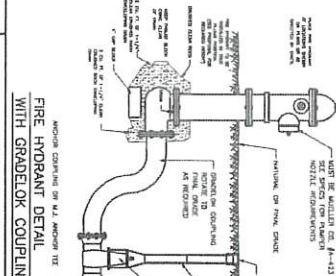
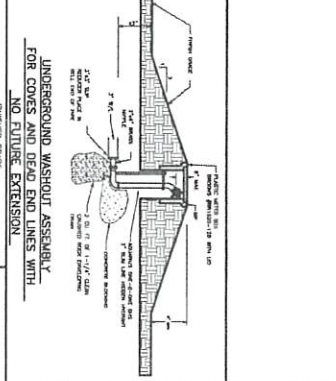
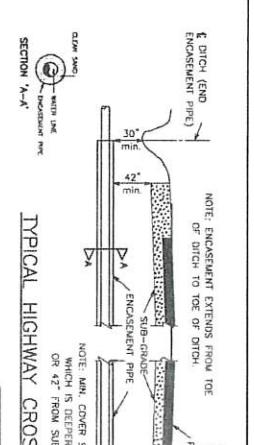
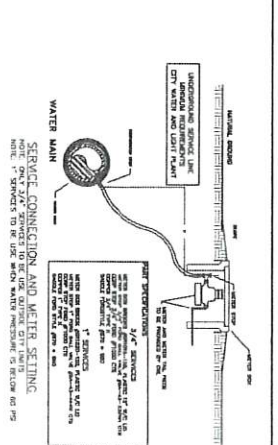
STREET PLAN & PROFILE
EVANS WAY ADDITION
JONESBORO, ARKANSAS
FOR
HABITAT FOR HUMANITY OF GREATER JONESBORO, INC.

ENGINEERS	PLANNERS	SURVEYORS	Date	Scale	Job No.	Sheet
			08-18-19	SHOWN	117070	
			Section	Township	Range	County
			17	14	04E	CRAIGHEAD
			Drawn by	RE	Checked by	GH
			<small>THIS MAP WAS MADE UNDER CONTRACT AND WITHOUT GUARANTEE</small>			
			<small>© 2016, Civilogic</small>			



SIZE & WEIGHT	NO. OF 1000 LB
1" LINE	1,000
2" LINE	2,000
3" LINE	3,000
4" LINE	4,000
6" LINE	6,000
8" LINE	8,000
10" LINE	10,000
12" LINE	12,000
14" LINE	14,000
16" LINE	16,000
18" LINE	18,000
20" LINE	20,000
24" LINE	24,000
30" LINE	30,000
36" LINE	36,000
42" LINE	42,000
48" LINE	48,000
54" LINE	54,000
60" LINE	60,000
72" LINE	72,000
84" LINE	84,000
96" LINE	96,000
108" LINE	108,000
120" LINE	120,000

- MINIMUM BLOTTING NOTES:**
1. ALL BLOCKING SHALL BE AGAINST UNDISTURBED EARTH.
 2. WHERE SOIL CONDITIONS WOULD BE UNSUITABLE FOR CONCRETE BLOCKING OVER JOINTS, THE JOINTS OF THE ANCHOR PILES MUST HAVE A JOINTING JOINT TO BESET FOR JOINTING OF JOINTS.
 3. PILES SHALL BE COVERED WITH FIBER WIRE.
 4. WHERE STEEL IS HIGH STRENGTH REINFORCING MUST BE INSTALLED INTO THE BLOCKING AS COVERED BY BENCHER.
 5. COVERED JOINTS: A MINIMUM OF 3' BELOW NATURAL GRADE.
 6. CLAMPING FROM ON & OFF COMMANDS LINES.
 7. HIGHEST BLOTTING OVERLAP SHALL BE 150%.
 8. HIGHEST BLOTTING OVERLAP SHALL BE 150%.
 9. HIGHEST BLOTTING OVERLAP SHALL BE 150%.
 10. HIGHEST BLOTTING OVERLAP SHALL BE 150%.
 11. HIGHEST BLOTTING OVERLAP SHALL BE 150%.
 12. HIGHEST BLOTTING OVERLAP SHALL BE 150%.
 13. HIGHEST BLOTTING OVERLAP SHALL BE 150%.
 14. HIGHEST BLOTTING OVERLAP SHALL BE 150%.
 15. HIGHEST BLOTTING OVERLAP SHALL BE 150%.
 16. HIGHEST BLOTTING OVERLAP SHALL BE 150%.
 17. HIGHEST BLOTTING OVERLAP SHALL BE 150%.
 18. HIGHEST BLOTTING OVERLAP SHALL BE 150%.
 19. HIGHEST BLOTTING OVERLAP SHALL BE 150%.
 20. HIGHEST BLOTTING OVERLAP SHALL BE 150%.



WATER AND SEWER SEPARATION NOTE:

WATER MAINS AND SANITARY SEWERS SHALL BE CONSTRUCTED AS FAR APART AS PRACTICABLE, AND SHALL BE SEPARATED BY UNDISTURBED AND COMPACTED EARTH. TRENCHES SHOULD BE MAINTAINED BETWEEN WATER LINES AND SEWER LINES OR OTHER SOURCES OF CONTAMINATION, SHALL NOT BE IN THE SAME TRENCH EXCEPT ON THE WRITTEN APPROVAL OF THE ARCHITECT. DEPARTMENT OF HEALTH. IN CLOSE PROXIMITY TO SEWERS MUST BE AT LEAST 18 INCHES ABOVE THE TOP OF THE WATER LINE AT ITS POINT OF CROSSING. THE WATER LINE MUST BE ENCASED IN WATER TIGHT PIPE WITH SEALED WATER TIGHT ENDS EXTENDING AT LEAST 18 INCHES ABOVE THE TOP OF THE WATER LINE. THE WATER LINE IS TO BE MECHANICALLY RESTRAINED. WATER TIGHT ENDS MUST BE MAINTAINED BETWEEN ENCASED WATER TIGHT ENDS IN ADDITION TO THE PRESCRIBED APPROVAL TO THIS MUST BE APPROVED IN WRITING BY THE ARCHITECT.

NOTE:

ALL WATER PIPE TO BE AMMA C-900 PRESSURE CLASS 150/DR 18

