

Ritter Communications Inc  
2400 Ritter Dr  
Jonesboro, AR 72401

## UTILITY RELEASE FORM

I have been notified of the petition to vacate the following described as follows:

Ritter Communications concur with the abandonment of the right of way and easement located at Oaktree Manor, as described in the attached abandonment plat page one, dated December 22, 2017.

### UTILITY COMPANY COMMENTS:

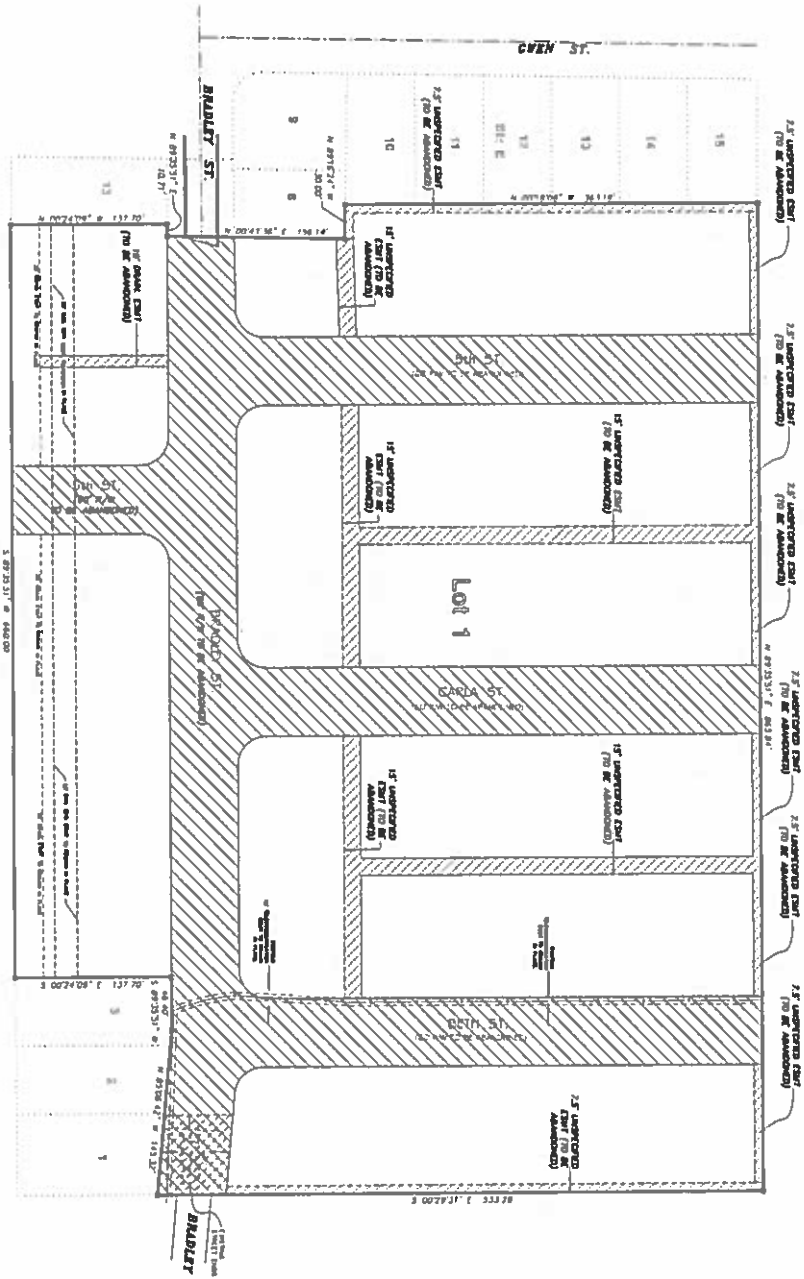
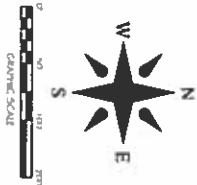
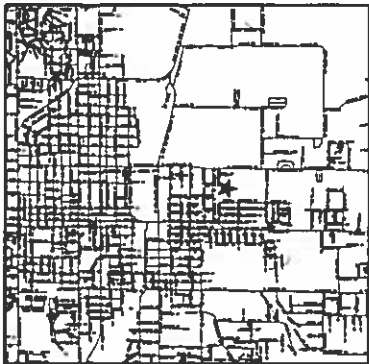
- No objections to the vacation(s) described above.
- No objections to the vacation(s) described above, provided the following described easements are retained.
- Objects to the vacation(s) described above, reason described below:

---

---

*Alice Martin*

Alice Martin Engineering Supervisor  
Ritter Communications Inc  
[alice.martin@rittercommunications.com](mailto:alice.martin@rittercommunications.com)  
870-243-5681 Cell



NOTES:  
 1. LOT LINES ESTABLISHED BY REPLAT  
 2. FIELD AT PLAT CORNER TO PLAT 2017.

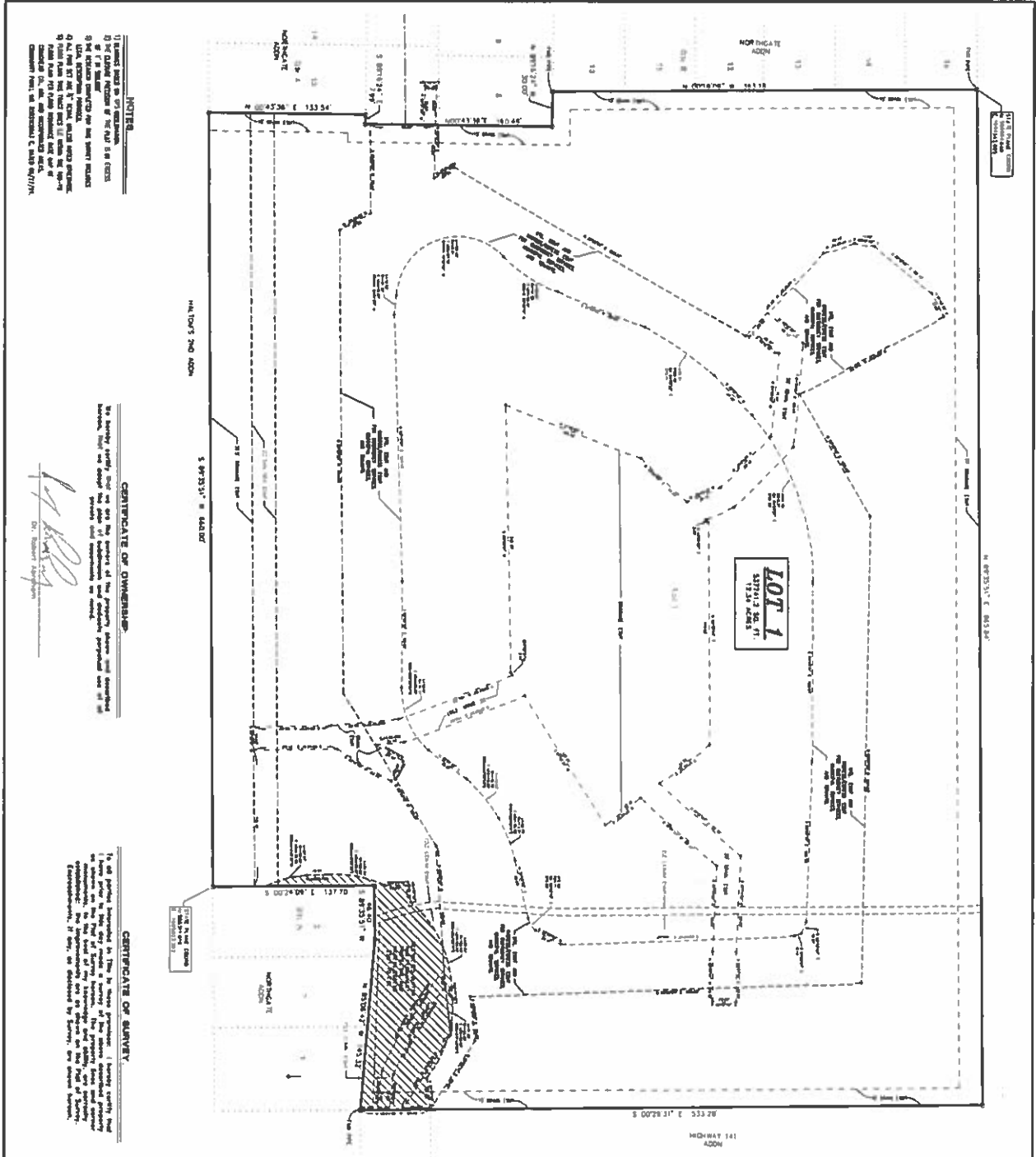


**ABANDONMENT PLAT**  
**OAKTREE MANOR**  
**JONESBORO, ARKANSAS**  
**FOR**  
**DR. ROBERT ABRAHAM**

**Civilogic**

203 Southwood Dr., Jonesboro, AR - (870) 932-7860 - [www.civilogic.net](http://www.civilogic.net)

11-22-17	1"=50'	113050	1 of 1
07	14N	04E	CRACHEAD
Brown, R.E.	RE	Checked by:	GH



- NOTES**
- 1) Survey based on 97.0000 meters.
  - 2) PLAT OF OAKTREE MANOR FOR PARCEL 1248 CROSS
  - 3) ALL DISTANCES MEASURED BY LASER SURVEY METHOD
  - 4) THIS SURVEY WAS CONDUCTED BY THE SURVEYOR
  - 5) ALL DISTANCES MEASURED BY LASER SURVEY METHOD
  - 6) ALL DISTANCES MEASURED BY LASER SURVEY METHOD
  - 7) ALL DISTANCES MEASURED BY LASER SURVEY METHOD
  - 8) ALL DISTANCES MEASURED BY LASER SURVEY METHOD
  - 9) ALL DISTANCES MEASURED BY LASER SURVEY METHOD
  - 10) ALL DISTANCES MEASURED BY LASER SURVEY METHOD

**CERTIFICATE OF OWNERSHIP**

I hereby certify that the bearings and distances are correct and were measured by laser surveying method in accordance with the provisions of the Arkansas Surveying Act of 1931, as amended, and that the plat is a true and correct copy of the original.

*Ray A. Smith*  
 DISTRICT SURVEYOR

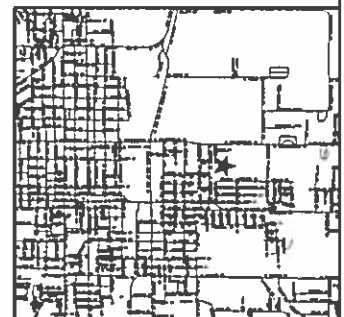
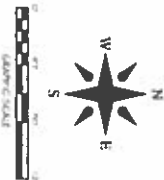
**CERTIFICATE OF SURVEY**

I have performed a survey of the land shown on the plat of survey hereto attached, and certify that the same is a true and correct copy of the original, and that the bearings and distances are correct and were measured by laser surveying method in accordance with the provisions of the Arkansas Surveying Act of 1931, as amended, and that the plat is a true and correct copy of the original.

*Ray A. Smith*  
 DISTRICT SURVEYOR

**OAKTREE MANOR OVERALL REPLAT**

of report made by me as District Surveyor of Jonesboro, Arkansas, in the year 1931, and by me as District Surveyor of Jonesboro, Arkansas, in the year 1932, and by me as District Surveyor of Jonesboro, Arkansas, in the year 1933, and by me as District Surveyor of Jonesboro, Arkansas, in the year 1934, and by me as District Surveyor of Jonesboro, Arkansas, in the year 1935, and by me as District Surveyor of Jonesboro, Arkansas, in the year 1936, and by me as District Surveyor of Jonesboro, Arkansas, in the year 1937, and by me as District Surveyor of Jonesboro, Arkansas, in the year 1938, and by me as District Surveyor of Jonesboro, Arkansas, in the year 1939, and by me as District Surveyor of Jonesboro, Arkansas, in the year 1940, and by me as District Surveyor of Jonesboro, Arkansas, in the year 1941, and by me as District Surveyor of Jonesboro, Arkansas, in the year 1942, and by me as District Surveyor of Jonesboro, Arkansas, in the year 1943, and by me as District Surveyor of Jonesboro, Arkansas, in the year 1944, and by me as District Surveyor of Jonesboro, Arkansas, in the year 1945, and by me as District Surveyor of Jonesboro, Arkansas, in the year 1946, and by me as District Surveyor of Jonesboro, Arkansas, in the year 1947, and by me as District Surveyor of Jonesboro, Arkansas, in the year 1948, and by me as District Surveyor of Jonesboro, Arkansas, in the year 1949, and by me as District Surveyor of Jonesboro, Arkansas, in the year 1950, and by me as District Surveyor of Jonesboro, Arkansas, in the year 1951, and by me as District Surveyor of Jonesboro, Arkansas, in the year 1952, and by me as District Surveyor of Jonesboro, Arkansas, in the year 1953, and by me as District Surveyor of Jonesboro, Arkansas, in the year 1954, and by me as District Surveyor of Jonesboro, Arkansas, in the year 1955, and by me as District Surveyor of Jonesboro, Arkansas, in the year 1956, and by me as District Surveyor of Jonesboro, Arkansas, in the year 1957, and by me as District Surveyor of Jonesboro, Arkansas, in the year 1958, and by me as District Surveyor of Jonesboro, Arkansas, in the year 1959, and by me as District Surveyor of Jonesboro, Arkansas, in the year 1960, and by me as District Surveyor of Jonesboro, Arkansas, in the year 1961, and by me as District Surveyor of Jonesboro, Arkansas, in the year 1962, and by me as District Surveyor of Jonesboro, Arkansas, in the year 1963, and by me as District Surveyor of Jonesboro, Arkansas, in the year 1964, and by me as District Surveyor of Jonesboro, Arkansas, in the year 1965, and by me as District Surveyor of Jonesboro, Arkansas, in the year 1966, and by me as District Surveyor of Jonesboro, Arkansas, in the year 1967, and by me as District Surveyor of Jonesboro, Arkansas, in the year 1968, and by me as District Surveyor of Jonesboro, Arkansas, in the year 1969, and by me as District Surveyor of Jonesboro, Arkansas, in the year 1970, and by me as District Surveyor of Jonesboro, Arkansas, in the year 1971, and by me as District Surveyor of Jonesboro, Arkansas, in the year 1972, and by me as District Surveyor of Jonesboro, Arkansas, in the year 1973, and by me as District Surveyor of Jonesboro, Arkansas, in the year 1974, and by me as District Surveyor of Jonesboro, Arkansas, in the year 1975, and by me as District Surveyor of Jonesboro, Arkansas, in the year 1976, and by me as District Surveyor of Jonesboro, Arkansas, in the year 1977, and by me as District Surveyor of Jonesboro, Arkansas, in the year 1978, and by me as District Surveyor of Jonesboro, Arkansas, in the year 1979, and by me as District Surveyor of Jonesboro, Arkansas, in the year 1980, and by me as District Surveyor of Jonesboro, Arkansas, in the year 1981, and by me as District Surveyor of Jonesboro, Arkansas, in the year 1982, and by me as District Surveyor of Jonesboro, Arkansas, in the year 1983, and by me as District Surveyor of Jonesboro, Arkansas, in the year 1984, and by me as District Surveyor of Jonesboro, Arkansas, in the year 1985, and by me as District Surveyor of Jonesboro, Arkansas, in the year 1986, and by me as District Surveyor of Jonesboro, Arkansas, in the year 1987, and by me as District Surveyor of Jonesboro, Arkansas, in the year 1988, and by me as District Surveyor of Jonesboro, Arkansas, in the year 1989, and by me as District Surveyor of Jonesboro, Arkansas, in the year 1990, and by me as District Surveyor of Jonesboro, Arkansas, in the year 1991, and by me as District Surveyor of Jonesboro, Arkansas, in the year 1992, and by me as District Surveyor of Jonesboro, Arkansas, in the year 1993, and by me as District Surveyor of Jonesboro, Arkansas, in the year 1994, and by me as District Surveyor of Jonesboro, Arkansas, in the year 1995, and by me as District Surveyor of Jonesboro, Arkansas, in the year 1996, and by me as District Surveyor of Jonesboro, Arkansas, in the year 1997, and by me as District Surveyor of Jonesboro, Arkansas, in the year 1998, and by me as District Surveyor of Jonesboro, Arkansas, in the year 1999, and by me as District Surveyor of Jonesboro, Arkansas, in the year 2000, and by me as District Surveyor of Jonesboro, Arkansas, in the year 2001, and by me as District Surveyor of Jonesboro, Arkansas, in the year 2002, and by me as District Surveyor of Jonesboro, Arkansas, in the year 2003, and by me as District Surveyor of Jonesboro, Arkansas, in the year 2004, and by me as District Surveyor of Jonesboro, Arkansas, in the year 2005, and by me as District Surveyor of Jonesboro, Arkansas, in the year 2006, and by me as District Surveyor of Jonesboro, Arkansas, in the year 2007, and by me as District Surveyor of Jonesboro, Arkansas, in the year 2008, and by me as District Surveyor of Jonesboro, Arkansas, in the year 2009, and by me as District Surveyor of Jonesboro, Arkansas, in the year 2010, and by me as District Surveyor of Jonesboro, Arkansas, in the year 2011, and by me as District Surveyor of Jonesboro, Arkansas, in the year 2012, and by me as District Surveyor of Jonesboro, Arkansas, in the year 2013, and by me as District Surveyor of Jonesboro, Arkansas, in the year 2014, and by me as District Surveyor of Jonesboro, Arkansas, in the year 2015, and by me as District Surveyor of Jonesboro, Arkansas, in the year 2016, and by me as District Surveyor of Jonesboro, Arkansas, in the year 2017, and by me as District Surveyor of Jonesboro, Arkansas, in the year 2018, and by me as District Surveyor of Jonesboro, Arkansas, in the year 2019, and by me as District Surveyor of Jonesboro, Arkansas, in the year 2020.



**OAKTREE MANOR OVERALL REPLAT**  
 JONESBORO, ARKANSAS  
 FOR  
 DR. ROBERT ABRAHAM

ENGINEERS PLANNERS SURVEYORS

203 Southwest C. Jonesboro, AR (870) 933-7880 - www.civilogic.net

Scale	Proj. No.	Sheet No.
1"=40'	113050	1 of 1

© 2016, Civilogic