

UTILITY RELEASE FORM

GENERAL UTILITY EASEMENT, PUBLIC ACCESS EASEMENT, ALLEY, STREET, RIGH-OF-WAY

REQUESTED ABANDONMENT: DRAINAGE EASEMENT

I have been notified of the petition to abandon the drainage easement as described following:

A PORTION OF A DRAINAGE EASMENT ACROSS PART OF LOT 1R OF P & H INVESTMENTS LLC REPLAT, RECORDED IN PLAT CABINET 'C' PAGE 283, DOCUMENT #2017R-019622, IN CIRCUIT CLERK OFFICE, CRAIGHEAD COUNTY COURTHOUSE, JONESBORO ARKANSAS, BEING MORE PARTICULARLY DESCRIBED AS FOLLOWS: COMMENCING AT THE SOUTHEAST CORNER OF SAID LOT 1R THENCE NORTH 89°47'07" WEST 89.00 FEET; THENCE NORTH 00°23'53" EAST 54.00 FEET TO THE POINT OF BEGINNING; THENCE SOUTH 89°47'07" WEST 10.07 FEET; THENCE NORTH 27°24'51" WEST 78.21 FEET; THENCE NORTH 17°54'12" EAST 53.58 FEET; THENCE SOUTH 00°23'53" WEST 36.02 FEET; THENCE SOUTH 89°36'07" EAST 19.73 FEET; THENCE SOUTH 64°42'52" EAST 11.81 FEET; THENCE SOUTH 00°23'53" WEST 79.18 FEET TO THE POINT OF BEGINNING PROPER, HAVING AN AREA OF 2,803 SQUARE FEET, 0.06 ACRES MORE OR LESS.



No objections to the abandonment described above.



No objections to the abandonment described above, provided the following easements are retained. (Described below)



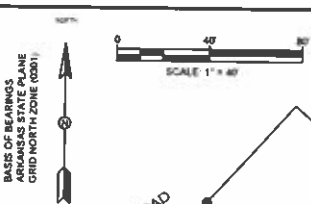
Objection to the abandonment(s), reasons described below.

Described reasons for objections or easements to be retained.

Ritter Communication Inc
Utility Company / Municipality

Alice Manki
Signature of Representative

1-3-21
Title

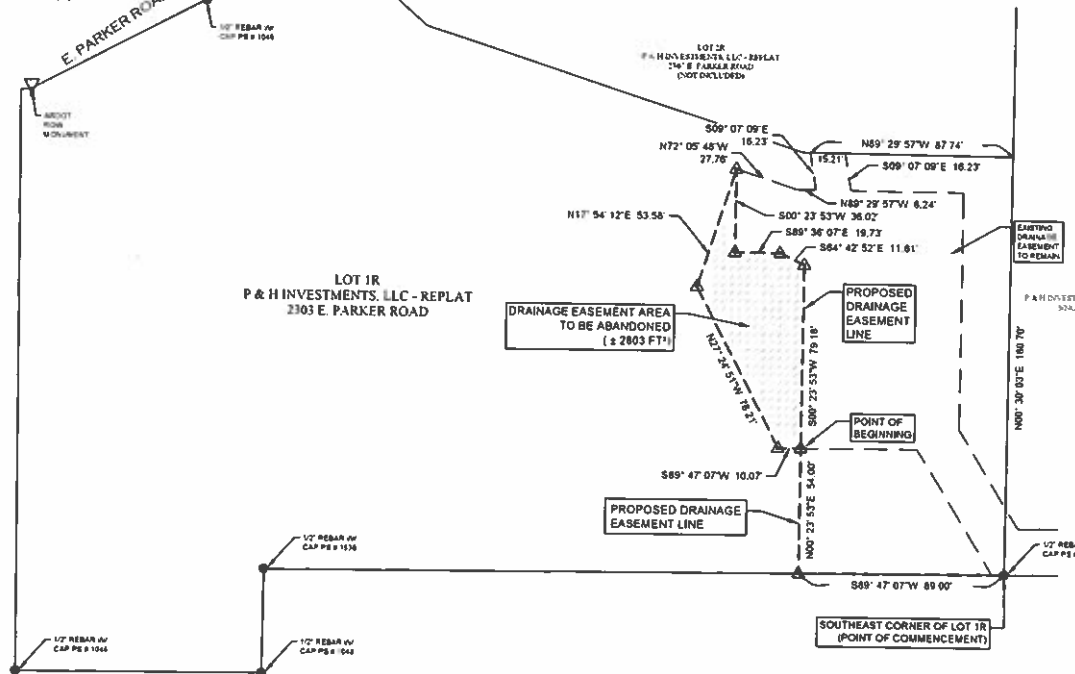


DESCRIPTION OF EASEMENT TO BE ABANDONED.
 A PART OF LOT 1R OF P & H INVESTMENTS, LLC REPLAT, RECORDED IN PLAT CABINET C, PAGE 283, DOCUMENT #2017R-010622, IN CIRCUIT CLERK OFFICE, CRAIGHEAD COUNTY COURTHOUSE, JONESBORO ARKANSAS, BEING MORE PARTICULARLY DESCRIBED AS FOLLOWS:
 COMMENCING AT THE SOUTHEAST CORNER OF SAID LOT 1R THENCE NORTH 89°47'07" WEST 89.00 FEET, THENCE NORTH 00°23'53" EAST 54.00 FEET TO THE POINT OF BEGINNING, THENCE SOUTH 89°47'07" WEST 10.07 FEET, THENCE NORTH 27°24'51" WEST 79.21 FEET, THENCE NORTH 17°54'12" EAST 53.58 FEET, THENCE SOUTH 00°23'53" WEST 36.02 FEET, THENCE SOUTH 89°30'07" EAST 19.73 FEET, THENCE SOUTH 64°42'52" EAST 11.81 FEET, THENCE SOUTH 00°23'53" WEST 79.18 FEET TO THE POINT OF BEGINNING PROPER.
 HAVING AN AREA OF 2,903 SQUARE FEET, 0.06 ACRES MORE OR LESS.

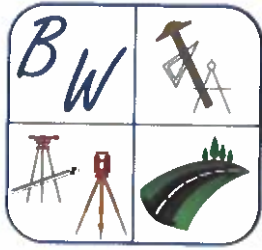


LEGEND

| | |
|--|--------------------------------------|
| | POINT OF BEGINNING |
| | PROPOSED DRAINAGE EASEMENT LINE |
| | EXISTING DRAINAGE EASEMENT TO REMAIN |



DRAINAGE EASEMENT ABANDONMENT PLAT
 LOT 1R OF P & H INVESTMENTS, LLC
 2303 E. PARKER ROAD
 JONESBORO, CRAIGHEAD COUNTY, ARKANSAS
 CLIENT: ONSTEAD PROPERTIES, LLC



**BRANDON WOOD, P.E., P.S.
ENGINEERING & SURVEYING**

112 CR 7625
BROOKLAND, AR 72417
PHONE NO: (870) 930-7504
E-MAIL: bwood@woodengr.com
[WWW.BWOODENGINEERING.COM](http://www.bwoodengineering.com)

December 29, 2020

Ritter Communications INC
2400 Ritter Drive
Jonesboro, AR 72401

**RE: 2303 E. Parker Rd, Lot 1R of P & H Investments Replat
Drainage Easement Abandonment Concurrence Request**

To Whom It May Concern,

Please accept this letter as a formal request to concur with the abandonment of a portion of a drainage easement across Lot 1R of P & H Investments Replat, recorded in the Circuit Clerk's office of Craighead County, Document # 2017R-019622 in the Craighead County Courthouse located in Jonesboro, Arkansas, as shown on the attached plat.

Please fill out the attached Utility Release Form and send to the Jonesboro City Clerk, April Leggett, indicating AT&T concurs with the request.

Please reply by letter to City Clerk April Leggett at P.O. Box 1845 Jonesboro, AR 72403 with a hard copy of the letter and/or by email at cityclerk@jonesboro.org. Also, please send a copy to me at bwood@woodengr.com.

Thanks for your assistance.

If you have any questions, contact me at (870) 930-7504 or bwood@woodengr.com at your convenience.

Sincerely,

Brandon Wood, P.E., P.S.