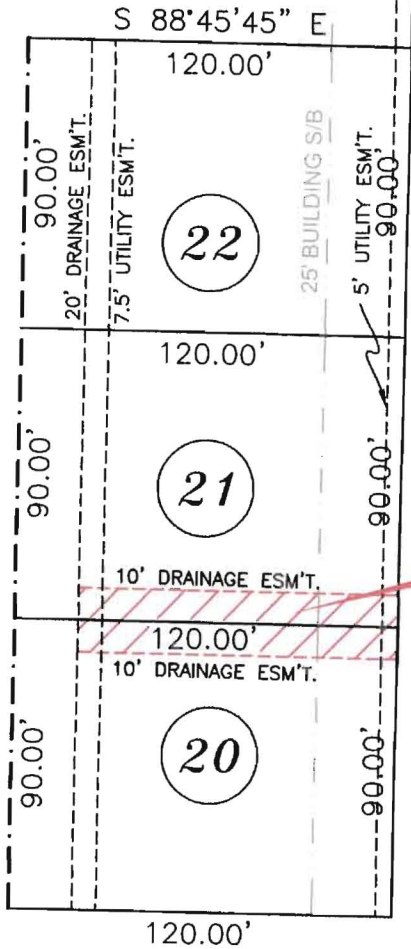
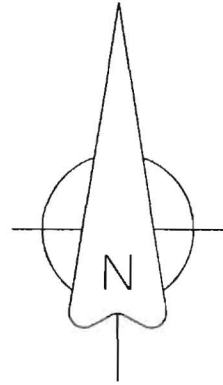


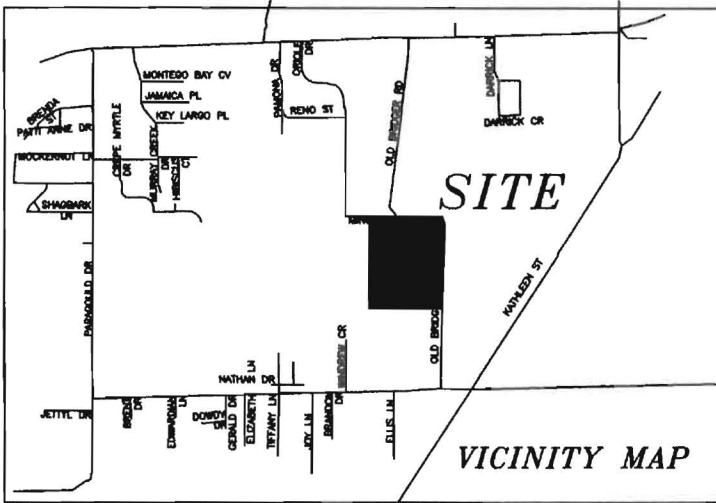
BLOCK "D"



SMITHFIELD DRIVE



20' DRAINAGE EASEMENT TO BE ABANDON



VICINITY MAP

**20 FOOT DRAINAGE EASEMENT:**  
 BETWEEN LOTS 20 AND 21 IN BLOCK "D"  
 BRIDGER PLACE, PHASE II TO THE CITY OF  
 JONESBORO, ARKANSAS AS SHOWN BY PLAT "C"  
 PAGE 00 IN THE OFFICE OF CIRCUIT CLERK AND  
 EX-OFFICIO RECORDER, CRAIGHEAD COUNTY,  
 ARKANSAS

--	--

	<p><b>H&amp;S Hime Professional Surveying Services</b>                  POB No. 353                  BROOKLAND, ARKANSAS 72417</p> <p>PHONE: 870 972 1288                  FAX: 870 972 1011                  E-MAIL: hshime_butch@yahoo.com</p>
--	--

<p><b>ABANDONMENT PLAT</b></p>	
<p>drawn by: H. HIME</p>	<p>20 FOOT DRAINAGE EASEMENT TO BE ABANDON ALONG LINE BETWEEN LOTS 20 &amp; 21 IN BLOCK "D" OF BRIDGER PLACE SUBDIVISION, JONESBORO, AR</p>
<p>date: 11-26-2013</p>	
<p>scale: 1" = 60'</p>	<p>client: PHILLIPS CONSTRUCTION</p>

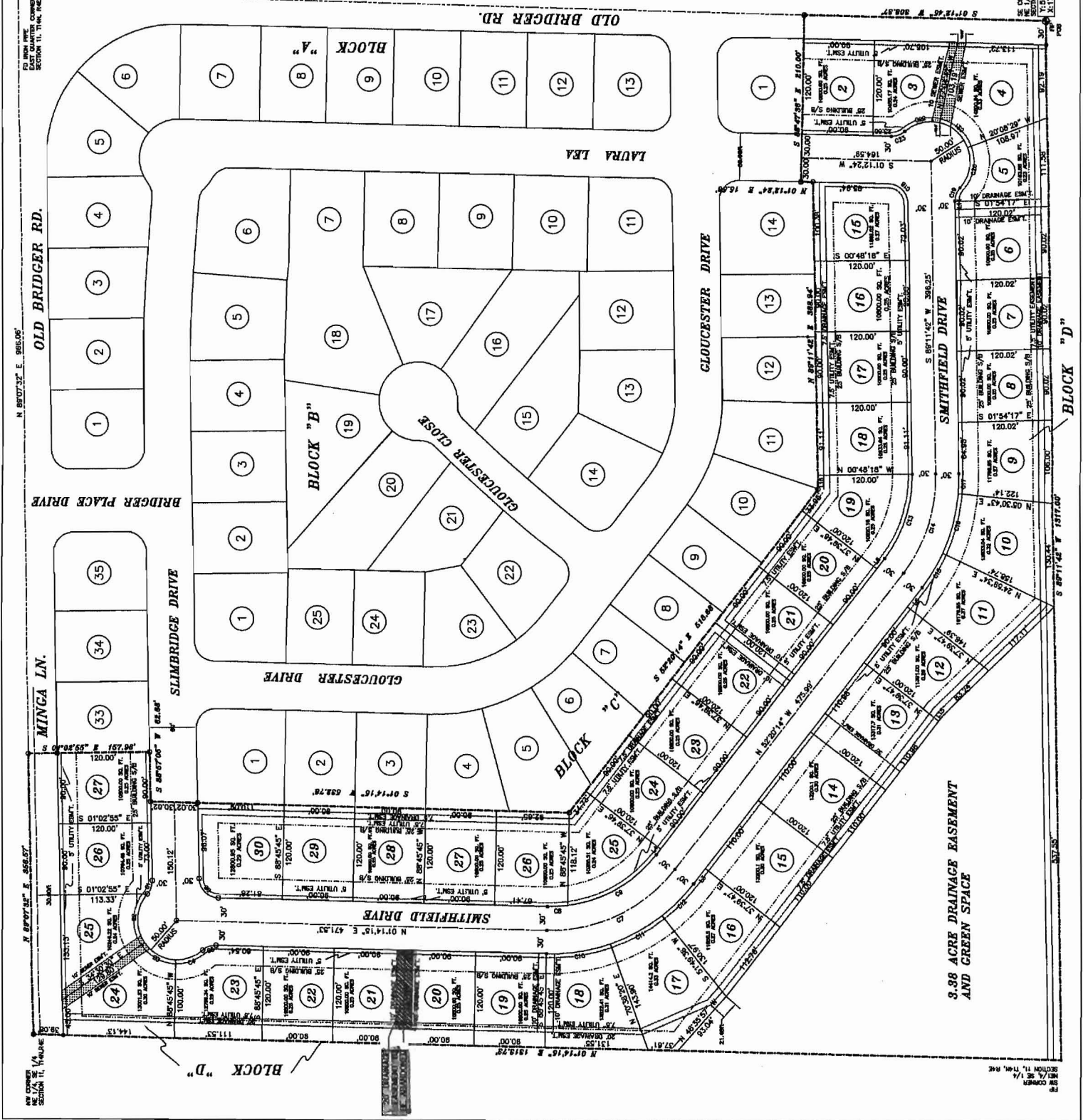
# BRIDGER PLACE SUBDIVISION PHASE II, JONESBORO, ARKANSAS

## DRAINAGE EASEMENT ABANDONMENT PLAN

DATE: 11-25-2013  
 DRAWN BY: BOW  
 H.M.H. PROFESSIONAL SURVEYING SERVICES, INC.  
 HERBERT C. HIME  
 PLS. 4.1142

H&S HIME PROFESSIONAL SURVEYING SERVICES  
 PHONE: 870-972-1288  
 FAX: 870-972-1011  
 E-MAIL: hshime\_butch@yahoo.com  
 BROOKLAND, ARKANSAS 72401  
 POB No 333

LINE	BEARING	DISTANCE	AREA	PERIMETER	LENGTH	WIDTH
1	N 88°07'52" E	965.85	120.00	120.00	120.00	120.00
2	S 01°14'15" E	471.83	120.00	120.00	120.00	120.00
3	N 88°07'52" E	965.85	120.00	120.00	120.00	120.00
4	S 01°14'15" E	471.83	120.00	120.00	120.00	120.00
5	N 88°07'52" E	965.85	120.00	120.00	120.00	120.00
6	S 01°14'15" E	471.83	120.00	120.00	120.00	120.00
7	N 88°07'52" E	965.85	120.00	120.00	120.00	120.00
8	S 01°14'15" E	471.83	120.00	120.00	120.00	120.00
9	N 88°07'52" E	965.85	120.00	120.00	120.00	120.00
10	S 01°14'15" E	471.83	120.00	120.00	120.00	120.00
11	N 88°07'52" E	965.85	120.00	120.00	120.00	120.00
12	S 01°14'15" E	471.83	120.00	120.00	120.00	120.00
13	N 88°07'52" E	965.85	120.00	120.00	120.00	120.00
14	S 01°14'15" E	471.83	120.00	120.00	120.00	120.00
15	N 88°07'52" E	965.85	120.00	120.00	120.00	120.00
16	S 01°14'15" E	471.83	120.00	120.00	120.00	120.00
17	N 88°07'52" E	965.85	120.00	120.00	120.00	120.00
18	S 01°14'15" E	471.83	120.00	120.00	120.00	120.00
19	N 88°07'52" E	965.85	120.00	120.00	120.00	120.00
20	S 01°14'15" E	471.83	120.00	120.00	120.00	120.00
21	N 88°07'52" E	965.85	120.00	120.00	120.00	120.00
22	S 01°14'15" E	471.83	120.00	120.00	120.00	120.00
23	N 88°07'52" E	965.85	120.00	120.00	120.00	120.00
24	S 01°14'15" E	471.83	120.00	120.00	120.00	120.00
25	N 88°07'52" E	965.85	120.00	120.00	120.00	120.00
26	S 01°14'15" E	471.83	120.00	120.00	120.00	120.00
27	N 88°07'52" E	965.85	120.00	120.00	120.00	120.00
28	S 01°14'15" E	471.83	120.00	120.00	120.00	120.00
29	N 88°07'52" E	965.85	120.00	120.00	120.00	120.00
30	S 01°14'15" E	471.83	120.00	120.00	120.00	120.00
31	N 88°07'52" E	965.85	120.00	120.00	120.00	120.00
32	S 01°14'15" E	471.83	120.00	120.00	120.00	120.00
33	N 88°07'52" E	965.85	120.00	120.00	120.00	120.00
34	S 01°14'15" E	471.83	120.00	120.00	120.00	120.00
35	N 88°07'52" E	965.85	120.00	120.00	120.00	120.00



CLIENT: PHILLIPS CONSTRUCTION

ALL STATE PROFESSIONAL SURVEYING SERVICES  
 1000 N. W. 10th St.  
 Jonesboro, Arkansas 72401  
 PHONE: 870-972-1288  
 FAX: 870-972-1011  
 E-MAIL: hshime\_butch@yahoo.com