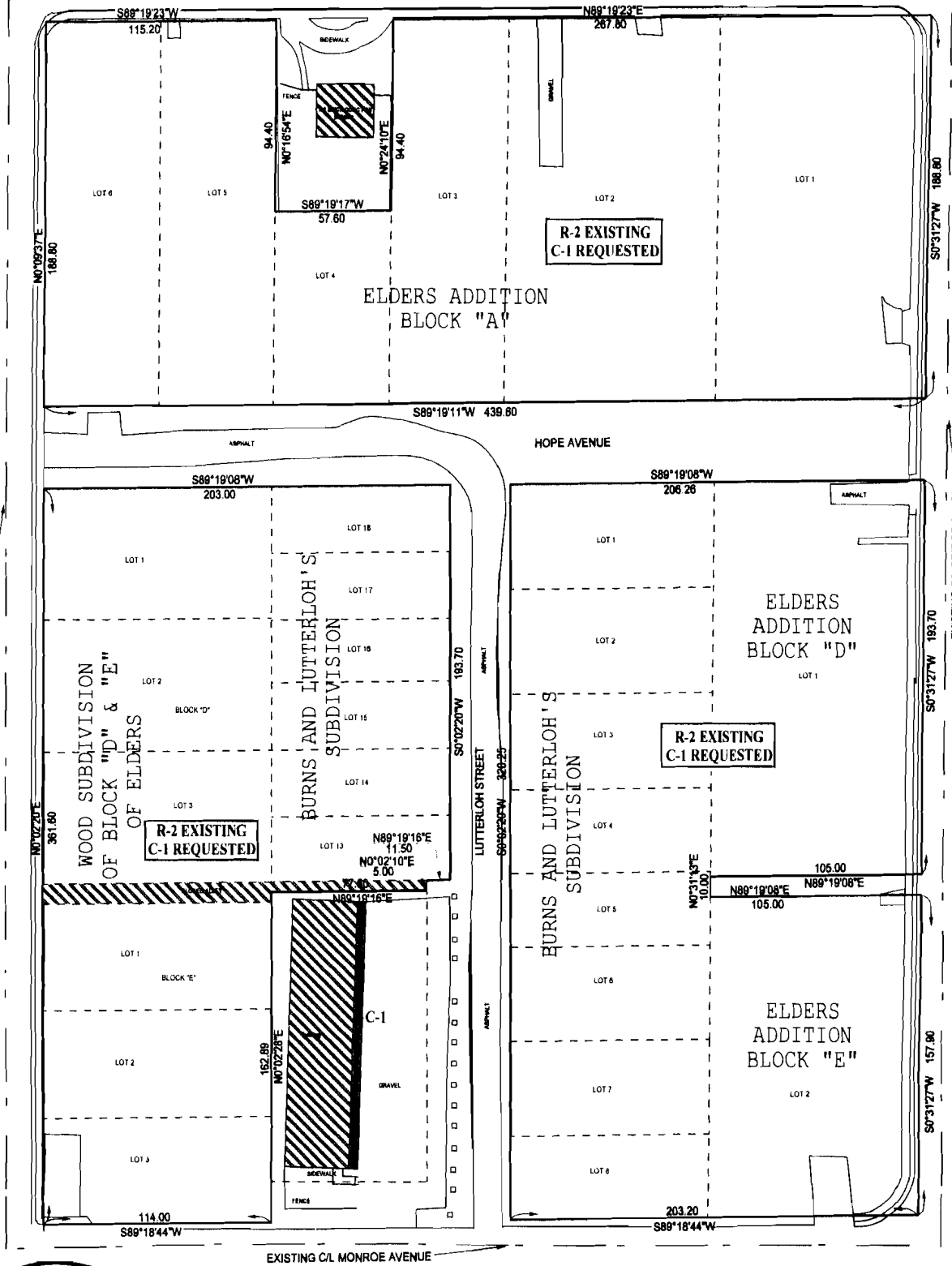


# REZONING PLAT

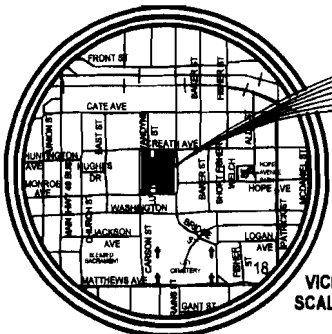
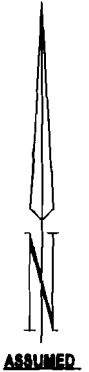
R-2

EXISTING C/L CREATH AVENUE



C-1

R-2



THIS PLAT

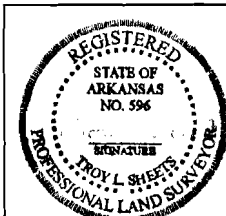
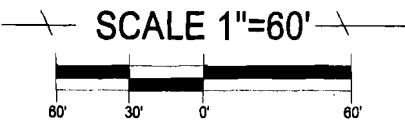
**C-1**

**DESCRIPTION**  
ALL OF LOTS 1, 2, 3, 5, 6 AND THE SOUTH HALF OF LOT 4 OF BLOCK "A"; LOT 1 OF BLOCK "D" AND LOT 2 OF BLOCK "E" OF ELDERS ADDITION TO JONESBORO, ARKANSAS. LOTS 1, 2, 3, 4, 5, 6, 7, 8, 13, 14, 15, 16, 17, AND 18 AND THE NORTH HALF OF A CLOSED ALLEY LYING SOUTH OF AND ADJACENT TO LOT 13 OF BURNS AND LUTTERLOH'S SUBDIVISION TO JONESBORO, ARKANSAS. LOTS 1, 2 AND 3 OF BLOCK "D" AND THE NORTH HALF OF A CLOSED ALLEY LYING SOUTH OF AND ADJACENT TO LOT 3 OF BLOCK "D" AND LOTS 1, 2 AND 3 AND THE SOUTH HALF OF A CLOSED ALLEY LYING NORTH AND ADJACENT TO LOT 1 OF BLOCK "E" OF WOOD SUBDIVISION OF BLOCK "D" AND "E" OF ELDERS ADDITION TO JONESBORO, ARKANSAS. ALL OF LUTTERLOH STREET AND ALL OF HOPE AVENUE LYING EAST OF CARSON STREET AND WEST OF BRIDGE STREET AND AN ALLEY LYING SOUTH OF AND ADJACENT TO LOT 1 OF BLOCK "D" AND NORTH OF AND ADJACENT TO LOT 2 OF BLOCK "E" OF ELDERS ADDITION TO JONESBORO, ARKANSAS.

**NOTE:** THIS PROPERTY IS NOT LOCATED IN A FLOOD ZONE ACCORDING TO PANEL 43 OF 200 OF THE NATIONAL FLOOD INSURANCE RATE MAP OF CRAIGHEAD COUNTY, ARKANSAS AND INCORPORATED AREAS, EFFECTIVE DATE SEPTEMBER 27, 1991.

Copyright 2001 A.E. & T., LLC

WE HEREBY CERTIFY THAT WE ARE THE OWNERS OF THE PROPERTY SHOWN AND DESCRIBED HEREON, THAT WE ADOPT THE PLAN OF SUBDIVISION AND DEDICATE PERPETUAL USE OF STREETS AND EASEMENTS AS NOTED.



NOT VALID WITHOUT ORIGINAL SIGNATURE



**ASSOCIATED ENGINEERING AND TESTING, LLC**  
CIVIL ENGINEERING, LAND SURVEYING AND MATERIALS TESTING  
1721 DAN AVENUE - JONESBORO, AR 72401  
PH: 870-932-3894 FAX: 870-932-1664

CLIENT  
**JONESBORO REAL ESTATE HOLDINGS COMPANY, INC.**

DRAWN: CWO/CAD CHECKED: JJK DATE: 11/14/01 SHEET  
SCALE: 1"=60' CADD FILE: XXXXX DWG#: T80119R22 1 OF 1