

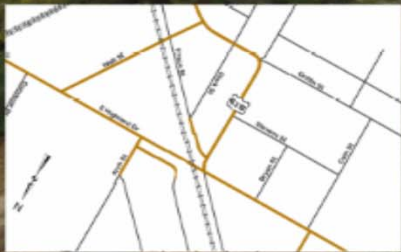


Arkansas Department of Transportation 2016-2020 STIP Projects





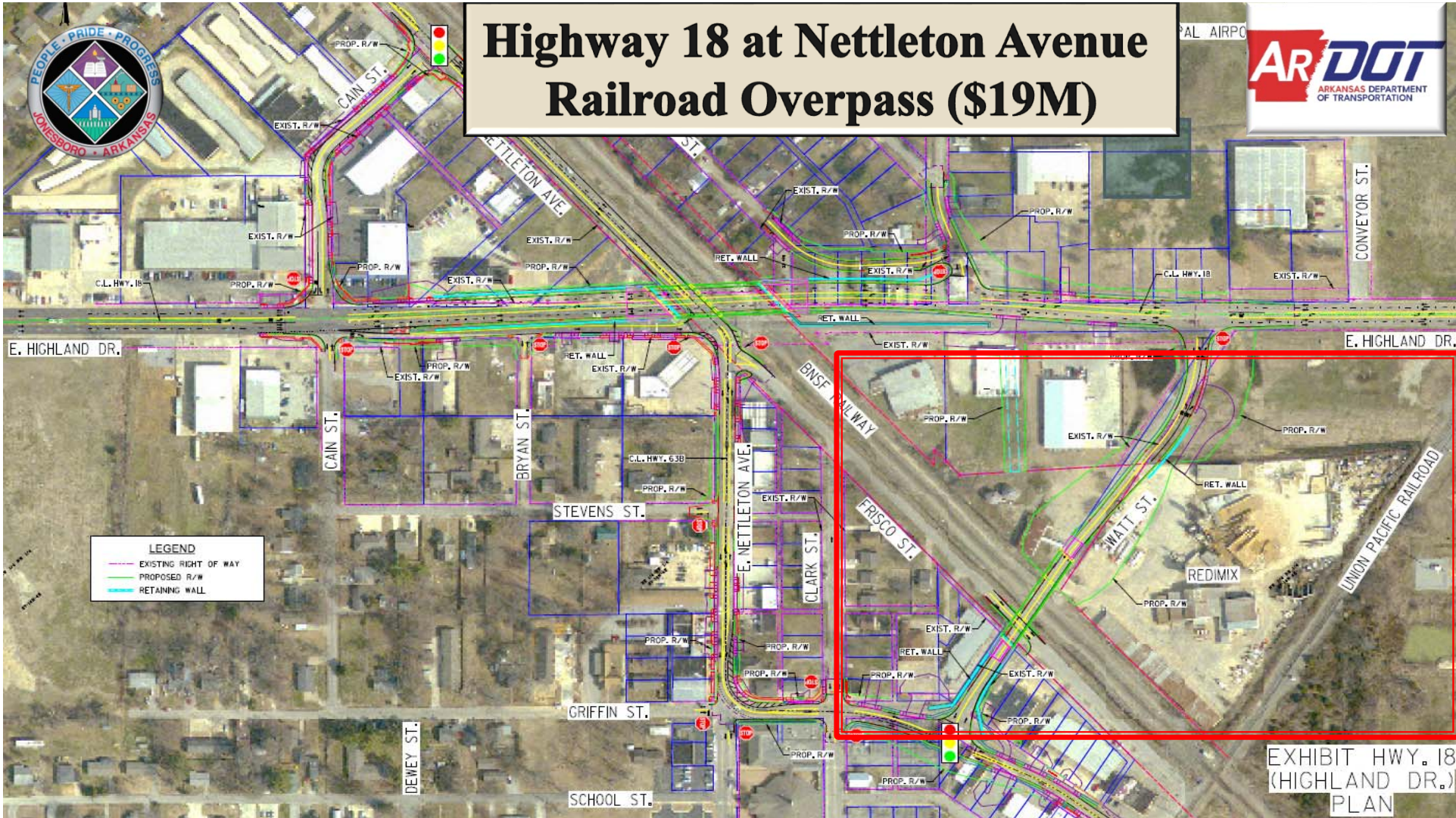
Highway 18 at Nettleton Avenue Railroad Overpass (\$19M)



- Currently in Right-of-Way Acquisition and Utility Relocation Phases
- 33 of 54 Properties Acquired
- Project to be let in 2018
- City Share \$3.1M

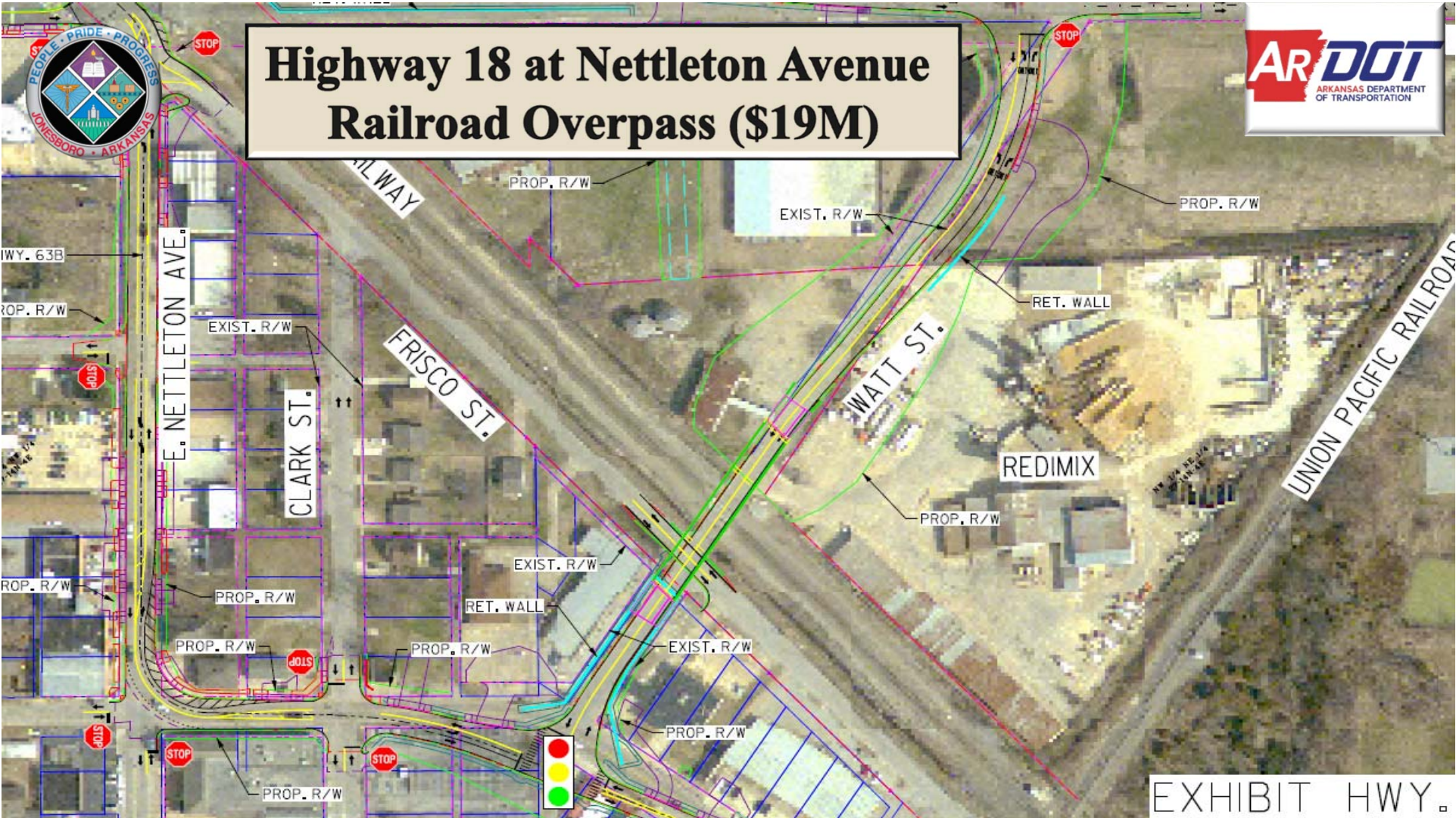


Highway 18 at Nettleton Avenue Railroad Overpass (\$19M)





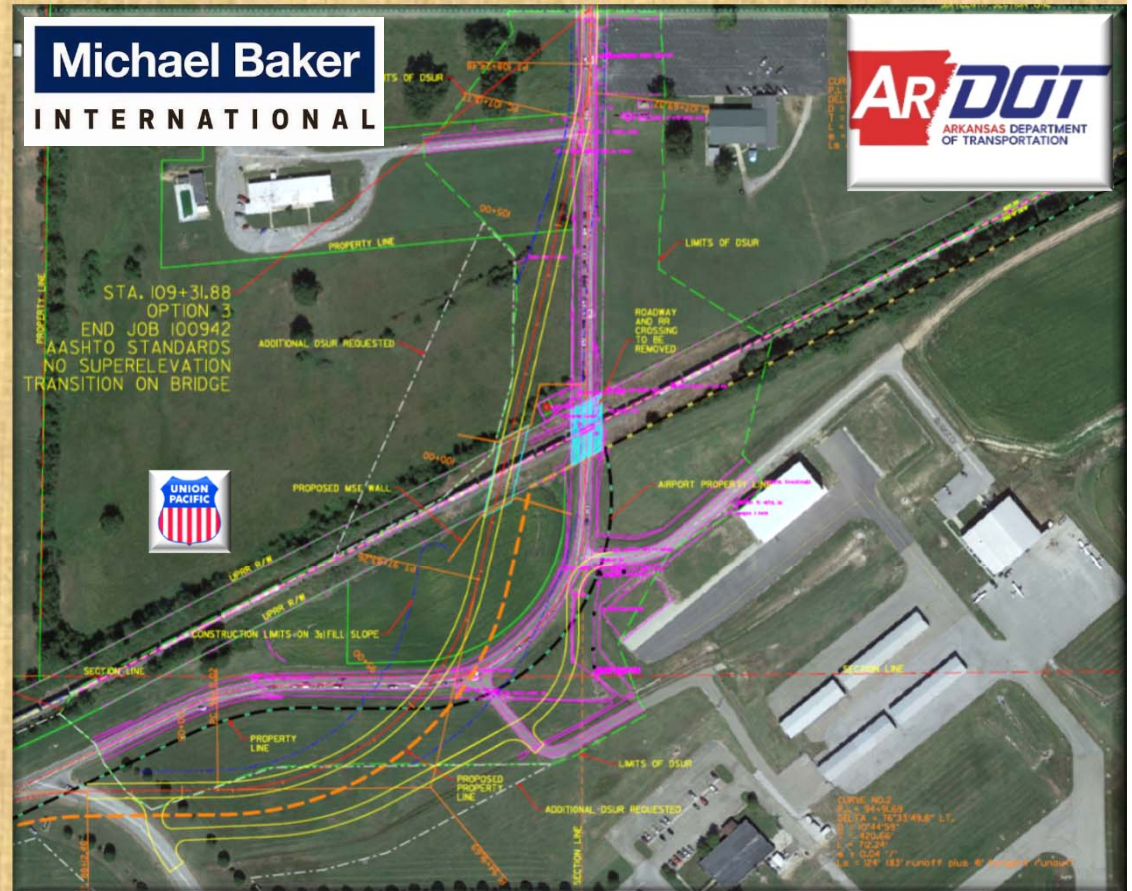
Highway 18 at Nettleton Avenue Railroad Overpass (\$19M)

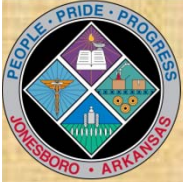




Airport Road Railroad Overpass

- Working on 60% Design Plans
- Estimated Project Cost \$11M
- City Share \$1.4M
- Estimated Construction 2019



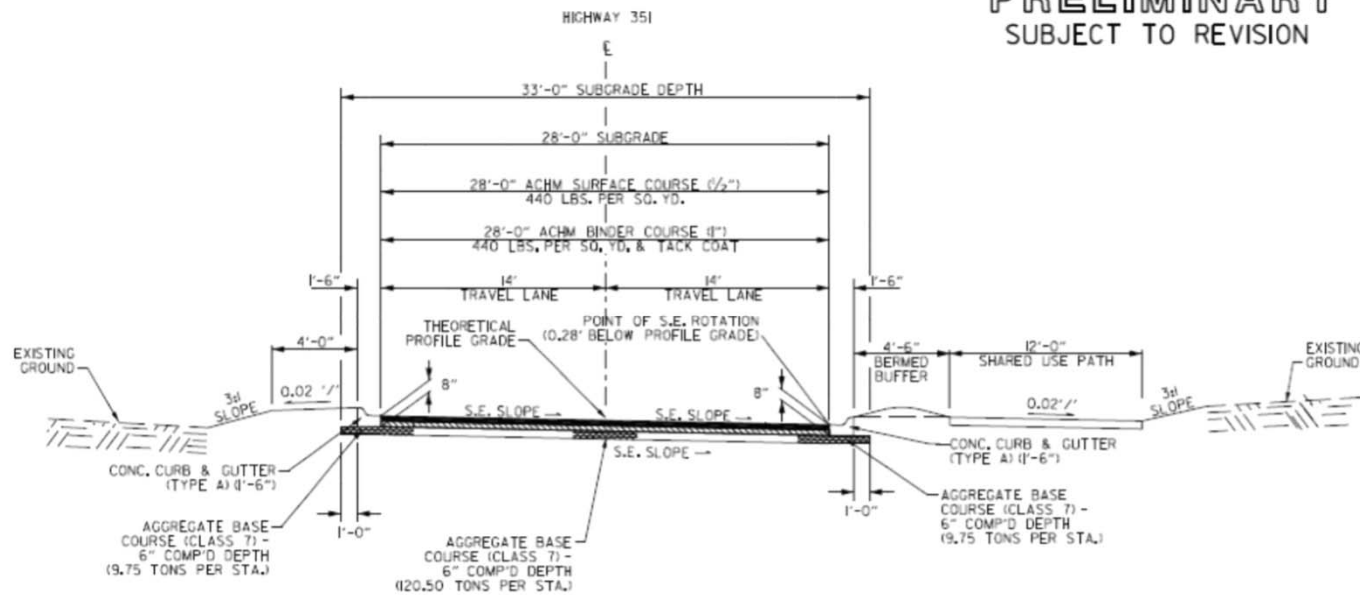


Airport Road Railroad Overpass

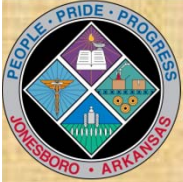
Michael Baker
INTERNATIONAL



PRELIMINARY
SUBJECT TO REVISION

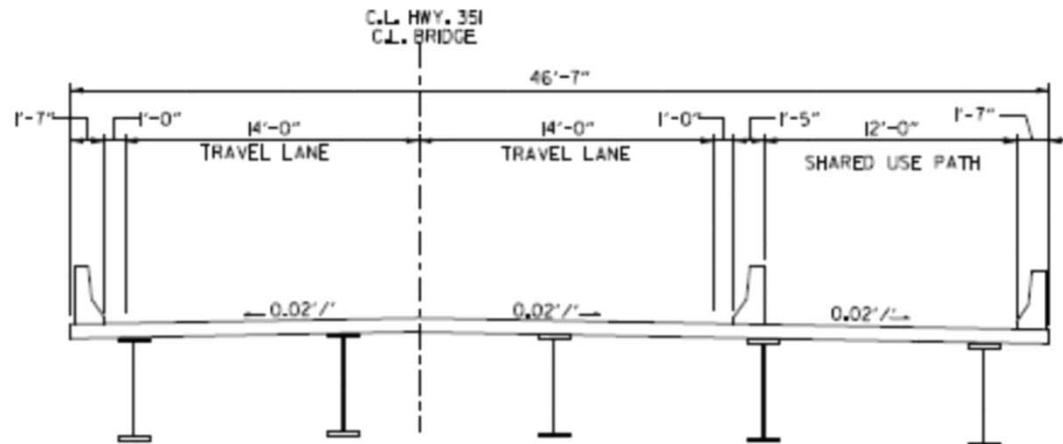


HIGHWAY 351- SUPERELEVATED TYPICAL SECTION



Airport Road Railroad Overpass

Michael Baker
INTERNATIONAL



TYPICAL SECTION - HWY. 351 BRIDGE



A FISHER ARNOLD
ENGINEERS | ARCHITECTS | CONSULTANTS | PLANNERS

Highway 49 (Southwest Drive) at Parker Road

7,700 ADT

EXISTING RIGHT OF WAY
PROPOSED RIGHT OF WAY

32,000 ADT

- Estimated Project Cost \$2.2M
- City Share \$200K
- Estimated Construction 2018
- Currently at 30% Design Plans



A FISHER ARNOLD
ENGINEERS | ARCHITECTS | CONSULTANTS | PLANNERS

Highway 49 (Southwest Drive) at Parker Road





**Highway 1B
Road Improvements**

- **Estimated Project Cost \$2.4M**
- **City Share \$400K**
- **Estimated Construction 2018**
- **Currently at 30% Design Plans**



Highway 1B Road Improvements



A FISHER ARNOLD
ENGINEERS | ARCHITECTS | CONSULTANTS | PLANNERS



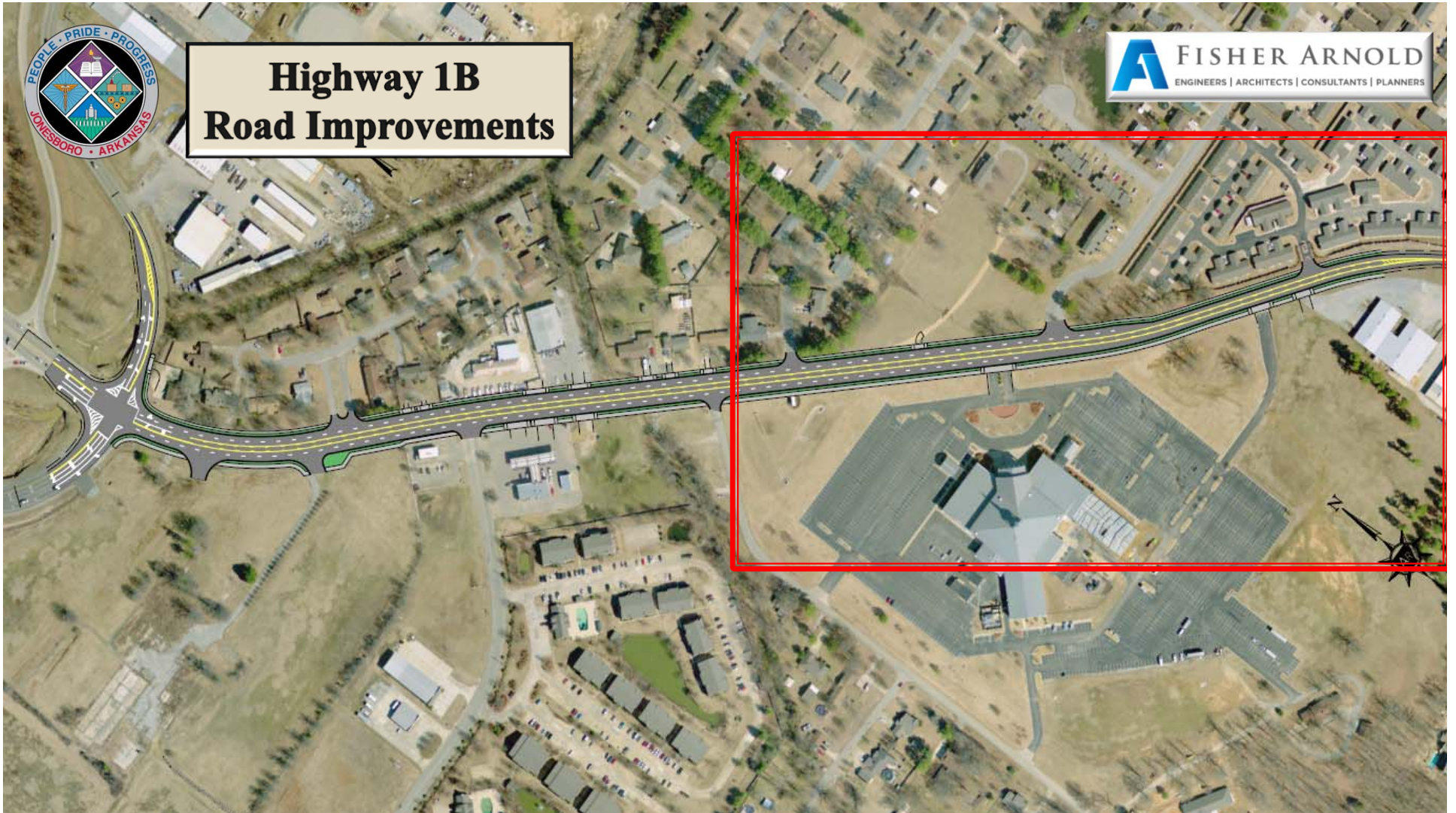


Highway 1B Road Improvements





Highway 1B Road Improvements





Highway 1B Road Improvements



Lakewood Drive.

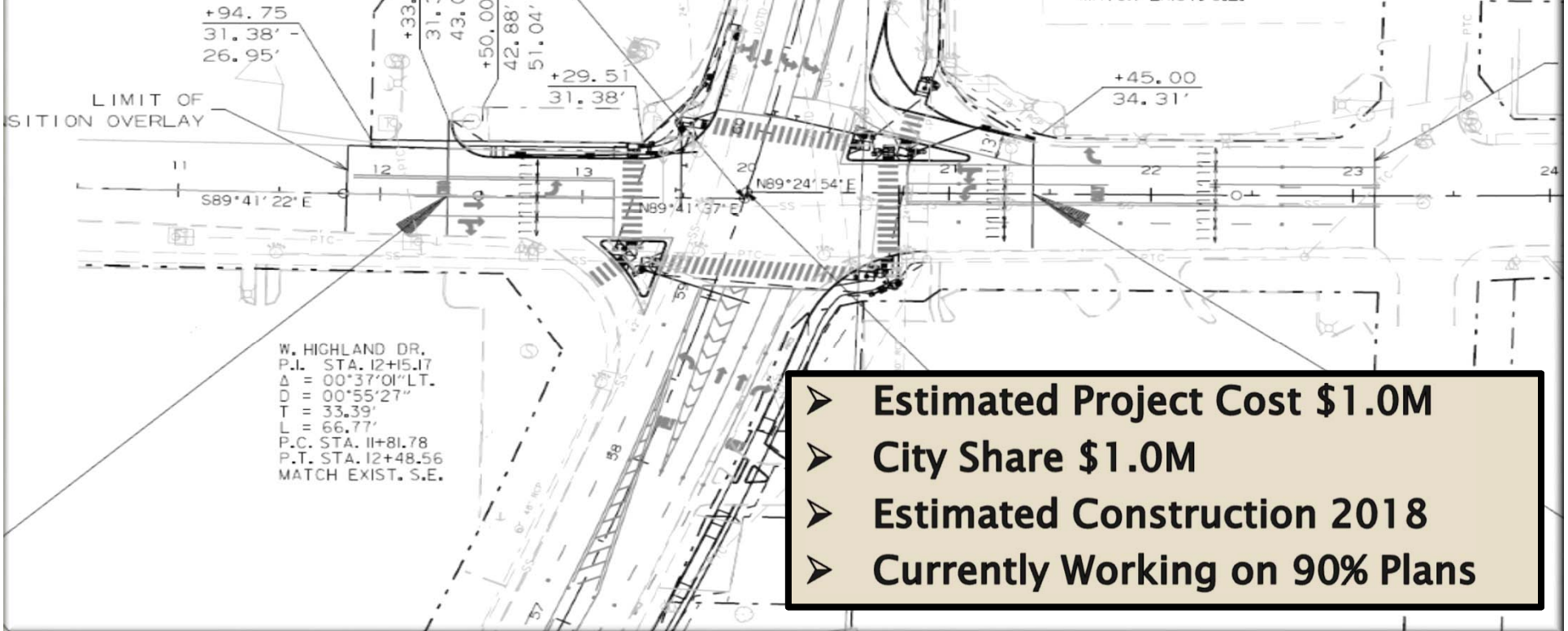




Highway 18 at Main Street Road Improvements



E. HIGHLAND DR.
P.I. STA. 23+67.68
 $\Delta = 01^{\circ}24'59''$ LT.
D = $00^{\circ}33'44''$
T = 125.96'
L = 251.90'
P.C. STA. 22+41.73
P.T. STA. 24+93.62
MATCH EXIST. S.E.



W. HIGHLAND DR.
P.I. STA. 12+15.17
 $\Delta = 00^{\circ}37'01''$ LT.
D = $00^{\circ}55'27''$
T = 33.39'
L = 66.77'
P.C. STA. 11+81.78
P.T. STA. 12+48.56
MATCH EXIST. S.E.

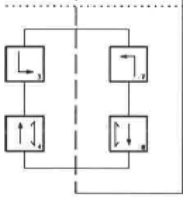
- Estimated Project Cost \$1.0M
- City Share \$1.0M
- Estimated Construction 2018
- Currently Working on 90% Plans



Highway 18 at Main Street Road Improvements



PHASING DIAGRAM



SIGNAL FACES
12" LENSES

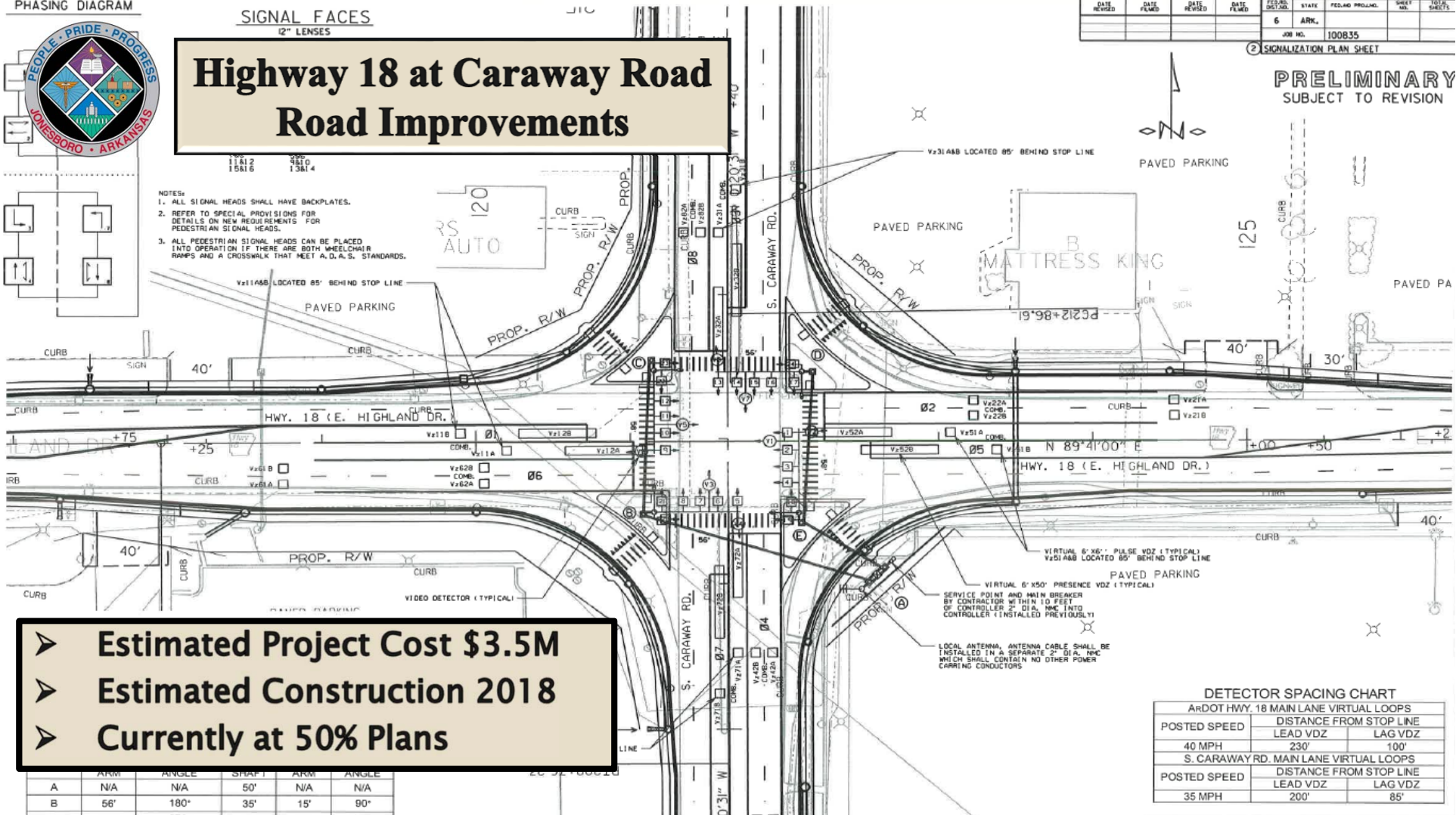
Highway 18 at Caraway Road Road Improvements

- NOTES:
1. ALL SIGNAL HEADS SHALL HAVE BACKPLATES.
 2. REFER TO SPECIAL PROVISIONS FOR DETAILS ON NEW REQUIREMENTS FOR PEDESTRIAN SIGNAL HEADS.
 3. ALL PEDESTRIAN SIGNAL HEADS CAN BE PLACED INTO OPERATION IF THERE ARE BOTH WHEELCHAIR RAMP AND A CROSSWALK THAT MEET A.D.A.S. STANDARDS.

DATE REVISED	DATE PLANNED	DATE REVISED	DATE PLANNED	DESIGN DIST. NO.	STATE	FED. AID PROJ. NO.	SHEET NO.	TOTAL SHEETS
				6	ARK.		100835	

2 SIGNALIZATION PLAN SHEET

PRELIMINARY
SUBJECT TO REVISION



➤ Estimated Project Cost \$3.5M
 ➤ Estimated Construction 2018
 ➤ Currently at 50% Plans

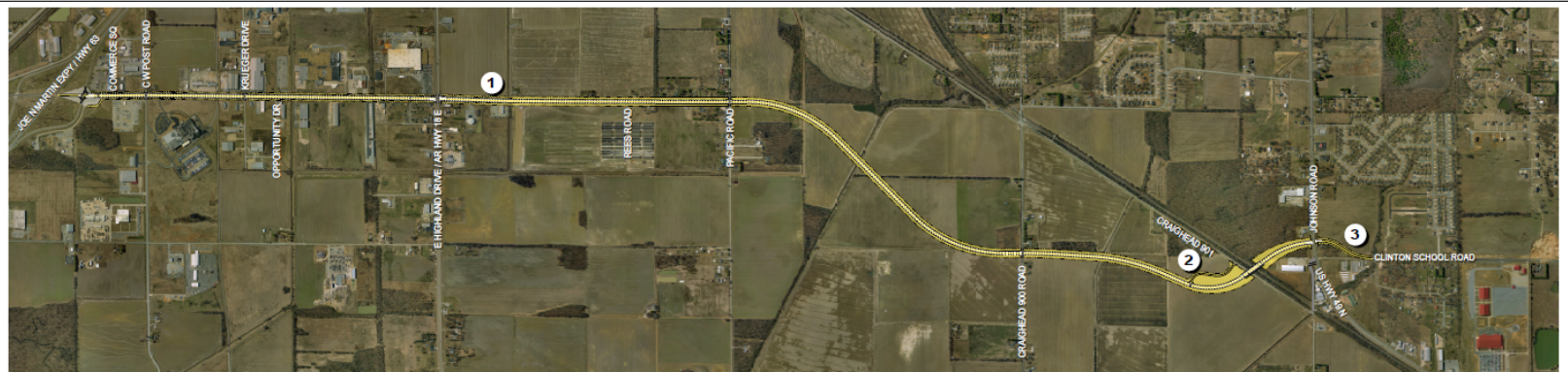
	ARM	ANGLE	SHAFT	ARM	ANGLE
A	N/A	N/A	50'	N/A	N/A
B	56'	180°	35'	15'	90°

DETECTOR SPACING CHART

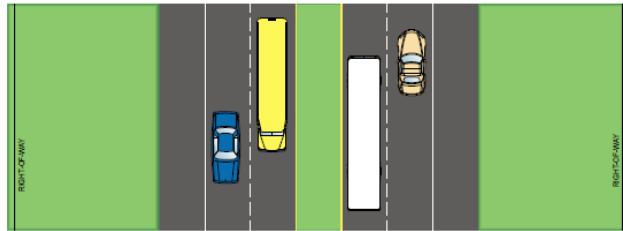
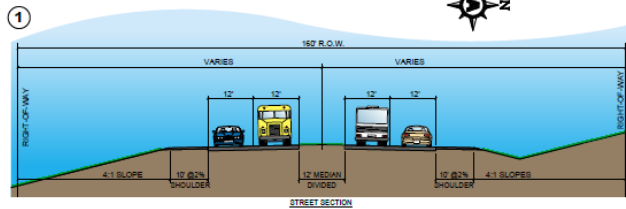
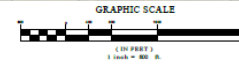
POSTED SPEED	ARDOT HWY. 18 MAIN LANE VIRTUAL LOOPS	
	DISTANCE FROM STOP LINE	LAG VDZ
40 MPH	230'	100'
POSTED SPEED	S. CARAWAY RD. MAIN LANE VIRTUAL LOOPS	
	DISTANCE FROM STOP LINE	LAG VDZ
35 MPH	200'	85'



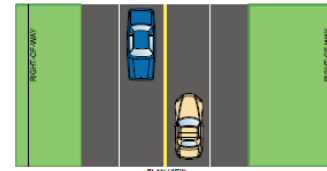
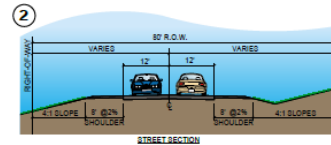
Commerce Drive Extension



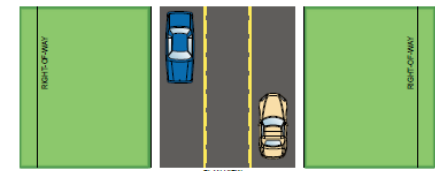
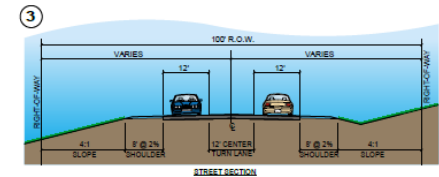
COMMERCE DRIVE EXTENSION & WIDENING
CLINTON SCHOOL ROAD TO HIGHWAY 63



TYPICAL 4-LANE SECTION WITH OPEN SHOULDER / MEDIAN DIVIDED
(HIGHWAY 49 TO HIGHWAY 63)
NOT TO SCALE



TYPICAL 2-LANE SECTION WITH OPEN SHOULDER
(COMMERCE DRIVE TO COUNTY ROAD 321)
NOT TO SCALE



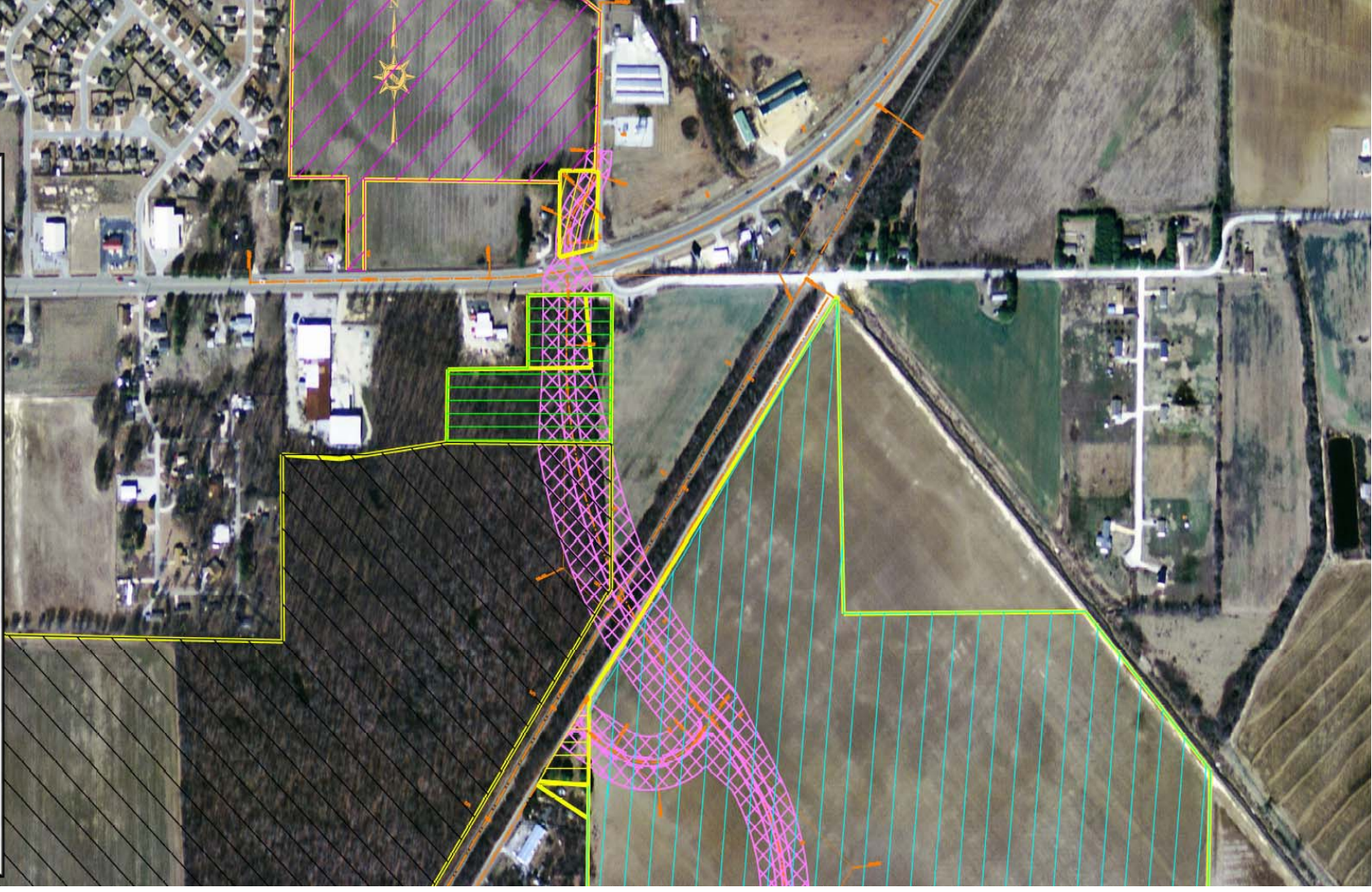
TYPICAL 3-LANE SECTION WITH OPEN SHOULDER
(CLINTON SCHOOL ROAD TO HIGHWAY 49)
NOT TO SCALE

AERIAL EXHIBIT
PROPOSED IMPROVEMENTS
JONESBORO, ARKANSAS
SEPTEMBER, 2015

FISHER ARNOLD
ENGINEERING ARCHITECTURE
2000 Westpark Drive • Memphis, Tennessee 38119
(901) 875-1100 • Fax: (901) 875-1101

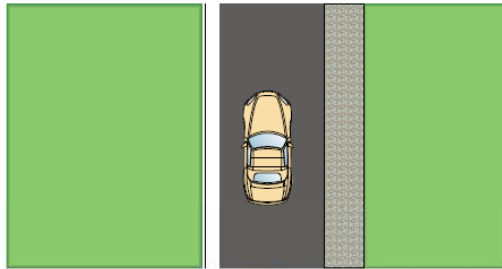
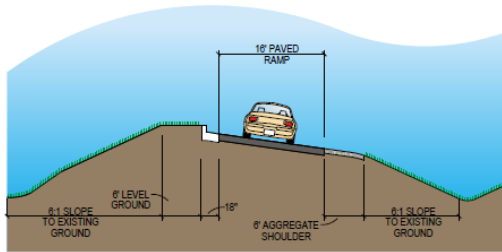


Commerce Drive Extension





I-555 at Highway 49 Interchange Improvements



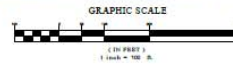
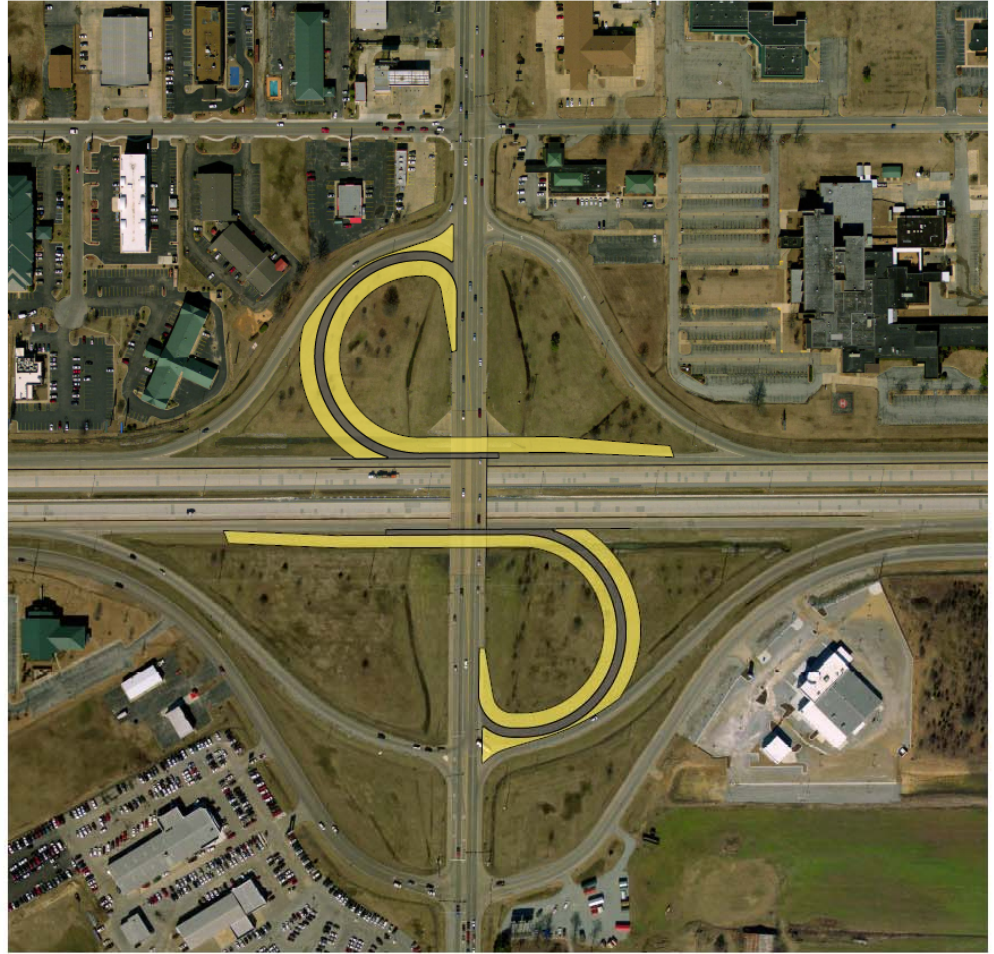
AERIAL EXHIBIT PROPOSED IMPROVEMENTS

JONESBORO, ARKANSAS
SEPTEMBER, 2015



NOTES

1. A CLOVERLEAF RAMP WILL BE CONSTRUCTED TO CONNECT WESTBOUND HIGHWAY 63 TO SOUTHBOUND HIGHWAY 49.
2. A CLOVERLEAF RAMP WILL BE CONSTRUCTED TO CONNECT EASTBOUND HIGHWAY 63 TO NORTHBOUND HIGHWAY 49.



HIGHWAY 63 AT HIGHWAY 49 INTERSECTION IMPROVEMENTS



Questions ?