

PAPER LEAF BAGS

Sanitation Budget

2020	\$4,730,301*
2019	\$4,575,418*
2018	\$5,538,167
2017	\$4,545,053
2016	\$3,761,451

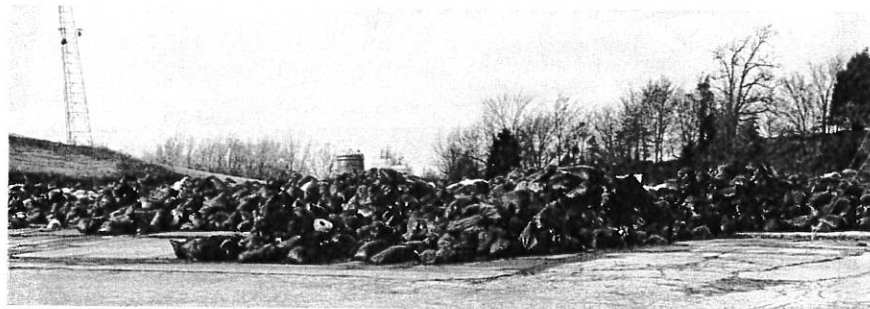
* Include multi-year lease of some new equipment.

Current Situation

- Plastic leaf bags can't be dumped in the incinerator.
 - *Must be cut opened manually during pickup to dump into truck.*
 - *Causes backups on yard waste pickup in heavy seasons.*
 - Estimated \$7,000 in overtime (2019) due to plastic bags.
- Data:
 - *6,945 tons of yard waste in 2019 (includes limbs).*
 - *Incinerator burned for 975 hours, burning 7.15 tons per hour.*
 - *308 tons of ash*

Plastic Bags Stored at Former Landfill at Strawfloor

4,000 to 5,000 bags



Other Cities – Residential Waste

City	Sanitation Monthly Cost	Yard Waste Collection
Jonesboro	None	Any Bag
Little Rock	\$28	Any Bag
Paragould	\$12	Any Bag
Walnut Ridge	None	Any Bag
Fayetteville	\$10-\$22	Paper/Container
North Little Rock	None	Leaf Truck
Conway	None	Paper/Container
Jackson, TN	\$18	Leaf Truck
Jefferson City, MO*	\$30	Landfill
Rogers*	\$13	Paper: \$2/bag
Benton*	Varies by Company	Landfill
Poplar Bluff, MO*	Varies, est. \$27	Landfill

* Private Operator

Cost Per Bag

- Plastic Bag: 33-39 gallon with drawstring

- 20c to 38c/bag



- Paper Bag: 30 gallon

- 39c to 62c/bag



Potential Amendments

- Allow for plastic/metal container or reusable plastic yard waste bag, maximum 32 gallons.
 - *About \$15-\$20.*
- Allow for either paper or biodegradable bags.
- Start effective date on August 1, 2020 to allow for retail stock up and educating customers.

