

CMMsr:sc
May 15, 1997

BEFORE THE CITY COUNCIL
OF THE CITY OF JONESBORO, ARKANSAS

IN THE MATTER OF THE CLOSING OF
A PORTION OF A DRAINAGE EASEMENT
LOCATED IN SAGE MEADOWS SUBDIVISION,
PHASE 1-D, TO THE CITY OF JONESBORO

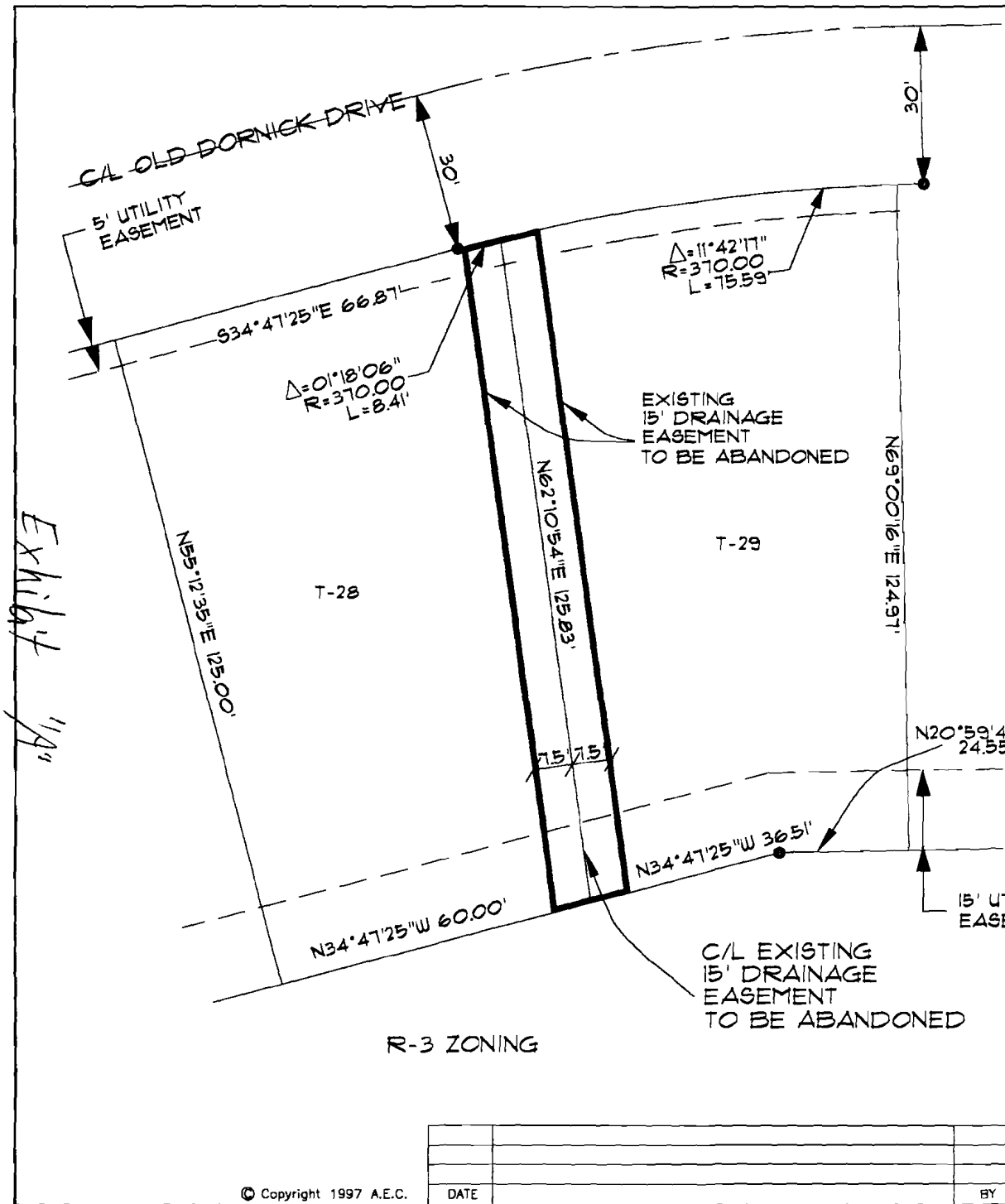
PETITION

Comes Sage Meadows Development, Inc., by and through its attorneys, Mooney Law Firm, and petitions the City Council of the City of Jonesboro, Arkansas, to abandon the drainage easement which is located between Lots T-12A and T-13A, and Lots T-33A and T-34 in Sage Meadows Subdivision, Phase 1-D to the City of Jonesboro, Arkansas.

Plats of said property showing the portion of the Drainage Easement to be abandoned are attached hereto as Exhibit "A".

MOONEY LAW FIRM
Box 1423
Jonesboro, AR 72403
501 - 935-5847

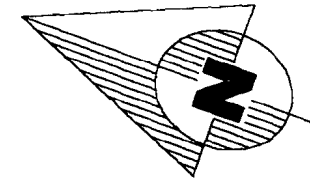
By Charles M. Mooney
Charles M. Mooney, Sr.
Bar No. 61020
Attorney for Sage
Meadows Development



DESCRIPTION

SOUTH 7.5 FEET OF LOT T-28 TOGETHER WITH THE NORTH 7.5 FEET OF LOT T-29, ACCORDING TO THE PLAT OF SAGE MEADOWS PHASE I-D, JONESBORO, ARKANSAS, CRAIGHEAD COUNTY ARKANSAS.

CONTAINING IN ALL 1,887 SQ. FT. OR 0.043 ACRES, MORE OR LESS.



(ASSUMED NORTH)



GRAPHIC SCALE
IN FEET

ASSOCIATED ENGINEERING CO.
ENGINEERING AND LAND SURVEYING
1721 DAN AVENUE - JONESBORO, AR 72401
501-932-3594

EASEMENT ABANDONMENT SKETCH
SAGE MEADOWS - PHASE I-D
JONESBORO, ARKANSAS

DATE	BY

Exhibit 119

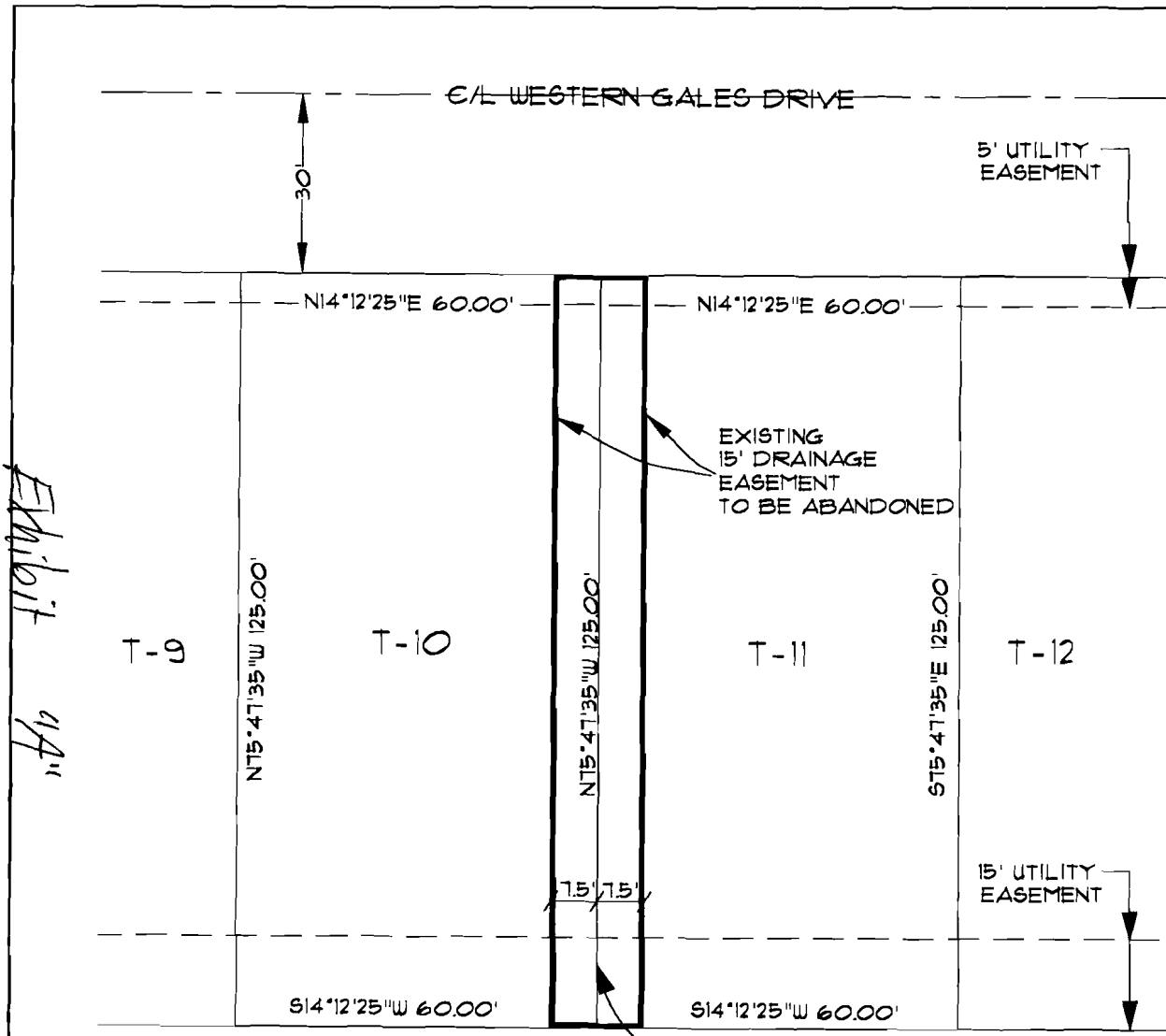
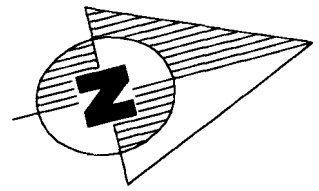


Exhibit 11A

DESCRIPTION

NORTH 7.5 FEET OF LOT T-10 TOGETHER WITH THE SOUTH 7.5 FEET OF LOT T-11, ACCORDING TO THE PLAT OF SAGE MEADOWS PHASE I-D, JONESBORO, ARKANSAS, CRAIGHEAD COUNTY ARKANSAS.

CONTAINING IN ALL 1,875 SQ. FT. OR 0.043 ACRES, MORE OR LESS.



(ASSUMED NORTH)



GRAPHIC SCALE
IN FEET

R-3 ZONING

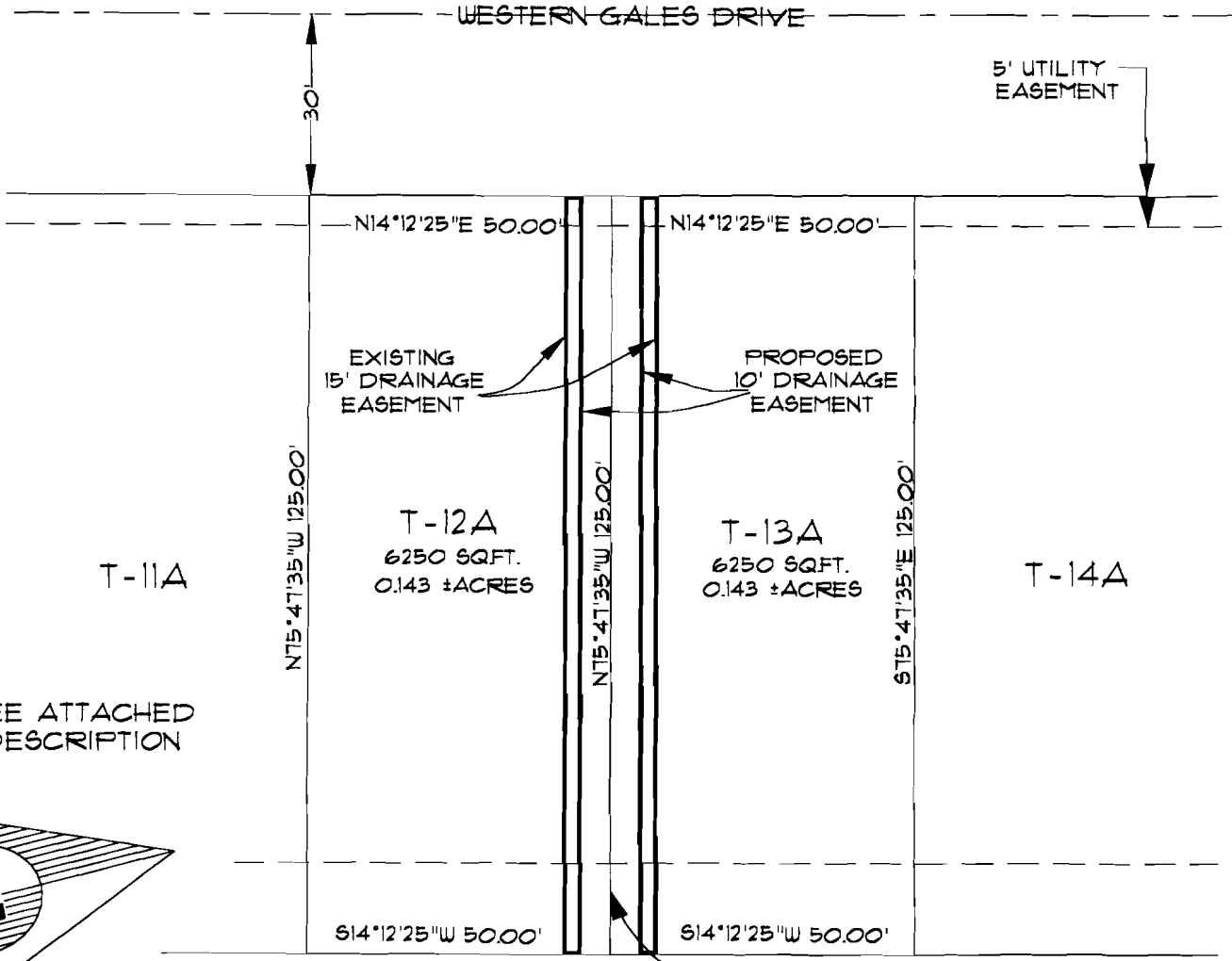
C/L EXISTING 15' DRAINAGE EASEMENT TO BE ABANDONED

ASSOCIATED ENGINEERING CO.
ENGINEERING AND LAND SURVEYING
1721 DAN AVENUE - JONESBORO, AR 72401
501-932-3594

EASEMENT ABANDONMENT SKETCH
SAGE MEADOWS - PHASE I-D
JONESBORO, ARKANSAS

DATE	BY

DRAWN: KL8/CAD	CHECKED: JMC	DATE: 05/15/97	SHEET 1 OF 1
SCALE: 1" = 30'	CADD FILE: 96113146	DWG#: 0415341.0025	



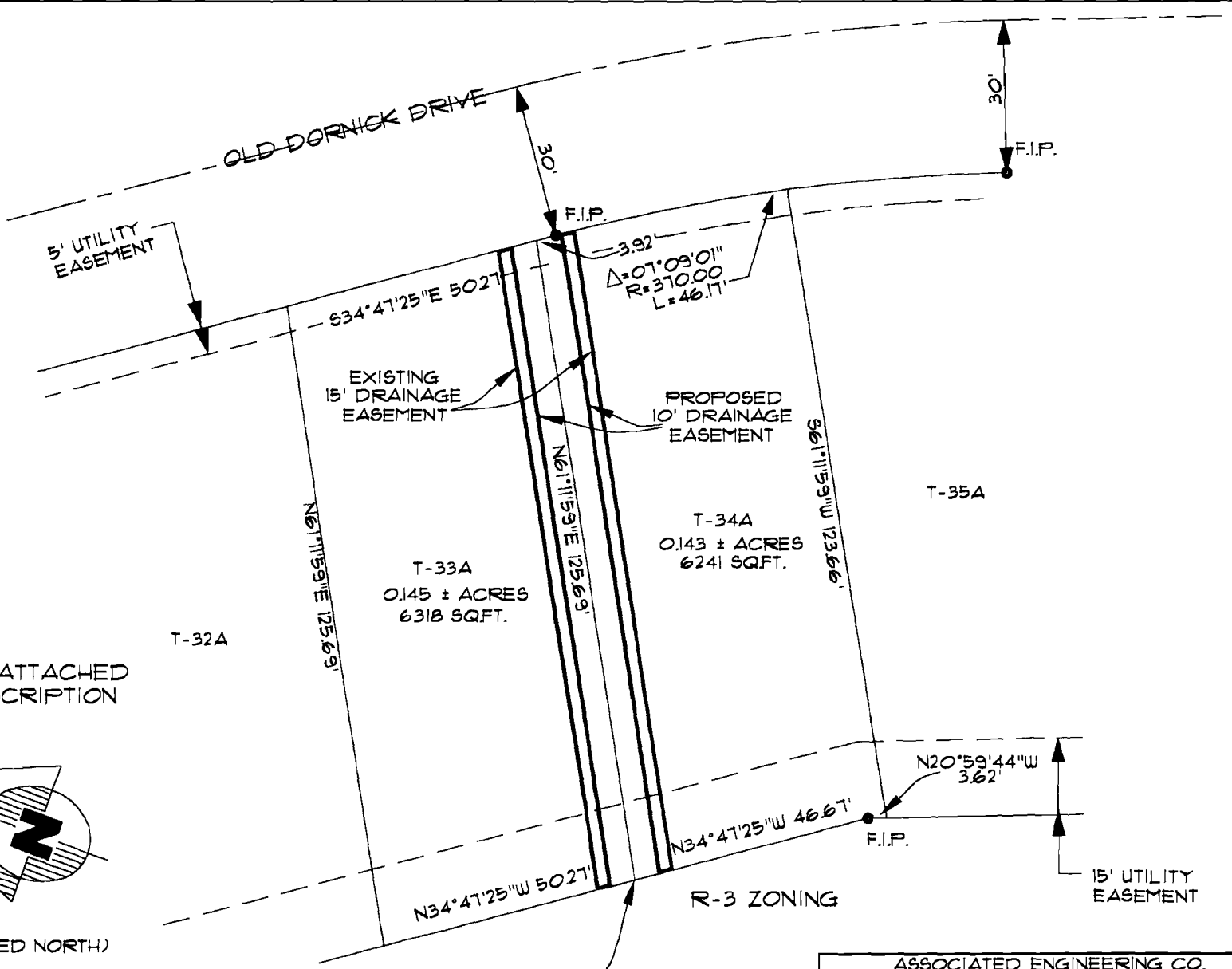
R-3 ZONING

ASSOCIATED ENGINEERING CO.
ENGINEERING AND LAND SURVEYING
1721 DAN AVENUE - JONESBORO, AR 72401
501-932-3594

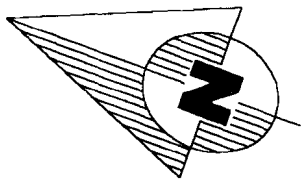
EASEMENT ABANDONMENT SKETCH
SAGE MEADOWS - PHASE I-D
JONESBORO, ARKANSAS

DRAWN: KLS/CAD	CHECKED: JMC	DATE: 04/15/97	SHEET
SCALE: 1" = 30'	CADD FILE: 96113146	DWG#: 0415341002B	1 OF 1

DATE	BY



NOTE: SEE ATTACHED LEGAL DESCRIPTION



(ASSUMED NORTH)



GRAPHIC SCALE
IN FEET

C/L EXISTING
15' DRAINAGE
EASEMENT

R-3 ZONING

ASSOCIATED ENGINEERING CO. ENGINEERING AND LAND SURVEYING 1721 DAN AVENUE - JONESBORO, AR 72401 501-932-3594			
EASEMENT ABANDONMENT SKETCH SAGE MEADOWS - PHASE I-D JONESBORO, ARKANSAS			
DRAWN: KLB/CAD SCALE: 1" = 30'	CHECKED: JMC CADD FILE: 96113147	DATE: 04/15/97 DWG#: 04153410026	SHEET 1 OF 1

DATE	BY

CMMsr:bd
May 21, 1997

BEFORE THE CITY COUNCIL
OF THE CITY OF JONESBORO, ARKANSAS

IN THE MATTER OF THE CLOSING
OF A PORTION OF A DRAINAGE
EASEMENT LOCATED IN SAGE
MEADOWS SUBDIVISION, PHASE 1-D,
TO THE CITY OF JONESBORO

AMENDED PETITION

Comes Sage Meadows Development, Inc., by and through its attorneys, Mooney Law Firm, and petitions the City Council of the City of Jonesboro, Arkansas, to abandon the drainage easements which are described as follows, to-wit:

The South 7.5 feet of Lot T-28, together with the North 7.5 feet of Lot T-29, according to the plat of Sage Meadows Phase 1-D, Jonesboro, Arkansas, Craighead County, Arkansas, containing in all 1,887 square feet or 0.043 acre, more or less;

and

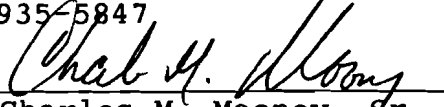
The North 7.5 feet of Lot T-10, together with the South 7.5 feet of Lot T-11, according to the plat of Sage Meadows Phase 1-D, Jonesboro, Arkansas, Craighead County, Arkansas, containing in all 1,875 square feet or 0.043 acre, more or less,

Page 2

Plats of said property showing the portion of the drainage easements to be abandoned are attached hereto as Exhibit "A".

MOONEY LAW FIRM
P. O. Box 1423
Jonesboro, Arkansas 72403
501-935-5847

By


Charles M. Mooney, Sr.
Arkansas Bar No. 61020
Attorney for Sage
Meadows Development