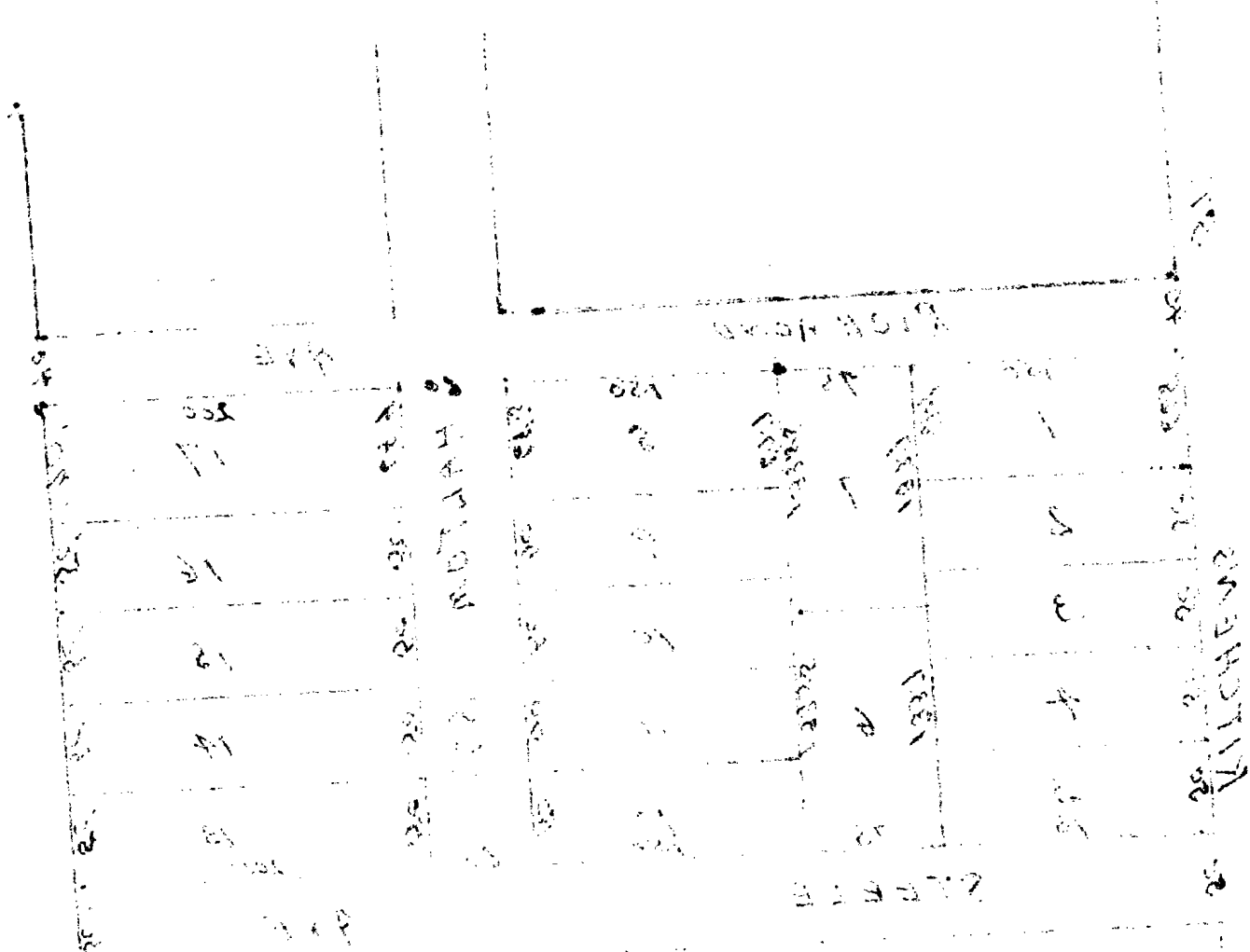


PLAT OF SLOAN'S SUBDIVISION OF BLOCK "A" OF SLOAN'S ADDITION TO THE CITY OF JONESBORO, ARKANSAS, as recorded in Deed Record 48, at Page 237 of the records of the Jonesboro District of Craighead County, Arkansas. Survey made September 25, 1947, by Ben Edkins, County Surveyor.

RECORDED IN DEED RECORD 48, PAGE 237

SE CORNER OF SECTION 17 NE 1/4 OF S19TH T4N R4E

INDEXED
 FILED
 JONESBORO, ARKANSAS
 DECEMBER 15, 1947
 COUNTY CLERK



CERTIFICATE OF RECORD
CERTIFIED COPY

STATE OF ARKANSAS, }
 County of Craighead. } ss.

Searcy Taylor

Circuit Court clerk and Ex-Officio Chancery Clerk and Recorder, within and for the State and County aforesaid, duly commissioned, qualified and acting do hereby certify that the foregoing instrument of writing is a true and correct and compared copy of the original instrument as the same appears of record

In Deed Record Book 48, at page 237

IN WITNESS WHEREOF I hereunto set my hand and affix the seal of the said court this 10th

day of September, 19 59.

SEARCY TAYLOR, Clerk
Frances Easton, D. C.

THIS INSTRUMENT WAS RECORDED AS SHOWN ON THIS PLAT AND THE ORIGINAL INSTRUMENT IS ON FILE IN THE OFFICE OF THE CLERK OF THE CIRCUIT COURT OF THE COUNTY OF CRAIGHEAD, ARKANSAS.