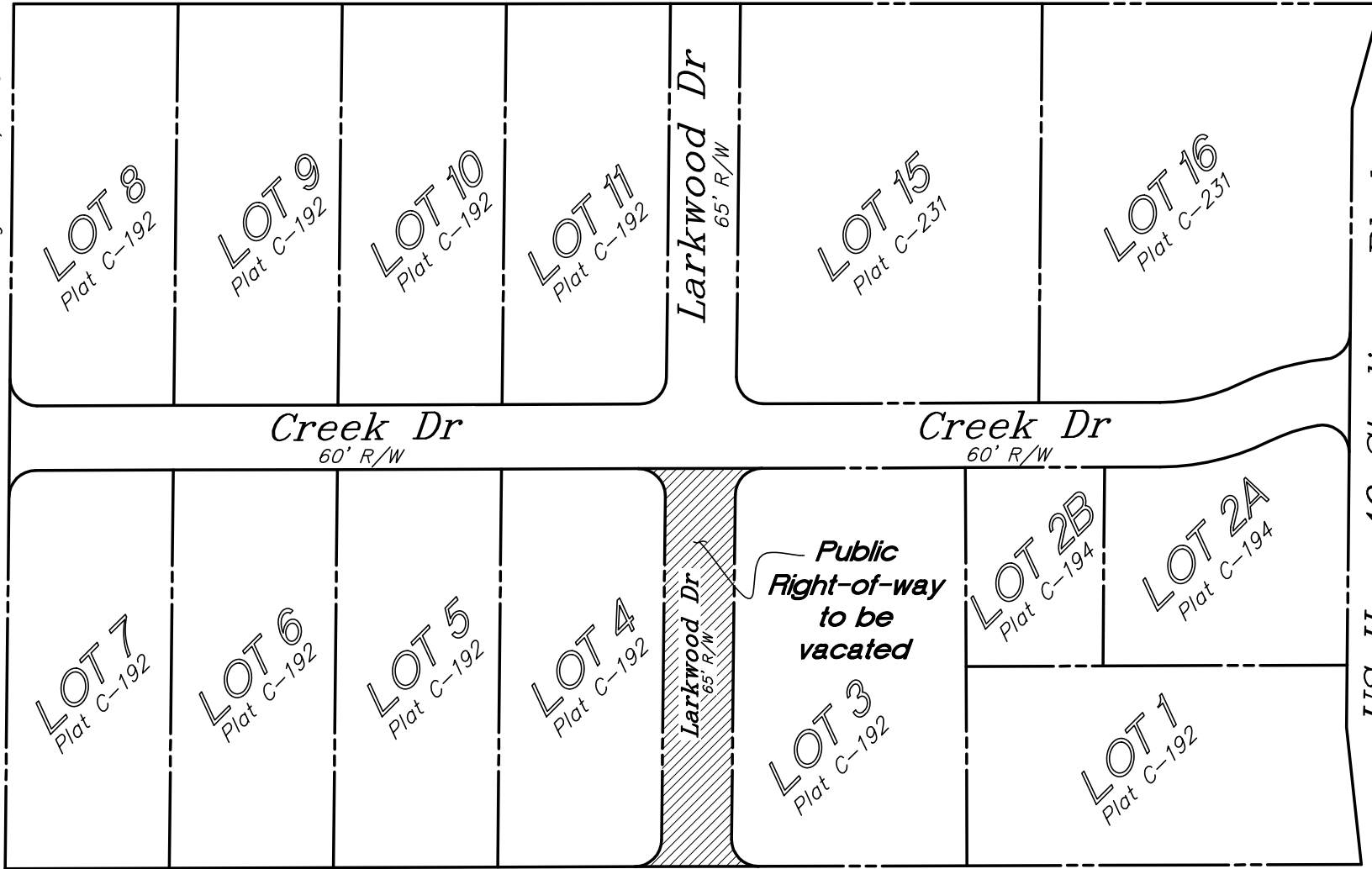


Creek Place, Jonesboro, AR according to Plats C-192, C-194 and C-231

Bittle St.

Platted as Sycamore St. as shown on Terrace Acres, a Subdivision of Blocks E,F,G and H of Sigler's College Addition dated August 23th, 1955



US Hwy 49 Stadium Blvd

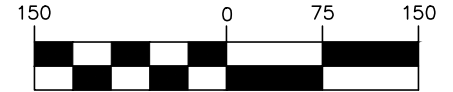
Variable width Public R/W per AHTD Job #10768



Forest Home Rd

Public Right-of-way as shown on Terrace Acres, a Subdivision of Blocks E,F,G and H of Sigler's College Addition dated August 23th, 1955

GRAPHIC SCALE



(IN FEET)

1 inch = 150 ft.

This exhibit does not purport to be a proposed tract split, replat or any other subdivision plat as may be defined by city, county, or state law. The land owner is encouraged to check with the local planning/development authorities for proper platting procedures before proceeding with this development.

JOB # PROJ#27328 DRAWING: 27328-Street-Vacation.dwg LAST SAVED BY: INNEKOV



Engineering Associates, Inc.

ENGINEERS • PLANNERS • SURVEYORS
LANDSCAPE ARCHITECTS • ENVIRONMENTAL SCIENTISTS

3/5/14	NKN	NKN	JDW	KMH
DATE	PLS	PM	DRW	CHK'R

3108 SW Regency Parkway, Suite 2 Phone PH: (479)273-9472
Bentonville, AR 72712 Fax FAX: (479)273-0844

1" = 150'

Exhibit "A"

Street Vacation Exhibit
Creek Place
Jonesboro Arkansas

DATE
3/6/14
8:52 AM
SHEET NO.
1 OF 1
Rev-0