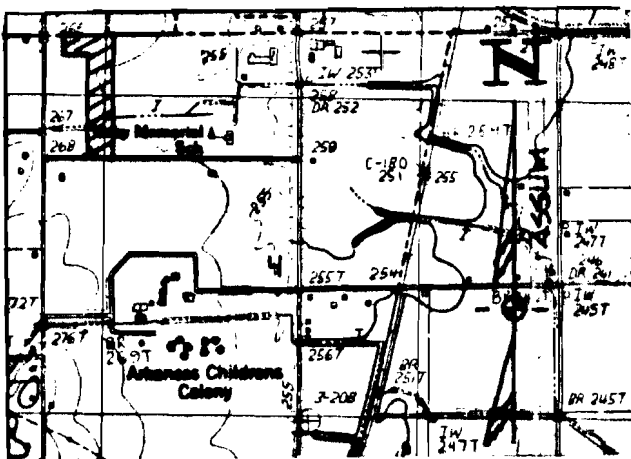


WE, being the owners of the following described tract of land do hereby request the re-zoning from Commercial C-3 to Residential R-2:

A part of the NW 1/4 NW 1/4 of Section 4, Township 13 North, Range 4 East, being more particularly described as follows; Begin at the Southwest Corner of the NW 1/4 NW 1/4 of Section 4 aforesaid; thence N89°24'E 435.66' to the point of beginning proper; thence N0°23'W 1164.17'; thence S89°31'W 222.57'; thence N0°29'W 150.0'; thence N89°31'E 522.83'; thence S0°23'E 1313.56'; thence S89°24'W 300.0' to the point of beginning proper, containing 9.815 acres and being subject to a public road R/W off and across the south side thereof.....

VICINITY MAP



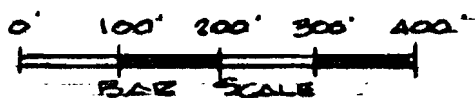
SCALE 1:24000

BY: FUTURE HOMES DEVELOPEMENT CO.

BY: *John White, Jr.*
John White, Jr.

By: *Ronnie White*
Ronnie White

By: *David Conrad*
David Conrad



HAYWOOD, KENWARD & ASSOCIATES, INC.

CIVIL ENGINEERS - SURVEYORS
603 SOUTHWEST DRIVE
JONESBORO, ARKANSAS 72401

By: *Clyde Kenward*

REZONING APPLICATION (C-3 to R-2)

FUTURE HOMES DEV. CO. JONESBORO, ARKANSAS	SCALE 1"=200'	DRAWN BY ck
--	------------------	----------------

Part NW NW of Section 4, T13N-R3E

DATE 3/4/86	APPROVED BY	DRAWING NUMBER 54-3
----------------	-------------	------------------------