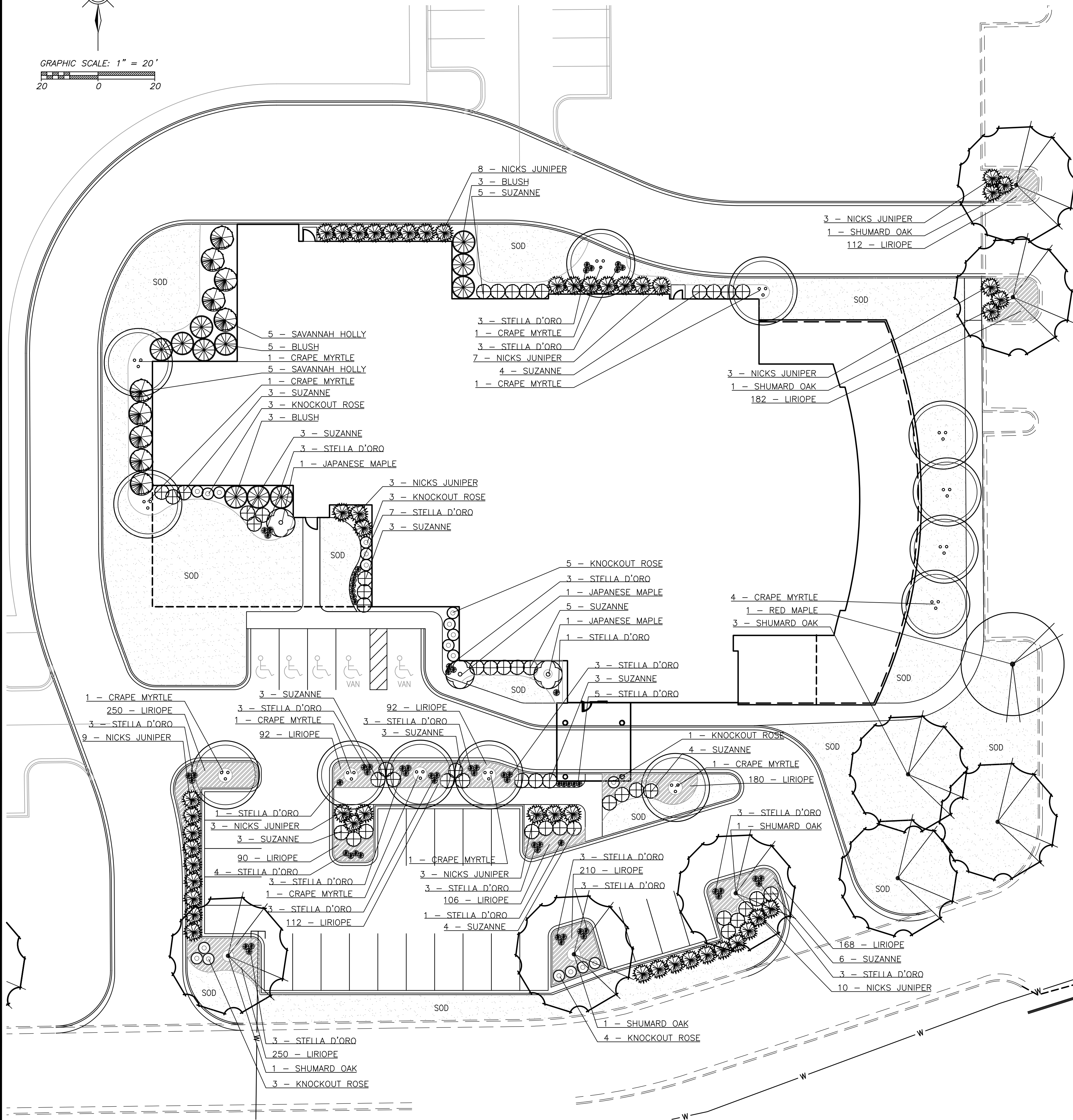


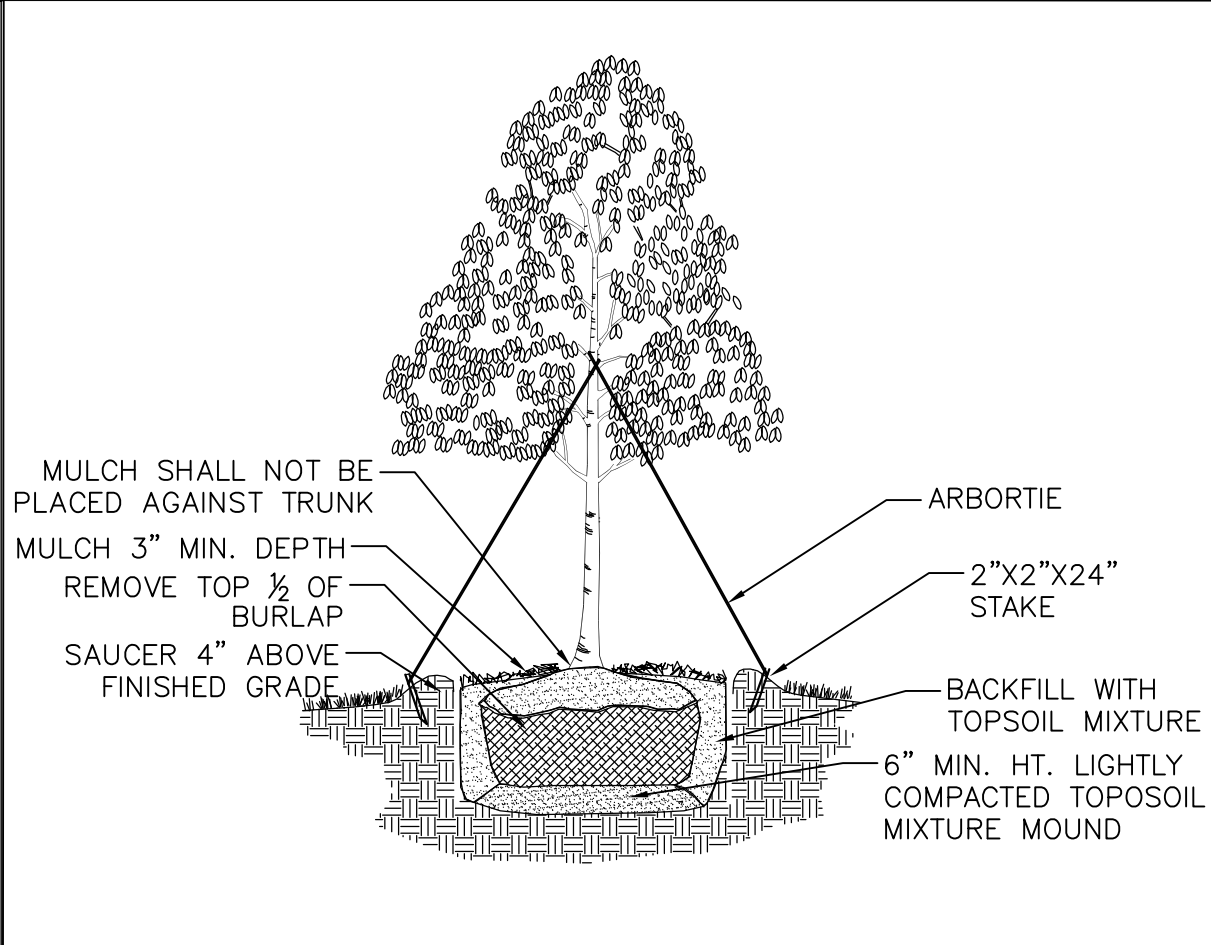
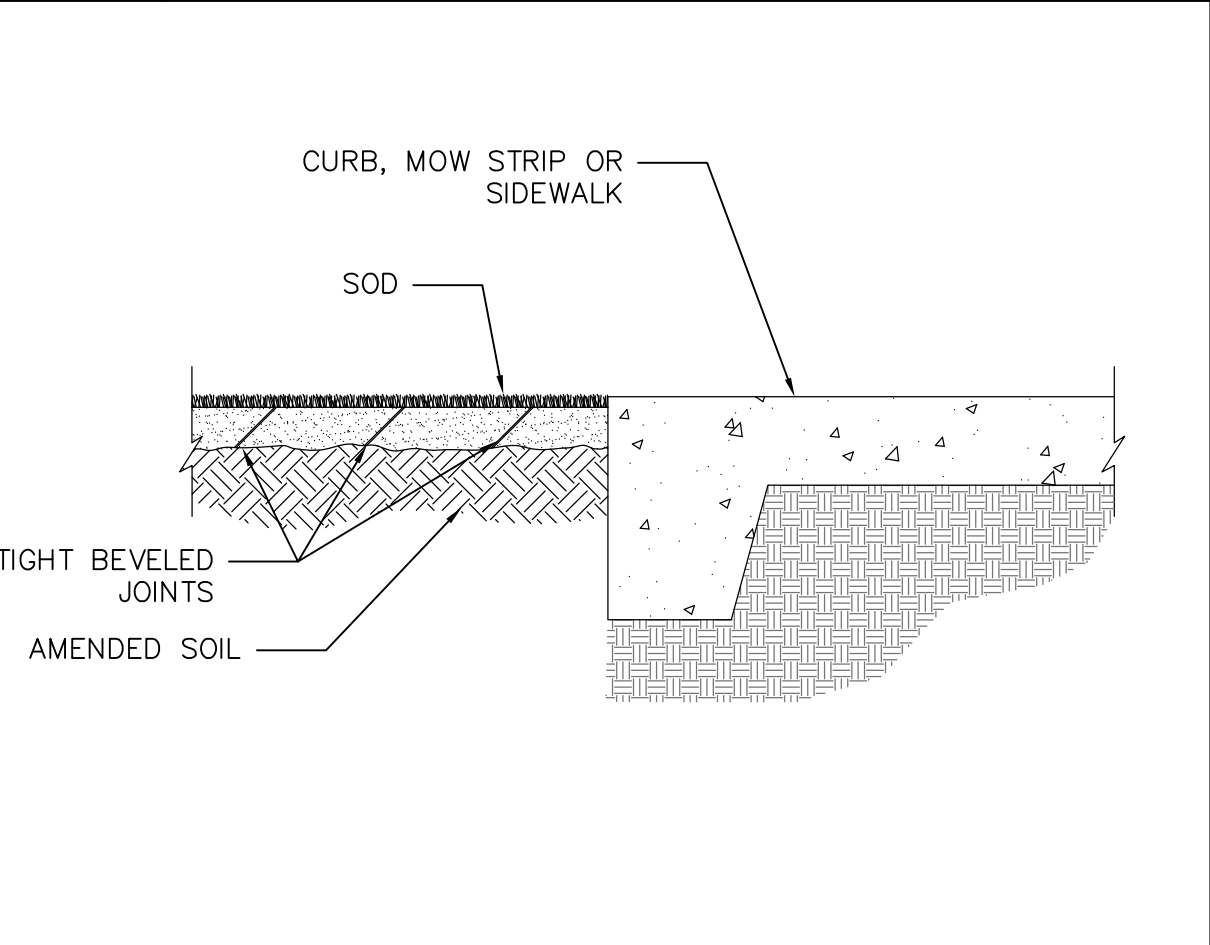
GRAPHIC SCALE: 1" = 20'



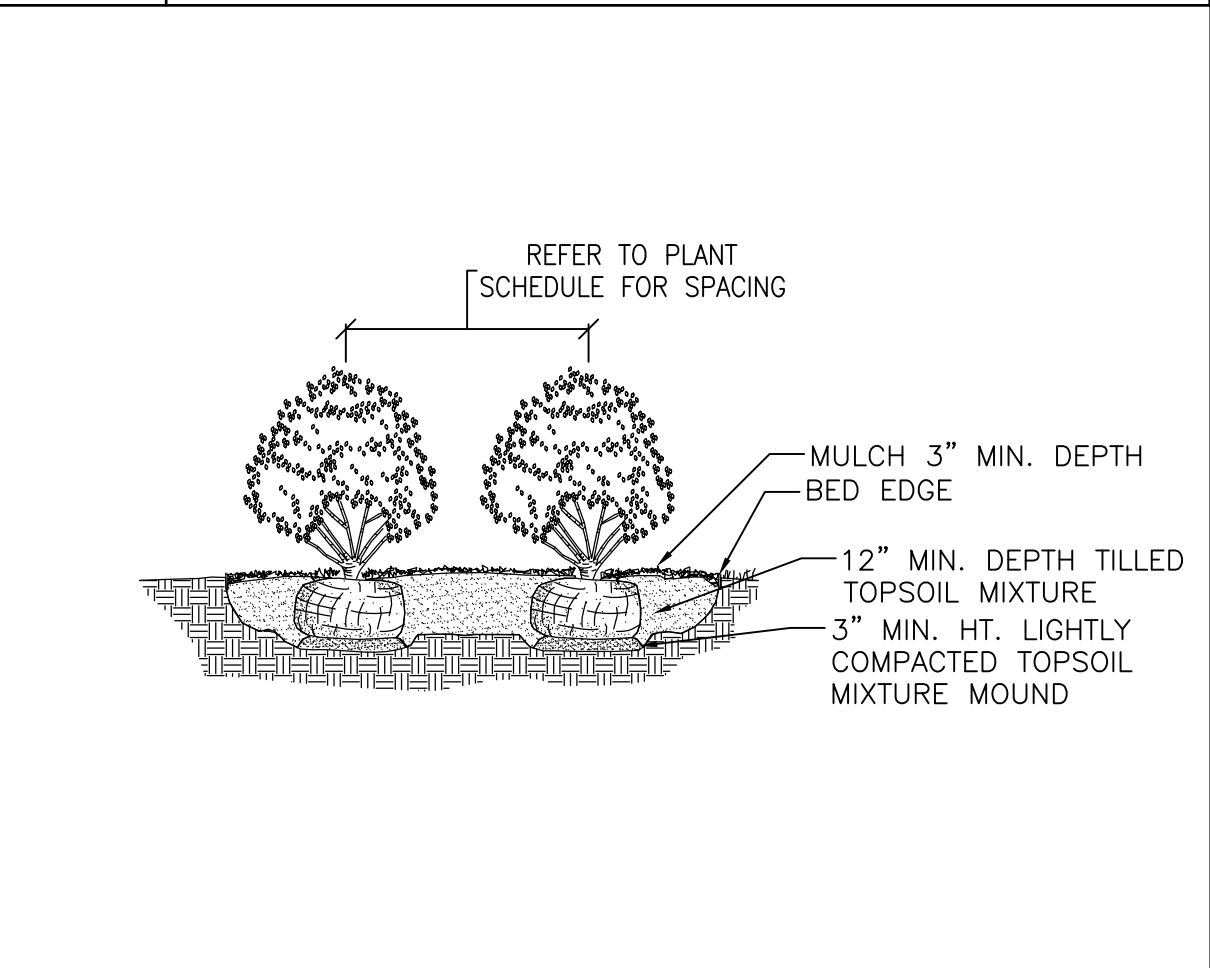
QTY.	COMMON NAME	BOTANICAL NAME	MIN. SIZE	SPACING	COND	COMMENTS
11	Blush	Loropetalum chinense 'Blush'	30" ht. & spr.	7" o.c.	cont.	
13	Crape Myrtle	Lagerstroemia indica Natchez	6' ht.	As Shown	B&B	3 Cane Minimum, Straight, Matching
3	Japanese Maple	Acer palmatum 'Dissectum Atropurpureum'	5' ht. & spr.	As Shown	B&B	
19	Knockout Rose	Rosa x 'Radcon'	18" ht.	5" o.c.	cont.	
1732	Liriope	Liriope muscari 'Gold Band'	9" ht. & 6" spr.	12" o.c.	cont.	
49	Nicks Juniper	Juniperus phitzeriana 'Nicks Compacta'	24" ht.	5" o.c.	cont.	
1	Red Maple	Acer rubrum 'October Glory'	3" cal.	As Shown	B&B	
10	Savannah Holly	Ilex x attenuata	2" cal.	As Shown	B&B	
8	Shumard Oak	Quercus shumardii	3" cal.	As Shown	B&B	
67	Stella D'oro	Hemerocallis spp.	12" ht.	18" o.c.	cont.	
49	Suzanne	Loropetalum chinense 'Suzanne'	18" ht. & spr.	4" o.c.	cont.	

NOTES:
 A. PLANT SIZES SHOWN ARE MINIMUMS. MEET ALL SIZE REQUIREMENTS LISTED. ALL PLANT MATERIAL AND CONTAINER SIZES SHALL CONFORM TO THE REQUIREMENTS SET BY THE AMERICAN STANDARDS FOR NURSERY STOCK.
 B. SYMBOL SIZES MATCH LISTED ON CENTER (O.C.) SPACING. SYMBOLS SHOWN OVERLAPPING ARE CLOSER THAN O.C. SPACING AND SYMBOLS NOT TOUCHING ARE SPACED FARTHER THAN THE LISTED O.C.
 C. VERIFY ALL QUANTITIES AND AVAILABILITY OF PLANTS AND MATERIALS SHOWN ON THE PLAN AND SCHEDULE PRIOR TO SUBMITTING A BID.
 D. TYPE OF SEASONAL COLOR AS SELECTED BY OWNER. SEASONAL COLOR QUANTITIES REFER TO SQUARE FOOTAGE. SPACE AS REQUIRED PER SPECIES.
 E. TUBERS WILL BE ACCEPTED AT A SPACING OF 9" O.C. (QTY. 75) GALLON SIZE PLANTS WILL BE ACCEPTED AT A SPACING OF 12" O.C. (QTY. 56).

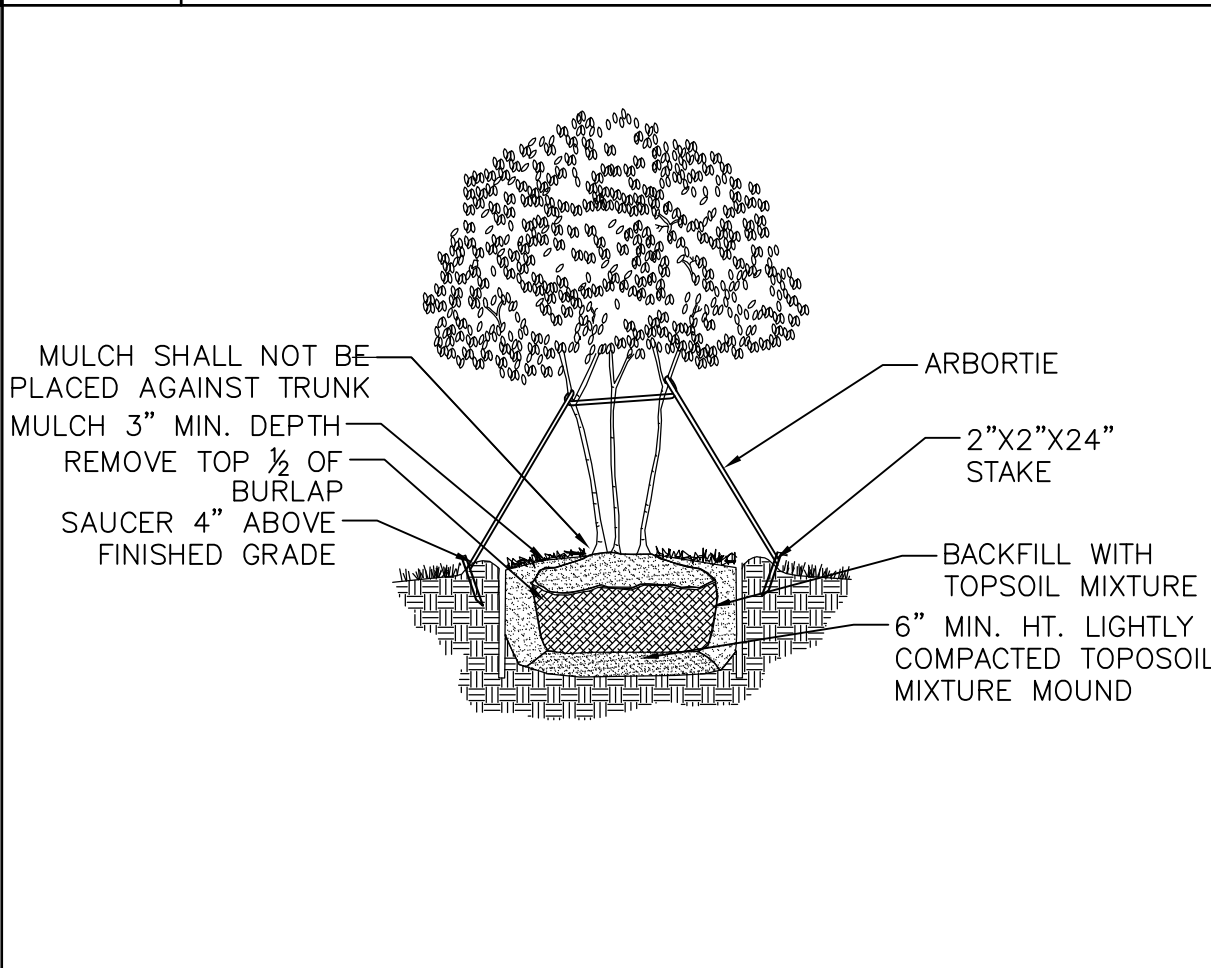
A3 PLANT SCHEDULE



B3 SOD INSTALLATION DETAIL



B4 DECIDUOUS TREE PLANTING



C3 SHRUB PLANTING



C4 MULTI-TRUNK TREE PLANTING



THE DOCUMENT IS THE PROPERTY OF NEA BAPTIST HEALTH SYSTEM, INC. AND IS TO BE USED ONLY FOR THE PROJECT AND SITE SPECIFICALLY IDENTIFIED HEREIN. ANY REUSE OR MODIFICATION OF THIS DOCUMENT WITHOUT THE WRITTEN CONSENT OF NEA BAPTIST HEALTH SYSTEM, INC. IS STRICTLY PROHIBITED. THE USER SHALL BE RESPONSIBLE FOR OBTAINING ALL NECESSARY PERMITS AND APPROVALS FROM THE APPROPRIATE AGENCIES.

ASKEW HARDEN HARTWELL & ASSOCIATES, INC.
 MEMPHIS, TN 38117-2404
 HARRISBURG, MS 39228-2108
 WWW.A2H.COM

SEAL

NEA BAPTIST HEALTH SYSTEM

JONESBORO, ARKANSAS

REVISIONS

NO.	DATE	DESCRIPTION

PROJECT NO. 08390.01
 DATE: 02.11.11
 DRAWN: MMN CHECKED: APR
 SHEET TITLE: PLANTING PLAN
 SHEET NO. L1.0