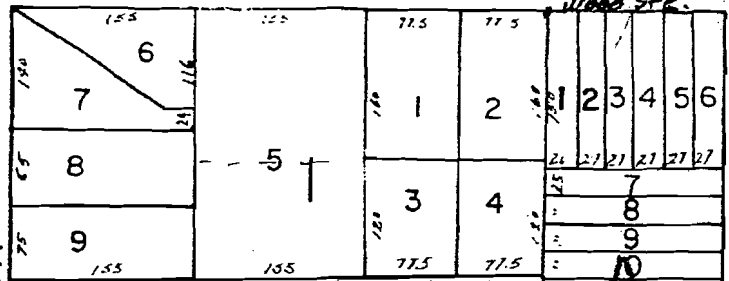
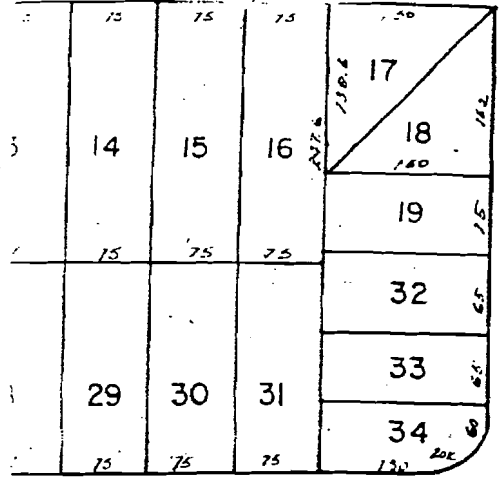


9
149.B

220

625

HIGHLAND

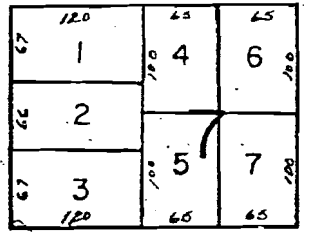


HAMPTON

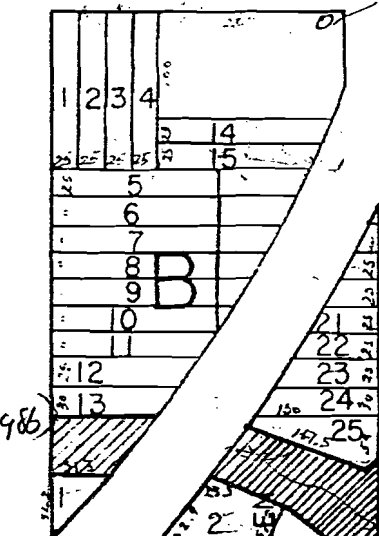
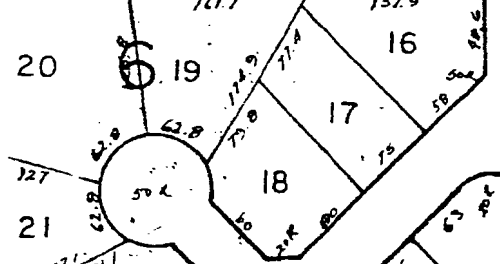
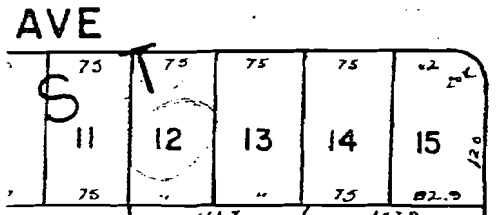
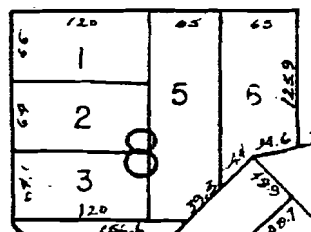
BELMONT

ST. CLOSED

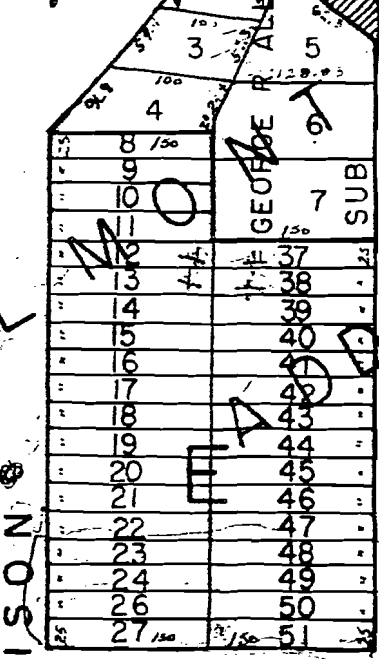
Abandoned by Ord. #2180 (last 175 ft)



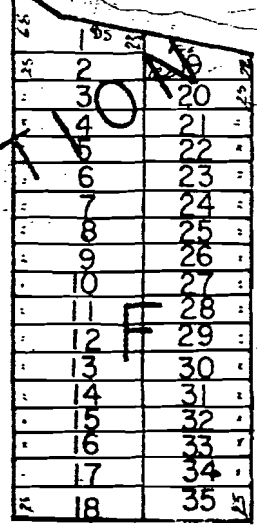
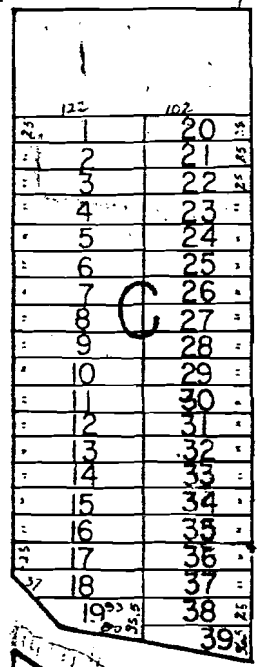
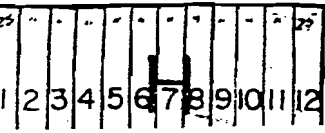
CONCORD



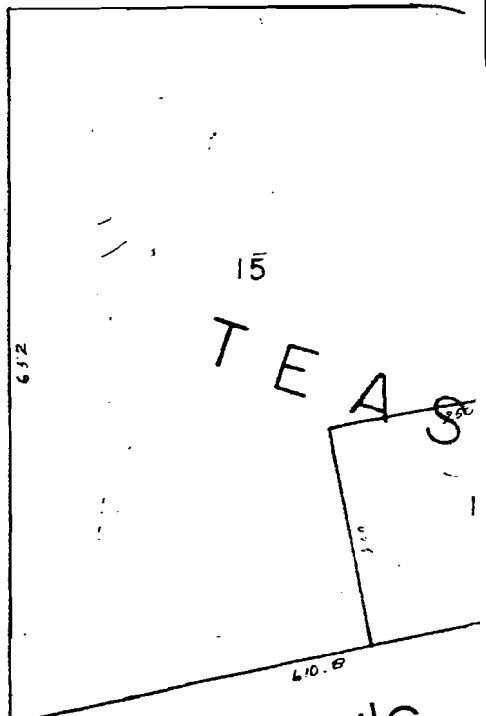
F.P.



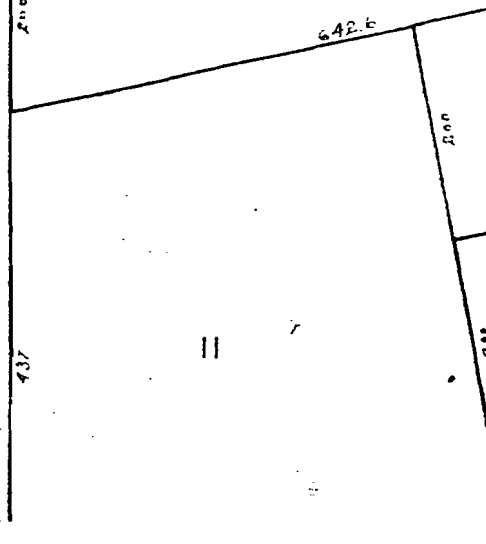
MADISON

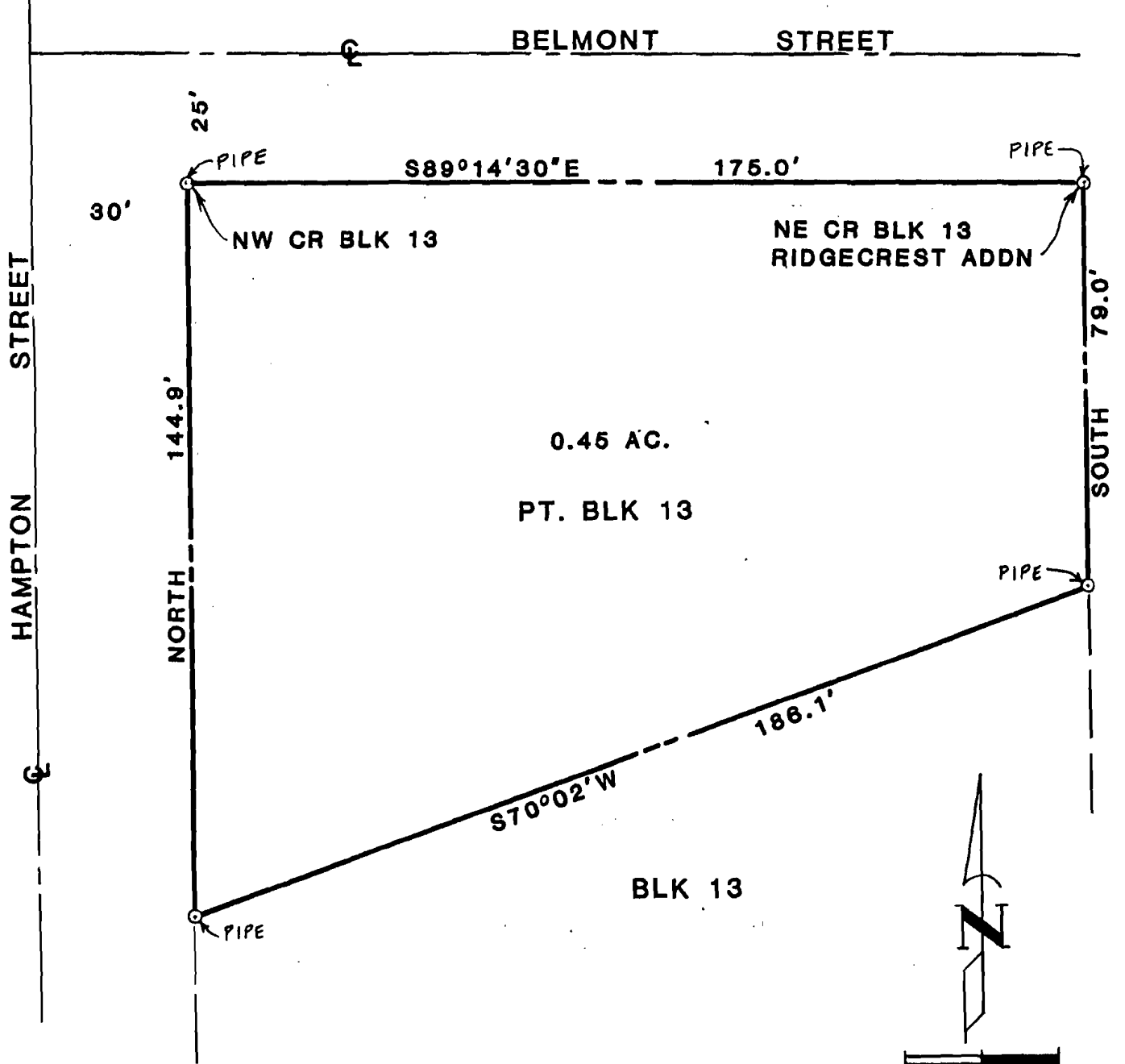


ROSE



CRAFTON'S





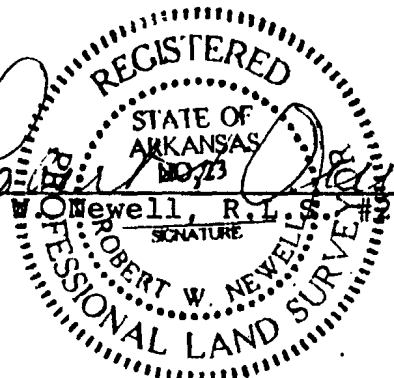
LEGAL DESCRIPTION:

A part of Block 13 of Ridgecrest Addition, Jonesboro, Arkansas as recorded in Book 48, Page 243 in the office of the Circuit Court Clerk and Ex-Officio Recorder, Craighead County, Jonesboro, Arkansas, more particularly described as follows: Begin at the Northeast corner of Block 13, Ridgecrest Addition; then run South 79.0 feet; then run South 70°02' West 186.1 feet; then run North 144.9 feet; then run South 89°14'30" East 175.0 feet to the point of beginning, containing 0.45 acres.

SURVEYOR'S CERTIFICATION:

I hereby certify that the plat shown and described hereon is the result of a survey made in May, 1989, that it is a true and accurate survey and the monuments were found or set as noted. Owner to verify applicable codes relative to building set-backs and possible utility easements, etc.

By Robert W. Newell
 Robert W. Newell, R.L.S. #23
 PROFESSIONAL LAND SURVEYOR



5/15/89
 Date

J M N	JONESBORO MILLER NEWELL	● Engineers ● Surveyors JONESBORO, ARKANSAS
	PROPERTY LINE SURVEY OF PART BLOCK 13, RIDGECREST ADDITION FOR MR. FRANK MACON JONESBORO, ARKANSAS	
JOB NO. 83-1		DATE 5-15-89

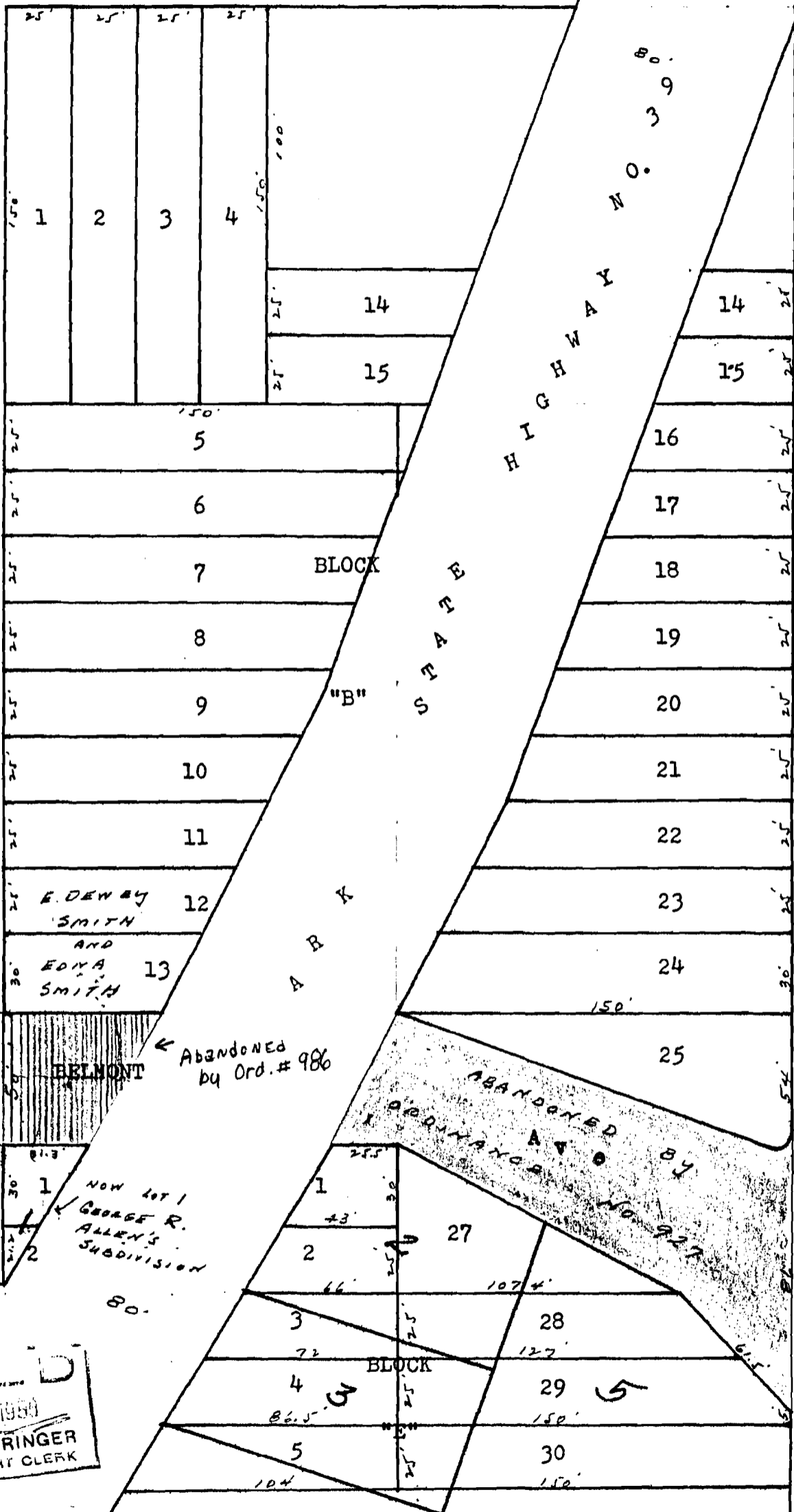
HIGHLAND DRIVE

MADISON

S FREEE

MAIN

S FREEE



PLAT OF BLOCK "B" AND PART OF BLOCK "E" OF BELMONT ADDITION TO CITY OF JONESBORO, ARKANSAS SHOWING HIGHWAY NO. 39, THAT PART OF BLOCK "E" BEING NOW PART OF GEORGE R. ALLEN'S SUBDIVISION.

APR 20 1959
PHYLLIS STRINGER
CITY & COURT CLERK