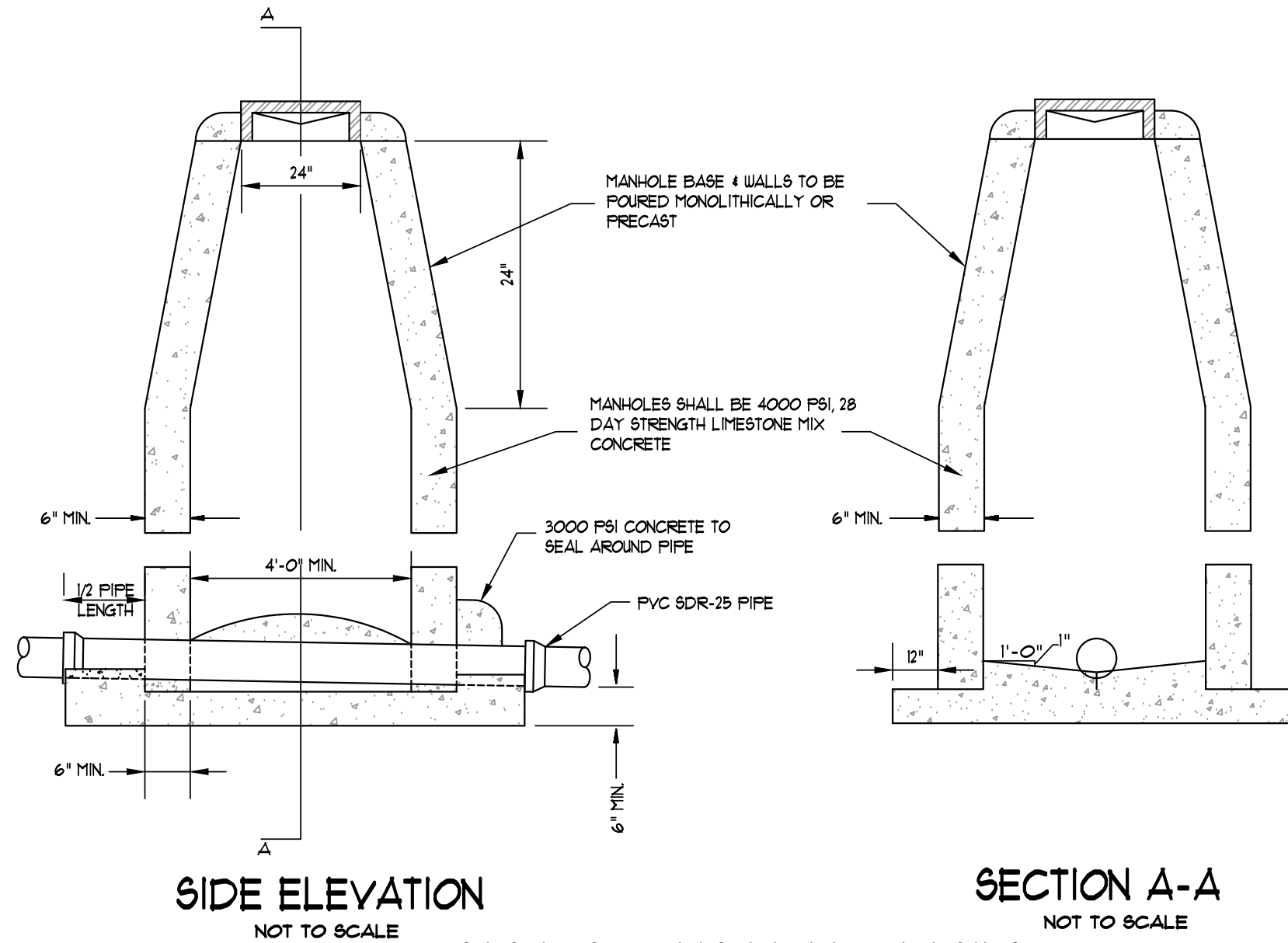
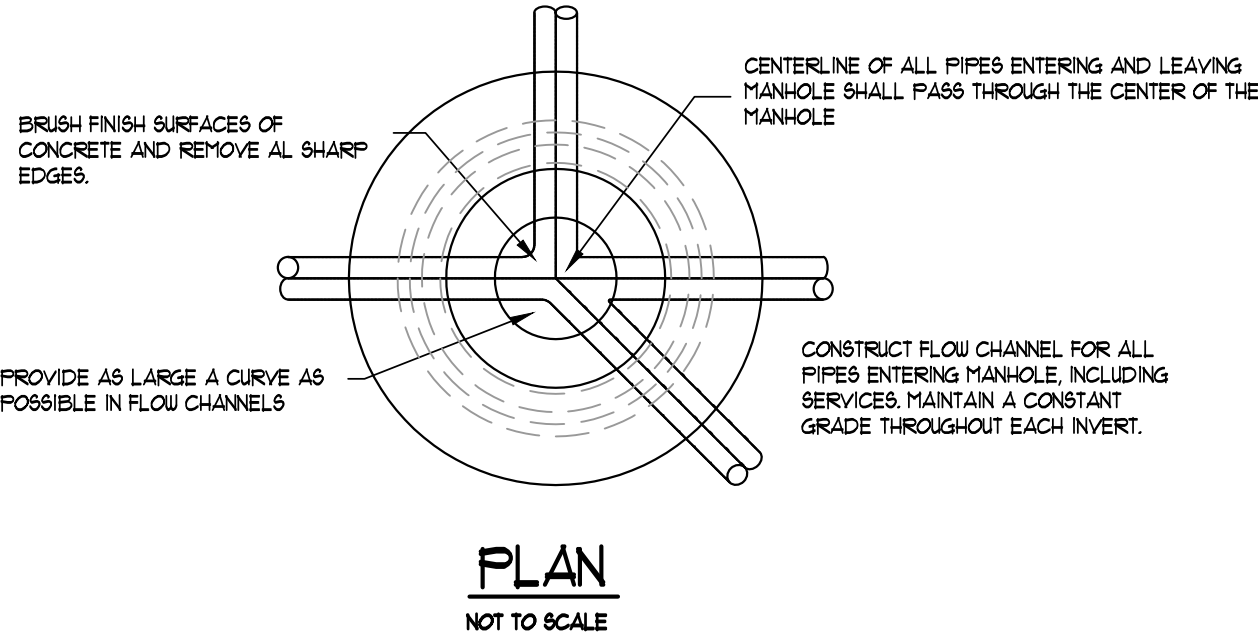


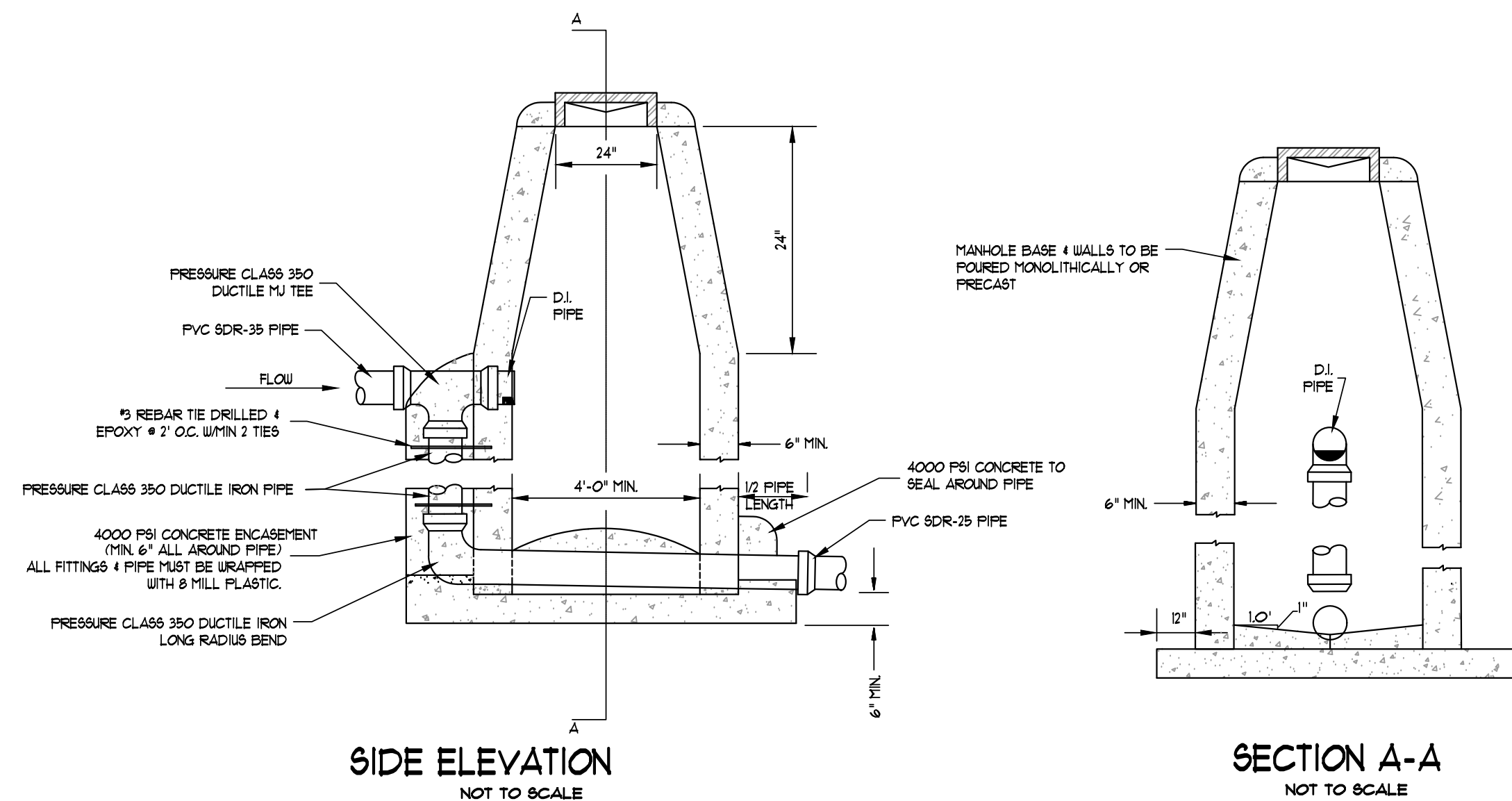
**NOTES TYPICAL TO ALL MANHOLES**

1. MANHOLE BASES TO BE 4000 PSI, 28 DAY STRENGTH LESTONE MIX CONCRETE ON SUB-GRADE OR ON COMPACTED SELECT FILL MATERIAL AS AUTHORIZED. UNDISTURBED
2. MANHOLE SIDEWALL MATERIAL TO BE CONCRETE IN ACCORDANCE WITH PROPOSAL FORM REQUIREMENTS.
3. SET MANHOLE TOPS AS FOLLOWS:
  - a. 4" I.D. FOR SEWER SIZES 6" THRU 24"
  - b. 5" I.D. FOR SEWER SIZES 24" THRU 30"
  - c. 6" I.D. FOR SEWER SIZES 36" THRU 42"
4. MANHOLE FRAMES SHALL HAVE MIN. OPENING OF 22" DIA.
  - a. IN STREETS, ROADS, HIGHWAYS, AND OTHER PAVED AREAS. FLUSH WITH FINISHED PAVING GRADE.
  - b. UNDEVELOPED AREAS, SUCH AS FIELDS, WOODS, ETC.: 6" ABOVE GROUND.
  - c. OTHER AREAS: 6" ABOVE GROUND.



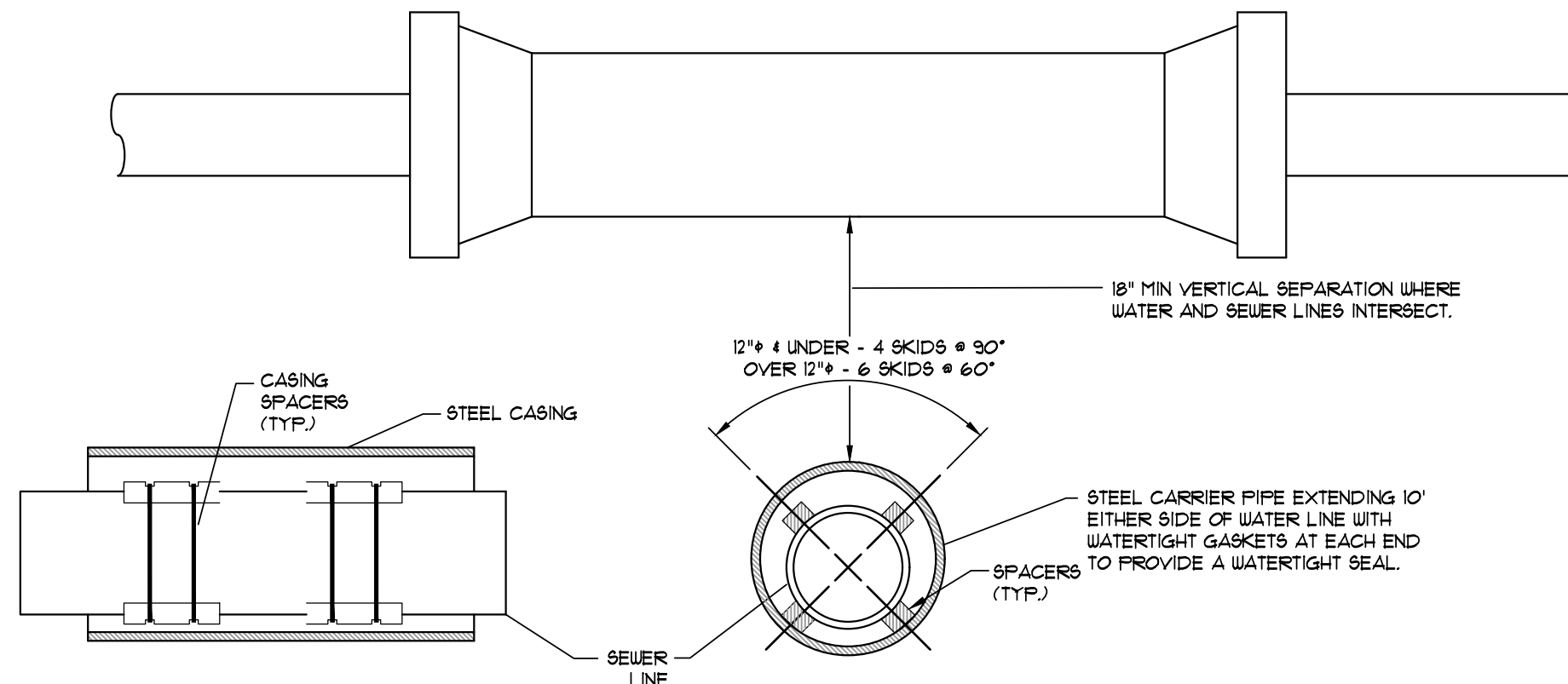
NOTE: MANHOLES SHALL BE PRECAST W/ NEOPRENE GASKETS AS APPROVED BY ENGINEER AND/OR UTILITY COMPANY.

**STANDARD MANHOLE DETAILS**



**DROP MANHOLE DETAILS**

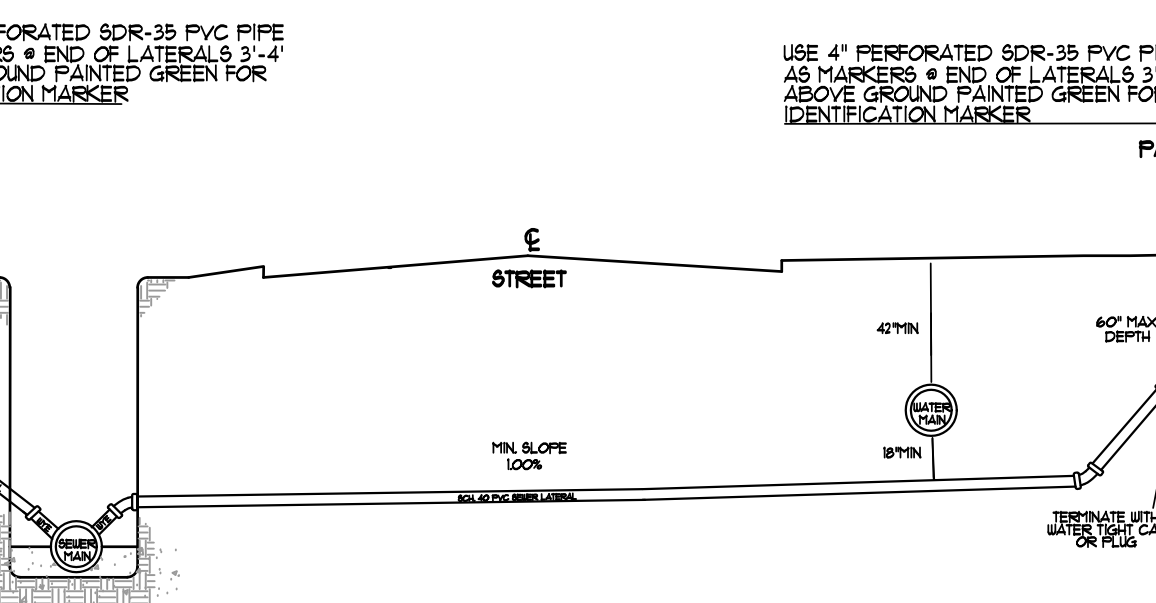
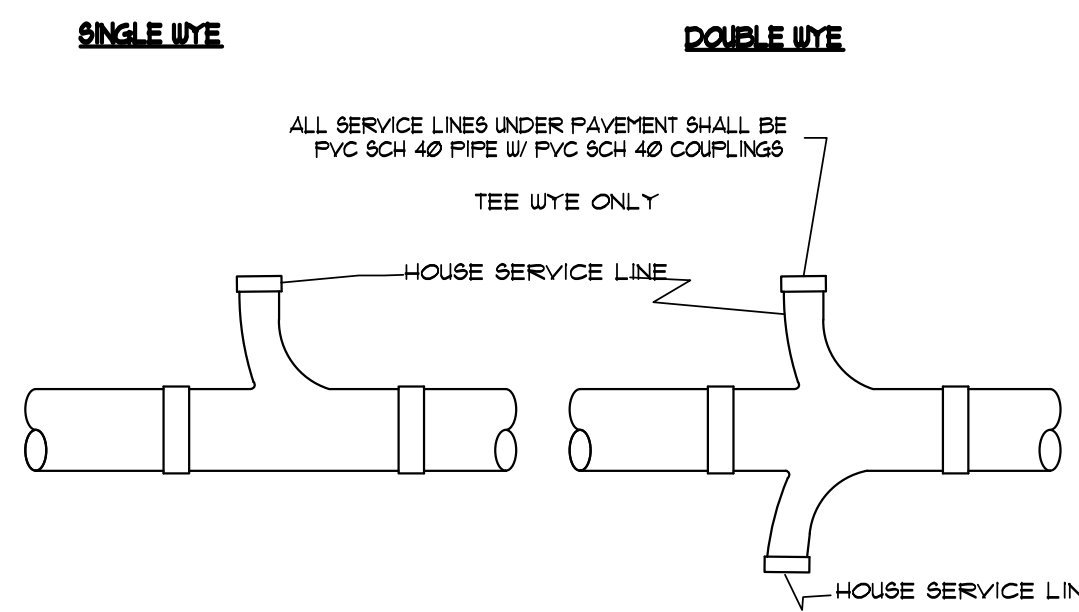
NOTE: WHEN 18" VERTICAL SEPARATION CANNOT BE MAINTAINED, JOINTS SHALL BE LOCATED SUCH THAT THEY ARE EQUAL DISTANCE BEFORE AND AFTER CROSSING.



CARRIER PIPE	CASING PIPE
4"	8"
6"	12"
8"	16"
10"	20"
12"	24"
16"	32"
18"	36"
20"	40"
24"	48"

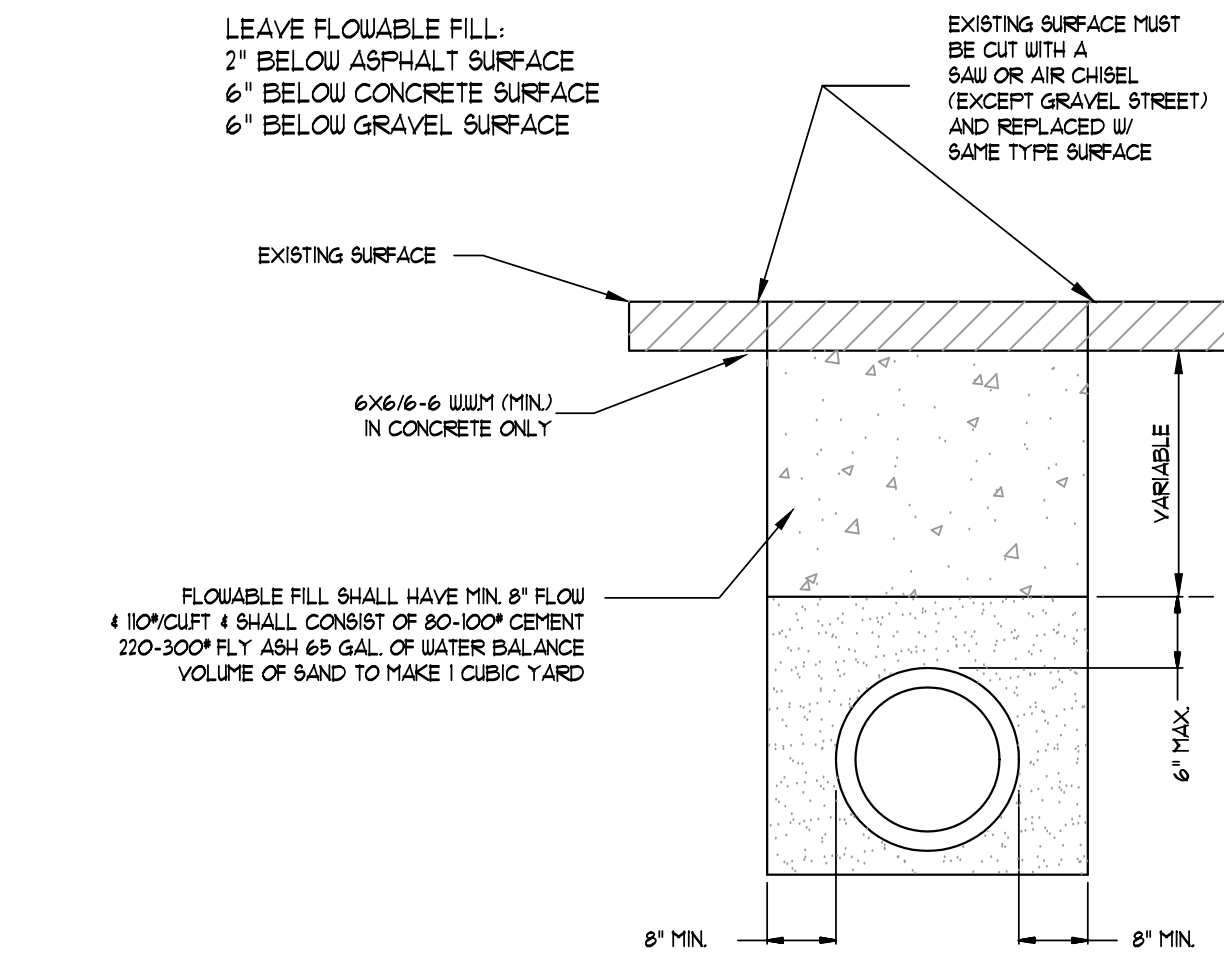
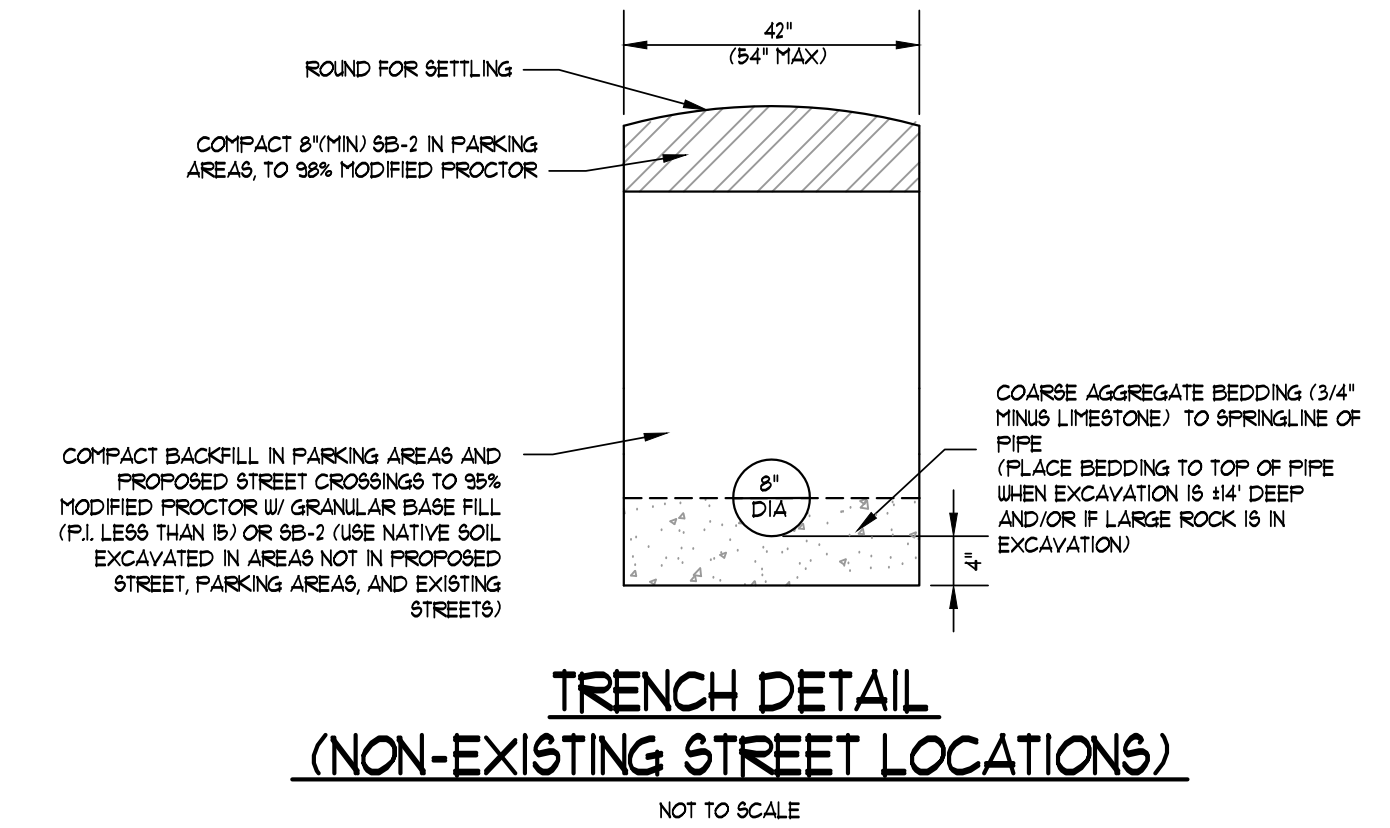
VERIFY CASING PIPE SIZE WITH CASING INSULATORS MFG.

**SEWER CROSSING DETAIL WHERE ENCASEMENT REQUIRED**  
NOT TO SCALE

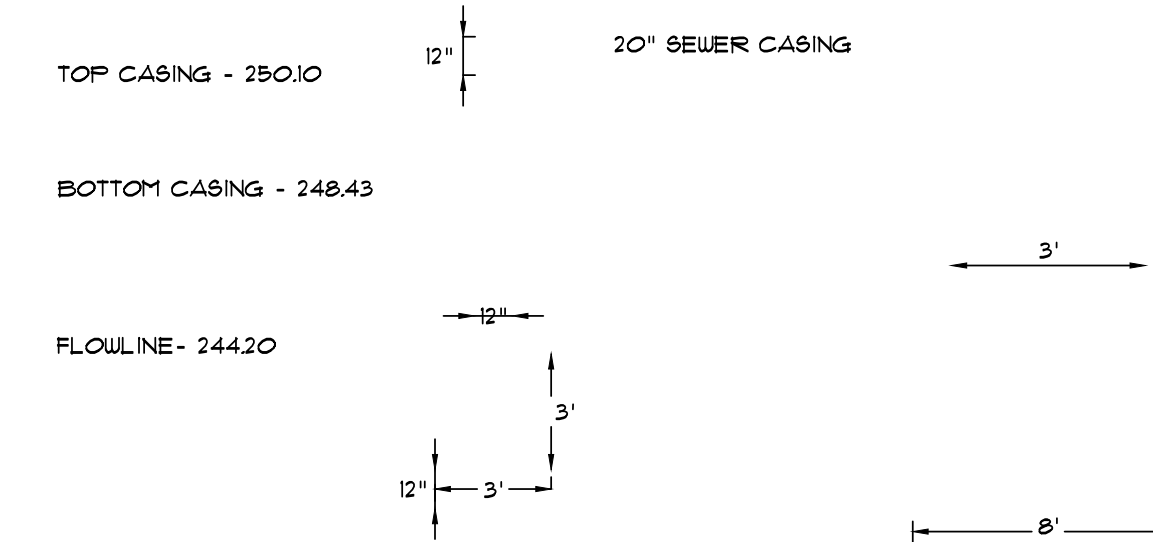


**SEWER LATERAL STUBOUT PERMITS REQUIRED BEFORE INSTALLATION**  
USE SAME CONFIGURATION FOR MANHOLE STUBOUTS

- NOTE: 1. COARSE AGGREGATE SHALL BE MECHANICALLY TAMPED WHEN USED.
2. PIPE IN TRENCH SHALL BE PLACED ON NO LESS THAN 4" OF 3/4" MINUS LIMESTONE. ALL OVER EXCAVATION SHALL BE COMPACTED BACK TO GRADE W/ BEDDING MATERIAL.
3. PVC PIPE SHALL BE SDR-25 AND INSTALLED IN ACCORDANCE WITH UNI-BELL PVC PIPE ASSOCIATION'S RECOMMENDATIONS FOR CONSTRUCTION.



- NOTE: (1) CONTRACTOR SHALL OBTAIN A STREET CROSSING PERMIT FROM THE CITY OF JONESBORO PRIOR TO CUTTING STREET.
- (2) EXCAVATED MATERIAL SHALL BE REMOVED AND DISPOSED OF BY THE CONTRACTOR.
- (3) THIS REPAIR DETAIL IS REQUIRED FOR ALL EXCAVATION WITHIN 5' OF PAVED EDGE AND ALL TRANSVERSE EXCAVATIONS TO EXTEND 3' BEYOND PAVED EDGE.

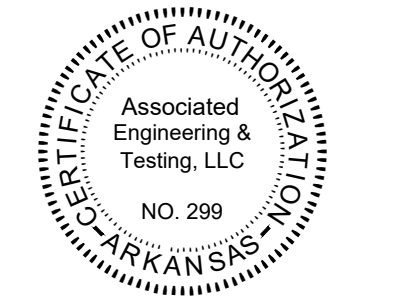
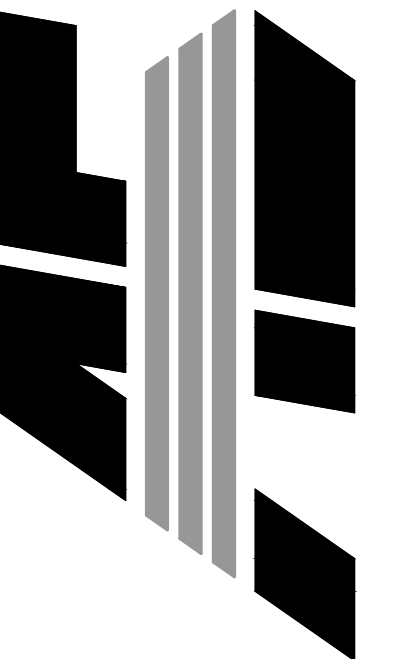


- NOTE: 1. CONCRETE PIERS SHALL BE INSTALLED IF CASING LENGTH IS LESS THAN 10' INTO DITCH BANK OR IN ORDER TO STABILIZE CROSSING.
2. USE IF CONCRETE PIERS TO BE DETERMINED BY PROJECT ENGINEER AND CUL.
3. PLACE 15 BARS AT 12" O/C BOTH WAYS ON EACH FACE OF PIER. PLACE 15 BARS AT 12" O/C IN FOOTING.

**AERIAL PIPE CROSSING - PEIRS**  
NOT TO SCALE

**GREENSBOROUGH VILLAGE**  
RESIDENTIAL - PHASE 1  
CANERA DRIVE  
JONESBORO, ARKANSAS

**ASSOCIATED ENGINEERING, LLC**  
CIVIL ENGINEERING • LAND SURVEYING  
LAND PLANNING  
103 SOUTH CHURCH STREET • P.O. BOX 1462  
JONESBORO, AR 72403  
PH: 870-932-3594 • FAX: 870-935-1263



NO.	DESCRIPTION	DATE

**SEWER DETAILS**

DATE: 07/29/2022      DRAIN: CCH  
 CADD FILE: 22120-SSWD-SDR-PP      CHECKED: JME  
 DWS: 0414091.X000      SHEET  
 SCALE: AS SHOWN      C015