


### OWNER'S CERTIFICATION

I, the undersigned, being the owner of the above-described land, hereby certify that the plat is a true and correct representation of the same and that the same is in conformity with the provisions of the Act to Regulate the Platting of Land in Arkansas, Chapter 221, Acts of 1909, and the amendments thereto.

\_\_\_\_\_  
 Date: \_\_\_\_\_

### SURVEYOR'S CERTIFICATION

I, the undersigned, being a duly licensed and sworn Surveyor of the State of Arkansas, do hereby certify that the plat is a true and correct representation of the same and that the same is in conformity with the provisions of the Act to Regulate the Platting of Land in Arkansas, Chapter 221, Acts of 1909, and the amendments thereto.

  
 David L. Stewart  
 Surveyor  
 State of Arkansas

### SURVEYOR'S NOTES

This plat was prepared for the plat of a public school site. The boundaries shown on this plat are based on a survey conducted by me on [date] and are shown in [color]. The boundaries shown on this plat are shown in [color].

### SURVEYOR'S NOTES

This plat was prepared for the plat of a public school site. The boundaries shown on this plat are based on a survey conducted by me on [date] and are shown in [color]. The boundaries shown on this plat are shown in [color].

### DESCRIPTION

The lot is bounded on the north by the [line description], on the east by [line description], on the south by [line description], and on the west by [line description]. The area is [acreage].

### LEGEND

- Boundary Line
- Easement Line
- Other Easement Line
- Proposed Easement Line

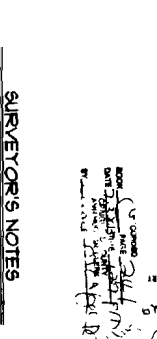
### VICINITY SKETCH

SITE



### GRAPHIC SCALE

Scale: 1" = 100'



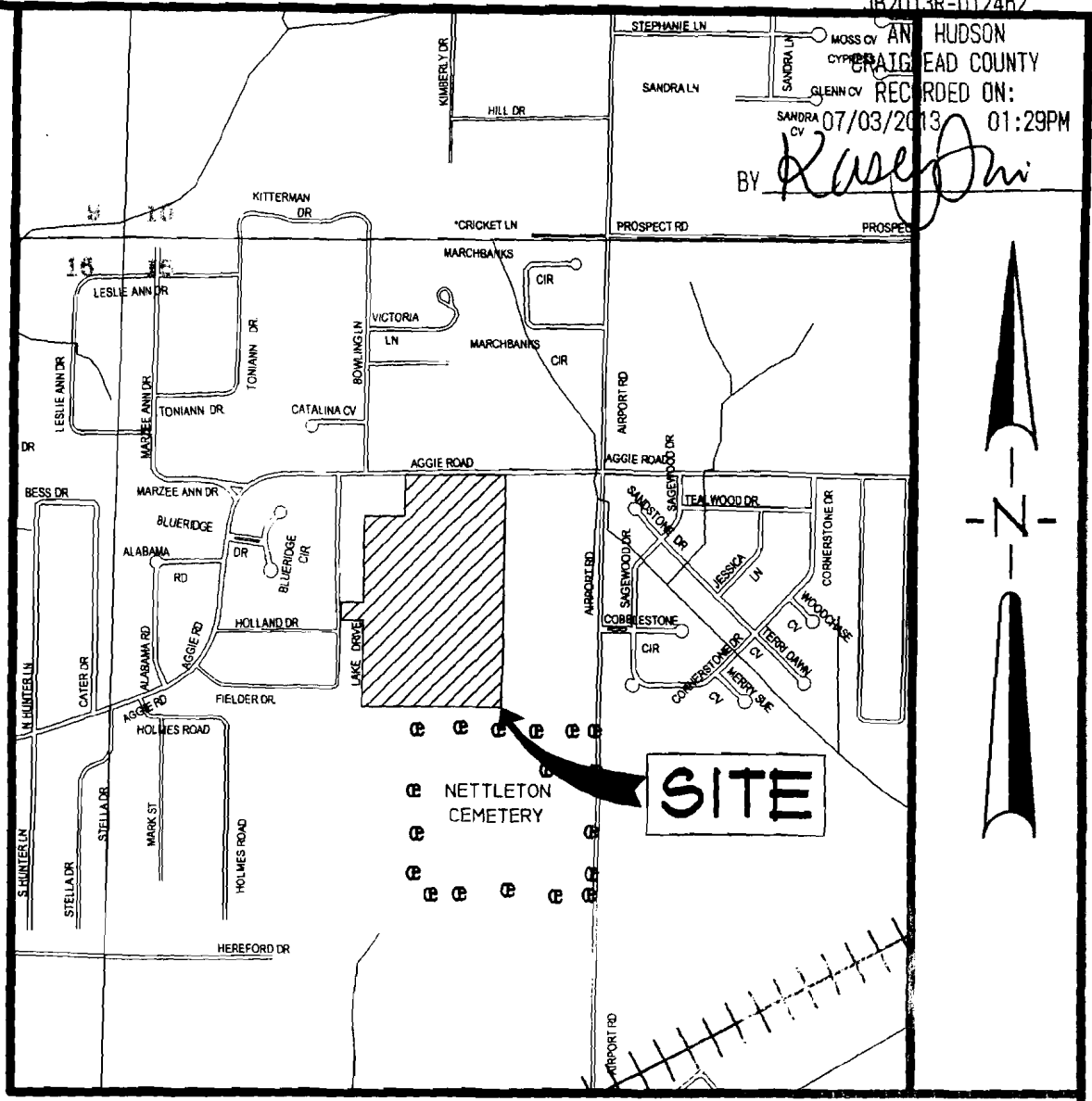
NO.	CLASS.	REMARKS	DATE
1			
2			
3			
4			
5			
6			
7			
8			
9			
10			

### PLAT INFORMATION

PREPARED BY: [Name]  
 DATE: [Date]  
 FOR THE: [Name]  
 COUNTY: [County]  
 STATE: [State]

HUDSON  
 HEAD COUNTY  
 RECORDED ON:  
 07/03/2013 01:29PM  
 BY *Kasey J...* D. C.

13 NORTH ZONE)  
 160'  
 ALE



VICINITY SKETCH  
 NOT TO SCALE

LEGEND

- = BOUNDARY LINE
- = ADJACENT LOT LINE
- = EASEMENT LINE
- = ZONING SETBACK LINE
- F.R.B. = FOUND 5/8" REBAR
- F.I.P. = FOUND IRON PIPE
- S.I.P. = SET 1-1/4" IRON PIPE W/ PS #166 CAP

HEAD COUNTY, ARKANSAS  
 RTER WITHIN SECTION 15, TOWNSHIP  
 CULARLY DESCRIBED AS

ON: THENCE SOUTH 89°47'15" WEST,  
 37 28.60 FEET TO THE SOUTHERLY

E OF THE AFORESAID QUARTER  
 EASTERLY LINE OF FIELDERS  
 NE OF FIELDERS ACRES TO THE  
 TH 89°43'07" WEST, ALONG THE  
 LOT 5, SAID POINT LYING ON THE  
 ALONG THE WEST LINE OF SAID