

## MARSHALL ESTIMATES DRAINAGE

### AET COST ESTIMATES: (About 2004-2006)

### 2009 Estimate

Route "A" – ALLEY –  
\$226,685 + Easement Acquisition  
(= \$508/ft. for Construction Only)

\$260K-275K

*326*

Route "B" – Matthews in ROW –  
\$339,400 + Utility Relocation  
(= \$508/ft. for Construction Only)

\$380K-\$400K

Route "C" – Matthews outside ROW –  
\$261,170 + Property Acquisition  
(= \$395/ft. for Construction Only)

\$310K-325K

### COJ COST ESTIMATE: (2008)

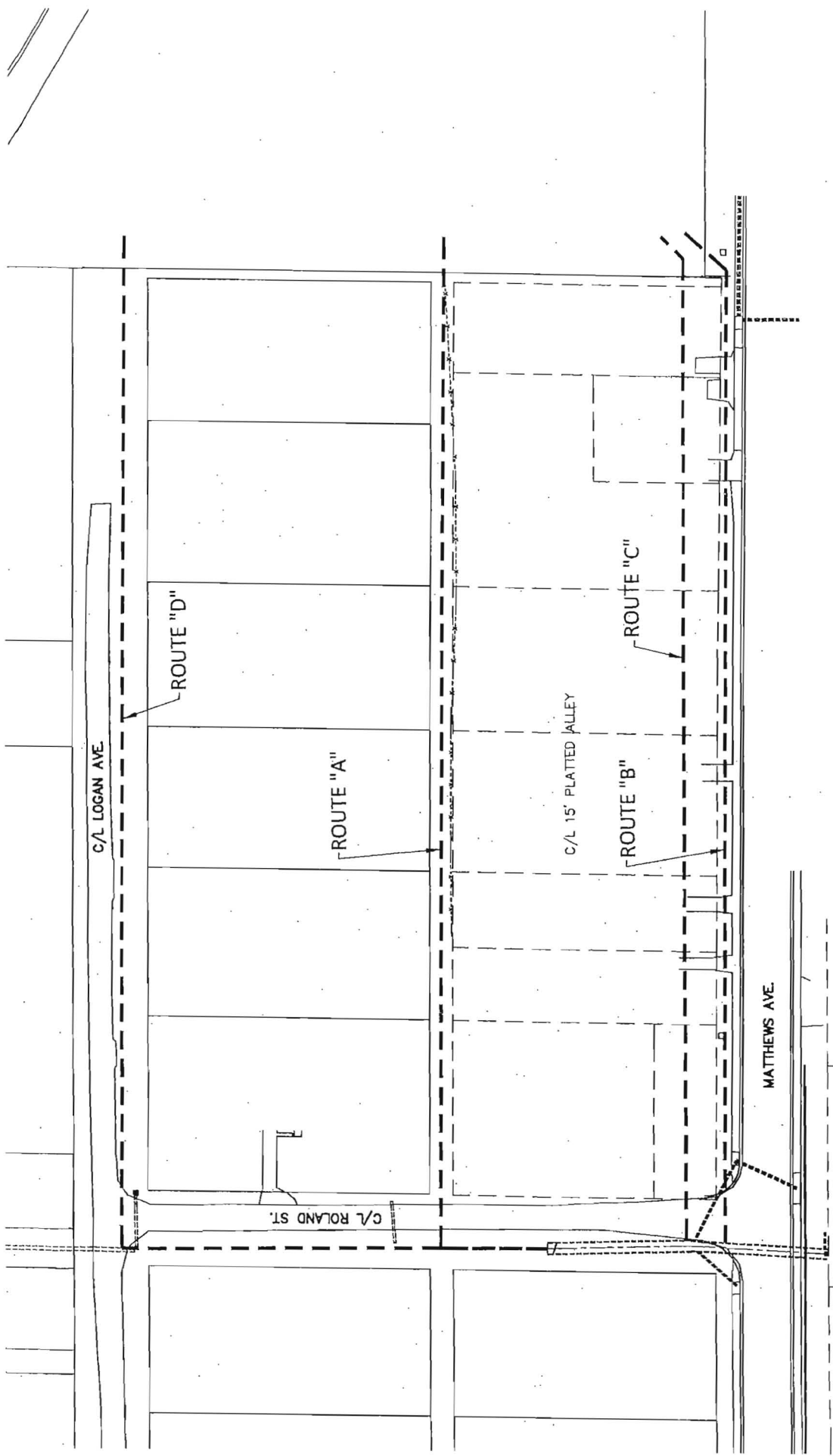
Route "D" – Logan - \$363,400  
(= \$369/ft. For Construction Only;  
No Property Acquisition Required,  
But May Require Street & Utility Re-Installation)

### AET ESTIMATE

Route "E" – South of Matthews; (No Property  
Or Easement Acquisition; Utility Relocation is  
"Small Telephone Line, Maybe Only Temporary.")

\$409,210

*3/6*



C/L LOGAN AVE.

ROUTE "D"

ROUTE "A"

C/L 15' PLATTED ALLEY

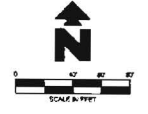
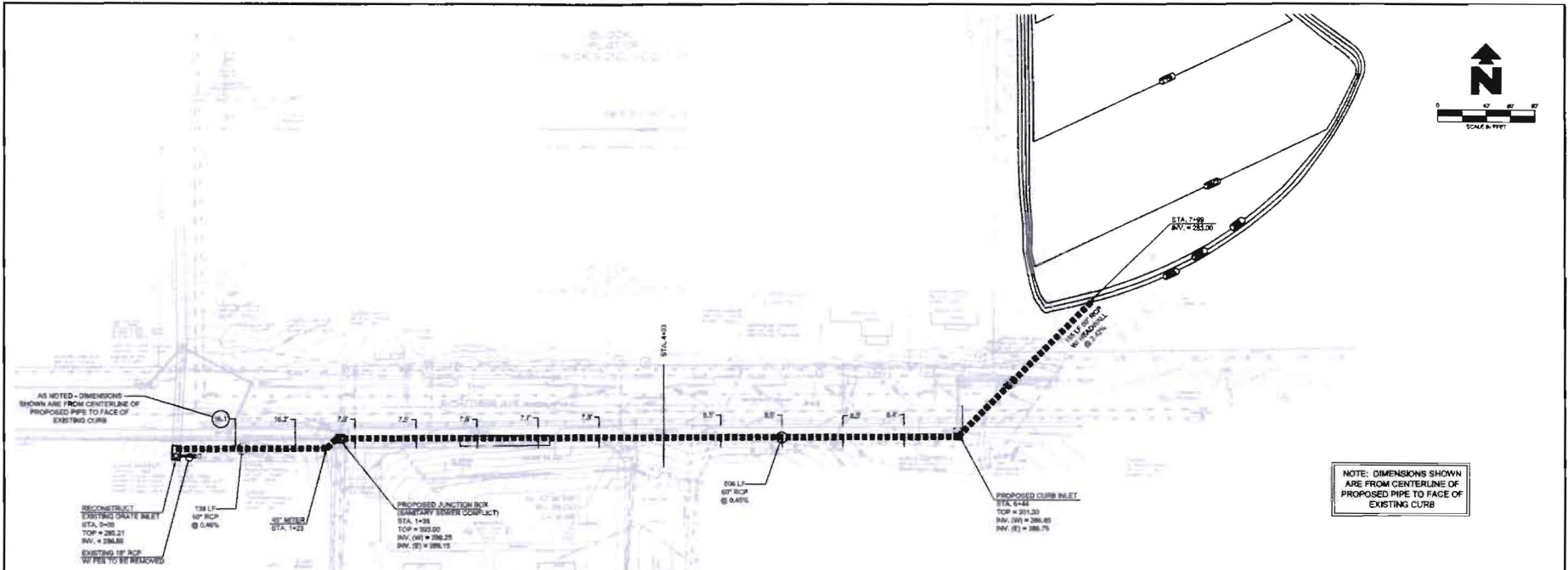
ROUTE "B"

ROUTE "C"

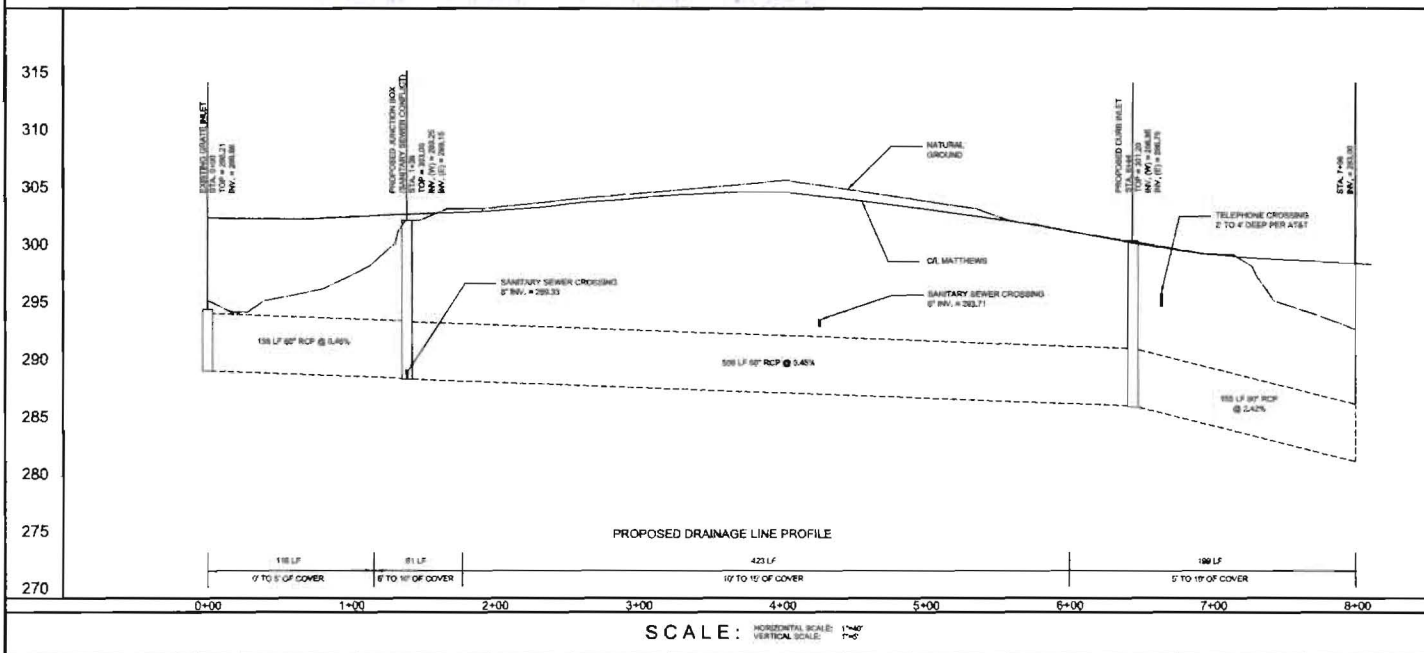
C/L ROLAND ST.

MATTHEWS AVE.

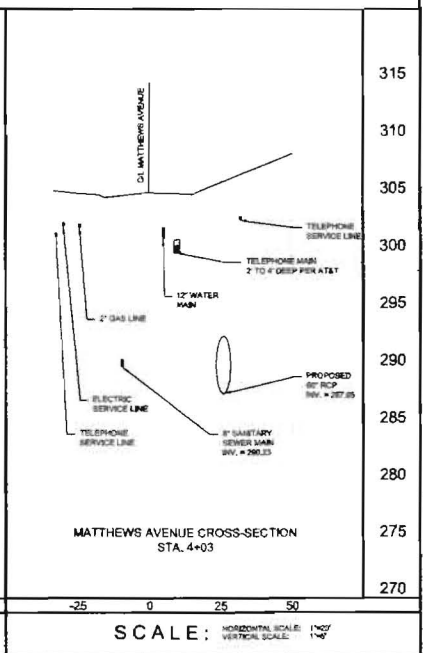
4/10



NOTE: DIMENSIONS SHOWN ARE FROM CENTERLINE OF PROPOSED PIPE TO FACE OF EXISTING CURB



SCALE: HORIZONTAL SCALE: 1\"/>



SCALE: HORIZONTAL SCALE: 1\"/>

REV	DATE	DESCRIPTION	BY

**ST. BERNARDS  
MARSHALL ESTATES DRAINAGE  
MATTHEWS AVENUE  
JONESBORO, ARKANSAS**

**BA Engineering**  
ENGINEERING

100 SOUTH CHARLES STREET  
JONESBORO, ARKANSAS 72401  
PHONE: (870) 932-3388 FAX: (870) 932-1283 email: ba@baengineering.com



PLAN & PROFILE

**C-1**