

CHAPMAN'S SOUTHWEST REPLAT

A REPLAT OF:

The following described lands in Craighead County, Arkansas, to-wit:

LOT A:

ALL of Lot 23 and that part of Lot 11, Block "A" of Benton's Subdivision Extended of part of the East Half of the Southwest Quarter of Section 2, Township 13 North, Range 3 East, lying North of Highway 49, to the City of Jonesboro, as shown by a plat of record in Plat Book 179 at page 16, said lands being more particularly described as follows: Beginning at the Northwest corner of said Lot 23, run thence S47°04'E 285.3 feet to the North right of way of Highway 49, run thence N43°45'E along said right of way 100.0 feet, run thence N47°04'W 286.0 feet, run thence S43°21'W 100.0 feet to the true point of beginning, containing 0.66 acre, more or less.

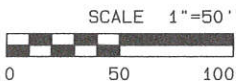
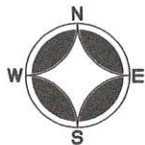
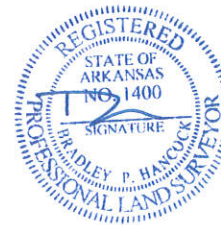
Notes:

- 1.) Bearings shown are from GPS, Arkansas State Plane North Zone.
- 2.) Lot is vacant.

Dated: October 26, 2015

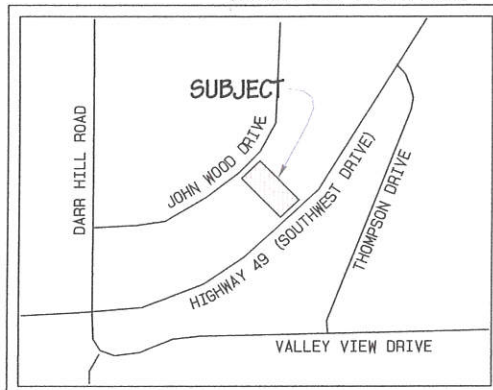
OWNERS CERTIFICATION

We, the owners of the lands shown and described hereon do hereby accept the plan of replat as platted, further dedicating all easements and rights of way of record to public use.

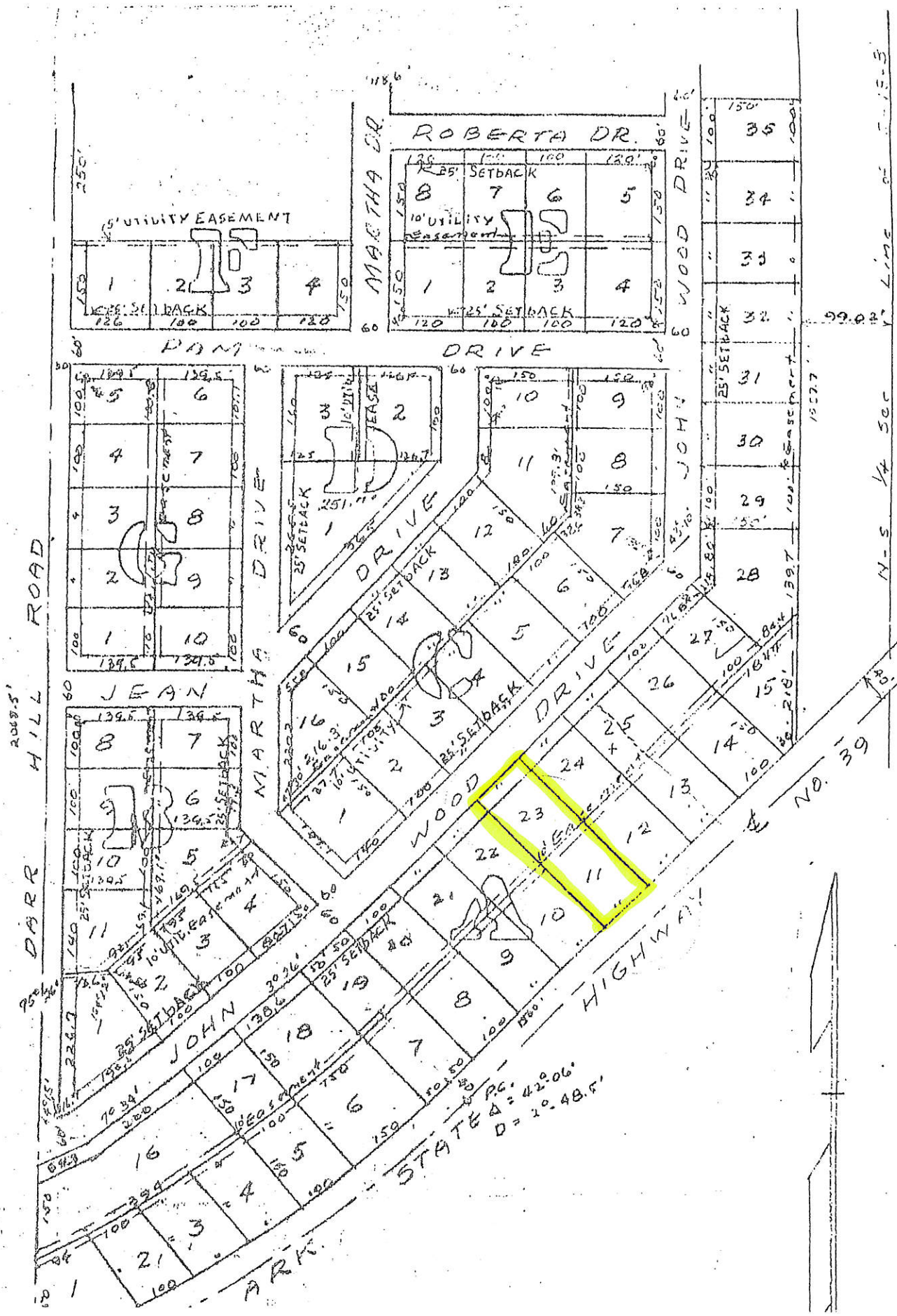


Bradley P. Hancock
 Surveying & Mapping
 120 North Second Street
 Paragould, Arkansas

VICINITY MAP: not to scale



CRAIGHEAD COUNTY, ARKANSAS.



STATE H.W. 39
 P.C. = 42.06'
 Δ = 1°.48.5'

Line of 15.5
 N-S 1/4 Sec

99.02'

152.7

139.7

184.4

151.8

100.0

100.0

100.0

100.0

100.0

100.0

100.0

100.0

100.0

100.0

100.0

100.0

100.0

100.0

100.0

100.0

100.0

100.0

100.0

100.0

100.0

100.0

100.0

100.0

100.0

100.0

100.0

100.0

100.0

100.0

100.0

100.0

100.0

100.0

100.0

100.0

100.0

100.0

100.0

100.0

100.0

100.0

100.0

100.0

100.0

100.0

100.0

100.0

100.0

100.0

100.0

100.0

100.0

100.0

100.0

100.0

100.0

100.0

100.0

100.0

100.0

100.0

100.0

100.0

100.0

100.0

100.0

100.0

100.0

100.0

100.0

100.0

100.0

100.0

100.0

100.0

100.0

100.0

100.0

100.0

100.0

100.0

100.0

100.0

100.0

100.0

100.0

100.0

100.0

100.0

100.0

100.0