

**ARKANSAS DEPARTMENT OF TRANSPORTATION  
COMPENSATION ESTIMATE**

**Arkansas Job Number: 100657 County: Craighead Tract: 85**  
**Location: I-555 – Hwy. 49, Dr. Martin Luther King Jr. DR. Extension**  
**(Jonesboro) (S)**

**Fee Owner:** City of Jonesboro, Arkansas  
**Address:** 300 S Church Street  
Jonesboro, AR 72401  
**Telephone:** 870-932-1052

---


Area Of The Whole:	4.17± Ac	Permanent Easement(s):
Area Of Remainder:	4.12± Ac	Temporary Easement(s):
Area Of Acquisition:	0.05± Ac	

---

**ACQUISITION COMPENSATION:**

Fee Title:	0.05±ac at \$25,500/ac	\$	1,275.00
Temporary Easement(S):		\$	
Permanent Easement(S):		\$	
Improvements Acquired:		\$	
		Subtotal:	\$ 1,275.00
Cost To Cure Items:		\$	
SIGNS:		\$	

**Estimate of Total Compensation \$ 1,275.00**

  
\_\_\_\_\_  
PREPARED BY JOHN L ADAMS

  
\_\_\_\_\_  
ADMINISTRATIVE APPROVAL

Date: 11/18/2020

Date: 12/10/2020

QC: NIS

**COMMENTS:** Tract inspected on 11/5/2020. Staking incomplete at time of inspection. Sales used 7 13 14 & 15. Highway frontage access will be partially controlled.



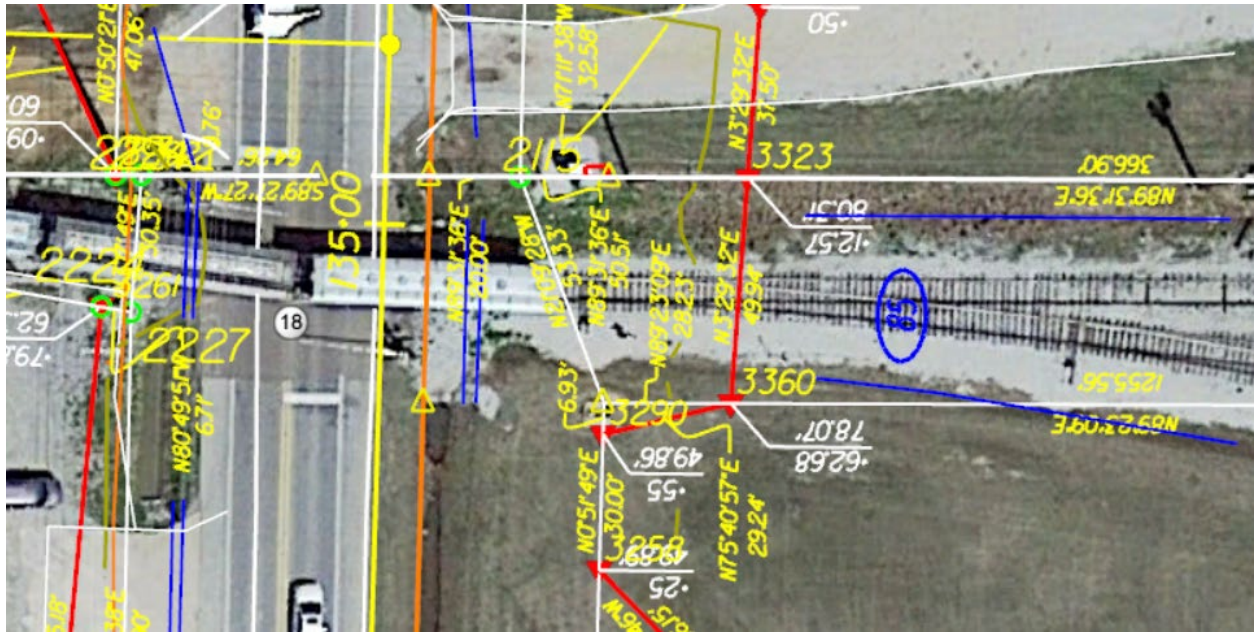
DESCRIPTION: Acquisition Right facing INITIALS: JLA  
DIRECTION: SE DATE: 11/5/2020

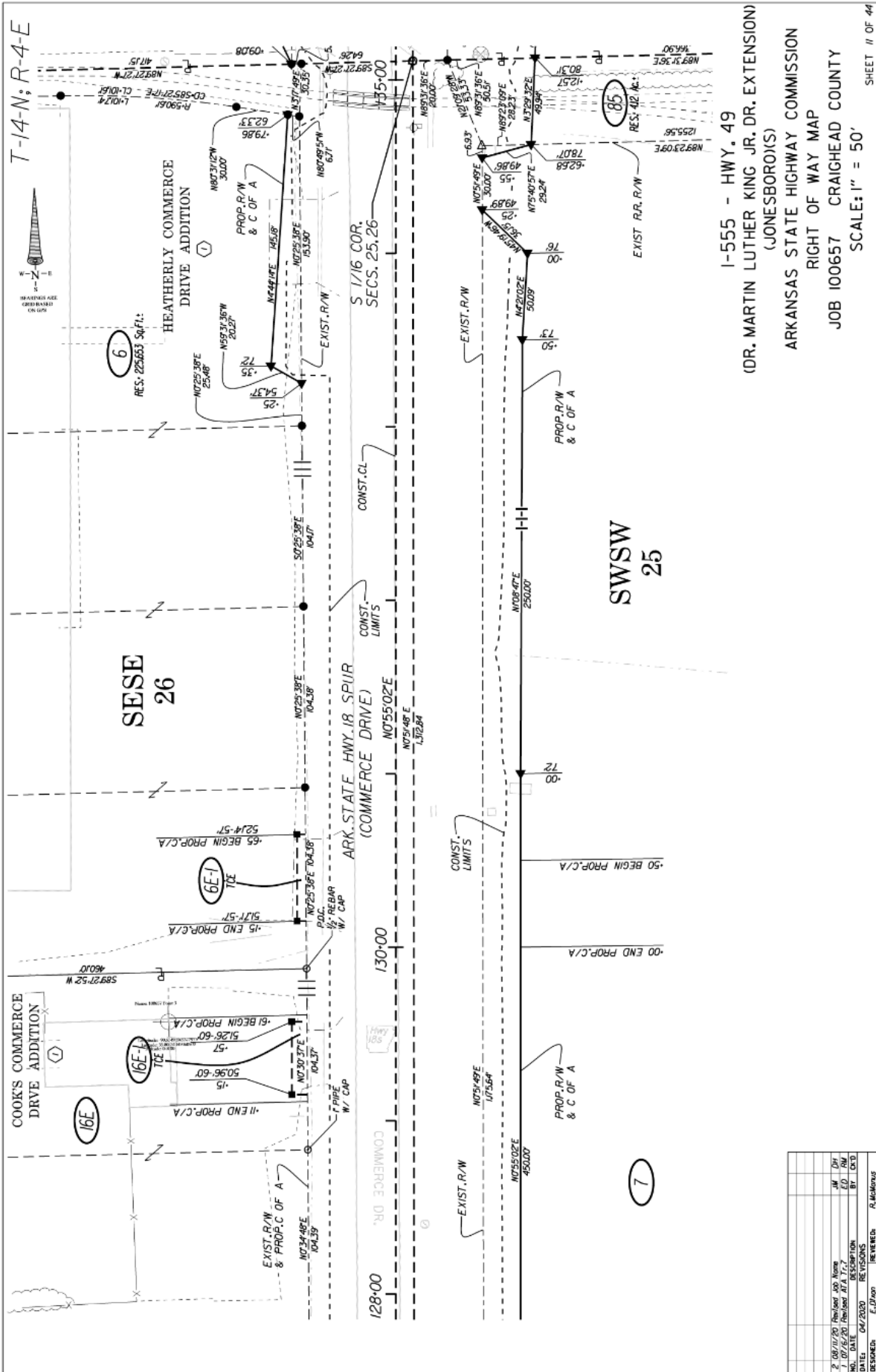


DESCRIPTION: Acquisition Left facing INITIALS: JLA  
DIRECTION: E DATE: 11/5/2020



DESCRIPTION: Whole property INITIALS: JLA  
DIRECTION: E DATE: 11/5/2020



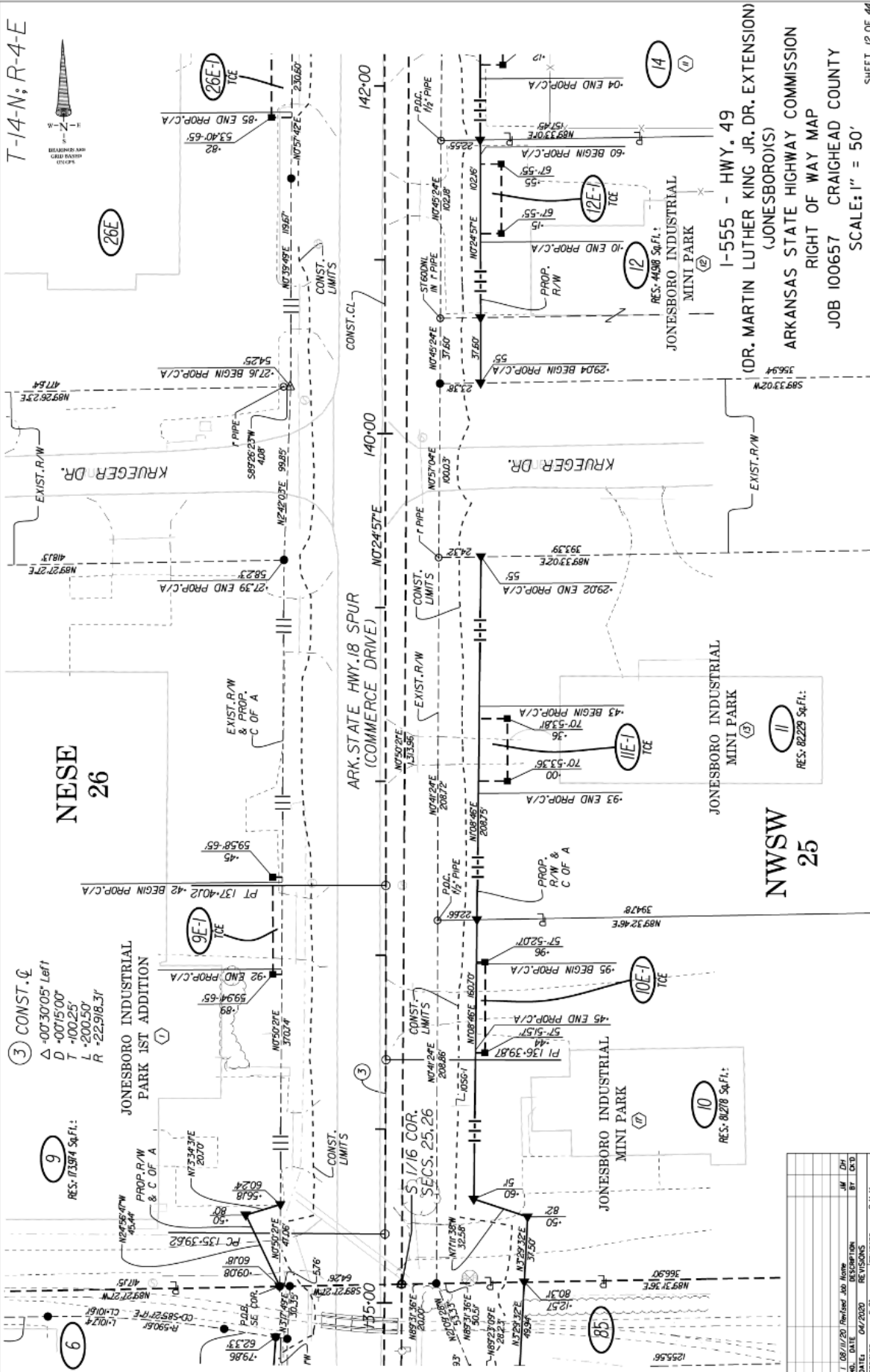


T-14-N; R-4-E

1-555 - HWY. 49  
 (DR. MARTIN LUTHER KING JR. DR. EXTENSION)  
 (JONESBORO(S))  
 ARKANSAS STATE HIGHWAY COMMISSION  
 RIGHT OF WAY MAP  
 JOB 100657 CRAIGHEAD COUNTY  
 SCALE: 1" = 50'

NO.	DATE	REVISIONS	BY	CHKD
1	04/20/00	REVISIONS	BY	BY
2	04/20/00	REVISIONS	BY	BY

DESIGNED: E. D. PAPP      REVIEWED: R. H. MURPHY



T-14-N; R-4-E



3 CONST. Q  
 Δ -00°30'05" Left  
 D -00°15'00"  
 T -100.25'  
 L -200.50'  
 R -22.918.31'

9  
 RES: 11394 Sq.Ft.

JONESBORO INDUSTRIAL  
 PARK 1ST ADDITION

NWSW  
 25

I-555 - HWY. 49  
 (DR. MARTIN LUTHER KING JR. DR. EXTENSION)  
 (JONESBORO'S)  
 ARKANSAS STATE HIGHWAY COMMISSION  
 RIGHT OF WAY MAP  
 JOB 100657 CRAIGHEAD COUNTY  
 SCALE: 1" = 50'

SHEET 12 OF 44

NO.	DATE	DESCRIPTION	BY	CHK'D
1	04/20/20	REVISIONS		
2		REVISIONS		
3		REVISIONS		
4		REVISIONS		
5		REVISIONS		
6		REVISIONS		
7		REVISIONS		
8		REVISIONS		
9		REVISIONS		
10		REVISIONS		
11		REVISIONS		
12		REVISIONS		
13		REVISIONS		
14		REVISIONS		
15		REVISIONS		
16		REVISIONS		
17		REVISIONS		
18		REVISIONS		
19		REVISIONS		
20		REVISIONS		
21		REVISIONS		
22		REVISIONS		
23		REVISIONS		
24		REVISIONS		
25		REVISIONS		
26		REVISIONS		
27		REVISIONS		
28		REVISIONS		
29		REVISIONS		
30		REVISIONS		
31		REVISIONS		
32		REVISIONS		
33		REVISIONS		
34		REVISIONS		
35		REVISIONS		
36		REVISIONS		
37		REVISIONS		
38		REVISIONS		
39		REVISIONS		
40		REVISIONS		
41		REVISIONS		
42		REVISIONS		
43		REVISIONS		
44		REVISIONS		
45		REVISIONS		
46		REVISIONS		
47		REVISIONS		
48		REVISIONS		
49		REVISIONS		
50		REVISIONS		
51		REVISIONS		
52		REVISIONS		
53		REVISIONS		
54		REVISIONS		
55		REVISIONS		
56		REVISIONS		
57		REVISIONS		
58		REVISIONS		
59		REVISIONS		
60		REVISIONS		
61		REVISIONS		
62		REVISIONS		
63		REVISIONS		
64		REVISIONS		
65		REVISIONS		
66		REVISIONS		
67		REVISIONS		
68		REVISIONS		
69		REVISIONS		
70		REVISIONS		
71		REVISIONS		
72		REVISIONS		
73		REVISIONS		
74		REVISIONS		
75		REVISIONS		
76		REVISIONS		
77		REVISIONS		
78		REVISIONS		
79		REVISIONS		
80		REVISIONS		
81		REVISIONS		
82		REVISIONS		
83		REVISIONS		
84		REVISIONS		
85		REVISIONS		
86		REVISIONS		
87		REVISIONS		
88		REVISIONS		
89		REVISIONS		
90		REVISIONS		
91		REVISIONS		
92		REVISIONS		
93		REVISIONS		
94		REVISIONS		
95		REVISIONS		
96		REVISIONS		
97		REVISIONS		
98		REVISIONS		
99		REVISIONS		
100		REVISIONS		

Job: 100657 Tract: 85