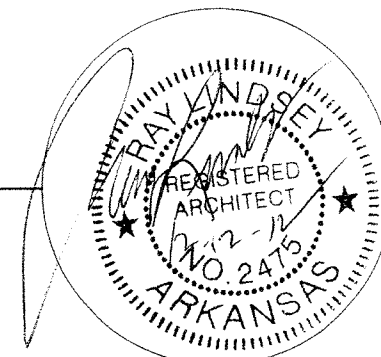


Reception Hall
 for
Jose R. Muñoz
 102 S. Culberhouse
 Jonesboro Arkansas



Code Information:
 International Building Code, 2006 Edition, (with 2007 State Addmenents)
 NFPA 101 Life Safety Code, 2006 Edition
 Arkansas Fire Prevention Code, 2007 Edition, Vol. 1,2 & 2
 Hvac-Mechanical Code-2010 IMC
 2008 National Electrical Code
 2004 Arkansas Energy Code for New Building Construction
 Plumbing Code-2006 ASPC
 Gas Code-2006 Arkansas Gas Code
 Arkansas Architectural Barriers Law ANSI 117. 2003

Occupancy: Assembly, Group A-3
 Type of Construction: Type II-B, Non-Sprinkled
 Building Size: 4,576 S. F.
 Assembly: 3,986 S. F. Kitchen, Toilets, Office: 590
 Allowable: Two Story, 9,600 Business
 Area Increase Modification: Not Required
 Occupancy Load: 268
 Fire Resistive Construction: Table 508.3.3; 1 Hr Corridor Separation
 Fire Protection Systems: Fire Alarm
 Fire Sprinkler Systems: Not Required
 Means of Egress: 200' Max. Travel Distance
 20' Max. Dead end Corridor
 0.2" per Occupant Exit Width = 10.6" Req'd
 Minimum No. Exits: 2, 2 provided
 Minimum Exit Width: 32"

Seismic Zone: 3

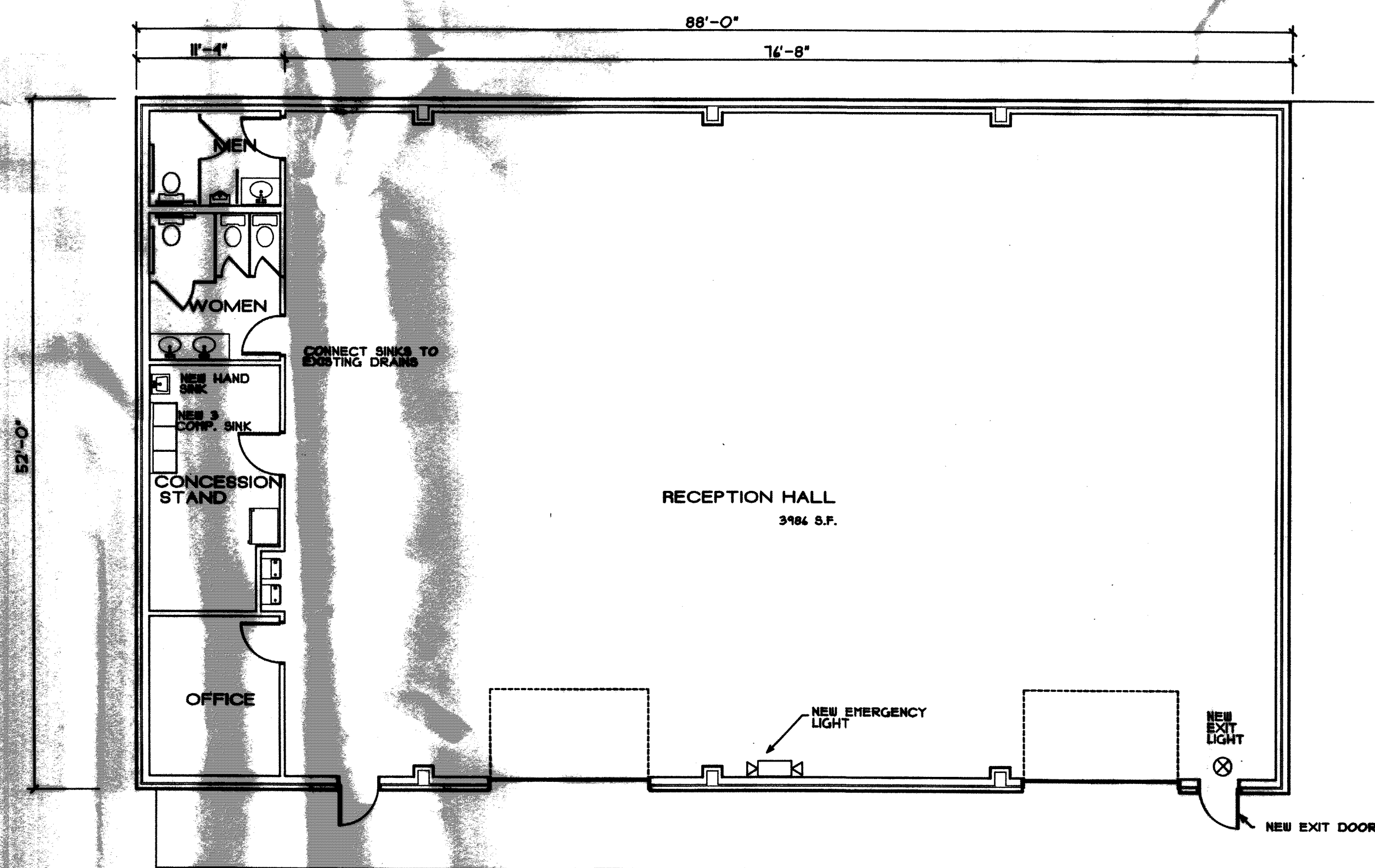
Code Information

DESIGN TECH ASSOCIATES
 Ray Lindsey Architect
 318 Greene Road #792
 Paragould, AR 72450
 870-239-0077 Fax: 240-0916

Project Architect

I HEREBY CERTIFY THAT THESE PLANS AND SPECIFICATIONS
 HAVE BEEN PREPARED BY ME OR UNDER MY SUPERVISION.
 I FURTHER CERTIFY THAT TO THE BEST OF MY KNOWLEDGE
 THESE PLANS AND SPECIFICATIONS ARE AS REQUIRED BY
 LAW AND IN COMPLIANCE WITH THE ARKANSAS FIRE
 PREVENTION CODE FOR THE STATE OF ARKANSAS.

Ray Lindsey
 RAY LINDSEY, AIA, ARCHITECT



PROPOSED FLOOR PLAN

1/8" = 1'-0"

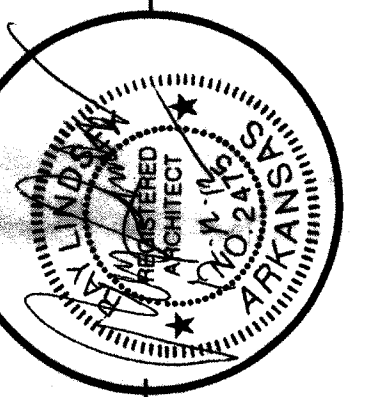
New Reception Hall

for R. Muñoz

102 South Culberhouse

Jonesboro

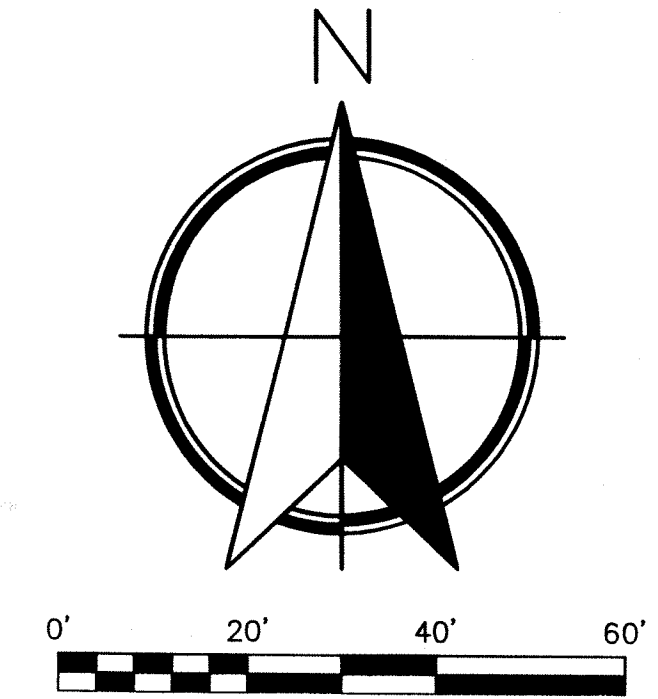
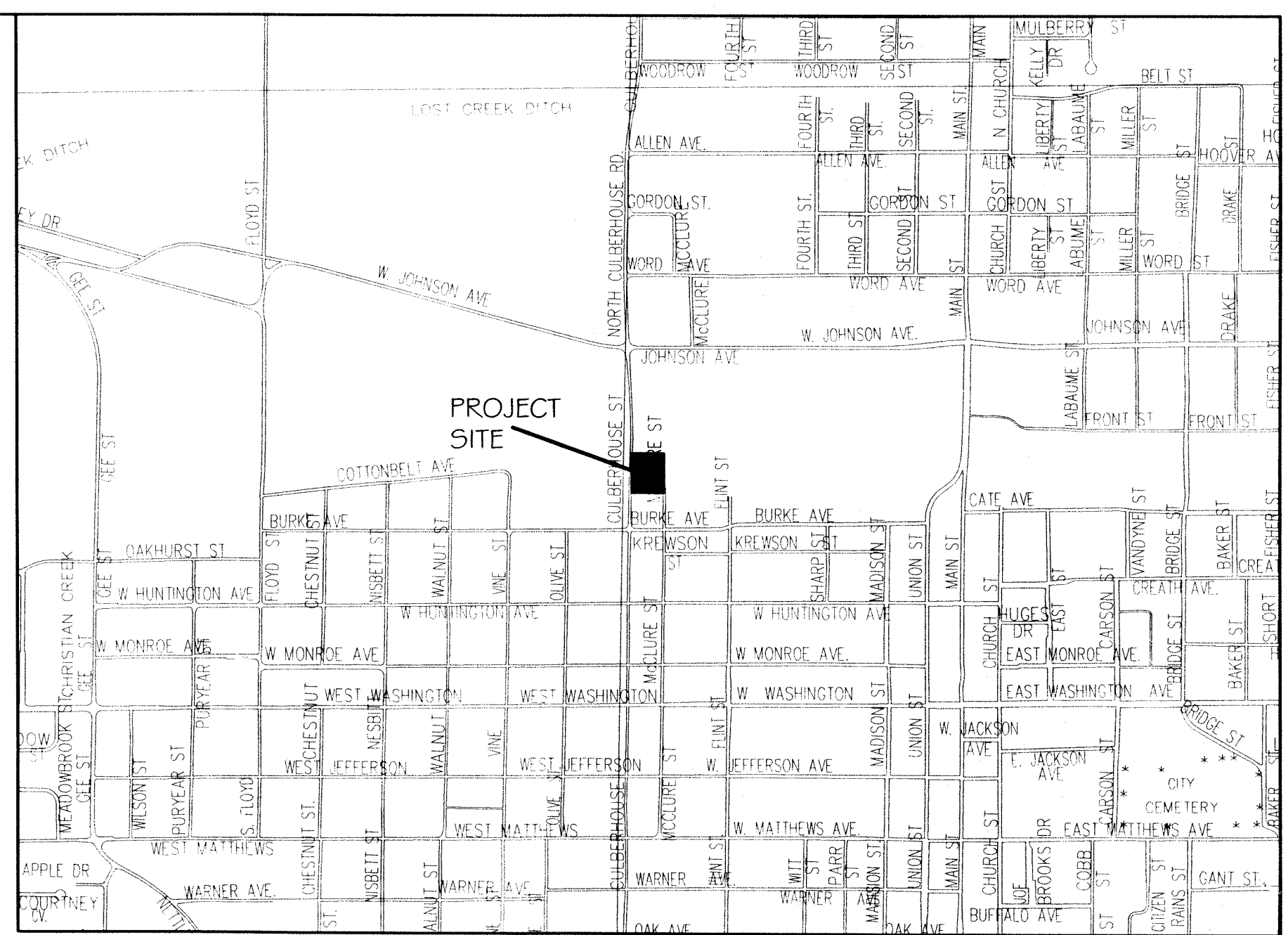
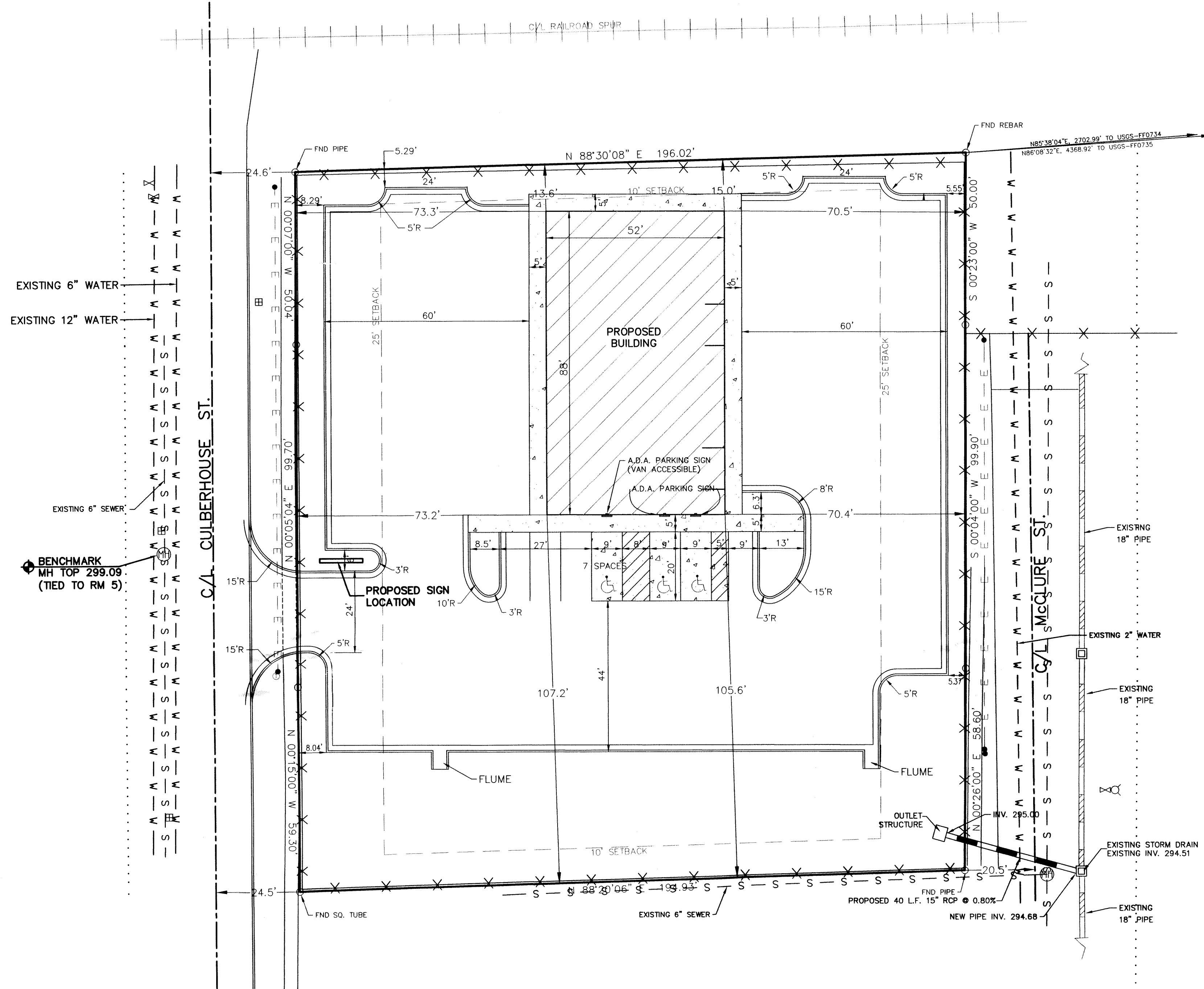
Arkansas



Ray Lindsey

Architect
 918 Greene Road #702
 Paragould, AR 72450
 870-896-9804 Fax: 896-8750

Drawn	RGL	Revised
Date	8-2-02	Revision No.
Job No.	1242	
A-1		



LEGEND

- These standard symbols will be found in the drawing.
- ⊕ WATER VALVE
 - ⊕ STORM DRAIN
 - ⊕ SEWER MANHOLE
 - ⊕ FENCE
 - ⊕ TELEPHONE PEDESTAL
 - ⊕ POWER POLE
 - ⊕ WATER METER
 - ⊕ FIRE HYDRANT

ENGINEERS PLANNERS SURVEYORS

Civilogic

203 Southwest Dr., Jonesboro, AR - (870)932-7880 - www.civilogic.net

PROPOSED SITE LAYOUT FOR EVERS BROWN JONESBORO, ARKANSAS

Date	Scale	Job No.	Sheet No.
09/24/09	1"=20'	109102	1 of 5
Section	Township	Range	County
18	14N	04E	CRAIGHEAD

ONLY COPIES WITH VIOLET COLORED SIGNATURE ARE VALID CIVILOGIC COPIES

© 2009, Civilogic Drawn By: RE

STATE OF ARKANSAS REGISTERED PROFESSIONAL ENGINEER

GEORGE M. HANMAN 7880

CIVILOGIC No. 329

ARKANSAS-ENGINEER