



Photo 35 - Loft northeast unit looking at northeast corner of building. Ceiling collapse.



Photo 36 - Loft northeast unit looking east. Example of brick construction - missing bricks are piled on the floor not just below the bottom of this picture.



Photo 37 - Loft northeast unit looking east. Example of brick construction - sealant is evident in the darker colored brick. Where sealed the mortar is hard on the exterior of the brick, but soft 1/2" or so within the brick wall.



Photo 38 - Loft northeast unit looking east. Example of brick construction - Mortar is soft and can be scraped out with my key.

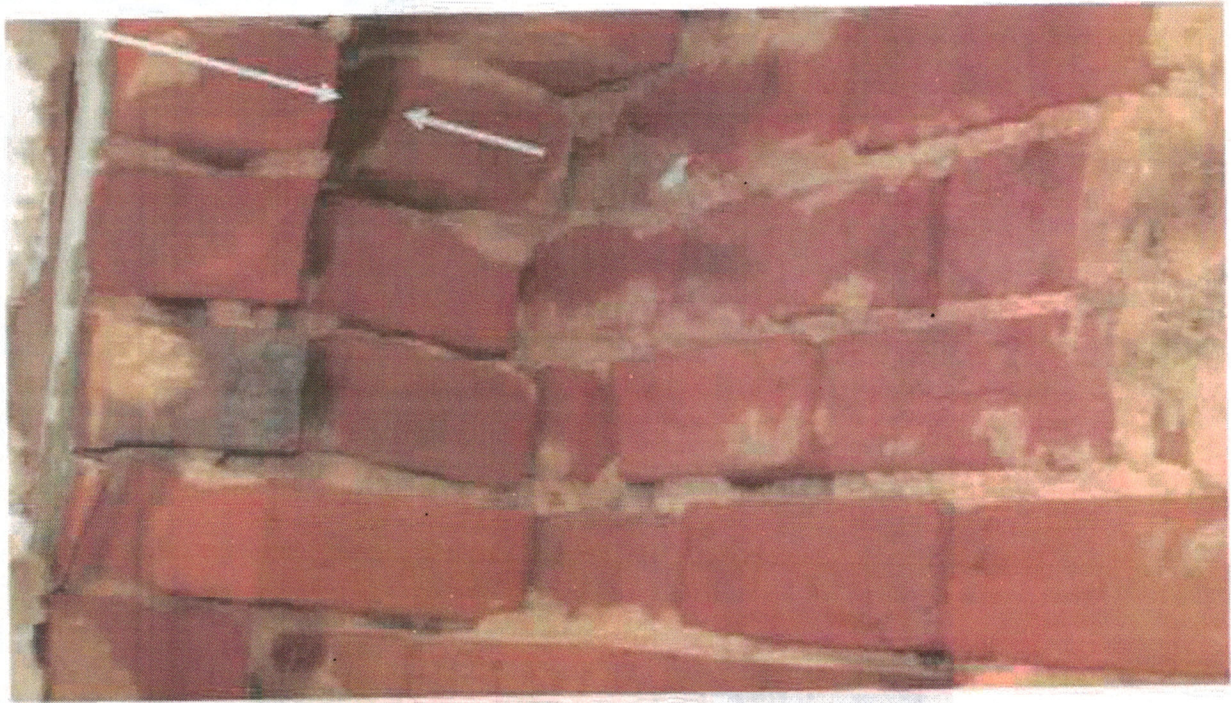


Photo 39 - loft northeast unit looking at same damaged area to brick. Interior face of brick has moved approximately 1" or more from interior wythes. Mortar not bonding - notice the lack of mortar on the face of brick units



Photo 41 - West face of building.



Photo 42 - West face of building.