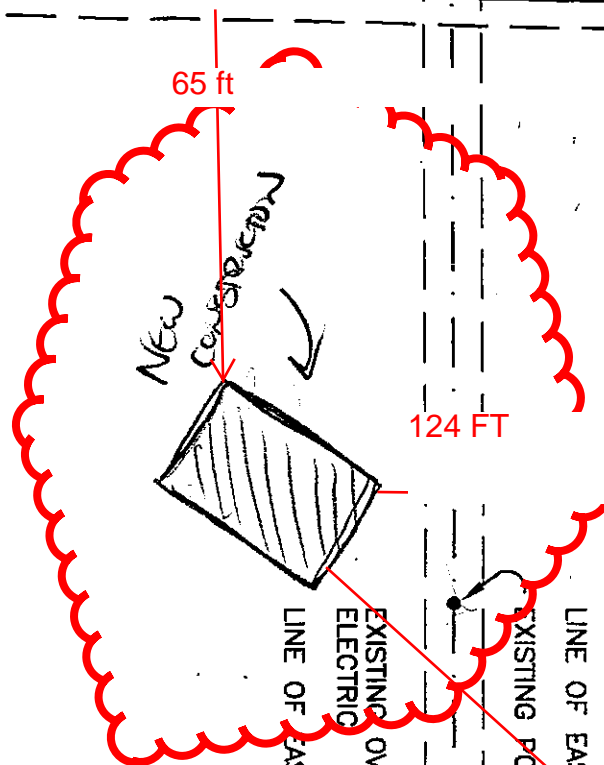


N 1°26'16" E
572.6'

12°13' E
0.45'
39°57' W
7.2'

TRACT 1: 9.47 ACRES - R-1 ZONING
TRACT "3" OF LYNCH'S LAWSON ROAD
ADDITION TO JONESBORO, ARKANSAS.



25'-0" SETBACK

EAST
245.06'

N 9°37' E
172.9'

7'-6" SETBACK

25'-0" SETBACK

320 FT

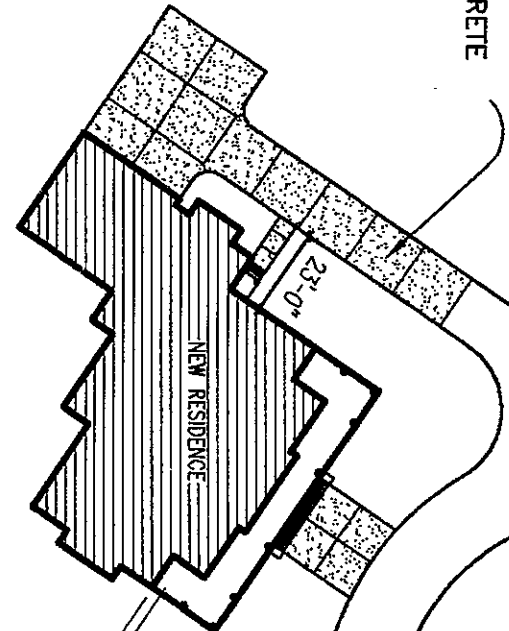
15'-0" UTILITY EASEMENT

EXISTING POWER POLE

S 55°39' E
585.5'

LAWSON

NEW CONCRETE DRIVE



NEW CHAT OR ASPHALT DRIVE

R76'-0"

R56'-0"

119'-5"

189'-5 1/2"

S 44°43'15" W
1076.1'