



**BID PACKAGE 1**  
(PREVIOUSLY ISSUED)  
INDEX - SHEET INDEX - CIVIL

SHEET NUMBER	SHEET NAME
C002	GENERAL NOTES
C003	BOUNDARY & TOPOGRAPHIC SURVEY
C004	SITE PLAN
C005	DEMOLITION PLANS
C006	UTILITY PLAN
C007	GRADING PLAN
C008	EROSION CONTROL PLAN
C009	LANDSCAPE PLAN
C010	STANDARD DETAILS
C011	STANDARD DETAILS
C012	EROSION CONTROL DETAILS

**BID PACKAGE 2**  
INDEX - SHEET INDEX - STRUCTURAL

SHEET NUMBER	SHEET NAME
S0.0	NOTES AND LEGENDS
S1.1	FOUNDATION PLAN
S1.2	MECH ENCLOSURE FOUNDATION PLAN AND RETAINING WALL DETAILS
S2.1	FOUNDATION DETAILS
S2.2	FOUNDATION DETAILS

INDEX - SHEET INDEX - PLUMBING

SHEET NUMBER	SHEET NAME
P0.01	UNDERGROUND PLUMBING PACKAGE

INDEX - SHEET INDEX - ELECTRICAL

SHEET NUMBER	SHEET NAME
E0.01	UNDERGROUND ELECTRICAL PACKAGE

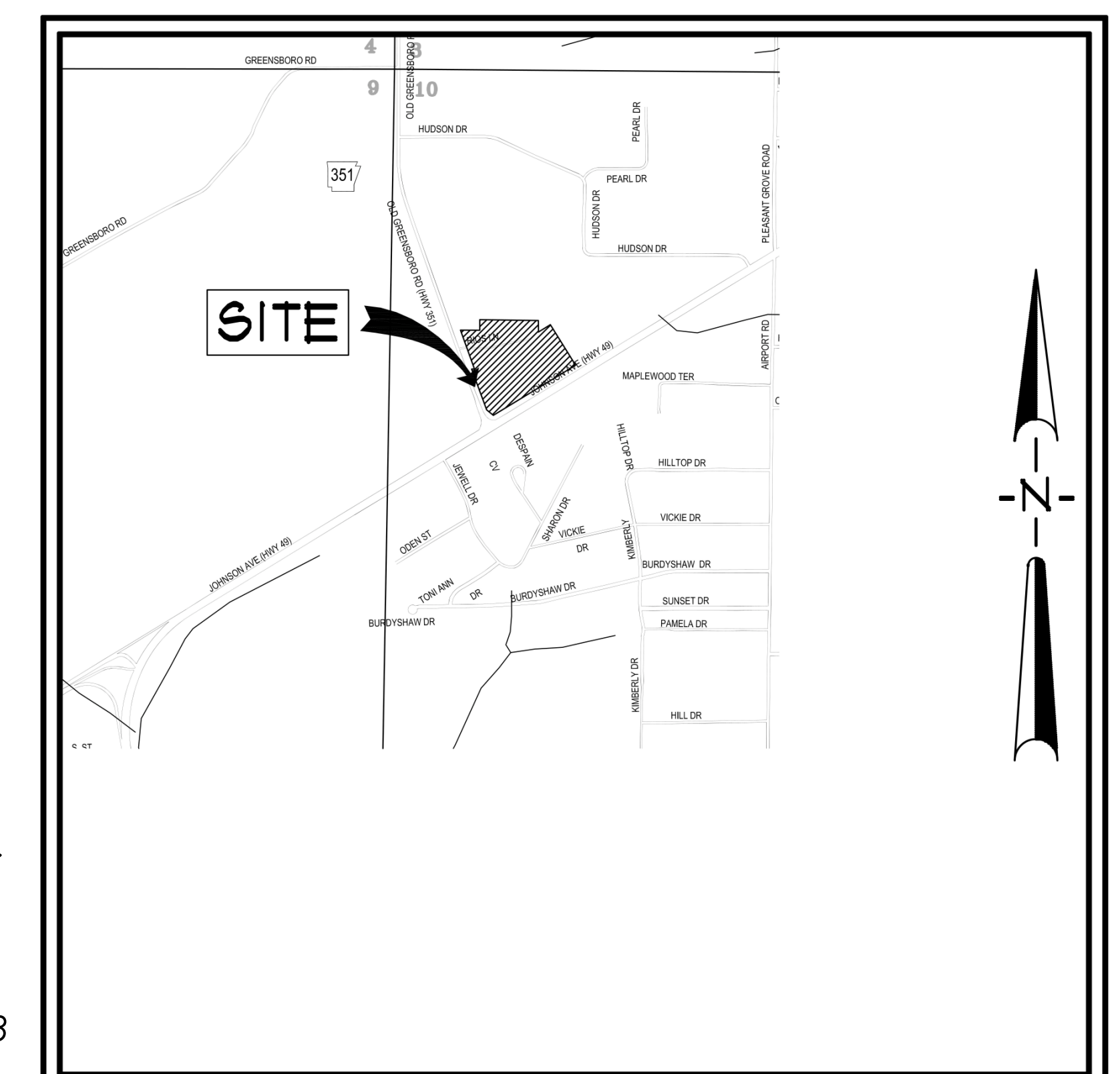
## FIRST NATIONAL BANK HILLTOP BRANCH & OFFICE BUILDING

3500 East Johnson Avenue, Jonesboro, Ar

W D & D J O B #16-028

UNDER SLAB & FOUNDATION PACKAGE

09/19/16



VICINITY MAP

WITTENBERG, DELONY, & DAVIDSON, INC.  
ARCHITECTS - INTERIOR DESIGN -  
PLANNERS  
400 WEST CAPITOL, SUITE 1800  
LITTLE ROCK, ARKANSAS 72201-4857  
PH. # 501-376-6681  
FAX # 501-376-0231

ENGINEERING CONSULTANTS, INC.  
STRUCTURAL ENGINEERS  
401 WEST CAPITOL AVE., SUITE 305  
LITTLE ROCK, ARKANSAS 72201  
PH. # 501-376-3752  
FAX # 501-376-7314

BATSON INC. | ENGINEERING SOLUTIONS  
MEP ENGINEERS  
1300 BROOKWOOD DRIVE  
LITTLE ROCK, ARKANSAS 72202  
PH. # 501-664-3311  
FAX # 501-664-3344

Associated Engineering, LLC  
CIVIL ENGINEERS  
103 South Church St.  
P.O. Box 1462  
Jonesboro, ARKANSAS 72403  
PH. # 870-932-3594  
FAX # 870-935-1263



ABBREVIATION LEGEND

Table with 2 columns: Abbreviation and Description. Includes entries for ANCHOR RODS, BASE PLATE, CHANNEL SHAPES, CONCRETE, METAL BUILDING CONNECTIONS, etc.

STRUCTURAL NOTES

- GENERAL NOTES: 1. THE CONTRACTOR SHALL THOROUGHLY REVIEW ALL CONTRACT DOCUMENTS AND INFORM THE ARCHITECT OF CONFLICTS OR DISCREPANCIES PRIOR TO BIDDING, FABRICATION, AND CONSTRUCTION. 2. IN CASES OF DISCREPANCIES IN DIMENSIONS AND ELEVATIONS BETWEEN STRUCTURAL AND ARCHITECTURAL DRAWINGS, CONTRACTOR SHALL COORDINATE WITH THE ARCHITECT PRIOR TO FABRICATION AND CONSTRUCTION.

POST-TENSIONED CONCRETE (CONTINUED)

- 12. TENDON PLACEMENT SHALL NOT VARY MORE THAN 1/8" VERTICALLY FROM THE ORDINATES GIVEN. 13. THE EXPOSED PORTION OF THE TENDON AND THE GRIPPING PART OF THE ANCHORAGE SHALL BE COATED WITH AN EPOXY-RESIN COMPOUND BEFORE BEING DRY-PAKED WITH GROUT. 14. GROUT ALL FORM POCKETS SOLID WITH NON-SHRINK, NON-METALLIC GROUT AS SOON AS TENDON TAILS ARE CUT OFF AND FORM POCKETS ARE SEALED AGAINST MOISTURE.

STRUCTURAL STEEL (CONTINUED)

- 19. WHERE STEEL BACKING IS USED IN CONNECTIONS WITH COMPLETE-JOINT-PENETRATION (CJP) FLANGE WELDS, STEEL BACKING AND TABS SHALL BE REMOVED EXCEPT THAT TOP FLANGE BACKING ATTACHED TO THE COLUMN BY A CONTINUOUS FILLET WELD ON THE EDGE BELOW THE CJP GROOVE WELD NEED NOT BE REMOVED. 20. FOLLOWING THE REMOVAL OF BACKING, THE STEEL BACKING SHALL BE BACKGROUTED TO SOUND WELD METAL AND BACKWELDED WITH A REINFORCING FILLET. THE REINFORCING FILLET SHALL HAVE A MINIMUM LEG SIZE OF 3/16" (8 mm).

DESIGN LOADS

Table listing design loads: DEAD LOADS, ROOF LIVE LOADS, FLOOR LIVE LOADS, WIND SPEED FOR RISK CATEGORY II & EXPOSURE C, BUILDING RISK CATEGORY, etc.

CONCRETE REINFORCEMENT (03-20-00)

- 1. CONCRETE REINFORCEMENT SUPPLIER SHALL SUBMIT SHOP DRAWINGS TO THE ARCHITECT FOR REVIEW PRIOR TO CONSTRUCTION. 2. ALL REINFORCING STEEL SHALL BE ASTM A615, GRADE 60, UNLESS NOTED OTHERWISE.

MASONRY NOTES (04-00-00)

- 1. ALL CONCRETE MASONRY UNITS (CMU) SHALL COMPLY WITH ASTM 90, AND HAVE A MINIMUM NET COMPRESSIVE STRENGTH OF 1900 PSI. SIZES SHALL BE AS INDICATED ON THE CONTRACT DRAWINGS. 2. TYPE S MORTAR SHALL BE USED ABOVE AND BELOW GRADE. MIX MORTAR IN ACCORDANCE WITH ASTM C270. USE TYPE I PORTLAND CEMENT (TYPE III MAY BE USED FOR COLD WEATHER CONSTRUCTION) MEETING ASTM C1509, HYDRATED LIME MEETING ASTM C207 AND AGGREGATE MEETING ASTM C144.

CAST-IN-PLACE CONCRETE (03-30-00)

- 1. CONCRETE SUPPLIER SHALL SUBMIT CONCRETE MIX DESIGN DATA TO THE ARCHITECT FOR REVIEW PRIOR TO CONSTRUCTION. 2. CONCRETE SHALL HAVE AT LEAST THE FOLLOWING MINIMUM COMPRESSIVE STRENGTHS AT 28 DAYS: A. FOOTINGS 3000 PSI B. STAR LANDINGS & STAIR TREADS 3000 PSI

POST-TENSIONED CONCRETE (03-38-00)

- 1. POST-TENSIONING SUPPLIER SHALL SUBMIT SHOP DRAWINGS SEALED AND SIGNED BY A PROFESSIONAL ENGINEER REGISTERED IN THE STATE OF ARKANSAS TO THE ARCHITECT FOR REVIEW PRIOR TO FABRICATION. 2. SHOP DRAWINGS SHALL SHOW THE EXACT NUMBER, LENGTH AND SPACING OF TENDONS AND ALL SUPPORT BARS AND CHAIR HEIGHTS REQUIRED.

CAST-IN-PLACE CONCRETE MIX DESIGN TABLE

Table with 4 columns: Item, Min. Cement, Max. Permissible W/C Ratio, and Max. Slump. Includes rows for 3000, 4000, and 5000 psi concrete.

STRUCTURAL STEEL (05-12-00)

- 1. STRUCTURAL STEEL SUPPLIER SHALL SUBMIT SHOP DRAWINGS TO THE ARCHITECT FOR REVIEW PRIOR TO FABRICATION. 2. ALL STRUCTURAL STEEL SHAPES SHALL BE AS FOLLOWS: A. ALL WIDE FLANGE STRUCTURAL STEEL SHAPES SHALL BE ASTM A992.

EXCAVATION & FILL (31-22-00 & 31-23-23)

- 1. ALL UNDERCUTTING, SITE PREPARATION, FILL SELECTION, BACKFILLING AND COMPACTION SHALL BE PERFORMED IN STRICT ACCORDANCE WITH THE SPECIFICATIONS AND SOILS ENGINEER'S RECOMMENDATIONS. 2. SELECT FILL BENEATH THE BUILDING SHALL BE PLACED IN LIFTS NOT EXCEEDING 8" LOOSE THICKNESS AND COMPACTED TO AT LEAST 98% OF STANDARD PROCTOR DRY DENSITY (ASTM D 698).

SPREAD FOOTINGS (31-24-50)

- 1. BOTTOM OF FOOTING ELEVATIONS (BF) SHOWN ON THE PLANS ARE FOR ESTIMATING PURPOSES ONLY AND ARE NOT NECESSARILY TO BE USED FOR CONSTRUCTION. THE SOILS ENGINEER OR HIS REPRESENTATIVE SHALL BE ENGAGED TO INSPECT ALL FOOTING EXCAVATIONS TO VERIFY THAT THE REQUIRED ALLOWABLE BEARING CAPACITY IS ATTAINABLE.

RETAINING WALLS (32-32-13)

- 1. ALL RETAINING WALLS SHALL HAVE A PROPERLY INSTALLED DRAINAGE SYSTEM TO RELIEVE HYDROSTATIC PRESSURE. 2. BACKFILL BOTH SIDES OF WALLS EQUALLY UNTIL LOW SIDE IS UP TO GRADE.

CAST-IN-PLACE CONCRETE MIX DESIGN TABLE

Table with 4 columns: Item, Min. Cement, Max. Permissible W/C Ratio, and Max. Slump. Includes rows for 3000, 4000, and 5000 psi concrete.

CAST-IN-PLACE CONCRETE MIX DESIGN TABLE

Table with 4 columns: Item, Min. Cement, Max. Permissible W/C Ratio, and Max. Slump. Includes rows for 3000, 4000, and 5000 psi concrete.

CAST-IN-PLACE CONCRETE MIX DESIGN TABLE

Table with 4 columns: Item, Min. Cement, Max. Permissible W/C Ratio, and Max. Slump. Includes rows for 3000, 4000, and 5000 psi concrete.

CAST-IN-PLACE CONCRETE MIX DESIGN TABLE

Table with 4 columns: Item, Min. Cement, Max. Permissible W/C Ratio, and Max. Slump. Includes rows for 3000, 4000, and 5000 psi concrete.

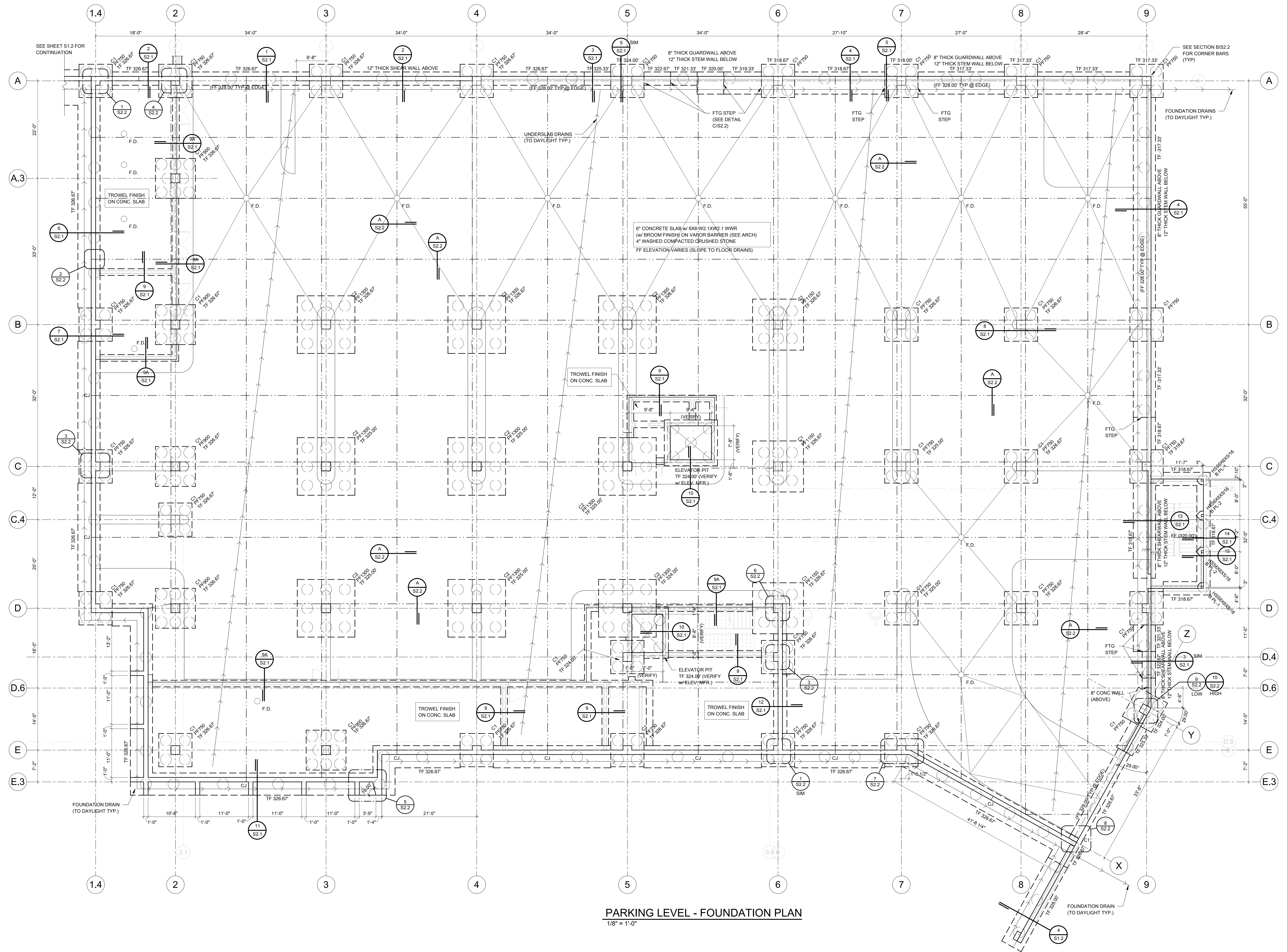
CAST-IN-PLACE CONCRETE MIX DESIGN TABLE

Table with 4 columns: Item, Min. Cement, Max. Permissible W/C Ratio, and Max. Slump. Includes rows for 3000, 4000, and 5000 psi concrete.

Project Title: FIRST NATIONAL BANK HILLTOP BRANCH & OFFICE BUILDING. Notes and Legends. WITTENBERG, DELONY & DAVIDSON ARCHITECTS. Engineering Consultants, Inc. Structural Engineers. 401 West Capitol Avenue, Suite 305 Little Rock, Arkansas 72202-4401. Phone No: (501) 376-3752 Fax No: (501) 376-7314. JOB# 16-175



REV. NO.	DATE	DESCRIPTION
09/19/16		
JOB NO	16-028	



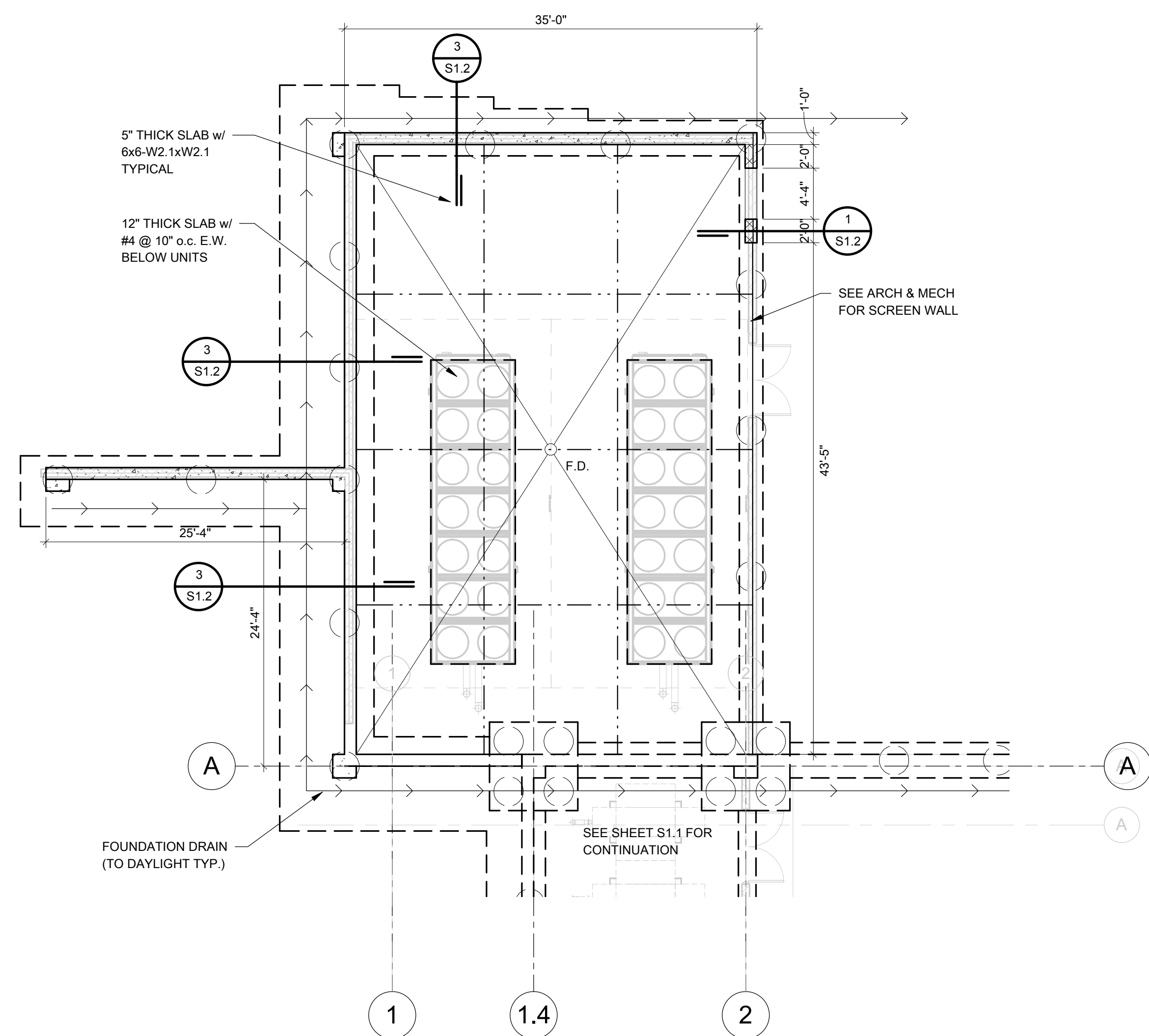
**PARKING LEVEL - FOUNDATION PLAN**  
 1/8" = 1'-0"

PAD FOOTING SCHEDULE						
TYPE	WIDTH	LENGTH	THICKNESS	REINFORCING	LOADS (KIPS)	
PF750	7'-6"	7'-6"	2'-0"	(11) #8 EACH WAY BOTTOM	DL=130 LL=130	
PF150	9'-0"	9'-0"	2'-4"	(11) #9 EACH WAY BOTTOM	DL=200 LL=195	
PF1150	11'-6"	11'-6"	3'-0"	(14) #10 EACH WAY BOTTOM	DL=330 LL=310	
PF1300	13'-0"	13'-0"	3'-0"	(18) #10 EACH WAY BOTTOM	DL=465 LL=365	

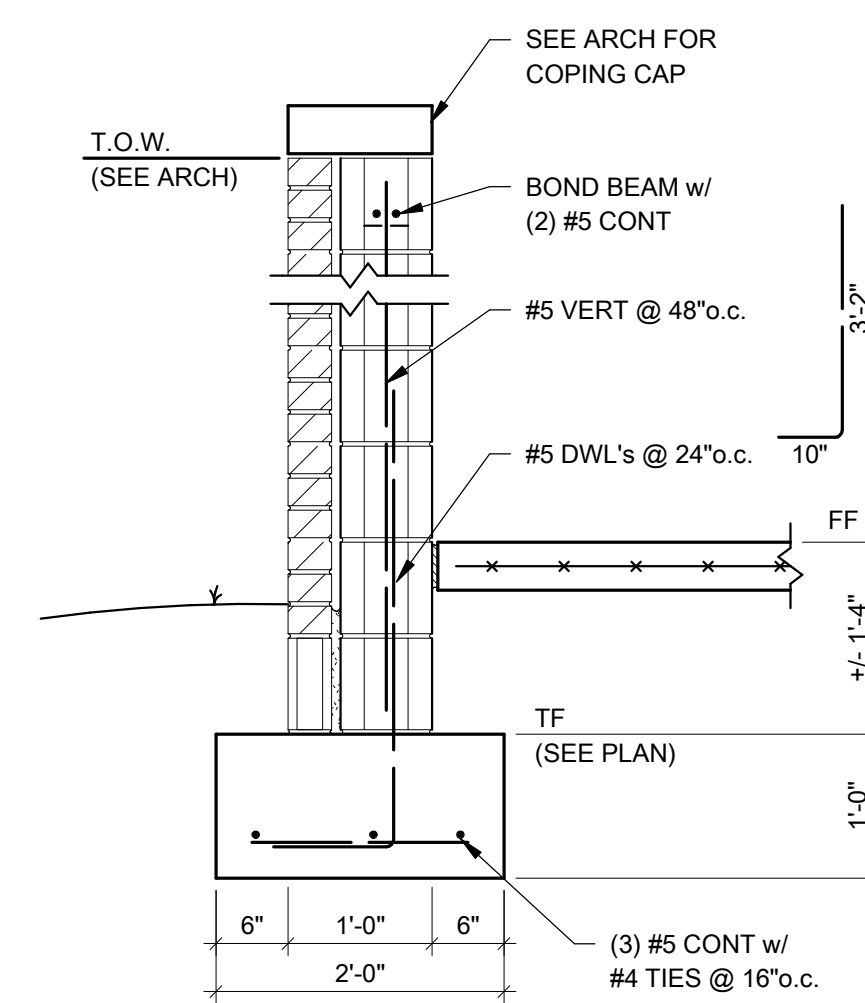
Engineering Consultants, Inc.  
 Structural Engineers  
 401 West Capitol Avenue, Suite 305  
 Little Rock, Arkansas 72201-3401  
 Phone No: (501) 376-3752  
 Fax No: (501) 376-7314  
 No. 8953  
 No. 25  
 STATE OF ARKANSAS  
 REGISTERED PROFESSIONAL ENGINEER

Cloud/Reference Sheet Metric (P) First National Bank ASD.ctb  
 9/19/2016 11:27:34 AM

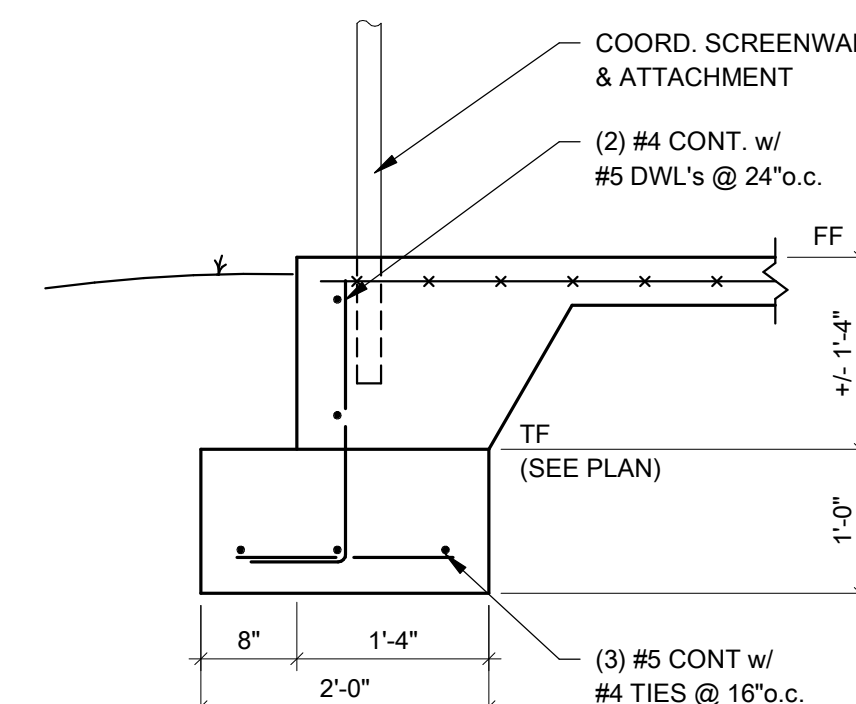




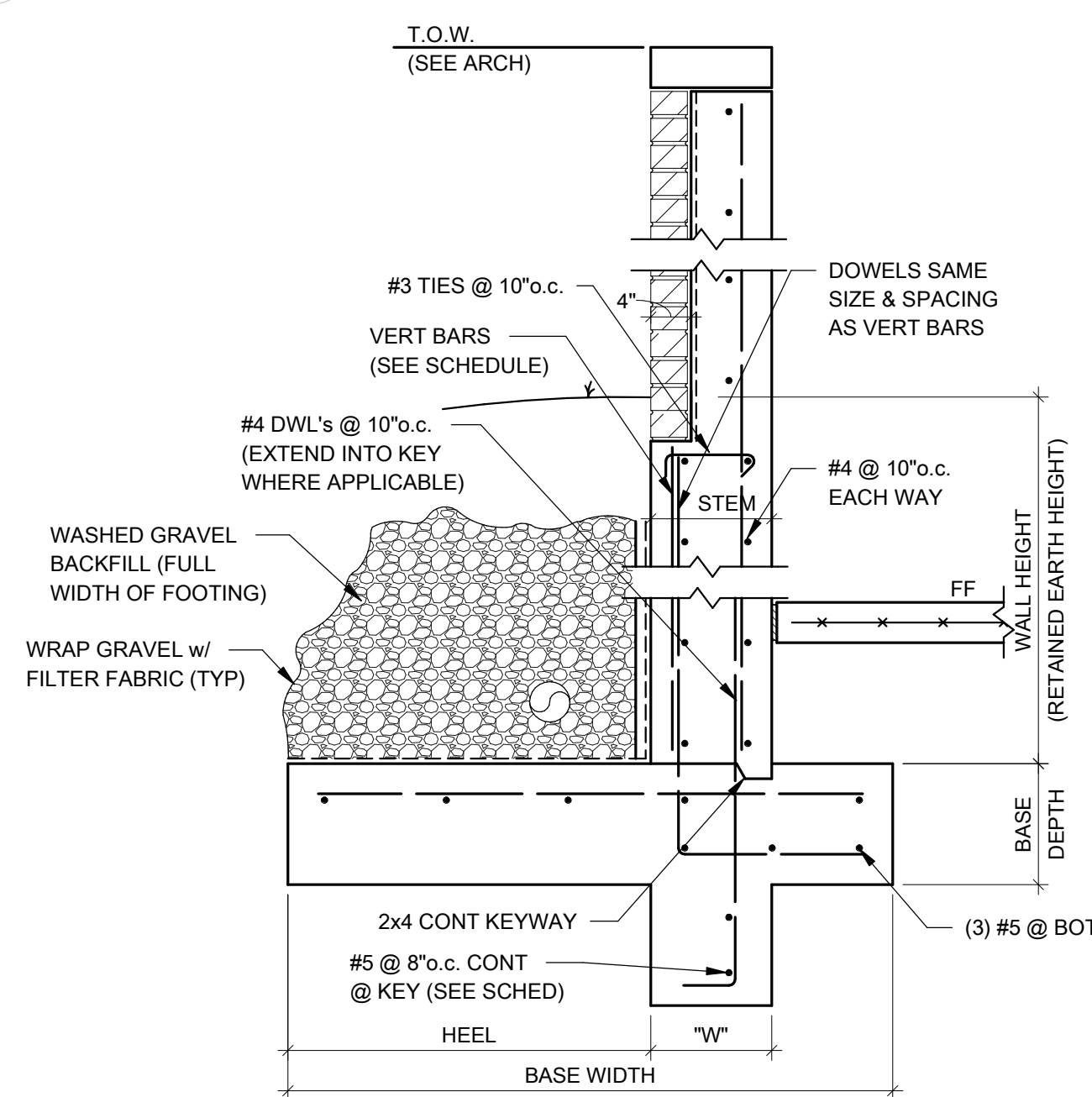
**A MECH ENCLOSURE FOUNDATION PLAN**  
1/8" = 1'-0"



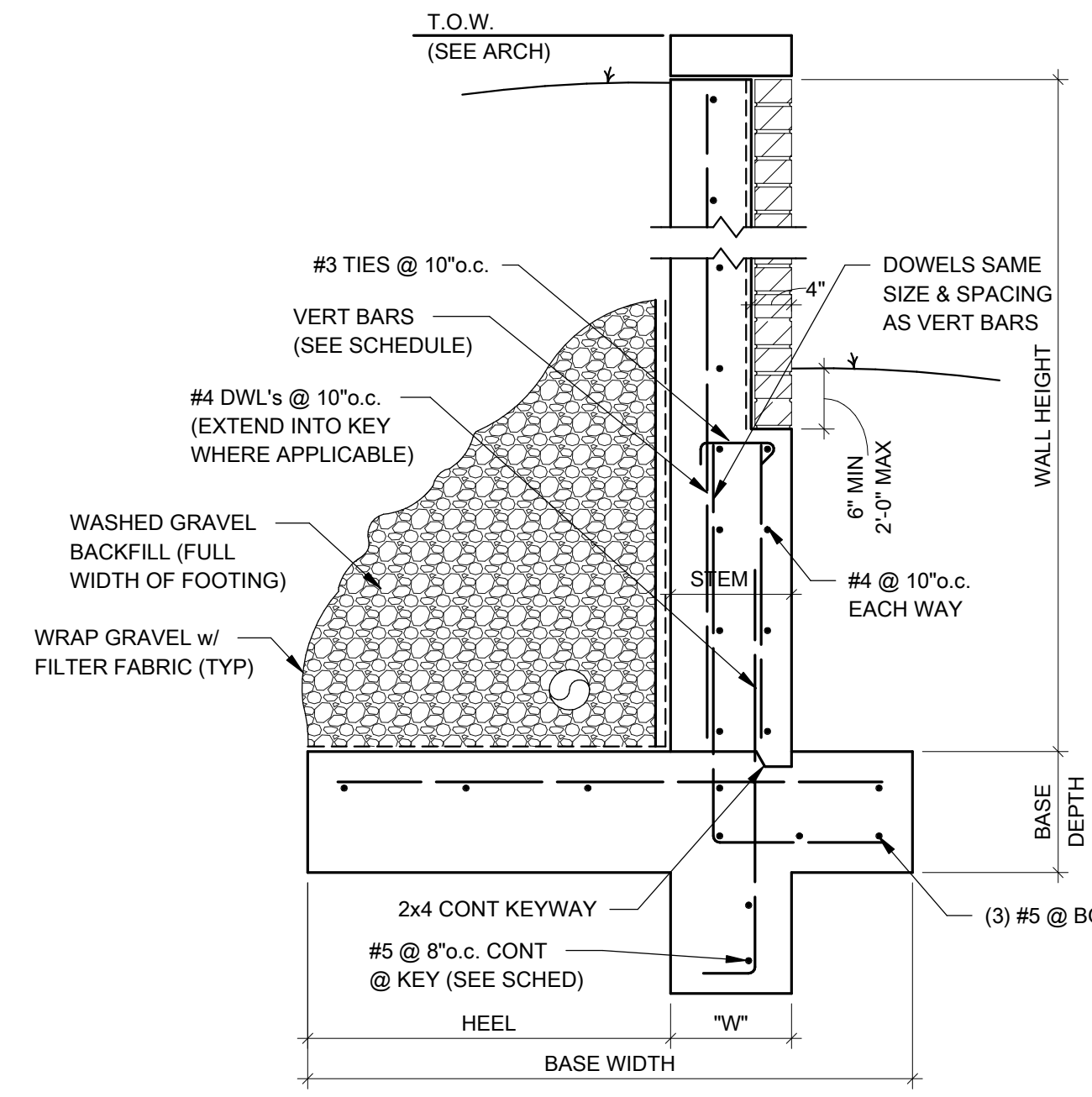
**1 SECTION**  
3/4" = 1'-0"



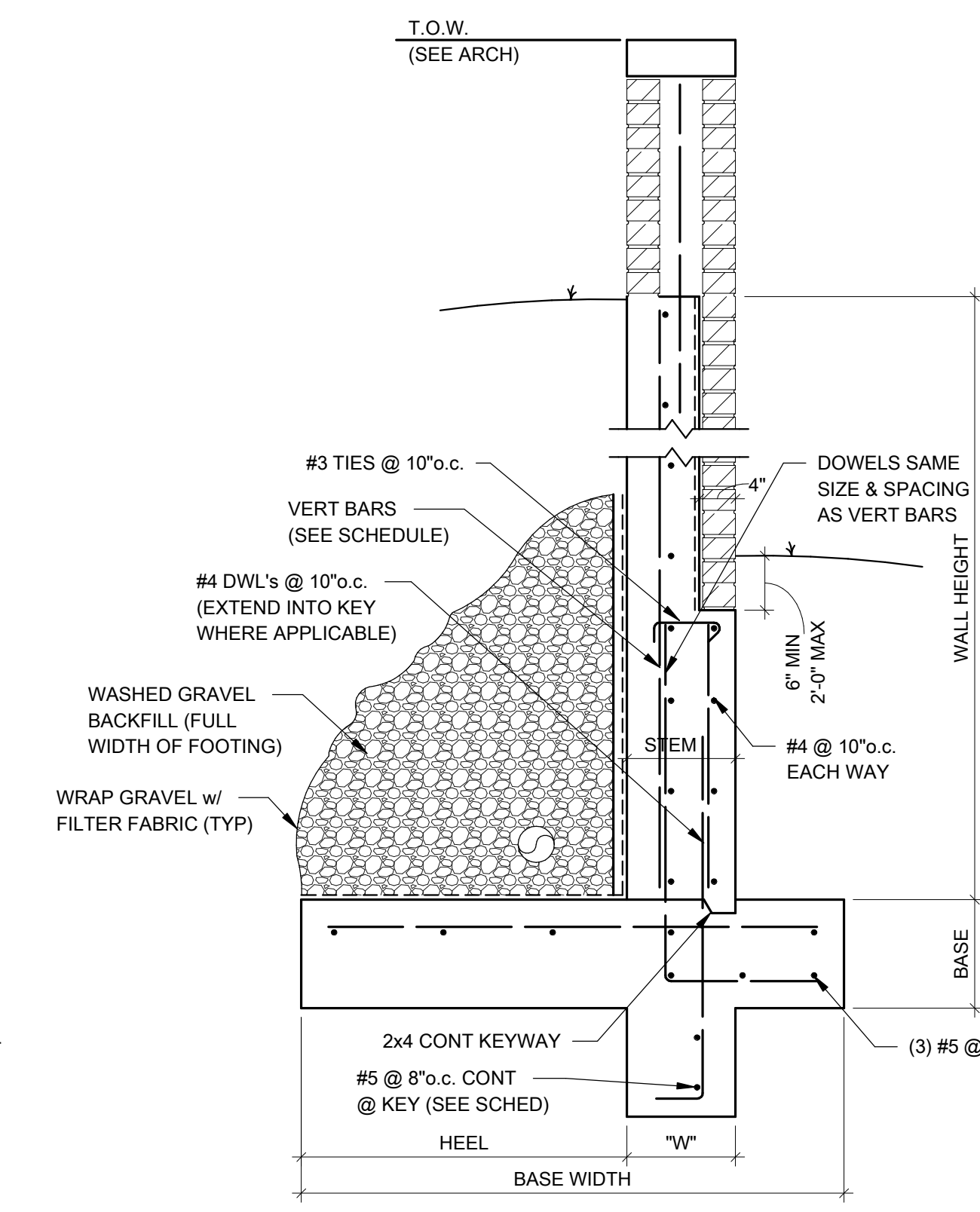
**2 SECTION**  
3/4" = 1'-0"



**3 SECTION**  
3/4" = 1'-0"



**4 SECTION**  
3/4" = 1'-0"



**5 SECTION**  
3/4" = 1'-0"

USE RETAINING WALL SCHEDULE  
BELOW FOR SECTIONS 3, 4 & 5

WALL HEIGHT	BASE		HEEL	STEM	VERT BARS	INSIDE BAR LAP	KEY	
	WIDTH	DEPTH					W	L
0' TO 4'-0"	4'-0"	1'-0"	2'-0"	1'-0"	#4 @ 10"o.c.	2'-4"	N/A	N/A
4'-1" TO 6'-0"	5'-0"	1'-0"	3'-0"	1'-0"	#4 @ 10"o.c.	2'-4"	1'-0"	1'-0"
6'-1" TO 8'-0"	6'-0"	1'-0"	4'-0"	1'-0"	#5 @ 10"o.c.	3'-0"	1'-0"	1'-0"
8'-1" TO 10'-0"	7'-0"	1'-0"	4'-4"	1'-0"	#6 @ 10"o.c.	3'-6"	1'-0"	1'-6"
10'-1" TO 13'-0"	8'-0"	1'-6"	4'-6"	1'-4"	#7 @ 10"o.c.	4'-0"	1'-4"	1'-6"

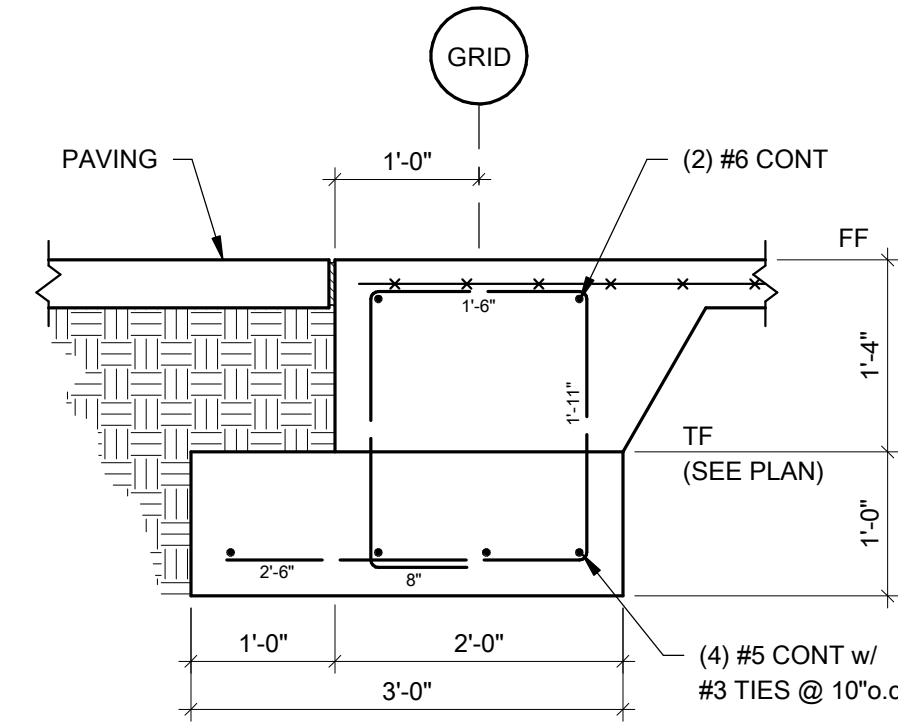
**Engineering Consultants, Inc.**  
Structural Engineers

401 West Capitol Avenue, Suite 305  
Little Rock, Arkansas 72201-3401  
Phone No: (501) 376-3752  
Fax No: (501) 376-7314

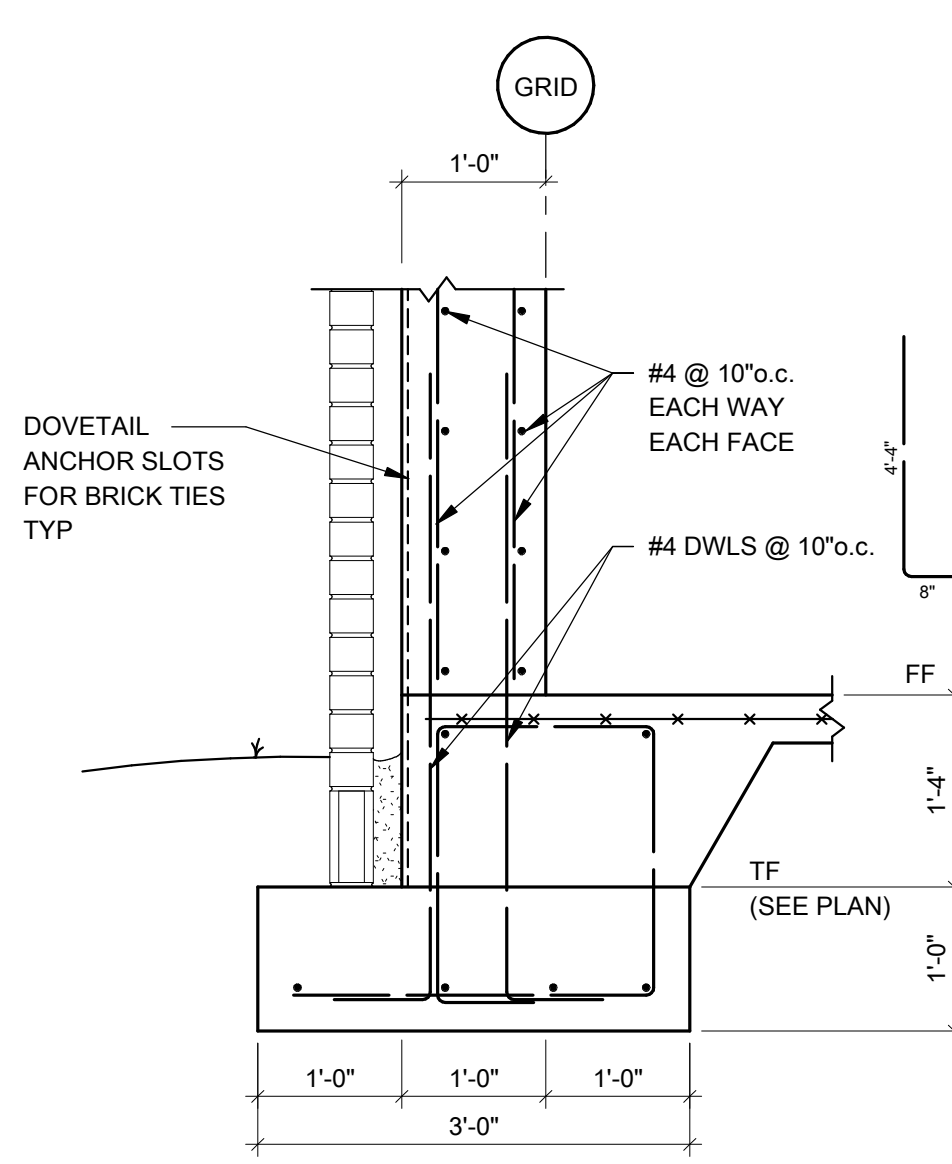
9/19/2016

**STATE OF ARKANSAS**  
REGISTERED PROFESSIONAL ENGINEER  
No. 8903

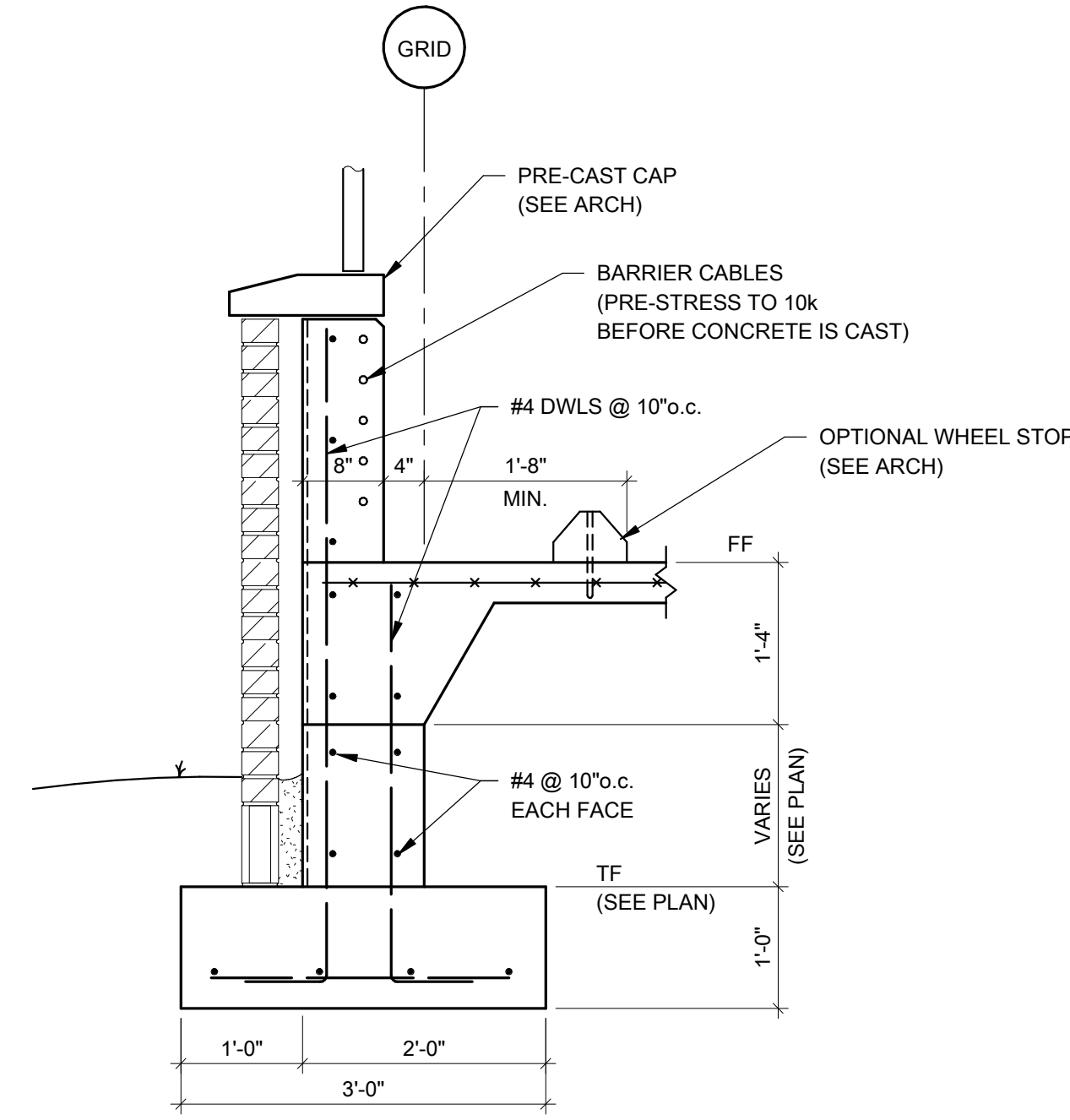




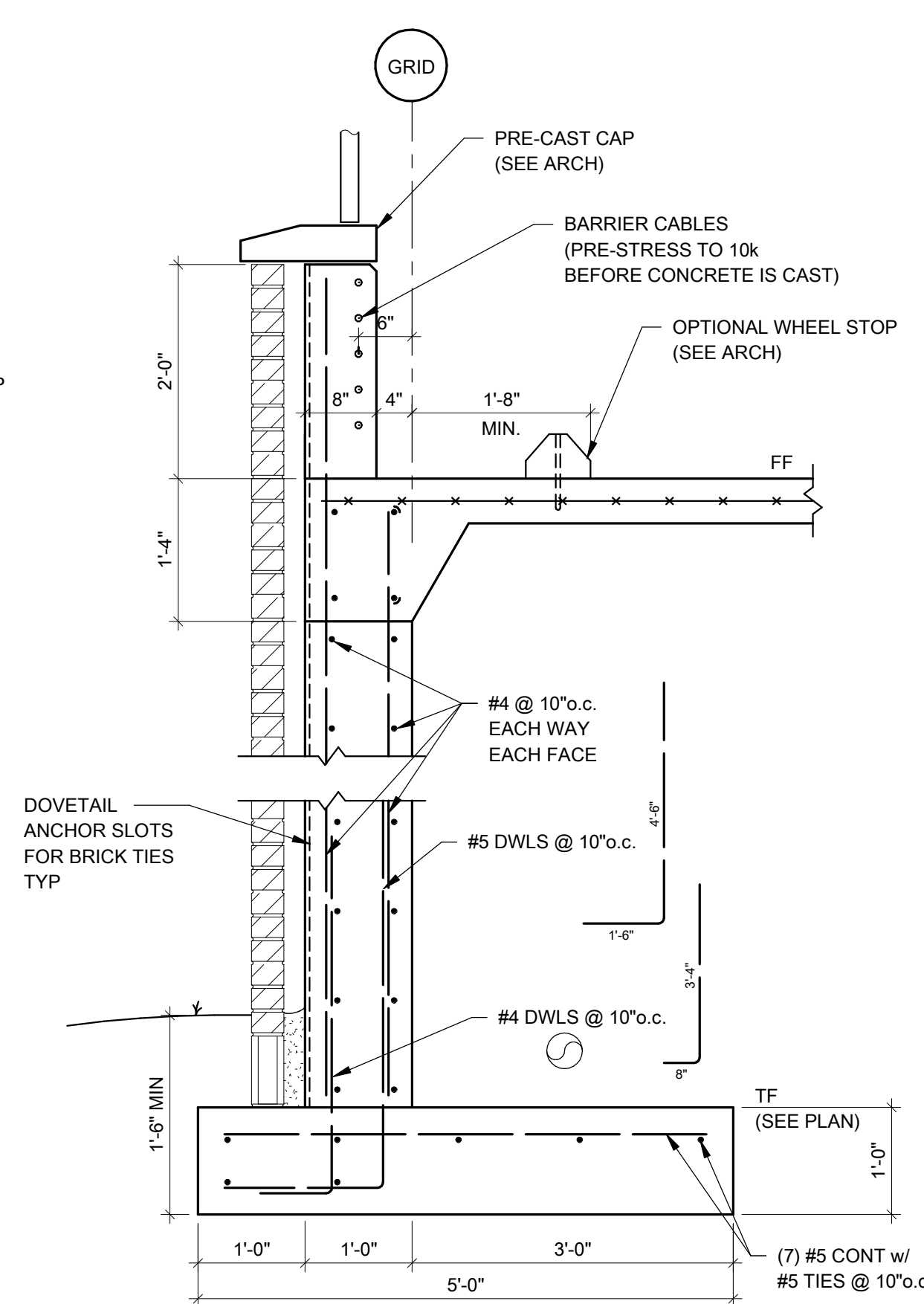
1 SECTION  
3/4" = 1'-0"



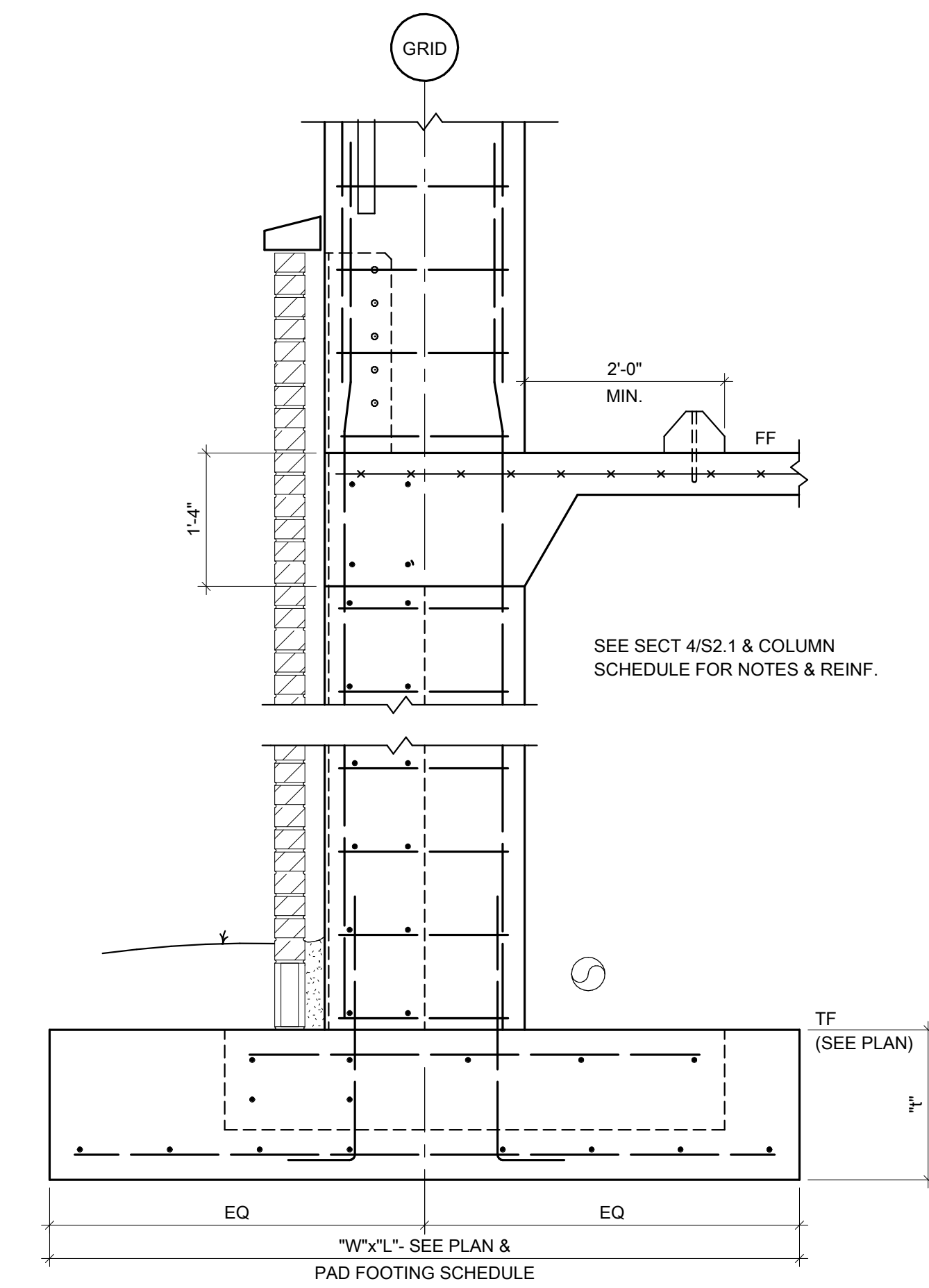
2 SECTION  
3/4" = 1'-0"



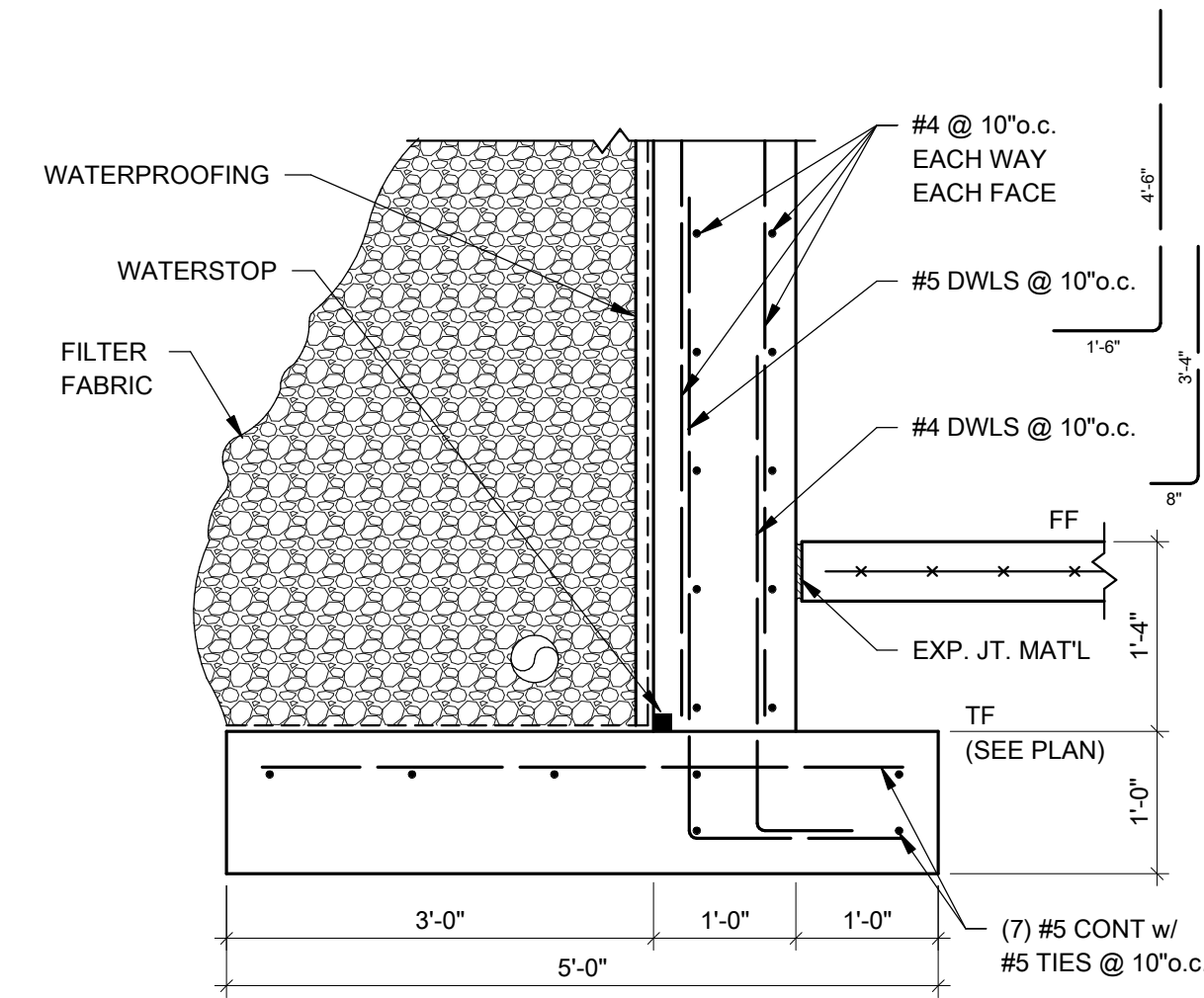
3 SECTION  
3/4" = 1'-0"



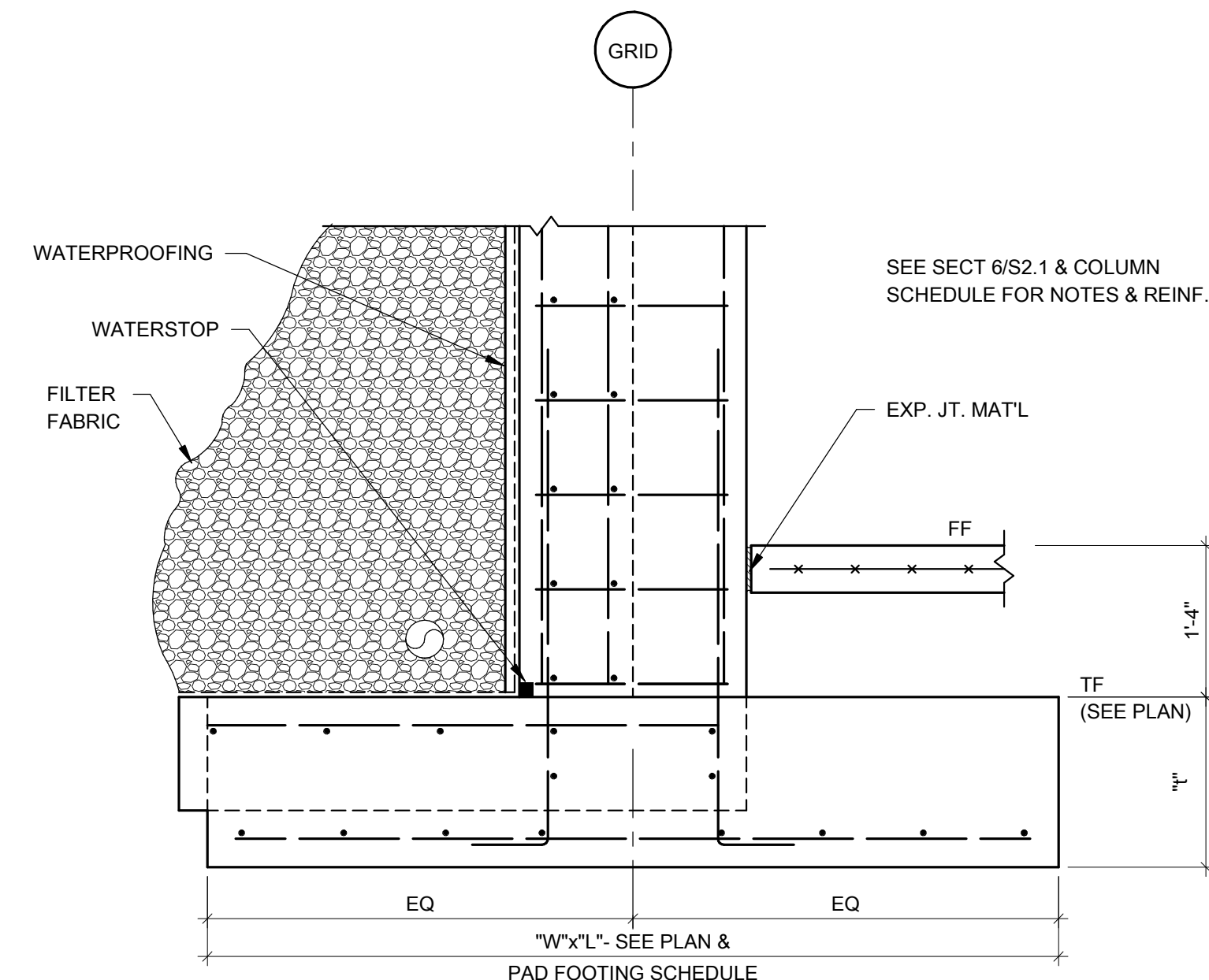
4 SECTION  
3/4" = 1'-0"



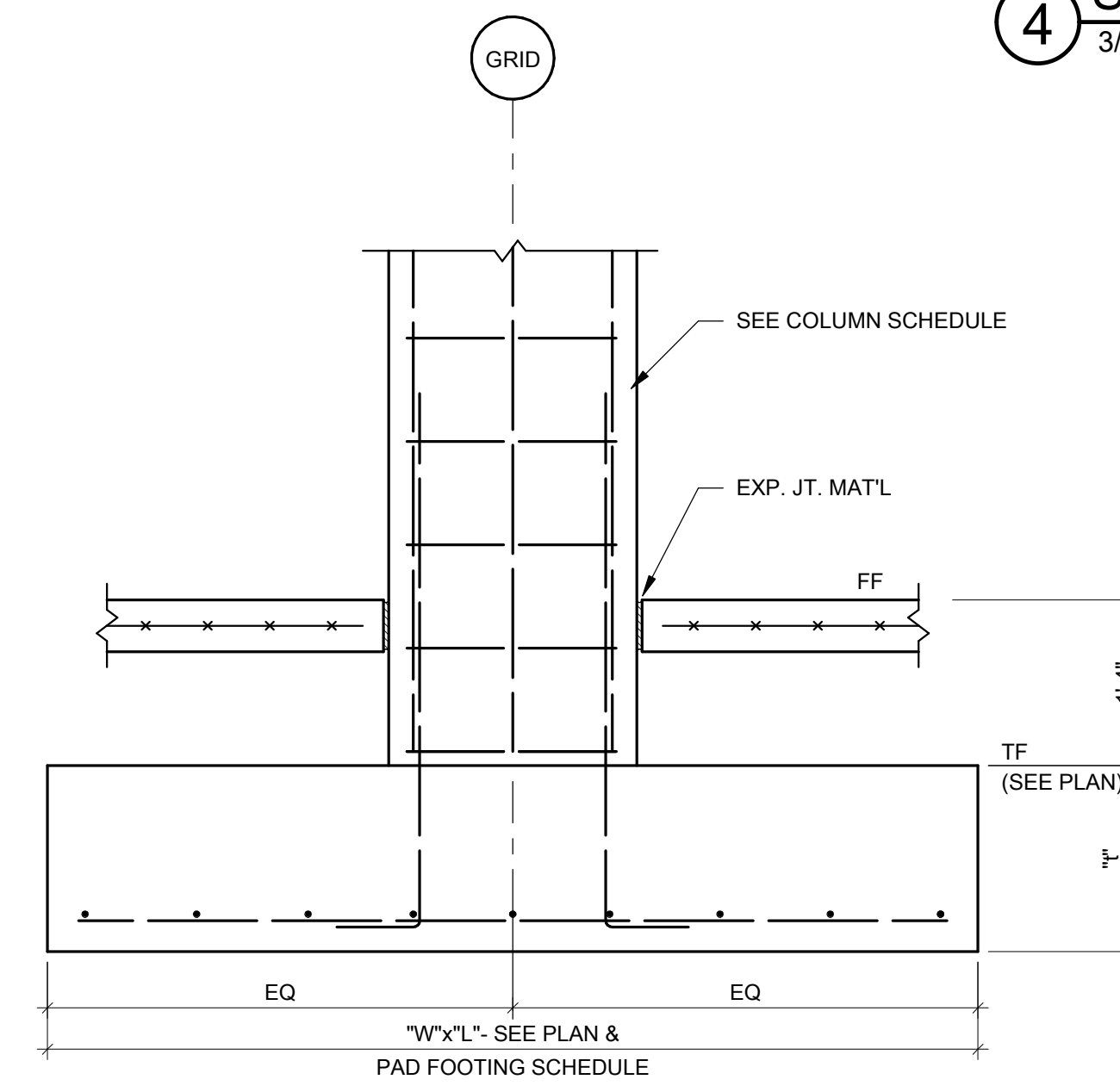
5 SECTION  
3/4" = 1'-0"



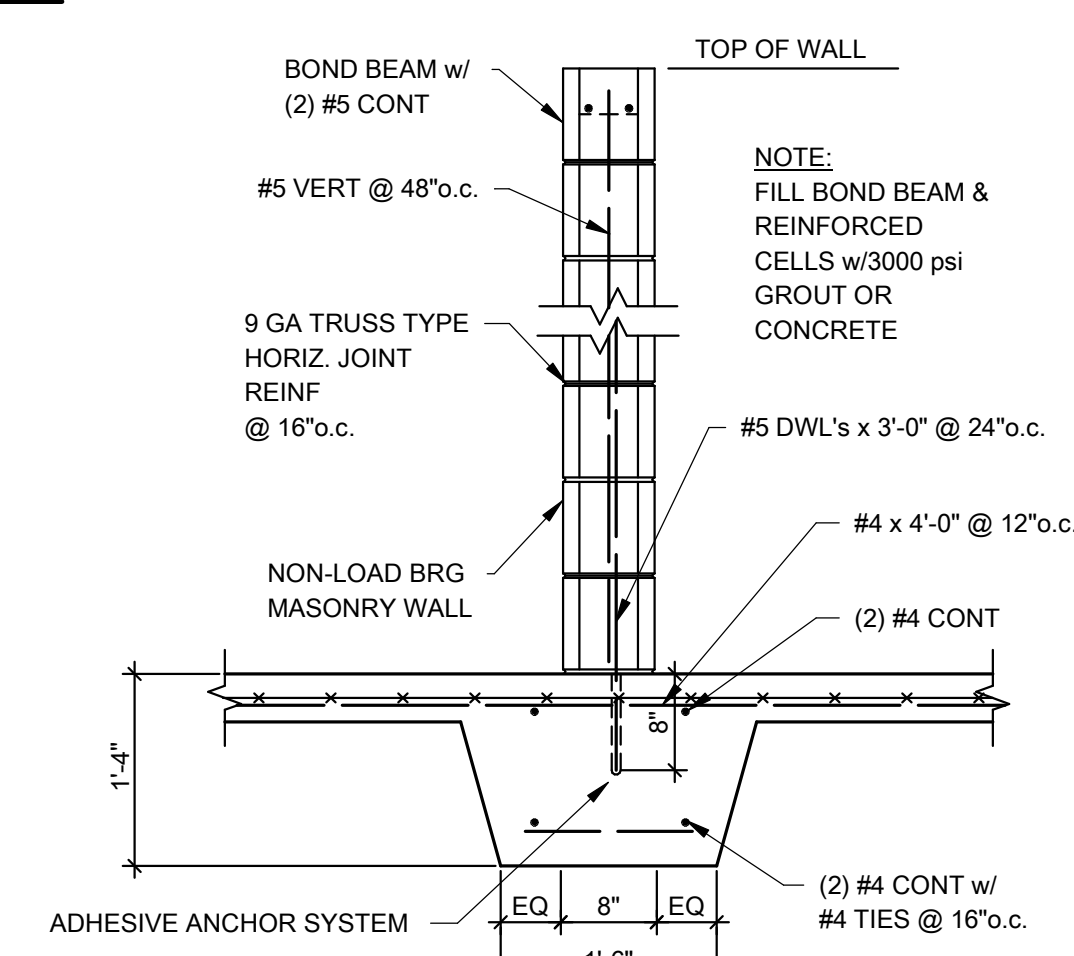
6 SECTION  
3/4" = 1'-0"



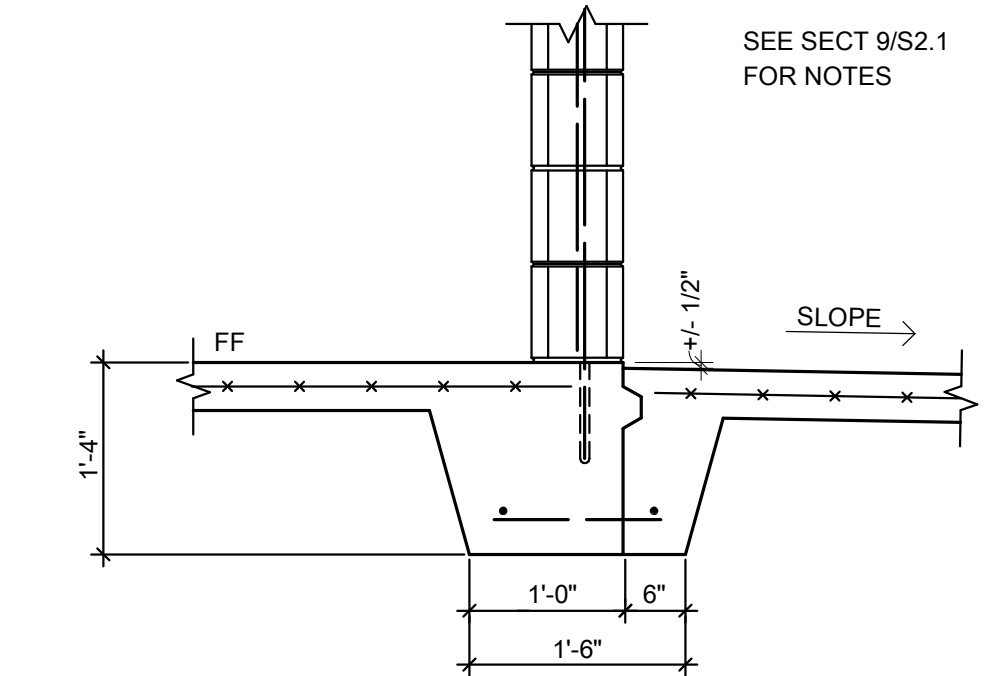
7 SECTION  
3/4" = 1'-0"



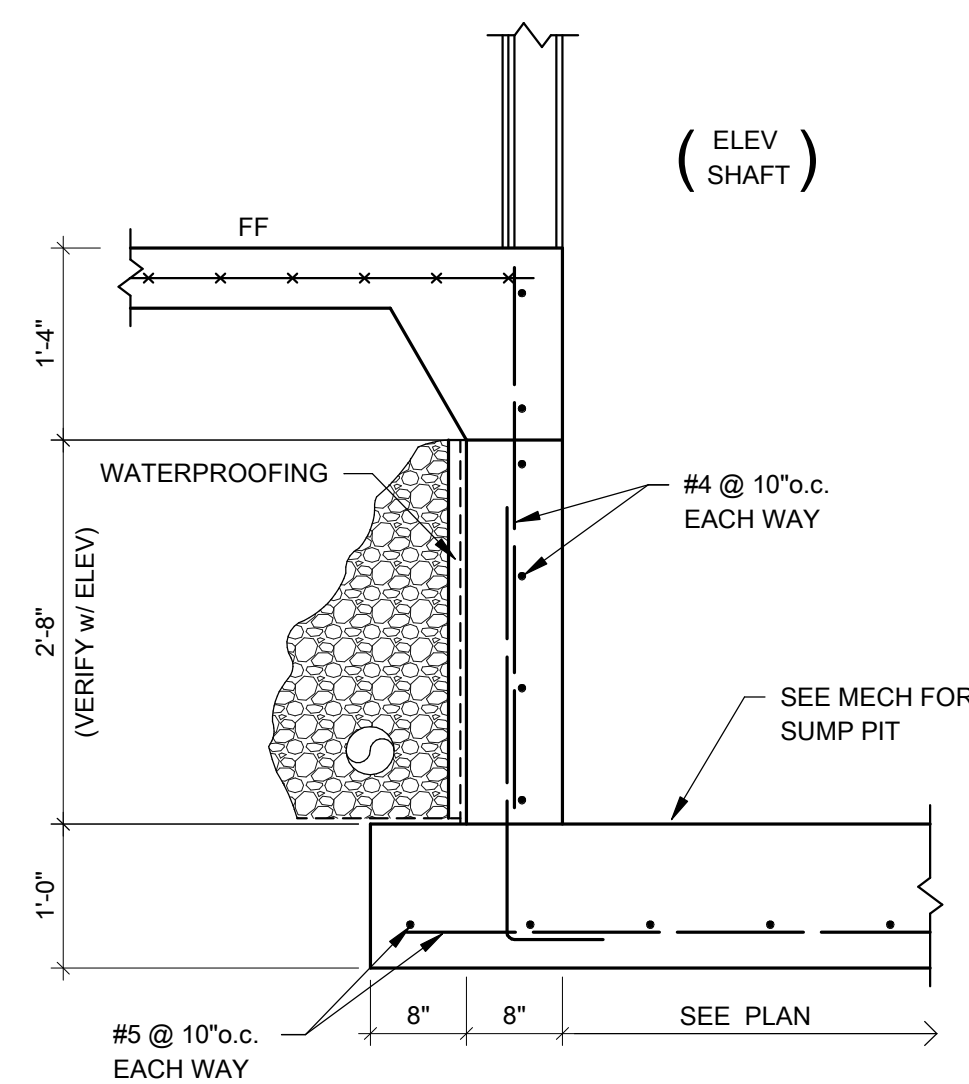
8 SECTION  
3/4" = 1'-0"



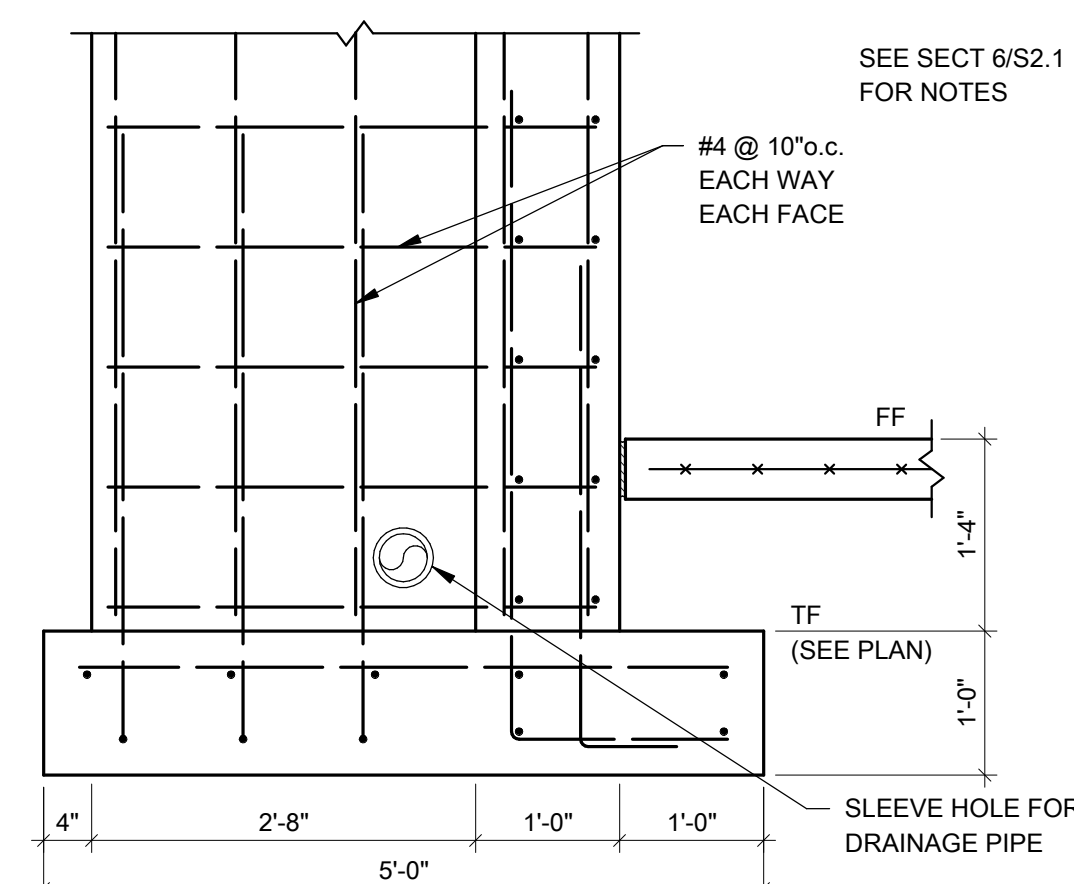
9 THICKENED SLAB DETAIL (TYP)  
3/4" = 1'-0"



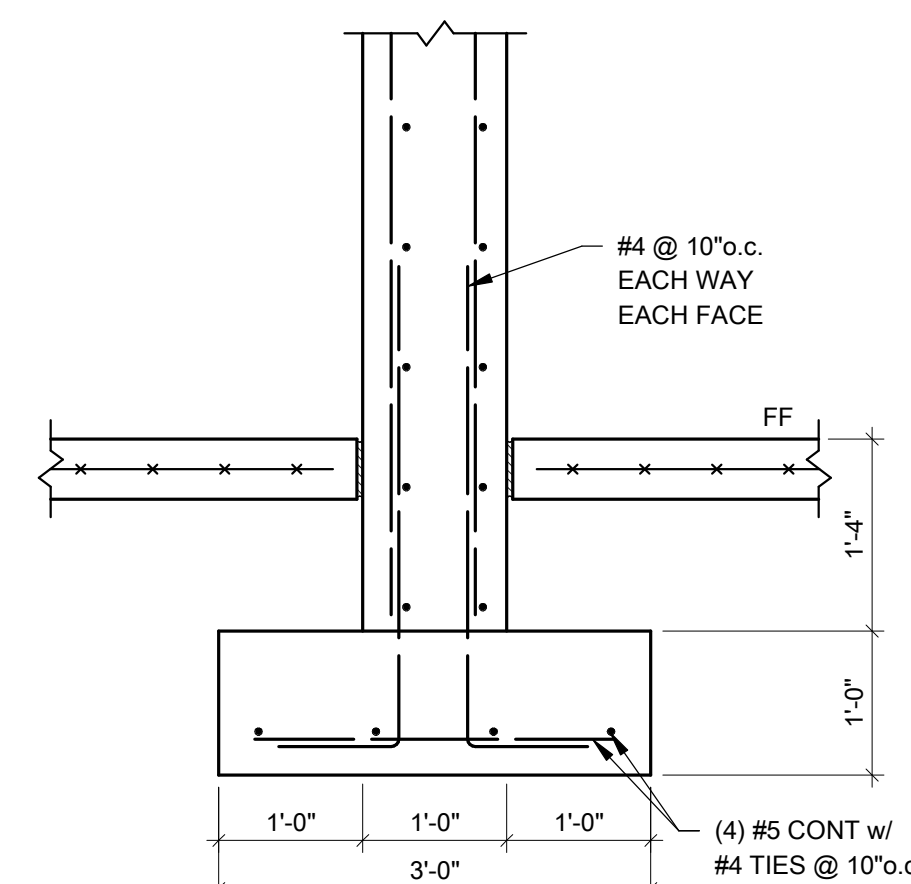
9A THICKENED SLAB w/ CJ DETAIL  
3/4" = 1'-0"



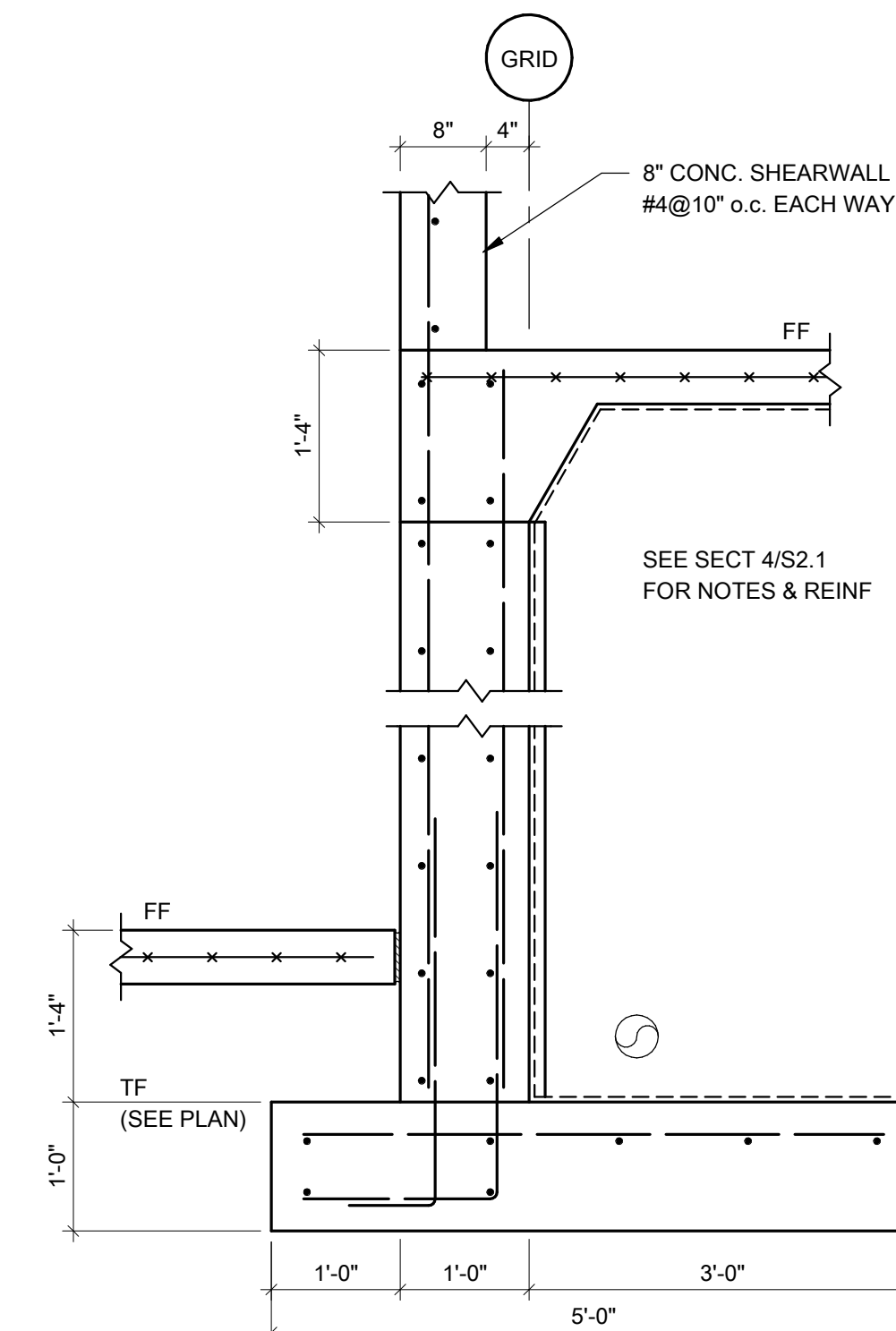
10 SECTION  
3/4" = 1'-0"



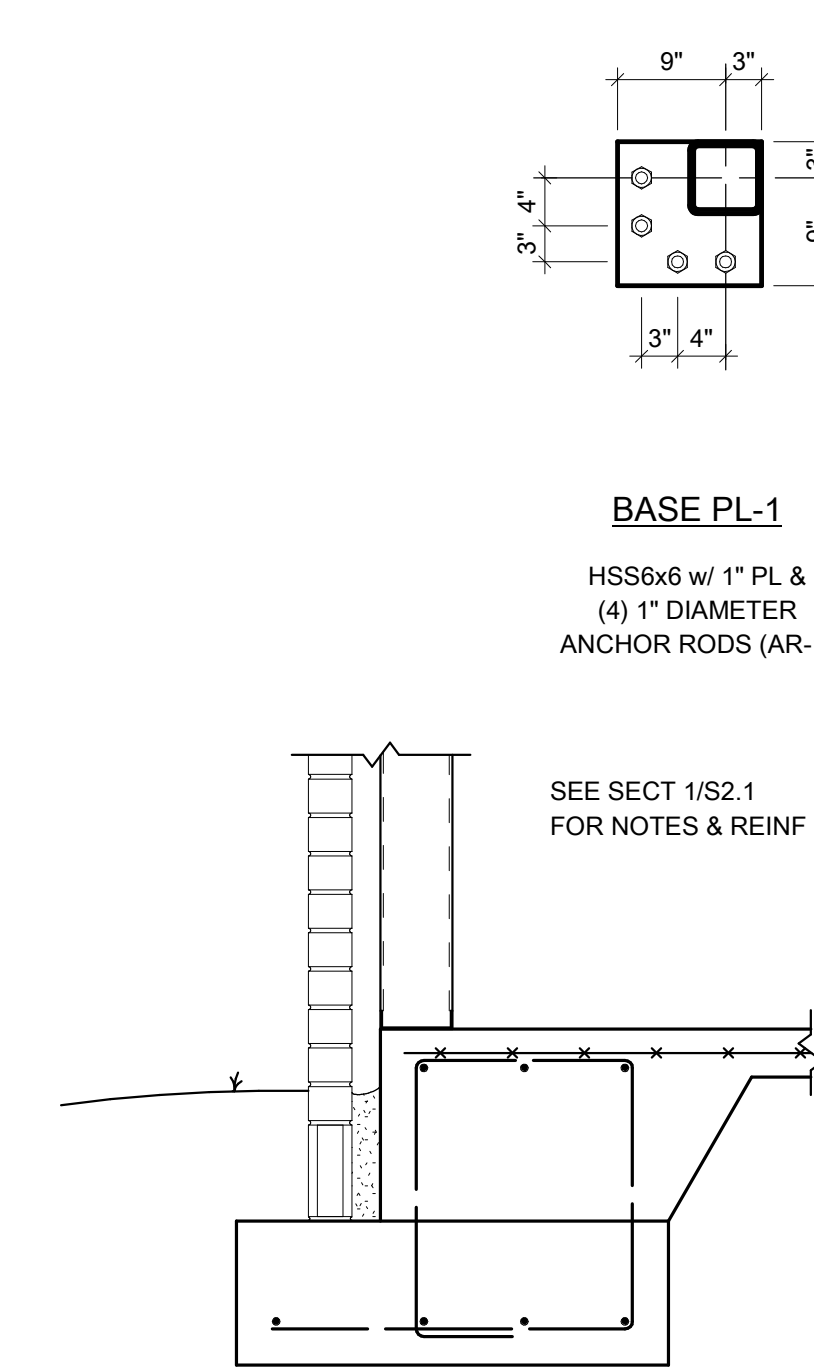
11 SECTION  
3/4" = 1'-0"



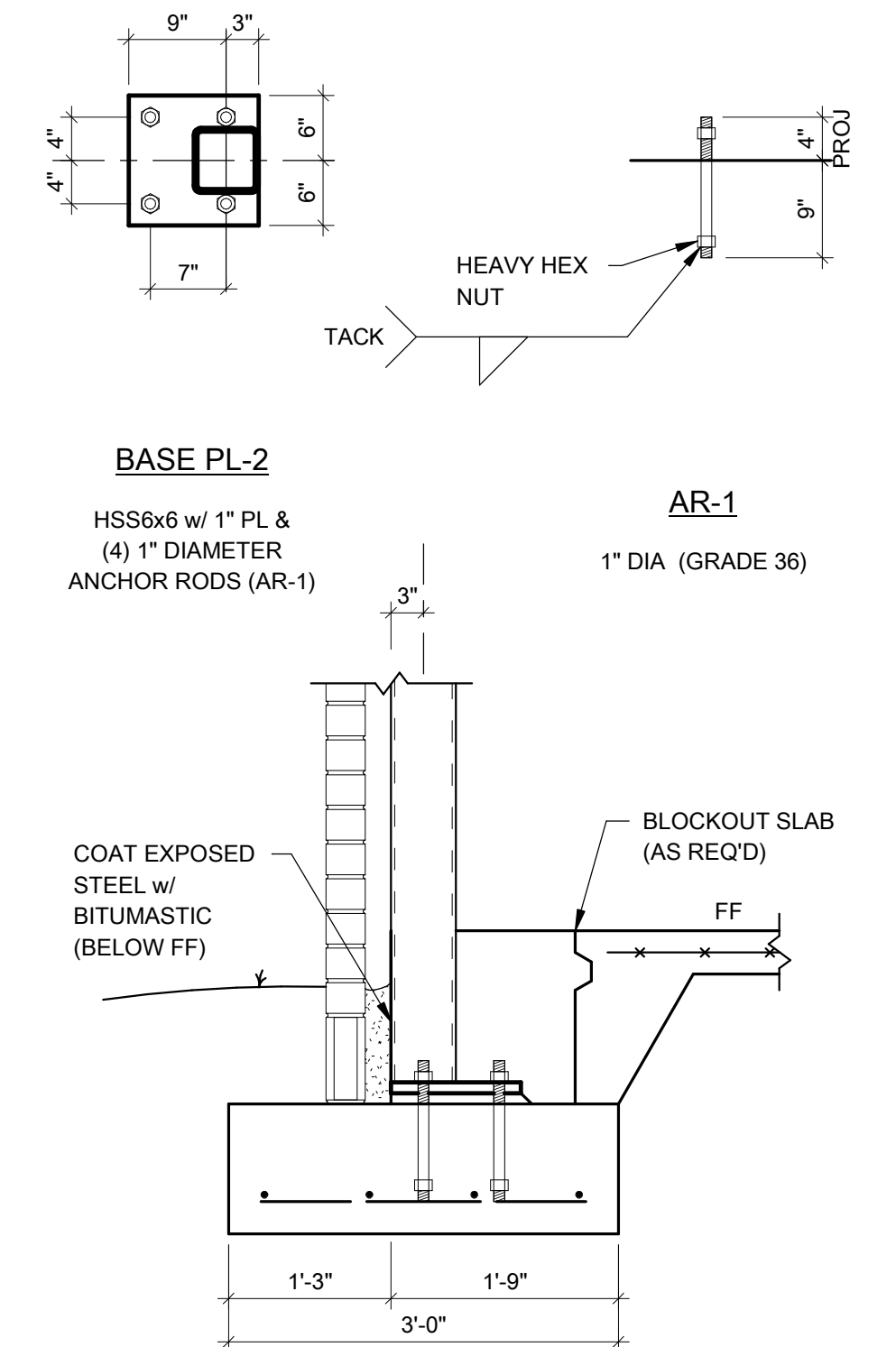
12 SECTION  
3/4" = 1'-0"



13 SECTION  
3/4" = 1'-0"



14 SECTION  
3/4" = 1'-0"



15 SECTION  
3/4" = 1'-0"

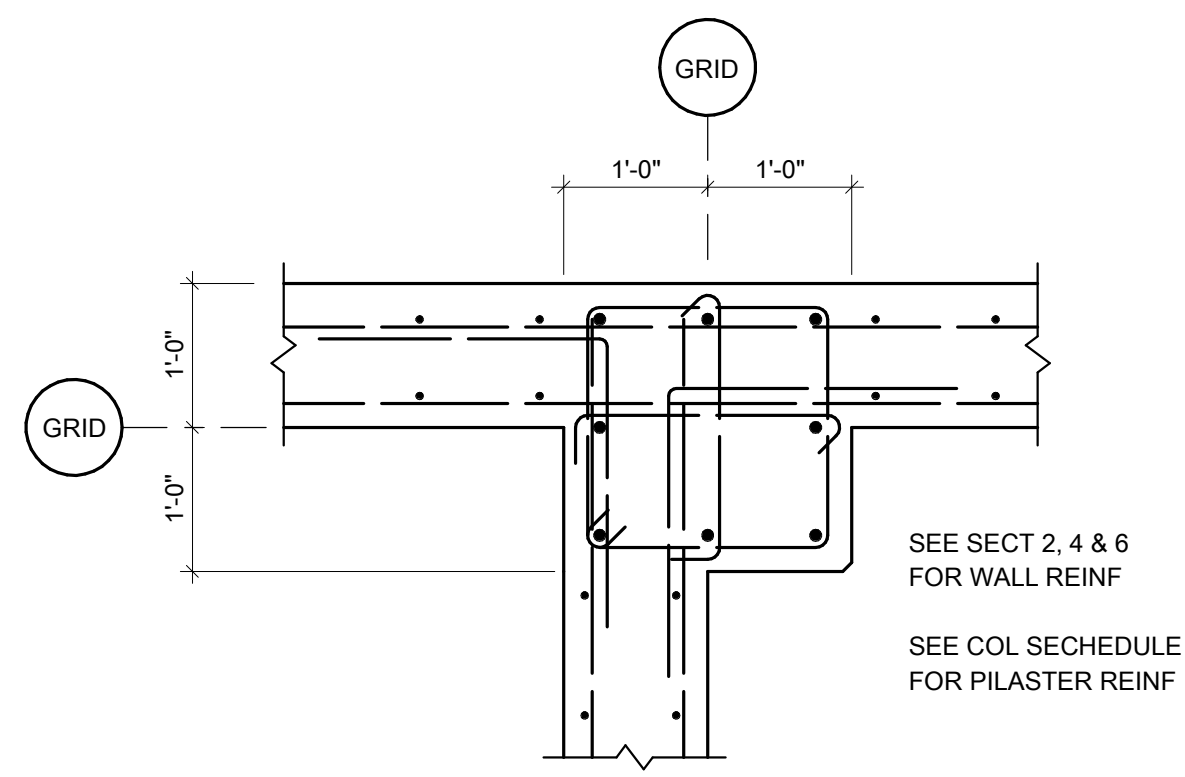
Engineering Consultants, Inc.  
Structural Engineers

401 West Capitol Avenue, Suite 305  
Little Rock, Arkansas 72201-3401  
Phone No: (501) 376-3752  
Fax No: (501) 376-7314

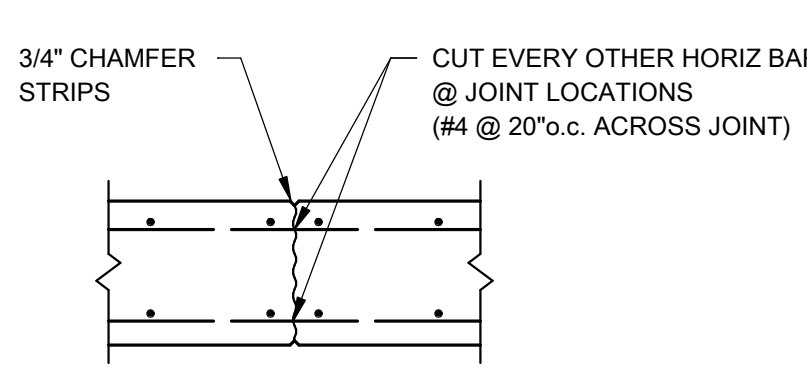
9/19/2016

STATE OF ARKANSAS  
REGISTERED PROFESSIONAL ENGINEER  
No. 8953

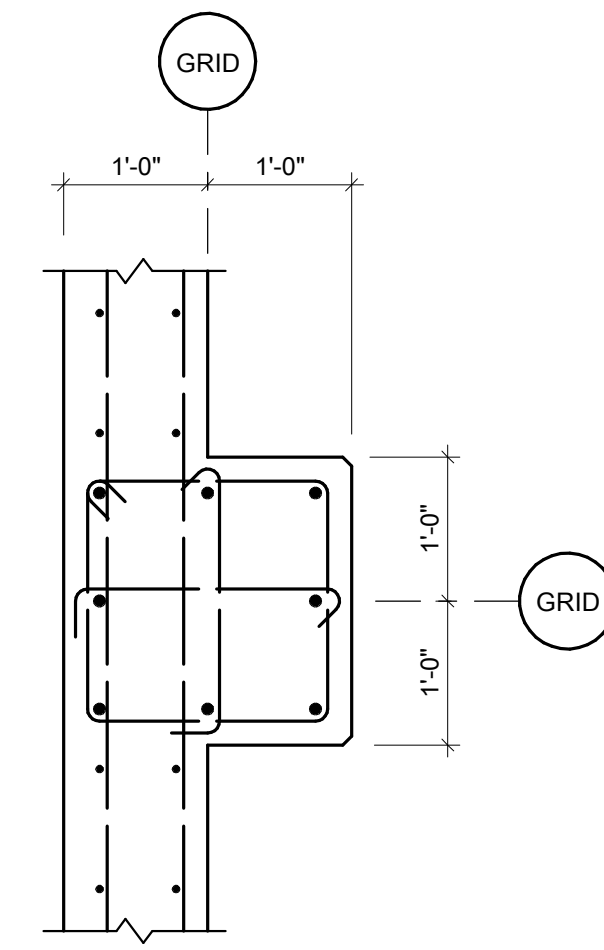




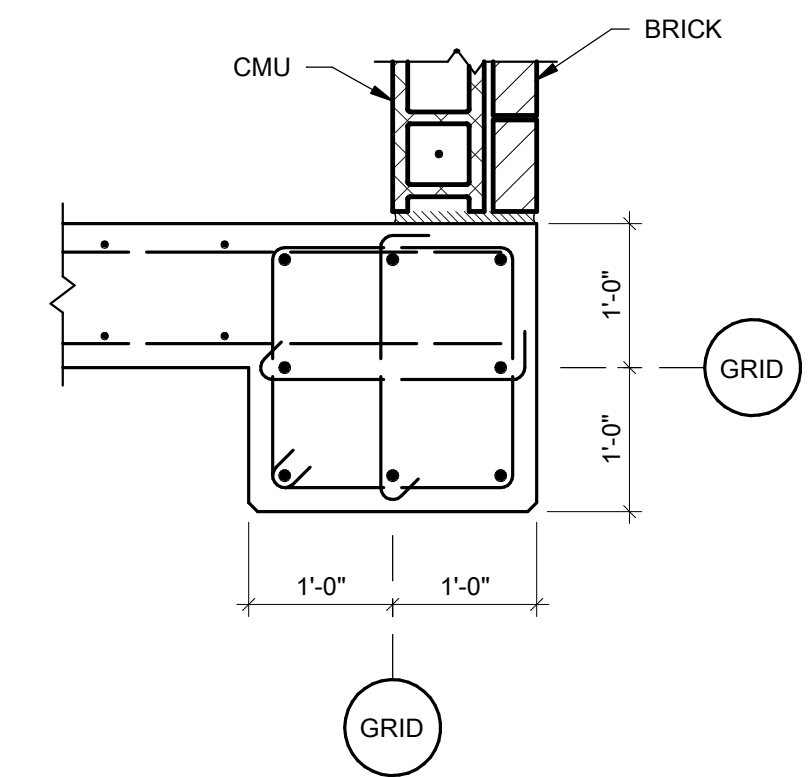
1 PLAN DETAIL  
3/4" = 1'-0"



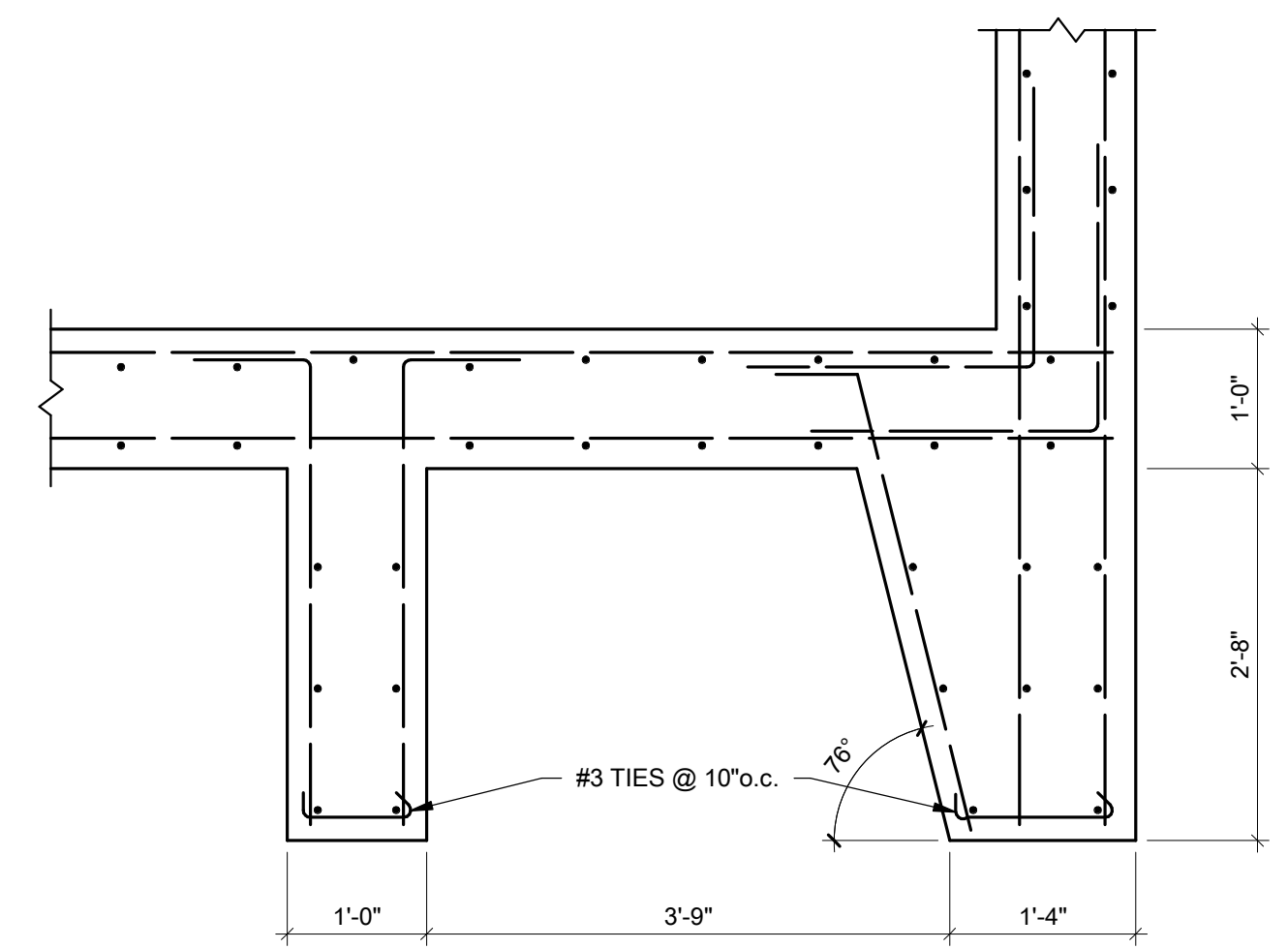
2 WALL C.J. DETAIL  
3/4" = 1'-0"



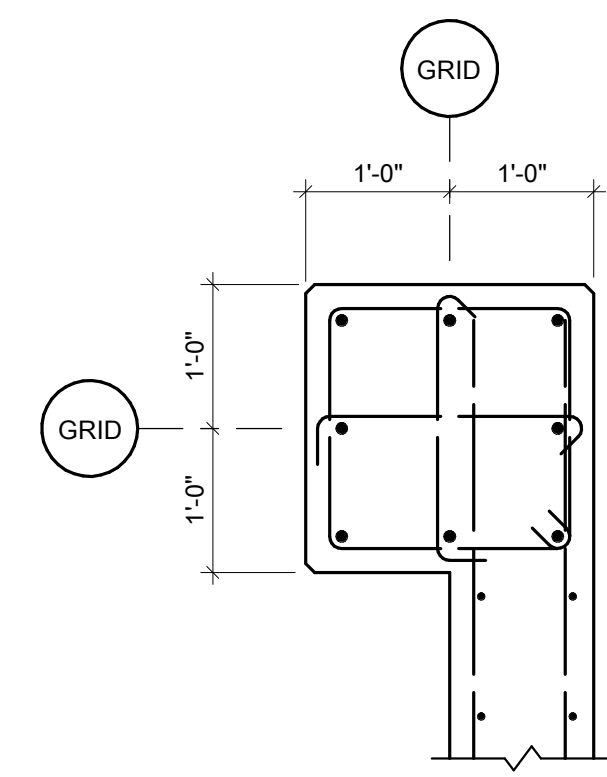
3 PLAN DETAIL  
3/4" = 1'-0"



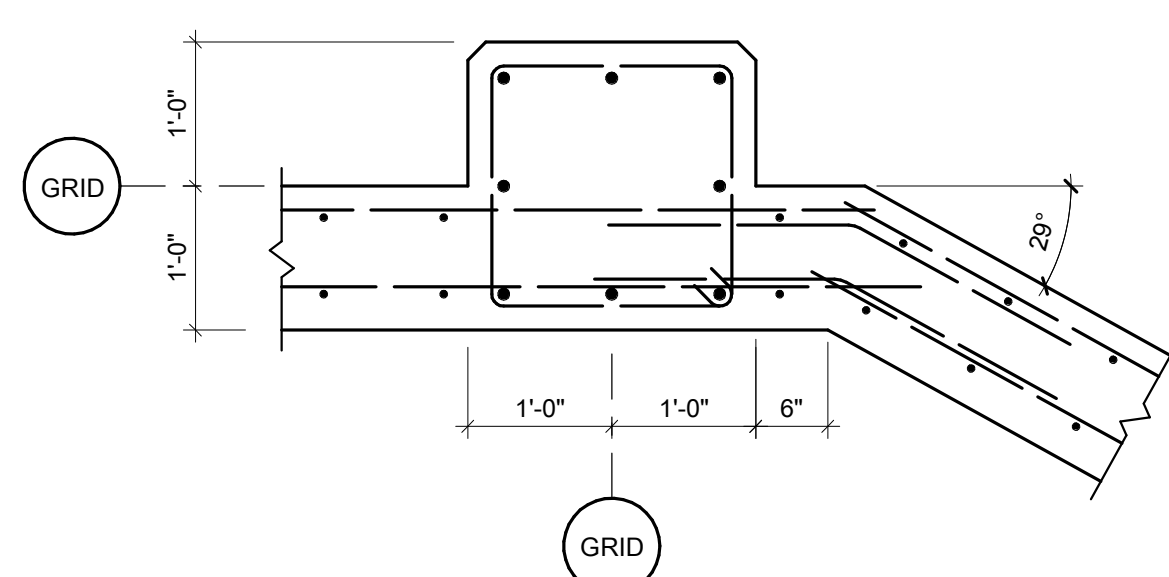
4 PLAN DETAIL  
3/4" = 1'-0"



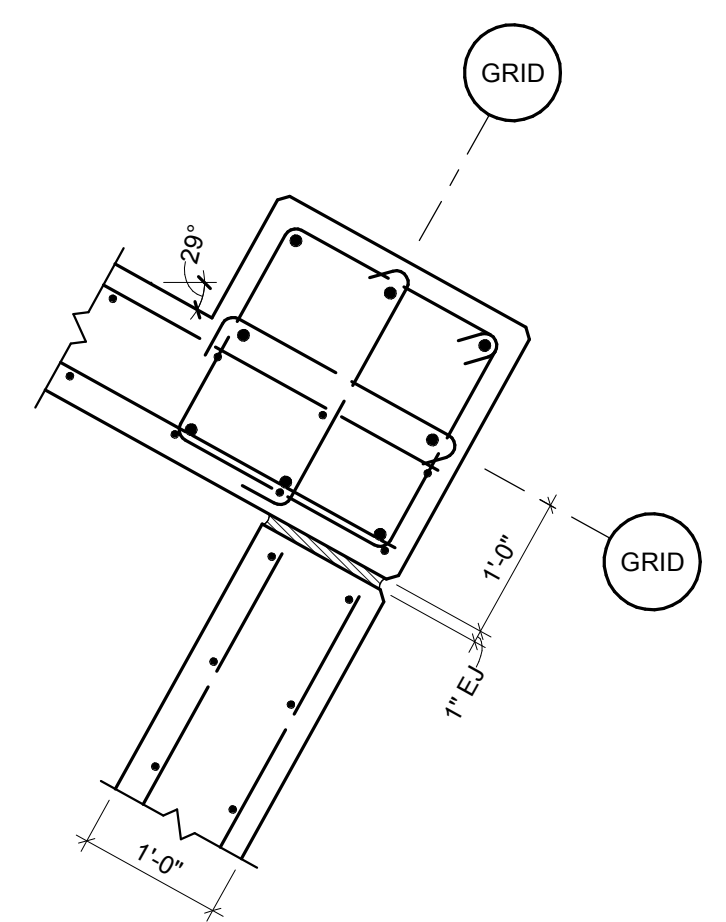
5 PLAN DETAIL  
3/4" = 1'-0"



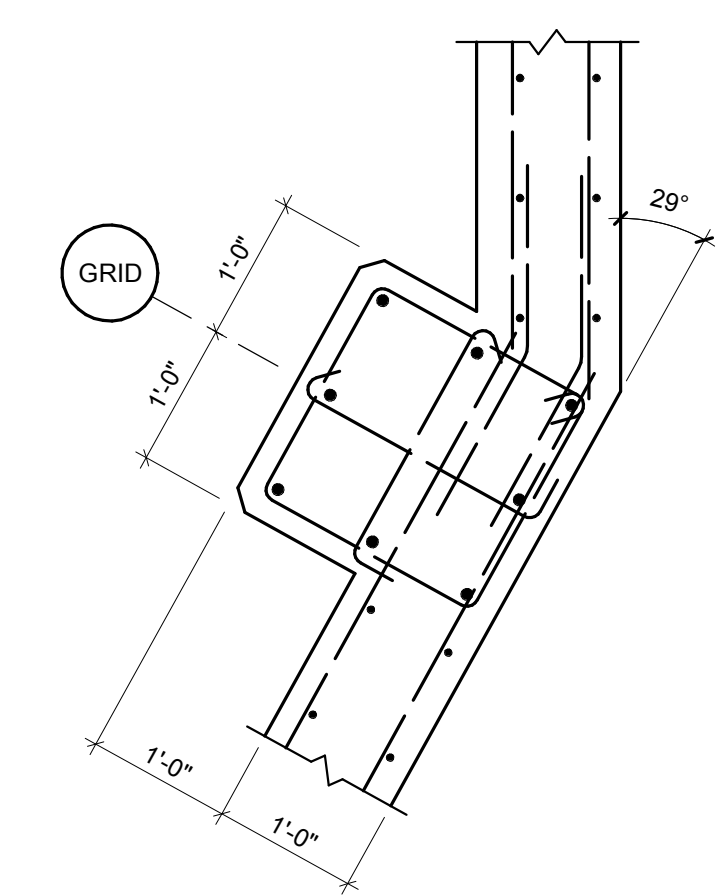
6 PLAN DETAIL  
3/4" = 1'-0"



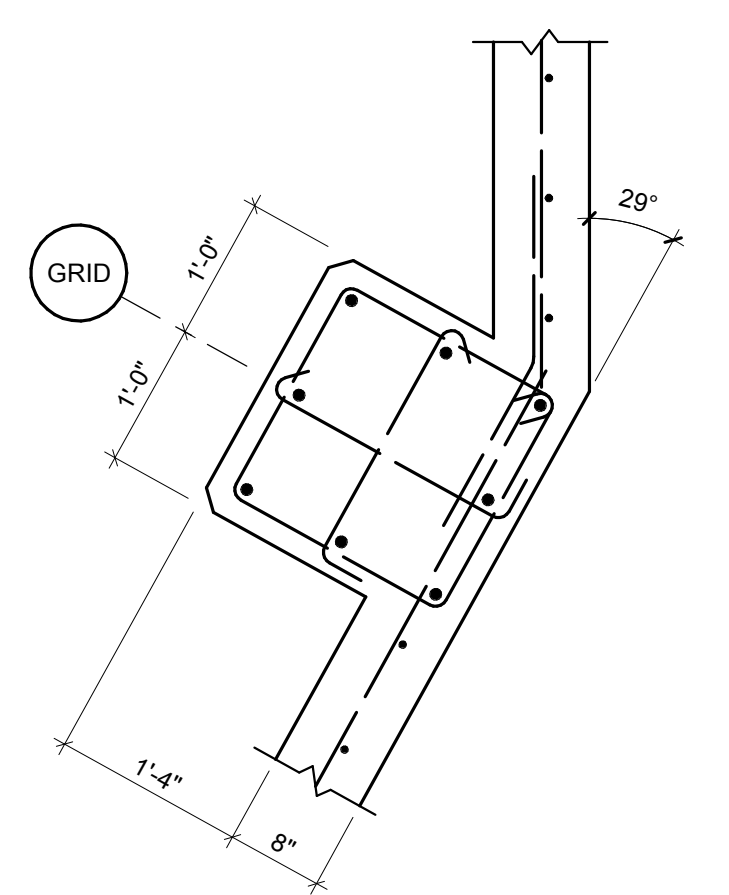
7 PLAN DETAIL  
3/4" = 1'-0"



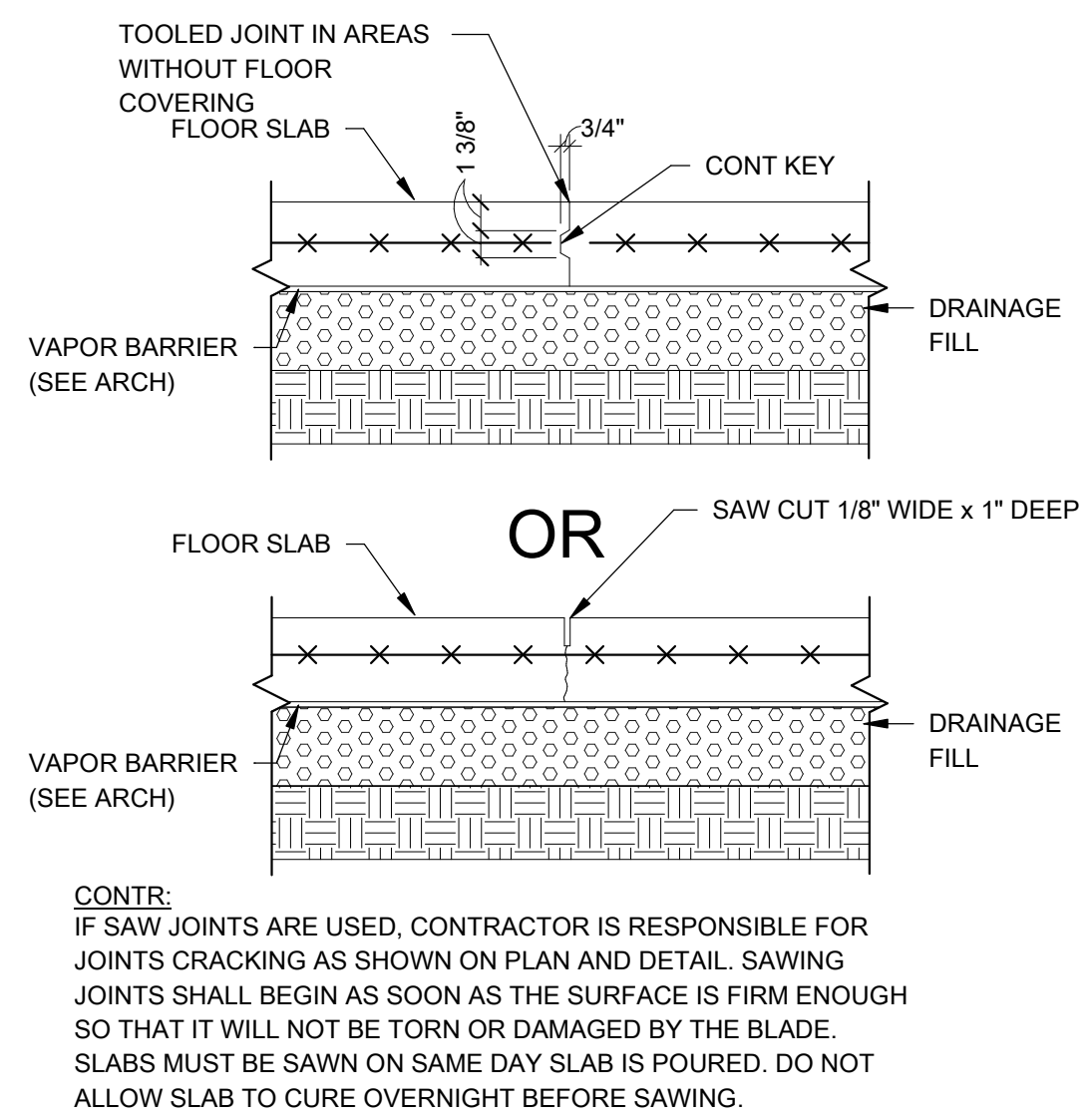
8 PLAN DETAIL  
3/4" = 1'-0"



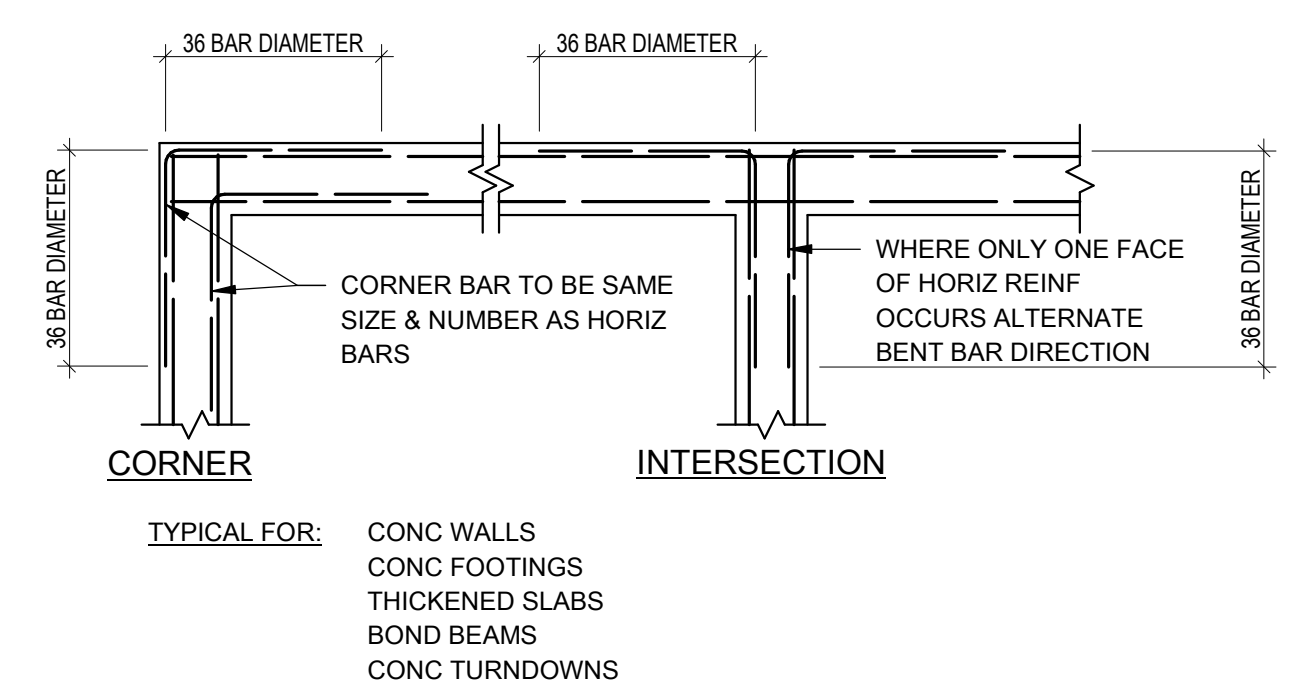
9 PLAN DETAIL  
3/4" = 1'-0"



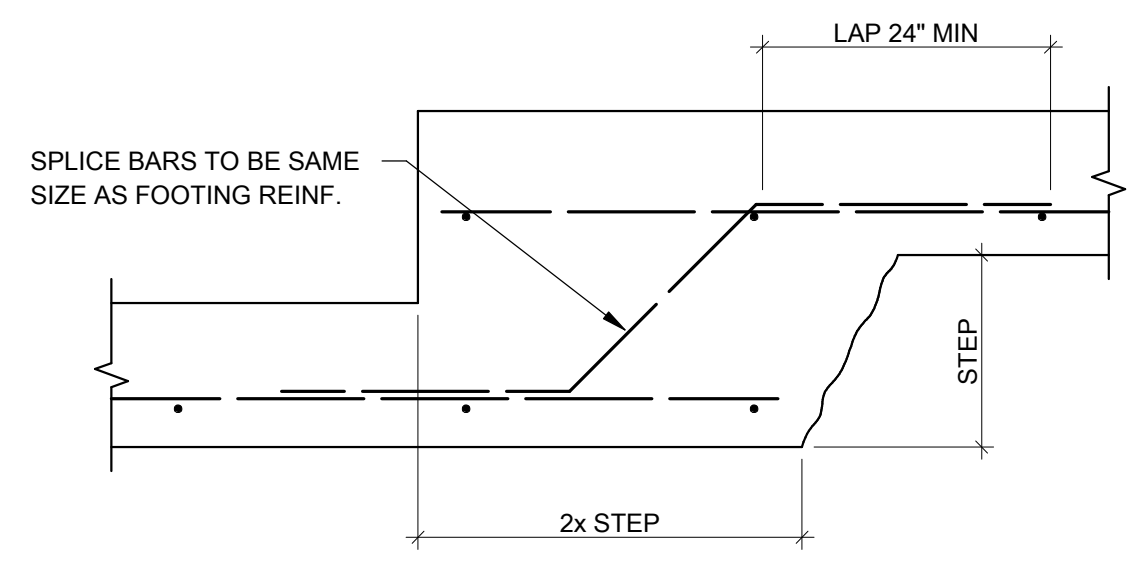
10 PLAN DETAIL  
3/4" = 1'-0"



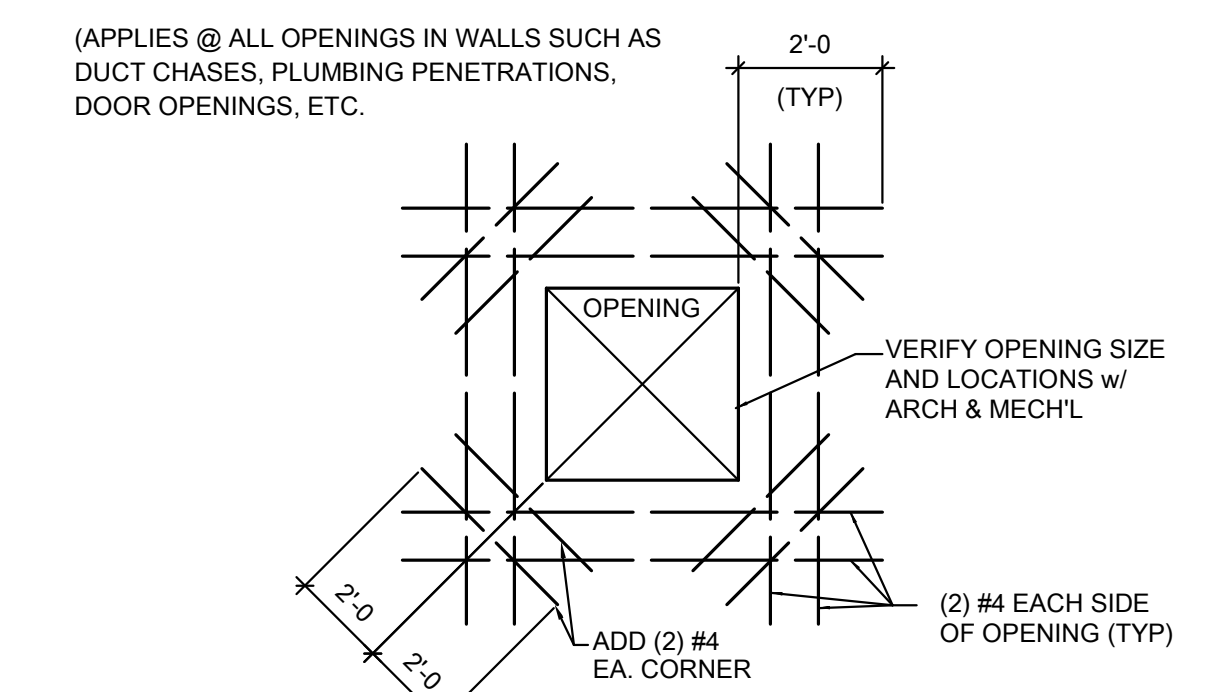
A CONTROL JOINT DETAIL  
3/4" = 1'-0"



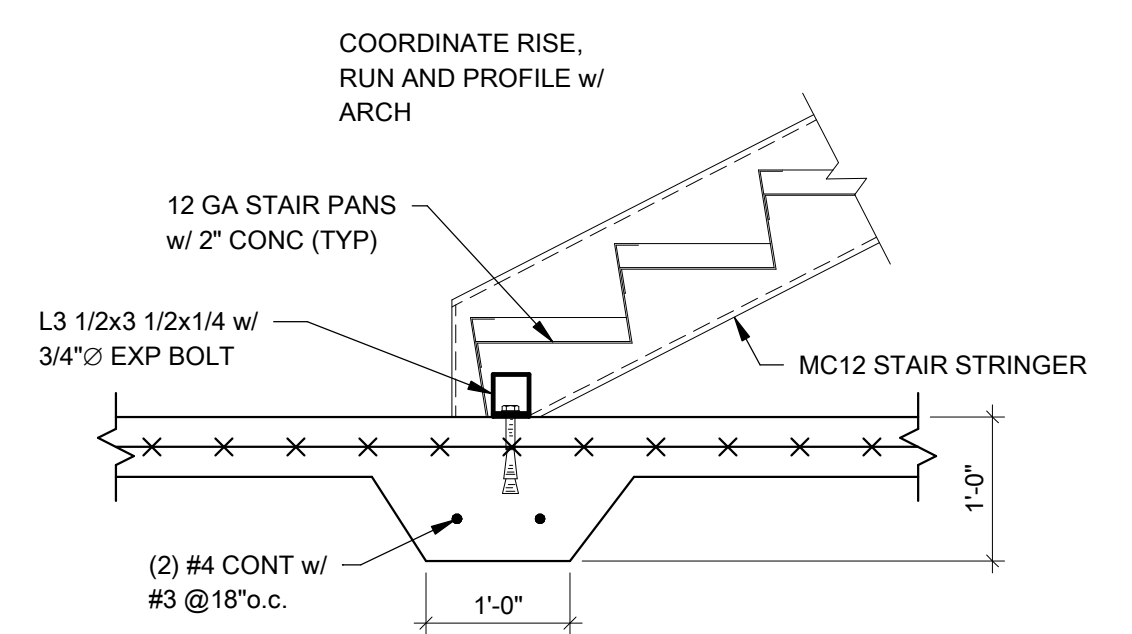
B TYPICAL CORNER BAR DETAIL  
3/4" = 1'-0"



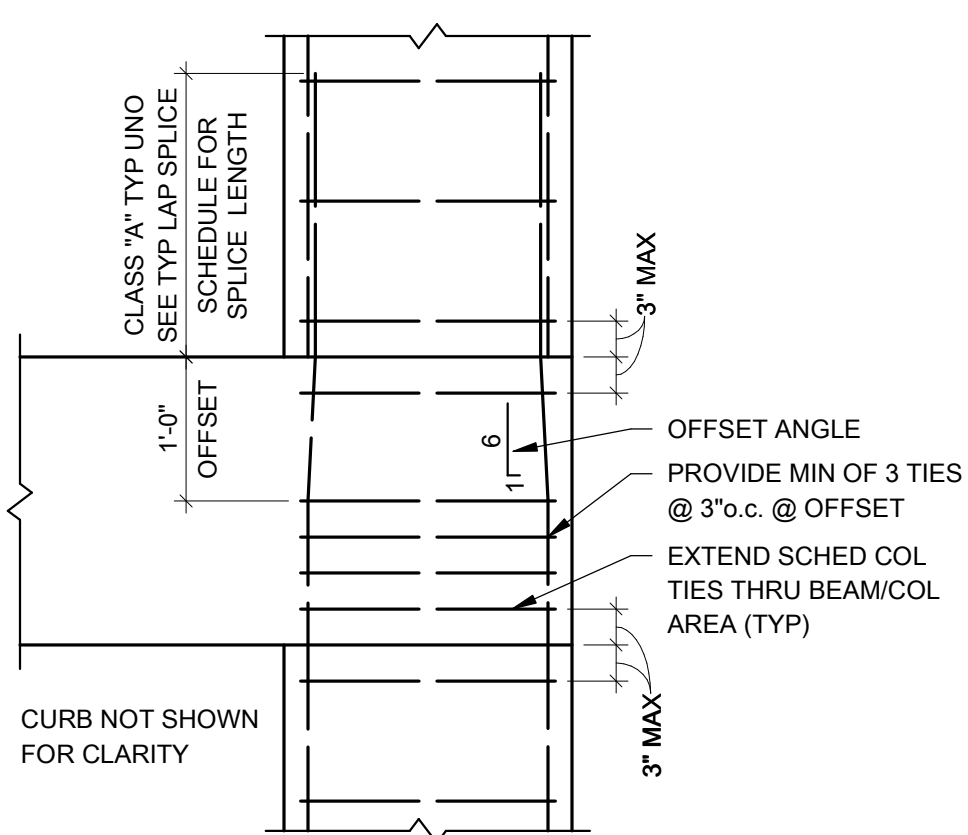
C CONT FOOTING STEP DETAIL  
3/4" = 1'-0"



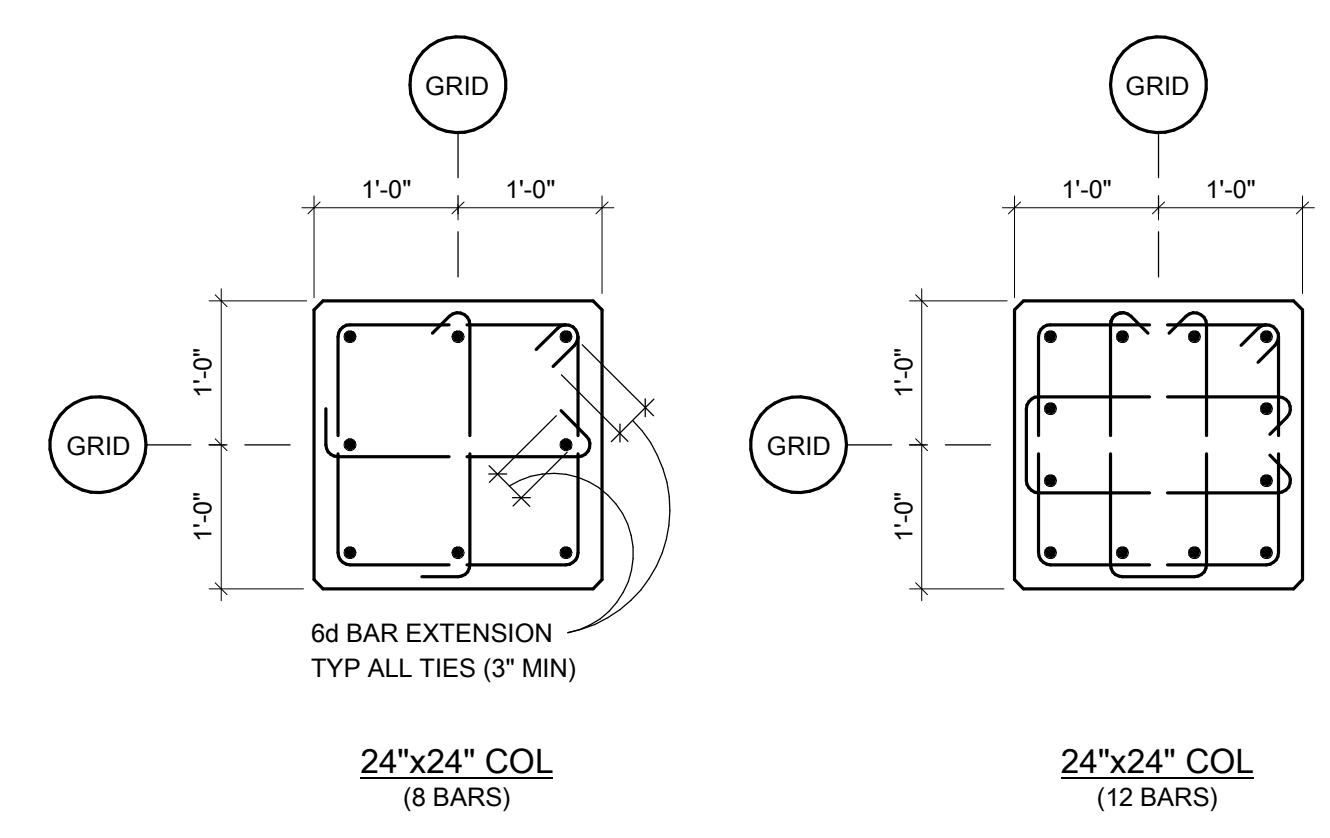
D TYPICAL REINFORCING @ OPENING IN WALL  
3/4" = 1'-0"



E STAIR AT FOUNDATION  
3/4" = 1'-0"



G COLUMN SPLICE DETAIL  
3/4" = 1'-0"



F COLUMN REINFORCING DETAILS  
3/4" = 1'-0"

**CONCRETE COLUMN SCHEDULE**

MARK	LVW	REINFORCEMENT
C1	24x24	(8) #8 VERT w/ #3 TIES @ 10" o.c.
C2	24x24	(12) #10 VERT w/ #3 TIES @ 10" o.c.

**Engineering Consultants, Inc.**  
Structural Engineers

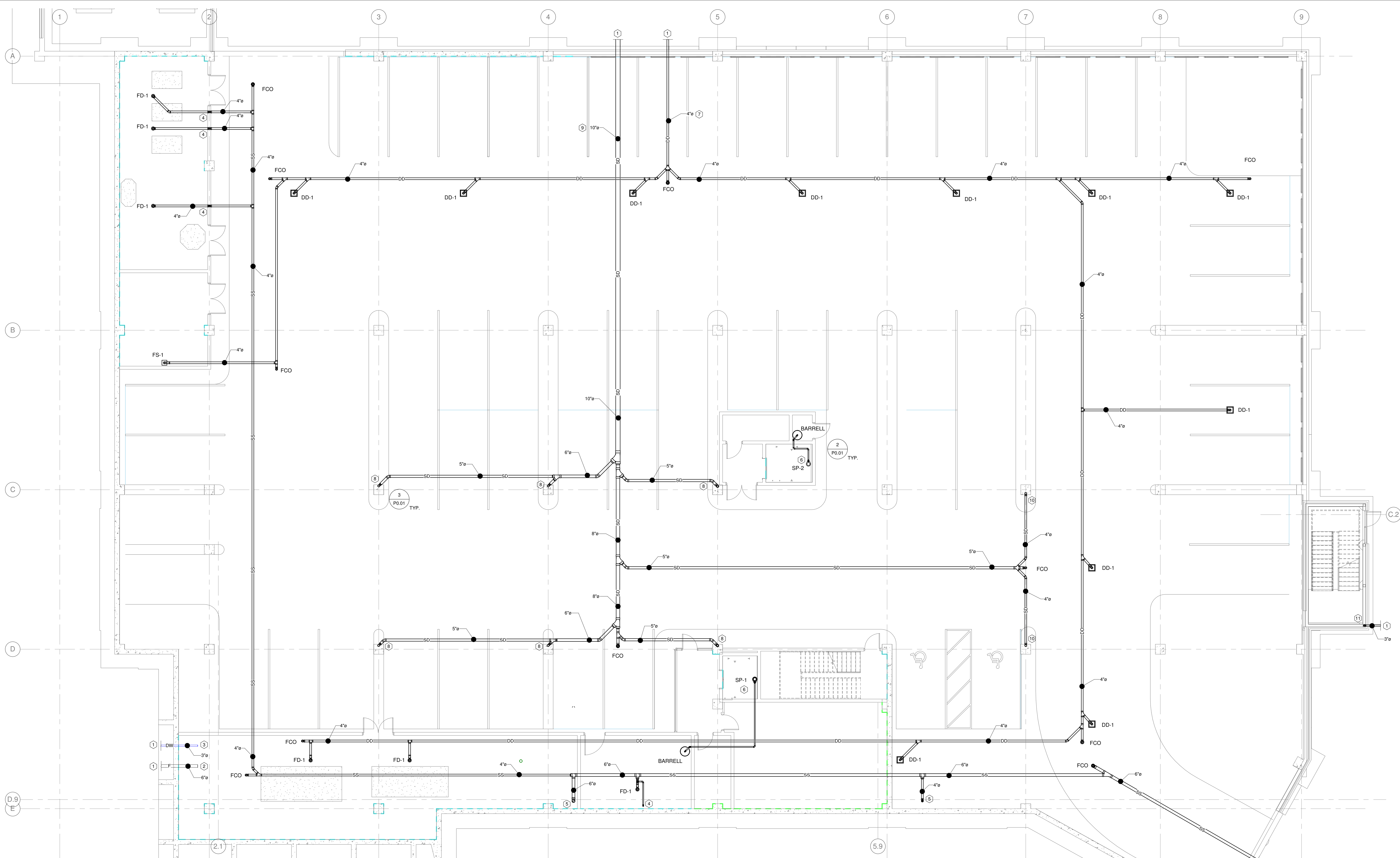
401 West Capitol Avenue, Suite 305  
Little Rock, Arkansas 72201-3401  
Phone No: (501) 376-3752  
Fax No: (501) 376-7314  
No. 8903

09/19/16  
16-028

9/19/2016

STATE OF ARKANSAS  
REGISTERED PROFESSIONAL ENGINEER  
No. 8903





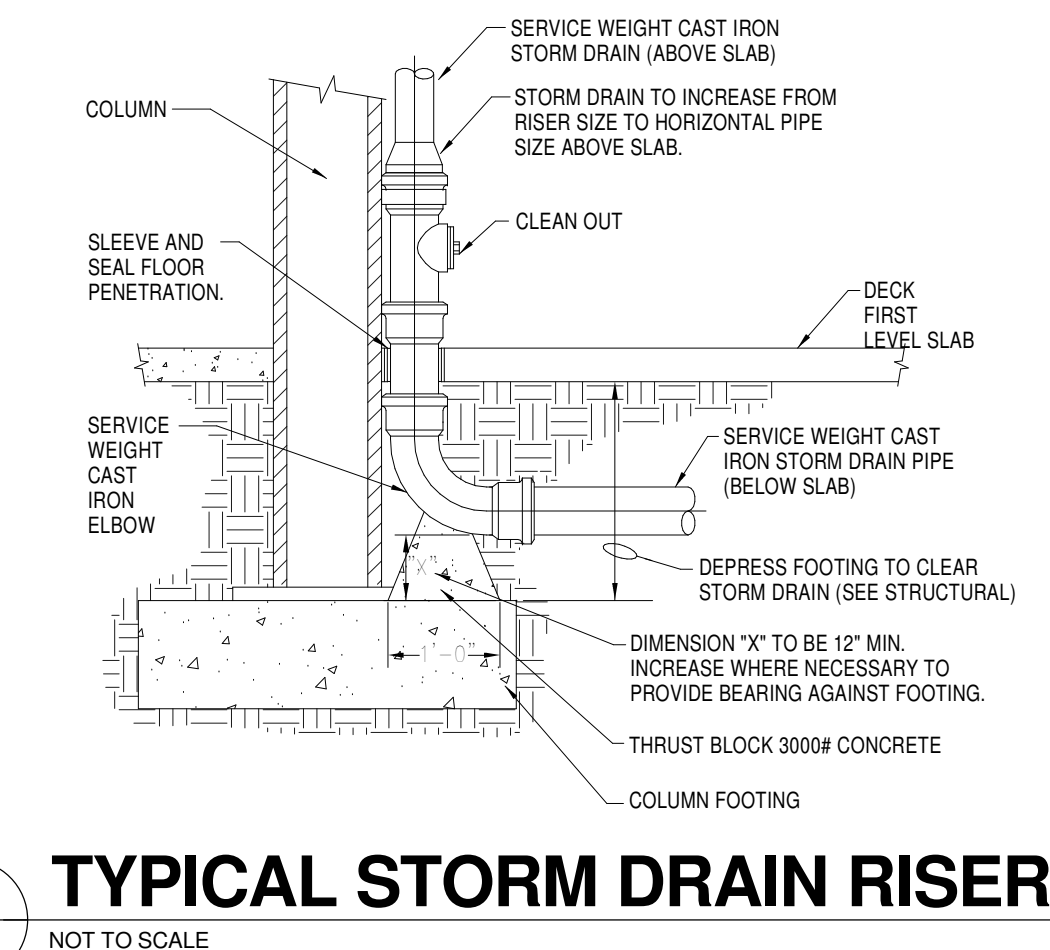
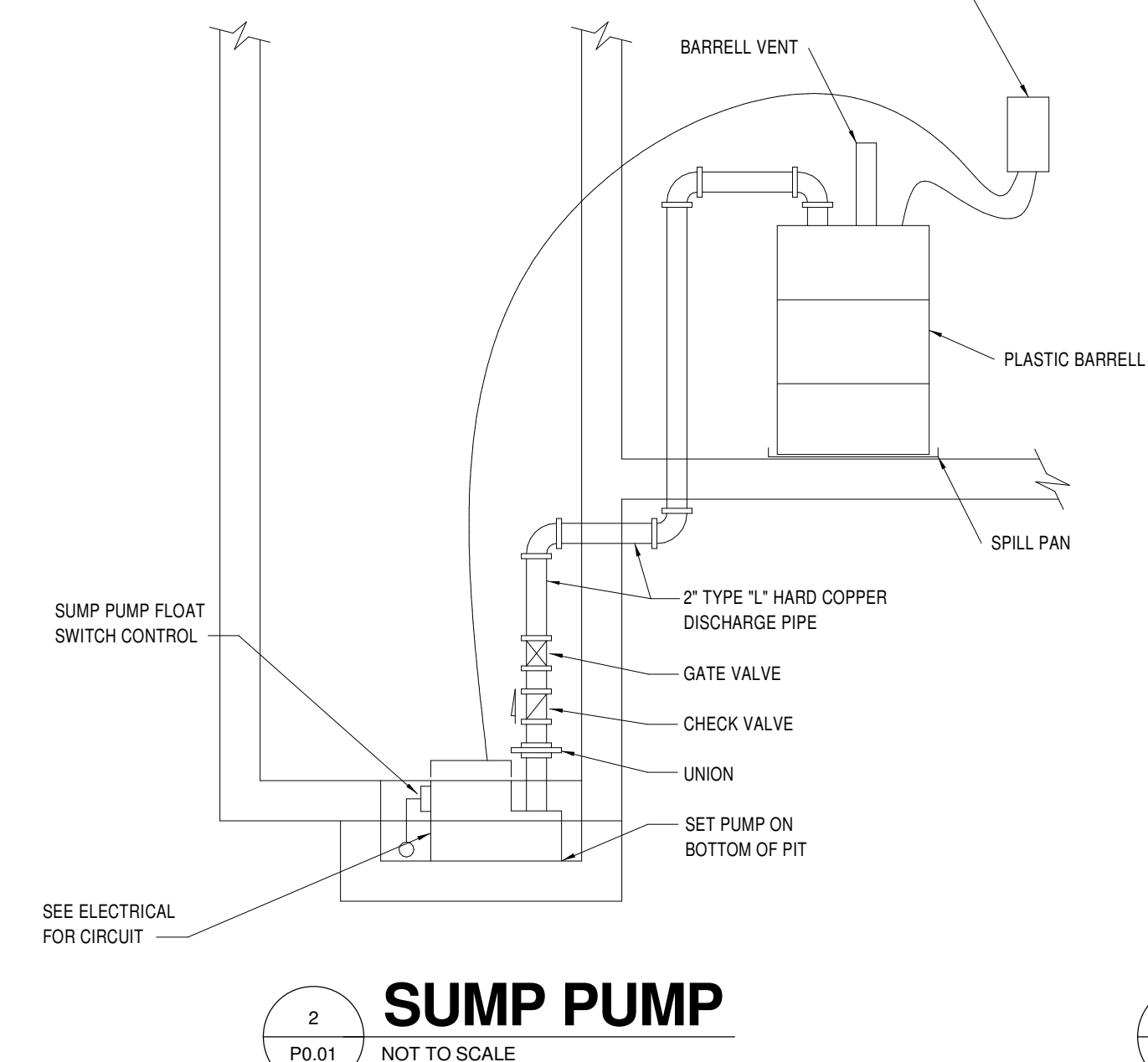
**1**  
P0.01 1/8" = 1'-0"

**UNDERGROUND PLUMBING PLAN**

**PLUMBING FIXTURE SCHEDULE**

MARK	DESCRIPTION	WASTE	C.W.	H.W.	MOUNTING	REMARKS
DD-1	DECK DRAIN	4"	--	--	DECK	EQUAL TO ZURN K237, 18" SQUARE PARKING DECK DRAIN, DURA-COATED CAST IRON BODY WITH BOTTOM OUTLET, HEAVY-DUTY GASKETED DRAIN SUPPORT FLANGE, WITH HEAVY-DUTY SLOTTED GRATE.
FD-1	FLOOR DRAIN	4"	--	--	FLOOR	EQUAL TO ZURN K2415 B. FLOOR DRAIN, DURA-COATED CAST IRON BODY WITH BOTTOM OUTLET, TYPE B POLISHED NICKLE BRONZE, LIGHT-DUTY STRAINER, PROVIDE WITH SURE SEAL TRAP PROTECTION.
FS-1	FLOOR SINK	4"	--	--	FLOOR	EQUAL TO ZURN K2190, RECEPTOR 12" X 12" X 6" DEEP CAST IRON BODY AND SQUARE LIGHT-DUTY GRATE WITH 1/2" SLOTTED OPENING, WITH INTERIOR BOTTOM DOME STRAINER.

- KEYED NOTES:**
- SEE CIVIL FOR CONTINUATION.
  - FIRE PROTECTION SERVICE MAIN, CAP WITHIN MECHANICAL ROOM. SLEEVE AND SEAL WALL PENETRATION.
  - DOMESTIC WATER SERVICE MAIN, CAP WITHIN MECHANICAL ROOM. SLEEVE AND SEAL WALL PENETRATION.
  - 2" SANITARY SEWER VENT STUBBED OUT ABOVE FLOOR.
  - SANITARY SEWER BRANCH LINE STUBBED OUT ABOVE FLOOR.
  - 2" SUMP PUMP DRAIN LINE ROUTED FROM ELEVATOR SUMP BELOW SLAB TO STUB UP ABOVE FLOOR IN MECHANICAL CLOSET.
  - PARKING DECK STORM DRAIN LINE.
  - 4" STORM DRAIN RISER, STUBBED OUT ABOVE FLOOR, INCREASE SIZE TO 5" ABOVE FLOOR BEFORE PIPE TURNS HORIZONTAL.
  - ROOF PRIMARY STORM DRAIN LINE.
  - 4" STORM DRAIN RISER STUBBED OUT ABOVE FLOOR.
  - 3" STORM DRAIN RISER STUBBED OUT ABOVE FLOOR.



**WITTENBERG, DELONY & DAVIDSON ARCHITECTS**

**PROJECT**  
FIRST NATIONAL BANK  
HILLTOP BRANCH & OFFICE BUILDING  
3500 East Johnson Avenue, Jonesboro, Ar

**CONTENT**  
UNDERGROUND PLUMBING PACKAGE

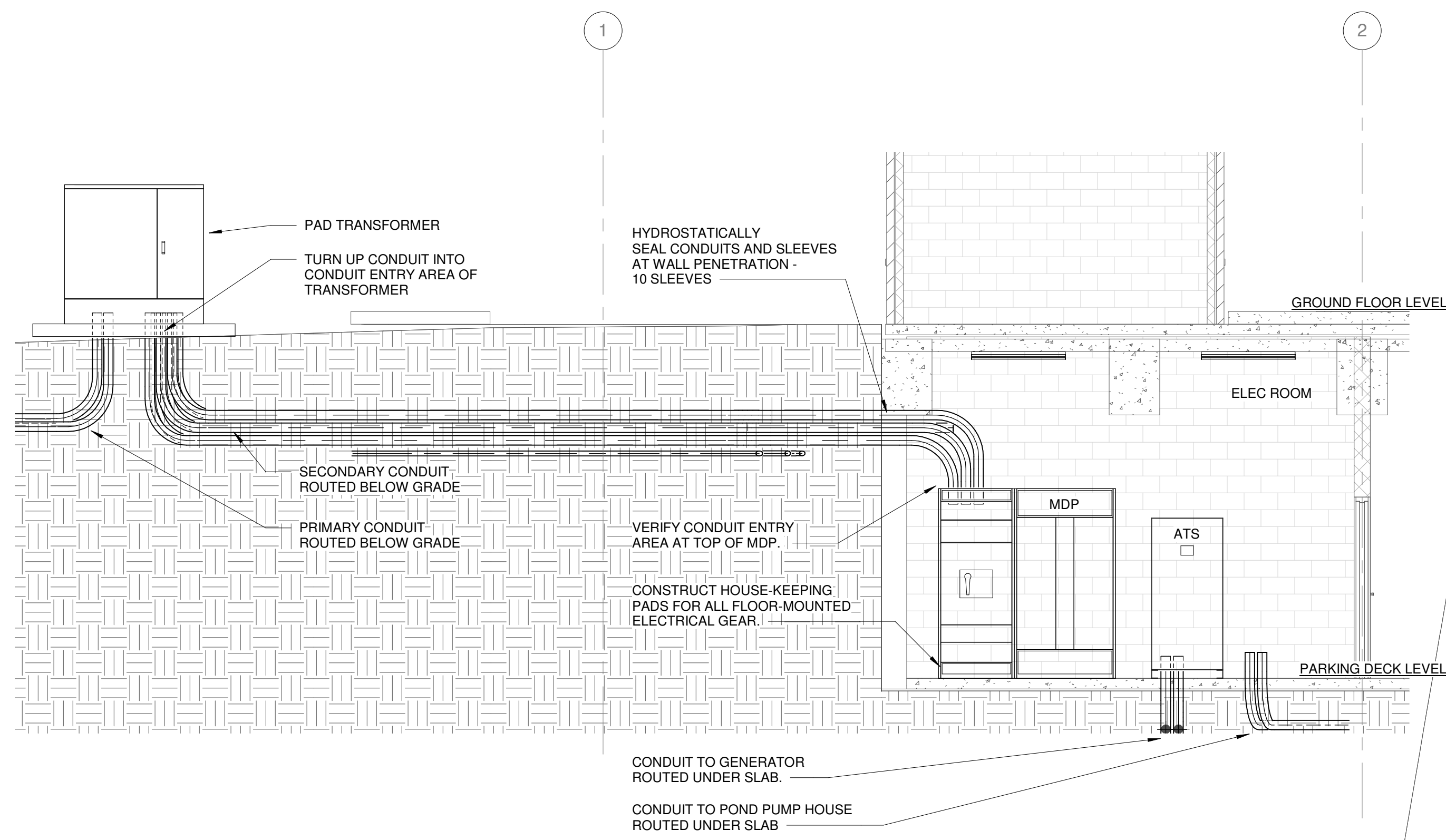
**REVISION**

REV. NO.	DATE	DESCRIPTION
09-19-2016		

**JOB**  
16-028

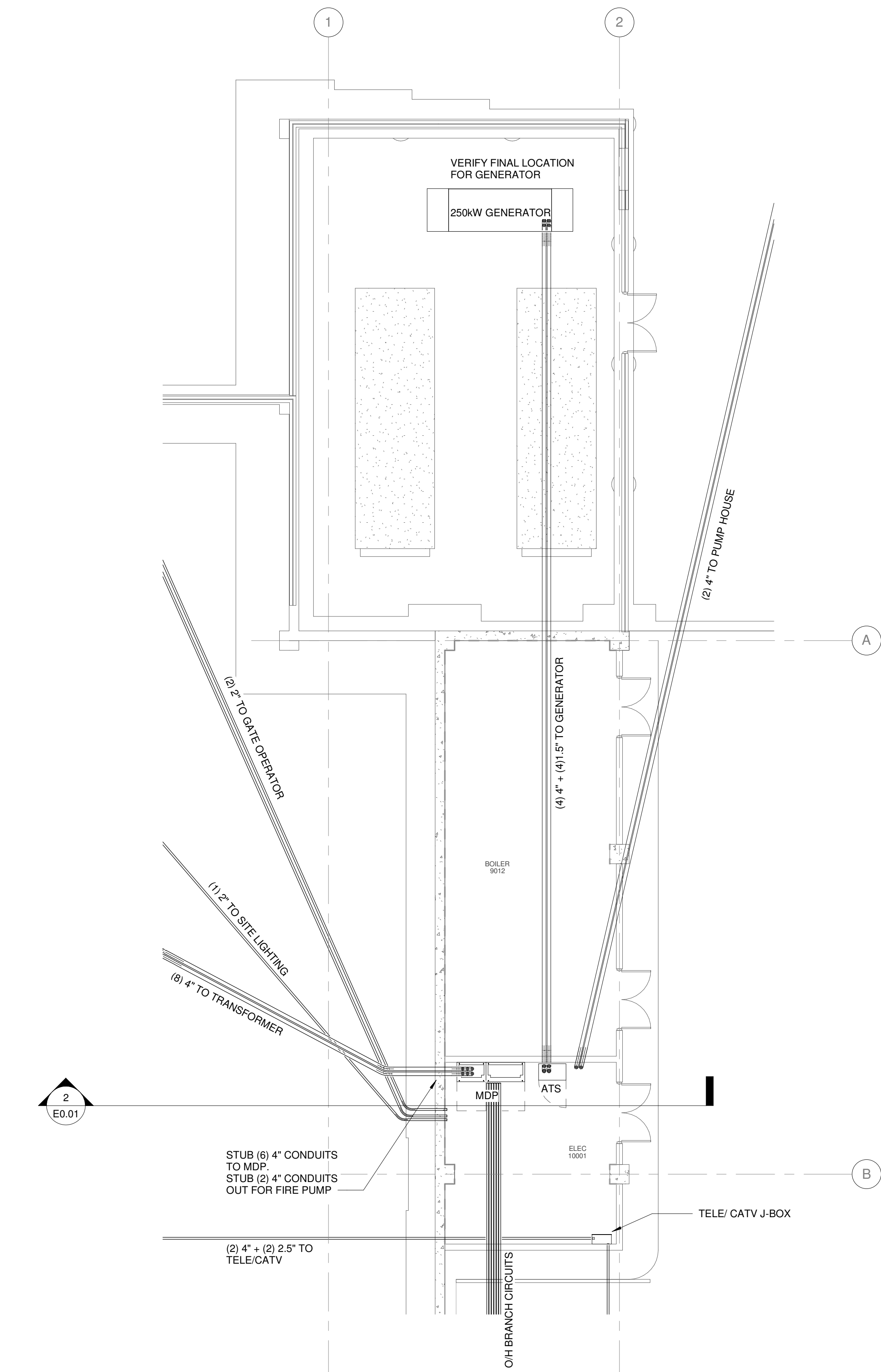
**SHEET**  
P0.01





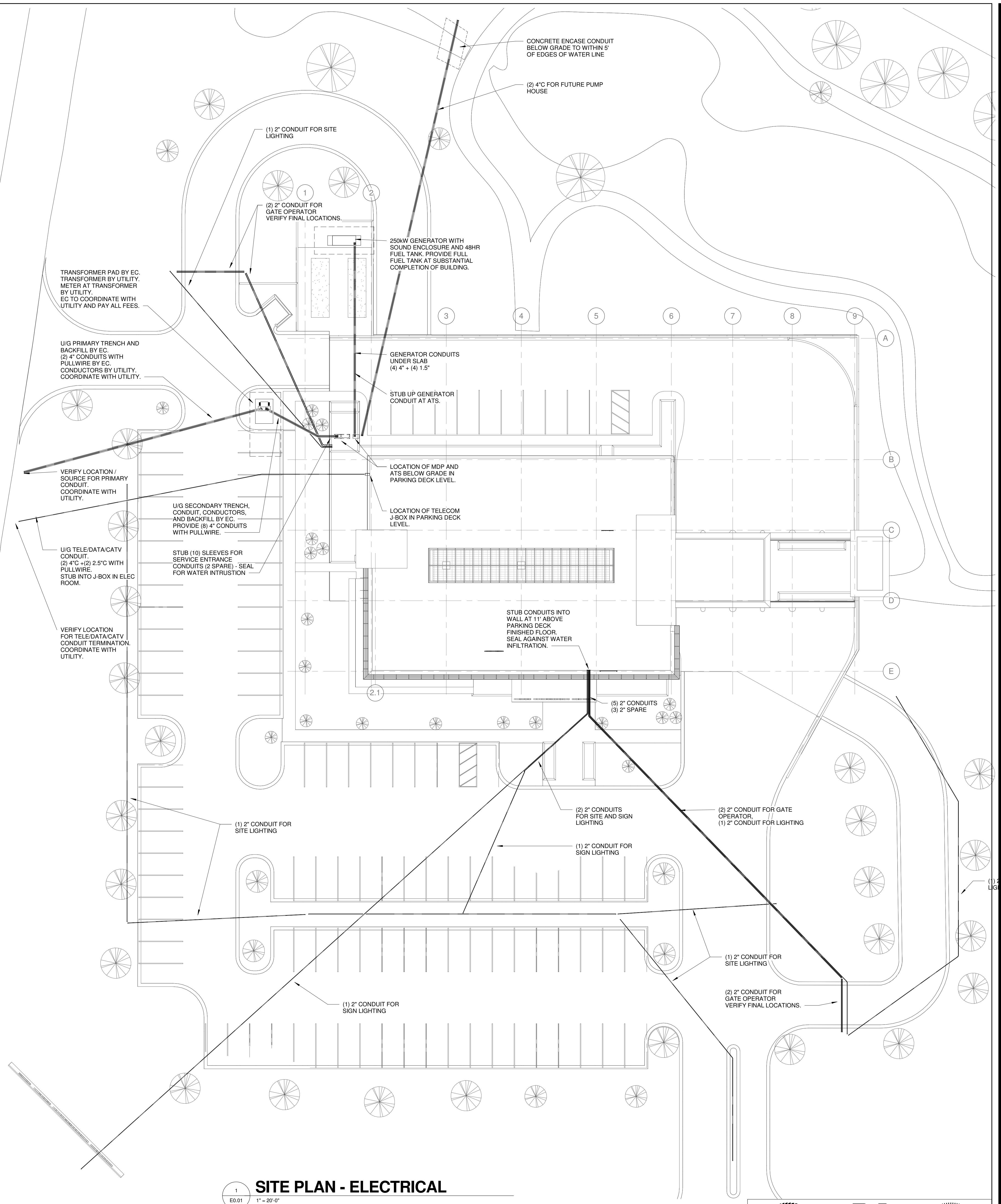
**SECTION - ELECTRICAL SERVICE ENTRANCE**

2  
E0.01  
1/4" = 1'-0"



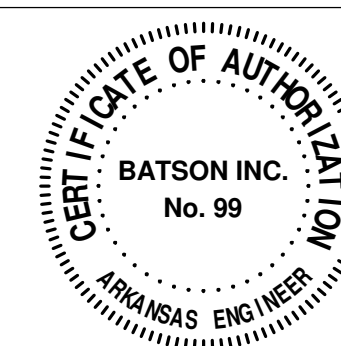
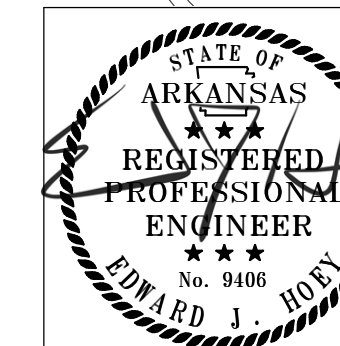
**PARTIAL PARKING LEVEL POWER PLAN**

3  
E0.01  
1/8" = 1'-0"



**SITE PLAN - ELECTRICAL**

1  
E0.01  
1" = 20'-0"



**WITTENBERG, DELONY & DAVIDSON ARCHITECTS**

**PROJECT**  
**FIRST NATIONAL BANK**  
**HILLTOP BRANCH & OFFICE BUILDING**  
 3500 East Johnson Avenue, Jonesboro, Ar

**CONTENT**  
**UNDERGROUND ELECTRICAL PACKAGE**

REV. NO.	DATE	DESCRIPTION
09-19-2016		
JOB		
16-028		

**SHEET**  
**E0.01**