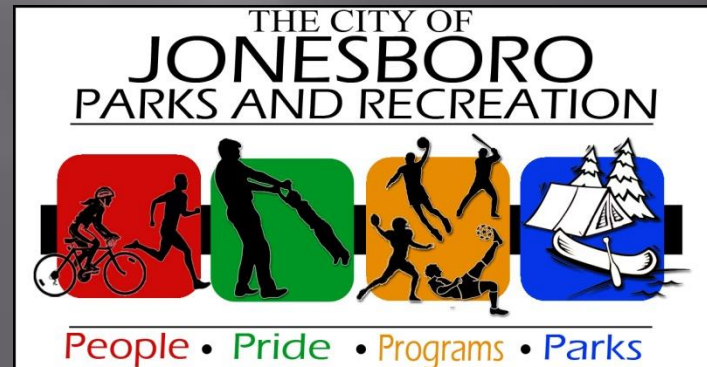


JONESBORO PARKS AND RECREATION



CRAIGHEAD FOREST PARK

New Welcome center with map of park



Mother of Angels Garden

The parks department partnered with Dora Edings on this project. This a memorial garden for mothers who lose their children at any age. Dora raised all the money and all the construction was donated for the project



Two New Restroom Facility's



2 New Pavilions



JOE MACK CAMPBELL
PARK

Renovation of infields



Added more covered seating



New concrete pads for coaches



New warm up bull pens



Two new fields



New sponsorship signs



SOUTHSIDE SOFTBALL COMPLEX

New overlay on parking lot and road



Flag poles donated by Pepsi Foundation



New concession stand and office facility



New dugouts



New entrance sign donated to the complex



Three new batting cages



We added outfield sprinkler systems to all fields. This has tremendously helped with the growth of the grass and playability

POOL CENTER

New pool center entrance



Big pool and kiddy pool



All new system to run facility



New cover for off season



GREENWAY

Section V coming from mall



Section VII coming soon *Matthews Medical Mile*



DR. REV LEWELLEN PARK

New play ground equipment and asphalt parking lot



New bench dedication



PARKER PARK SPLASH PAD

Construction



Completion



EARL BELL

Renovated both bathrooms and updated electrical issues



Center can be used for emergency center



New generator
*has been added to all 3 community
centers*

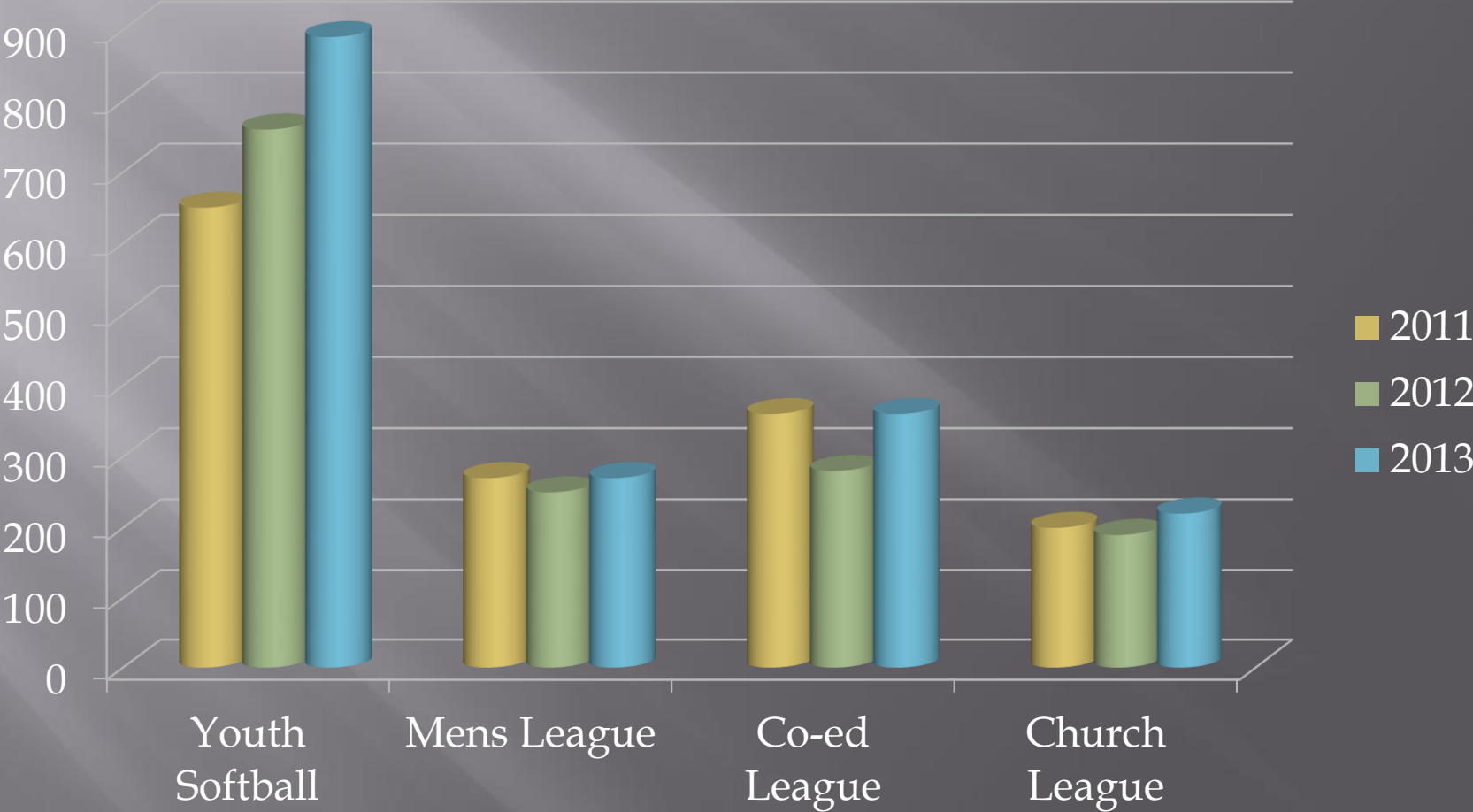


QUESTIONS?

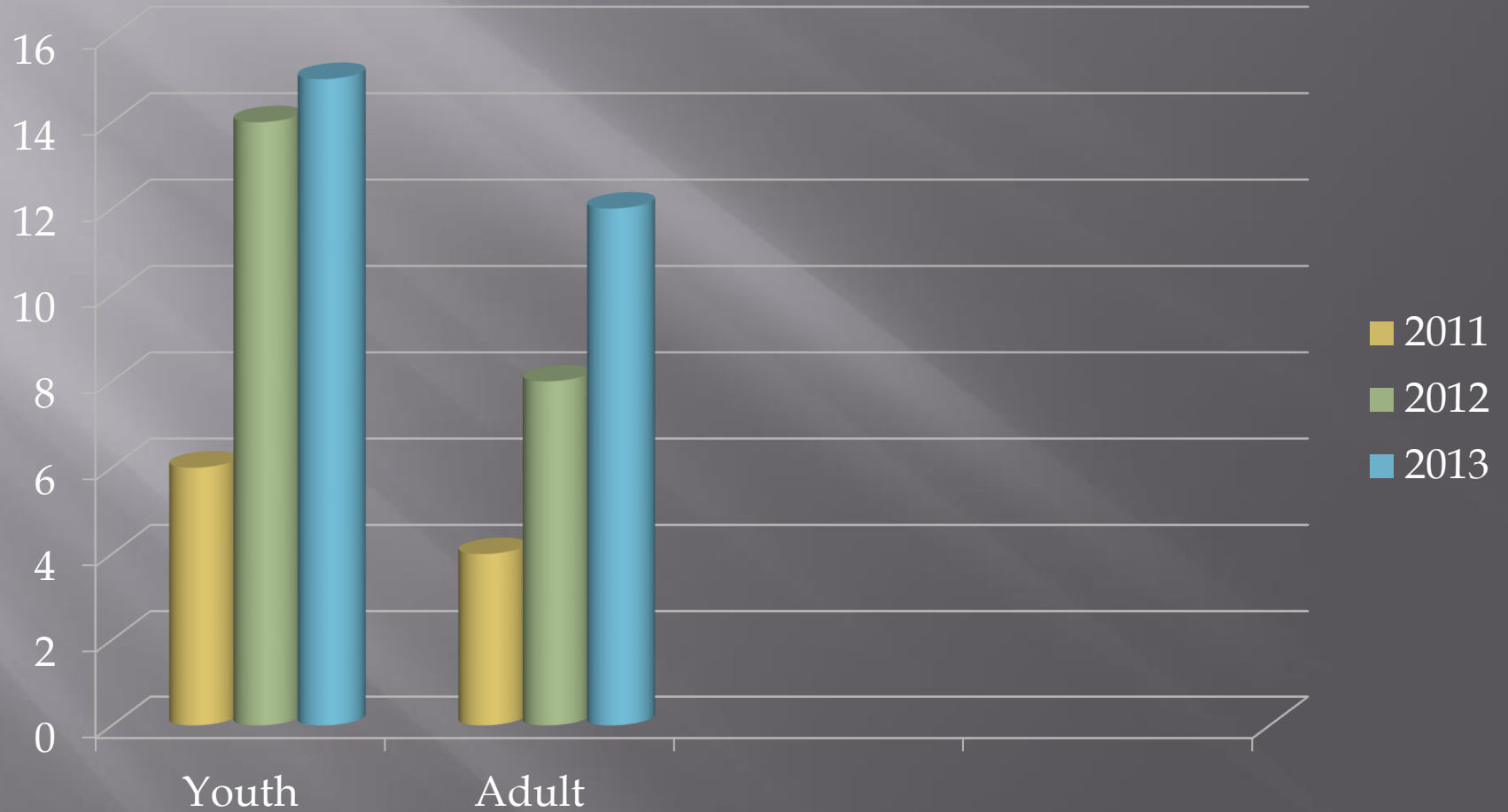
YOUTH SPORTS

Softball, Soccer, Basketball, Football,
Baseball

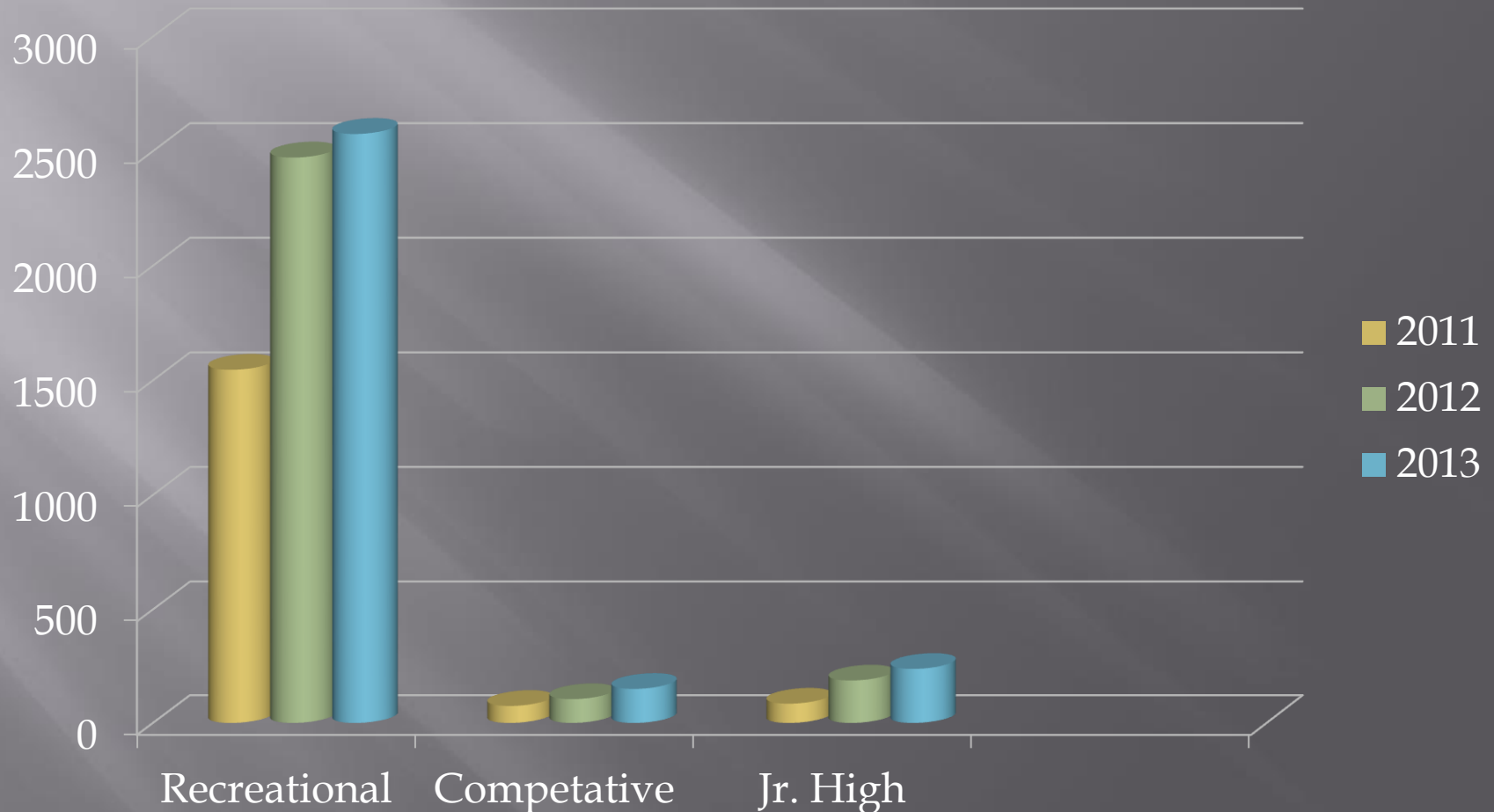
Softball Participants



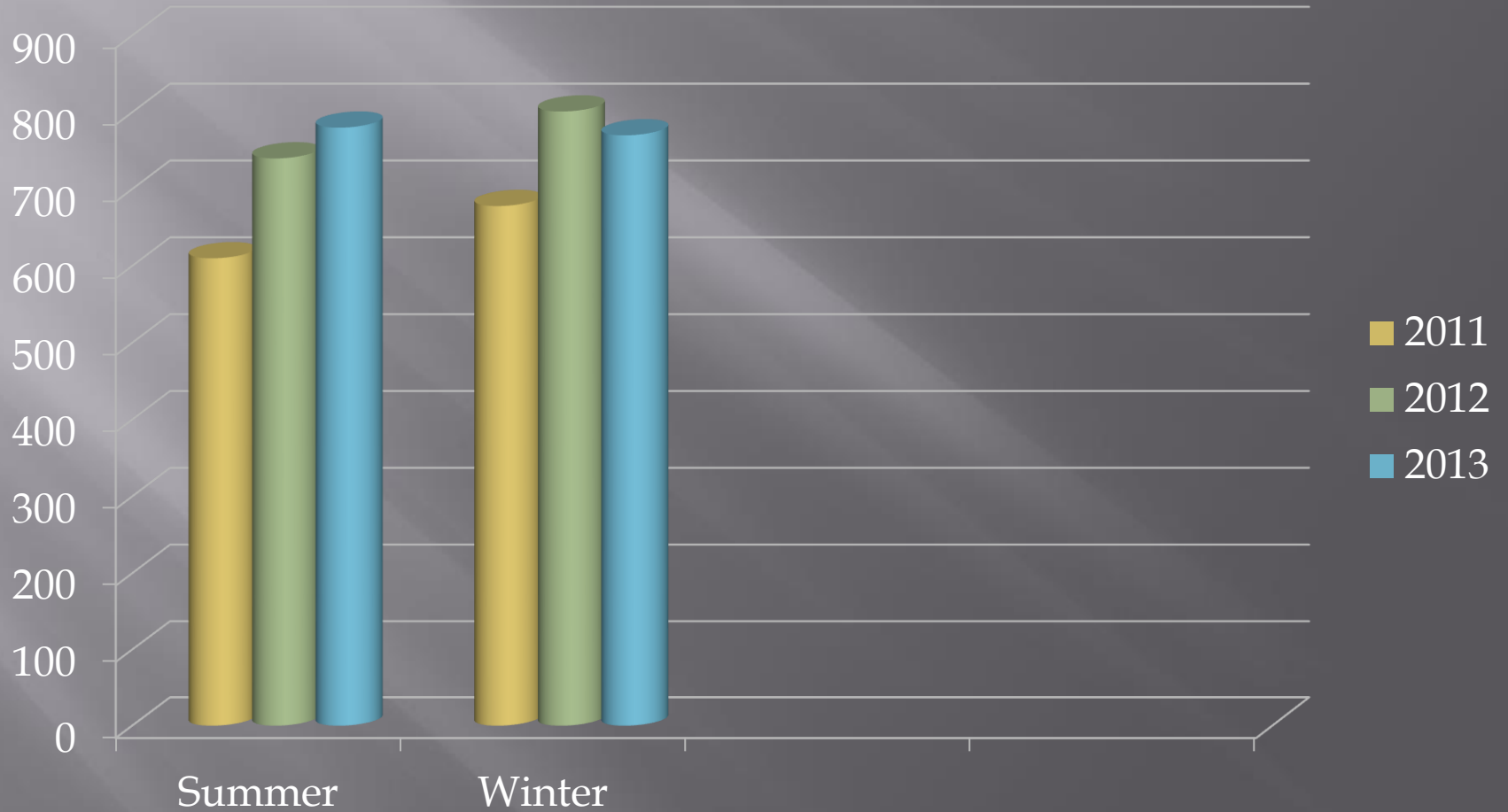
Softball Tournaments



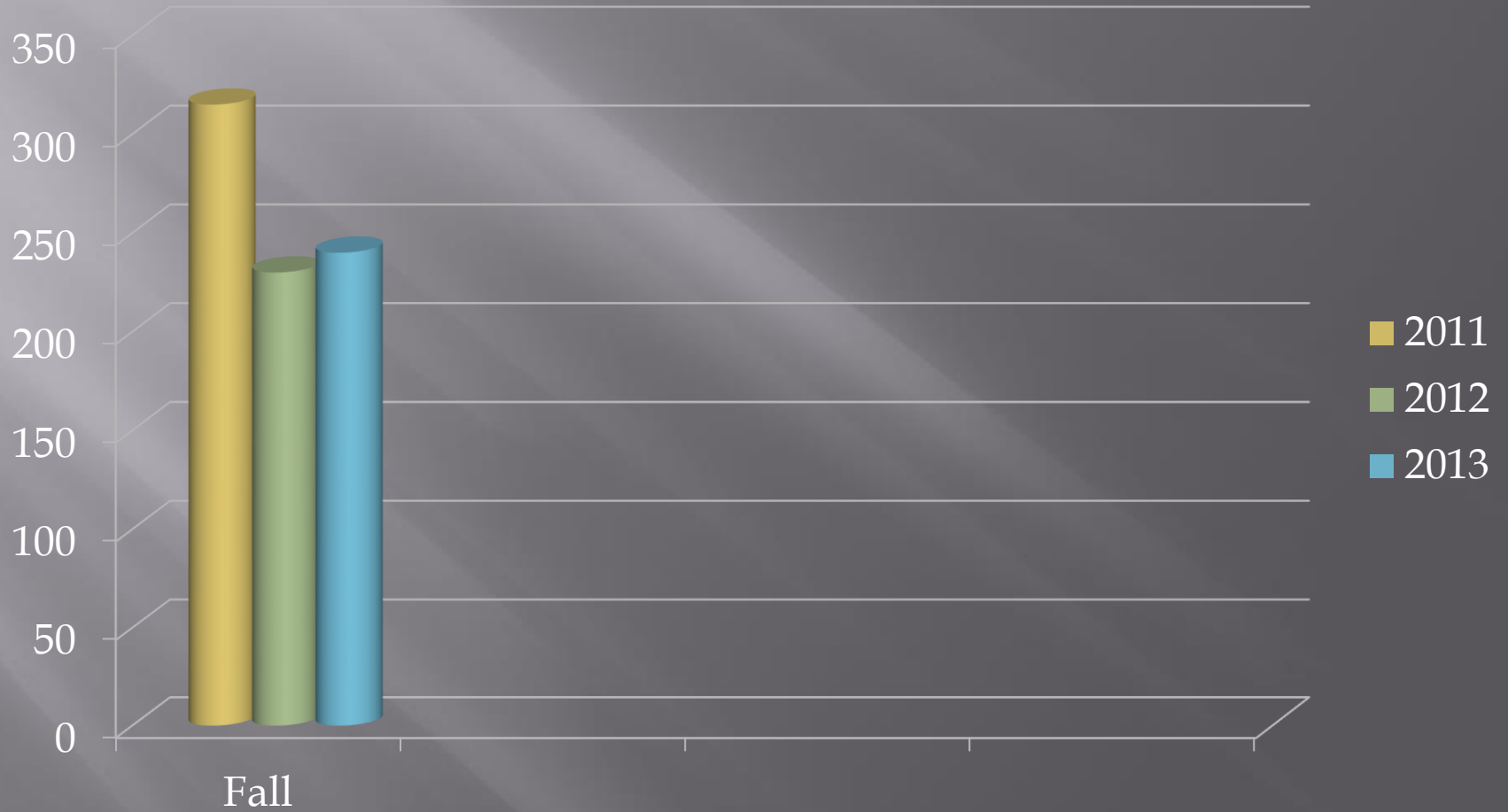
Soccer Participants based on fall and spring combined



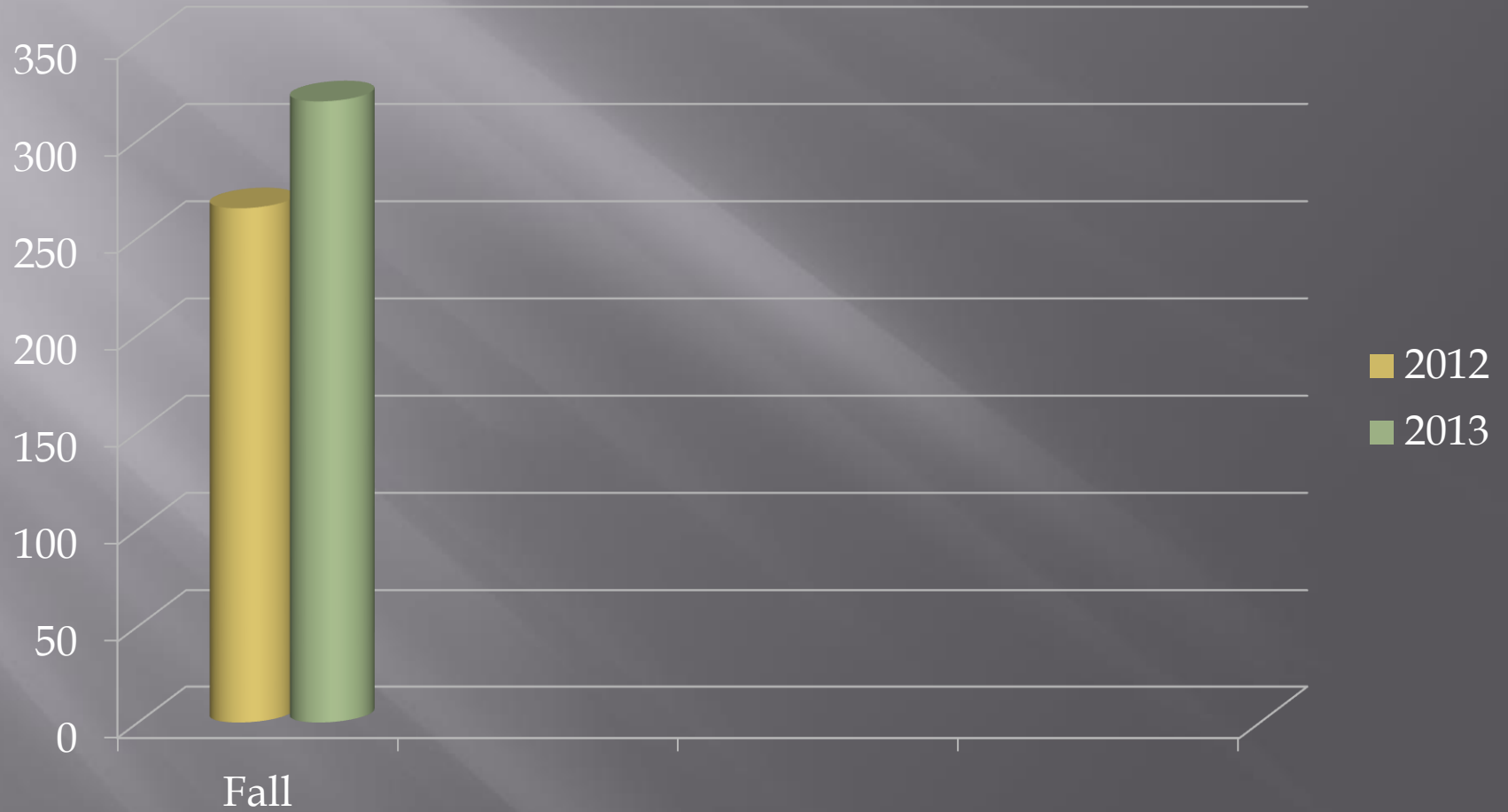
Basketball



Tackle Football

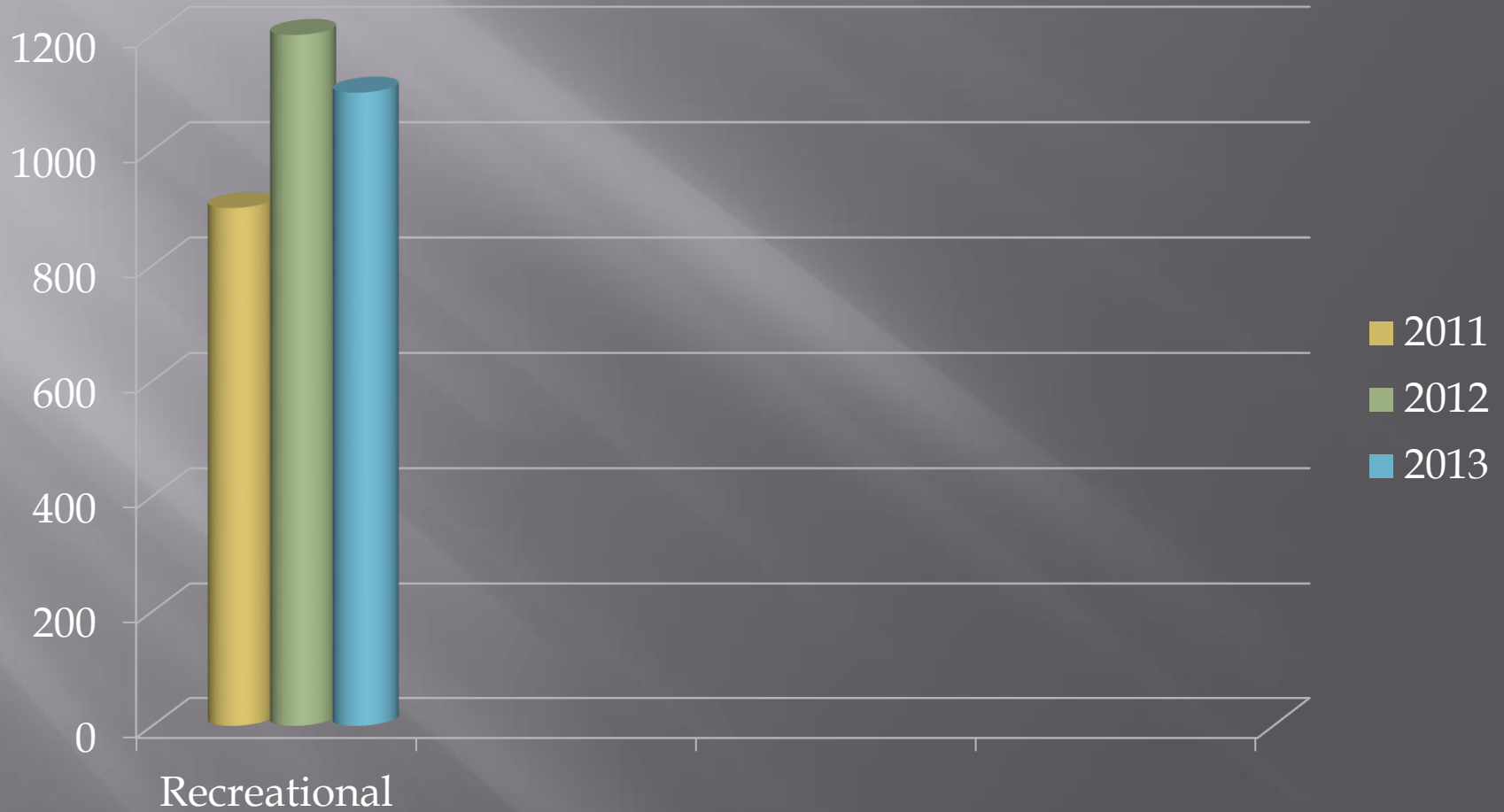


Flag Football



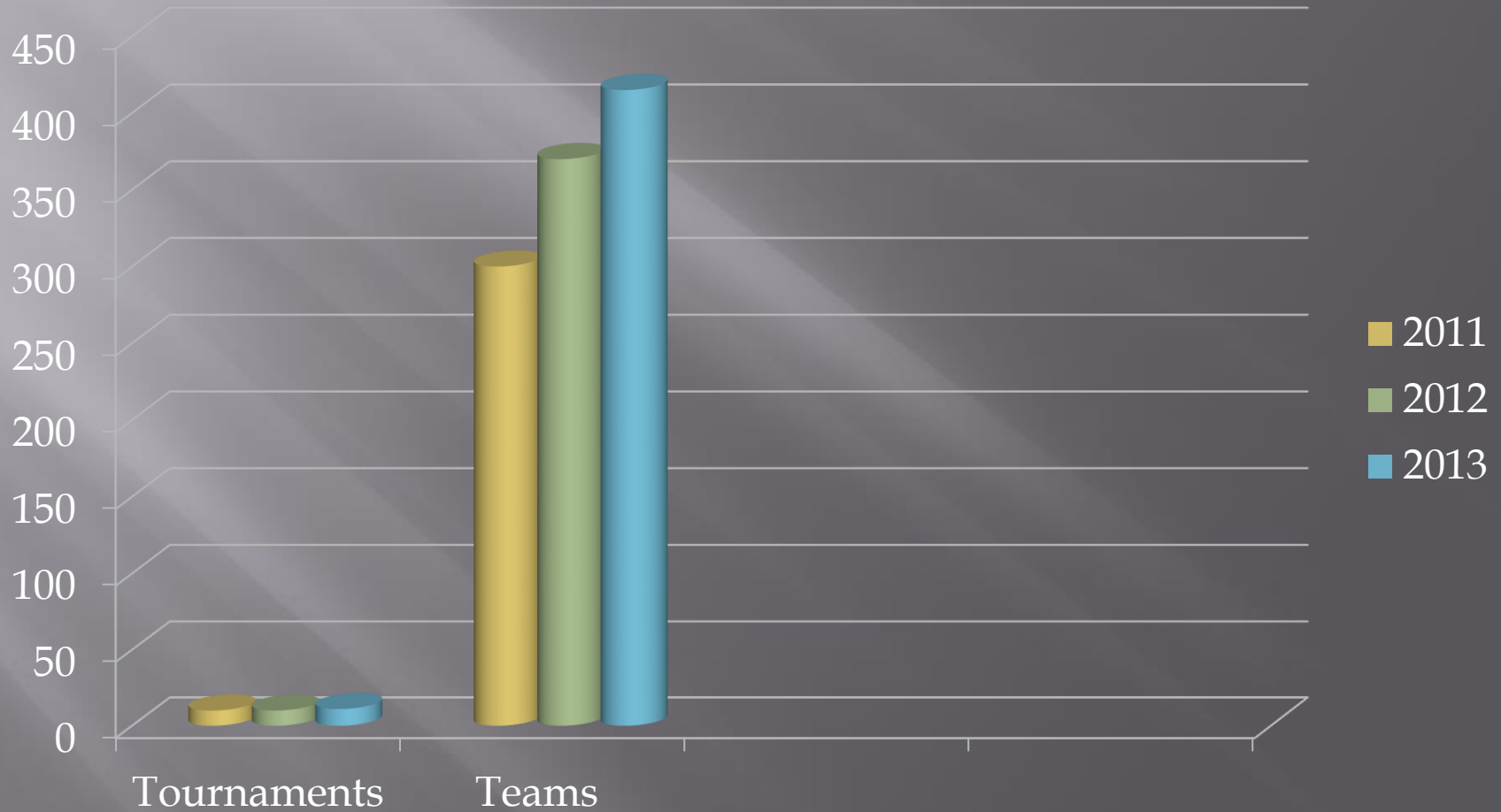
Baseball

not run by the city



Baseball Tournaments

not run by the city



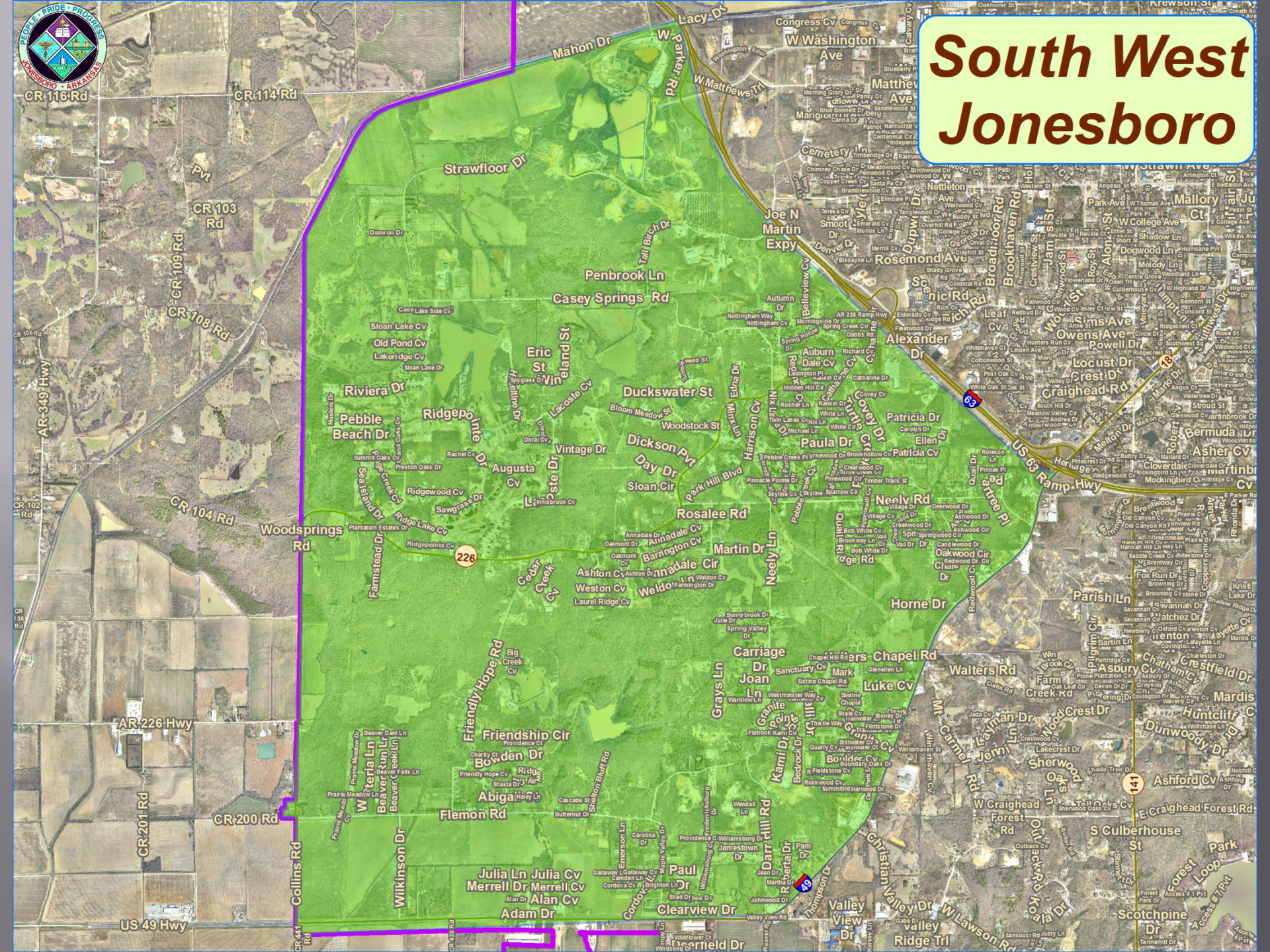
QUESTIONS?

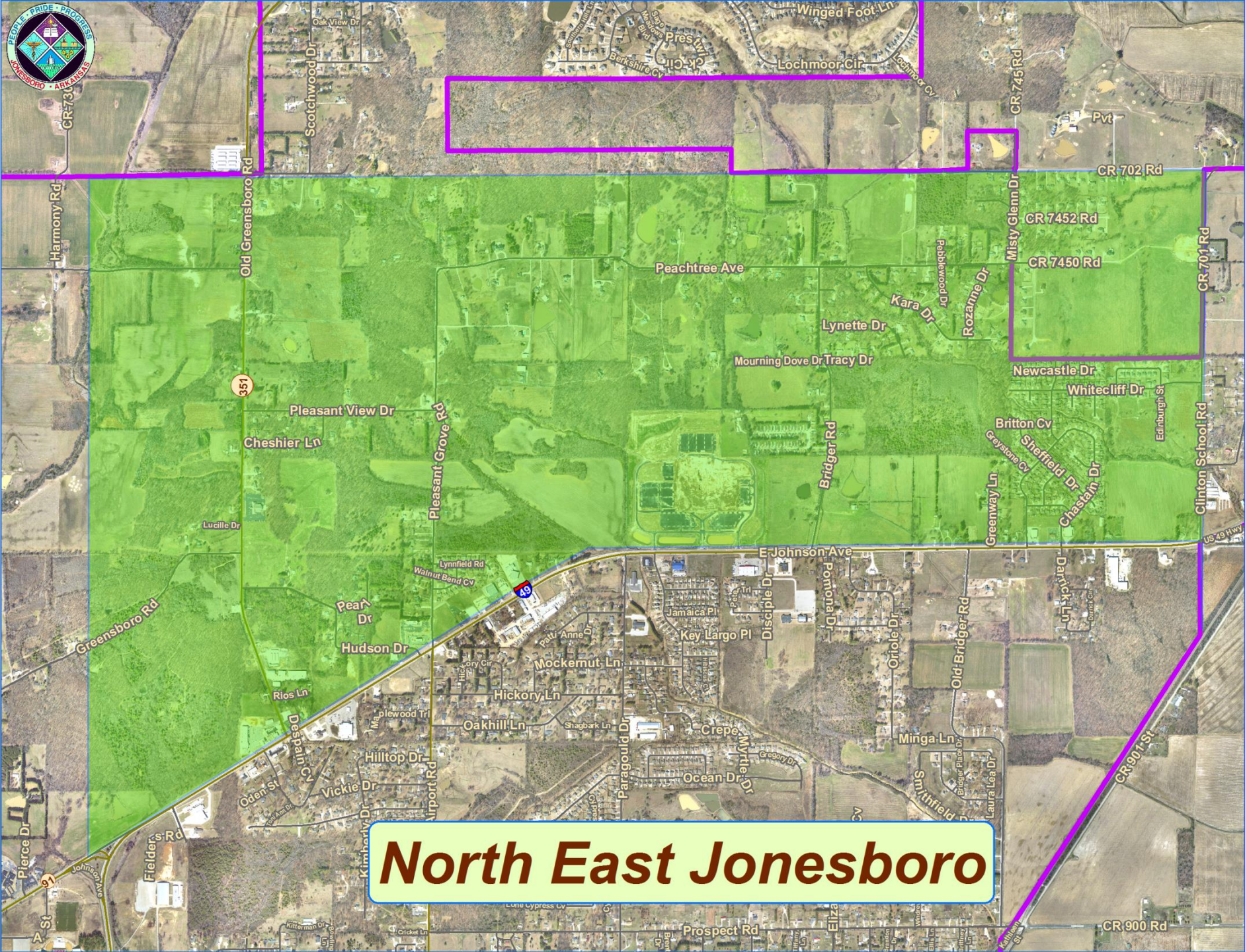
FUTURE OF PARKS

AREAS WE DON'T SERVICE



South West Jonesboro



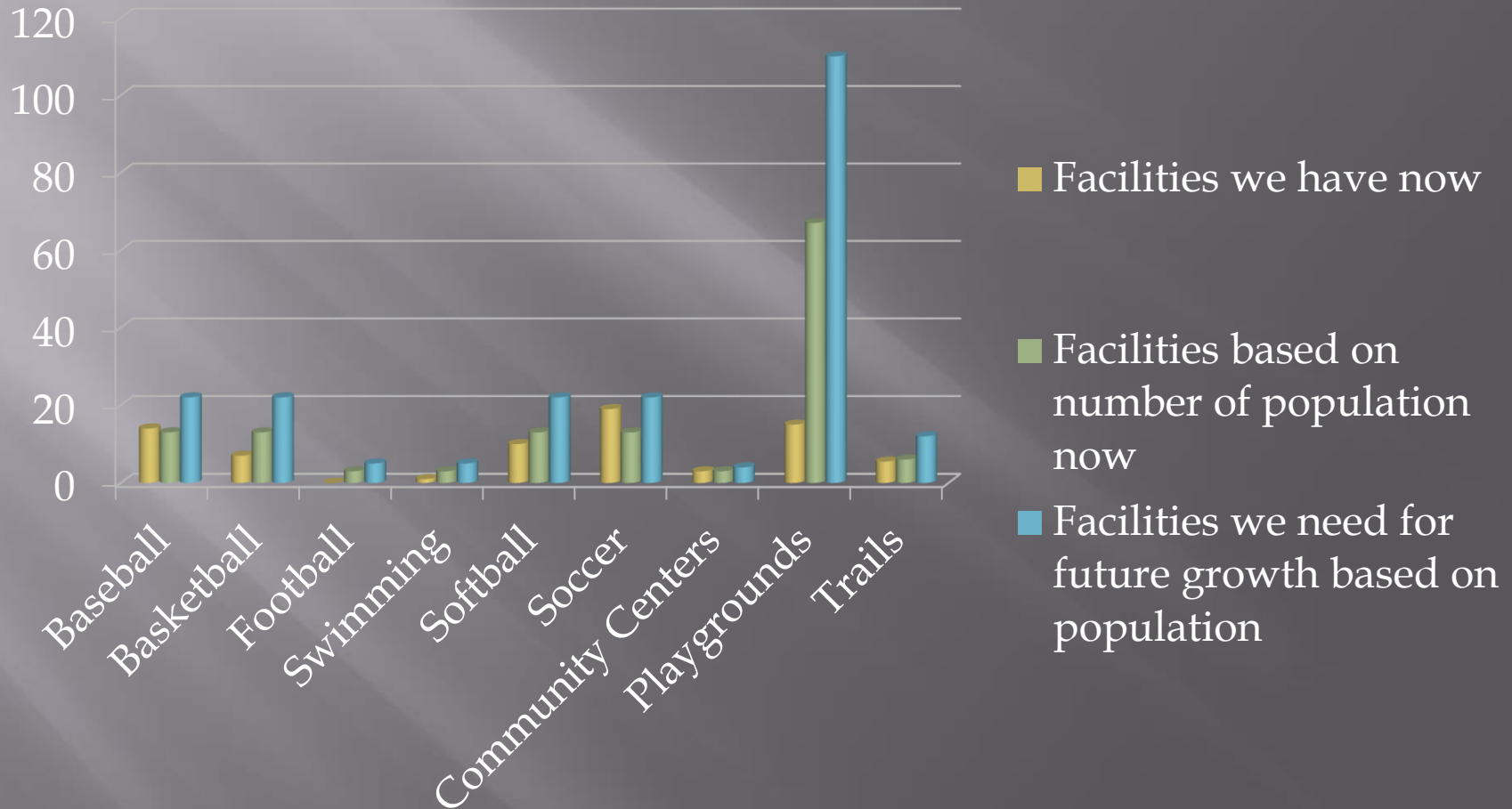


North East Jonesboro

Facilities based on population

- ▣ Baseball Fields 1 per 5,000
- ▣ Basketball Courts 1 per 5,000
- ▣ Football Fields 1 per 20,000
- ▣ Playgrounds 1 per 1,000
- ▣ Community Center 1 per 20,000
- ▣ Soccer Fields 1 per 5,000
- ▣ Softball Fields 1 per 5,000
- ▣ Swimming pool 1 per 20,000

Facilities for future growth



Why all the stats?

- ▣ The future of Jonesboro lies in its quality of life.
- ▣ We cannot sustain continued growth in population without addressing this critical element. A high Quality of Life is what draws industry to the area and encourages growth in private business. There is no department more critical to addressing QOL than our parks department. We simply cannot afford to fall any farther behind.
- ▣ We have a great community; with proper planning and attention to our Parks & Recreation there is no end to our potential.

QUESTIONS?