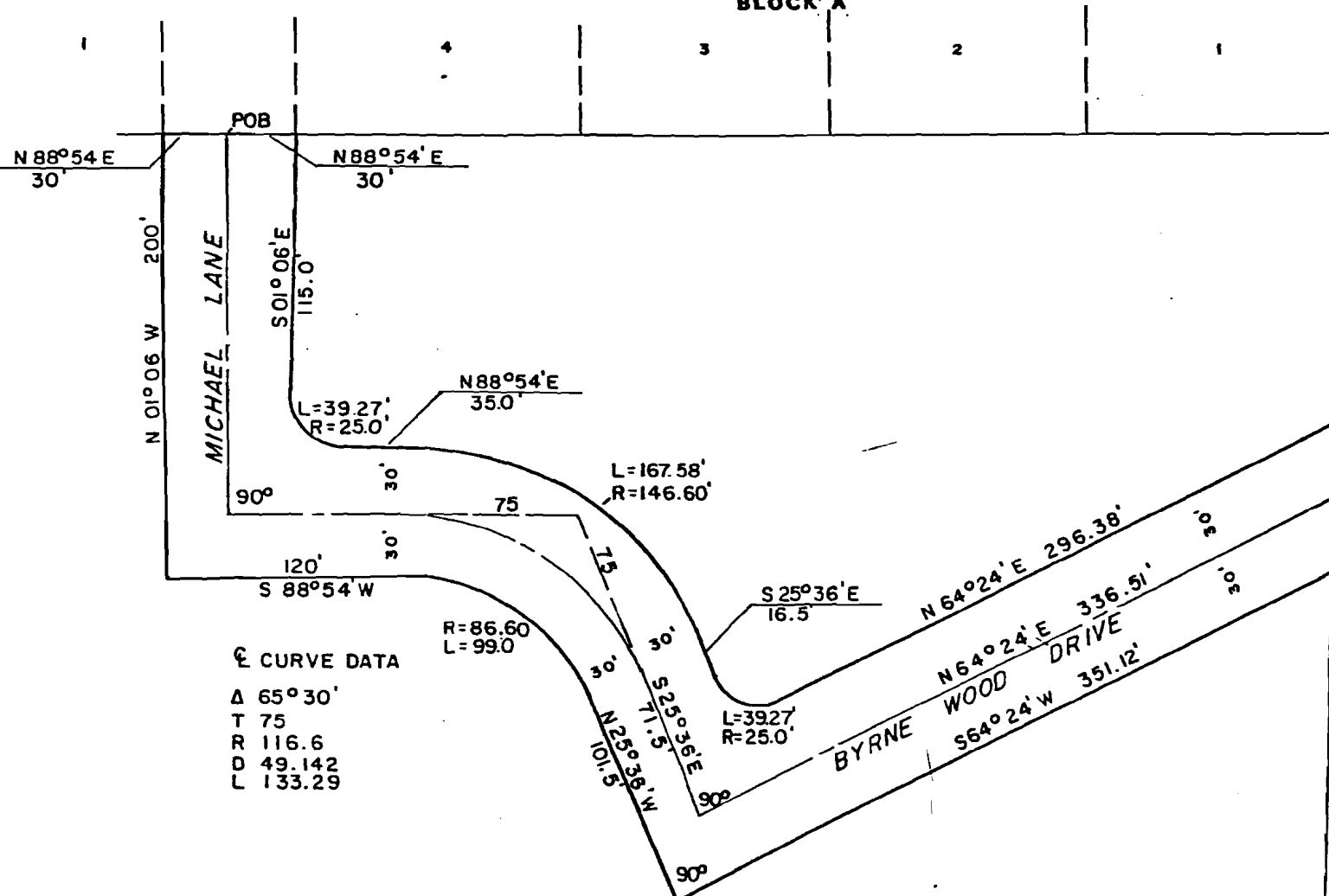


ROBINWOOD SUBDIVISION

BLOCK A

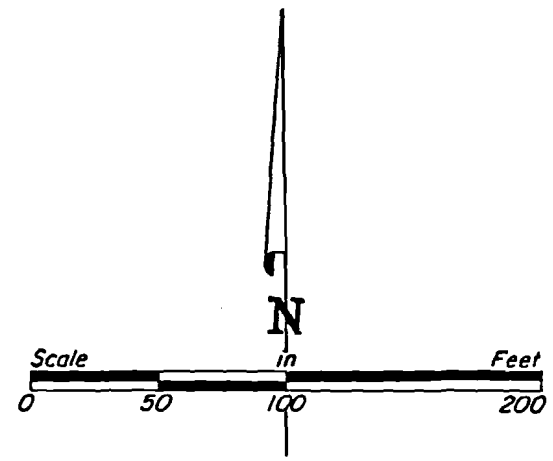


☉ CURVE DATA
 Δ 65° 30'
 T 75
 R 116.6
 D 49.142
 L 133.29

NE CORNER
 SE 1/4 SW 1/4
 SECTION 26
 T14N, R3E

SUBDIVISION

HIGH MEADOW



LEGAL DESCRIPTION

A part of the Southeast Quarter of the Southwest Quarter of Section 26, Township 14 North, Range 3 East, Craighead County, Arkansas, more particularly described as follows;

Beginning at a point in the center of an existing street, thence N88°54'E 30 feet along the north line of the Southeast Quarter of the Southwest Quarter of Section 26, Township 14 North, Range 3 East to the southwest corner of Lot 4, Block A of a Replat of Block A, Robinwood Subdivision (recorded in Plat Cabinet A, Page 177) and the east right-of-way line of a 60 foot wide street, thence S01°06'E 115.0 feet, thence southeasterly along a curve to the left with a radius of 25 feet, a distance of 39.27 feet, thence N88°54'E 35.0 feet, thence southeasterly along a curve to the right with a radius of 146.60 feet, a distance of 167.58 feet, thence S25°36'E 16.5 feet, thence along a curve to the left with a radius of 25 feet, a distance of 39.27 feet, thence N64°24'E 296.38 feet, thence southwesterly along the west line of High Meadow Subdivision 67.2 feet, thence S64°24'W 351.12 feet, thence N25°36'W 101.5 feet, thence along a curve to the left with a radius of 86.60 feet, a distance of 99.0 feet, thence S88°54'W 120 feet, thence N01°06'W 200 feet, thence N88°54'E 30 feet to the Point of Beginning Proper, containing 1.08 acres, more or less.

CERTIFICATE OF RECORD

STATE OF ARKANSAS }
 County of Craighead } ss.
 I, PAT FLEETWOOD, Clerk of the Circuit Court and Ex Officio Recorder for the County aforesaid do hereby certify that the annex and foregoing instrument in writing was filed for record in my office on the 12th day of Sept. A.D. 19 91 at 2:30 o'clock P. and the same is now duly recorded, with its acknowledgment and certificate thereon in Record Book No. DR 411 Page 73-74
 IN TESTIMONY WHEREOF I have hereunto set my hand and affixed the seal of said court this 12th day of September A.D. 19 91
 By Shannon Dilworth Deputy Clerk

EXHIBIT
STREET CLOSING REQUEST
JONESBORO CITY COUNCIL

MULHOLLEN & ASSOCIATES INC
 CIVIL ENGINEERING SERVICES
 JONESBORO ARKANSAS