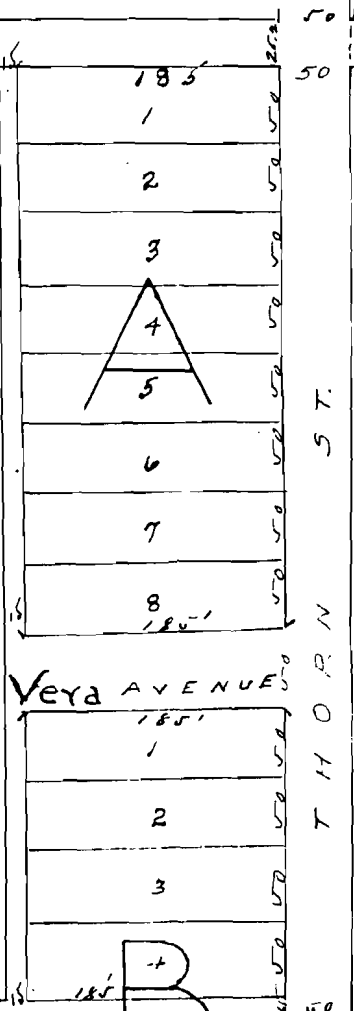


Point of beginning
Lot 3
Cobb's
86% NW
Sec 27-T1N

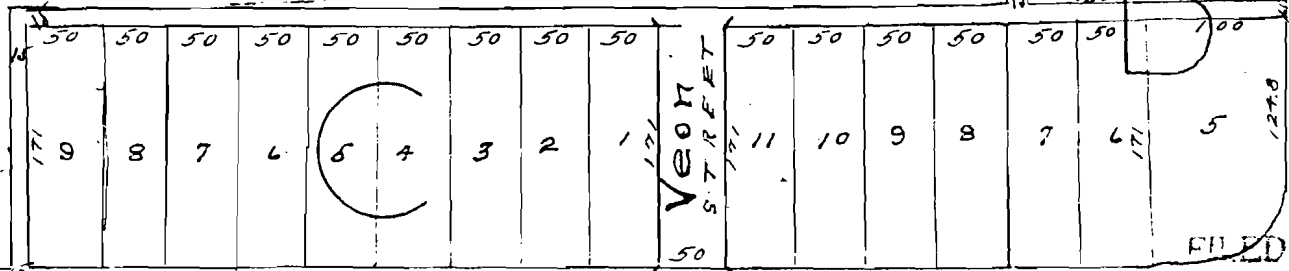
PLAT OF

EARL KIECH SECOND ADDITION TO NETTLETON, ARKANSAS.



SURVEY MADE JULY 6th 1946

By *Ben Eddins*
County Surveyor.



COUNTY ROAD

FILED FOR RECORD