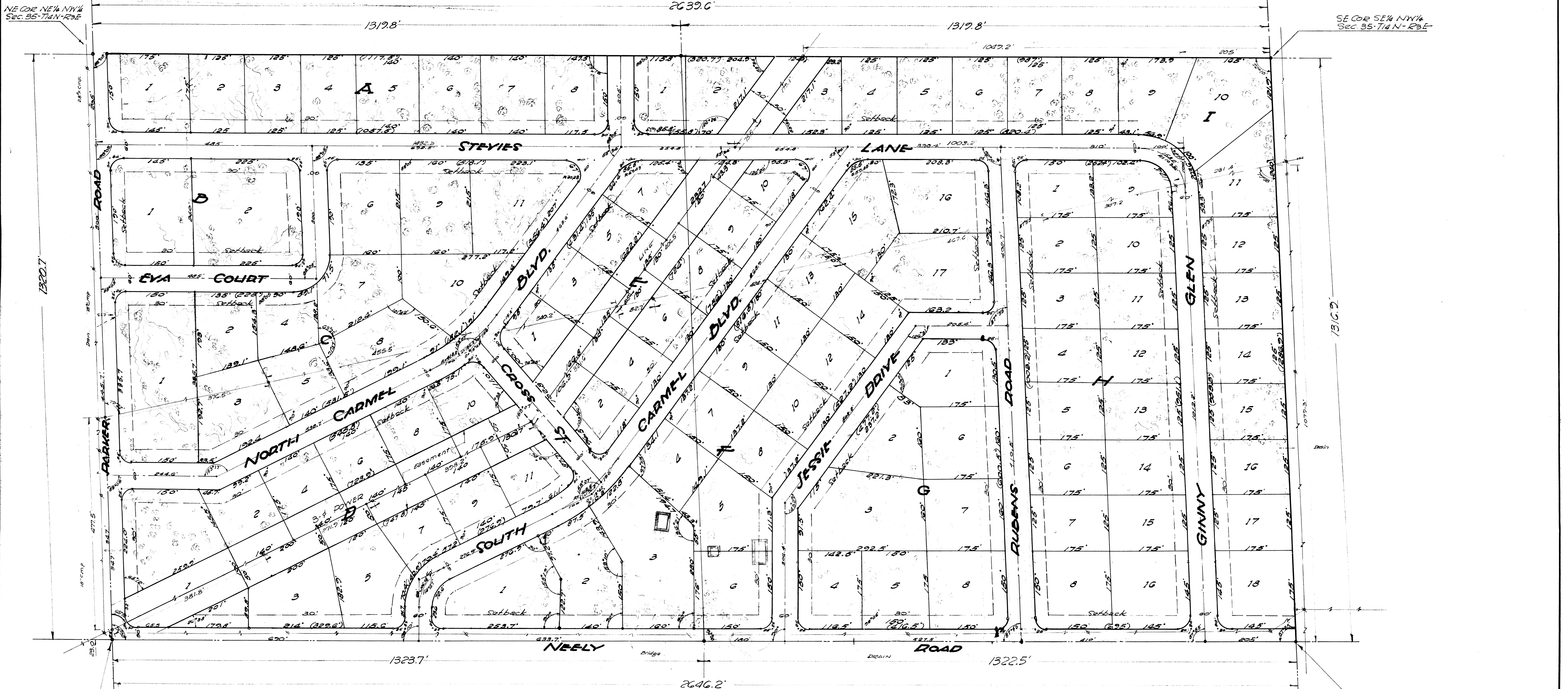
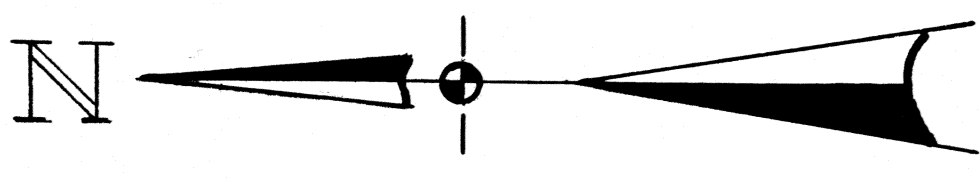
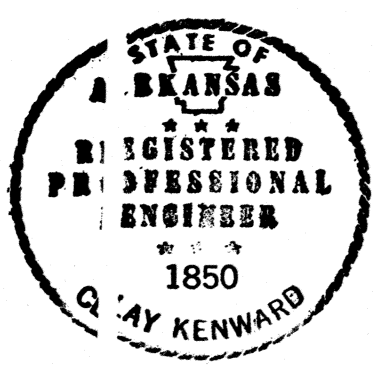


CERTIFICATE OF SURVEY

This is to certify that Fred Haywood & Associate, Registered Professional Civil Engineers, have surveyed the EM of the NW 1/4 of Sec. 35 T14N R3E, Craighead Co., Arkansas being more particularly as follows; Begin at the Northeast corner of the NW 1/4 of NW 1/4 of Sec. 35 T14N R3E thence West on the Section line 1320.7' to the Northwest corner of NW 1/4 of the NW 1/4 of Sec. 35 aforesaid; thence S1°50'W along the West line of the NW 1/4 of Sec. 35 aforesaid 2646.2' to the Southwest corner of SE 1/4 of Sec. 35; thence N89°45'E along the South line of the NW 1/4 of Sec. 35 T14N R3E 1316.9' to the Southeast corner of SE 1/4 of the NW 1/4 of Sec. 35 aforesaid; thence N1°55'E along the East line of NW 1/4 of the NW 1/4 of Sec. 35 aforesaid 2639.6' to the point of beginning. The above described tract contains 80.01 acres.

Fred Haywood & Associate

By *Fred Haywood*  
Reg. C.E. #459



**GRIFFIN SUBDIVISION**  
OF  
**1/2 OF NW 1/4 SEC. 35 T14N R3E**  
**CRAIGHEAD CO., ARK.**  
Scale 1"=100'  
Surveyed 2-14-68 By  
**FRED HAYWOOD & ASSOC.**

CALDWELL - GRIFFIN TRACT		
FRED HAYWOOD & ASSOCIATES Consulting Engineers - Jonesboro, Ark.	SCALE 1"=100'	DRAWN BY C.K.
NE 1/4 NW 1/4 - SE 1/4 NW 1/4 - SEC. 35-14-3		
DATE 2-14-68	APPROVED BY	DRAWING NUMBER Y-138

