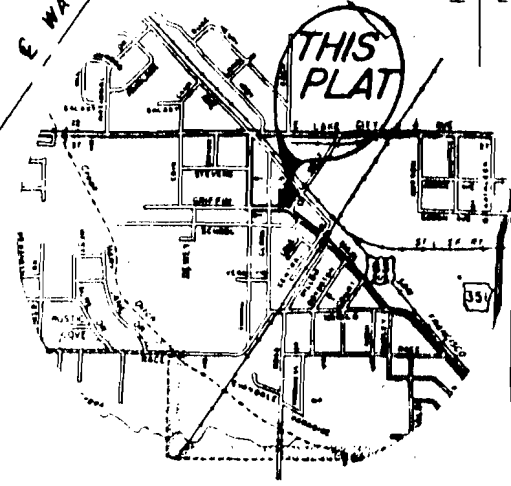
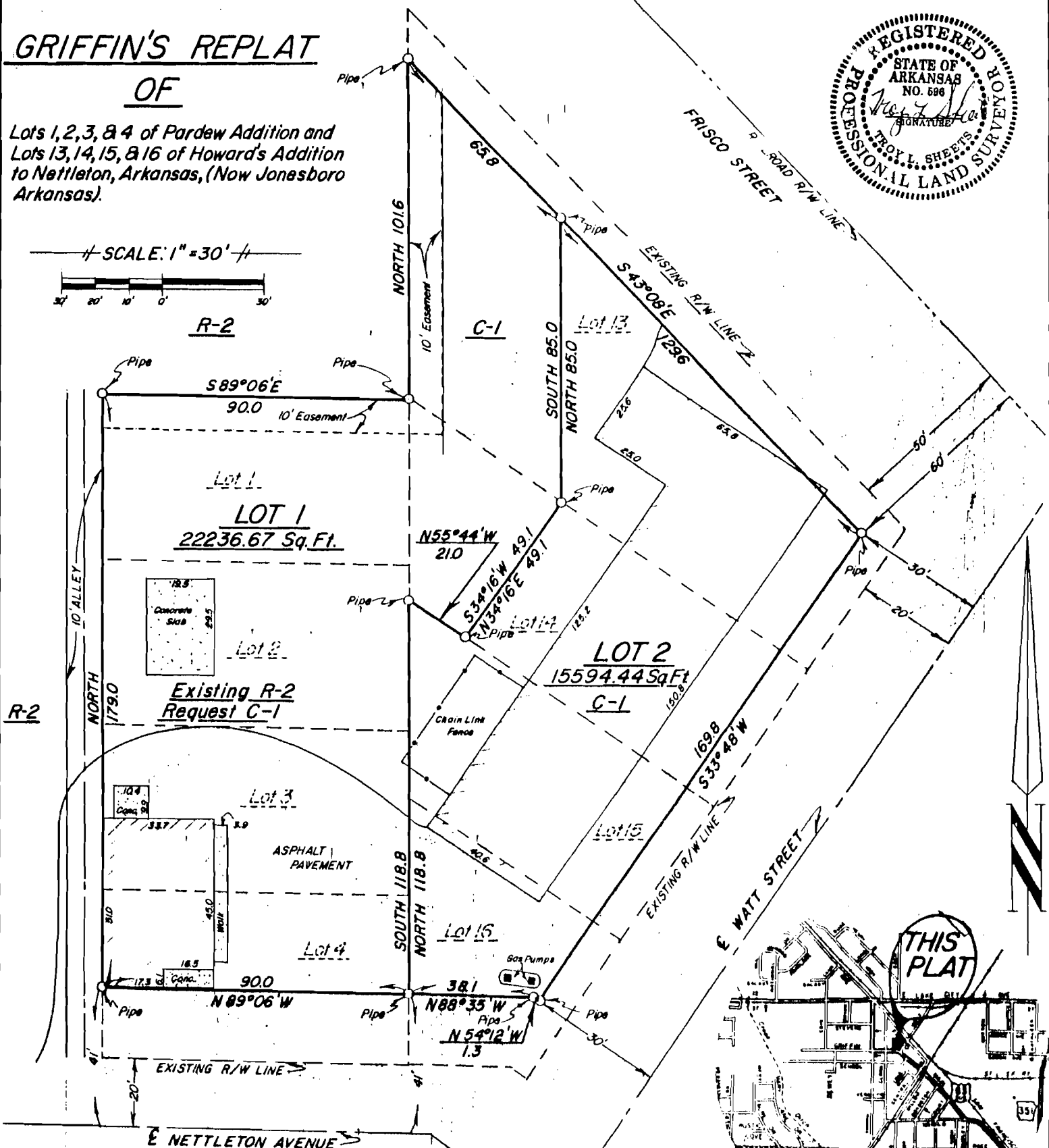
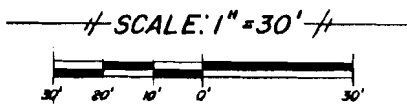
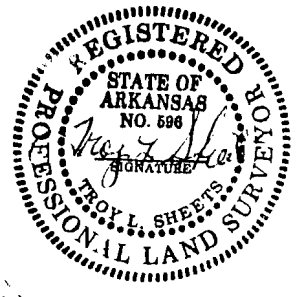


GRIFFIN'S REPLAT OF

Lots 1, 2, 3, & 4 of Pardew Addition and
Lots 13, 14, 15, & 16 of Howard's Addition
to Nettleton, Arkansas, (Now Jonesboro
Arkansas).



VICINITY MAP
SCALE: 1" = 2000'

CERTIFICATE OF REPLAT

This is to certify that I, Troy L. Sheets, have replated Lots 1, 2, 3, and 4 of Pardew Addition and Lots 13, 14, 15, and 16 of Howard's Additon to Nettleton, Arkansas, (Now Jonesboro, Arkansas).

OWNERS CERTIFICATION

We hereby certify that we are the owners of the property shown and described hereon, that we adopt the plan of subdivision and dedicate perpetual use of streets and easements as noted.

Ruben Griffin

DATE Nov. 17, 1989

TROY L. SHEETS
SURVEYING
500 W. MONROE
JONESBORO, ARKANSAS

RUBEN GRIFFIN