

| | | | | | | |
|---|--------------|--------------------|-------|---------|-----------|--------------|
| DATE REVISED | DATE REVISED | FED. RD. DIST. NO. | STATE | JOB NO. | SHEET NO. | TOTAL SHEETS |
| | | 6 | ARK. | 101073 | | |
| HWY. 351 CONNECT. (AGGIE RD.) (JONESBORO) (S) | | | | | | |

ARKANSAS DEPARTMENT OF TRANSPORTATION
CONSTRUCTION PLANS FOR STATE HIGHWAY

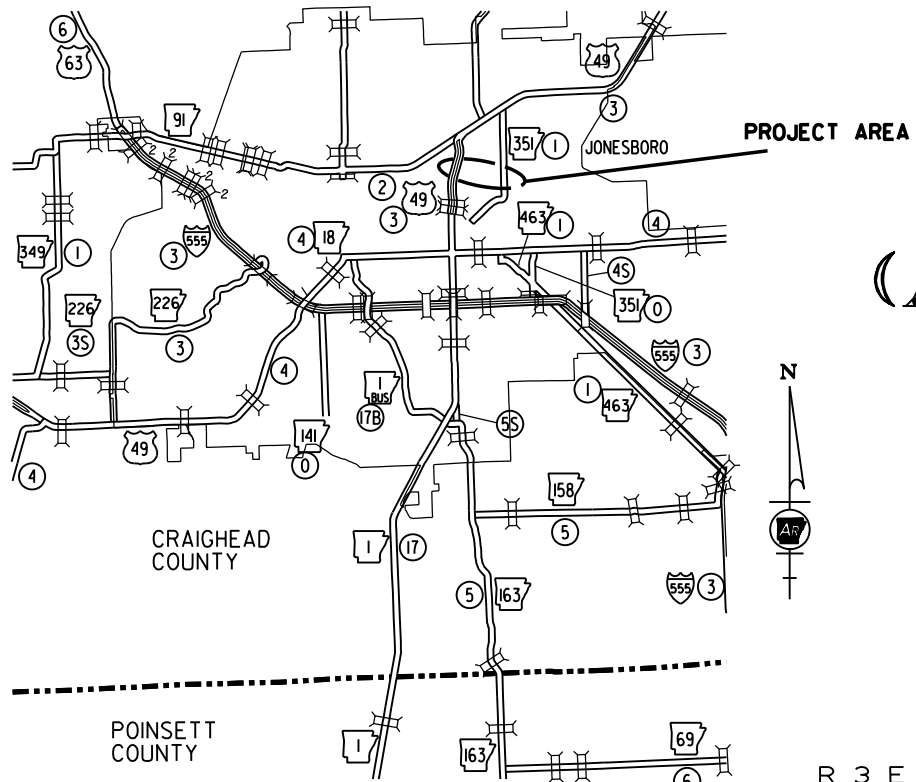


**HWY. 351 CONNECTOR
(AGGIE RD.) (JONESBORO) (S)**

CRAIGHEAD COUNTY
NEW LOCATION

JOB 101073

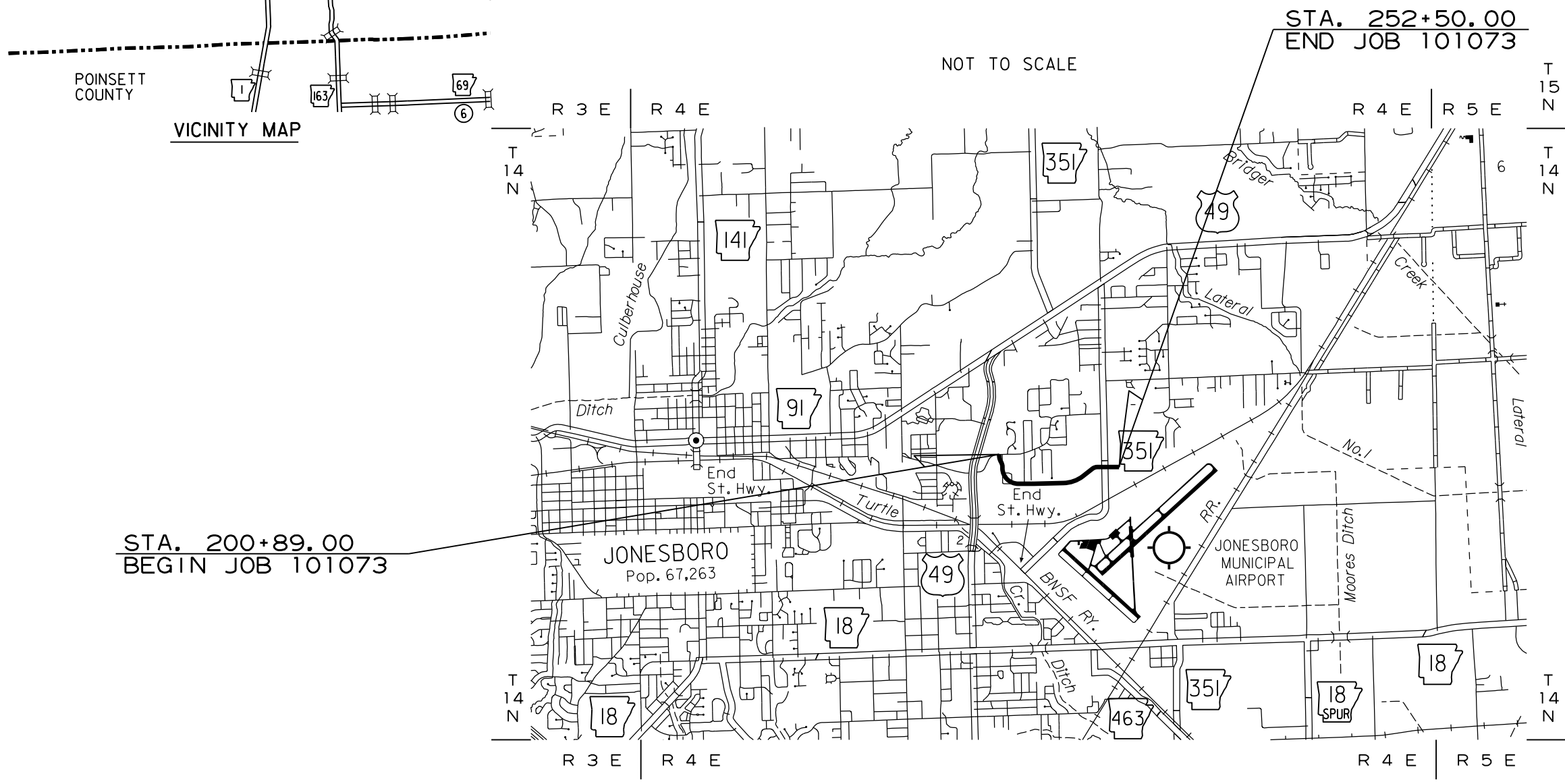
FED. AID PROJ. NHPP-XXXX(X)



ARK. HWY. DIST. NO. 10

DESIGN TRAFFIC DATA

| | |
|--------------------------|-------------|
| DESIGN YEAR |2045 |
| 2025 ADT |N/A |
| 2045 ADT |10,000 |
| 2045 DHV |1,100 |
| DIRECTIONAL DISTRIBUTION |0.60 |
| TRUCKS |1% |
| DESIGN SPEED |35 MPH |



| | BEGIN PROJECT | MID-POINT OF PROJECT | END PROJECT |
|-----------|---------------|----------------------|-------------|
| LATITUDE | N 35°50'33" | N 35°50'20" | N 35°50'22" |
| LONGITUDE | W 90°39'52" | W 90°39'29" | W 90°38'57" |

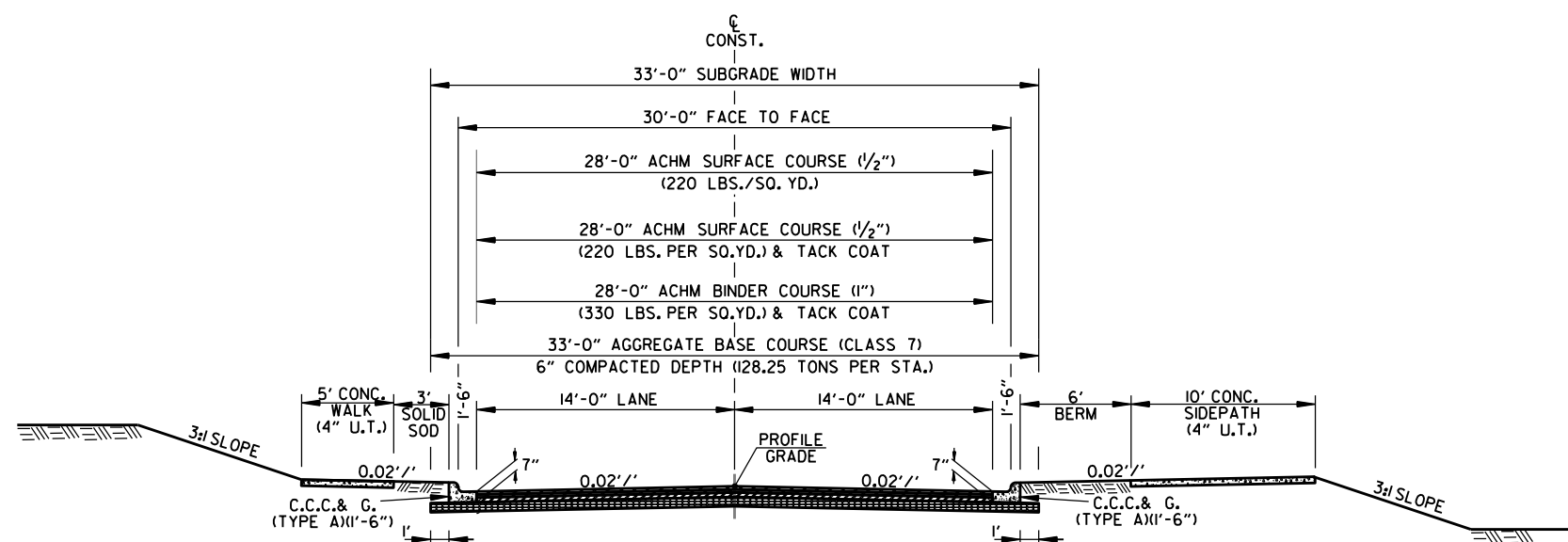
LENGTH OF PROJECT CALCULATED ALONG C.L.

| | | | | | |
|-------------------------|---------|------|----|-------|-------|
| GROSS LENGTH OF PROJECT | 5161.00 | FEET | OR | 0.977 | MILES |
| NET ROADWAY | 5161.00 | | | 0.977 | MILES |
| NET BRIDGES | 00.00 | | | 0.000 | MILES |
| NET PROJECT | 5161.00 | | | 0.977 | MILES |

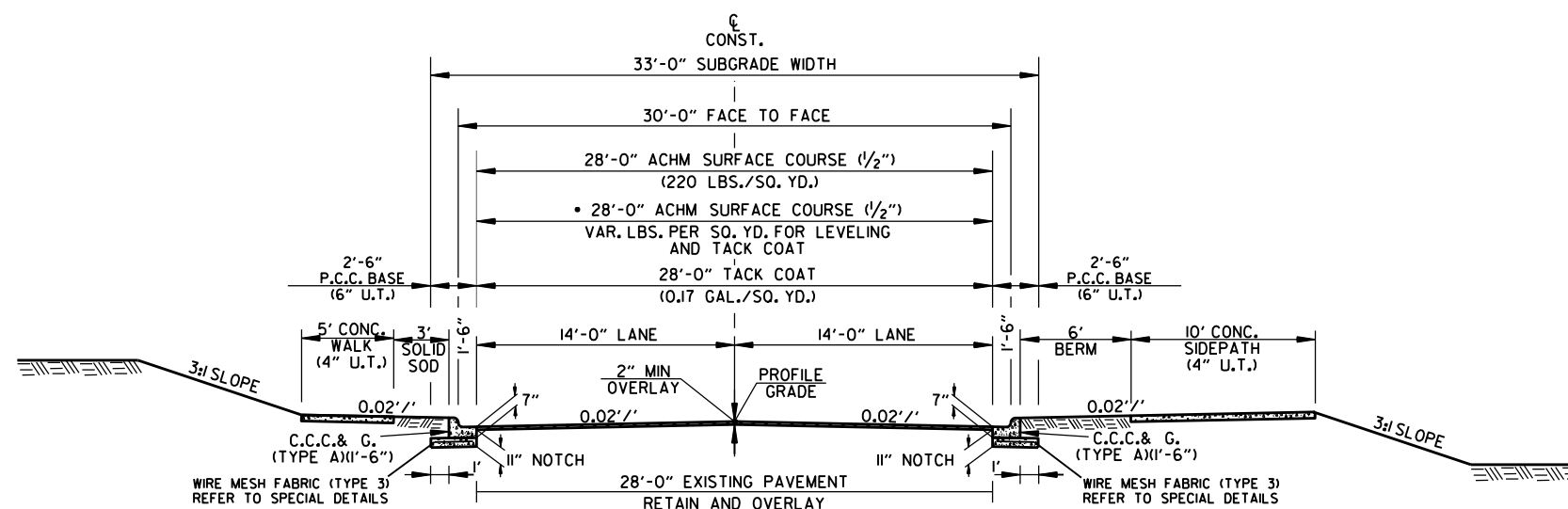
PRELIMINARY
SUBJECT TO REVISION

| DATE REVISED | DATE REVISED | FED. RD. DIST. NO. | STATE | JOB NO. | SHEET NO. | TOTAL SHEETS |
|---------------------------------|--------------|--------------------|-------|---------|-----------|--------------|
| | | 6 | ARK. | 101073 | | |
| TYPICAL SECTIONS OF IMPROVEMENT | | | | | | |

PRELIMINARY
SUBJECT TO REVISION



HHWY. 351 CONNECTOR
C.C.C.&G. FULL DEPTH
STA. 202+25.00 TO STA. 248+43.00
STA. 252+50.00 TO STA. 253+20.00

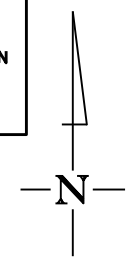
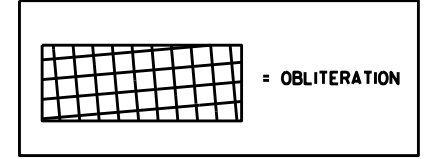


HHWY. 351 CONNECTOR
C.C.C.&G. NOTCH & WIDEN
STA. 253+20.00 TO 253+50.00

TYPICAL SECTIONS OF IMPROVEMENT

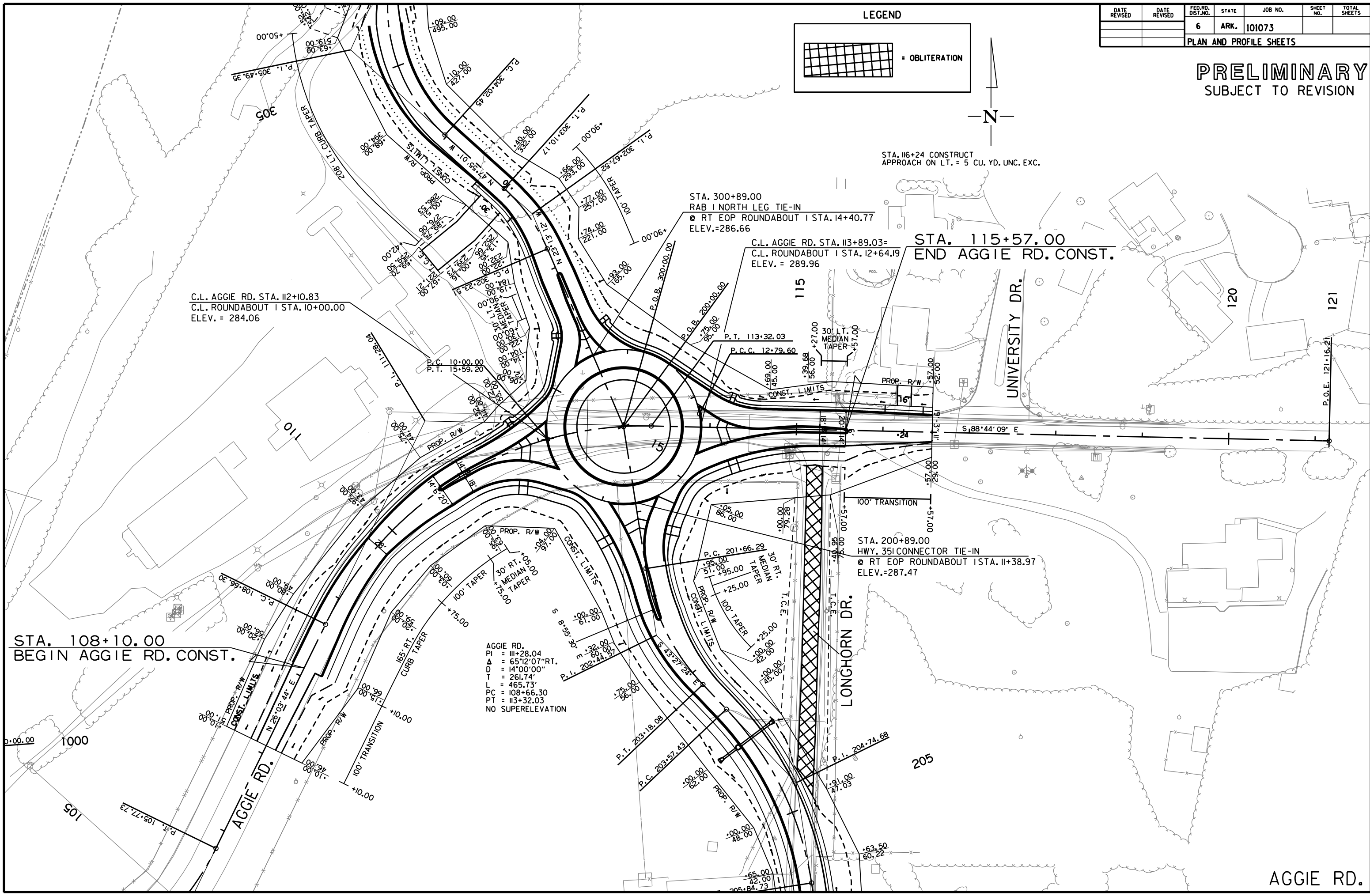
| DATE REVISION | DATE REVISION | FED. RD. DIST. NO. | STATE | JOB NO. | SHEET NO. | TOTAL SHEETS |
|-------------------------|---------------|--------------------|-------|---------|-----------|--------------|
| | | 6 | ARK. | 101073 | | |
| PLAN AND PROFILE SHEETS | | | | | | |

LEGEND



PRELIMINARY
SUBJECT TO REVISION

STA. 116+24 CONSTRUCT
APPROACH ON LT. = 5 CU. YD. UNC. EXC.



C.L. AGGIE RD. STA. 112+10.83
C.L. ROUNDABOUT I STA. 10+00.00
ELEV. = 284.06

STA. 300+89.00
RAB I NORTH LEG TIE-IN
RT EOP ROUNDABOUT I STA. 14+40.77
ELEV.=286.66

STA. 115+57.00
END AGGIE RD. CONST.

C.L. AGGIE RD. STA. 113+89.03=
C.L. ROUNDABOUT I STA. 12+64.19
ELEV. = 289.96

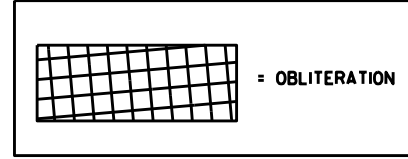
STA. 200+89.00
HWY. 351 CONNECTOR TIE-IN
RT EOP ROUNDABOUT I STA. 11+38.97
ELEV.=287.47

AGGIE RD.
PI = 113+28.04
Δ = 65°12'07" RT.
D = 14°00'00"
T = 261.74'
L = 465.73'
PC = 108+66.30
PT = 113+32.03
NO SUPERELEVATION

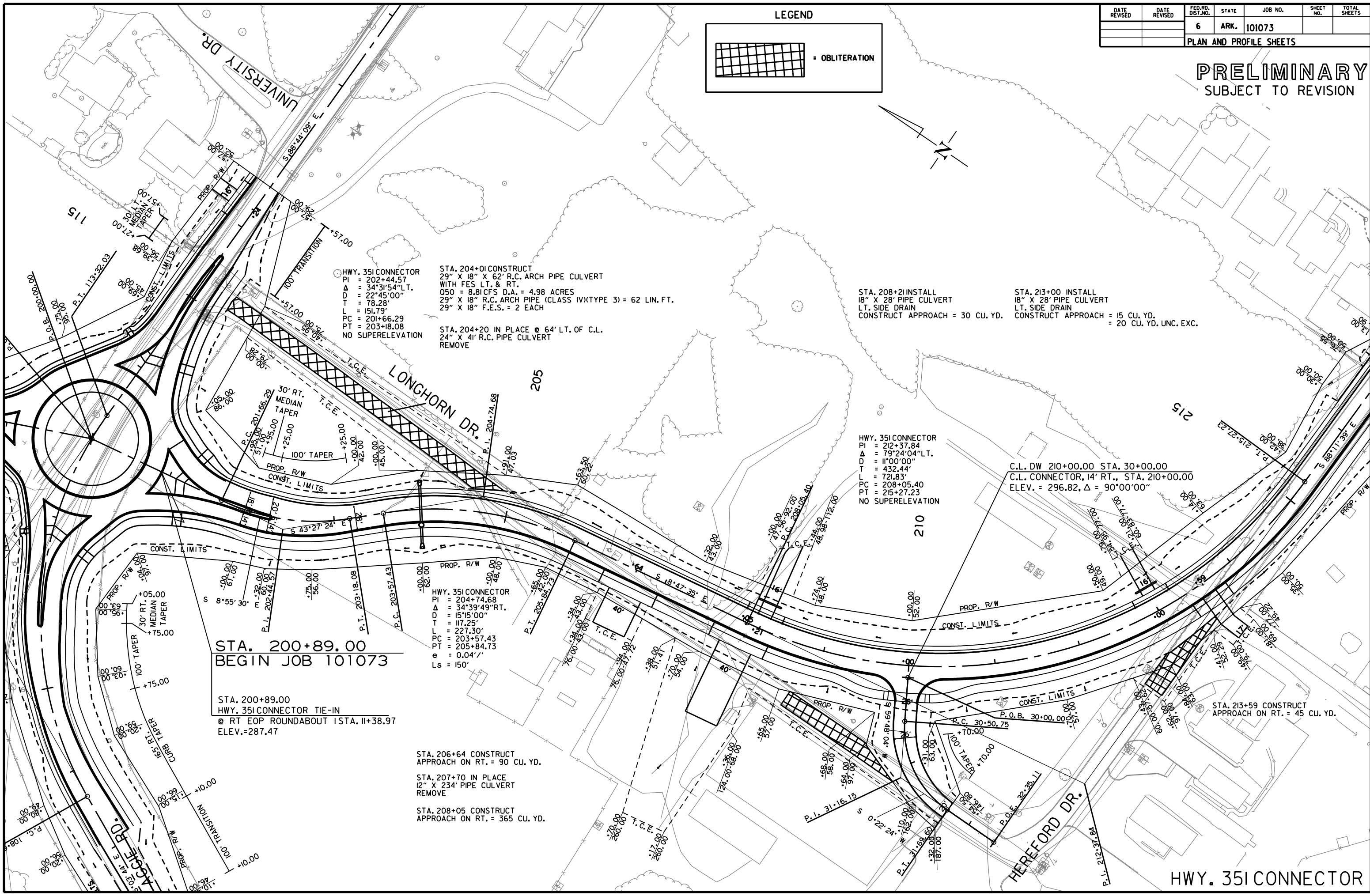
STA. 108+10.00
BEGIN AGGIE RD. CONST.

| DATE REVISION | DATE REVISION | FED. RD. DIST. NO. | STATE | JOB NO. | SHEET NO. | TOTAL SHEETS |
|-------------------------|---------------|--------------------|-------|---------|-----------|--------------|
| | | 6 | ARK. | 101073 | | |
| PLAN AND PROFILE SHEETS | | | | | | |

LEGEND



PRELIMINARY
SUBJECT TO REVISION

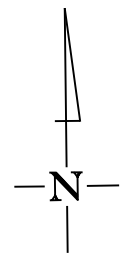


JB44269 2/21/2024
R101073.DGN

HWY. 351 CONNECTOR

| DATE REVISION | DATE REVISION | FED. RD. DIST. NO. | STATE | JOB NO. | SHEET NO. | TOTAL SHEETS |
|-------------------------|---------------|--------------------|-------|---------|-----------|--------------|
| | | 6 | ARK. | 101073 | | |
| PLAN AND PROFILE SHEETS | | | | | | |

PRELIMINARY
SUBJECT TO REVISION



STA. 216+90 IN PLACE
29" X 18" X 8' R.C. ARCH PIPE INLET
AND DROP INLET ON LT. AND
29" X 18" X 26' R.C. ARCH PIPE OUTLET
CONNECTED TO DROP INLET ON RT. AND
29" X 18" X 14' R.C. PIPE OUTLET
REMOVE AND CONSTRUCT
54" X 69' PIPE CULVERT
WITH HEAD WALL LT. & FES RT.
050 = 56.00 CFS D.A. = 25.66 ACRES
54" R.C. PIPE (CLASS IV)(TYPE 3) = 70 LIN. FT.
54" ASPH. COAT. CSP (TYPE 2) = 70 LIN. FT.
54" ALUM. COAT. CSP (TYPE 2) = 70 LIN. FT.
54" PLOY. COAT. CSP (TYPE 2) = 70 LIN. FT.
54" F.E.S. = 1 EACH

STA. 224+55 IN PLACE
29" X 18" X 8' R.C. ARCH PIPE INLET
AND DROP INLET ON LT. AND
29" X 18" X 25' R.C. ARCH PIPE OUTLET
CONNECTED TO DROP INLET ON RT. AND
29" X 18" X 13' R.C. ARCH PIPE OUTLET
REMOVE

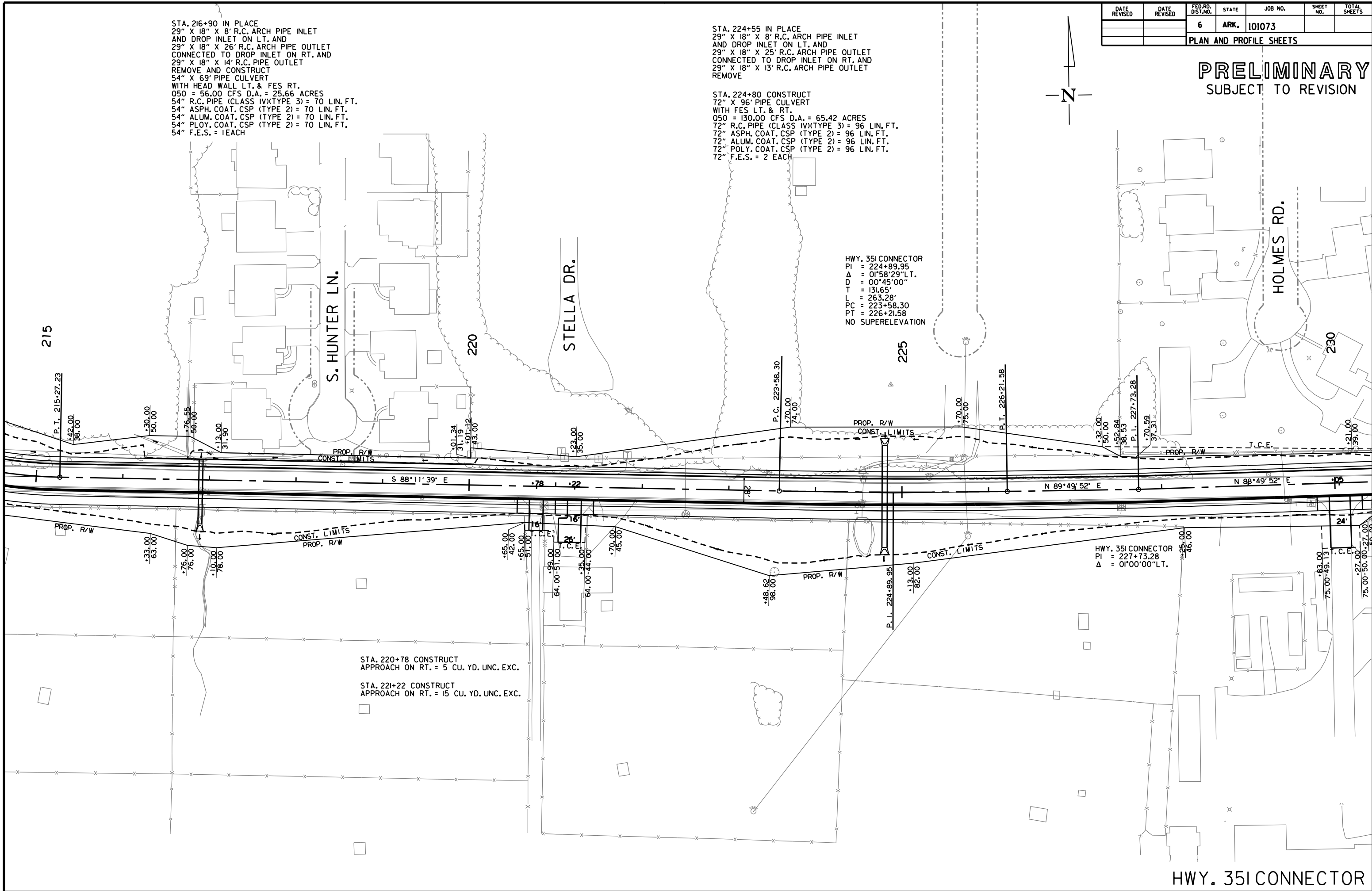
STA. 224+80 CONSTRUCT
72" X 96' PIPE CULVERT
WITH FES LT. & RT.
050 = 130.00 CFS D.A. = 65.42 ACRES
72" R.C. PIPE (CLASS IV)(TYPE 3) = 96 LIN. FT.
72" ASPH. COAT. CSP (TYPE 2) = 96 LIN. FT.
72" ALUM. COAT. CSP (TYPE 2) = 96 LIN. FT.
72" POLY. COAT. CSP (TYPE 2) = 96 LIN. FT.
72" F.E.S. = 2 EACH

HWY. 35I CONNECTOR
PI = 224+89.95
 $\Delta = 01^{\circ}58'29''$ LT.
D = $00^{\circ}45'00''$
T = 131.65'
L = 263.28'
PC = 223+58.30
PT = 226+21.58
NO SUPERELEVATION

HWY. 35I CONNECTOR
PI = 227+73.28
 $\Delta = 01^{\circ}00'00''$ LT.

STA. 220+78 CONSTRUCT
APPROACH ON RT. = 5 CU. YD. UNC. EXC.

STA. 221+22 CONSTRUCT
APPROACH ON RT. = 15 CU. YD. UNC. EXC.



HWY. 35I CONNECTOR

| DATE REVISED | DATE REVISED | FED. RD. DIST. NO. | STATE | JOB NO. | SHEET NO. | TOTAL SHEETS |
|-------------------------|--------------|--------------------|-------|---------|-----------|--------------|
| | | 6 | ARK. | 101073 | | |
| PLAN AND PROFILE SHEETS | | | | | | |

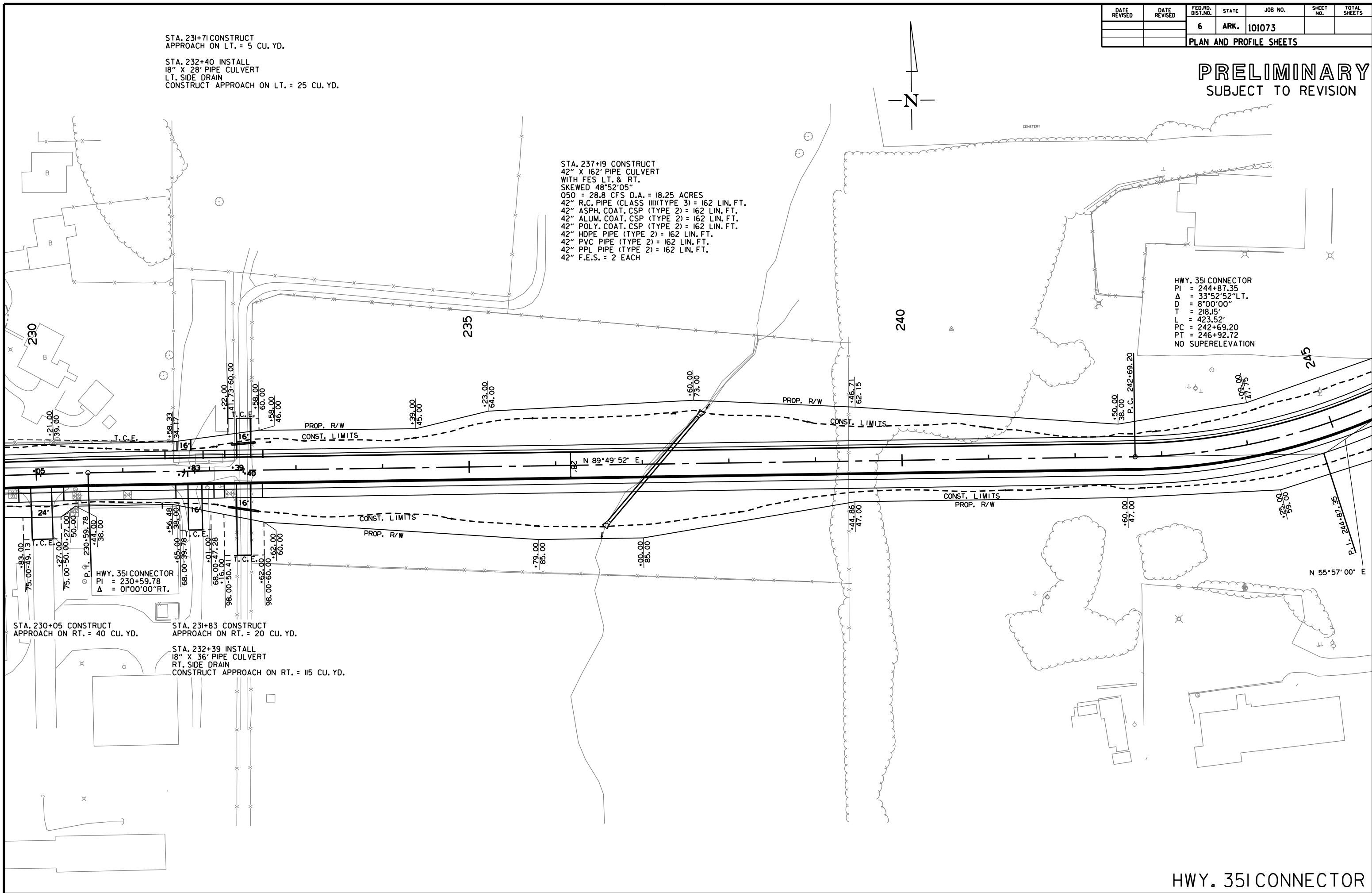
STA. 231+71 CONSTRUCT
APPROACH ON LT. = 5 CU. YD.

STA. 232+40 INSTALL
18" X 28' PIPE CULVERT
LT. SIDE DRAIN
CONSTRUCT APPROACH ON LT. = 25 CU. YD.

PRELIMINARY
SUBJECT TO REVISION

STA. 237+19 CONSTRUCT
42" X 162' PIPE CULVERT
WITH FES LT. & RT.
SKEWED 48°52'05"
050 = 28.8 CFS D.A. = 18.25 ACRES
42" R.C. PIPE (CLASS III)(TYPE 3) = 162 LIN. FT.
42" ASPH. COAT. CSP (TYPE 2) = 162 LIN. FT.
42" ALUM. COAT. CSP (TYPE 2) = 162 LIN. FT.
42" POLY. COAT. CSP (TYPE 2) = 162 LIN. FT.
42" HDPE PIPE (TYPE 2) = 162 LIN. FT.
42" PVC PIPE (TYPE 2) = 162 LIN. FT.
42" PPL PIPE (TYPE 2) = 162 LIN. FT.
42" F.E.S. = 2 EACH

HWY. 351 CONNECTOR
PI = 244+87.35
Δ = 33°52'52"LT.
D = 8°00'00"
T = 218.15'
L = 423.52'
PC = 242+69.20
PT = 246+92.72
NO SUPERELEVATION

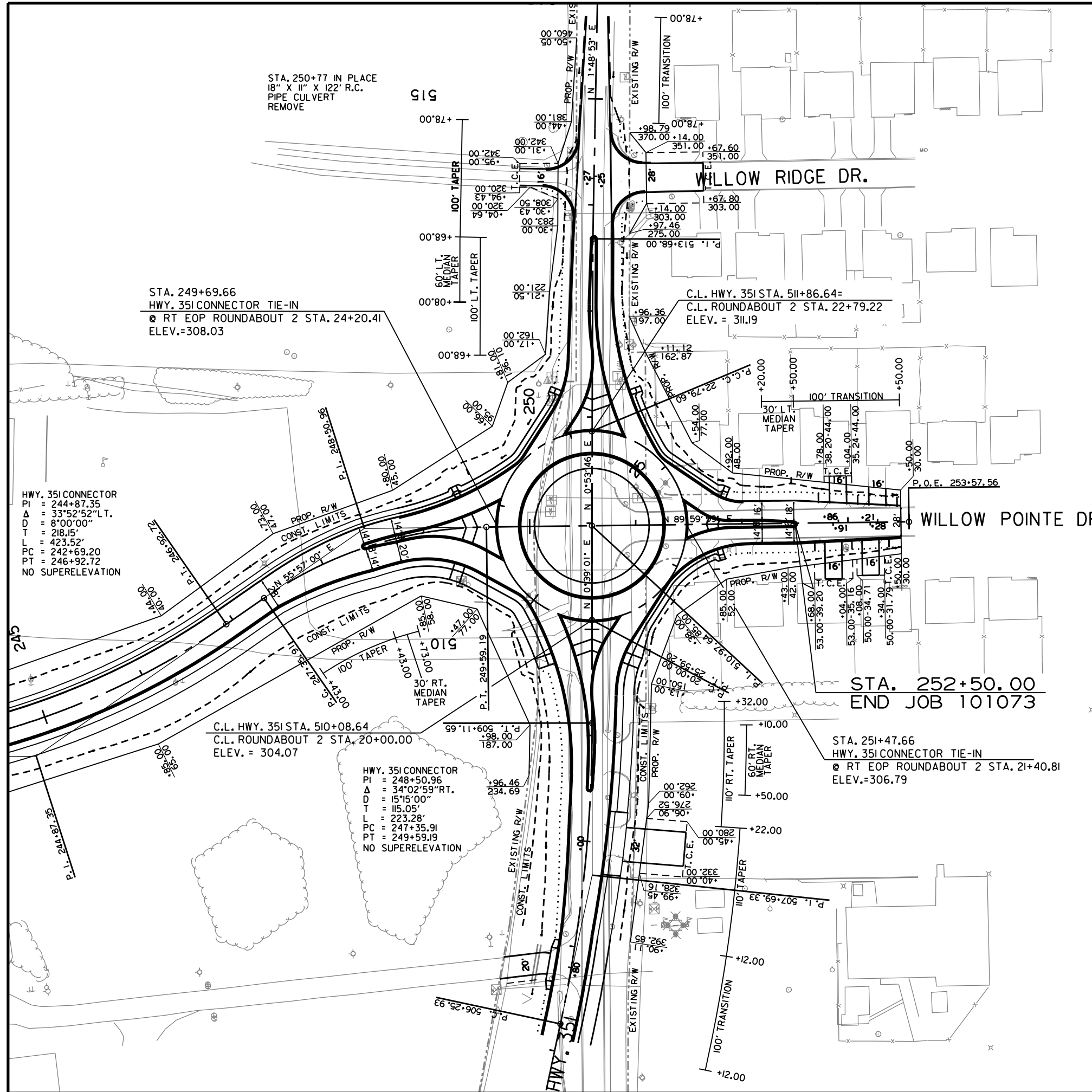
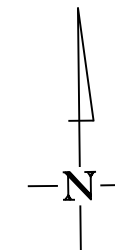


JB44269 2/21/2024
R101073.DGN

HWY. 351 CONNECTOR

| DATE REVISION | DATE REVISION | FED. RD. DIST. NO. | STATE | JOB NO. | SHEET NO. | TOTAL SHEETS |
|-------------------------|---------------|--------------------|-------|---------|-----------|--------------|
| | | 6 | ARK. | 101073 | | |
| PLAN AND PROFILE SHEETS | | | | | | |

PRELIMINARY
SUBJECT TO REVISION



STA. 250+77 IN PLACE
18" X 11" X 122' R.C.
PIPE CULVERT
REMOVE

STA. 249+69.66
HWY. 351 CONNECTOR TIE-IN
RT EOP ROUNDABOUT 2 STA. 24+20.41
ELEV.=308.03

HWY. 351 CONNECTOR
PI = 244+87.35
Δ = 33°52'52" L.T.
D = 8'00"00"
T = 218.15'
L = 423.52'
PC = 242+69.20
PT = 246+92.72
NO SUPERELEVATION

C.L. HWY. 351 STA. 510+08.64
C.L. ROUNDABOUT 2 STA. 20+00.00
ELEV. = 304.07

HWY. 351 CONNECTOR
PI = 248+50.96
Δ = 34°02'59" R.T.
D = 15'15"00"
T = 115.05'
L = 223.28'
PC = 247+35.91
PT = 249+59.19
NO SUPERELEVATION

C.L. HWY. 351 STA. 511+86.64=
C.L. ROUNDABOUT 2 STA. 22+79.22
ELEV. = 311.19

STA. 252+50.00
END JOB 101073

STA. 251+47.66
HWY. 351 CONNECTOR TIE-IN
RT EOP ROUNDABOUT 2 STA. 21+40.81
ELEV.=306.79

STA. 252+91 CONSTRUCT
APPROACH ON LT. = 5 CU. YD.

STA. 253+28 CONSTRUCT
APPROACH ON LT. = 5 CU. YD.

STA. 252+86 CONSTRUCT
APPROACH ON RT. = 20 CU. YD.

STA. 253+21 CONSTRUCT
APPROACH ON RT. = 10 CU. YD.

HWY. 351 CONNECTOR

JB44269 2/21/2024
R101073.DGN