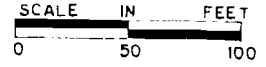
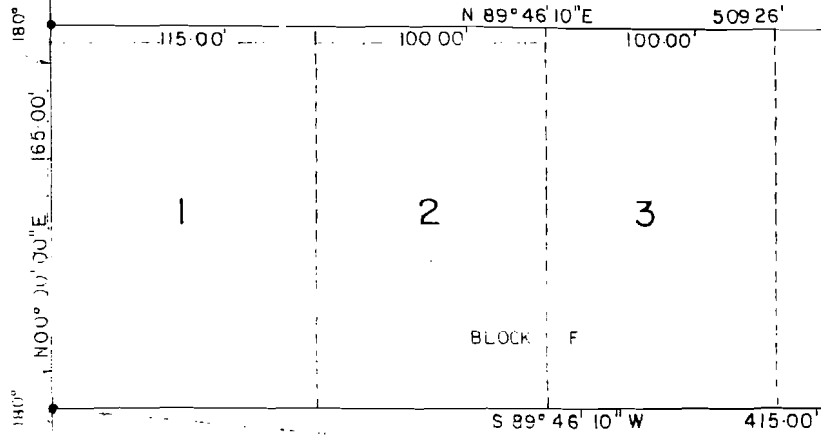


FOUND AXLE

NW CORNER SW 1/4 NW 1/4 SECTION 10, T-14-N, R-4-E

• DENOTES SET IRON PIN



FOUND

I, the undersigned, being a duly qualified and licensed land surveyor in the State of Arkansas, do hereby certify that the foregoing is a true and correct copy of the original survey plat as the same appears in my files, and that the same was prepared by me or under my direct supervision and in accordance with the provisions of the laws of the State of Arkansas relating to the practice of the profession of land surveying.

REGISTERED PROFESSIONAL ENGINEER

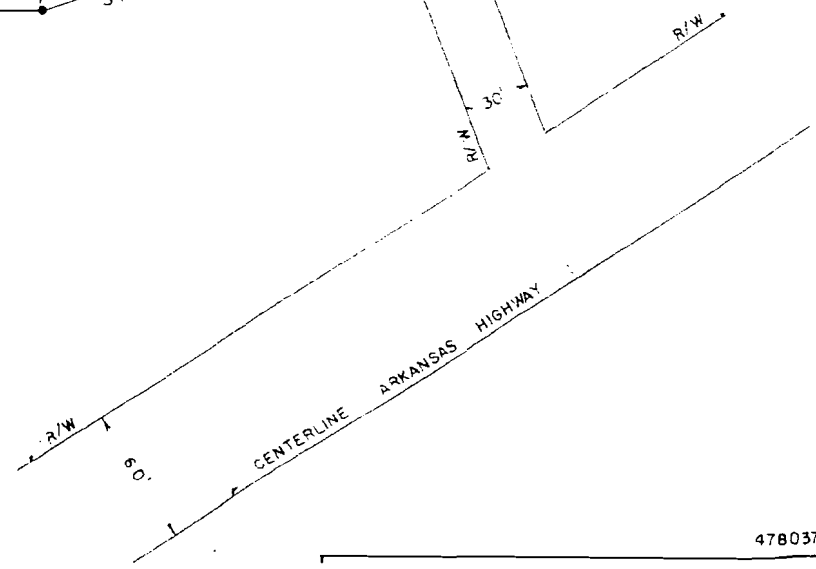
I, the undersigned, being a duly qualified and licensed land surveyor in the State of Arkansas, do hereby certify that the foregoing is a true and correct copy of the original survey plat as the same appears in my files, and that the same was prepared by me or under my direct supervision and in accordance with the provisions of the laws of the State of Arkansas relating to the practice of the profession of land surveying.

*Dan B. Mulhollen*  
 DAN B. MULHOLLEN  
 REGISTERED LAND SURVEYOR  
 STATE OF ARKANSAS  
 NO. 646

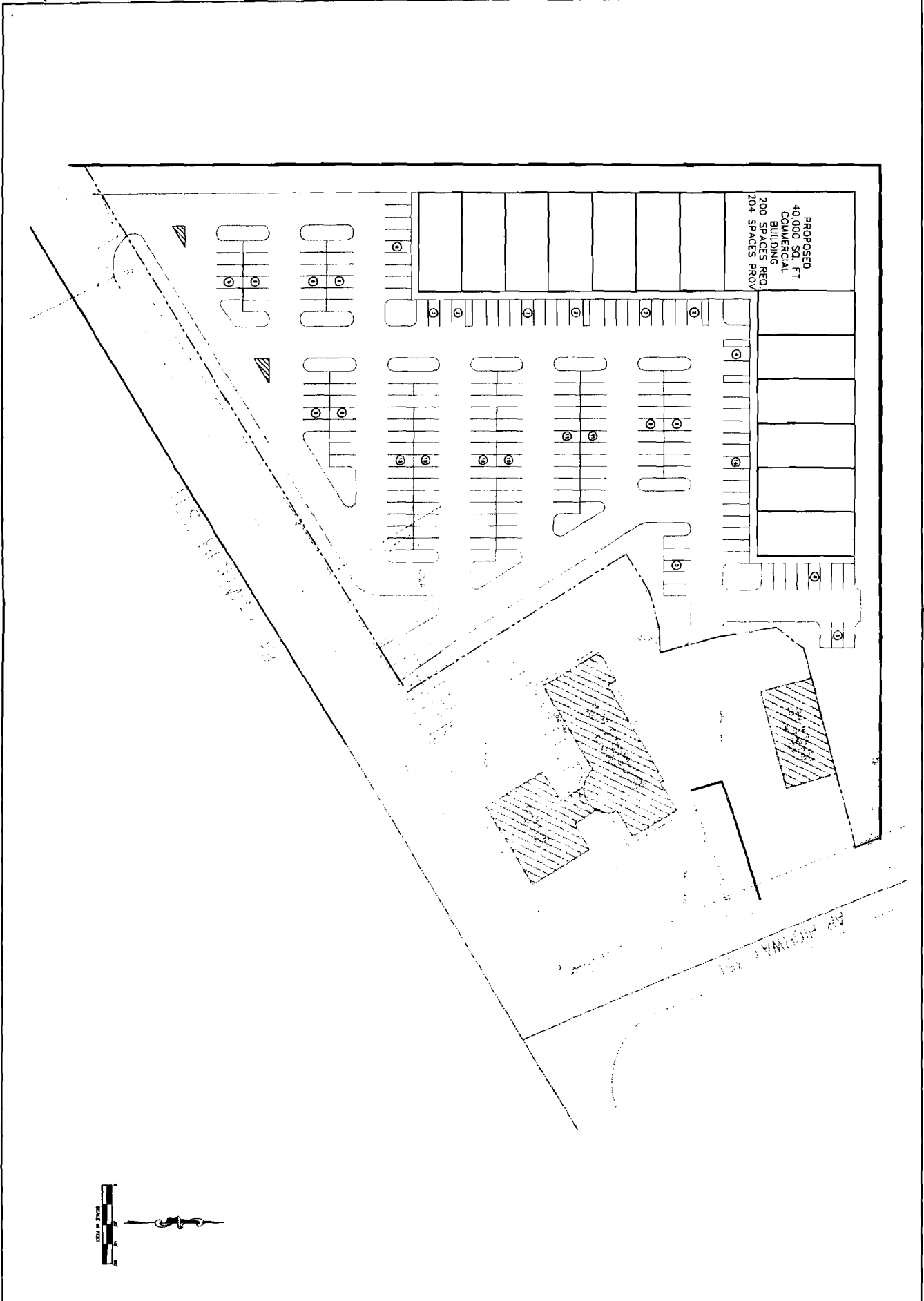
F W CALDWELL'S SUBDIVISION  
 of part of the SW 1/4, NW 1/4, Section 10  
 Twp 14 N - Range 4 E



DAN B. MULHOLLEN  
 REGISTERED  
 LAND SURVEYOR  
 STATE OF  
 ARKANSAS  
 NO. 646



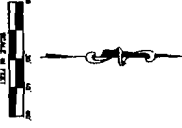
478037



PROPOSED  
40,000 SQ. FT.  
COMMERCIAL  
BUILDING  
200 SPACES REQ.  
20+ SPACES PROV.

U.S. HIGHWAY 49

AR HIGHWAY 351



C-1  
SITE PLAN

**BA Engineering**  
ENGINEERING  
4825 TROUSDALE, SUITE 218 NASHVILLE, TENNESSEE 37220  
PHONE: (615) 834-8383 FAX: (615) 834-8288 email: BAEng@aol.com

**OPTION #3**  
HIGHWAY 49 + HIGHWAY 351  
JONESBORO, ARKANSAS

REV	DATE	DESCRIPTION	BY