



Fisher & Arnold, Inc.
Jeremy Bevill, PE

RE: Easement Abandonment – Portion of Promise Lane, Jonesboro, AR

Legal description of the property: "Portion of Promise Lane as shown on the Earl Kiech Second Additoin Plat (Deed Record 110, Page 14) and the included survey/vicinity Map. This area is desribed more patricularly as followed: The alley extends along the west edge of Lots 1 through 7. The entire area is 15ft by 350ft, and lies within S27 T14 R04 Jonesboro, Craighead County, Arkansas"

Dear Jeremy Bevill:

After reviewing your request of the Easement Abandonment in Jonesboro, AR, Altice USA d/b/a Suddenlink Communications has verified there is not active CATV facilities in this easement.

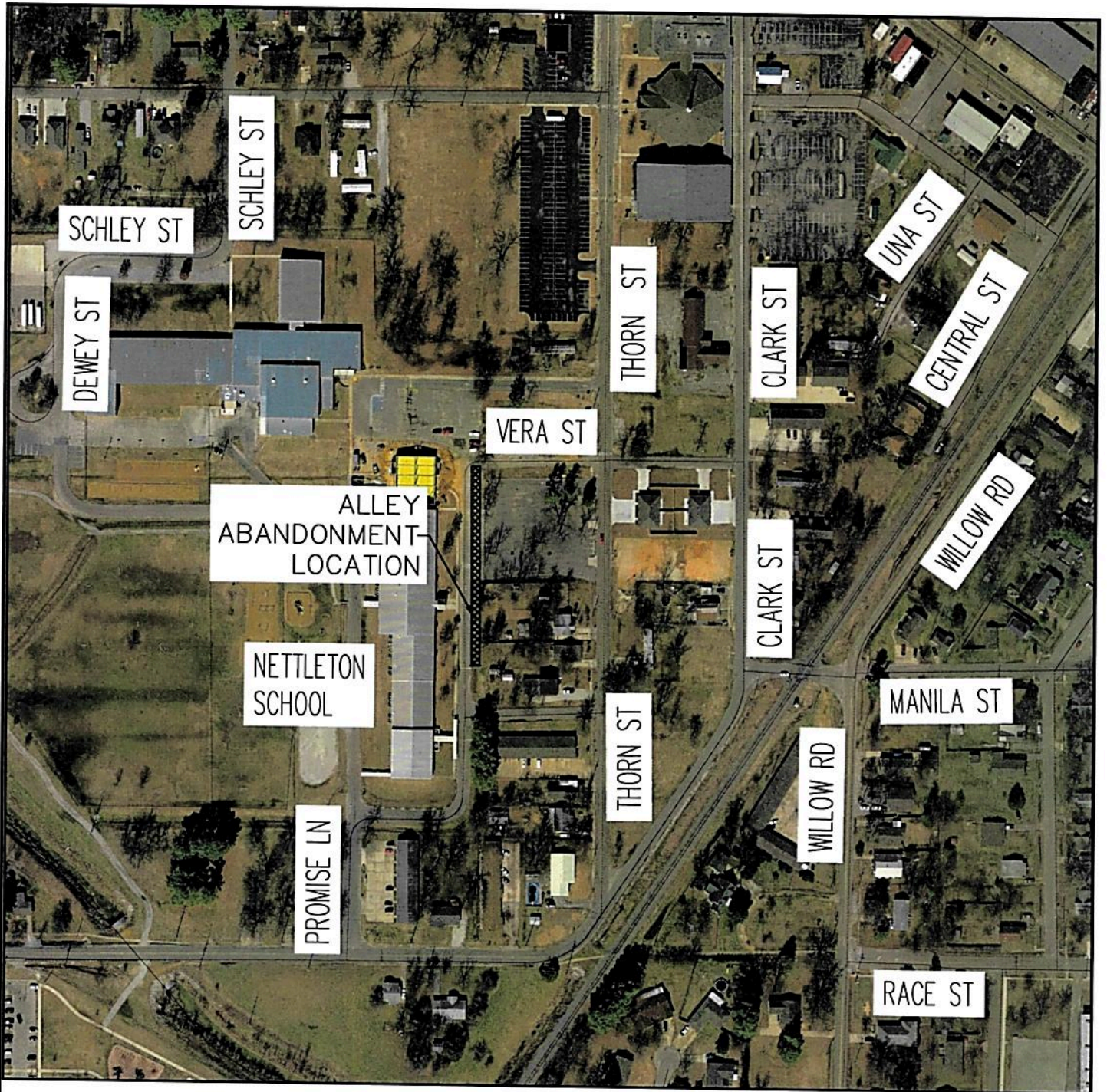
Given the verification stated above, Altice USA has no objection with the requested Easement Abandonment.

Yours truly,

A handwritten signature in black ink, appearing to read 'Mike Alexander', written over a horizontal line.

Mike Alexander

VP, Engineering & Construction



VICINITY MAP
(NOT TO SCALE)

EXHIBIT A

FISHER AND ARNOLD INC.
ENGINEERS | ARCHITECTS | SURVEYORS | PLANNERS
1801 LATOURETTE DRIVE
JONESBORO, ARKANSAS 72404

TEL 870-932-2019

FAX 870-932-1076