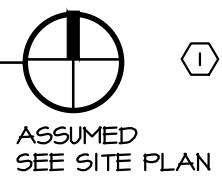


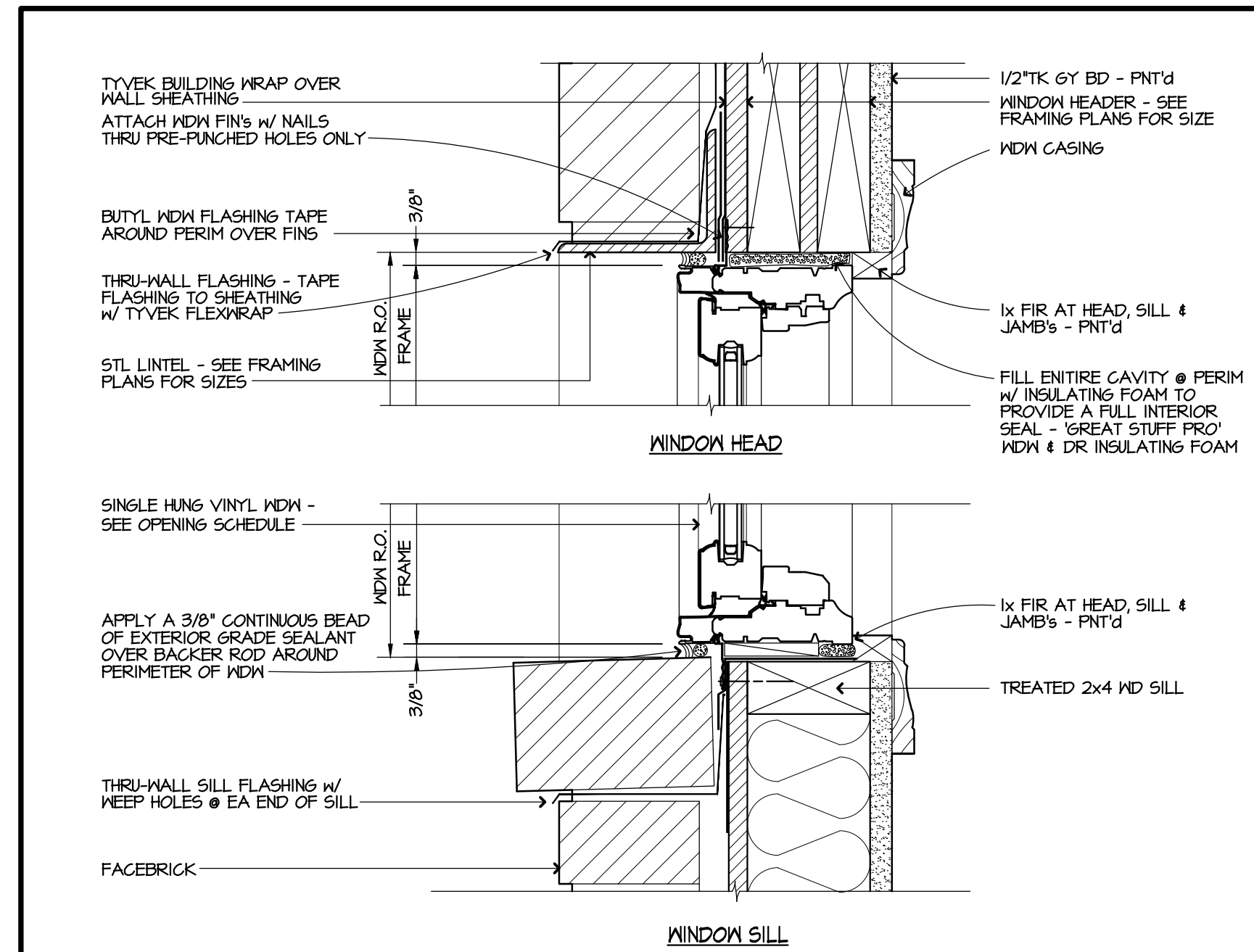
FLOOR PLAN "A"
1/4"

SQUARE FOOTAGE CALCULATIONS:

LIVING SPACE (H/C) 1,251 SQ.FT.
GARAGE & PORCH (NON H/C) 342 SQ.FT.
TOTAL AREA 1,443 SQ.FT.

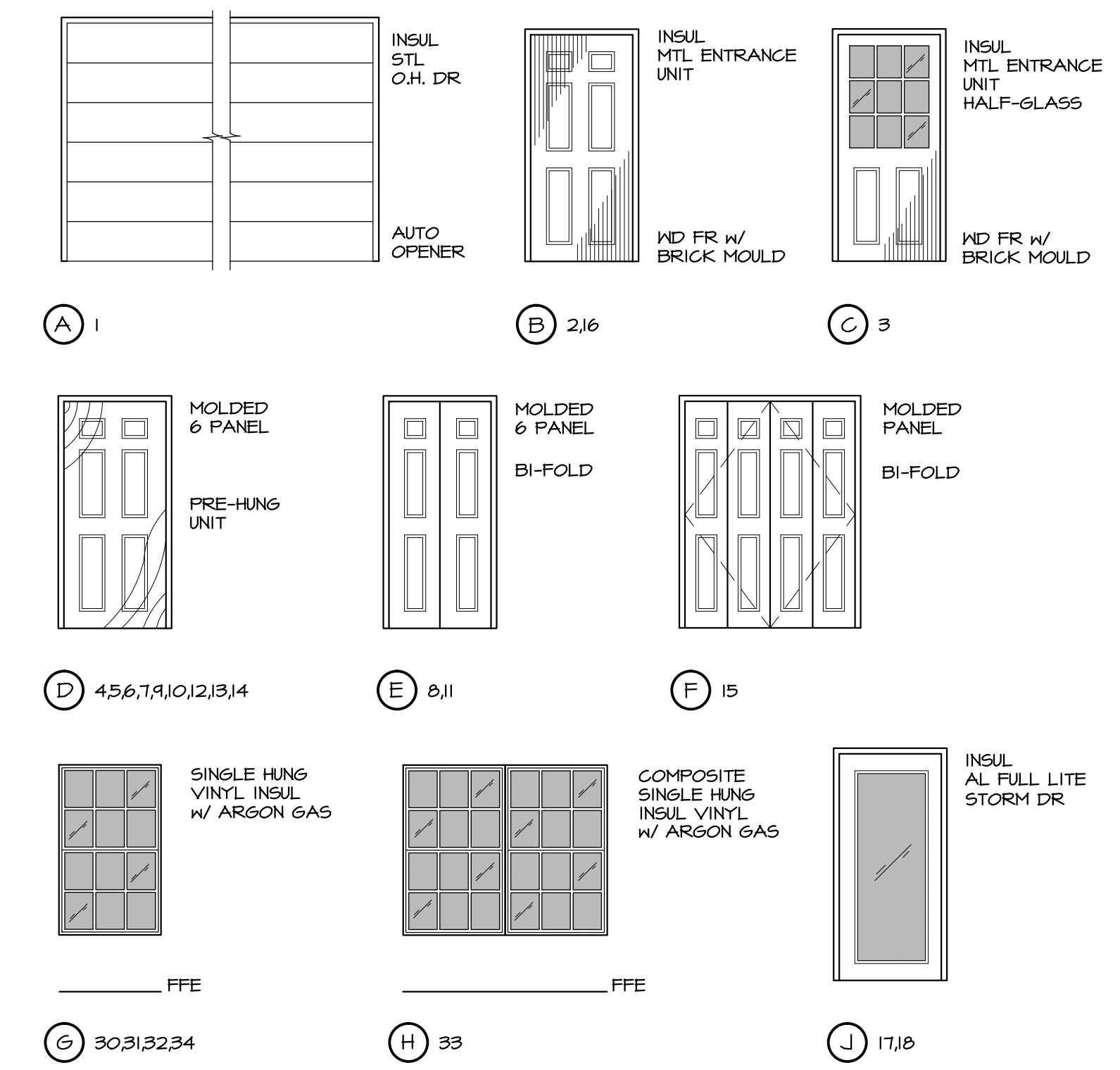


ASSIGNED
SEE SITE PLAN



1 TYP WDM HEAD & SILL DETAIL
A2 3"

OPENING ELEVATIONS SCALE: 1/4"=1'-0"



GENERAL NOTES FLOOR PLAN

MARK	DESCRIPTION
1	SEE SITE PLAN FOR UNIT LOCATION
2	1/2" H MAX MTL THRESHOLD - ADA CERTIFIED
3	LINE OF FLOOR TYPE CHANGE - SEE INTERIOR FINISH SCHEDULE
4	BASE AND/OR WALL CABINET LOC - SEE MILLWORK FOR DETAIL
5	PANTRY / LINEN SHELVING - SEE MILLWORK FOR DETAIL
6	ROD & SHELF @ CLOSET - SEE MILLWORK FOR DETAIL
7	VANITY & MIRROR LOC - SEE MILLWORK FOR DETAIL
8	22"x30" ATTIC ACCESS - SEE FRAMING PLAN FOR LOC & DETAIL
9	LINE OF MASONRY FINISH - SEE EXTERIOR ELEVATIONS
10	LINE OF ROOF OVERHANG - SEE EXTERIOR ELEVATIONS
11	4"TK CONC STOOP AND/OR PORCH LOC - SEE FOUNDATION PLAN
12	CONC DRIVE - SEE SITE PLAN FOR DETAIL
13	(N/A THIS PLAN)
14	4"Ø MTL DRYER DUCT W/ PRE-MFG VENT & DAMPER THRU WALL
15	APPLIANCE - ELEC RANGE LOC - SEE ALLOWANCES
16	APPLIANCE - OVER THE RANGE MICROWAVE & HOOD-VENTED - SEE ALLOWANCES
17	APPLIANCE - REFRIGERATOR W/ FREEZER LOC - SEE ALLOWANCES
18	APPLIANCE - DISHWASHER LOC - SEE ALLOWANCES
19	APPLIANCE - DISPOSAL LOC - SEE ALLOWANCES
20	APPLIANCE - WASHER & DRYER LOC - FURN & INSTALLED BY FUTURE TENANT
21	WATER HEATER & DRAIN PAN - SEE PLUMBING PLAN
22	AIR HANDLER & COIL ON PLATFORM - SEE HVAC PLAN
23	HVAC HEAT PUMP ON 4"TK CONC PAD - SEE HVAC PLAN
24	ELEC PANEL LOC - SEE ELEC POWER PLAN
25	ELEC METER & MAIN BREAKER LOC - SEE ELEC POWER PLAN
26	TELEPHONE ENTRANCE LOC IN PRE-MFG BOX - SEE ELEC POWER PLAN
27	CABLE TV ENTRANCE LOC IN PRE-MFG BOX - SEE ELEC POWER PLAN

INTERIOR FINISH SCHEDULE

SPACE	FLOOR	BASE	HALLS	CEILING	CLG HT	REMARKS
2 AUTO GARAGE	CARPET			1/2" GYP BD (1)	8'-0"	
LIVING ROOM	CERAMIC TILE			1/2" GYP BD (1)	8'-0"	
KITCHEN	EXPOSED CONC-SEALED			1/2" GYP BD (1)	8'-0"	
LAUNDRY		MOOD		1/2" GYP BD (1)	8'-0"	
MASTER BEDROOM		MOOD W/ SHOE		1/2" GYP BD (1)	8'-0"	
BEDROOM 2				1/2" GYP BD (1)	8'-0"	
BEDROOM 3				1/2" GYP BD (1)	8'-0"	
MASTER BATH				1/2" GYP BD (1)	8'-0"	
BATH 2				1/2" GYP BD (1)	8'-0"	
HALLWAY				1/2" GYP BD (1)	8'-0"	
CLOSET(S)				1/2" GYP BD (1)	8'-0"	
LINEN				1/2" GYP BD (1)	8'-0"	

(1) ALL CEILINGS TO HAVE SPRAYED & "KNOCKED DOWN" FINISH - PAINTED
(2) 1/2" GYP BD TYPE "WR" ALL NET WALL LOCATIONS

OPENING SCHEDULE

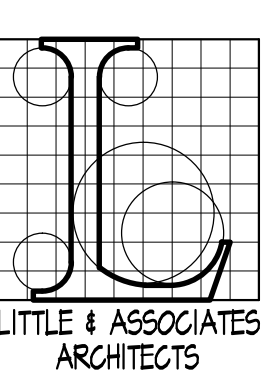
MARK	DOORS			REMARKS		
	W	H	T	MAT	TYPE	
1	16'-0"	7'-0"		STL	A	(1) KEYPAD & (2) REMOTES
2	3'-0"	6'-8"		MTL	B	
3	3'-0"	6'-8"		MTL	C	
4	2'-6"	6'-8"		WD	D	
5	3'-0"	6'-8"		WD	D	
6	2'-8"	6'-8"		WD	D	
7	3'-0"	6'-8"		WD	D	
8	3'-0"	6'-8"		WD	E	
9	2'-0"	6'-8"		WD	D	
10	3'-0"	6'-8"		WD	D	
11	3'-0"	6'-8"		WD	E	
12	3'-0"	6'-8"		WD	D	
13	2'-6"	6'-8"		WD	D	
14	2'-6"	6'-8"		WD	D	
15	5'-0"	6'-8"		WD	F	PAIR OF BI-FOLD DOORS
16	3'-0"	6'-8"		MTL	B	
17	3'-0"	6'-8"		MTL	J	
18	3'-0"	6'-8"		MTL	J	
19	3'-0"	6'-8"		WD		CASED OPENING

MARK	WINDOWS		REMARKS
	W	H	
30	3'-0"	5'-0"	VINYL 6
31	3'-0"	5'-0"	VINYL 6
32	3'-0"	5'-0"	VINYL 6
33	6'-0"	5'-0"	VINYL H COMPOSITE WINDOW
34	3'-0"	5'-0"	VINYL 6

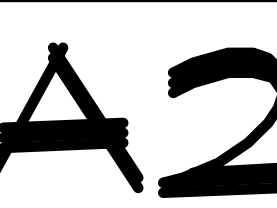
FLOOR PLAN / SCHEDULES
HOME "A"

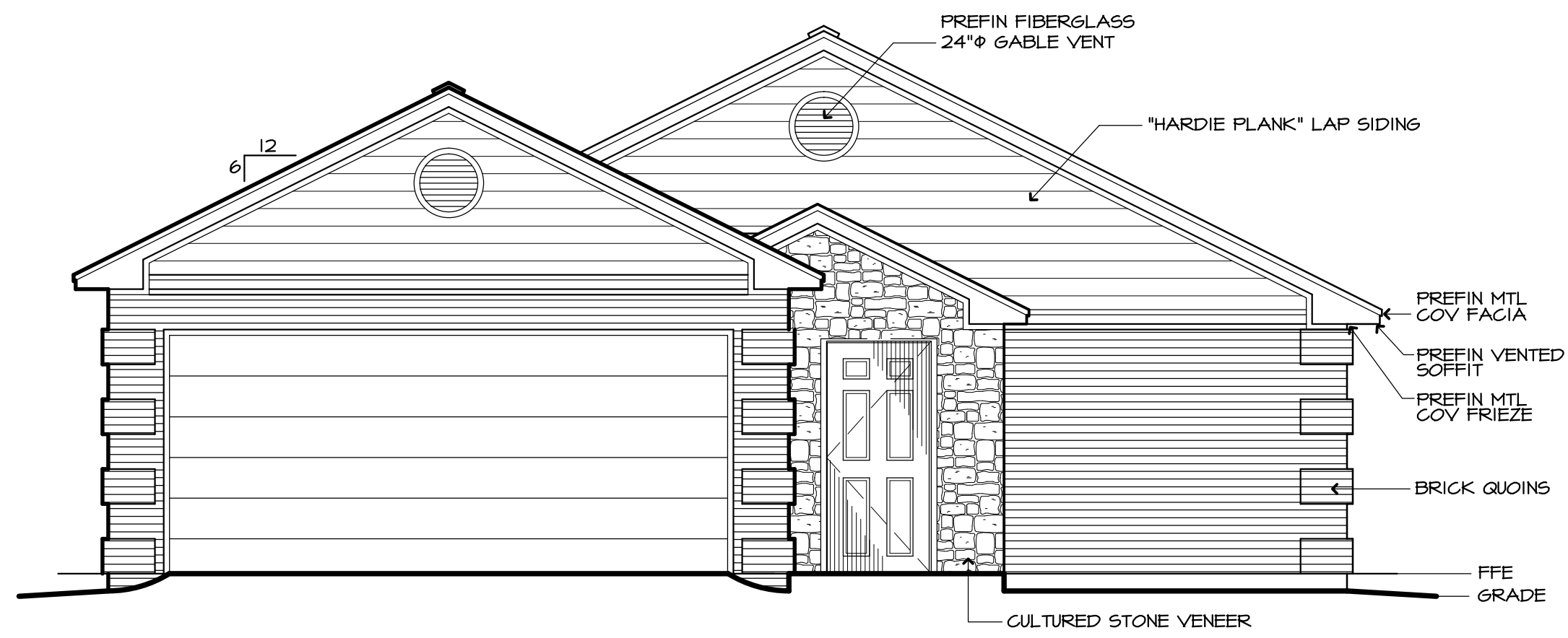
NEW DEVELOPMENT FOR:
HUFF Subdivision
SOUTHWEST DRIVE & KELLERS CHANNEL
JONESBORO, AR 72404

COMM. NO.: 54112
DATE: 12/04/12
FILE:

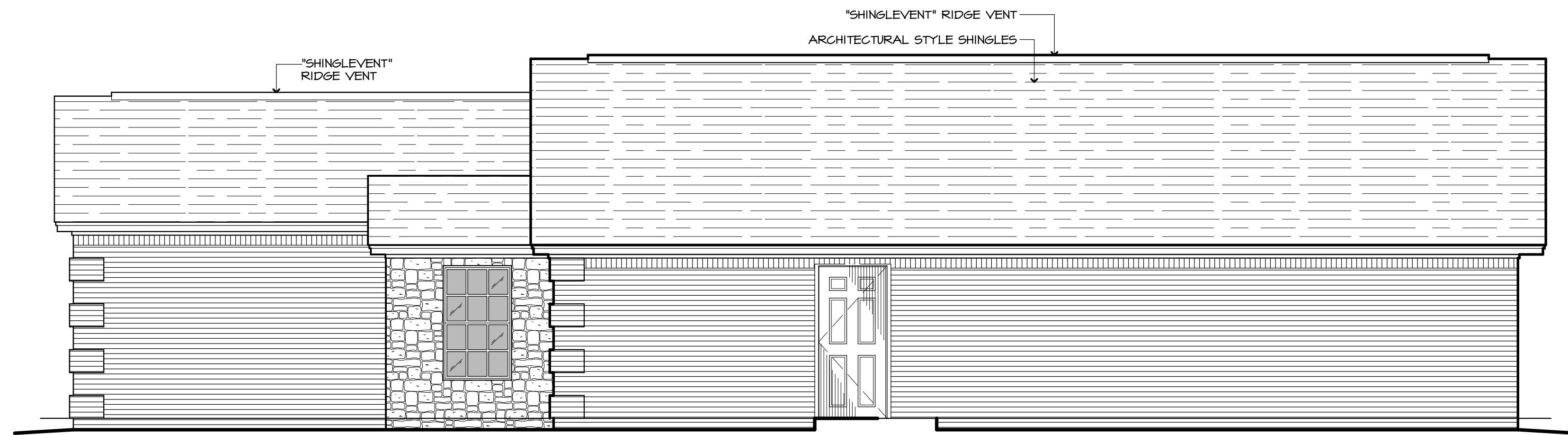


501 UNION
JONESBORO, AR
(870) 430-3813 TEL
(870) 430-3820 FAX
littlearchitectsglobal.net

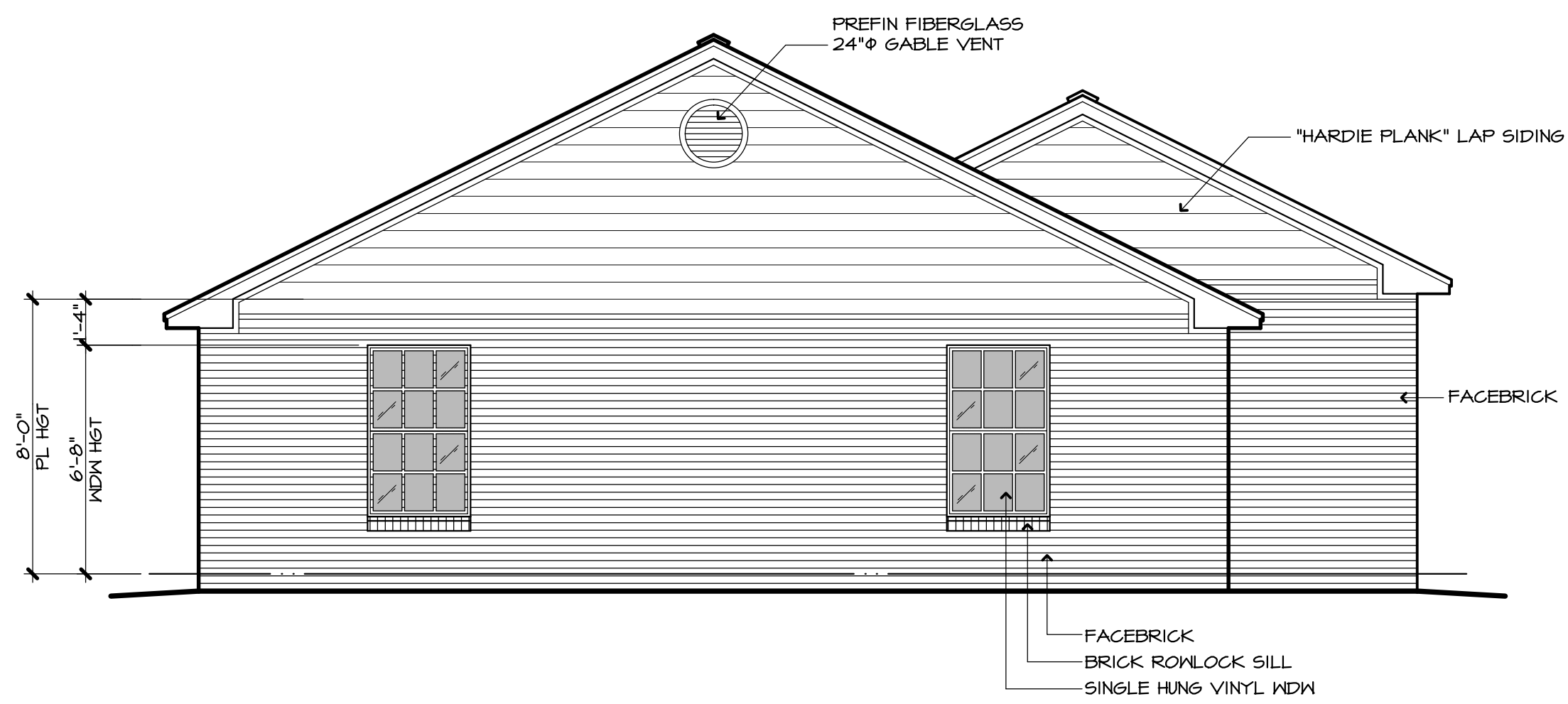




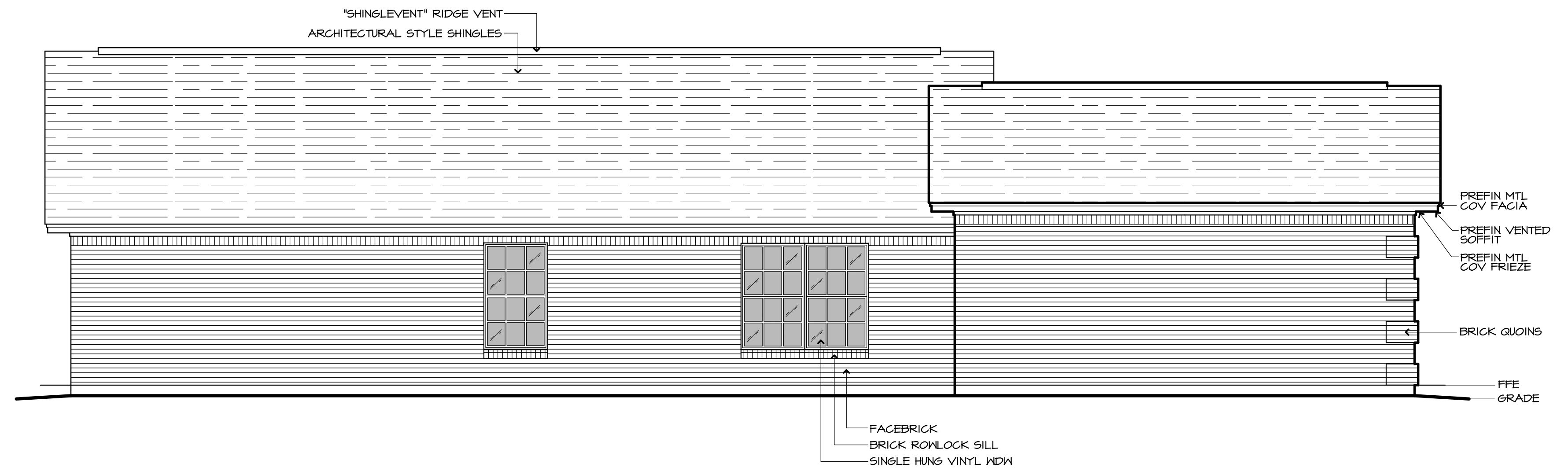
FRONT ELEVATION "A"
1/4"



RIGHT ELEVATION "A"
1/4"



REAR ELEVATION "A"
1/4"

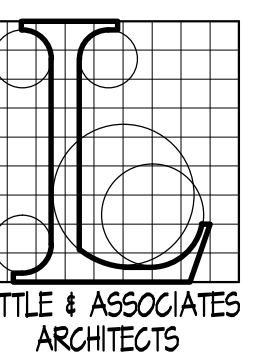


LEFT ELEVATION "A"
1/4"

EXTERIOR ELEVATIONS
HOME "A"

NEW DEVELOPMENT FOR
HUFF Subdivision
SOUTHWEST DRIVE & HELLERS CHAPEL
JONESBORO, AR 72404

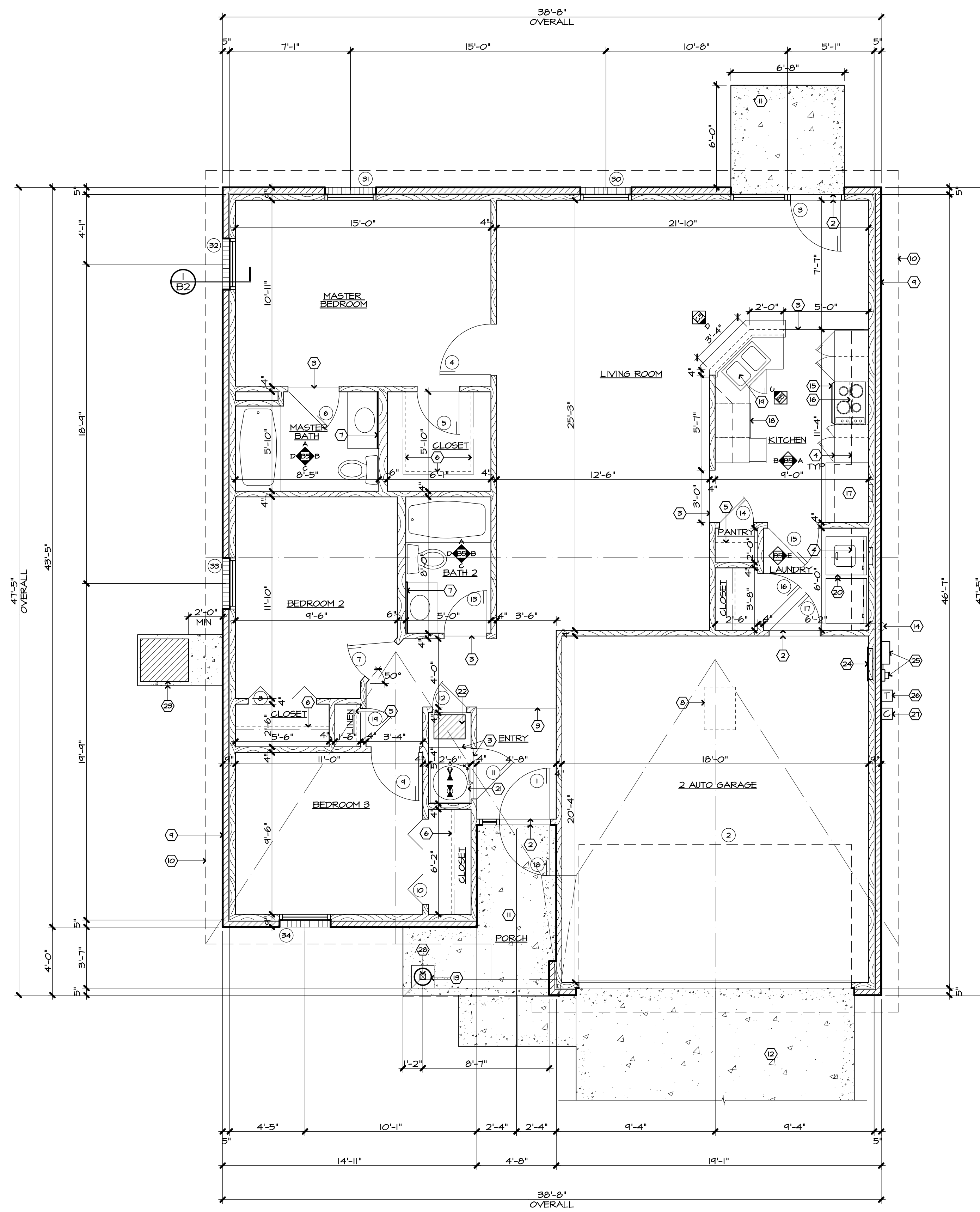
COMM. NO.: 54112
DATE: 12/04/12
FILE:



LITTLE & ASSOCIATES
ARCHITECTS

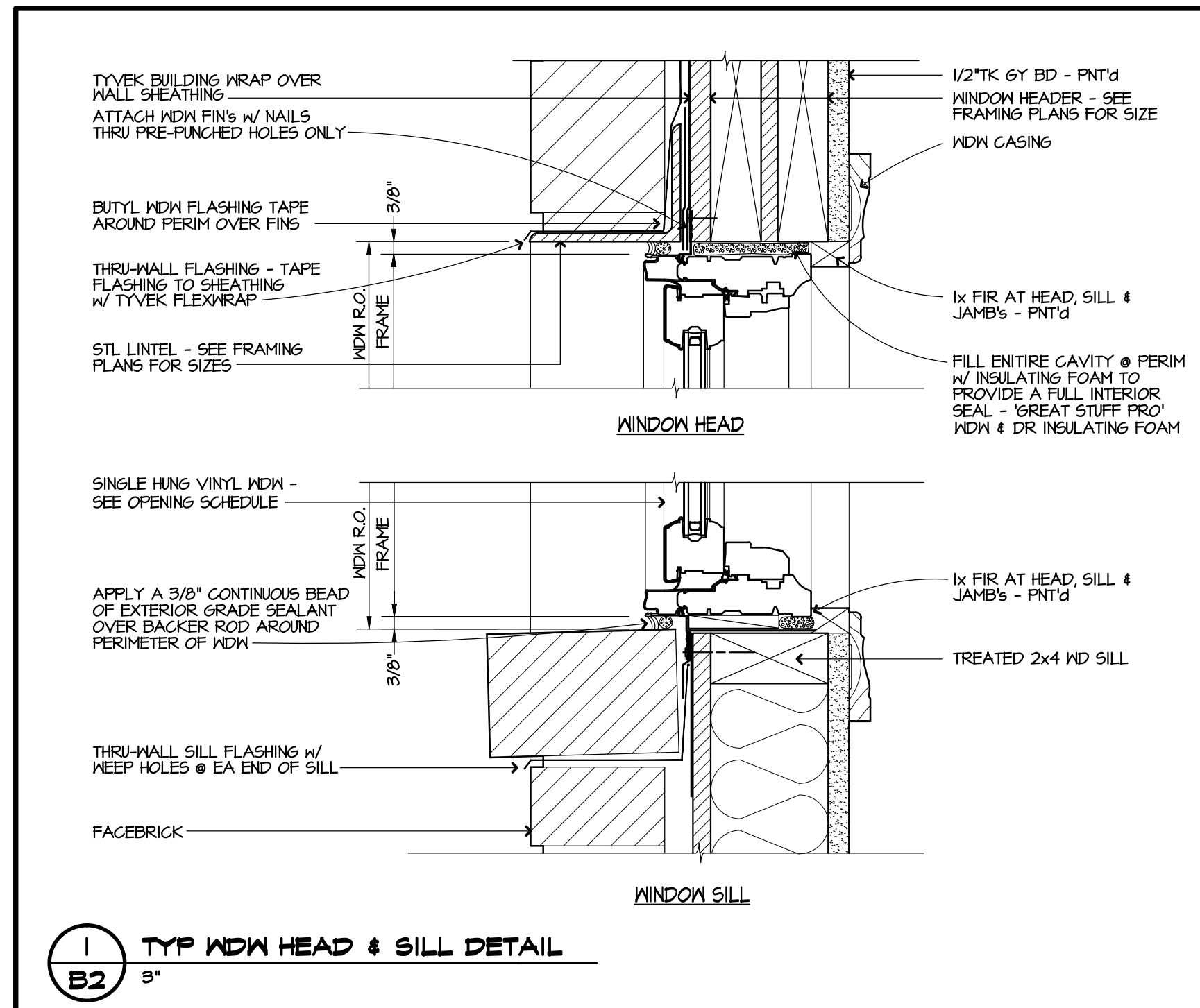
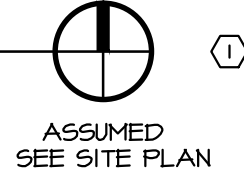
501 UNION
JONESBORO, AR
(870) 430-3813 TEL
(870) 430-3820 FAX
littlearch@bcglobal.net

A3

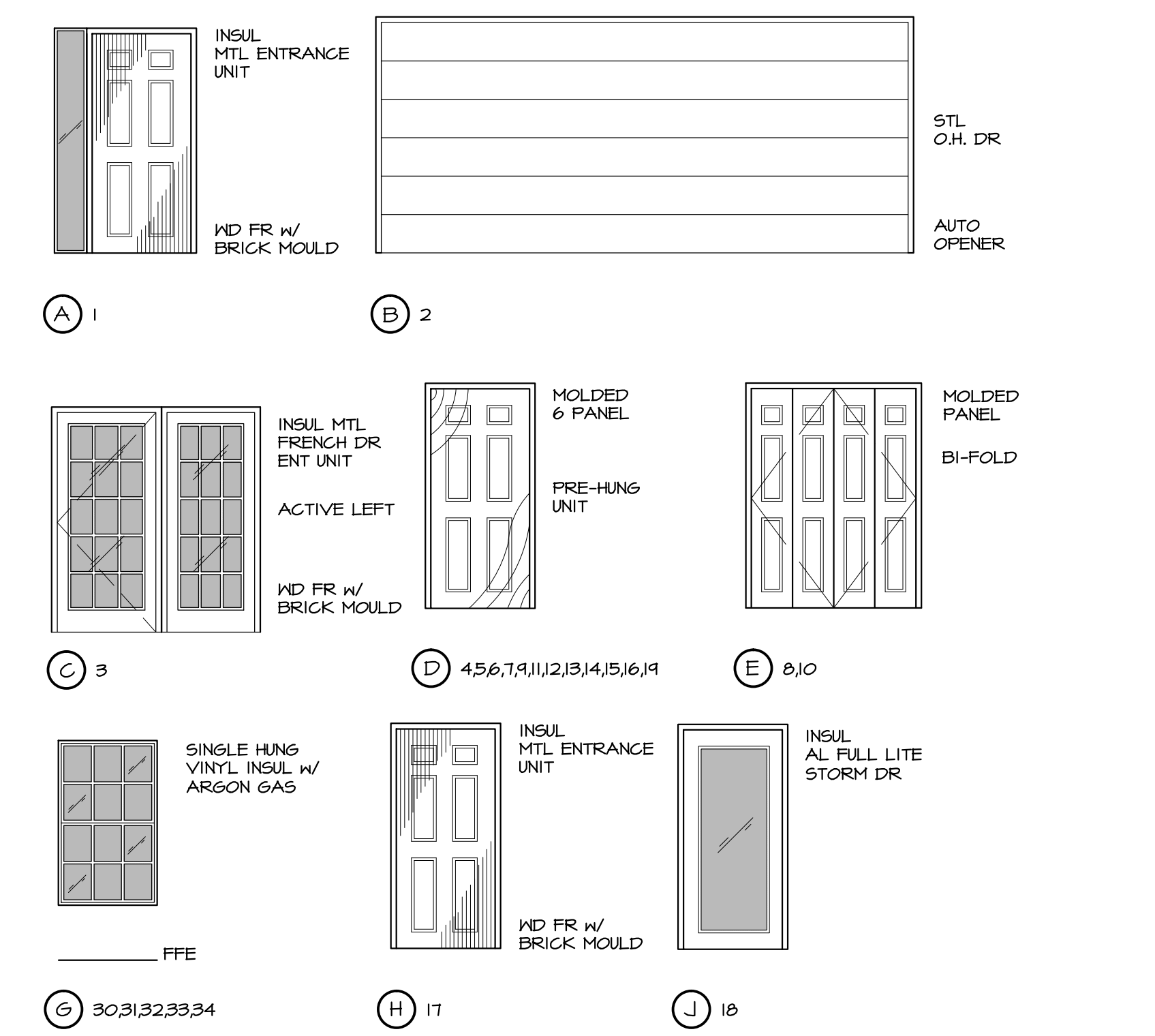


FLOOR PLAN "B"
1/4"

SQUARE FOOTAGE CALCULATIONS:
LIVING SPACE (H/C) 1,278 SQ.FT.
GARAGE & PORCH (NON H/C) 434 SQ.FT.
TOTAL AREA: 1,711 SQ.FT.



OPENING ELEVATIONS



GENERAL NOTES FLOOR PLAN

- 1 SEE SITE PLAN FOR UNIT LOCATION
- 2 1/2" H MAX MTL THRESHOLD - ADA CERTIFIED
- 3 LINE OF FLOOR TYPE CHANGE - SEE INT FINISH SCHEDULE
- 4 BASE AND/OR WALL CABINET LOC - SEE MILLWORK FOR DETAIL
- 5 PANTRY / LINEN SHELVING - SEE MILLWORK FOR DETAIL
- 6 ROD & SHELF @ CLOSET - SEE MILLWORK FOR DETAIL
- 7 VANITY & MIRROR LOC - SEE MILLWORK FOR DETAIL
- 8 22"x30" ATTIC ACCESS - SEE FRAMING PLAN FOR LOC & DETAIL
- 9 LINE OF MASONRY FINISH - SEE EXTERIOR ELEVATIONS
- 10 LINE OF ROOF OVERHANG - SEE EXTERIOR ELEVATIONS
- 11 4"TK CONG STOOP AND/OR PORCH LOC - SEE FOUNDATION PLAN
- 12 CONG DRIVE - SEE SITE PLAN FOR DETAIL
- 13 12"Ø DECORATIVE AL COLUMN W/ TUSCAN CAP & BASE
- 14 4"Ø MTL DRYER DUCT W/ PRE-MFG VENT & DAMPER THRU WALL
- 15 APPLIANCE - ELEC RANGE LOC - SEE ALLOWANCES
- 16 APPLIANCE - OVER THE RANGE MICROWAVE & HOOD-VENTED - SEE ALLOWANCES
- 17 APPLIANCE - REFRIGERATOR W/ FREEZER LOC - SEE ALLOWANCES
- 18 APPLIANCE - DISHWASHER LOC - SEE ALLOWANCES
- 19 APPLIANCE - DISPOSAL LOC - SEE ALLOWANCES
- 20 APPLIANCE - WASHER & DRYER LOC - FURN & INSTALLED BY FUTURE TENANT
- 21 WATER HEATER & DRAIN PAN - SEE PLUMBING PLAN
- 22 AIR HANDLER & COIL ON PLATFORM - SEE HVAC PLAN
- 23 HVAC HEAT PUMP ON 4"TK CONG PAD - SEE HVAC PLAN
- 24 ELEC PANEL LOC - SEE ELEC POWER PLAN
- 25 ELEC METER & MAIN BREAKER LOC - SEE ELEC POWER PLAN
- 26 TELEPHONE ENTRANCE LOC IN PRE-MFG BOX - SEE ELEC POWER PLAN
- 27 CABLE TV ENTRANCE LOC IN PRE-MFG BOX - SEE ELEC POWER PLAN
- 28 STRUCTURAL COL - SEE FRAMING PLAN

INTERIOR FINISH SCHEDULE

SPACE	FLOOR	BASE	HALLS	CEILING	CLG HT	REMARKS
	CARPET					
	CERAMIC TILE					
	EXPOSED CONG-SEALED					
		WOOD				
		WOOD W/ SHOE				
			1/2" GYP BD			
			1/2" GYP BD TYPE "WR"			
				1/2" GYP BD (1)		
				1/2" GYP BD TYP "WR" (1)		
2 AUTO GARAGE						
LIVING ROOM						
KITCHEN						
LAUNDRY						
MASTER BEDROOM						
BEDROOM 2						
BEDROOM 3						
MASTER BATH						
BATH 2						
CLOSET						
LINEN						
ENTRY						

(1) ALL CEILINGS TO HAVE SPRAYED & "KNOCKED DOWN" FINISH - PAINTED
(2) 1/2" GYP BD TYPE "WR" ALL WET WALL LOCATIONS

OPENING SCHEDULE

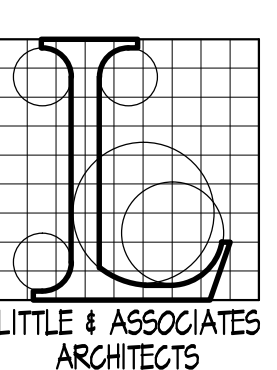
MARK	DOORS					REMARKS
	W	H	T	MAT	TYPE	
1	3'-0"	6'-8"		MTL	A	
2	16'-0"	7'-0"		STL	B	(1) KEYPAD & (2) REMOTES
3	6'-0"	6'-8"		MTL	C	
4	3'-0"	6'-8"		WD	D	
5	2'-6"	6'-8"		WD	D	
6	3'-0"	6'-8"		WD	D	
7	2'-8"	6'-8"		WD	D	
8	4'-0"	6'-8"		WD	E	PAIR OF BI-FOLD DOORS
9	2'-8"	6'-8"		WD	D	
10	5'-0"	6'-8"		WD	E	PAIR OF BI-FOLD DOORS
11	3'-0"	6'-8"		WD	D	
12	2'-0"	6'-8"		WD	D	
13	2'-6"	6'-8"		WD	D	
14	2'-0"	6'-8"		WD	D	
15	3'-0"	6'-8"		WD	D	
16	3'-0"	6'-8"		WD	D	
17	3'-0"	6'-8"		MTL	H	
18	3'-0"	6'-8"		MTL	J	
19	2'-0"	6'-8"		WD	D	

WINDOWS					
30	3'-0"	5'-0"		VINYL	6
31	3'-0"	5'-0"		VINYL	6
32	3'-0"	5'-0"		VINYL	6
33	3'-0"	5'-0"		VINYL	6
34	3'-0"	5'-0"		VINYL	6

FLOOR PLAN / SCHEDULES
HOME "B"

NEW DEVELOPMENT FOR:
HUFF Subdivision
SOUTHWEST DRIVE & KELLERS CANAL
JONESBORO, AR 72404

CONTRACT NO. 54112
DATE: 12/04/12



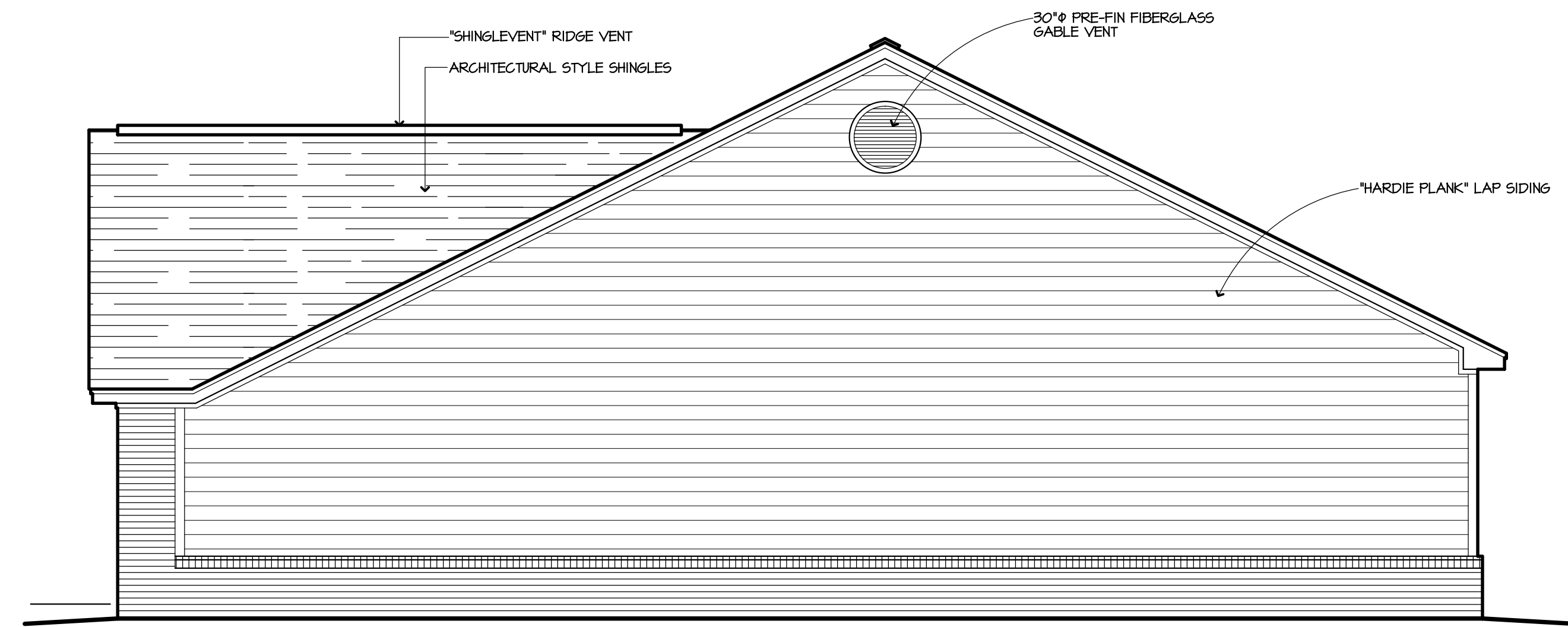
501 UNION
JONESBORO, AR
(870) 430-3813 TEL
(870) 430-3820 FAX
littlearch@earthlink.net

B2



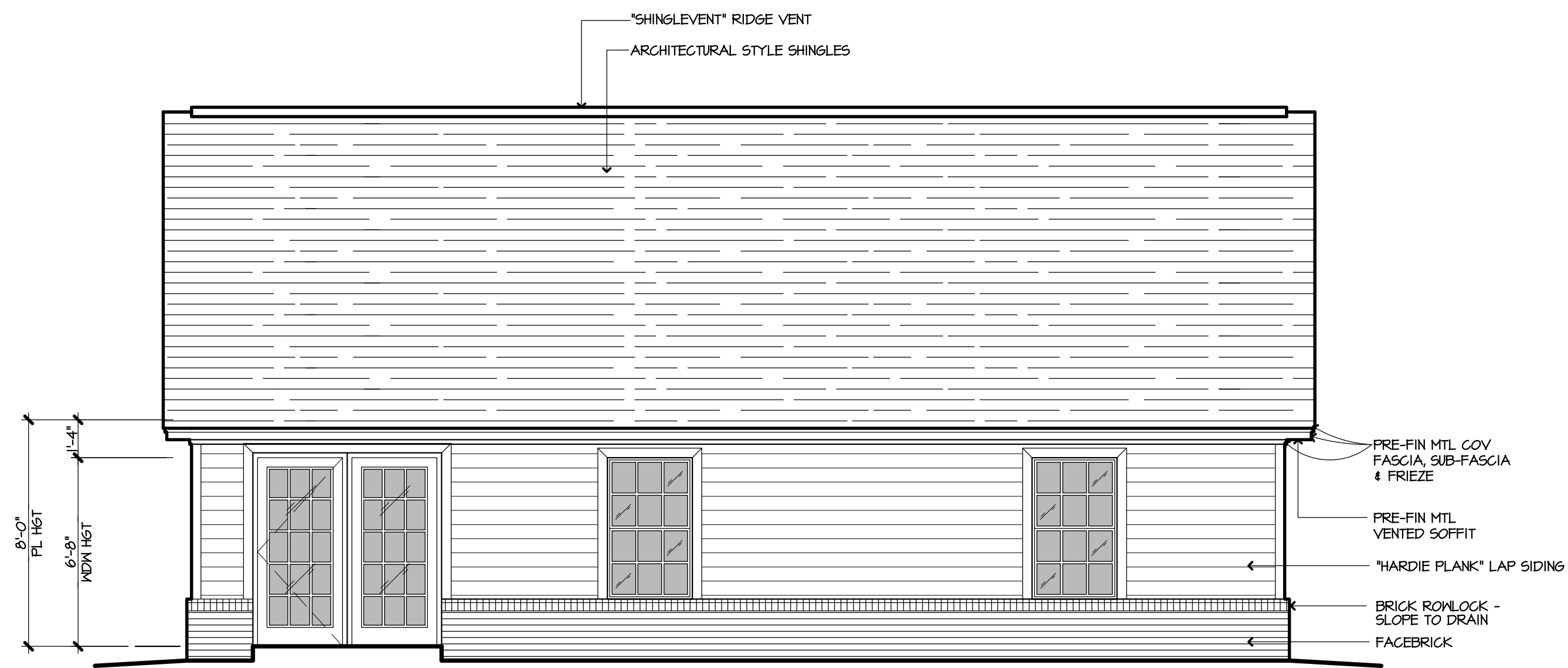
FRONT ELEVATION "B"

1/4"



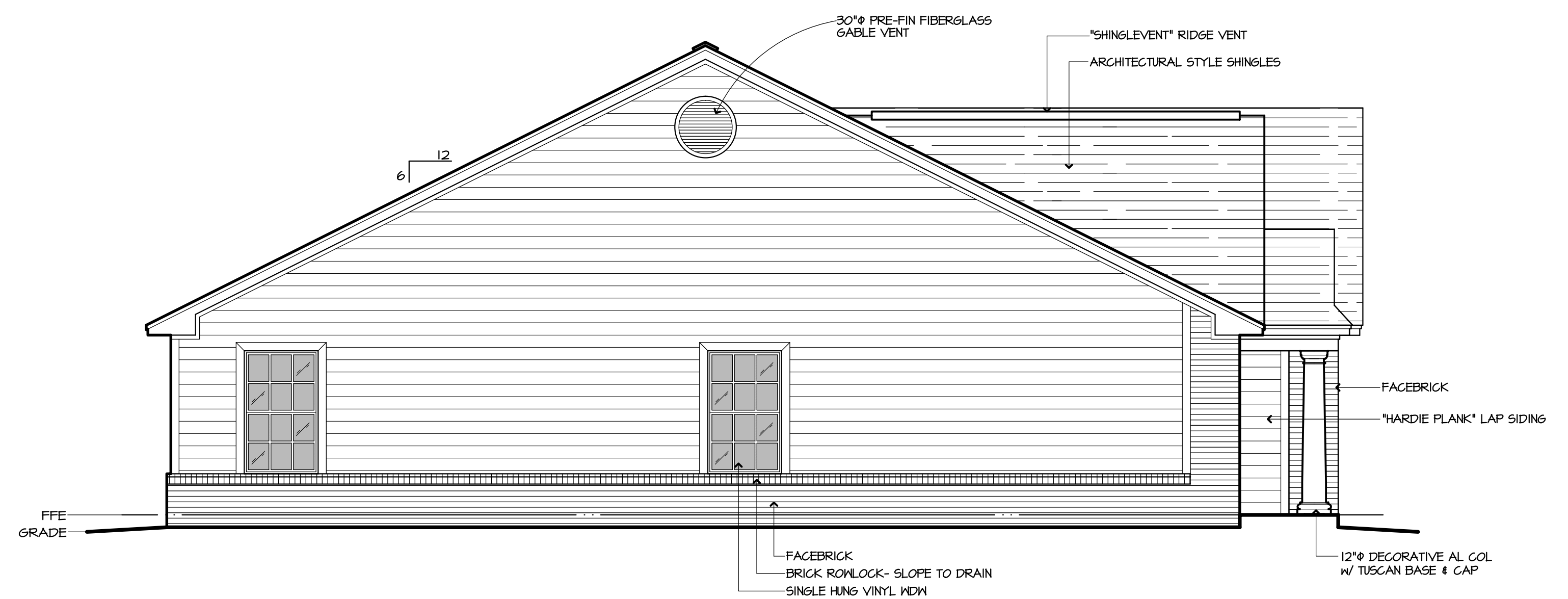
RIGHT ELEVATION "B"

1/4"



REAR ELEVATION "B"

1/4"



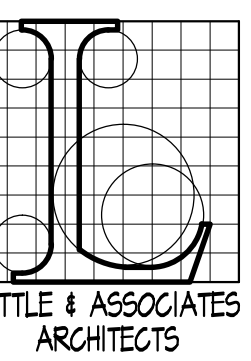
LEFT ELEVATION "B"

1/4"

EXTERIOR ELEVATIONS
HOME "B"

NEW DEVELOPMENT FOR
HUFF Subdivision
SOUTHWEST DRIVE & HELLERS CHAPEL
JONESBORO, AR 72404

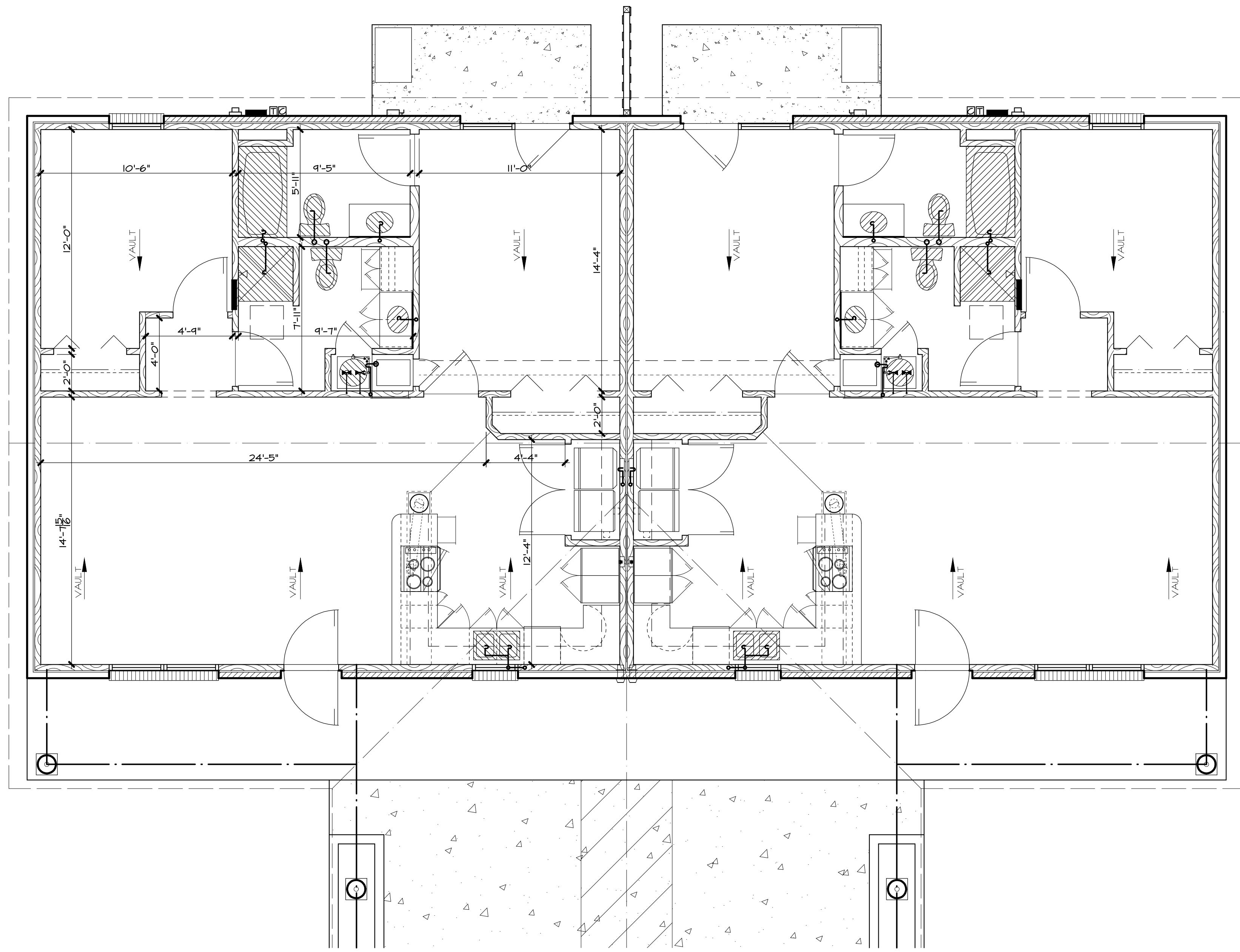
COMM. NO.: 54112
DATE: 12/04/12
FILE:



LITTLE & ASSOCIATES
ARCHITECTS

501 UNION
JONESBORO, AR
(870) 430-3813 TEL
(870) 430-3820 FAX
littlearch@bcglobal.net

B3

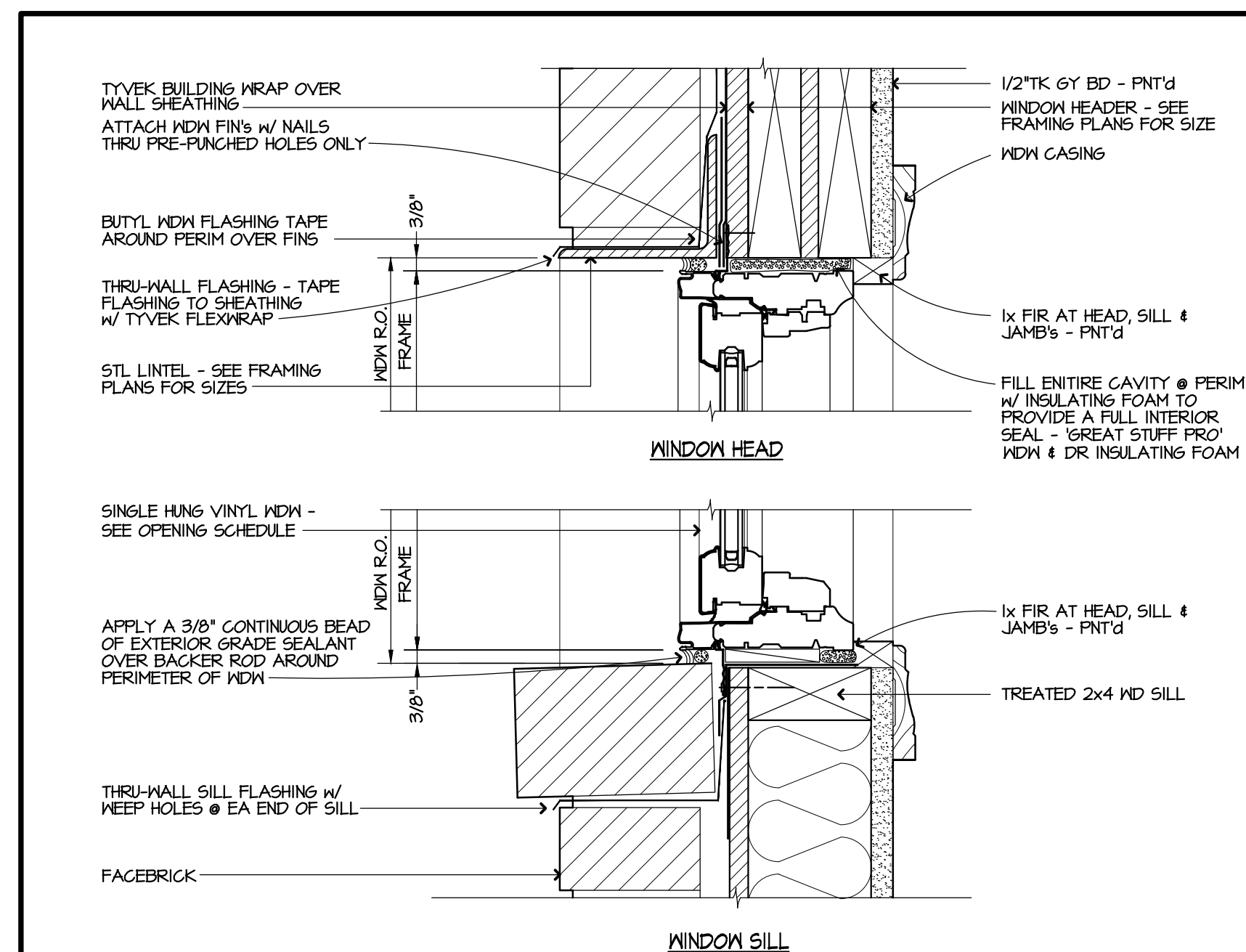


FLOOR PLAN "C"
1/4"

SQUARE FOOTAGE CALCULATIONS:

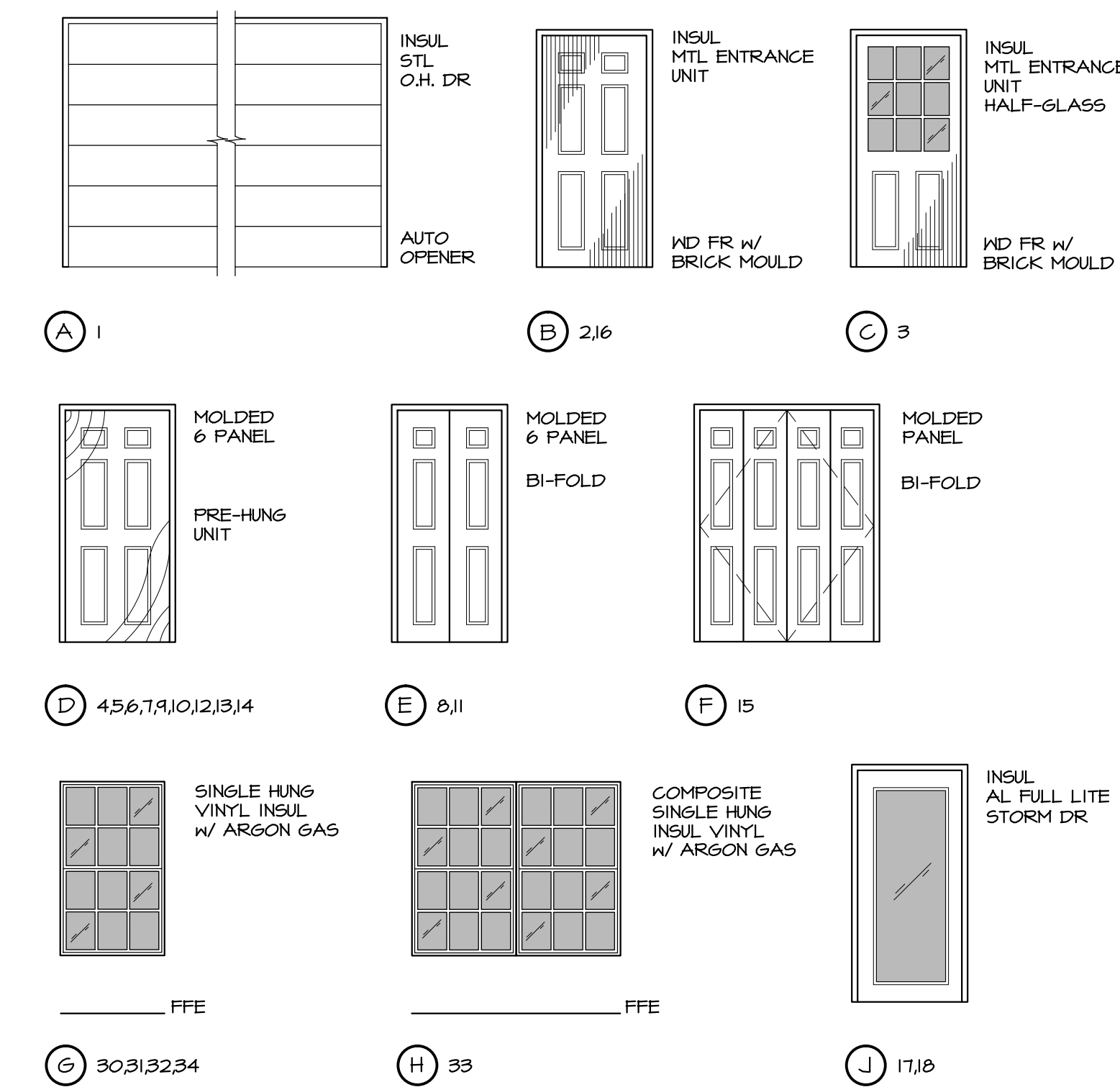
LIVING SPACE (H/C) 431.3 SQ.FT.
GARAGE & PORCH (NON H/C) 33.5 SQ.FT.
TOTAL AREA 464.8 SQ.FT.

ASSIGNED
SEE SITE PLAN



1 TYP WDN HEAD & SILL DETAIL
A2 3"

OPENING ELEVATIONS SCALE: 1/4"=1'-0"



GENERAL NOTES FLOOR PLAN

- 1 SEE SITE PLAN FOR UNIT LOCATION
- 2 1/2" H MAX MTL THRESHOLD - ADA CERTIFIED
- 3 LINE OF FLOOR TYPE CHANGE - SEE INTERIOR FINISH SCHEDULE
- 4 BASE AND/OR WALL CABINET LOC - SEE MILLWORK FOR DETAIL
- 5 PANTRY / LINEN SHELVING - SEE MILLWORK FOR DETAIL
- 6 ROD & SHELF @ CLOSET - SEE MILLWORK FOR DETAIL
- 7 VANITY & MIRROR LOC - SEE MILLWORK FOR DETAIL
- 8 22"x30" ATTIC ACCESS - SEE FRAMING PLAN FOR LOC & DETAIL
- 9 LINE OF MASONRY FINISH - SEE EXTERIOR ELEVATIONS
- 10 LINE OF ROOF OVERHANG - SEE EXTERIOR ELEVATIONS
- 11 4"TK CONG STOOP AND/OR PORCH LOC - SEE FOUNDATION PLAN
- 12 CONG DRIVE - SEE SITE PLAN FOR DETAIL
- 13 (N/A THIS PLAN)
- 14 4"Ø MTL DRYER DUCT W/ PRE-MFG VENT & DAMPER THRU WALL
- 15 APPLIANCE - ELEC RANGE LOC - SEE ALLOWANCES
- 16 APPLIANCE - OVER THE RANGE MICROWAVE & HOOD-VENTED - SEE ALLOWANCES
- 17 APPLIANCE - REFRIGERATOR W/ FREEZER LOC - SEE ALLOWANCES
- 18 APPLIANCE - DISHWASHER LOC - SEE ALLOWANCES
- 19 APPLIANCE - DISPOSAL LOC - SEE ALLOWANCES
- 20 APPLIANCE - WASHER & DRYER LOC - FURN & INSTALLED BY FUTURE TENANT
- 21 WATER HEATER & DRAIN PAN - SEE PLUMBING PLAN
- 22 AIR HANDLER & COIL ON PLATFORM - SEE HVAC PLAN
- 23 HVAC HEAT PUMP ON 4"TK CONG PAD - SEE HVAC PLAN
- 24 ELEC PANEL LOC - SEE ELEC POWER PLAN
- 25 ELEC METER & MAIN BREAKER LOC - SEE ELEC POWER PLAN
- 26 TELEPHONE ENTRANCE LOC IN PRE-MFG BOX - SEE ELEC POWER PLAN
- 27 CABLE TV ENTRANCE LOC IN PRE-MFG BOX - SEE ELEC POWER PLAN

INTERIOR FINISH SCHEDULE

SPACE	FLOOR	BASE	HALLS	CEILING	CLG HT	REMARKS
	CARPET					
	CERAMIC TILE					
	EXPOSED CONG-SEALED					
		MOOD				
		MOOD W/ SHOE				
			1/2" GYP BD			
			1/2" GYP BD TYPE "MR" (2)			
				1/2" GYP BD (1)		
				1/2" GYP BD TYP "MR" (1)		
					8'-0"	
2 AUTO GARAGE						
LIVING ROOM						
KITCHEN						
LAUNDRY						
MASTER BEDROOM						
BEDROOM 2						
BEDROOM 3						
MASTER BATH						
BATH 2						
HALLWAY						
CLOSET(S)						
LINEN						

(1) ALL CEILING TO HAVE SPRAYED & "KNOCKED DOWN" FINISH - PAINTED

(2) 1/2" GYP BD TYPE "MR" ALL NET WALL LOCATIONS

OPENING SCHEDULE

MARK	DOORS			REMARKS		
	W	H	T	MAT	TYPE	
1	16'-0"	7'-0"		STL	A	(1) KEYPAD & (2) REMOTES
2	3'-0"	6'-8"		MTL	B	
3	3'-0"	6'-8"		MTL	C	
4	2'-6"	6'-8"		WD	D	
5	3'-0"	6'-8"		WD	D	
6	2'-8"	6'-8"		WD	D	
7	3'-0"	6'-8"		WD	D	
8	3'-0"	6'-8"		WD	E	
9	2'-0"	6'-8"		WD	D	
10	3'-0"	6'-8"		WD	D	
11	3'-0"	6'-8"		WD	E	
12	3'-0"	6'-8"		WD	D	
13	2'-6"	6'-8"		WD	D	
14	2'-6"	6'-8"		WD	D	
15	5'-0"	6'-8"		WD	F	PAIR OF BI-FOLD DOORS
16	3'-0"	6'-8"		MTL	B	
17	3'-0"	6'-8"		MTL	J	
18	3'-0"	6'-8"		MTL	J	
19	3'-0"	6'-8"		WD		CASED OPENING

MARK	W	H	T	MAT	TYPE	REMARKS
30	3'-0"	5'-0"		VINYL	G	
31	3'-0"	5'-0"		VINYL	G	
32	3'-0"	5'-0"		VINYL	G	
33	6'-0"	5'-0"		VINYL	H	COMPOSITE WINDOW
34	3'-0"	5'-0"		VINYL	G	

FLOOR PLAN / SCHEDULES
HOME "C"

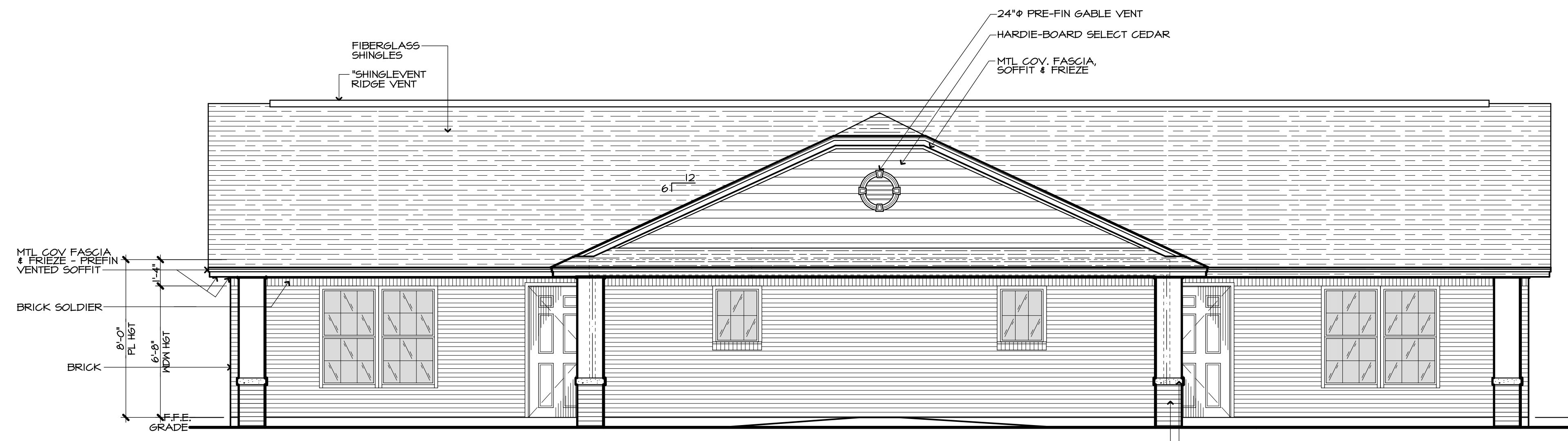
NEW DEVELOPMENT FOR
HUFF Subdivision
SOUTHWEST DRIVE & KELLERS CHAPEL
JONESBORO, AR 72404

COMM. NO. 54112
DATE: 12/04/12
FILE:

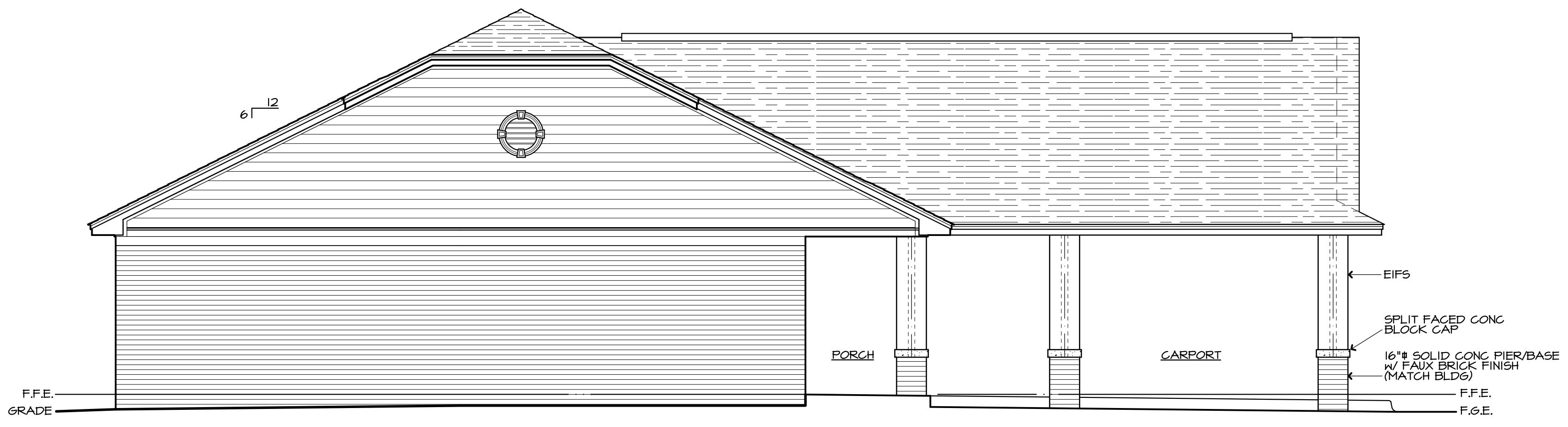
LITTLE & ASSOCIATES
ARCHITECTS

501 UNION
JONESBORO, AR
(870) 430-3813 TEL
(870) 430-3820 FAX
littlearch@globalnet

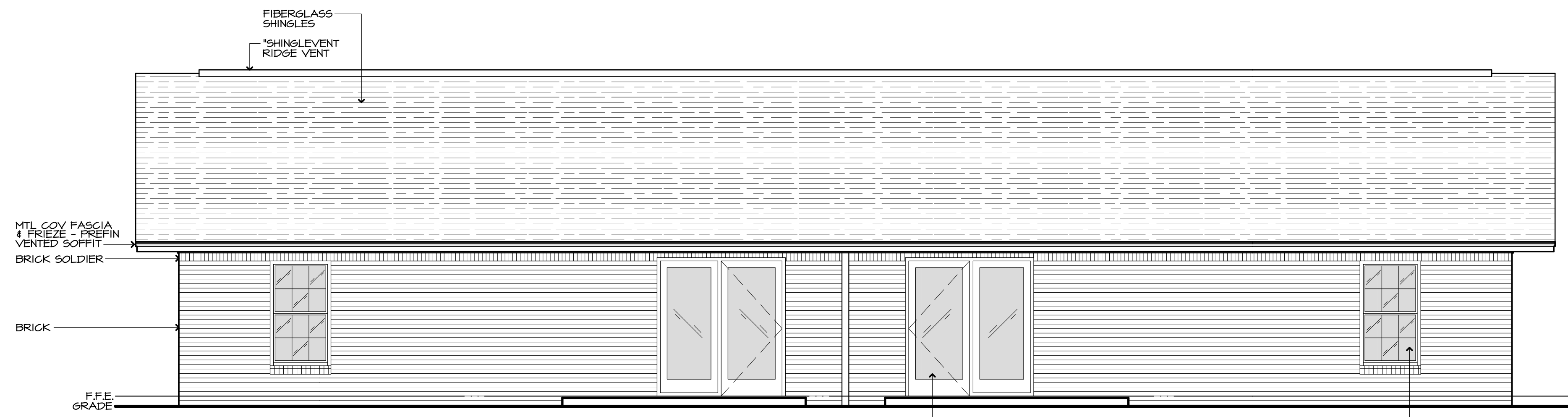
C2



FRONT ELEVATION - BUILDING "C"
1/4"



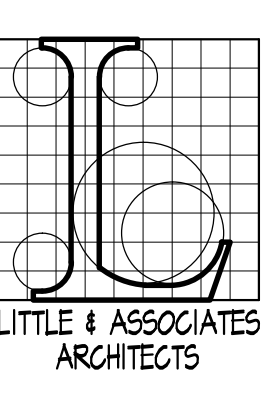
SIDE ELEVATION - BUILDING "C"
1/4"



REAR ELEVATION - BUILDING "C"
1/4"

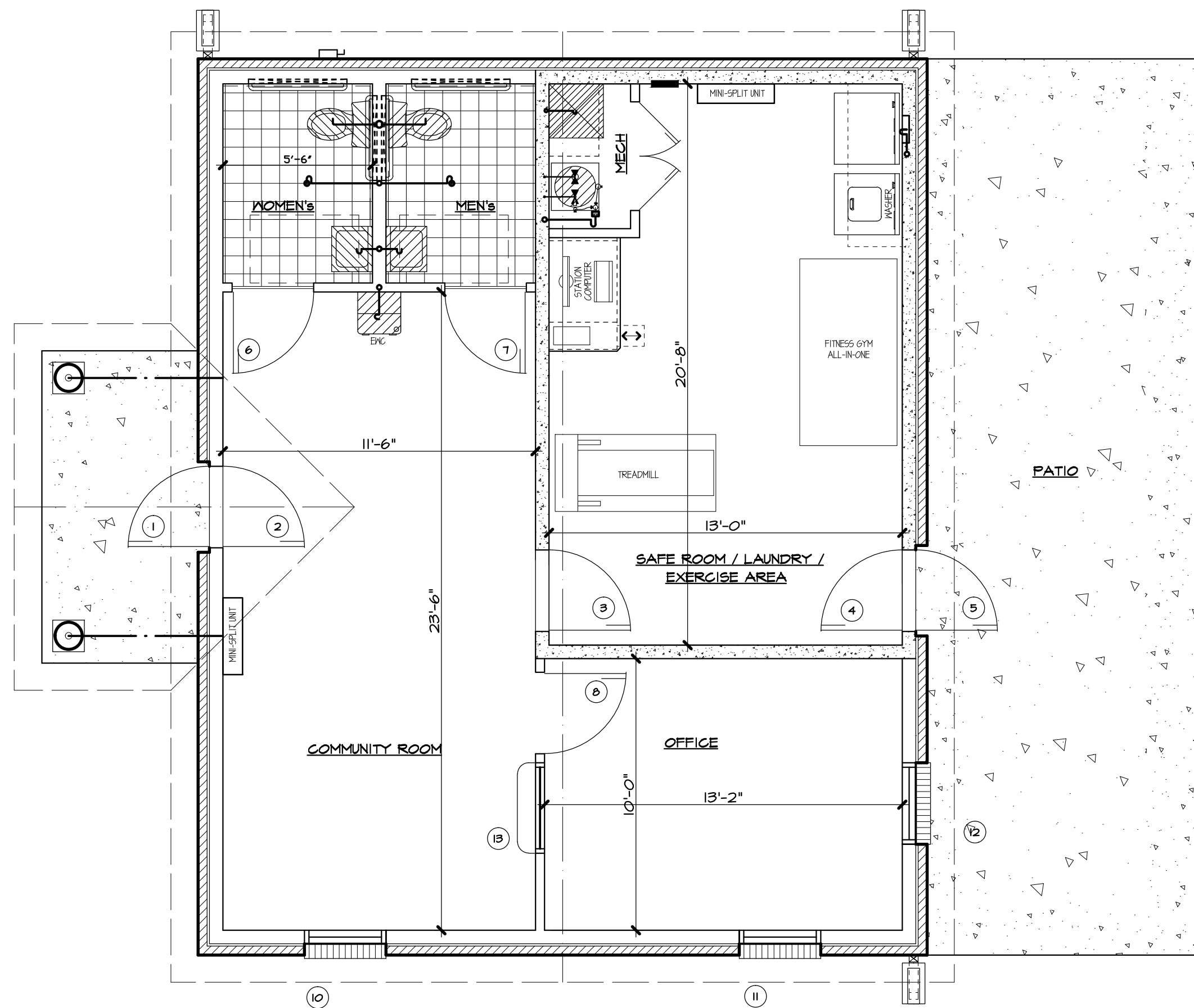
EXTERIOR ELEVATIONS
HOME "C"

NEW DEVELOPMENT FOR
HUFF Subdivision
SOUTHWEST DRIVE & HELLERS CHAPEL
JONESBORO, AR 72404
COMM. NO.: 54112
DATE: 12/04/12
FILE:



LITTLE & ASSOCIATES
ARCHITECTS
501 UNION
JONESBORO, AR
(870) 430-3813 TEL
(870) 430-3820 FAX
littlearch@bcglobal.net





FLOOR PLAN COMMUNITY BUILDING

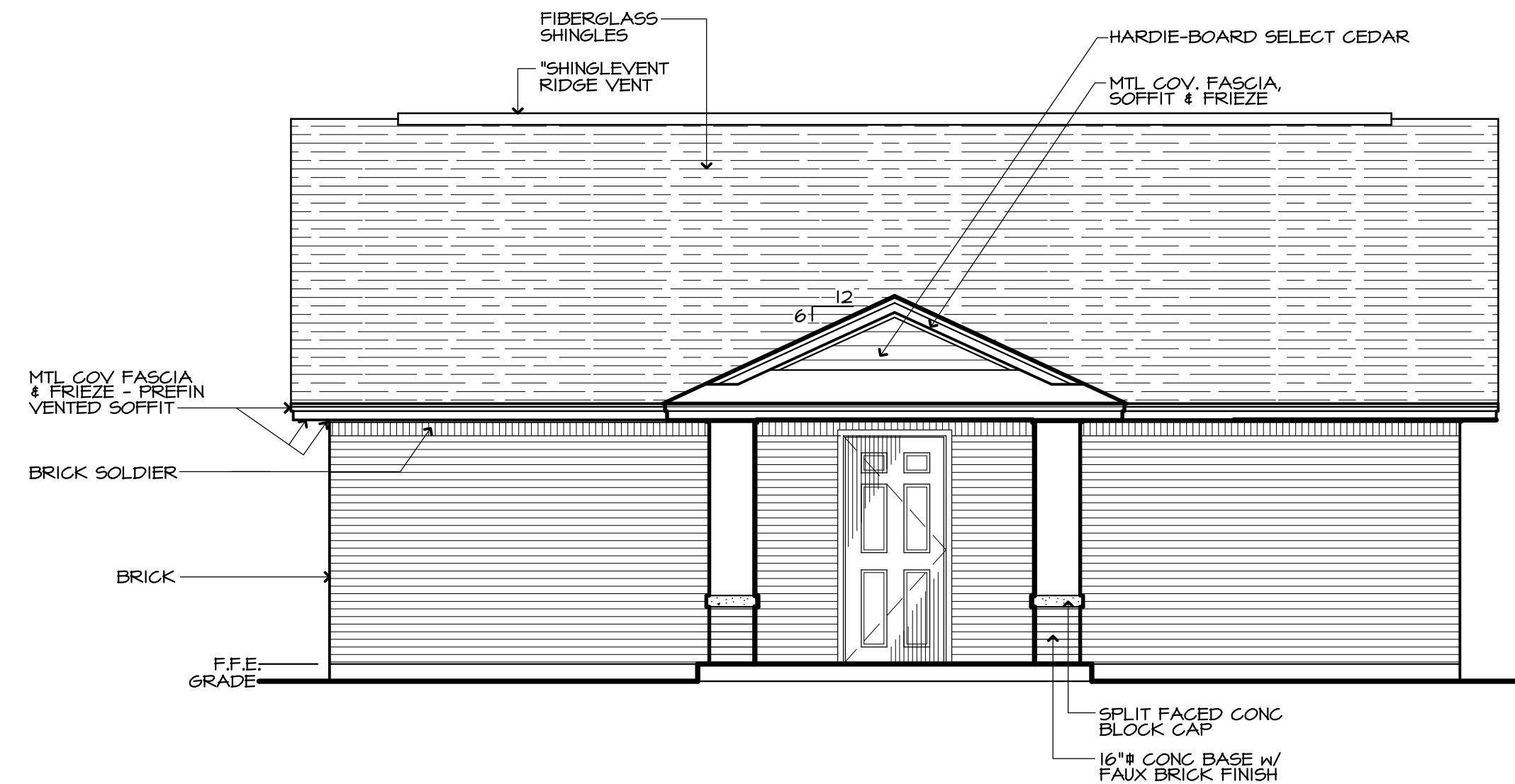
1/4"

SQUARE FOOTAGE CALCULATIONS:

LIVING SPACE (H/C):	533 SQ.FT.
SAFE ROOM (H/C):	264 SQ.FT.
TOTAL AREA:	802 SQ.FT.



ASSUMED
SEE SITE PLAN



FRONT ELEVATION - COMMUNITY BUILDING

1/4"

GENERAL NOTES FLOOR PLAN

- | MARK | DESCRIPTION |
|------|---|
| 1 | SEE SITE PLAN FOR UNIT LOCATION |
| 2 | 1/2" H MAX MTL THRESHOLD - ADA CERTIFIED |
| 3 | LINE OF FLOOR TYPE CHANGE - SEE INTERIOR FINISH SCHEDULE |
| 4 | BASE AND/OR WALL CABINET LOC - SEE MILLWORK FOR DETAIL |
| 5 | PANTRY / LINEN SHELVING - SEE MILLWORK FOR DETAIL |
| 6 | ROD & SHELF @ CLOSET - SEE MILLWORK FOR DETAIL |
| 7 | VANITY & MIRROR LOC - SEE MILLWORK FOR DETAIL |
| 8 | 22"x30" ATTIC ACCESS - SEE FRAMING PLAN FOR LOC & DETAIL |
| 9 | LINE OF MASONRY FINISH - SEE EXTERIOR ELEVATIONS |
| 10 | LINE OF ROOF OVERHANG - SEE EXTERIOR ELEVATIONS |
| 11 | 4"TK CONG STOOP AND/OR PORCH LOC - SEE FOUNDATION PLAN |
| 12 | CONG DRIVE - SEE SITE PLAN FOR DETAIL |
| 13 | (N/A THIS PLAN) |
| 14 | 4"Ø MTL DRYER DUCT W/ PRE-MFG VENT & DAMPER THRU WALL |
| 15 | APPLIANCE - ELEC RANGE LOC - SEE ALLOWANCES |
| 16 | APPLIANCE - OVER THE RANGE MICROWAVE & HOOD-VENTED - SEE ALLOWANCES |
| 17 | APPLIANCE - REFRIGERATOR W/ FREEZER LOC - SEE ALLOWANCES |
| 18 | APPLIANCE - DISHWASHER LOC - SEE ALLOWANCES |
| 19 | APPLIANCE - DISPOSAL LOC - SEE ALLOWANCES |
| 20 | APPLIANCE - WASHER & DRYER LOC - FURN & INSTALLED BY FUTURE TENANT |
| 21 | WATER HEATER & DRAIN PAN - SEE PLUMBING PLAN |
| 22 | AIR HANDLER & COIL ON PLATFORM - SEE HVAC PLAN |
| 23 | HVAC HEAT PUMP ON 4"TK CONG PAD - SEE HVAC PLAN |
| 24 | ELEC PANEL LOC - SEE ELEC POWER PLAN |
| 25 | ELEC METER & MAIN BREAKER LOC - SEE ELEC POWER PLAN |
| 26 | TELEPHONE ENTRANCE LOC IN PRE-MFG BOX - SEE ELEC POWER PLAN |
| 27 | CABLE TV ENTRANCE LOC IN PRE-MFG BOX - SEE ELEC POWER PLAN |

INTERIOR FINISH SCHEDULE

SPACE	FLOOR	BASE	HALLS	CEILING	CLG HT	REMARKS
	CARPET					
	CERAMIC TILE					
	EXPOSED CONG-SEALED					
		WOOD				
		WOOD W/ SHOE				
			1/2" GYP BD			
			1/2" GYP BD TYPE "WR" (1)			
				1/2" GYP BD (1)		
				1/2" GYP BD TYPE "WR" (1)		
					8'-0"	
2 AUTO GARAGE						
LIVING ROOM						
KITCHEN						
LAUNDRY						
MASTER BEDROOM						
BEDROOM 2						
BEDROOM 3						
MASTER BATH						
BATH 2						
HALLWAY						
CLOSET(S)						
LINEN						

(1) ALL CEILINGS TO HAVE SPRAYED & "KNOCKED DOWN" FINISH - PAINTED

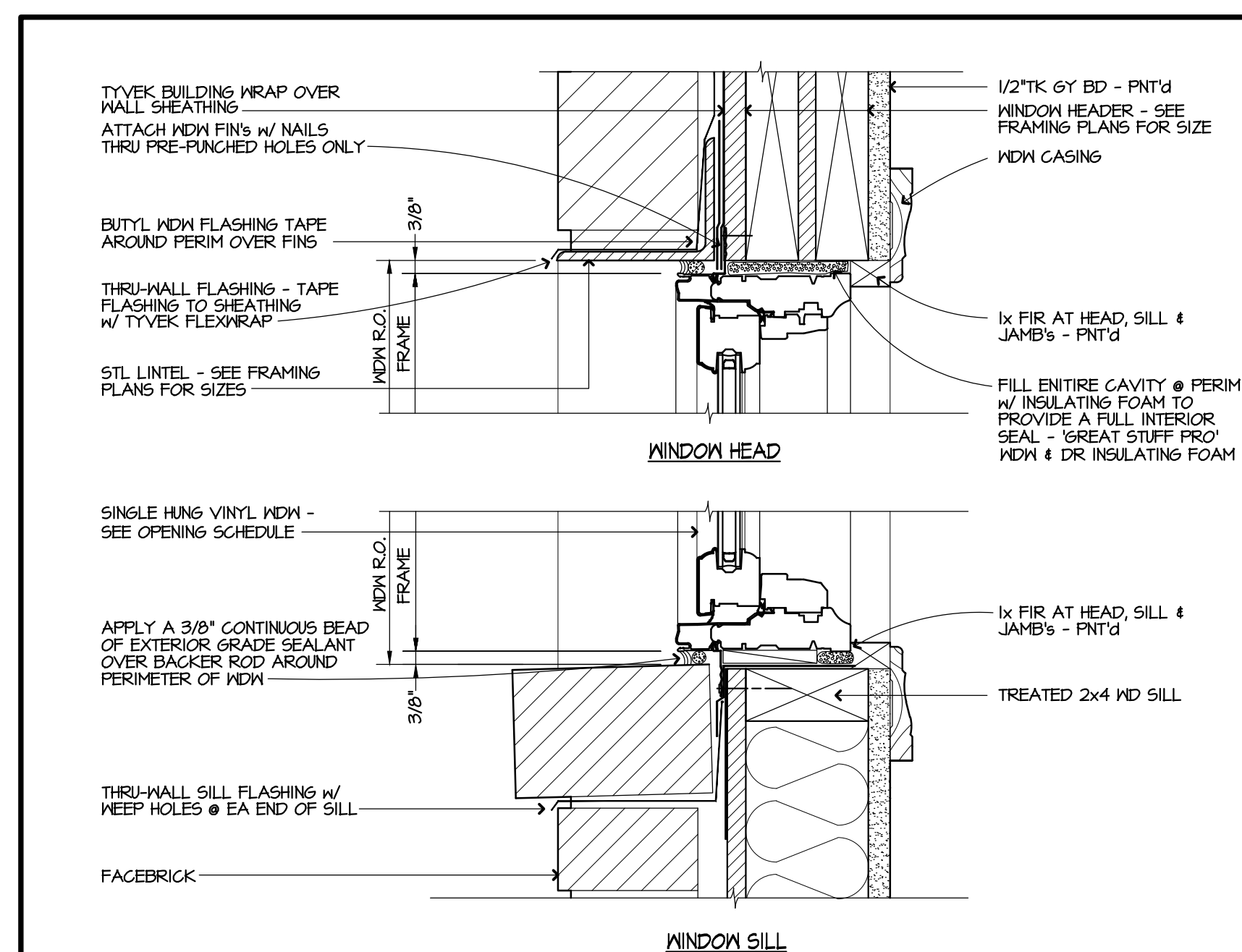
(2) 1/2" GYP BD TYPE "WR" ALL NET WALL LOCATIONS

OPENING SCHEDULE

MARK	DOORS			REMARKS		
	W	H	T	MAT	TYPE	
1	16'-0"	7'-0"		STL	A	(1) KEYPAD & (2) REMOTES
2	3'-0"	6'-8"		MTL	B	
3	3'-0"	6'-8"		MTL	C	
4	2'-6"	6'-8"		WD	D	
5	3'-0"	6'-8"		WD	D	
6	2'-8"	6'-8"		WD	D	
7	3'-0"	6'-8"		WD	D	
8	3'-0"	6'-8"		WD	E	
9	2'-0"	6'-8"		WD	D	
10	3'-0"	6'-8"		WD	D	
11	3'-0"	6'-8"		WD	E	
12	3'-0"	6'-8"		WD	D	
13	2'-6"	6'-8"		WD	D	
14	2'-6"	6'-8"		WD	D	
15	5'-0"	6'-8"		WD	F	PAIR OF BI-FOLD DOORS
16	3'-0"	6'-8"		MTL	B	
17	3'-0"	6'-8"		MTL	J	
18	3'-0"	6'-8"		MTL	J	
19	3'-0"	6'-8"		WD		CASED OPENING

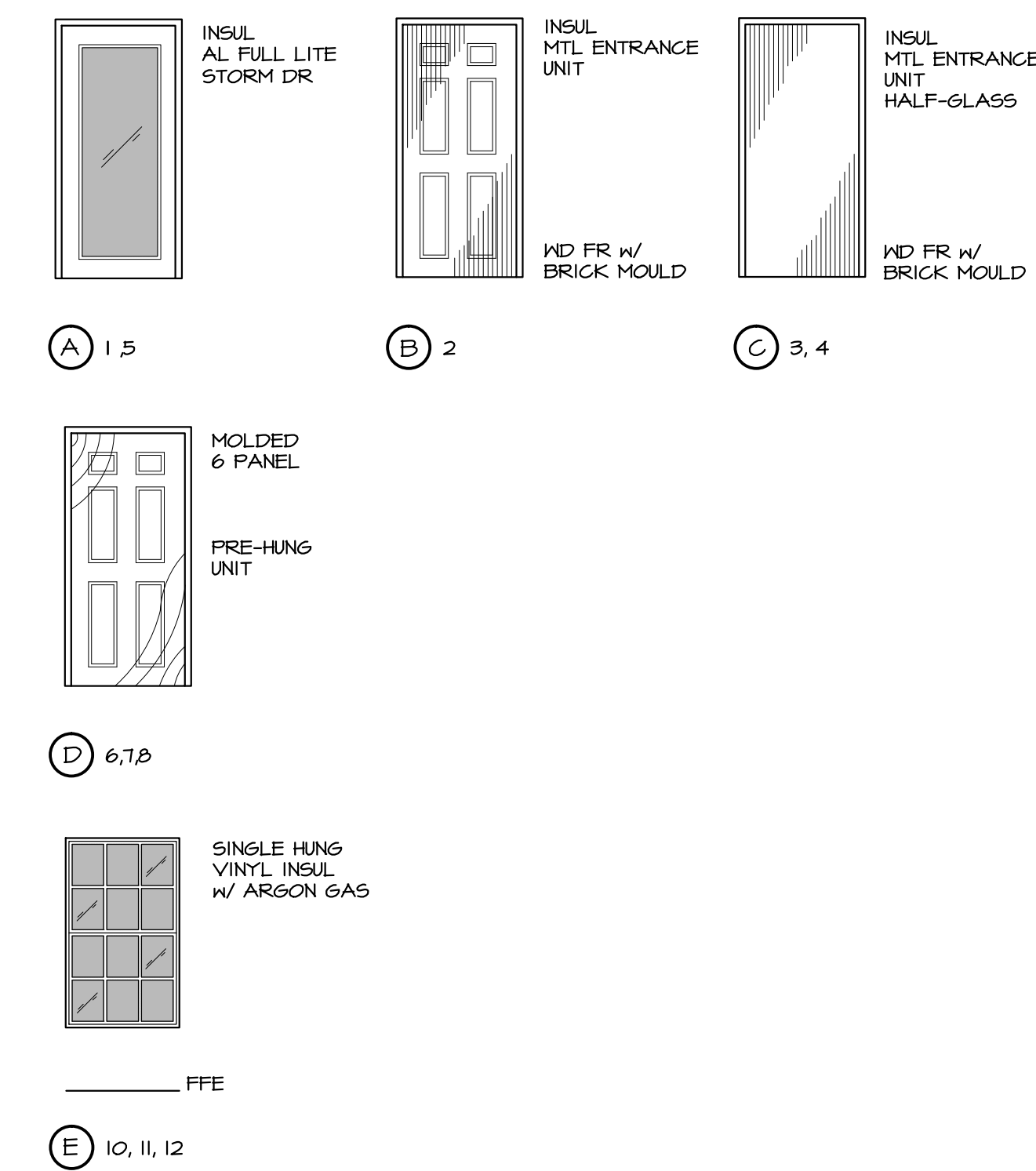
WINDOWS

MARK	W	H	T	MAT	TYPE	REMARKS
30	3'-0"	5'-0"		VINYL	G	
31	3'-0"	5'-0"		VINYL	G	
32	3'-0"	5'-0"		VINYL	G	
33	6'-0"	5'-0"		VINYL	H	COMPOSITE WINDOW
34	3'-0"	5'-0"		VINYL	G	



1 TYP WDM HEAD & SILL DETAIL
A2 3"

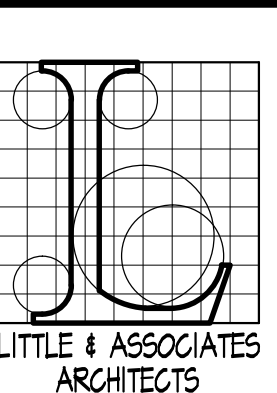
OPENING ELEVATIONS SCALE: 1/4"=1'-0"



FLOOR PLAN / EXTERIOR / SCHEDULES
COMMUNITY BUILDING

NEW DEVELOPMENT FOR:
HUFF Subdivision
SOUTHWEST DRIVE & KELLERS CHAPEL
JONESBORO, AR 72404

COMM. NO.: 54112
DATE: 12/04/12
FILE:



LITTLE & ASSOCIATES
ARCHITECTS

501 UNION
JONESBORO, AR
(870) 430-3813 TEL
(870) 430-3820 FAX
littlearch@bcbglobal.net

