

Legal Description**DESCRIPTION:**

LOTS 1, 2 AND 4 OF MEADOWS FIRST REPLAT OF MEADOWS ADDITION TO THE CITY OF JONESBORO, ARKANSAS AS SHOWN BY PLAT IN PLAT CABINET "C" AT PAGE 58 IN THE OFFICE OF CIRCUIT CLERK AND EX-OFFICIO RECORDER, CRAIGHEAD COUNTY, ARKANSAS.

AND

LOTS 8 - 12 IN BLOCK "2" OF WILSON SECOND ADDITION TO THE CITY OF JONESBORO, ARKANSAS AS SHOWN BY PLAT IN THE OFFICE OF CIRCUIT COURT CLERK AND EX-OFFICIO RECORDER, CRAIGHEAD COUNTY, ARKANSAS

DESCRIPTION: TRACT "A"

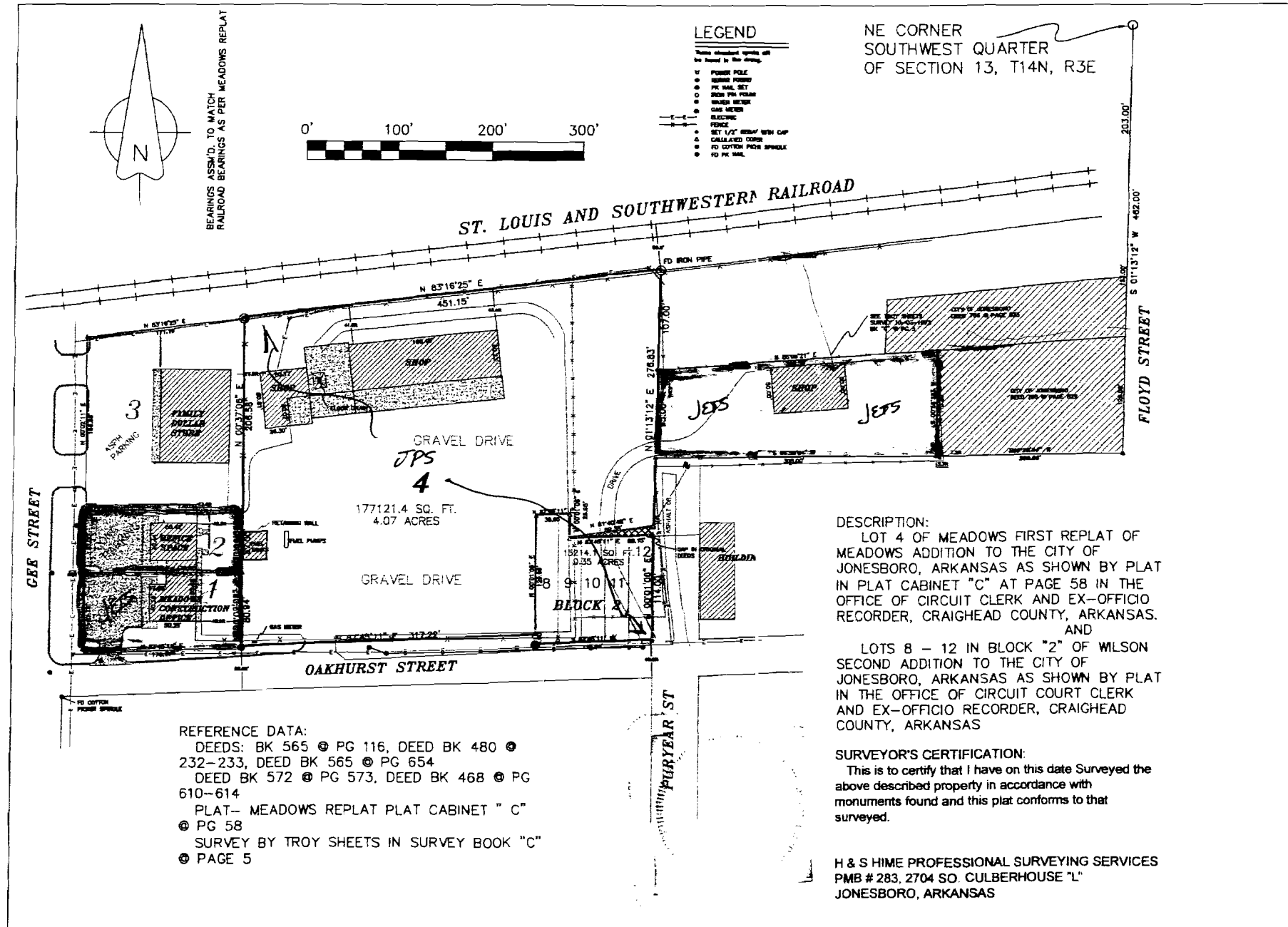
A PART OF THE NORTHEAST QUARTER OF THE SOUTHWEST QUARTER OF SECTION 13, TOWNSHIP 14 NORTH, RANGE 3 EAST, CRAIGHEAD COUNTY, ARKANSAS AND BEING MORE PARTICULARLY DESCRIBED AS FOLLOWS:

Commencing at the Northeast corner of the Southwest Quarter of said Section 13; thence South 01°13'12" West 462.00 feet; thence South 89°39'04" West 200.00 feet to the point of beginning proper; thence continue South 89°39'04" West 308.00 feet; thence North 01°13'12" East 95.00 feet; thence North 86°09'21" East 308.50 feet; thence South 00°55'25" West 113.80 feet; to the point of beginning, having an area of 32117.43 square feet, 0.74 acres more or less and being subject to all public and private roads and easement. ALSO KNOWN AS A PART OF THE COBB SURVEY OF THE NE 1/4, SW 1/4 OF SECTION 13, T14N, R3E AS RECORDED IN SURVEY BOOK 48 AT PAGE 19.

SURVEYOR'S CERTIFICATION:

This is to certify that I have on this date Surveyed the above described property in accordance with monuments found and this plat conforms to that surveyed.

H & S HIME PROFESSIONAL SURVEYING SERVICES
PMB # 283, 2704 SO. CULBERHOUSE "L"
JONESBORO, ARKANSAS



PLAT OF SURVEY			
drawn:	HH	LOT 4 OF MEADOWS FIRST REPLAT OF MEADOWS ADD. AND LOTS 8-12 IN BLOCK 12 OF WILSON SECOND ADDITION OF JONESBORO, ARKANSAS	client:
date:	3-25-2010		MEADOWS CONSTRUCTION
scale:	1"=100'		

H & S HIME PROFESSIONAL SURVEYING SERVICES

PMB # 283
2704 SO. CULBERHOUSE
SUITE "L"
JONESBORO, ARKANSAS 72401

PHONE: 870 972 1288
FAX: 870 972 1011
E-MAIL: hchime@cox-internet.com

