

RESIDENTIAL SUBDIVISION PLANS

HARRISON HILLS

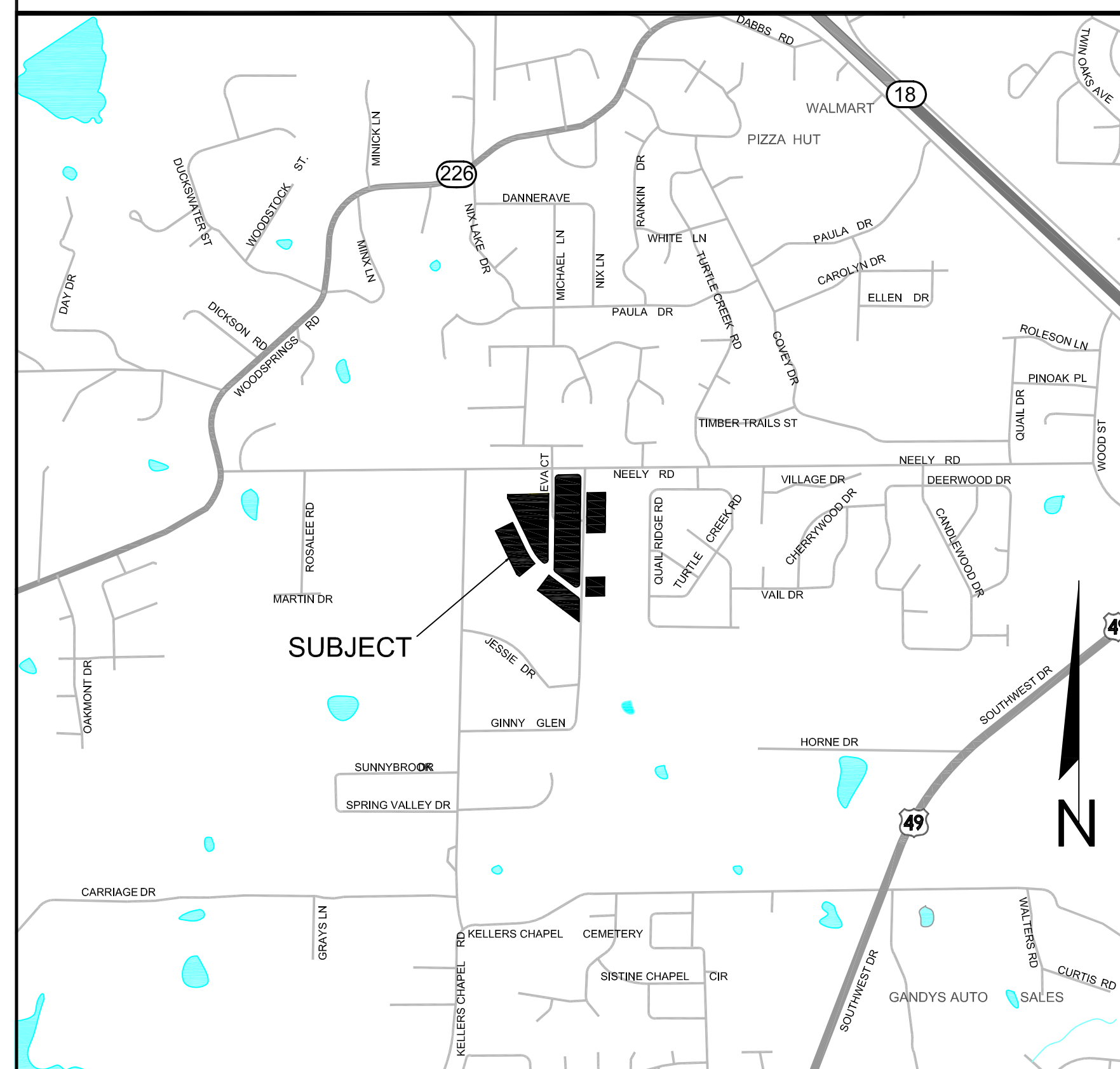
A REPLAT IN GRIFFIN SUBDIVISION

JONESBORO, ARKANSAS

MARCH, 2014

INDEX TO SHEETS

- 1 OF 7 TITLE SHEET / INDEX
- 2 OF 7 RECORD PLAT
- 3 OF 7 GRADING/DRAINAGE PLAN
- 4 OF 7 PLAN AND PROFILE - ROLLING HILLS DRIVE
- 5 OF 7 PLAN AND PROFILE - HARRISON HILLS DRIVE
- 6 OF 7 PLAN AND PROFILE - SERENITY HILLS DRIVE
- 7 OF 7 DETAILS



VICINITY MAP

NTS

..\Images\Sigs\engineer.GIF



Know what's below.
Call before you dig.

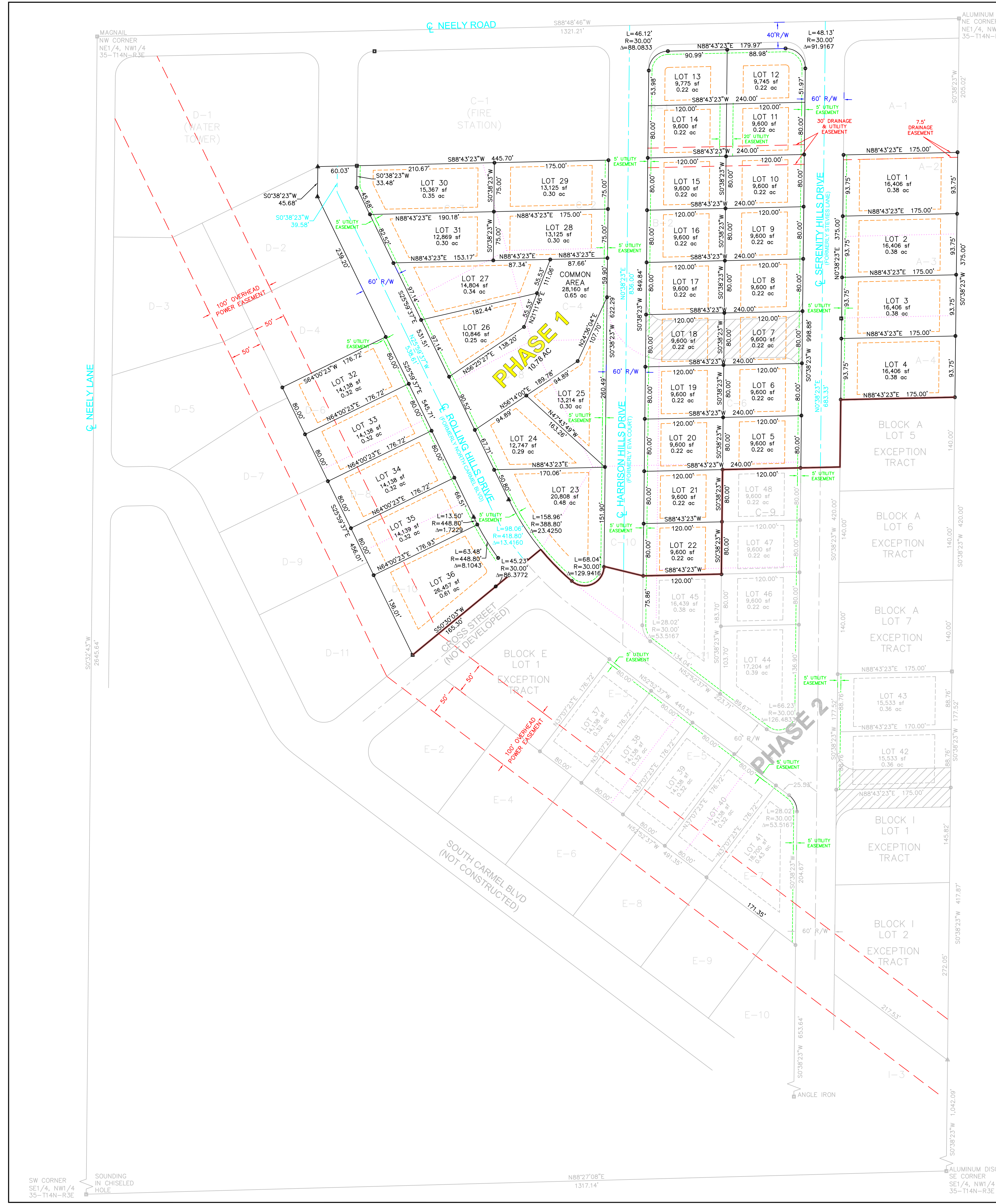
DATE	REVISION	BY

RESIDENTIAL SUBDIVISION PLANS
HARRISON HILLS - A REPLAT IN GRIFFIN SUB
JONESBORO, ARKANSAS

MCALISTER ENGINEERING
CIVIL ENGINEERING AND LAND SURVEYING
4508 STADIUM BLVD STE D JONESBORO, AR 72404
870-931-1420

CLARENCE W. "MAC" MCALISTER, PE, PS

DRAWN BY: DM	CHECKED BY: CM
SCALE:	
DATE: 10MAR14	CAD FILE: 1355122Harrison.dwg
DWG REF: 35-14N-03E	
JOB NO. 1355122	SHEET 1 / 7
PROJECT 1355122	



DESCRIPTION
 LOTS 2-4 IN BLOCK A, LOTS 1 AND 2 IN BLOCK B, LOTS 2-11 IN BLOCK C, AND LOTS 6, 8, AND 10 IN BLOCK D, OF GRIFFIN SUBDIVISION OF THE EAST HALF (E1/2) OF THE NORTHWEST QUARTER (NW1/4) OF SECTION 35, TOWNSHIP 14 NORTH, RANGE 3 EAST, FILED IN PLAT BOOK 158 AT PAGE 52 IN THE OFFICE OF THE CIRCUIT CLERK FOR CRAIGHEAD COUNTY IN JONESBORO, ARKANSAS, BEING SUBJECT TO ALL EASEMENTS, RESTRICTIONS, RESERVATIONS, AND RIGHTS OF WAY OF RECORD.

OWNER'S CERTIFICATION
 WE HEREBY CERTIFY THAT WE ARE THE OWNERS OF THE ABOVE DESCRIBED PROPERTY AND HAVE CAUSED SAME TO BE REPLATED AS SHOWN HEREON, AND THAT WE HEREBY DEDICATE THE PERPETUAL USE OF ALL EASEMENTS AND STREET RIGHTS OF WAY AS NOTED.

CERTIFICATION
 I HEREBY CERTIFY THAT McALISTER ENGINEERING HAS THIS DATE MADE A BOUNDARY SURVEY OF THE ABOVE DESCRIBED PROPERTY AND THAT ALL PROPERTY LINES AND CORNER MONUMENTS HAVE BEEN CORRECTLY ESTABLISHED TO THE BEST OF MY KNOWLEDGE AND BELIEF.

BOB HARRISON, DEVELOPER (date)

BETTY BROSKY, TRUSTEE OF FLORA BROSKY REVOCABLE TRUST (date)

CLARENCE W. McALISTER, ES NO. 1303 (date)

GRID NORTH
 BASED ON GPS OBSERVATION

(IN FEET)
 1 inch = 80 ft.

LEGEND

- - FOUND IRON PIN (1" PIPE EXCEPT AS NOTED)
- - SET IRON PIN 1/2" REBAR W/ PS #1303 CAP
- ▲ - COMPUTED POINT / POINT NOT SET
- - BUILDING SETBACK
- - ORIGINAL LOT LINE TO BE EXTINGUISHED
- - ORIGINAL LOT LINE TO REMAIN
- A-1 - ORIGINAL BLOCK-LOT NUMBERS
- - RIGHT OF WAY TO BE ABANDONED
- - PHASE LINE

NOTES

- SURVEY FOR BOB HARRISON
- PROPERTY NOT LOCATED IN THE 100 YEAR FLOODPLAIN AS SHOWN BY FLOOD INSURANCE RATE MAP NUMBER 050048 PANEL 131 C DATED SEPTEMBER 27, 1991
- ZONING INFORMATION (R1) - STREET SETBACK = 25' SIDE SETBACK = 7.5' REAR SETBACK = 25'
- BILL OF ASSURANCE TO INCLUDE FORMATION OF PROPERTY OWNER'S ASSOCIATION TO MAINTAIN COMMON AREAS

REFERENCE DOCUMENTS:

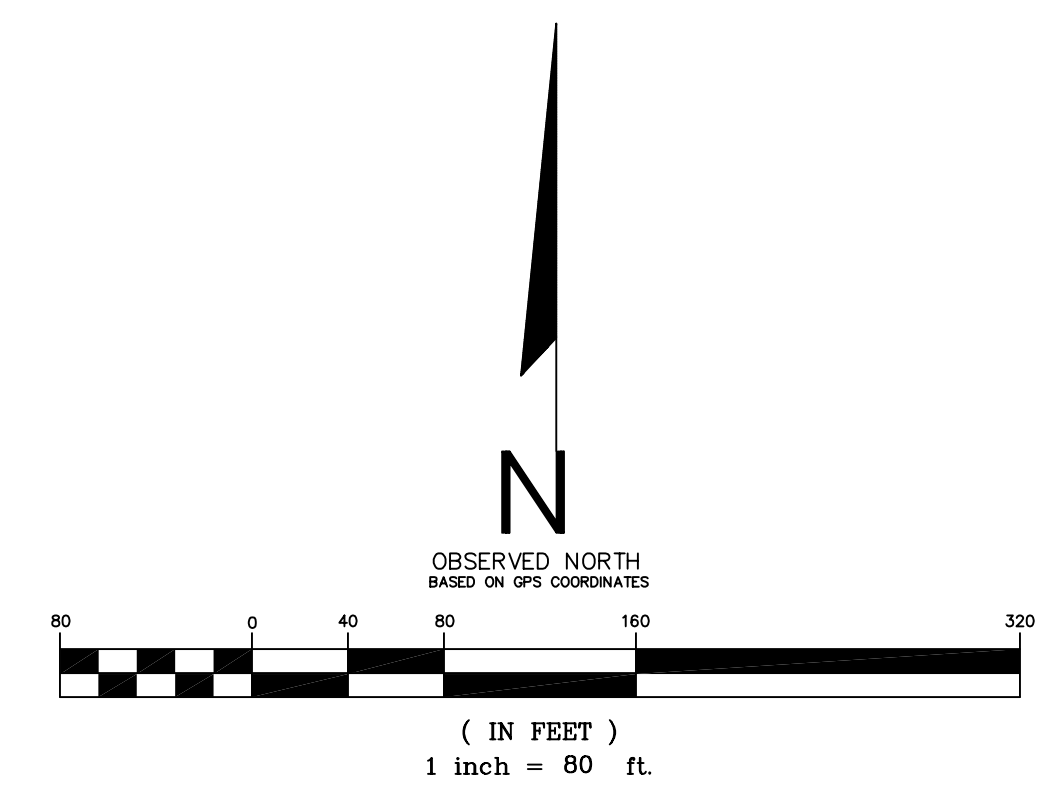
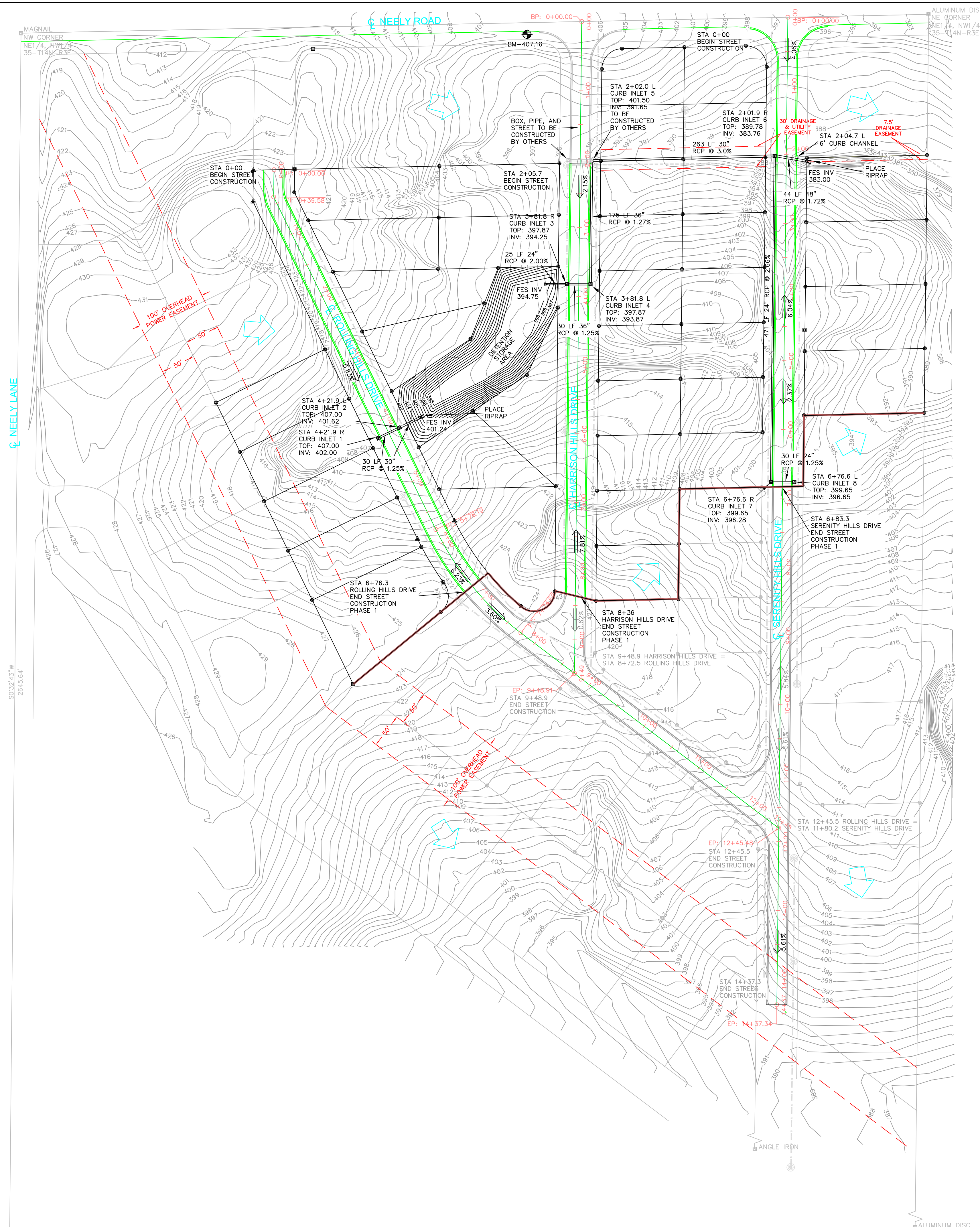
- PLAT OF GRIFFIN SUBDIVISION FILED IN PLAT BOOK 158 AT PAGE 52 IN THE OFFICE OF THE CIRCUIT CLERK FOR CRAIGHEAD COUNTY IN JONESBORO, ARKANSAS.

RECORD PLAT

HARRISON HILLS - PHASE 1
JONESBORO, ARKANSAS
 A REPLAT IN GRIFFIN SUBDIVISION

MCALISTER ENGINEERING CIVIL ENGINEERING AND LAND SURVEYING 4508 STADIUM BLVD, STE D, JONESBORO, AR 72404 870-931-1420	<table border="1" style="width: 100%; border-collapse: collapse;"> <tr> <td>DRAWN BY: JH</td> <td>CHECKED BY: CM</td> </tr> <tr> <td>SCALE: 1" = 80'</td> <td>DATE: 15MAY14</td> </tr> <tr> <td colspan="2">CAD FILE: 1355122HarrisonPlat.dwg</td> </tr> <tr> <td colspan="2">DWG REF: 35-14N-03E</td> </tr> <tr> <td>JOB NO. 1355122</td> <td>SHEET 2 / 7</td> </tr> <tr> <td colspan="2">SURVEY # 500-14N-03E-0-35-400-16-1303</td> </tr> </table>	DRAWN BY: JH	CHECKED BY: CM	SCALE: 1" = 80'	DATE: 15MAY14	CAD FILE: 1355122HarrisonPlat.dwg		DWG REF: 35-14N-03E		JOB NO. 1355122	SHEET 2 / 7	SURVEY # 500-14N-03E-0-35-400-16-1303	
DRAWN BY: JH	CHECKED BY: CM												
SCALE: 1" = 80'	DATE: 15MAY14												
CAD FILE: 1355122HarrisonPlat.dwg													
DWG REF: 35-14N-03E													
JOB NO. 1355122	SHEET 2 / 7												
SURVEY # 500-14N-03E-0-35-400-16-1303													
CLARENCE W. "MAC" MCALISTER, PE, PS													

DATE	REVISION	BY



- LEGEND**
- EXISTING CONTOUR
 - FINISH CONTOUR
 - DIRECTION OF FLOW
 - SURFACE FLOW
 - FLARED END SECTION
 - PROPOSED CURB INLET
 - PROPOSED SEWER LINE W MANHOLE
 - PROPOSED WATER LINE
 - BENCHMARK - 407.16 CURB INLET WEST OF HARRISON HILLS DRIVE ON NEELY ROAD

NOTES

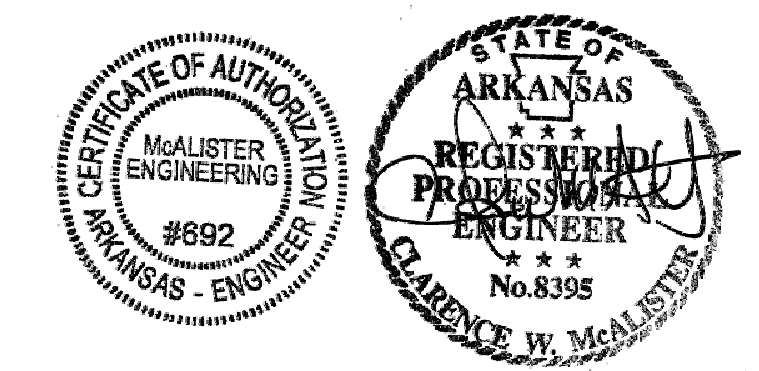
1. SURVEY FOR BOB HARRISON
2. GPS CONTROL - TIED SITE TO CITY OF JONESBORO GPS MONUMENT 65 & 66.
3. HORIZONTAL CONTROL - NAD83, THIRD ORDER CLASS 1, ARKANSAS SPC NORTH ZONE
3. VERTICAL CONTROL - NAVD 88, THIRD ORDER VERTICAL
4. OWNER INFORMATION: BOB HARRISON, BOB HARRISON CONSTRUCTION PO BOX 19118; JONESBORO AR 72403
ENGINEER INFORMATION: MCALISTER ENGINEERING, 4508 STADIUM BLVD STE D; JONESBORO, AR 72404
5. PROPERTY NOT LOCATED IN THE 100 YEAR FLOODPLAIN AS SHOWN BY FLOOD INSURANCE RATE MAP NUMBER 050048 PANEL 131C DATED SEPTEMBER 27, 1991
6. PLACE CONSTRUCTION ENTRANCE/EXIT TO CONTROL TRACKING OF SEDIMENT ONTO ROADWAYS. STABILIZE ANY CUT SLOPE IMMEDIATELY WITH SEEDING, SPRIGGING, SODDING, OR OTHER APPROVED METHOD UPON COMPLETION TO PREVENT EROSION.
7. STABILIZE SLOPES GREATER THAN 3:1 WITH TERRACED LANDSCAPING, RIPRAP, GEGRID, RETAINING WALL, PAVING OR OTHER ARCHITECT/ENGINEER APPROVED METHOD.
8. ALL DRAINAGE STRUCTURES SHALL BE BUILT IN ACCORDANCE WITH THE CITY OF JONESBORO, CRAIGHEAD COUNTY, ARKANSAS STORMWATER DRAINAGE DESIGN MANUAL.
9. SOIL TYPE: MEMPHIS SILT LOAM, 12 TO 40% SLOPES (TYPE B)/ LORING SILT LOAM, 8-12% SLOPES (TYPE C)
10. MINIMUM REQUIRED ZONING SETBACKS: RESIDENTIAL (R1) -
STREET SETBACK - 25'
SIDE SETBACK - 7.5'
REAR SETBACK - 25'
11. BILL OF ASSURANCE TO INCLUDE FORMATION OF PROPERTY OWNER'S ASSOCIATION TO MAINTAIN COMMON AREAS

REFERENCE DOCUMENTS:

1. PLAT OF GRIFFIN SUBDIVISION FILED IN PLAT BOOK 158 AT PAGE 52 IN THE OFFICE OF THE CIRCUIT CLERK FOR CRAIGHEAD COUNTY IN JONESBORO, ARKANSAS.

DESCRIPTION

LOTS 2-4 AND LOT 8 IN BLOCK A, LOTS 1 AND 2 IN BLOCK B, LOTS 2-11 IN BLOCK C, LOTS 6, 8, AND 10 IN BLOCK D, AND LOTS 3, 5, AND 7 IN BLOCK E OF GRIFFIN SUBDIVISION OF THE EAST HALF (E1/2) OF THE NORTHWEST QUARTER (NW1/4) OF SECTION 35, TOWNSHIP 14 NORTH, RANGE 3 EAST, FILED IN PLAT BOOK 158 AT PAGE 52 IN THE OFFICE OF THE CIRCUIT CLERK FOR CRAIGHEAD COUNTY IN JONESBORO, ARKANSAS, BEING SUBJECT TO ALL EASEMENTS, RESTRICTIONS, RESERVATIONS, AND RIGHTS OF WAY OF RECORD.

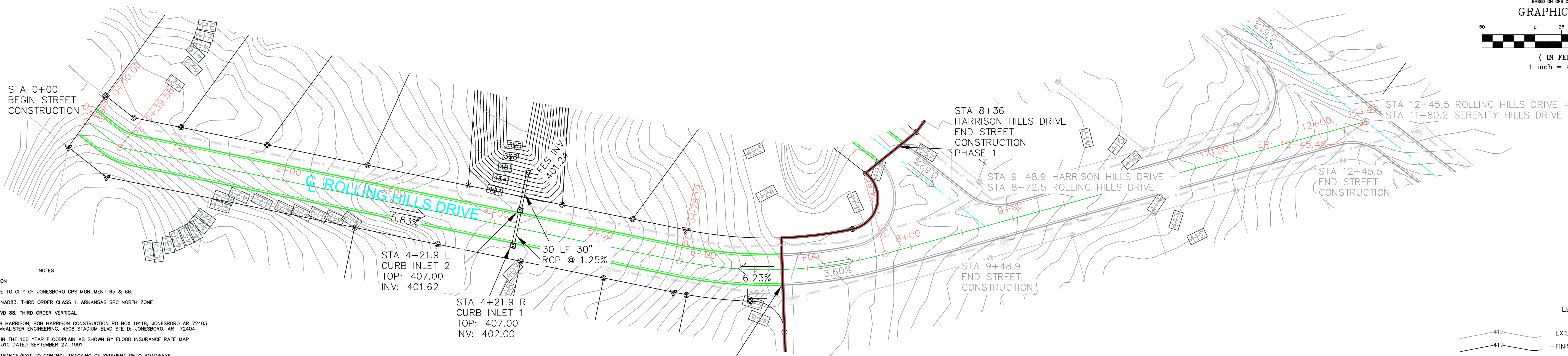
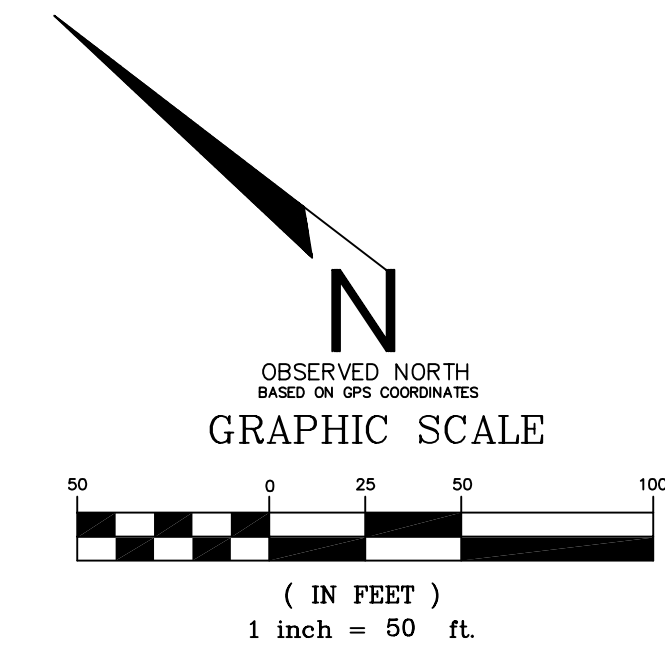


GRADING / DRAINAGE PLAN
RESIDENTIAL SUBDIVISION PLANS
HARRISON HILLS - A REPLAT IN GRIFFIN SUB
JONESBORO, ARKANSAS

MCALISTER ENGINEERING CIVIL ENGINEERING AND LAND SURVEYING 4508 STADIUM BLVD STE D JONESBORO, AR 72404 870-931-1420	DRAWN BY: DM SCALE: 1" = 80' DATE: 9APR14 DWG REF. 35-14N-03E JOB NO. 1355122 PROJECT 1355122	CHECKED BY: CM CAD FILE 1355122HarrisonUtilities SHEET 3 / 7
-------------------------------------------------------------------------------------------------------------------------------------	--------------------------------------------------------------------------------------------------------------	--------------------------------------------------------------------

CLARENCE W. "MAC" MCALISTER, PE, PS

SW CORNER SE1/4, NW1/4 35-114N-R3E
SOUNDING IN CHISELED HOLE

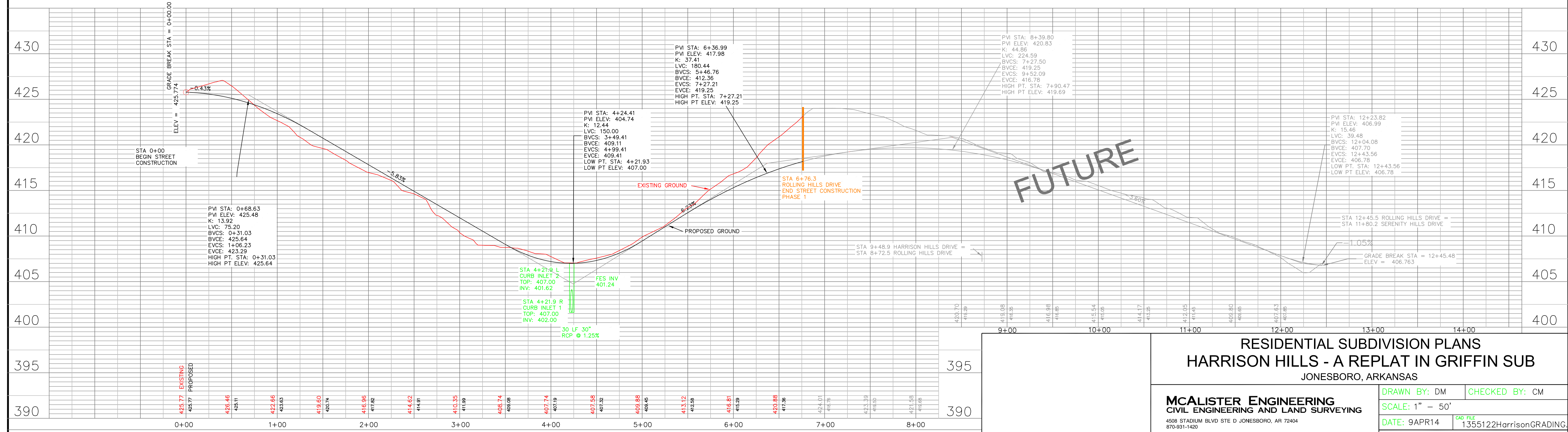


- NOTES
- SURVEY FOR BOB HARRISON
 - GPS CONTROL - TIED SITE TO CITY OF JONESBORO GPS MONUMENT 65 & 66.
 - HORIZONTAL CONTROL - NAD83, THIRD ORDER CLASS 1, ARKANSAS SPC NORTH ZONE
 - VERTICAL CONTROL - NAVD 88, THIRD ORDER VERTICAL
 - OWNER INFORMATION: BOB HARRISON, BOB HARRISON CONSTRUCTION PO BOX 19118, JONESBORO AR 72403
ENGINEER INFORMATION: MCALISTER ENGINEERING, 4508 STADIUM BLVD STE D, JONESBORO, AR 72404
 - PROPERTY NOT LOCATED IN THE 100 YEAR FLOODPLAIN AS SHOWN BY FLOOD INSURANCE RATE MAP NUMBER 020048 PANEL 131C DATED SEPTEMBER 27, 1991
 - PLACE CONSTRUCTION ENTRANCE/EXIT TO CONTROL TRACKING OF SEDIMENT ONTO ROADWAYS. STABILIZE ANY CUT SLOPE IMMEDIATELY WITH SEEDING, SPRIGGING, SODDING, OR OTHER APPROVED METHOD UPON COMPLETION TO PREVENT EROSION.
 - STABILIZE SLOPES GREATER THAN 3:1 WITH TERRACED LANDSCAPING, RIPRAP, GEGRID, RETAINING WALL, PAVING OR OTHER ARCHITECT/ENGINEER APPROVED METHOD.
 - ALL DRAINAGE STRUCTURES SHALL BE BUILT IN ACCORDANCE WITH THE CITY OF JONESBORO, CRAIGHEAD COUNTY, ARKANSAS STORMWATER DRAINAGE DESIGN MANUAL.
 - SOIL TYPE: MEMPHIS SILT LOAM, 12 TO 40% SLOPES (TYPE B)/ LORING SILT LOAM, 8-12% SLOPES (TYPE C)
 - MINIMUM REQUIRED ZONING SETBACKS: RESIDENTIAL (R1)
 - STREET SETBACK - 25'
 - SIDE SETBACK - 7.5'
 - REAR SETBACK - 25'
 - BILL OF ASSURANCE TO INCLUDE FORMATION OF PROPERTY OWNER'S ASSOCIATION TO MAINTAIN COMMON AREAS
- REFERENCE DOCUMENTS:
- PLAT OF GRIFFIN SUBDIVISION FILED IN PLAT BOOK 158 AT PAGE 52 IN THE OFFICE OF THE CIRCUIT CLERK FOR CRAIGHEAD COUNTY IN JONESBORO, ARKANSAS.

- LEGEND
- 412 - EXISTING CONTOUR
 - 412 - FINISH CONTOUR
 - - DIRECTION OF FLOW
 - ↻ - SURFACE FLOW
 - ⊥ - FLARED END SECTION
 - - PROPOSED CURB INLET
 - - PROPOSED SEWER LINE W MANHOLE
 - - - - - PROPOSED WATER LINE
 - ⊕ - BENCHMARK - 407.16 CURB INLET WEST OF HARRISON HILLS DRIVE ON NEELY ROAD



PLAN AND PROFILE - ROLLING HILLS DRIVE

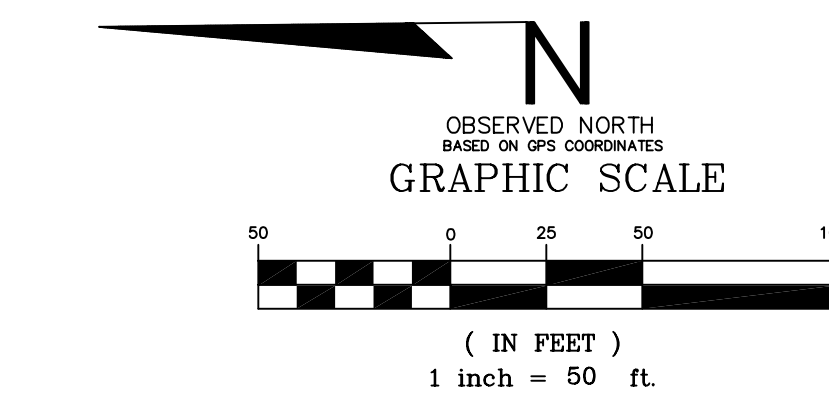
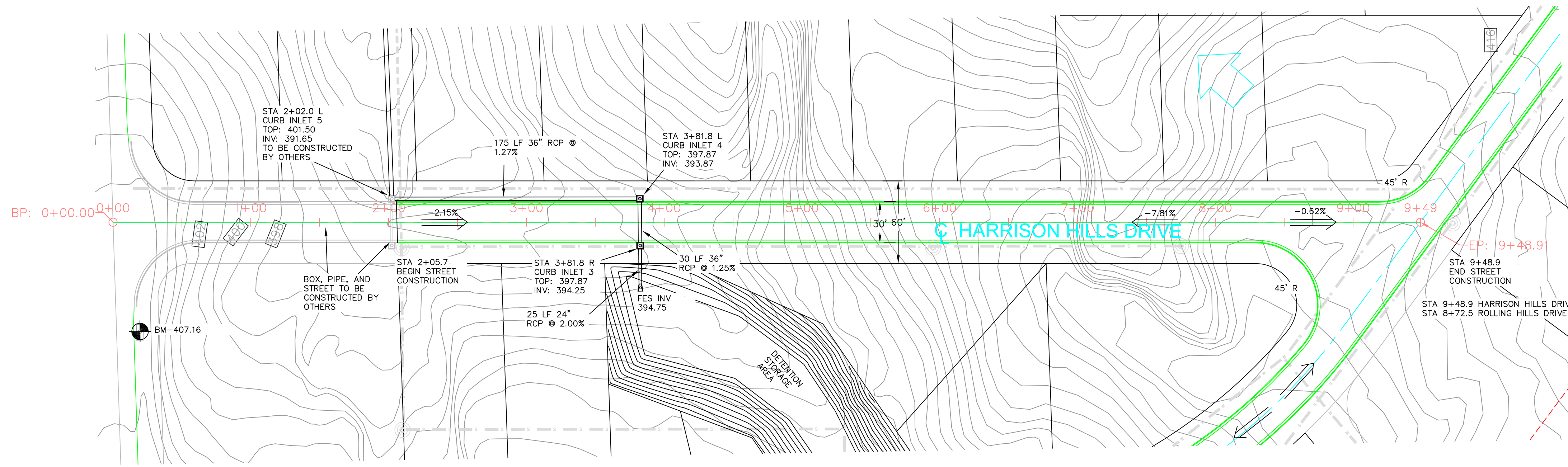


SCALE : HORIZONTAL SCALE: 1" = 50'
VERTICAL SCALE: 1" = 5'

RESIDENTIAL SUBDIVISION PLANS
HARRISON HILLS - A REPLAT IN GRIFFIN SUB
JONESBORO, ARKANSAS

MCALISTER ENGINEERING CIVIL ENGINEERING AND LAND SURVEYING 4508 STADIUM BLVD STE D JONESBORO, AR 72404 870-931-1420	DRAWN BY: DM SCALE: 1" = 50' DATE: 9APR14 DWG REF: 35-14N-03E PROJECT 1355122	CHECKED BY: CM 1355122HarrisonGRADING.CAD FILE JOB NO. 1355122 SHEET 4 / 7
-------------------------------------------------------------------------------------------------------------------------------------	-------------------------------------------------------------------------------------------	-------------------------------------------------------------------------------------

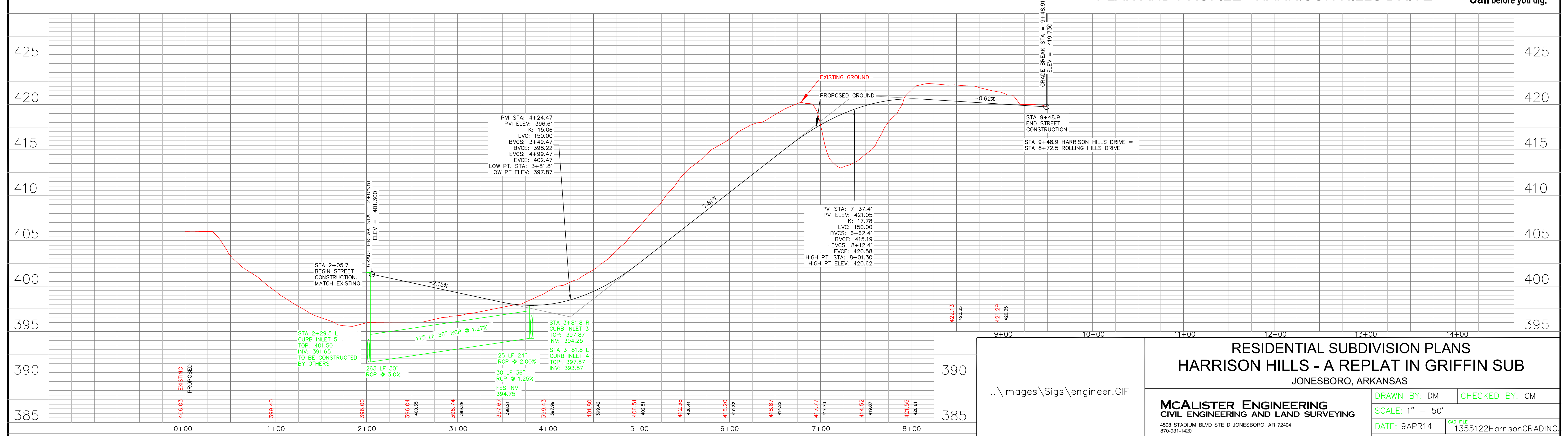
CLARENCE W. "MAC" MCALISTER, PE, PS



- LEGEND**
- EXISTING CONTOUR
 - FINISH CONTOUR
 - DIRECTION OF FLOW
 - SURFACE FLOW
 - FLARED END SECTION
 - PROPOSED CURB INLET
 - PROPOSED SEWER LINE W MANHOLE
 - PROPOSED WATER LINE
 - BENCHMARK - 407.16 CURB INLET WEST OF HARRISON HILLS DRIVE ON NEELY ROAD

- NOTES**
- SURVEY FOR BOB HARRISON
 - GPS CONTROL - TIED SITE TO CITY OF JONESBORO GPS MONUMENT 65 & 66.
 - HORIZONTAL CONTROL - NAD83, THIRD ORDER CLASS 1, ARKANSAS SPC NORTH ZONE
 - VERTICAL CONTROL - NAVD 88, THIRD ORDER VERTICAL
 - OWNER INFORMATION: BOB HARRISON, BOB HARRISON CONSTRUCTION PO BOX 19118, JONESBORO AR 72403
ENGINEER INFORMATION: MCALISTER ENGINEERING, 4508 STADIUM BLVD STE D, JONESBORO, AR 72404
 - PROPERTY NOT LOCATED IN THE 100 YEAR FLOODPLAIN AS SHOWN BY FLOOD INSURANCE RATE MAP NUMBER 050048 PANEL 131C DATED SEPTEMBER 27, 1991
 - PLACE CONSTRUCTION ENTRANCE/EXIT TO CONTROL TRACKING OF SEDIMENT ONTO ROADWAYS. STABILIZE ANY CUT SLOPES IMMEDIATELY WITH SEEDING, SPRIGGING, SOODING, OR OTHER APPROVED METHOD UPON COMPLETION TO PREVENT EROSION.
 - STABILIZE SLOPES GREATER THAN 3:1 WITH TERRACED LANDSCAPING, RIPRAP, GEOTGRID, RETAINING WALL, PAVING OR OTHER ARCHITECT/ENGINEER APPROVED METHOD.
 - ALL DRAINAGE STRUCTURES SHALL BE BUILT IN ACCORDANCE WITH THE CITY OF JONESBORO, CRAIGHEAD COUNTY, ARKANSAS STORMWATER DRAINAGE DESIGN MANUAL.
 - SOIL TYPE: MEMPHIS SILT LOAM, 12 TO 40% SLOPES (TYPE B)/ LORING SILT LOAM, 8-12% SLOPES (TYPE C)
 - MINIMUM REQUIRED ZONING SETBACKS: RESIDENTIAL (R1) - STREET SETBACK - 25'
SIDE SETBACK - 7.5'
REAR SETBACK - 25'
- REFERENCE DOCUMENTS:**
- PLAT OF GRIFFIN SUBDIVISION FILED IN PLAT BOOK 158 AT PAGE 52 IN THE OFFICE OF THE CIRCUIT CLERK FOR CRAIGHEAD COUNTY IN JONESBORO, ARKANSAS.

PLAN AND PROFILE - HARRISON HILLS DRIVE

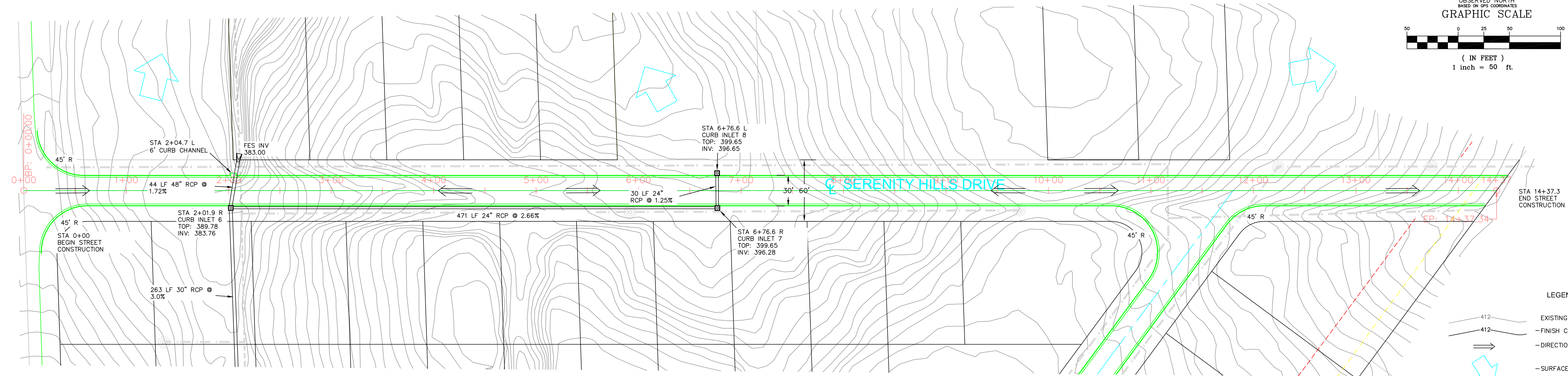
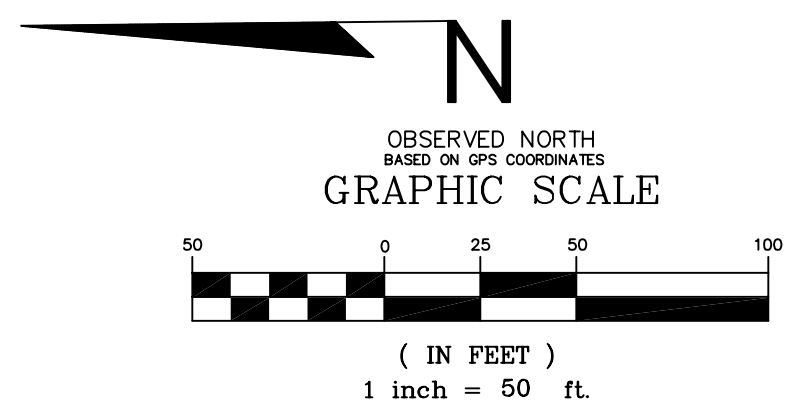


SCALE : HORIZONTAL SCALE: 1" = 50'
VERTICAL SCALE: 1" = 5'

RESIDENTIAL SUBDIVISION PLANS
HARRISON HILLS - A REPLAT IN GRIFFIN SUB
JONESBORO, ARKANSAS

.. \Images\Sigs\engineer.GIF

MCALISTER ENGINEERING CIVIL ENGINEERING AND LAND SURVEYING 4508 STADIUM BLVD STE D JONESBORO, AR 72404 870-931-1420		DRAWN BY: DM	CHECKED BY: CM
DATE: 9APR14		SCALE: 1" = 50'	
JOB NO. 1355122		PROJECT 1355122	
DWG REF. 35-14N-03E		SHEET 5 / 7	
CLARENCE W. "MAC" MCALISTER, PE, PS			

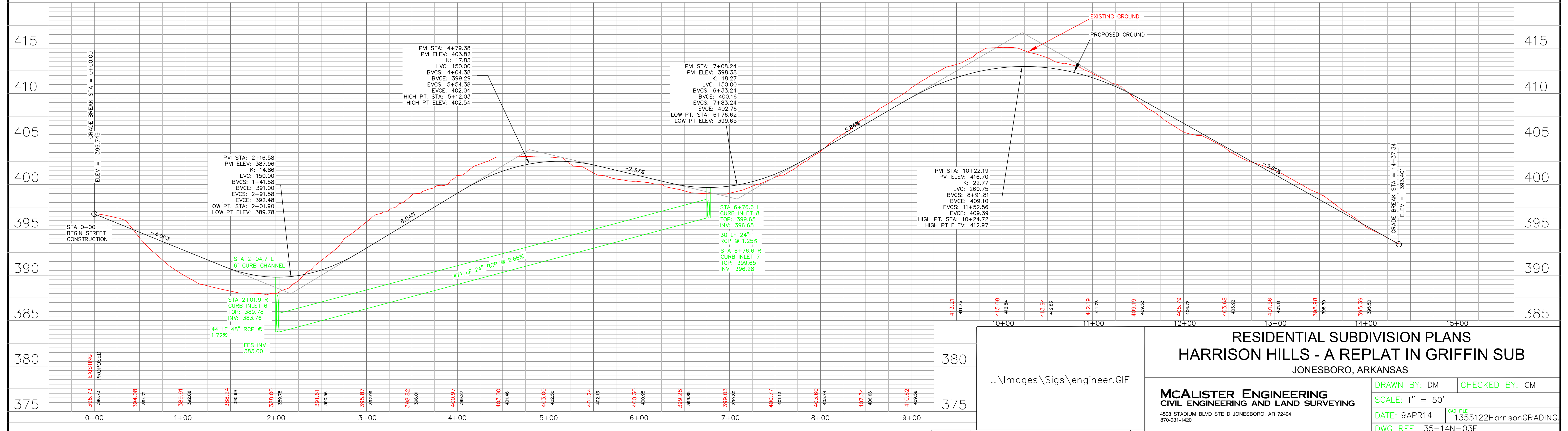


- NOTES**
1. SURVEY FOR BOB HARRISON
 2. GPS CONTROL - TIED SITE TO CITY OF JONESBORO GPS MONUMENT 65 & 66.
 3. HORIZONTAL CONTROL - NAD83, THIRD ORDER CLASS 1, ARKANSAS SPC NORTH ZONE
 4. VERTICAL CONTROL - NAVD 88, THIRD ORDER VERTICAL
 5. OWNER INFORMATION: BOB HARRISON, BOB HARRISON CONSTRUCTION PO BOX 19118, JONESBORO AR 72403
ENGINEER INFORMATION: MCALISTER ENGINEERING, 4508 STADIUM BLVD STE D, JONESBORO, AR 72404
 6. PROPERTY NOT LOCATED IN THE 100 YEAR FLOODPLAIN AS SHOWN BY FLOOD INSURANCE RATE MAP NUMBER 050048 PANEL 131C DATED SEPTEMBER 27, 1991
 7. PLACE CONSTRUCTION ENTRANCE/EXIT TO CONTROL TRACKING OF SEDIMENT ONTO ROADWAYS. STABILIZE ANY CUT SLOPES IMMEDIATELY WITH SEEDING, SPRIGGING, SOODING, OR OTHER APPROVED METHOD UPON COMPLETION TO PREVENT EROSION.
 8. ALL DRAINAGE STRUCTURES SHALL BE BUILT IN ACCORDANCE WITH THE CITY OF JONESBORO, CRAIGHEAD COUNTY, ARKANSAS STORMWATER DRAINAGE DESIGN MANUAL.
 9. SOIL TYPE: MEMPHIS SILT LOAM, 12 TO 40% SLOPES (TYPE B)/ LORING SILT LOAM, 8-12% SLOPES (TYPE C)
 10. MINIMUM REQUIRED ZONING SETBACKS: RESIDENTIAL (R1) - STREET SETBACK - 25'
SIDE SETBACK - 7.5'
REAR SETBACK - 25'
 11. BILL OF ASSURANCE TO INCLUDE FORMATION OF PROPERTY OWNER'S ASSOCIATION TO MAINTAIN COMMON AREAS
- REFERENCE DOCUMENTS:**
1. PLAT OF GRIFFIN SUBDIVISION FILED IN PLAT BOOK 158 AT PAGE 52 IN THE OFFICE OF THE CIRCUIT CLERK FOR CRAIGHEAD COUNTY IN JONESBORO, ARKANSAS.

- LEGEND**
- EXISTING CONTOUR
 - FINISH CONTOUR
 - DIRECTION OF FLOW
 - SURFACE FLOW
 - FLARED END SECTION
 - PROPOSED CURB INLET
 - PROPOSED SEWER LINE W MANHOLE
 - PROPOSED WATER LINE
 - BENCHMARK - 407.16 CURB INLET WEST OF HARRISON HILLS DRIVE ON NEELY ROAD



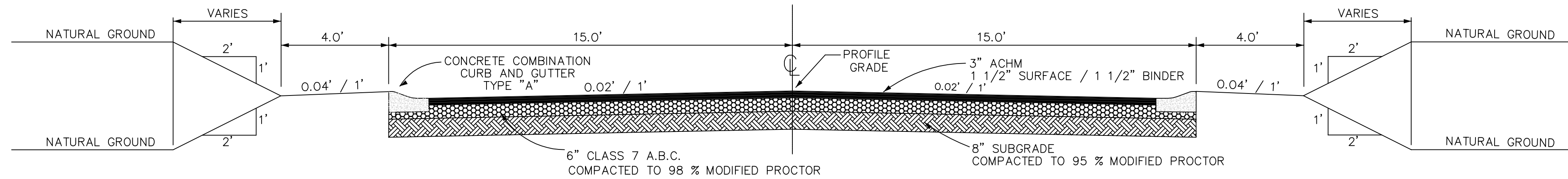
PLAN AND PROFILE - SERENITY HILLS DRIVE



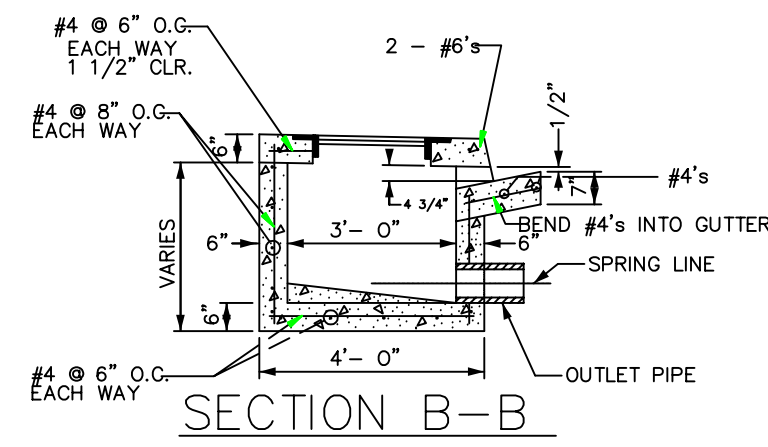
SCALE : HORIZONTAL SCALE: 1" = 50'
VERTICAL SCALE: 1" = 5'

RESIDENTIAL SUBDIVISION PLANS
HARRISON HILLS - A REPLAT IN GRIFFIN SUB
JONESBORO, ARKANSAS

MCALISTER ENGINEERING CIVIL ENGINEERING AND LAND SURVEYING 4508 STADIUM BLVD STE D JONESBORO, AR 72404 870-931-1420		DRAWN BY: DM CHECKED BY: CM SCALE: 1" = 50' DATE: 9APR14 DWG REF: 35-14N-03E PROJECT 1355122
CLARENCE W. "MAC" MCALISTER, PE, PS		SHEET 6 / 7

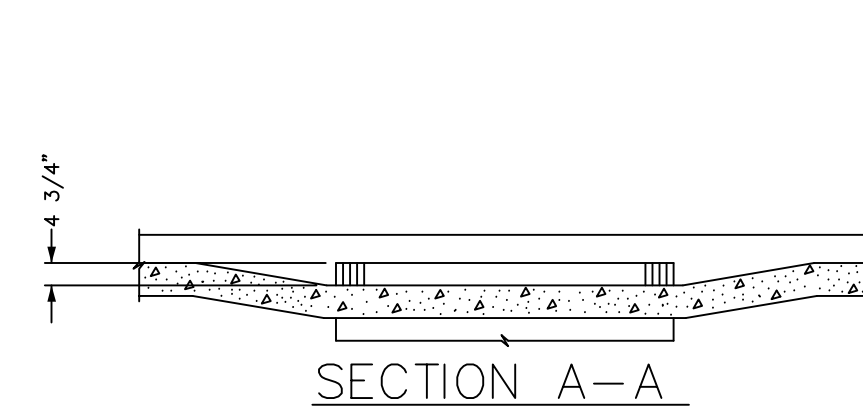


TYPICAL STREET SECTION



NOTES:

1. ALIGN TOP SLAB, CURB AND GUTTER WITH THE ADJACENT CURB AND GUTTER.
2. SLOPE INLET BOTTOM FROM PIPE SPRING LINE TO INVERT - AS SHOWN.
3. OUTLET PIPE MAY BE RELOCATED.



DROP INLET TYPE "C" - DETAIL

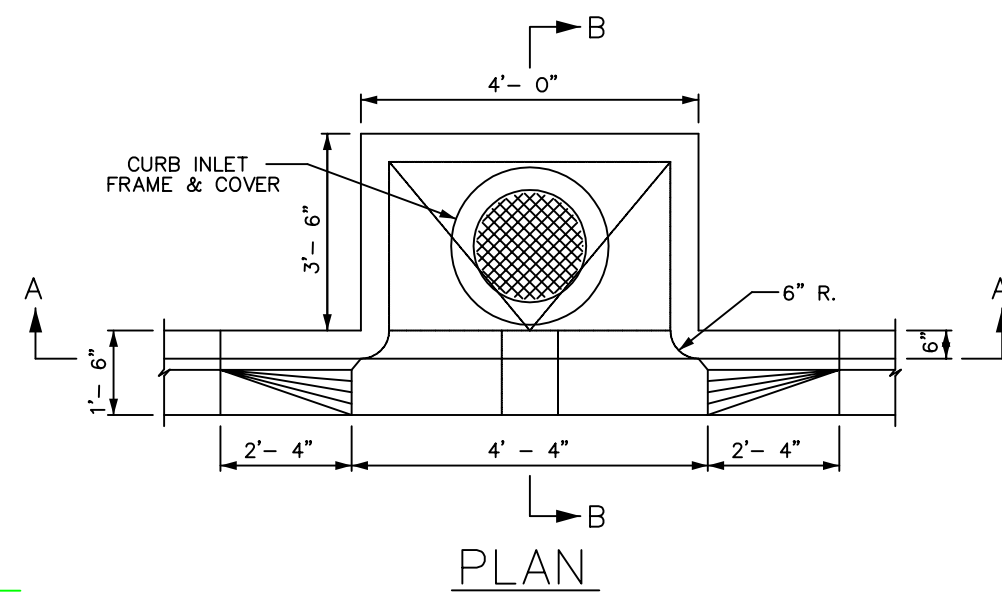
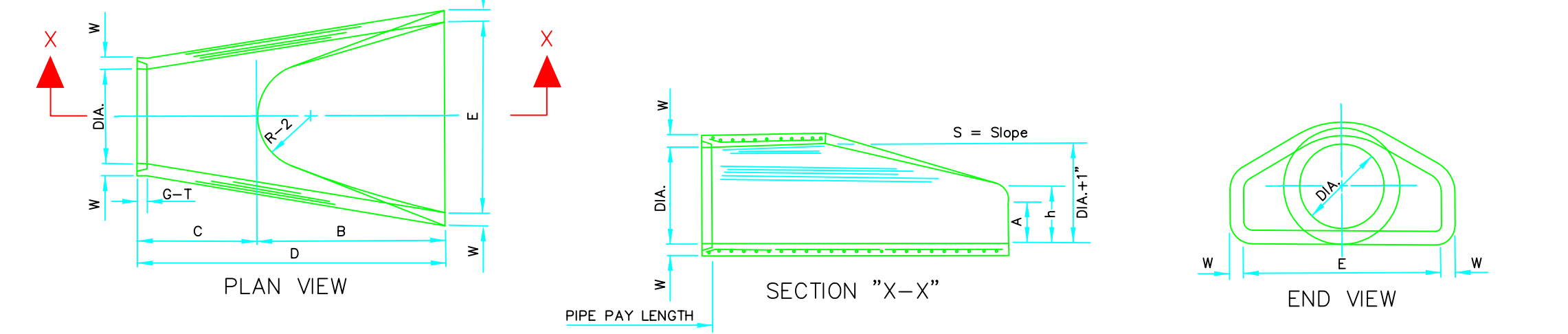


TABLE OF DIMENSIONS

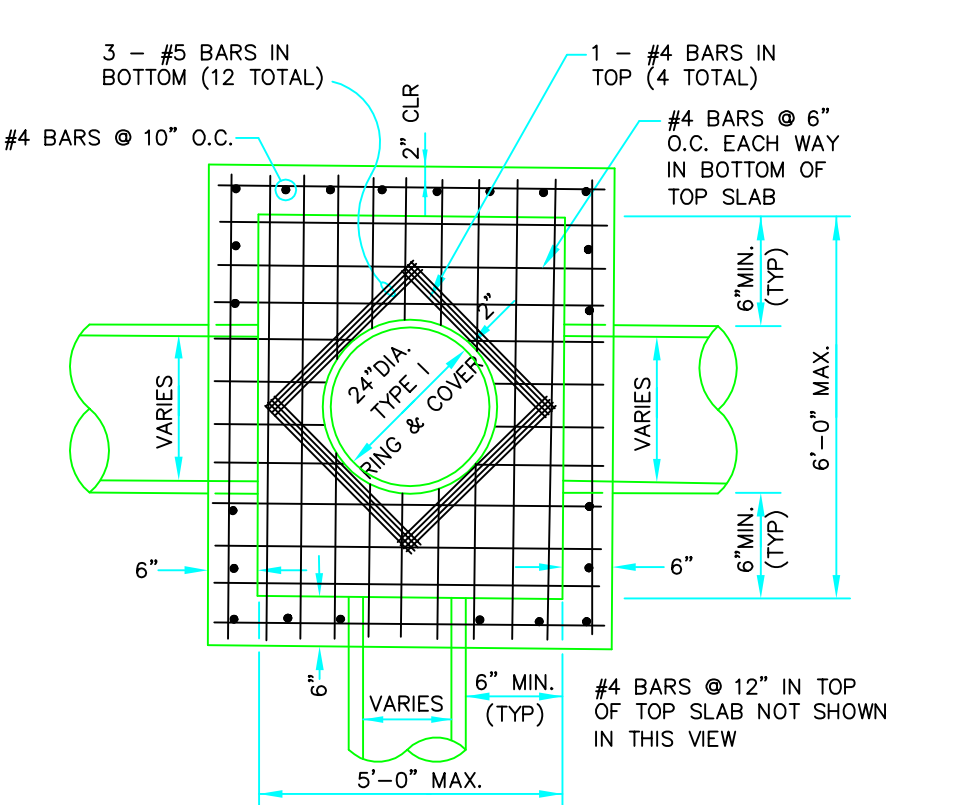
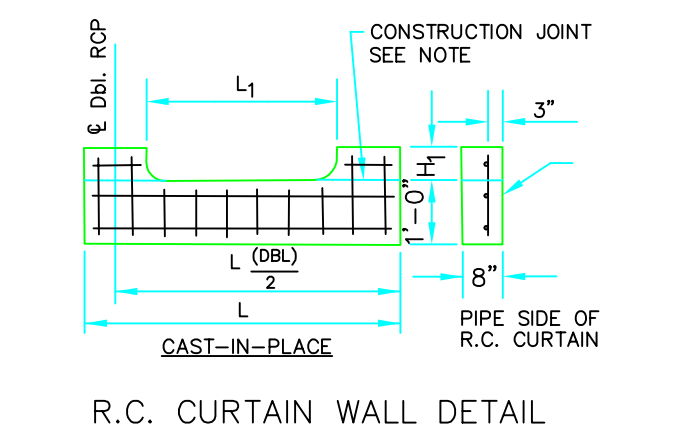
DIA.	WALL	A	B	C	D	E	S	DIA.+1"	P	R-1	R-2	G-T	WT	h
18"	2 1/2"	9"	2'-3"	3'-10"	6'-1"	3'-0"	3:1	19"	29"	15 13/16"	12"	2"	1000	1'-0 1/2"
24"	3"	9 1/2"	3'-1 1/2"	3'-6"	6'-1 1/2"	4'-0"	3:1	25"	33 3/16"	16 13/16"	14"	2 1/2"	1600	1'-1 1/2"
30"	3 1/2"	11"	4'-6"	4'-6"	1'-7 3/4"	5'-0"	3:1	31"	37"	18 1/2"	15"	3 1/4"	1940	1'-4 3/8"
36"	4"	1'-3"	5'-3"	2'-10 3/4"	8'-1 3/4"	6'-0"	3:1	37"	47 13/16"	24 5/16"	20"	3 1/2"	4100	1'-8"
42"	4 1/2"	1'-8"	5'-3"	2'-11"	8'-2"	6'-6"	3:1	43"	53 7/8"	27 1/2"	22"	3 1/2"	5380	2'-2 1/2"
48"	5"	2'-0"	6'-0"	2'-2"	8'-2"	7'-0"	3:1	49"	56 1/2"	28 1/2"	22"	3 1/2"	6950	2'-4"
54"	5 1/2"	2'-4"	6'-6"	1'-10"	8'-4"	7'-6"	3:1	55"	65 1/2"	33 1/8"	24"	4"	8750	2'-10 1/2"
60"	6"	2'-10"	6'-6"	1'-10"	8'-4"	8'-0"	3:1	61"	72 1/2"	36 11/16"	24"	4"	9270	3'-5"
72"	7"	3'-10"	6'-6"	1'-10"	8'-4"	9'-0"	3:1	73"	77 13/16"	38 15/16"	24"	5"	13950	4'-8"



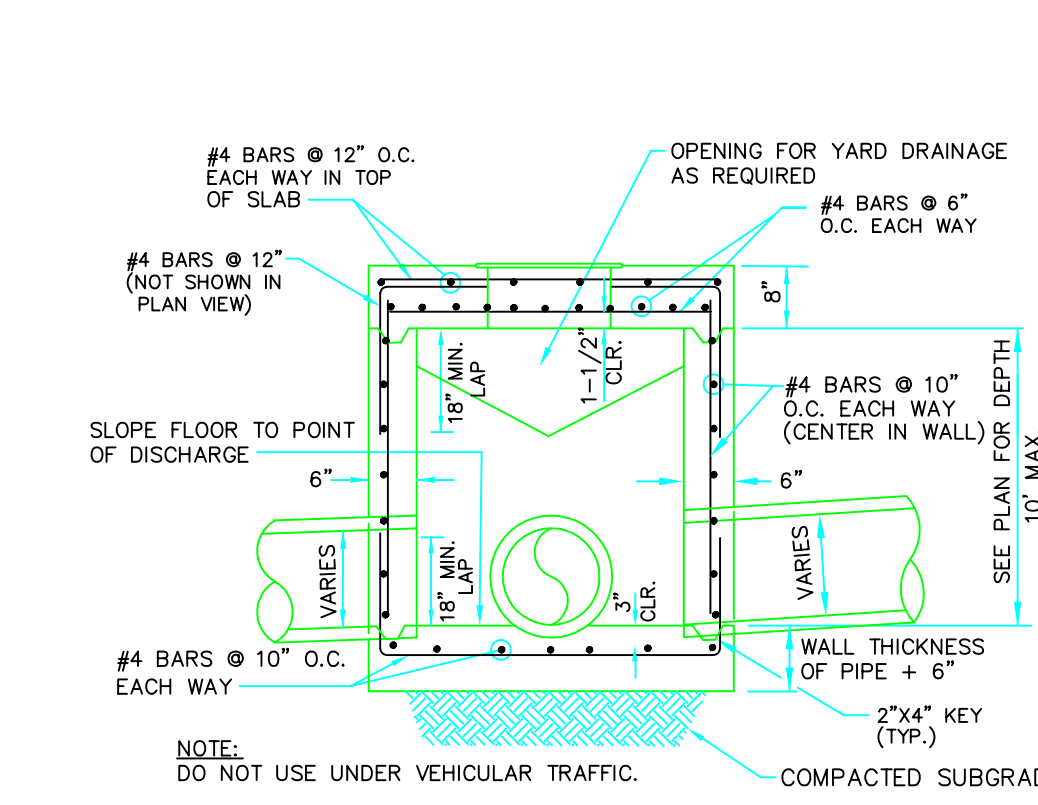
NOTES:

1. The portion of the R.C. Curtain Wall beneath the Flared End Section (Lower 1'-0") shall be placed monolithically. The Flared End Section shall then be set in place and the remaining portions of the R.C. Curtain Wall placed.
2. All reinforcing steel are #4 Bars at 6" O.C.
3. No separate payment will be made for the Curtain Walls. They shall be considered subsidiary to the Flared End Sections.
4. Tongue End On Upstream Section. Groove End On Downstream Section.

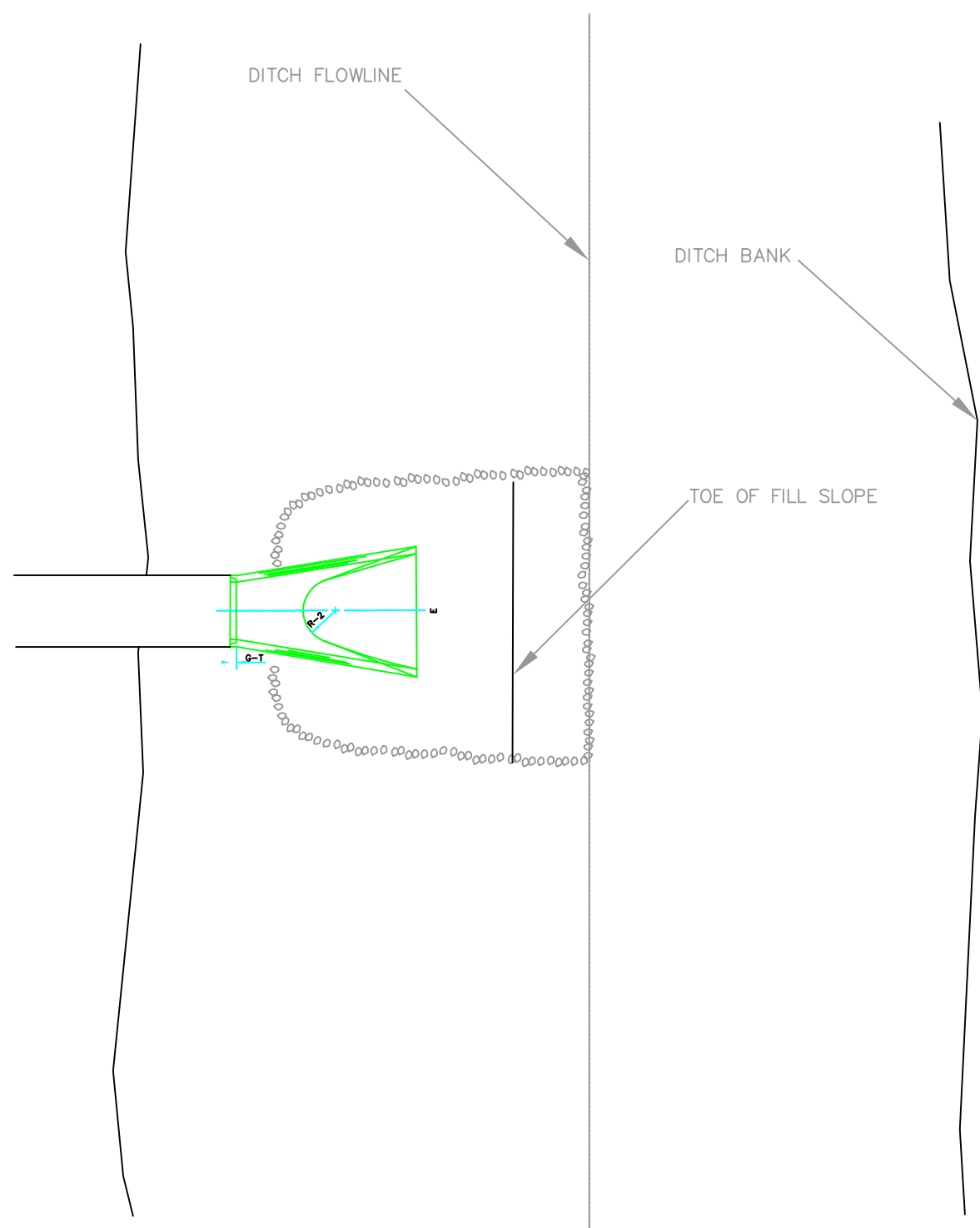
FLARED END SECTION DETAILS FOR REINFORCED CONCRETE PIPE CULVERT



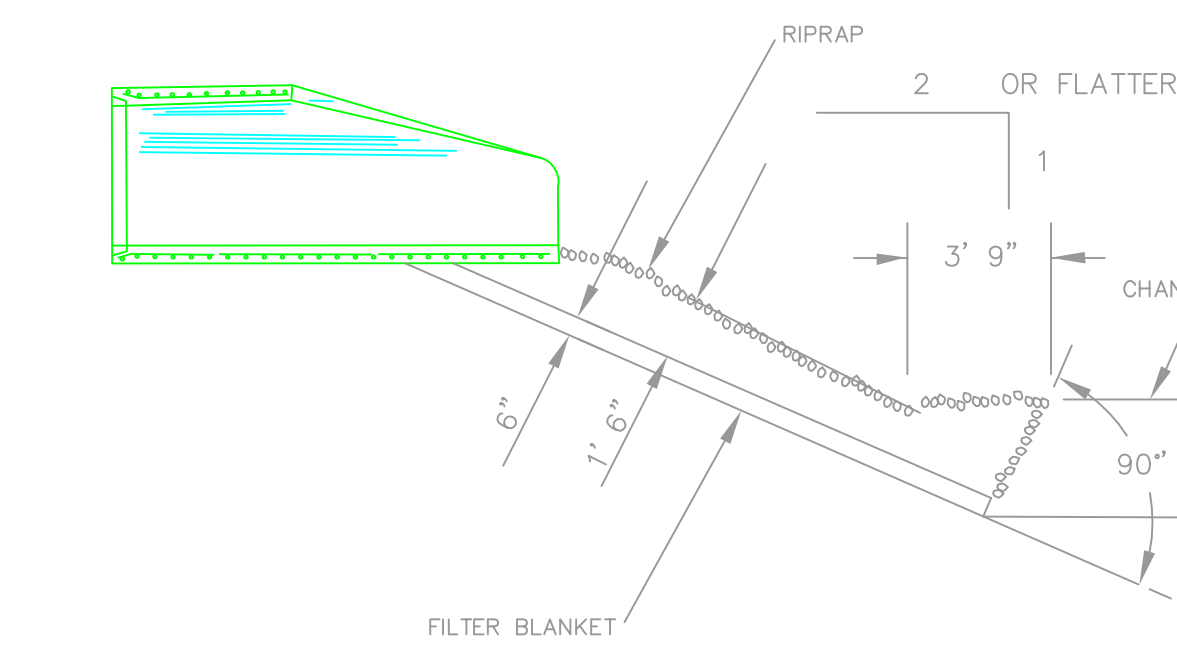
PLAN - JUNCTION BOX - LIGHT



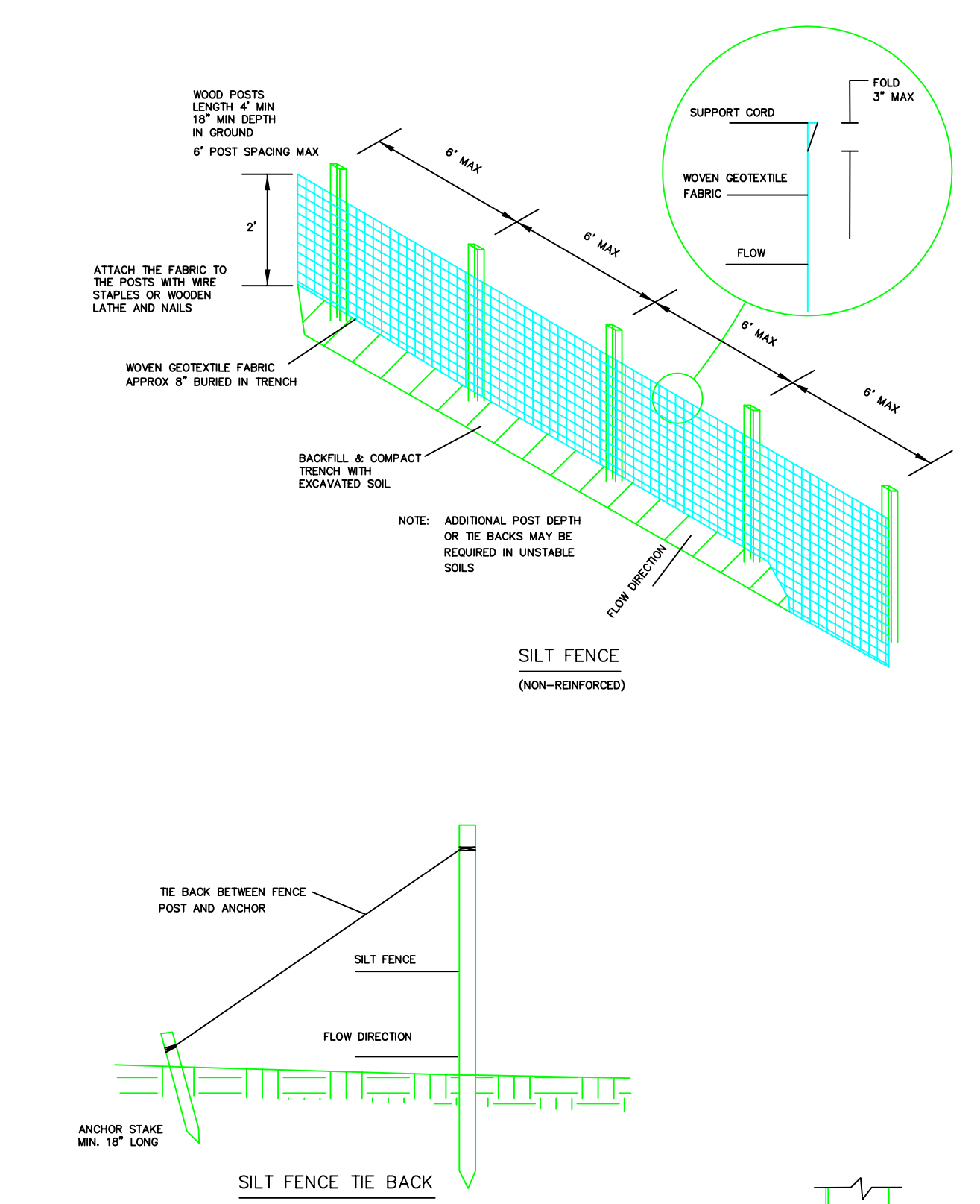
SECTION - JUNCTION BOX - LIGHT



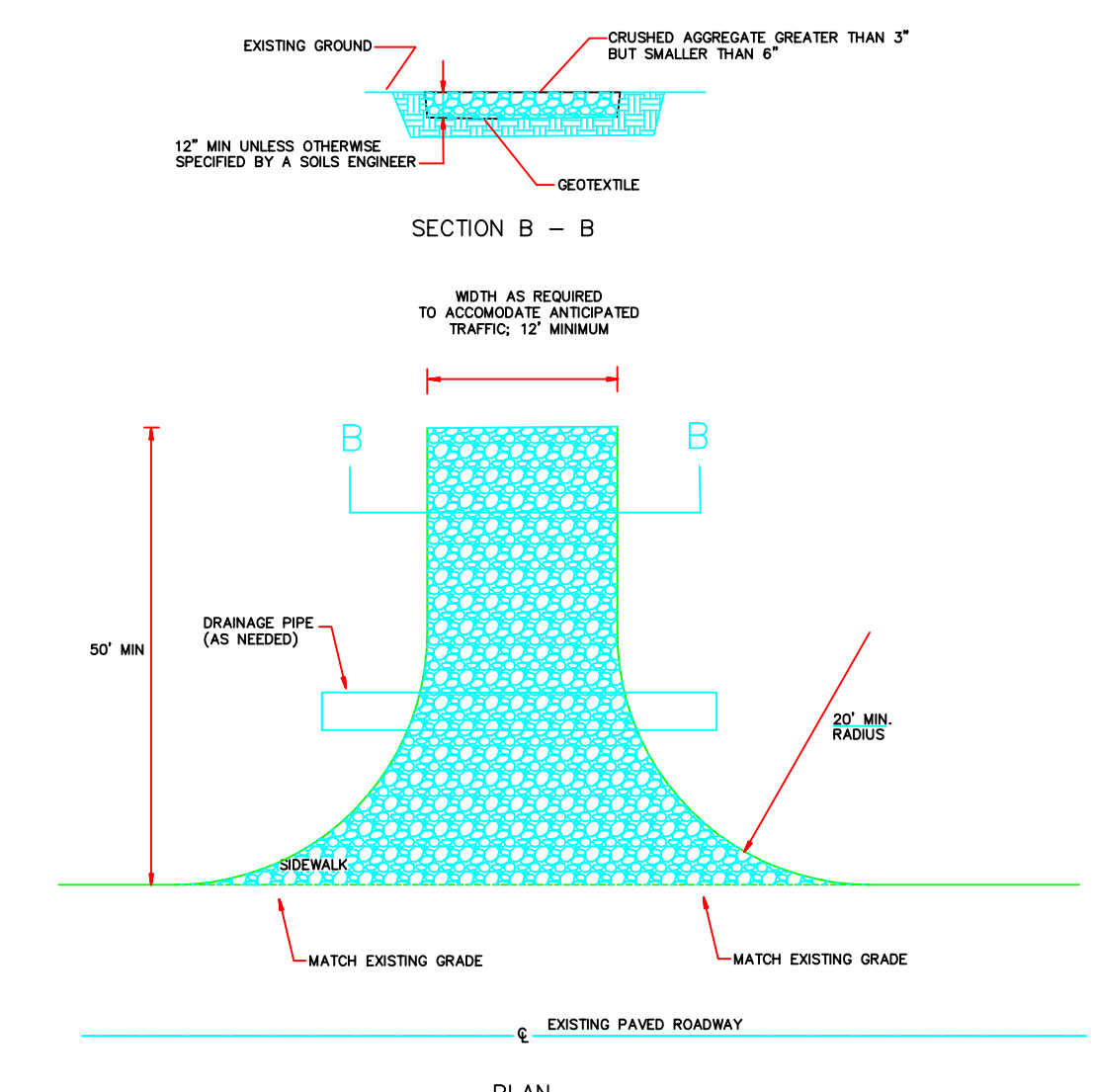
PLAN - DUMPED RIPRAP



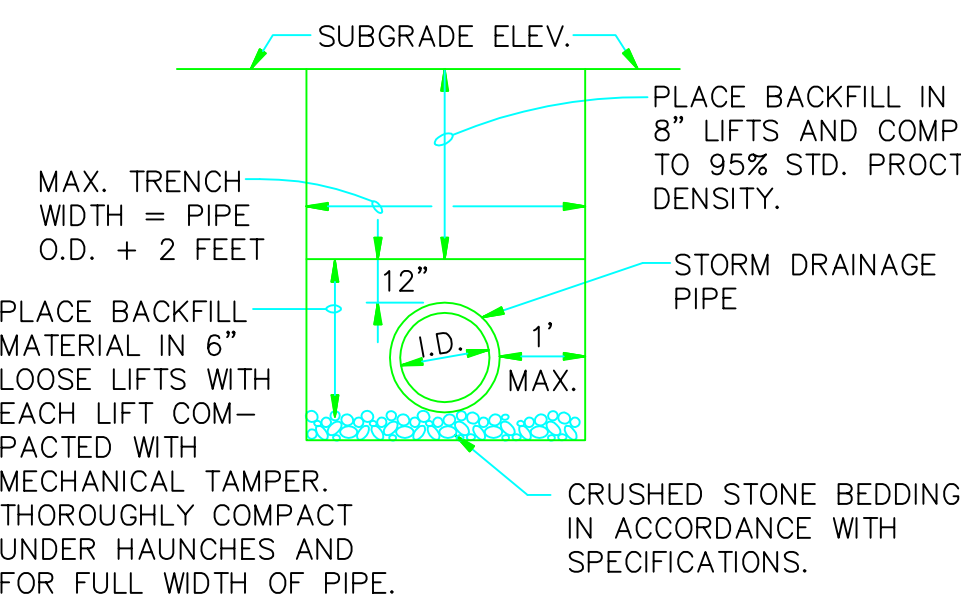
SECTION - DUMPED RIPRAP



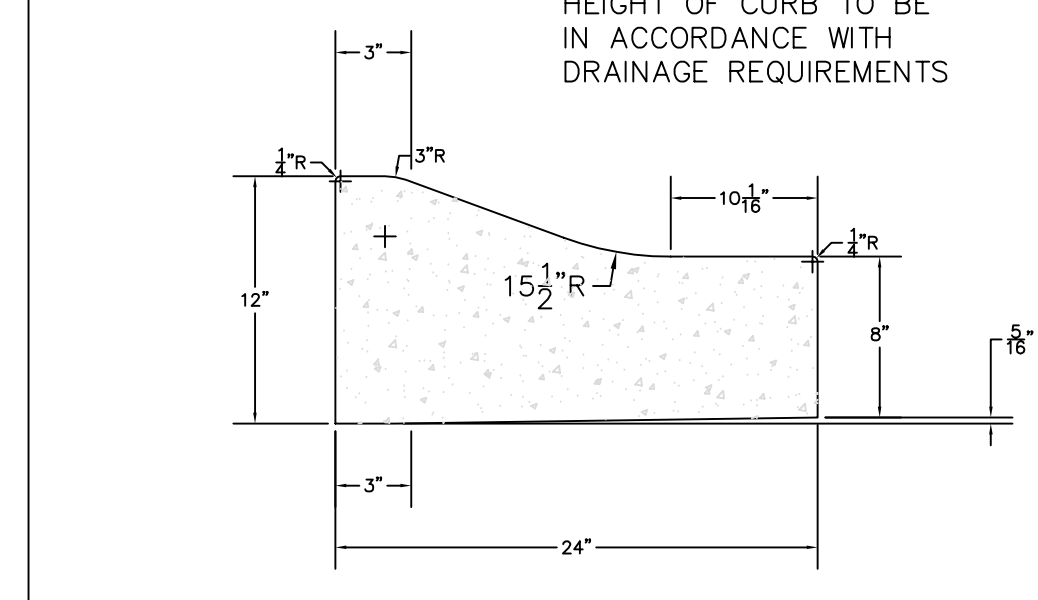
SILT FENCE



STABILIZED CONSTRUCTION ENTRANCE/EXIT



DRAINAGE PIPE TRENCH DETAIL



COMBINATION CURB AND GUTTER

RESIDENTIAL SUBDIVISION PLANS
HARRISON HILLS - A REPLAT IN GRIFFIN SUB
JONESBORO, ARKANSAS

MCALISTER ENGINEERING
CIVIL ENGINEERING AND LAND SURVEYING
4508 STADIUM BLVD STE D JONESBORO, AR 72404
870-331-1420

DRAWN BY: DM	CHECKED BY: CM
SCALE:	
DATE: 10MAR14	CAD FILE: 1355122HarrisonGRADING.
DWG REF.:	
JOB NO.: 1355122	SHEET: 7 / 7
PROJECT: 1355122	

CLARENCE W. "MAC" MCALISTER, PE, PS