

ALTERNATE INSTALLATION:
FIBER ROLLS (WATTLES) MAY BE
SUBSTITUTED TO PREVENT SITE
FLOODING FROM OCCURRING.
AS DEEMED NECESSARY BY CONTRACTOR.



PERSPECTIVE VIEW



ELEVATION OF STAKE AND
FABRIC ORIENTATION



PERSPECTIVE VIEW

FILTER FABRIC INLET PROTECTION

NOT TO SCALE



NOTES:

1. EROSION CONTROL LOG CONTAINMENT MESH SHALL BE 100% BIODEGRADABLE, PHOTODEGRADABLE OR RECYCLABLE; AND FILL MATERIAL SHALL CONSIST OF MULCH, ASPEN EXCELSIOR FIBERS, CHIPPED SITE VEGETATION, COCONUT FIBERS, 100% RECYCLABLE FIBERS, OR ANY OTHER ACCEPTABLE MATERIAL EXCLUDING STRAW AND HAY.
2. DAILY INSPECTION SHALL BE MADE BY THE CONTRACTOR AND SILT ACCUMULATION MUST BE REMOVED WHEN DEPTH REACHES 50% CAPACITY.
3. CONTRACTOR SHALL MONITOR THE PERFORMANCE OF INLET PROTECTION DURING EACH RAINFALL EVENT AND IMMEDIATELY CLEAN THE INLET PROTECTION IF EXCESSIVE PONDING OCCURS.
4. INLET PROTECTIONS SHALL BE REMOVED AS SOON AS THE SOURCE OF SEDIMENT IS STABILIZED.

FIBER ROLL (WATTLE) INLET PROTECTION

NOT TO SCALE



*20' MIN. FOR SINGLE FAMILY AND DUPLEX RESIDENTIAL

NOTES:

1. THE ENTRANCE SHALL BE MAINTAINED IN A CONDITION THAT WILL PREVENT TRACKING OR FLOWING OF SEDIMENT ONTO PUBLIC RIGHT-OF-WAYS. THIS MAY REQUIRE TOP DRESSING, REPAIR AND/OR CLEAN OUT OF ANY MEASURES USED TO TRAP SEDIMENT.
2. WHEN NECESSARY, WHEELS SHALL BE CLEANED PRIOR TO ENTRANCE ONTO PUBLIC RIGHT-OF-WAY.
3. WHEN WASHING IS REQUIRED, IT SHALL BE DONE ON AN AREA STABILIZED WITH CRUSHED STONE THAT DRAINS INTO AN APPROVED SEDIMENT TRAP OR SEDIMENT BASIN.
4. WHERE RUNOFF CONTAINING SEDIMENT-LADEN WATER IS LEAVING THE SITE VIA THE CONSTRUCTION ENTRANCE, OTHER MEASURES SHALL BE IMPLEMENTED TO DIVERT RUNOFF THROUGH AN APPROVED FILTERING SYSTEM.
5. DIMENSIONS:
SINGLE FAMILY AND DUPLEX
20' LONG BY 20' WIDE, 3-6\"/>

CONSTRUCTION ENTRANCE

NOT TO SCALE



NOTES:

1. EROSION CONTROL LOG CONTAINMENT MESH SHALL BE 100% BIODEGRADABLE, PHOTODEGRADABLE OR RECYCLABLE; AND FILL MATERIAL SHALL CONSIST OF MULCH, ASPEN EXCELSIOR FIBERS, CHIPPED SITE VEGETATION, COCONUT FIBERS, 100% RECYCLABLE FIBERS, OR ANY OTHER ACCEPTABLE MATERIAL EXCLUDING STRAW AND HAY.
2. DAILY INSPECTION SHALL BE MADE BY THE CONTRACTOR AND SILT ACCUMULATION MUST BE REMOVED WHEN DEPTH REACHES 50% CAPACITY.
3. CONTRACTOR SHALL MONITOR THE PERFORMANCE OF INLET PROTECTION DURING EACH RAINFALL EVENT AND IMMEDIATELY REMOVE THE INLET PROTECTIONS IF THE STORM WATER BEGINS TO OVERTOP THE CURB.
4. INLET PROTECTIONS SHALL BE REMOVED AS SOON AS THE SOURCE OF SEDIMENT IS STABILIZED.

FIBER ROLL (WATTLE) CURB INLET PROTECTION

NOT TO SCALE



TYPICAL FIBER ROLL INSTALLATION



SECTION VIEW

FIBER ROLLS AND WATTLES

NOT TO SCALE



SEDIMENT BASIN w/ FAIRCLOTH SKIMMER

NOT TO SCALE



CROSS SECTION

PROFILE

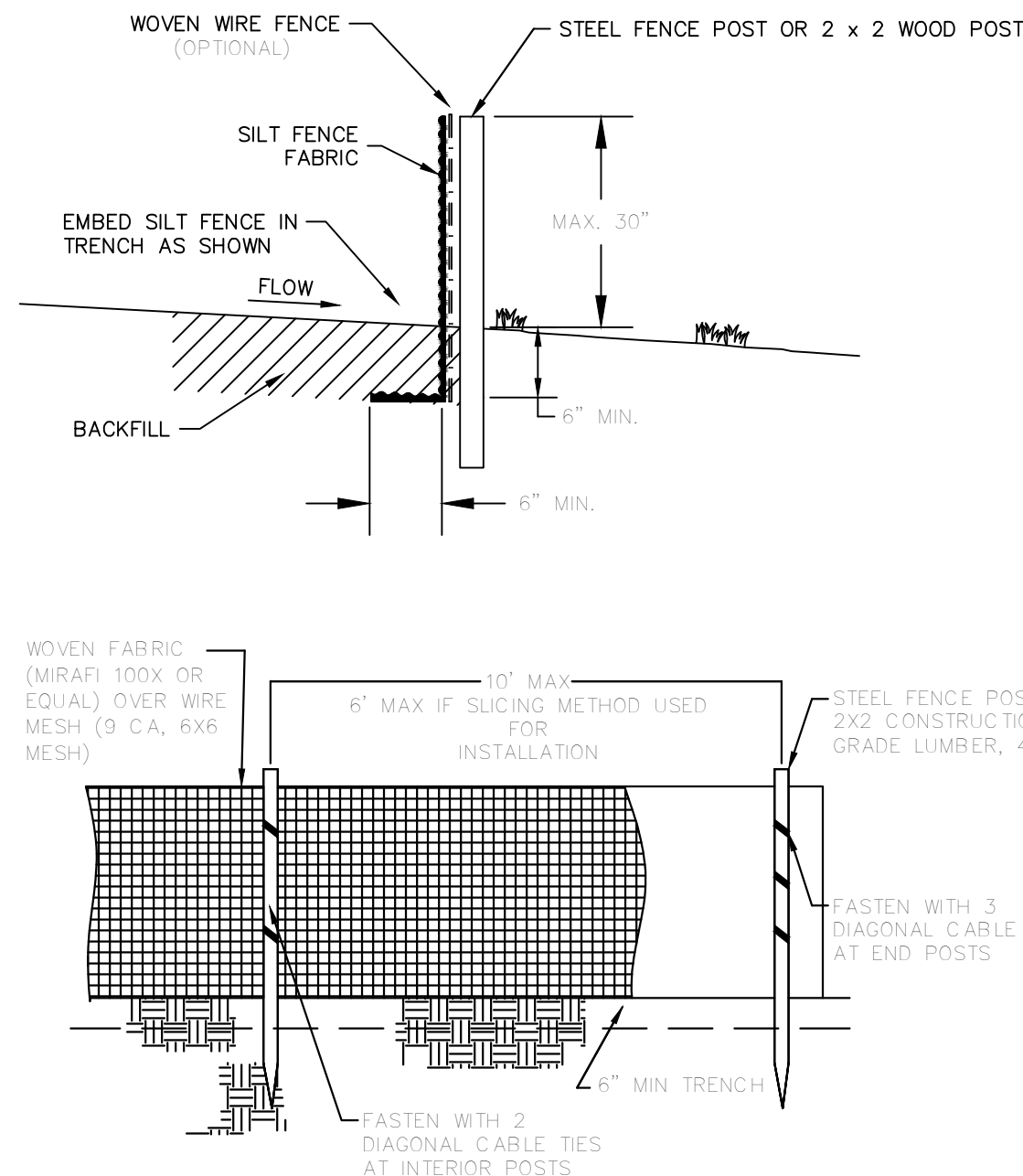
CROSS SECTION

PROFILE

- NOTES:
1. NUMBER OF BAGS AND ARRANGEMENT MAY VARY WITH ON SITE CONDITIONS

DITCH CHECKS (STONE & SAND BAG)

NOT TO SCALE



NOTES:

1. PLACE SILT FENCE AT DOWNSLOPE LIMIT OF AREA TO BE GRADED.
2. SILT FENCE SHALL BE PLACED ALONG A LEVEL CONTOUR.
3. SEDIMENT TRAPPED BY THIS PRACTICE SHALL BE DISPOSED OF IN AN APPROVED SITE IN A MANNER THAT WILL NOT CONTRIBUTE TO ADDITIONAL SILTATION.
4. SILT FENCE SHOULD BE SECURELY FASTENED TO EACH SUPPORT POST OR TO WOVEN WIRE, WHICH IS IN TURN ATTACHED TO THE STEEL FENCE POSTS.
5. INSPECTION SHALL BE FREQUENT AND REPAIR OR REPLACEMENT SHALL BE MADE PROMPTLY AS NEEDED.
6. SILT FENCE SHALL BE REMOVED WHEN IT HAS SERVED ITS USEFULNESS SO AS NOT TO BLOCK OR IMPEDE STORM FLOW OR DRAINAGE.
7. ACCUMULATED SILT SHALL BE REMOVED WHEN IT REACHES 50% CAPACITY.
8. AT EACH END OF SILT FENCE, TURN FENCE UPSLOPE AND EXTEND UNTIL GROUND SURFACE RISES 18 INCHES.

SILT FENCE

NOT TO SCALE

SARAH CROSSING - PHASE IV

EROSION CONTROL DETAILS



REVISIONS

DATE	BY	DESCRIPTION

DRAWING INFO.

DRAWN BY:	
DATE:	
SCALE:	1"=77'

SHEET NUMBER:

DT-1

MARK MORRIS P.E.
6011 SOUTHWEST DRIVE
JONESBORO, AR 72404
PH: 1-870-919-7700
MARK@MARKMORRISHOMES.COM

MARK MORRIS