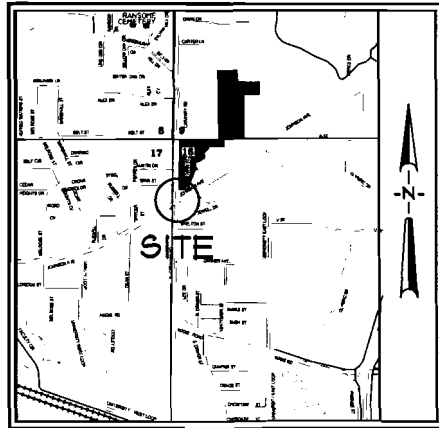


CONSTRUCTION PLANS

**the grove / THE CITY OF JONESBORO**

**JOHNSON AVE. DRAINAGE IMPROVEMENTS**

LYING IN SECTION 16, TOWNSHIP 14 NORTH,  
 RANGE 4 EAST, CRAIGHEAD COUNTY,  
 JONESBORO, ARKANSAS  
 AUGUST, 2007



VICINITY MAP

NOT TO SCALE

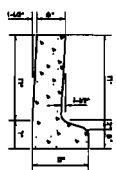
INDEX TO SHEETS

- 1 OF 5 INDEX SHEET
- 2 OF 5 AREA MAP
- 3 OF 5 SITE PLAN
- 4 OF 5 PLAN & PROFILE
- 5 OF 5 DETAILS-STANDARD

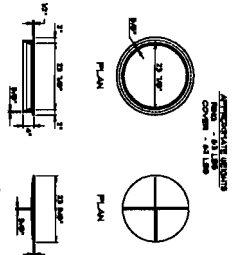


ASSOCIATED ENGINEERING AND TESTING, LLC  
 CIVIL ENGINEERING, LAND SURVEYING AND MATERIALS TESTING  
 879 SOUTH CHURCH STREET - P.O. BOX 1482 - JONESBORO, AR 72403  
 PH: 870-938-5894 FAX: 870-938-3829

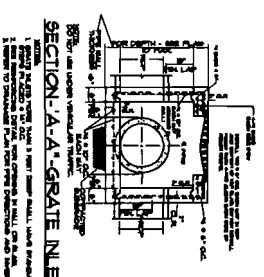
CONSTRUCTION PLANS  
**the grove / CITY OF JONESBORO**  
 JONESBORO, ARKANSAS

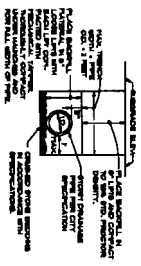
**TYPICAL CURB & GUTTER**  
TYPE "A"  
NOT TO SCALE



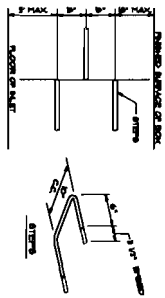
**TYPE I RING AND COVER**



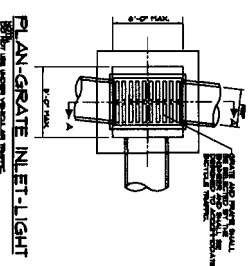
**SECTION A-A - GRATE INLET LIGHT**



**DRAINAGE PIPE TRENCH DETAIL**



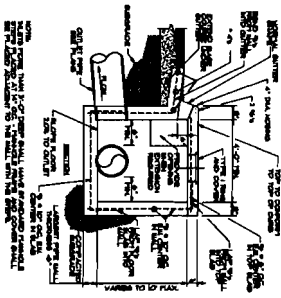
**MANHOLE / INLET STEPS**



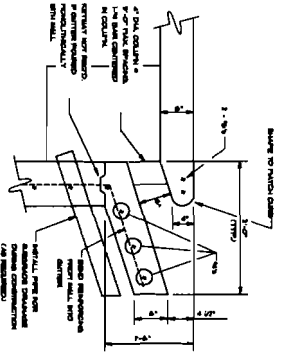
**PLAN - GRATE INLET LIGHT**

- STEP SPECIFICATIONS**
- MANHOLE TO 12" DIA. CONCRETE RINGS AND COVERS
  - MANHOLE TO 12" DIA. CONCRETE RINGS AND COVERS
  - MANHOLE TO 12" DIA. CONCRETE RINGS AND COVERS
  - MANHOLE TO 12" DIA. CONCRETE RINGS AND COVERS

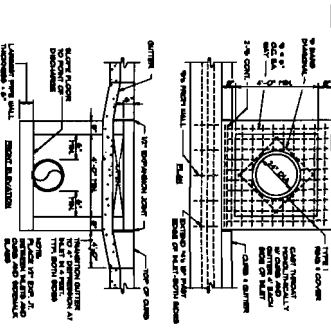
**SECTION - TYPICAL CURB INLET - TYPE "A"**



**CURB OPENING**



**CURB INLET - TYPE "A"**



© September 2007 - 2010

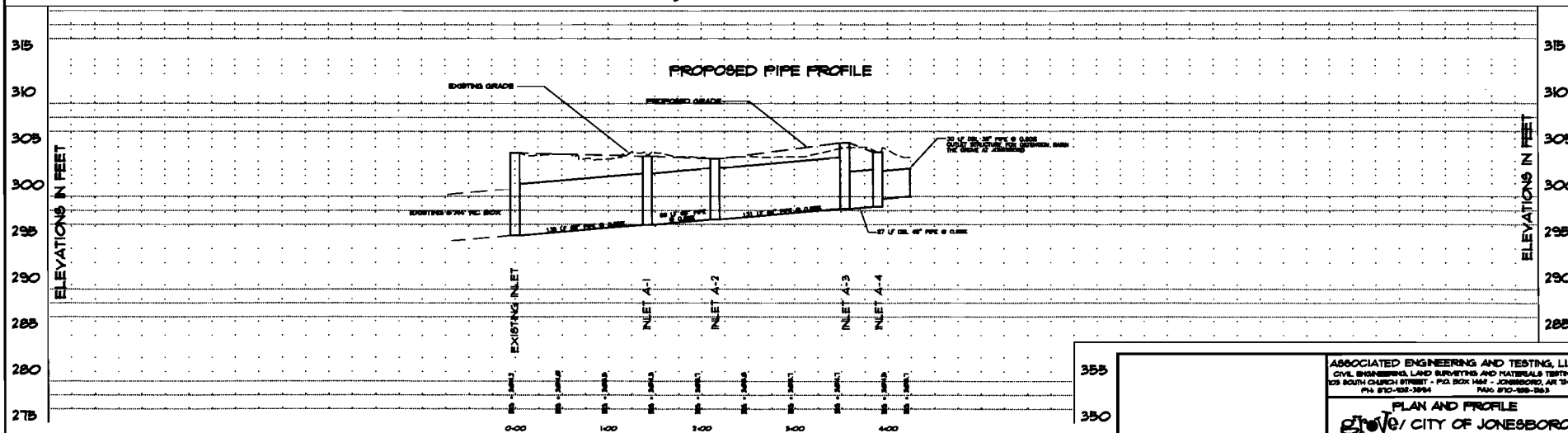
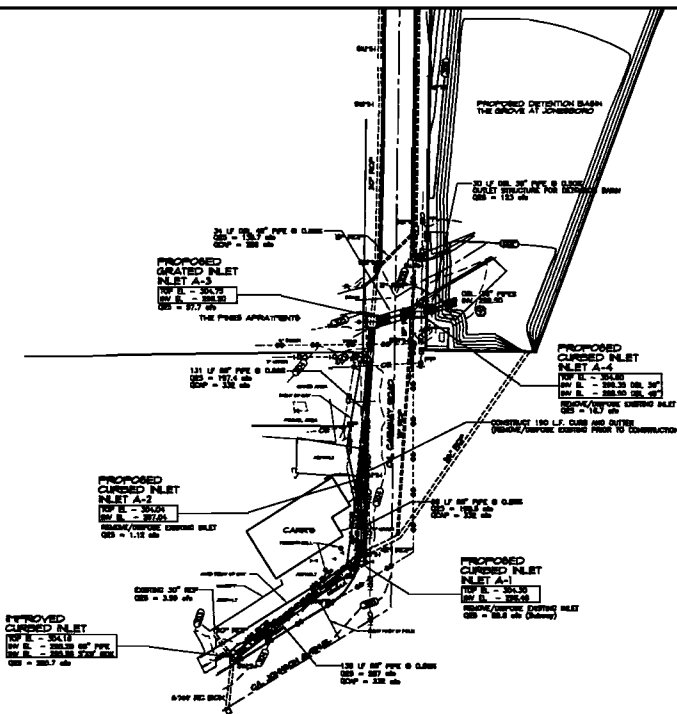
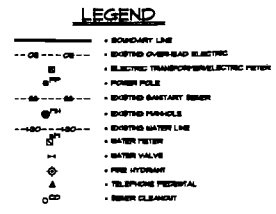
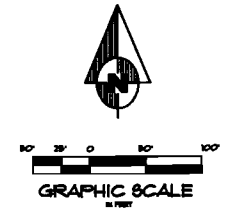
NO.	REVISION	BY	DATE

**ASSOCIATED ENGINEERING AND TESTING, LLC**  
 2100 N. UNIVERSITY AVENUE, SUITE 100  
 JONSBORO, ARIZONA 85920  
 P.O. BOX 1884  
 JONSBORO, ARIZONA 85920  
 P.O. BOX 1884

**DETAILS - STANDARD**  
**2100 N. UNIVERSITY AVENUE, SUITE 100**  
**JONSBORO, ARIZONA 85920**

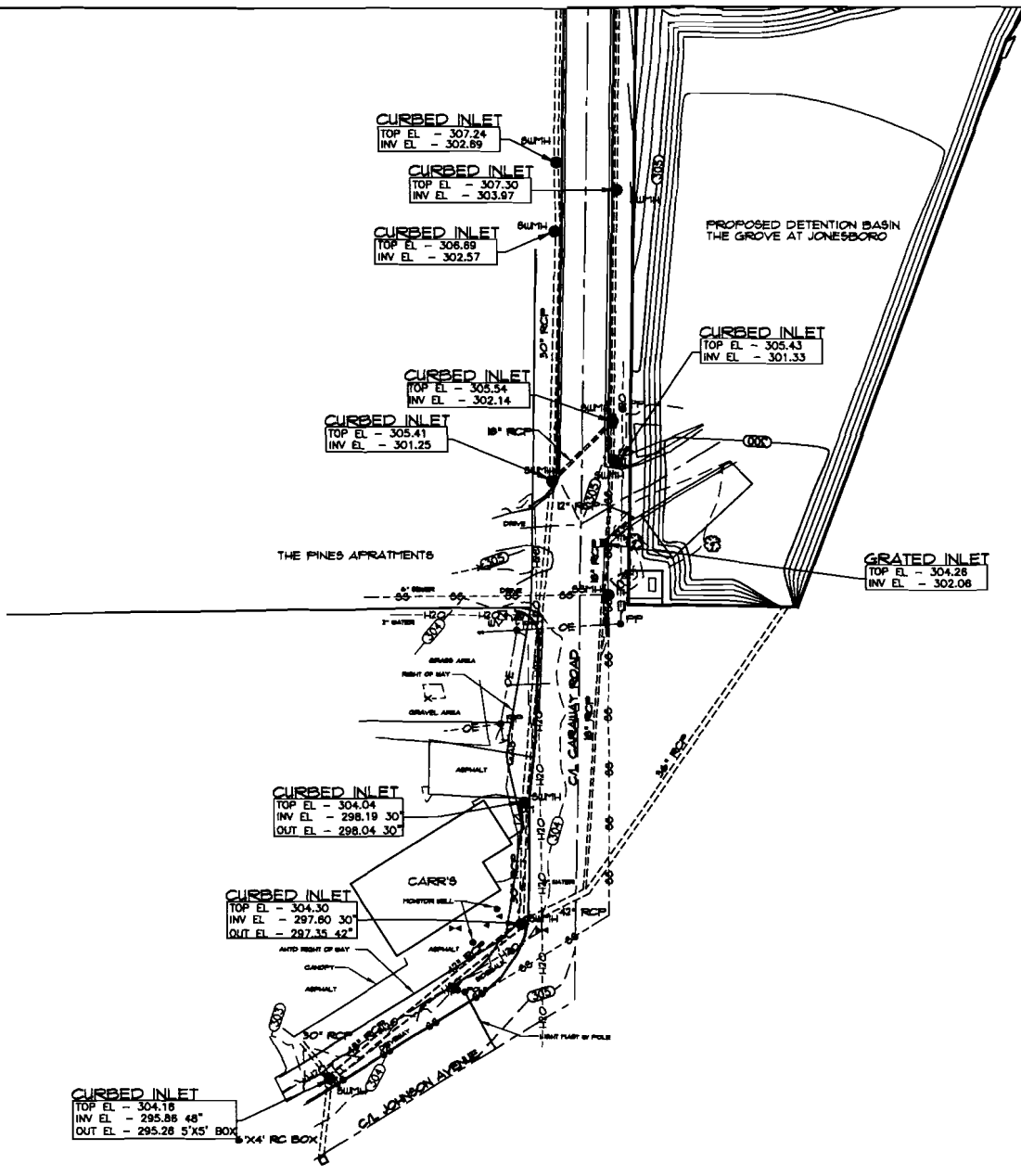
**GENERAL NOTES**

- ELEVATIONS SHOWN HEREON ARE IN FEET AND DECIMAL PARTS THEREOF AND REFER TO P.S. DATA.
- BENCHMARK 1 IS A COTTON PIPER SPINDLE IN NORTH SIDE OF A POWER POLE LOCATED AT THE SOUTHWEST CORNER OF JOHNSON BLVD. & GUNNWAY RD. (NOT SHOWN ON DRAWING) (BLV. 303.1 P.S.)  
BENCHMARK 2 IS A SET COTTON PIPER SPINDLE IN NORTH SIDE OF A 36" DIA. TREE LOCATED NEAR EAST OF NORTH GUNNWAY RD. ON THE SOUTH SIDE OF A GRAVEL ROAD FROM THE TRADING TOWER (BLV. 303.0 P.S.)  
BENCHMARK 3 IS A SET COTTON PIPER SPINDLE IN WEST SIDE OF A 36" DIA. TREE LOCATED APPROXIMATELY 50' WEST OF JOB. IN GRAVEL ROAD LEADING TO TRADING TOWER (BLV. 303.1 P.S.)
- UTILITY LOCATIONS SHOWN ARE APPROPRIATE AND SHOULD BE FIELD VERIFIED PRIOR TO CONSTRUCTION.
- PIPE SHALL BE REINFORCED CONCRETE FOR ALL ROAD CROSSINGS. MULTIPLE PIPE (OR SIGNAL) MAY BE USED IN OTHER APPLICATIONS WITH ENGINEER'S APPROVAL.
- CONTRACTOR SHALL MAINTAIN SAFETY FEATURES THROUGHOUT THE PROJECT. WORK SHALL BE DEMARCADED WITH RED AND WHITE FLAGGING.
- WORK SHALL BE PERFORMED IN ACCORDANCE WITH CURRENT CITY OF JONESBORO SPECIFICATIONS AND THE STANDARD SPECIFICATIONS FOR THE ARKANSAS HIGHWAY AND TRANSPORTATION DEPARTMENT.
- THE CONTRACTOR SHALL PROVIDE ALL NECESSARY PREVENTIVE MEASURES TO SAFEGUARD UTILITIES AND STRUCTURES FROM DAMAGE DURING CONSTRUCTION.
- CONTRACTOR SHALL BARE OUT PAVEMENT PRIOR TO REMOVAL AND TO PROVIDE A SMOOTH SURFACE TO PAVEMENT REPAIR.



ASSOCIATED ENGINEERING AND TESTING, LLC CIVIL ENGINEERS, LAND SURVEYING AND MATERIALS TESTING 103 SOUTH CHURCH STREET - P.O. BOX 1487 - JONESBORO, AR 72401 PH: 870-938-3994 FAX: 870-938-3983			
<b>PLAN AND PROFILE</b> CITY OF JONESBORO JONESBORO, ARKANSAS			
OWNER: CLS	DESIGNER: JFE	DATE: 02/20/21	SHEET: 2 OF 2
SCALE: 1" = 30'	DATE PLS. SUBMITTED: 02/18/2021	DATE: 02/18/2021	BY: JFE

© Copyright 2021 AETLLC DATE: 02/18/2021 BY: JFE



**LEGEND**

- BOUNDARY LINE
- - - OE - - - BOTTLE OVERHEAD ELECTRIC
- E - - - ELECTRIC TRANSFORMER/ELECTRIC METER
- P - - - POWER POLE
- - - S - - - BOTTLED BATTERY BENCH
- ⊙ S - - - BOTTLED BATTERY
- - - W - - - BOTTLED WATER LINE
- ⊕ V - - - WATER VALVE
- ⊕ H - - - FIRE HYDRANT
- ⊕ T - - - TELEPHONE FERRIS
- ⊕ C - - - BENCH CLEANOUT

**GENERAL NOTES**

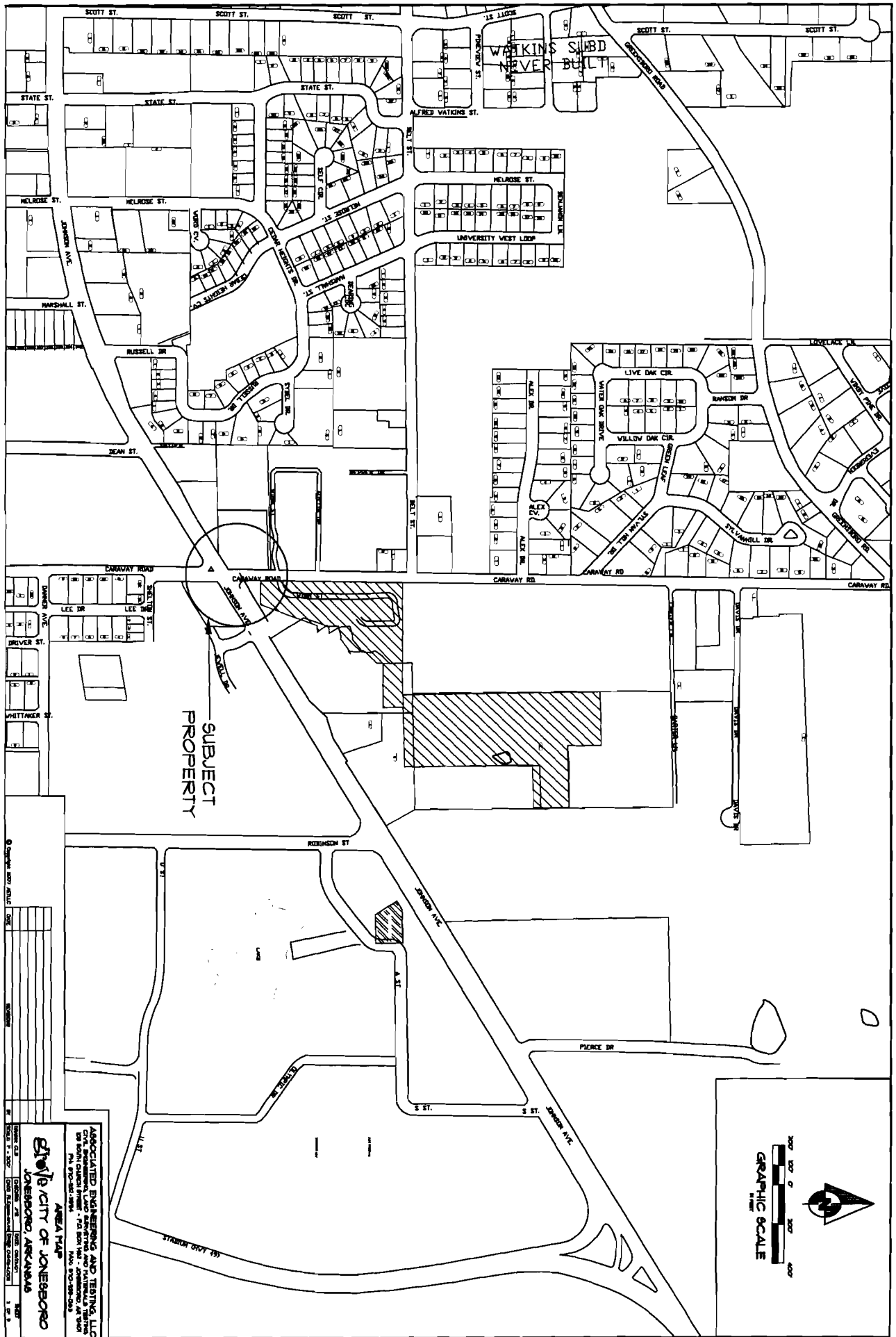
1. ELEVATIONS SHOWN ARE IN FEET AND DECIMAL FRACTIONS THEREOF AND REFER TO MSL, DATUM.
2. BENCHMARK # 4 IS A CONCRETE PIERCE SPINDLE IN NORTH SIDE OF A POWER POLE LOCATED AT THE SOUTHWEST CORNER OF JOHNSON AVENUE AND N CAROLAN RD. (NOT SHOWN ON DRAWING) ELEV. 304.71 (MEL).
3. BENCHMARK # 5 IS A SET COTTON PINNAC SPINDLE IN NORTH SIDE OF A 36" OAK TREE LOCATED 100' EAST OF NORTH CAROLAN RD. ON THE SOUTH SIDE OF A GRAVEL ROAD FROM THE PINES TRACT. ELEV. 303.71 (MEL).
4. BENCHMARK # 6 IS A SET COTTON PINNAC SPINDLE IN WEST SIDE OF A 36" OAK TREE LOCATED APPROXIMATELY 300' WEST OF JOB N BRANWEL ROAD LEADING TO BRADY TOWER. ELEV. 303.71 (MEL).
5. SITE CONDITIONS SHOWN AS OF AUGUST 16, 2011.
6. CARR'S HORTON HILL RIGHT OF WAY BOUNDARY SHOWN BASED ON SURVEY PROVIDED BY DELTA LAND SURVEYING, LLC, DATED MARCH 08, 2008.
7. UTILITY LOCATIONS SHOWN ARE APPROPRIATE AND SHOULD BE FIELD VERIFIED PRIOR TO CONSTRUCTION.

ASSOCIATED ENGINEERING AND TESTING, LLC  
 CIVIL ENGINEERING, LAND SURVEYING AND MATERIALS TESTING  
 805 SOUTH CHURCH STREET - P.O. BOX 1462 - JONESBORO, AR 72403  
 PH: 870-938-3994 FAX: 870-938-3943

EXISTING LAYOUT  
**THE GROVE / CITY OF JONESBORO**  
 JONESBORO, ARKANSAS

NO.	DATE	BY	REVISION

DESIGN: CLB  
 CHECKED: JFE  
 DATE: 08/20/11  
 SCALE: 1" = 30'  
 DRAWN FILE: 080801  
 SHEET: 1 OF 1



SUBJECT  
PROPERTY



ASSOCIATED ENGINEERING AND TESTING, LLC  
 6701 SHREVEPORT LANE, SUITE 200, LITTLE ROCK, AR 72209  
 501-782-1111  
 501-782-1112  
 501-782-1113  
 501-782-1114  
 501-782-1115  
 501-782-1116  
 501-782-1117  
 501-782-1118  
 501-782-1119  
 501-782-1120  
 501-782-1121  
 501-782-1122  
 501-782-1123  
 501-782-1124  
 501-782-1125  
 501-782-1126  
 501-782-1127  
 501-782-1128  
 501-782-1129  
 501-782-1130  
 501-782-1131  
 501-782-1132  
 501-782-1133  
 501-782-1134  
 501-782-1135  
 501-782-1136  
 501-782-1137  
 501-782-1138  
 501-782-1139  
 501-782-1140  
 501-782-1141  
 501-782-1142  
 501-782-1143  
 501-782-1144  
 501-782-1145  
 501-782-1146  
 501-782-1147  
 501-782-1148  
 501-782-1149  
 501-782-1150  
 501-782-1151  
 501-782-1152  
 501-782-1153  
 501-782-1154  
 501-782-1155  
 501-782-1156  
 501-782-1157  
 501-782-1158  
 501-782-1159  
 501-782-1160  
 501-782-1161  
 501-782-1162  
 501-782-1163  
 501-782-1164  
 501-782-1165  
 501-782-1166  
 501-782-1167  
 501-782-1168  
 501-782-1169  
 501-782-1170  
 501-782-1171  
 501-782-1172  
 501-782-1173  
 501-782-1174  
 501-782-1175  
 501-782-1176  
 501-782-1177  
 501-782-1178  
 501-782-1179  
 501-782-1180  
 501-782-1181  
 501-782-1182  
 501-782-1183  
 501-782-1184  
 501-782-1185  
 501-782-1186  
 501-782-1187  
 501-782-1188  
 501-782-1189  
 501-782-1190  
 501-782-1191  
 501-782-1192  
 501-782-1193  
 501-782-1194  
 501-782-1195  
 501-782-1196  
 501-782-1197  
 501-782-1198  
 501-782-1199  
 501-782-1200