
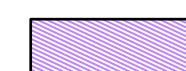

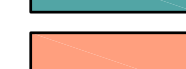
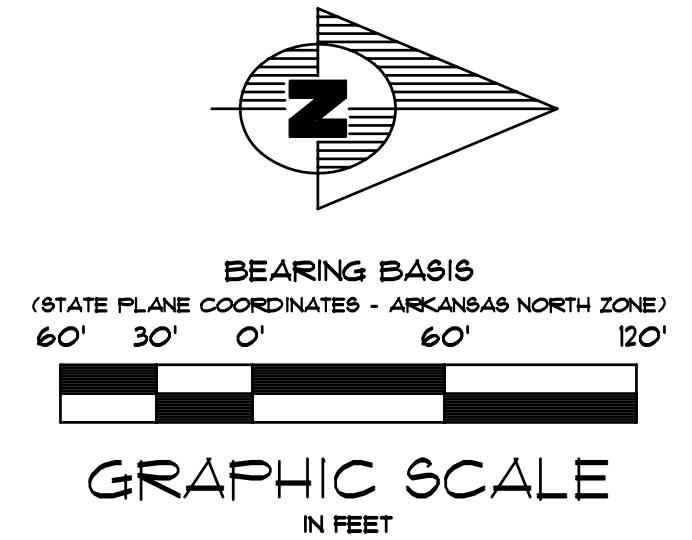
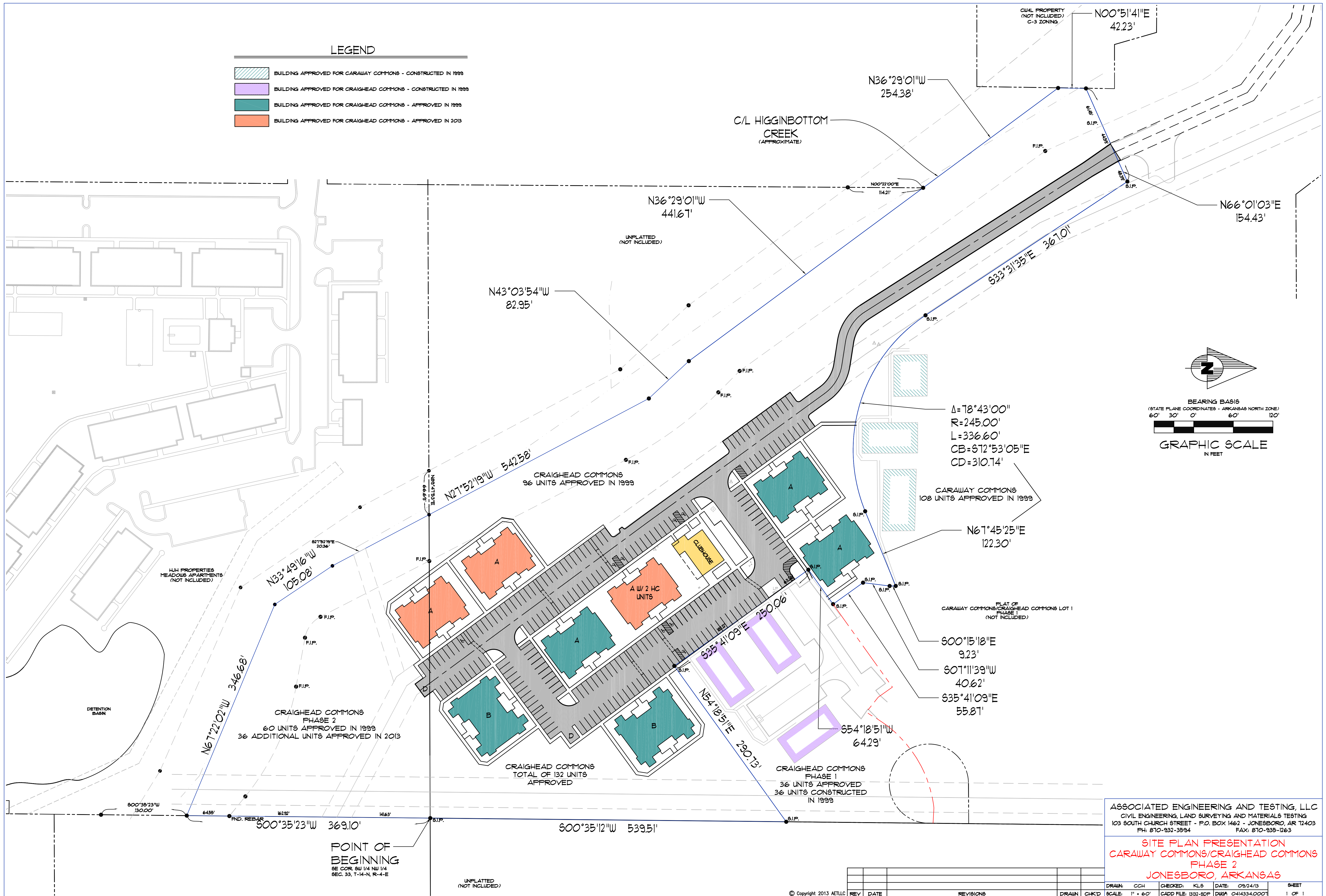


LEGEND

-  BUILDING APPROVED FOR CARAWAY COMMONS - CONSTRUCTED IN 1999
-  BUILDING APPROVED FOR CRAIGHEAD COMMONS - CONSTRUCTED IN 1999
-  BUILDING APPROVED FOR CRAIGHEAD COMMONS - APPROVED IN 1999
-  BUILDING APPROVED FOR CRAIGHEAD COMMONS - APPROVED IN 2013



ASSOCIATED ENGINEERING AND TESTING, LLC
 CIVIL ENGINEERING, LAND SURVEYING AND MATERIALS TESTING
 103 SOUTH CHURCH STREET - P.O. BOX 1462 - JONESBORO, AR 72403
 PH: 810-932-3594 FAX: 810-935-1263

**SITE PLAN PRESENTATION
 CARAWAY COMMONS/CRAIGHEAD COMMONS
 PHASE 2
 JONESBORO, ARKANSAS**

DRAWN: CCH	CHECKED: KLS	DATE: 09/24/13	SHEET
SCALE: 1" = 60'	CADD FILE: 1313-SDP	DWG#: 0414334.0000	1 OF 1

© Copyright 2013 AETLLC