



BID PACKAGE 1
(PREVIOUSLY ISSUED)
INDEX - SHEET INDEX - CIVIL

SHEET NUMBER	SHEET NAME
C002	GENERAL NOTES
C003	BOUNDARY & TOPOGRAPHIC SURVEY
C004	SITE PLAN
C005	DEMOLITION PLANS
C006	UTILITY PLAN
C007	GRADING PLAN
C008	EROSION CONTROL PLAN
C009	LANDSCAPE PLAN
C010	STANDARD DETAILS
C011	STANDARD DETAILS
C012	EROSION CONTROL DETAILS

BID PACKAGE 2
INDEX - SHEET INDEX - STRUCTURAL

SHEET NUMBER	SHEET NAME
S0.0	NOTES AND LEGENDS
S1.1	FOUNDATION PLAN
S1.2	MECH ENCLOSURE FOUNDATION PLAN AND RETAINING WALL DETAILS
S2.1	FOUNDATION DETAILS
S2.2	FOUNDATION DETAILS

INDEX - SHEET INDEX - PLUMBING

SHEET NUMBER	SHEET NAME
P0.01	UNDERGROUND PLUMBING PACKAGE

INDEX - SHEET INDEX - ELECTRICAL

SHEET NUMBER	SHEET NAME
E0.01	UNDERGROUND ELECTRICAL PACKAGE

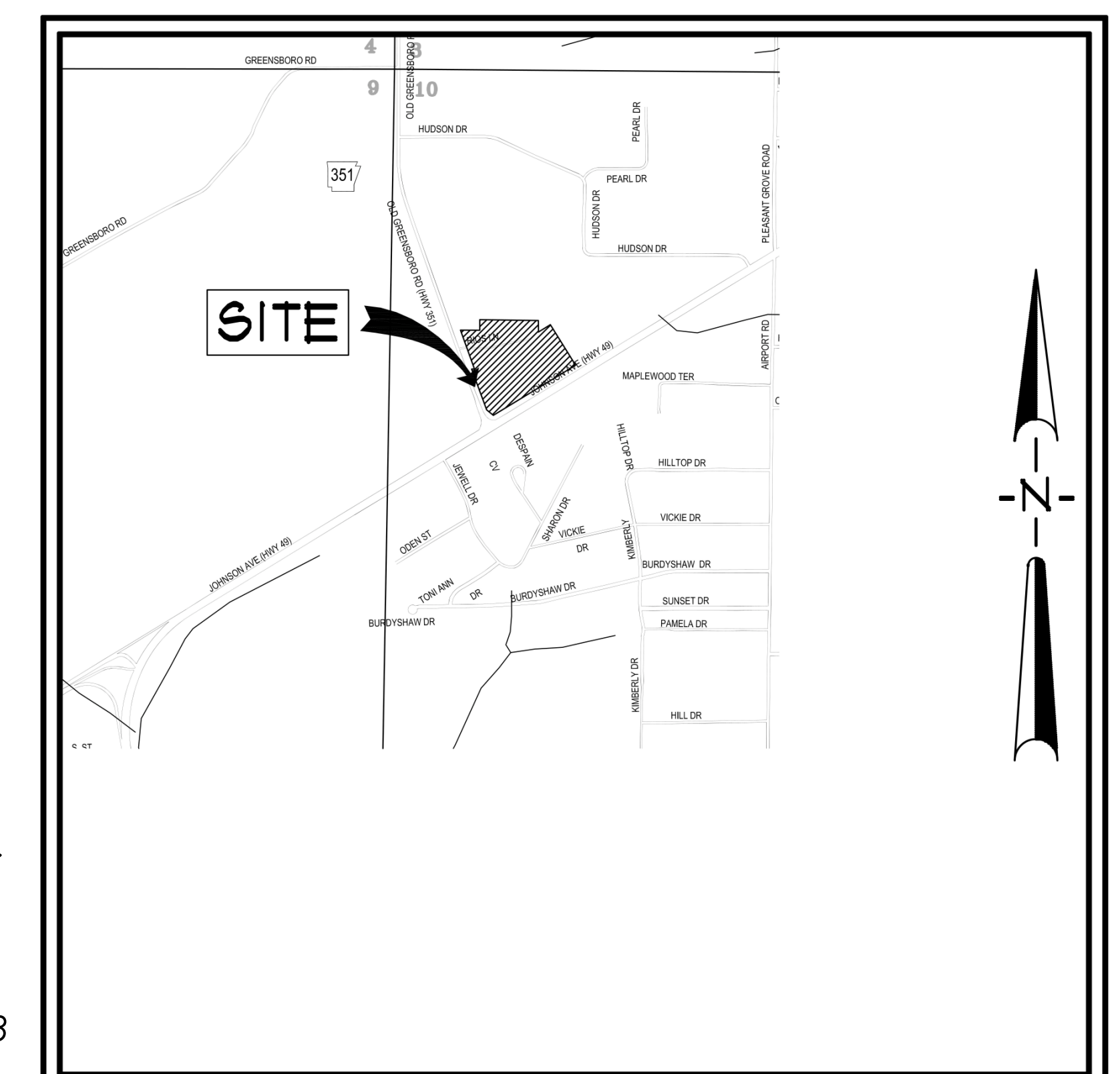
FIRST NATIONAL BANK HILLTOP BRANCH & OFFICE BUILDING

3500 East Johnson Avenue, Jonesboro, Ar

W D & D J O B #16-028

UNDER SLAB & FOUNDATION PACKAGE

09/19/16



VICINITY MAP

WITTENBERG, DELONY, & DAVIDSON, INC.
ARCHITECTS - INTERIOR DESIGN -
PLANNERS
400 WEST CAPITOL, SUITE 1800
LITTLE ROCK, ARKANSAS 72201-4857
PH. # 501-376-6681
FAX # 501-376-0231

ENGINEERING CONSULTANTS, INC.
STRUCTURAL ENGINEERS
401 WEST CAPITOL AVE., SUITE 305
LITTLE ROCK, ARKANSAS 72201
PH. # 501-376-3752
FAX # 501-376-7314

BATSON INC. | ENGINEERING SOLUTIONS
MEP ENGINEERS
1300 BROOKWOOD DRIVE
LITTLE ROCK, ARKANSAS 72202
PH. # 501-664-3311
FAX # 501-664-3344

Associated Engineering, LLC
CIVIL ENGINEERS
103 South Church St.
P.O. Box 1462
Jonesboro, ARKANSAS 72403
PH. # 870-932-3594
FAX # 870-935-1263

ABBREVIATION LEGEND

Table with columns: Abbreviation, Description. Includes terms like A.R. ANCHOR RODS, AFF ABOVE FINISHED FLOOR ARCHITECTURAL, B.P.L. BASE PLATE, etc.

STRUCTURAL NOTES

GENERAL NOTES
1. THE CONTRACTOR SHALL THOROUGHLY REVIEW ALL CONTRACT DOCUMENTS AND INFORM THE ARCHITECT OF CONFLICTS OR DISCREPANCIES PRIOR TO BIDDING, FABRICATION, AND CONSTRUCTION.
2. IN CASES OF DISCREPANCIES IN DIMENSIONS AND ELEVATIONS BETWEEN STRUCTURAL AND ARCHITECTURAL DRAWINGS, CONTRACTOR SHALL COORDINATE WITH THE ARCHITECT PRIOR TO FABRICATION AND CONSTRUCTION.

POST-TENSIONING CONCRETE (CONTINUED)

12. TENDON PLACEMENT SHALL NOT VARY MORE THAN 1/8" VERTICALLY FROM THE ORDINATES GIVEN.
13. THE EXPOSED PORTION OF THE TENDON AND THE GRIPPING PART OF THE ANCHORAGE SHALL BE COATED WITH AN EPOXY-RESIN COMPOUND BEFORE BEING DRY-PAKED WITH GROUT.
14. GROUT ALL FORM POCKETS SOLID WITH NON-SHRINK, NON-METALLIC GROUT AS SOON AS TENDON TAILS ARE CUT OFF AND FORM POCKETS ARE SEALED AGAINST MOISTURE.

STRUCTURAL STEEL (CONTINUED)

19. WHERE STEEL BACKING IS USED IN CONNECTIONS WITH COMPLETE-JOINT-PENETRATION (CJP) FLANGE WELDS, STEEL BACKING AND TABS SHALL BE REMOVED EXCEPT THAT TOP FLANGE BACKING ATTACHED TO THE COLUMN BY A CONTINUOUS FILLET WELD ON THE EDGE BELOW THE CJP GROOVE WELD NEED NOT BE REMOVED.
20. FOLLOWING THE REMOVAL OF BACKING, THE STEEL PAINING SHALL BE BACKGROUNDED TO SOUND WELD METAL AND BACKWELDED WITH A REINFORCING FILLET. THE REINFORCING FILLET SHALL HAVE A MINIMUM LEG SIZE OF 3/16" (8 mm).

DESIGN LOADS

DEAD LOADS: WEIGHT OF THE STRUCTURE
ROOF LIVE LOAD: 20 PSF
FLOOR LIVE LOADS: OFFICES 50 PSF, PARKING GARAGES 80 PSF, ASHTO LOADS 80 PSF, LOBBIES 100 PSF, ASSEMBLY AREAS 100 PSF, STAIRS AND EXITS 100 PSF, COMPUTER ROOMS 125 PSF, MECHANICAL ROOMS 125 PSF

PROJECT TITLE
FIRST NATIONAL BANK
HILLTOP BRANCH & OFFICE BUILDING

REVIEWS AND LEGENDS
NOTES AND LEGENDS

REVISIONS
REV. NO. DATE
JOB NO 16-028
JOB# 16-175



Engineering Consultants, Inc.
Structural Engineers
401 West Capitol Avenue, Suite 305
Little Rock, Arkansas 72201-4401
Phone No: (501) 376-3752
Fax No: (501) 376-7314
JOB# 16-175

Table for CAST-IN-PLACE CONCRETE MIX DESIGN TABLE. Columns: 28 DAY COMP. STRENGTH, MIN. CEMENT, MAXIMUM PERMISSIBLE W/C RATIO, AIR ENTRAINED, MIN. CEMENT, MAXIMUM PERMISSIBLE W/C RATIO, MAX. SLUMP, MAX. W/ WEA.

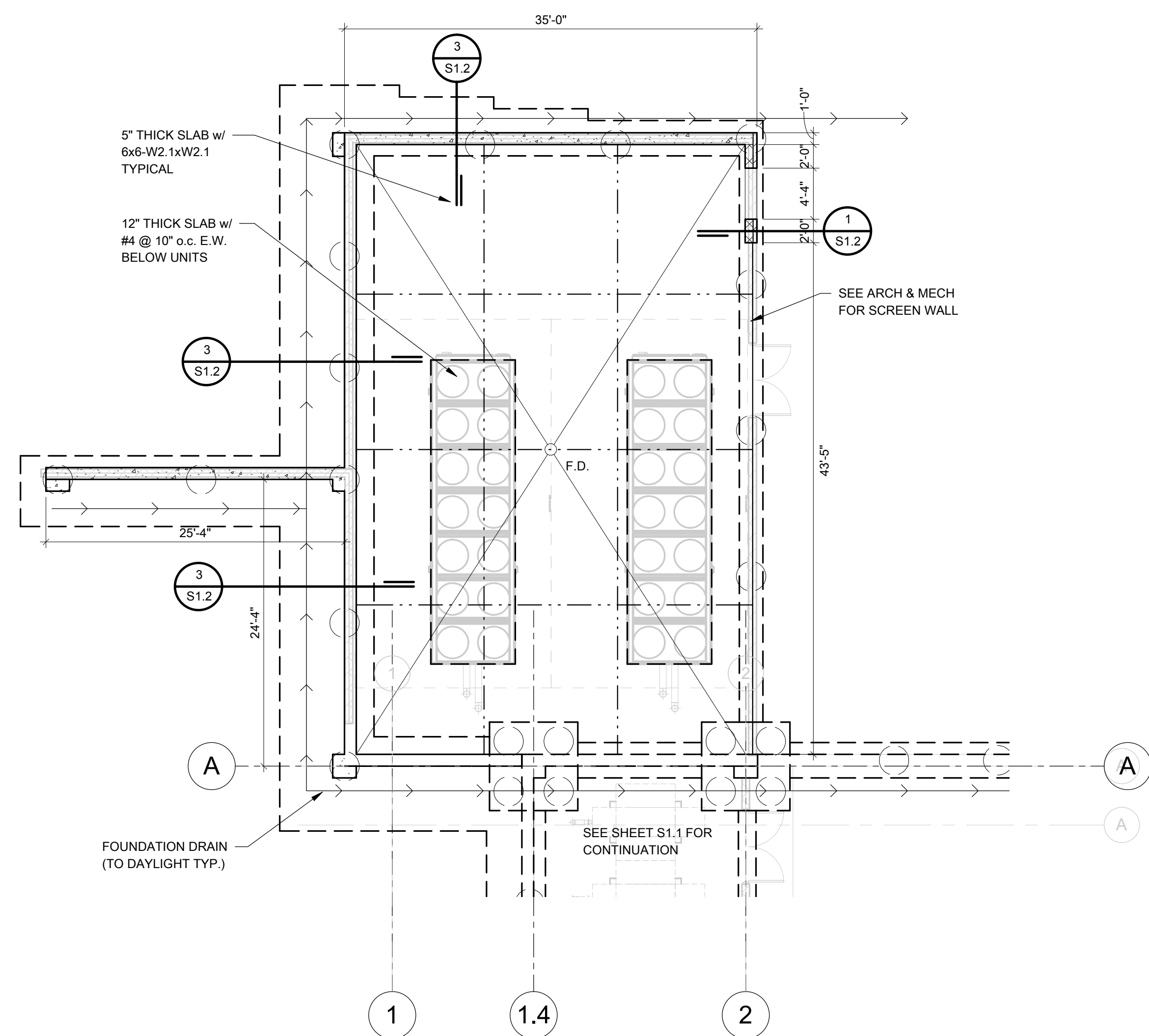
CAST-IN-PLACE CONCRETE MIX DESIGN TABLE
1. ALL CONCRETE EXPOSED TO WEATHER SHALL CONTAIN 5.5% AIR ENTRAINMENT (±1.5%). DO NOT EXCEED 3% AIR CONTENT IN CONCRETE PLACING A STEEL TROWEL FINISH.
2. FLOABILITY FILL SHALL MEET THE FOLLOWING REQUIREMENTS:



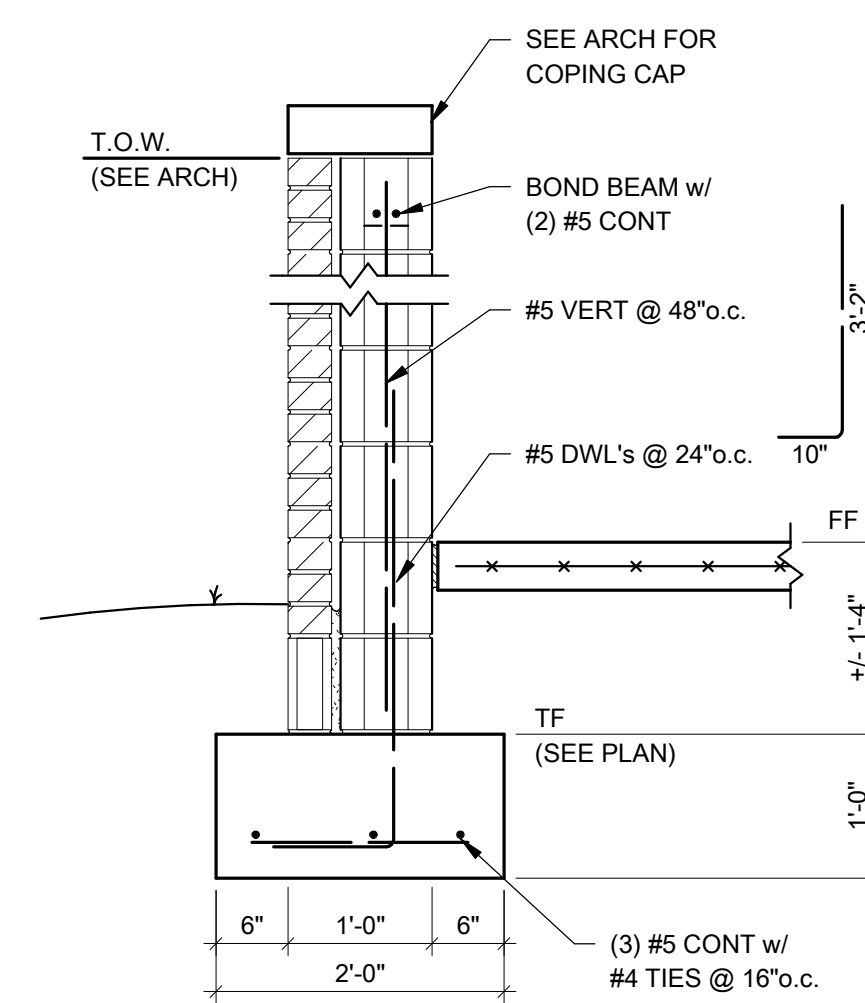
WITTENBERG, DELONY & DAVIDSON ARCHITECTS
09/19/16
16-028



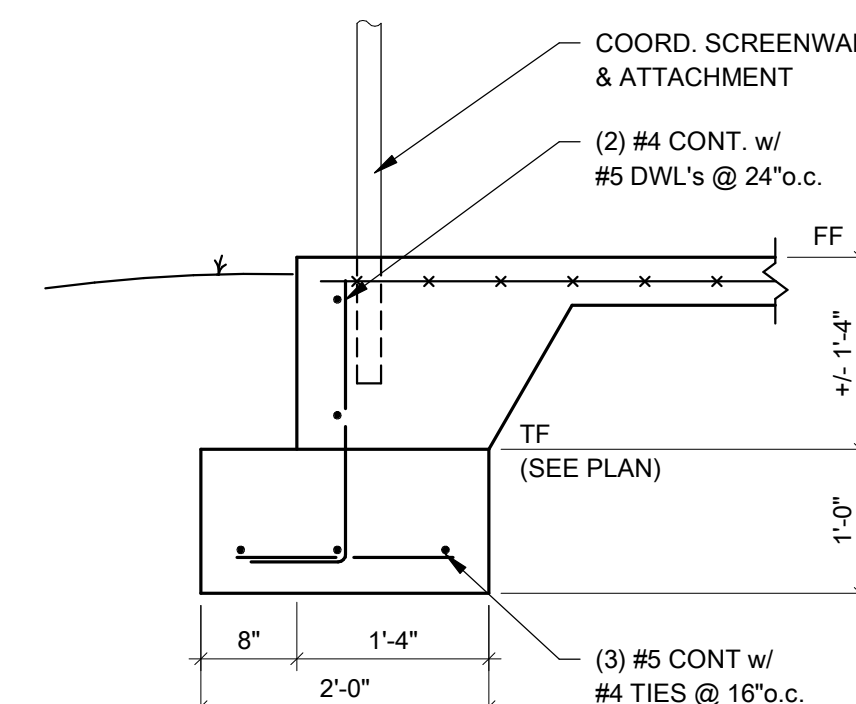
STATE OF ARKANSAS
ENGINEERING CONSULTANTS
No. 26
RENEWED
DAVIDSON



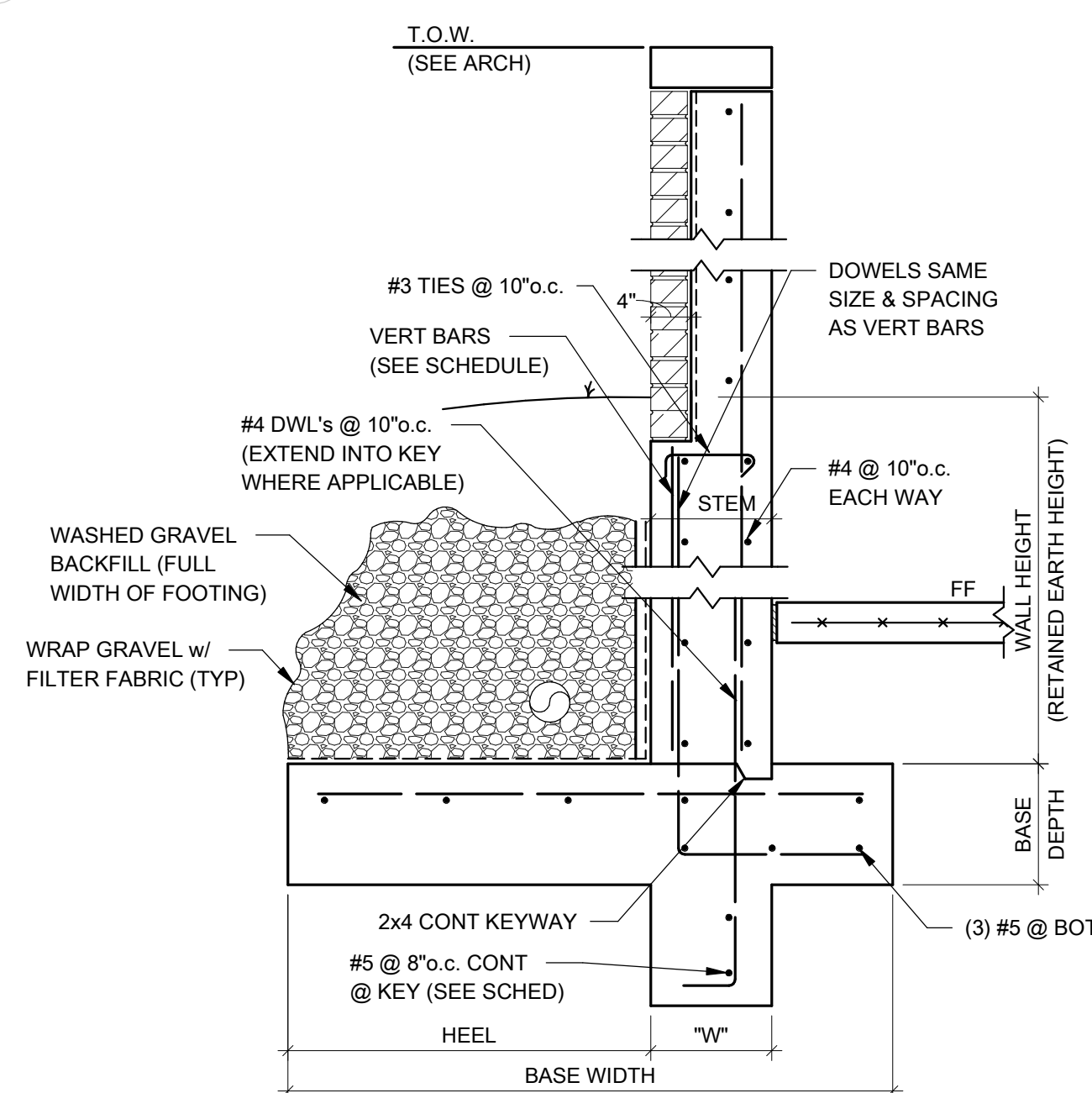
A MECH ENCLOSURE FOUNDATION PLAN
1/8" = 1'-0"



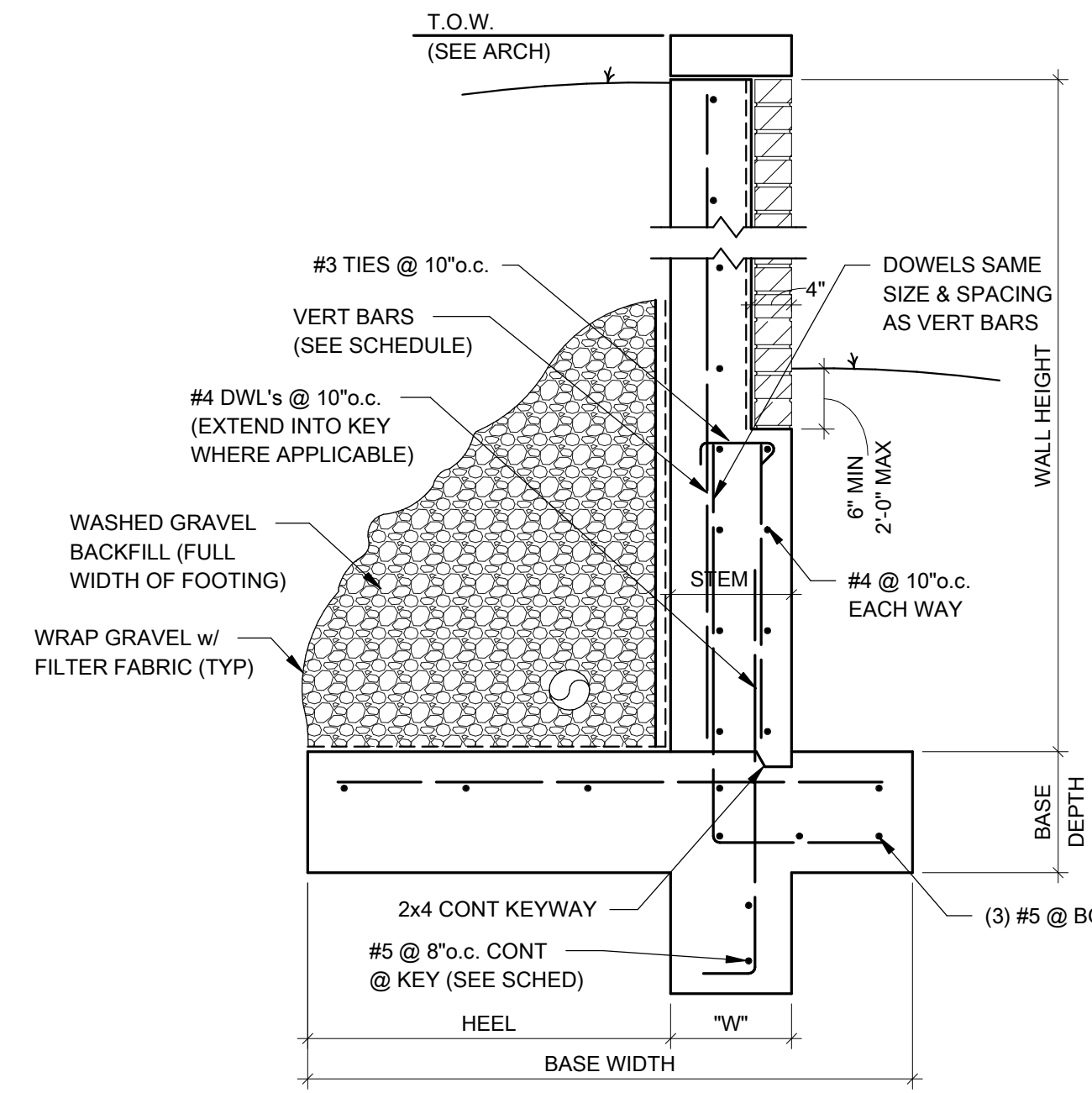
1 SECTION
3/4" = 1'-0"



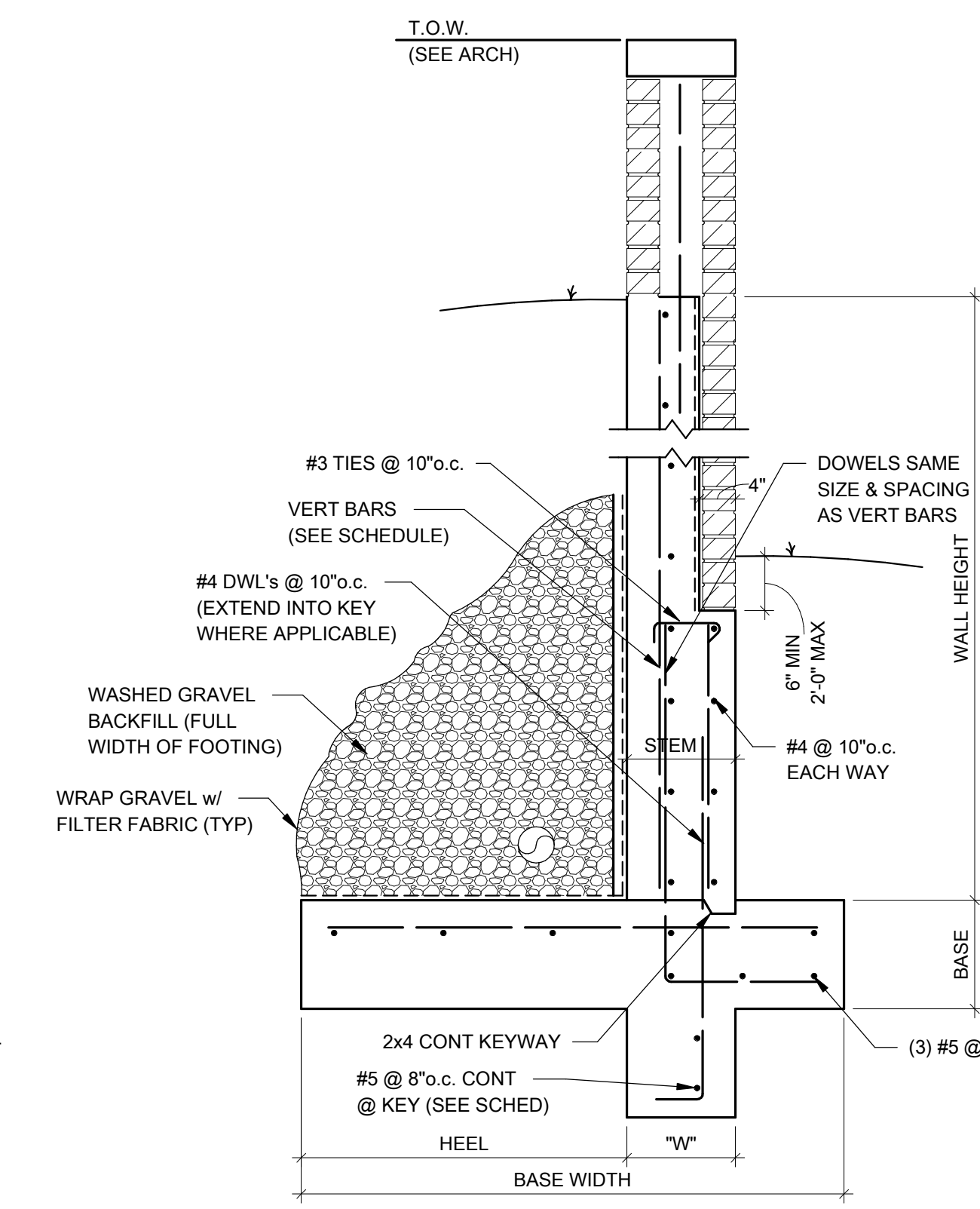
2 SECTION
3/4" = 1'-0"



3 SECTION
3/4" = 1'-0"



4 SECTION
3/4" = 1'-0"



5 SECTION
3/4" = 1'-0"

USE RETAINING WALL SCHEDULE BELOW FOR SECTIONS 3, 4 & 5

RETAINING WALL SCHEDULE

WALL HEIGHT	BASE		HEEL	STEM	VERT BARS	INSIDE BAR LAP	KEY	
	WIDTH	DEPTH					W	L
0' TO 4'-0"	4'-0"	1'-0"	2'-0"	1'-0"	#4 @ 10" o.c.	2'-4"	N/A	N/A
4'-1" TO 6'-0"	5'-0"	1'-0"	3'-0"	1'-0"	#4 @ 10" o.c.	2'-4"	1'-0"	1'-0"
6'-1" TO 8'-0"	6'-0"	1'-0"	4'-0"	1'-0"	#5 @ 10" o.c.	3'-0"	1'-0"	1'-0"
8'-1" TO 10'-0"	7'-0"	1'-0"	4'-4"	1'-0"	#6 @ 10" o.c.	3'-6"	1'-0"	1'-6"
10'-1" TO 13'-0"	8'-0"	1'-6"	4'-6"	1'-4"	#7 @ 10" o.c.	4'-0"	1'-4"	1'-6"

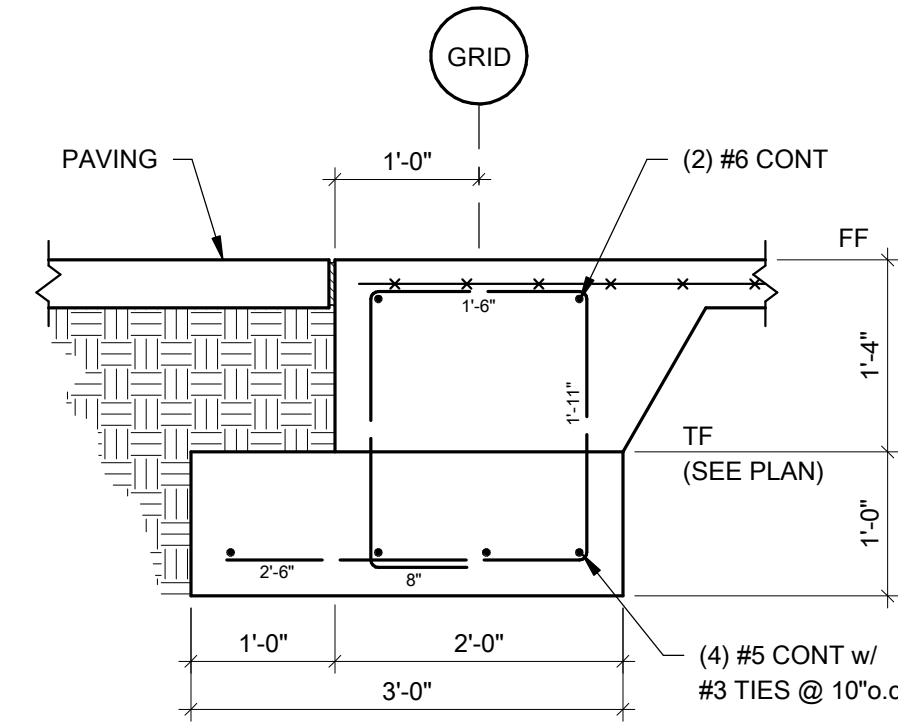
Engineering Consultants, Inc.
Structural Engineers

401 West Capitol Avenue, Suite 305
Little Rock, Arkansas 72201-3401
Phone No: (501) 376-3752
Fax No: (501) 376-7314

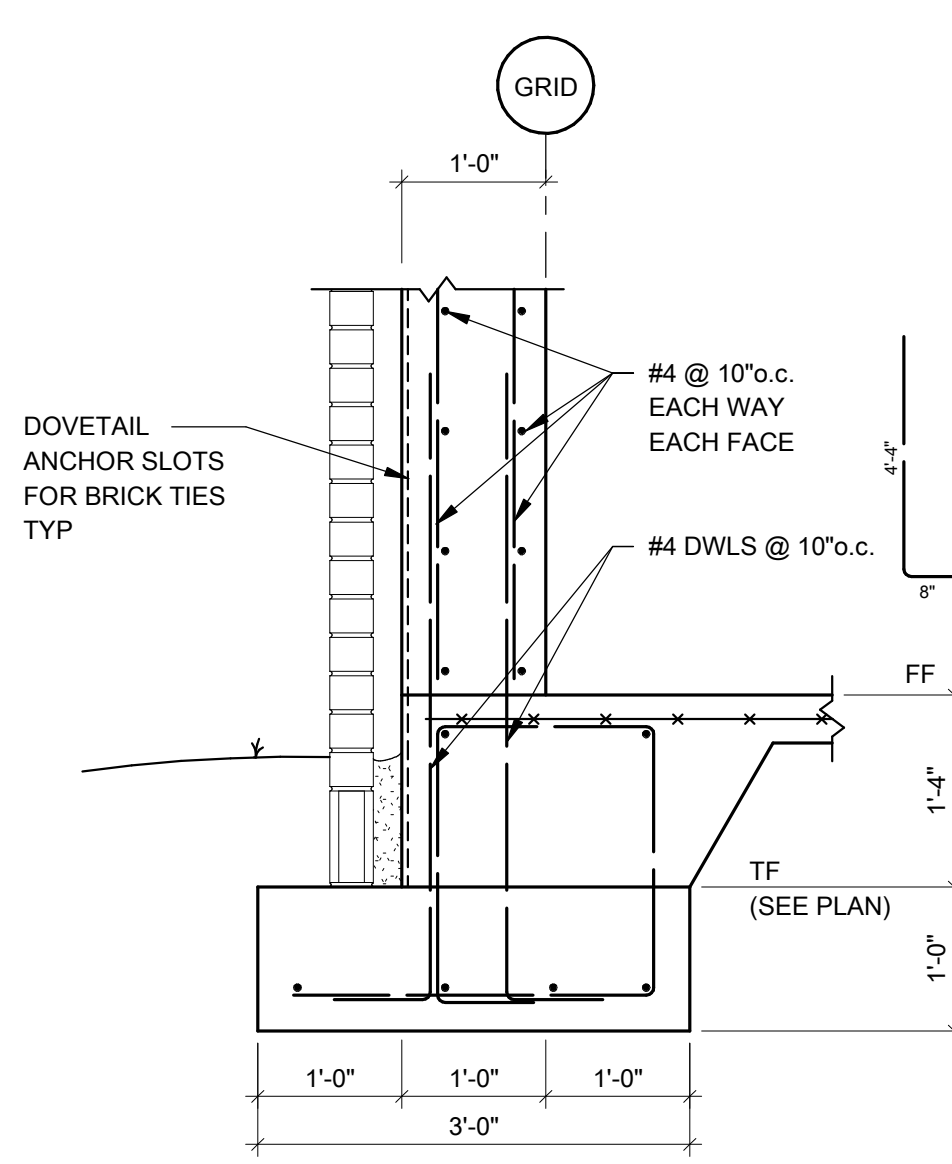
9/19/2016

STATE OF ARKANSAS
REGISTERED PROFESSIONAL ENGINEER
No. 8903

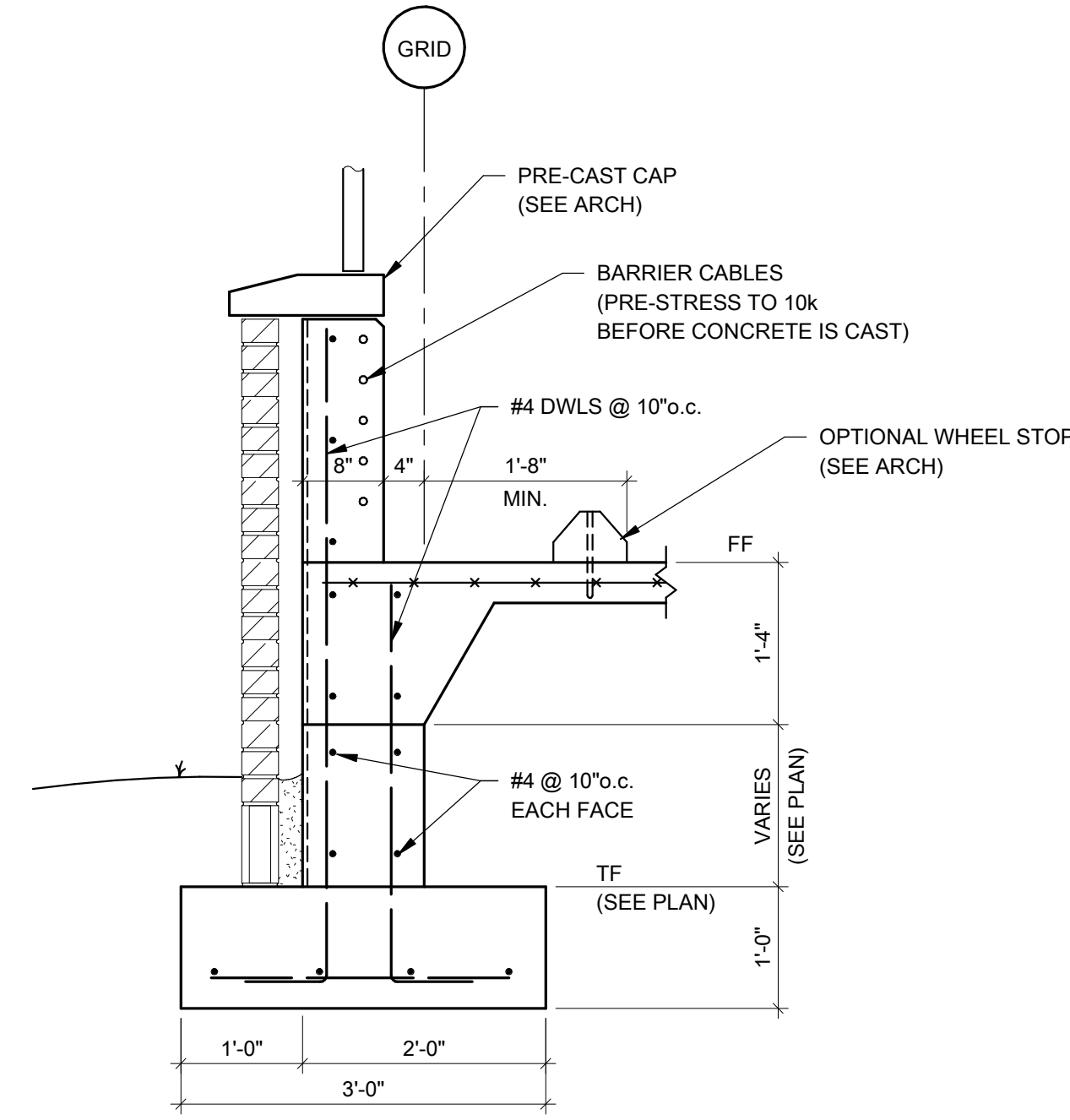
Cloud/Reference sheet files in P:\First National Bank\A\CD\01\16-028\16-028.dwg



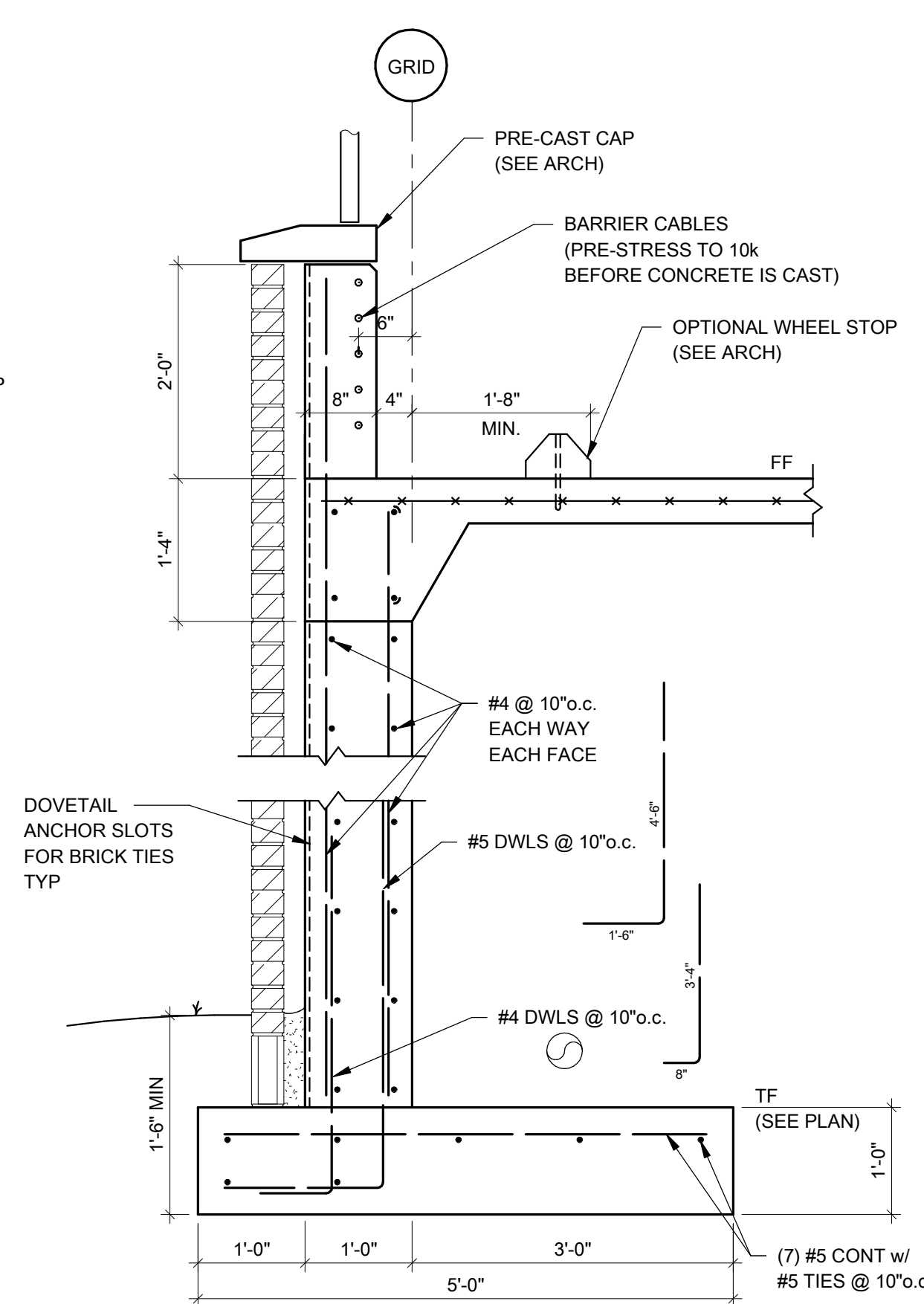
1 SECTION
3/4" = 1'-0"



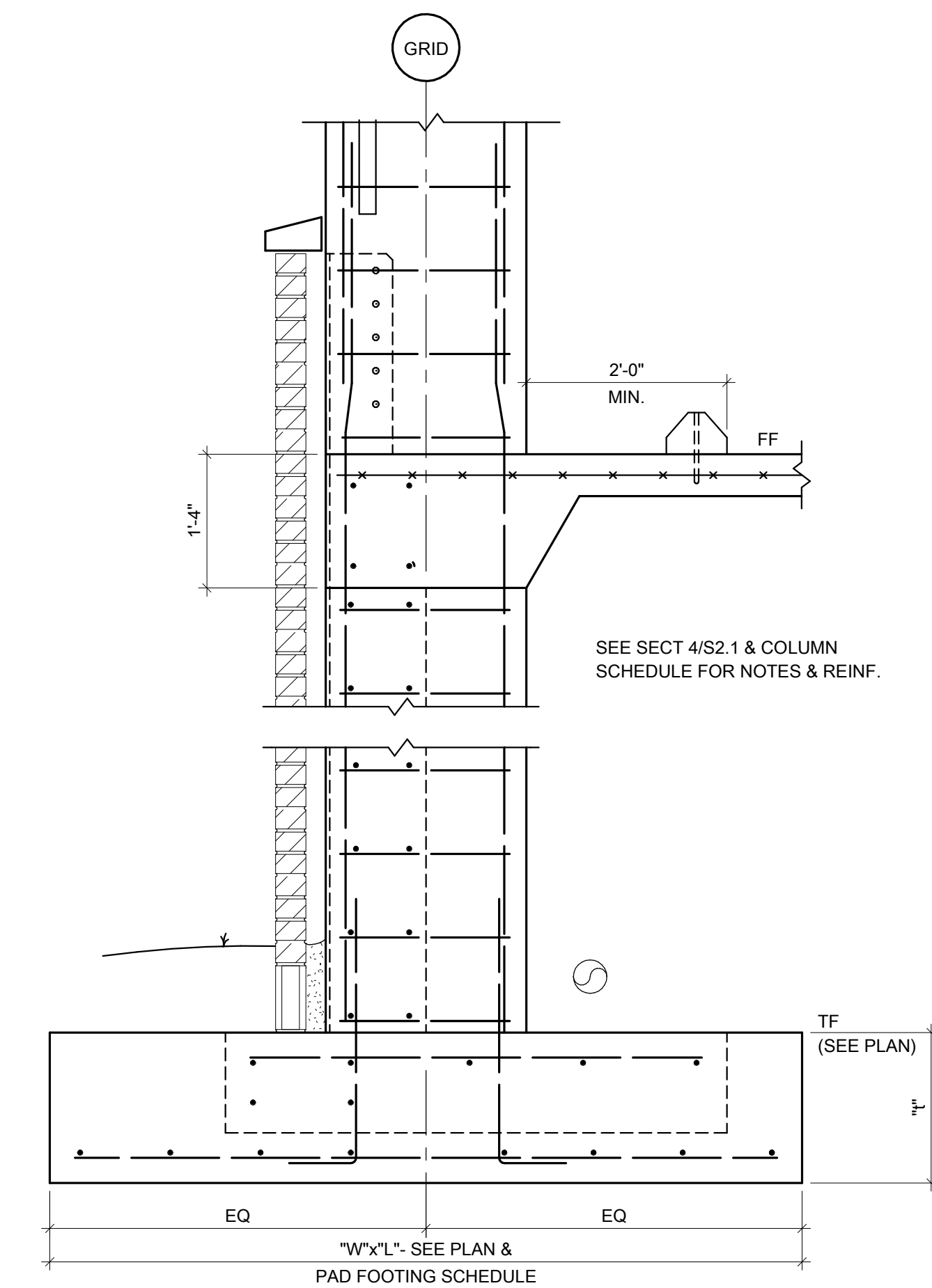
2 SECTION
3/4" = 1'-0"



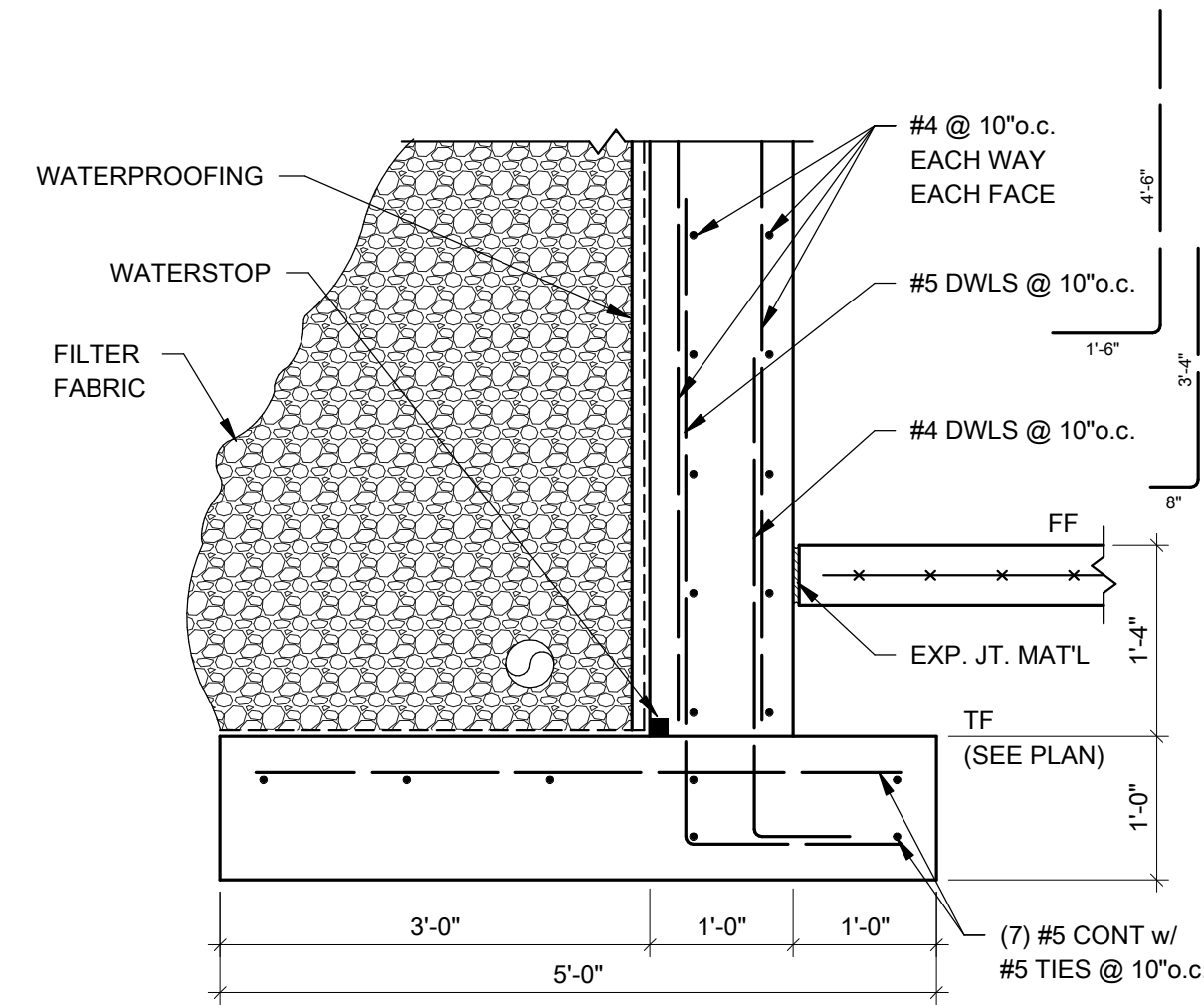
3 SECTION
3/4" = 1'-0"



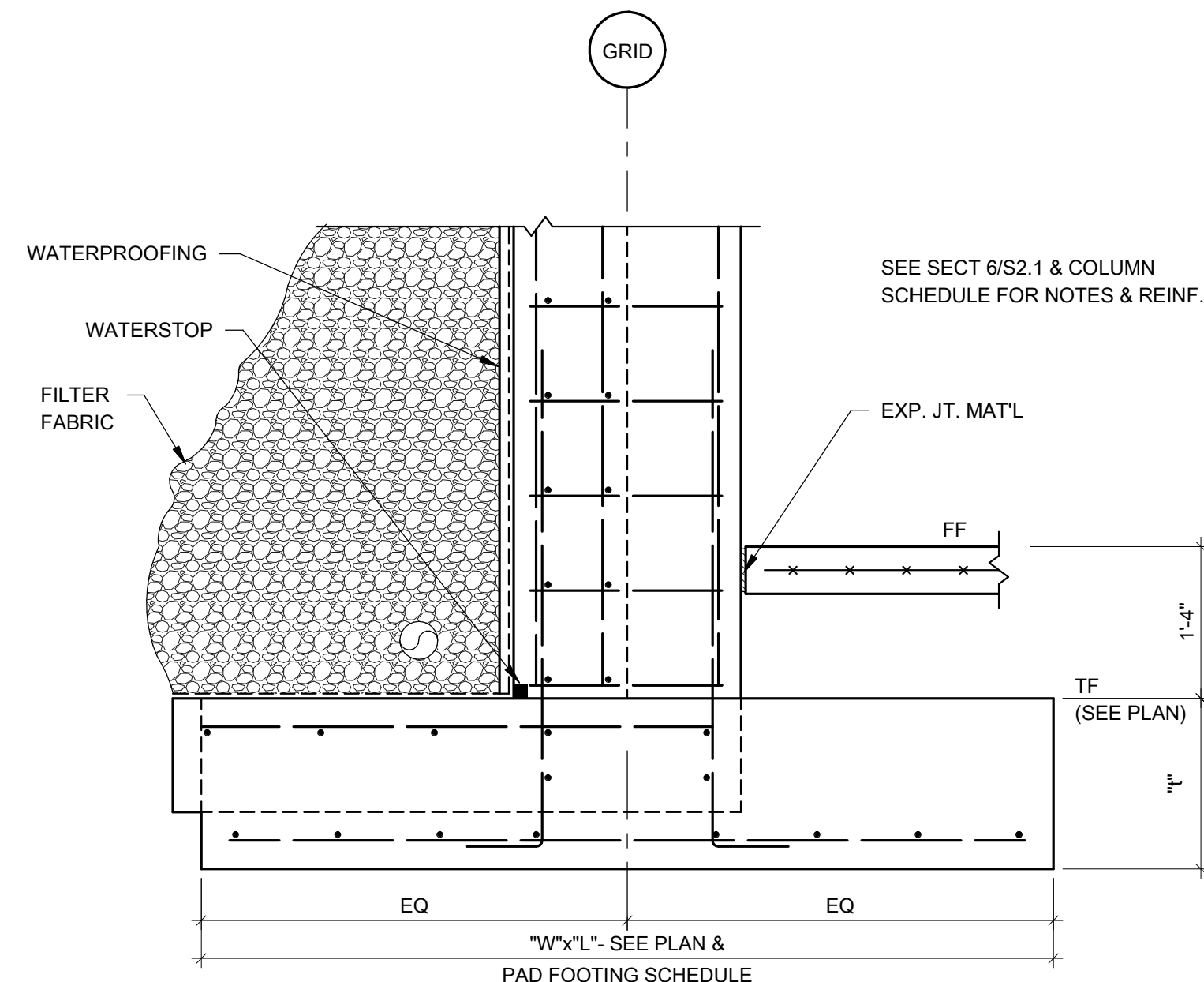
4 SECTION
3/4" = 1'-0"



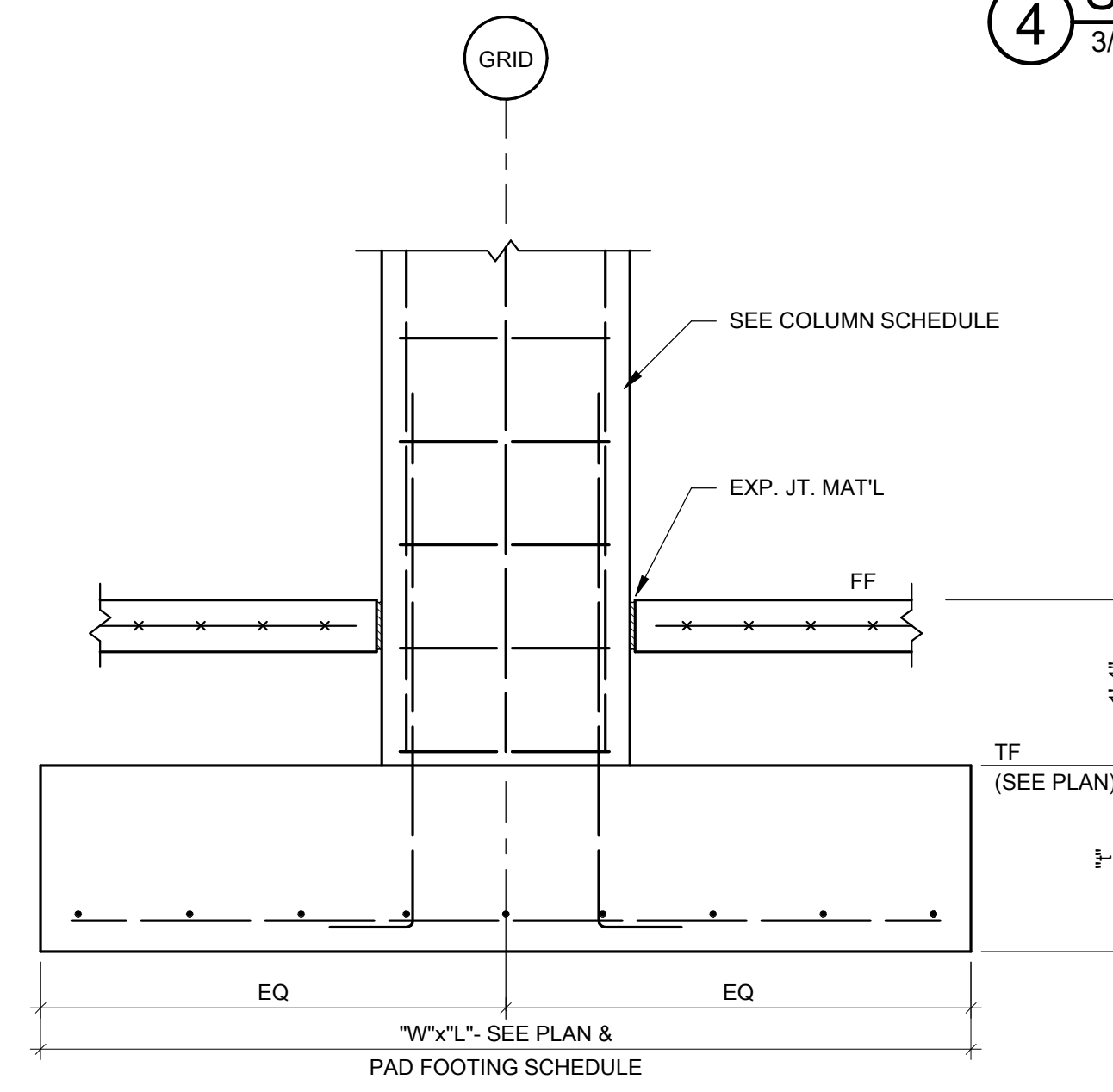
5 SECTION
3/4" = 1'-0"



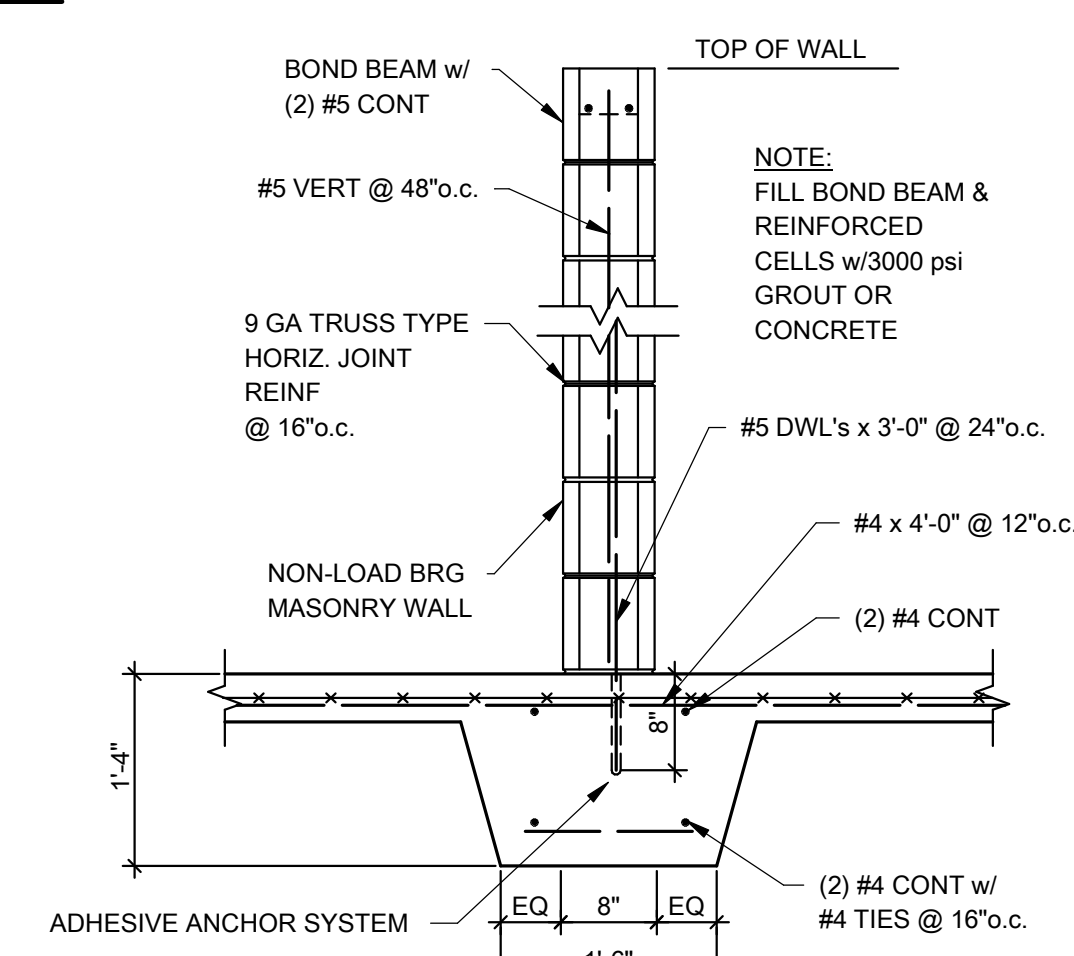
6 SECTION
3/4" = 1'-0"



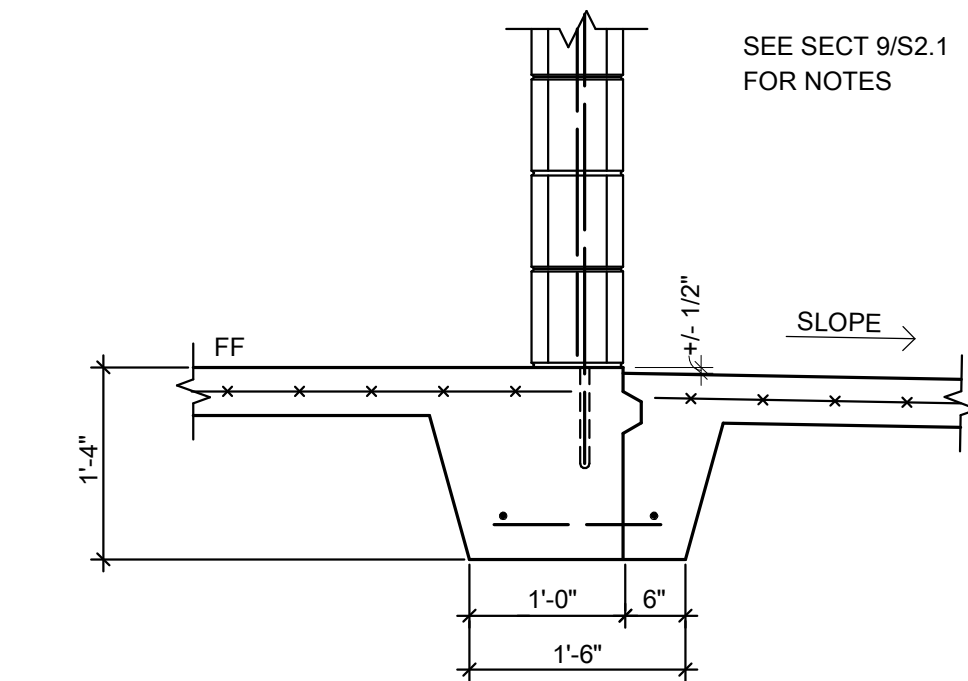
7 SECTION
3/4" = 1'-0"



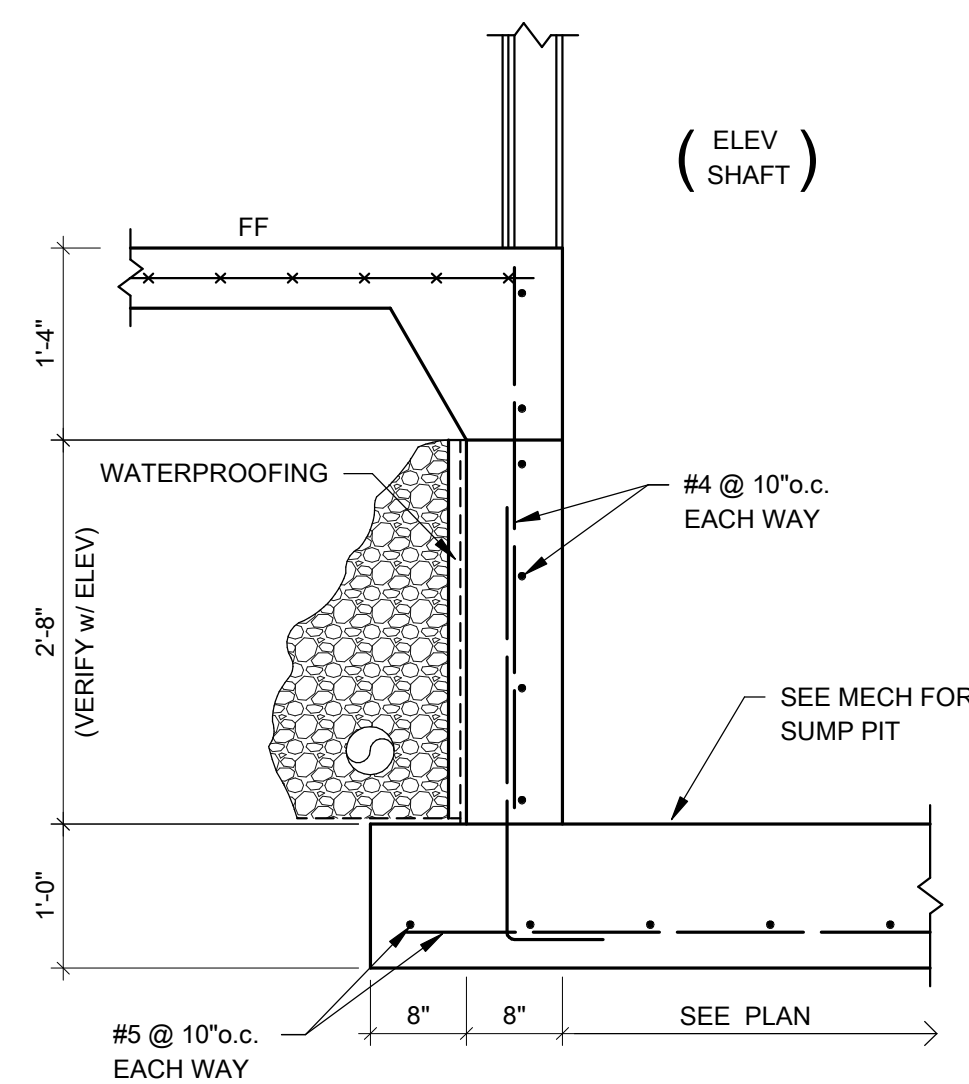
8 SECTION
3/4" = 1'-0"



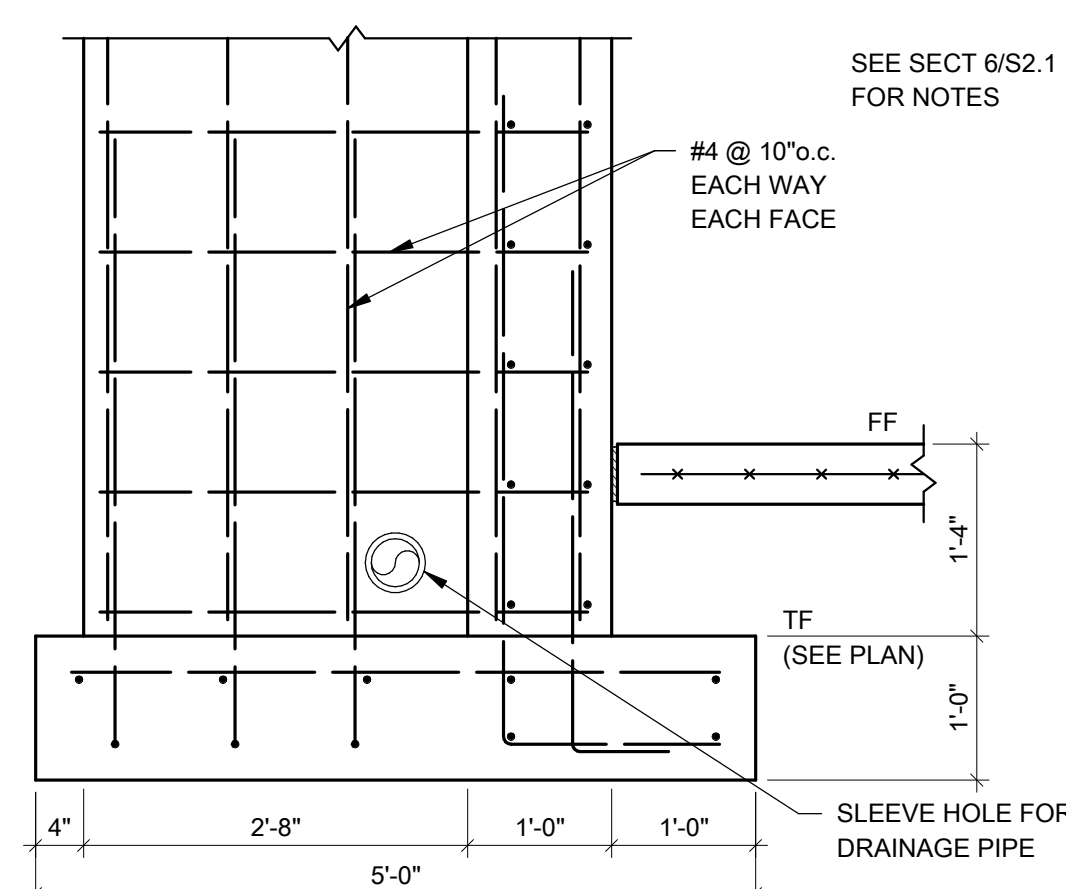
9 THICKENED SLAB DETAIL (TYP)
3/4" = 1'-0"



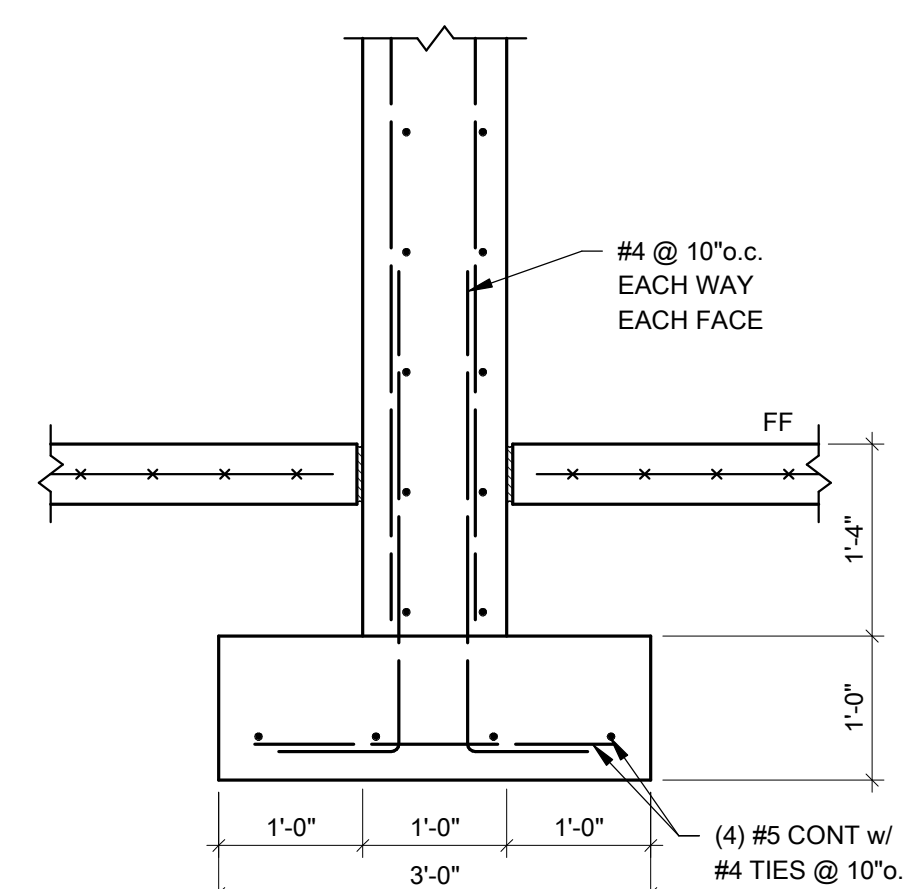
9A THICKENED SLAB w/ CJ DETAIL
3/4" = 1'-0"



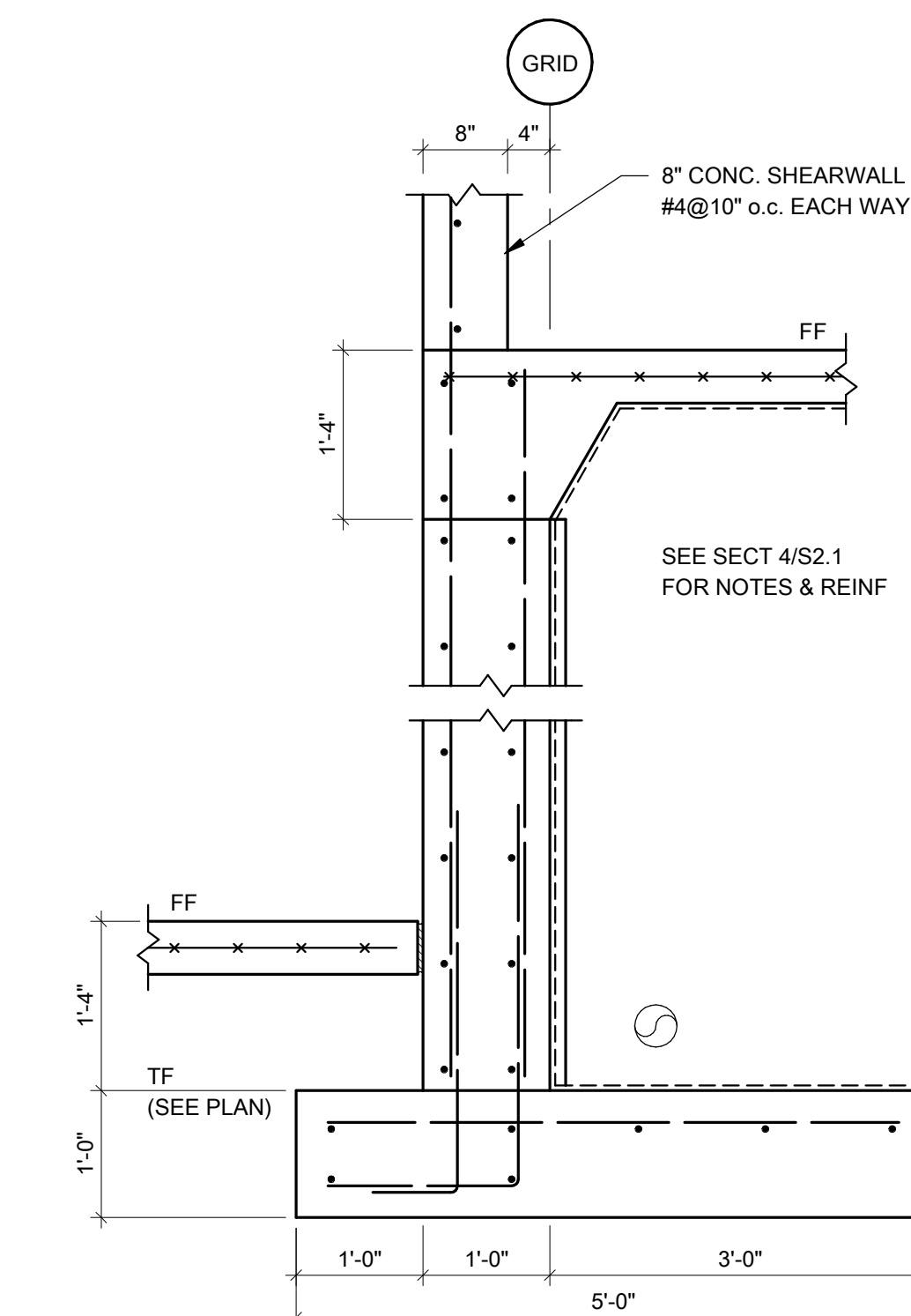
10 SECTION
3/4" = 1'-0"



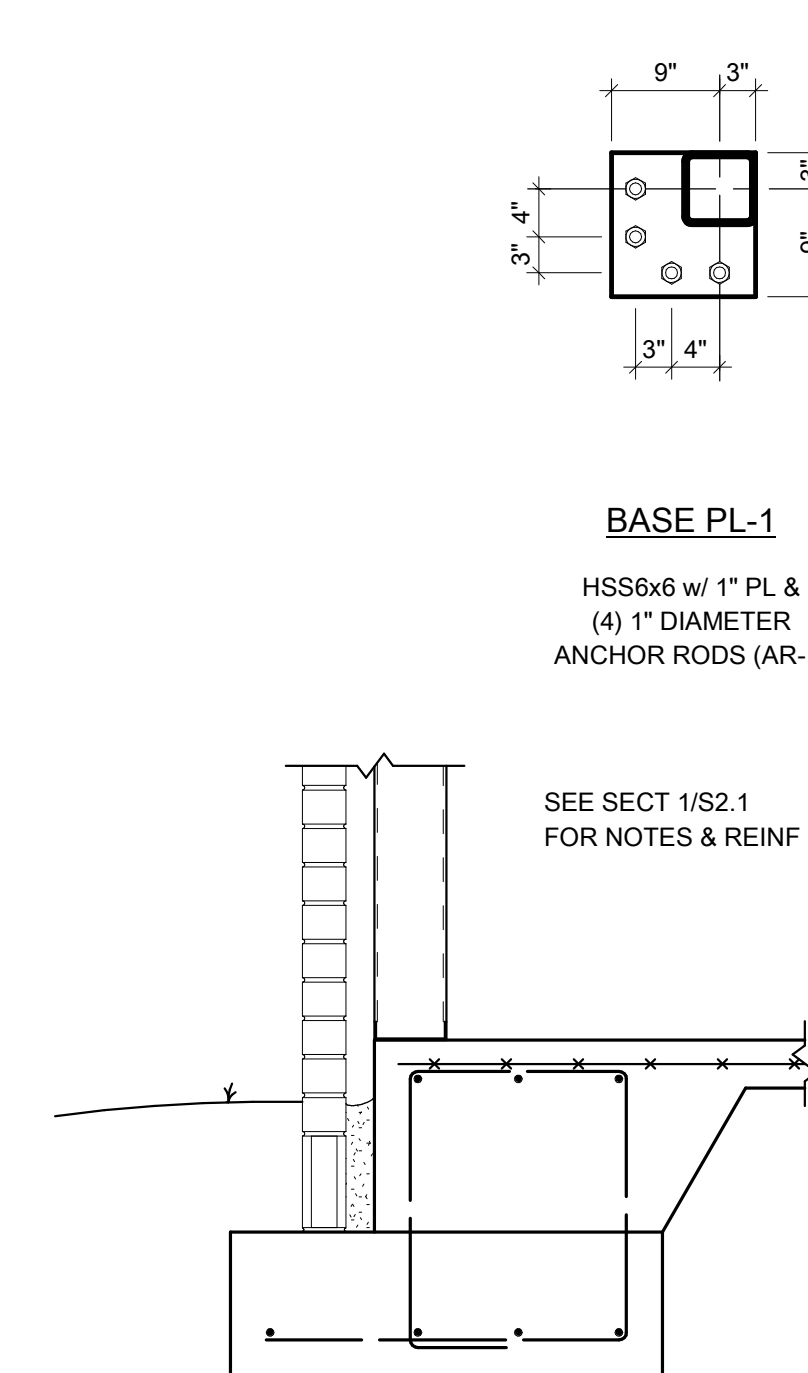
11 SECTION
3/4" = 1'-0"



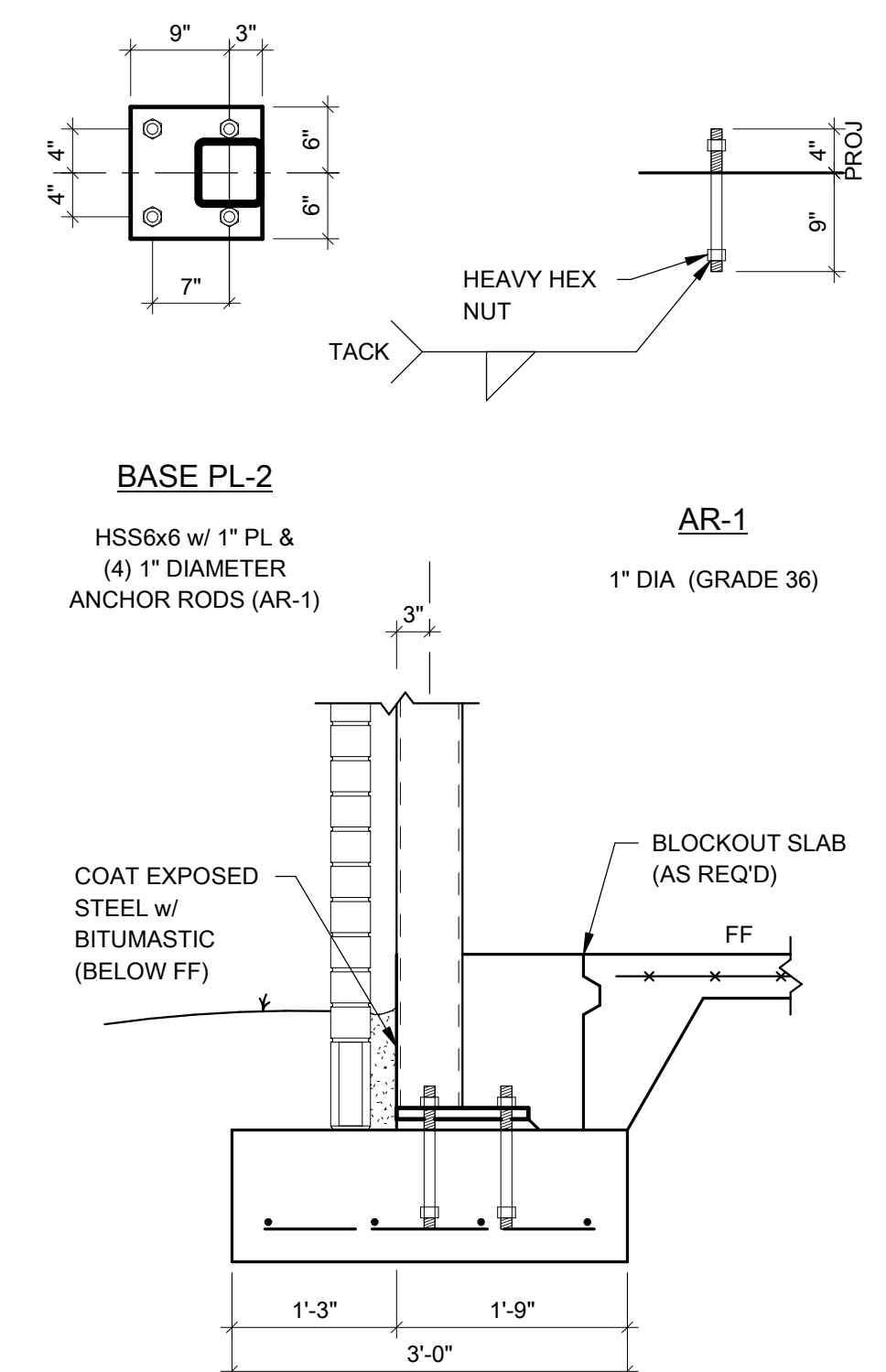
12 SECTION
3/4" = 1'-0"



13 SECTION
3/4" = 1'-0"



14 SECTION
3/4" = 1'-0"



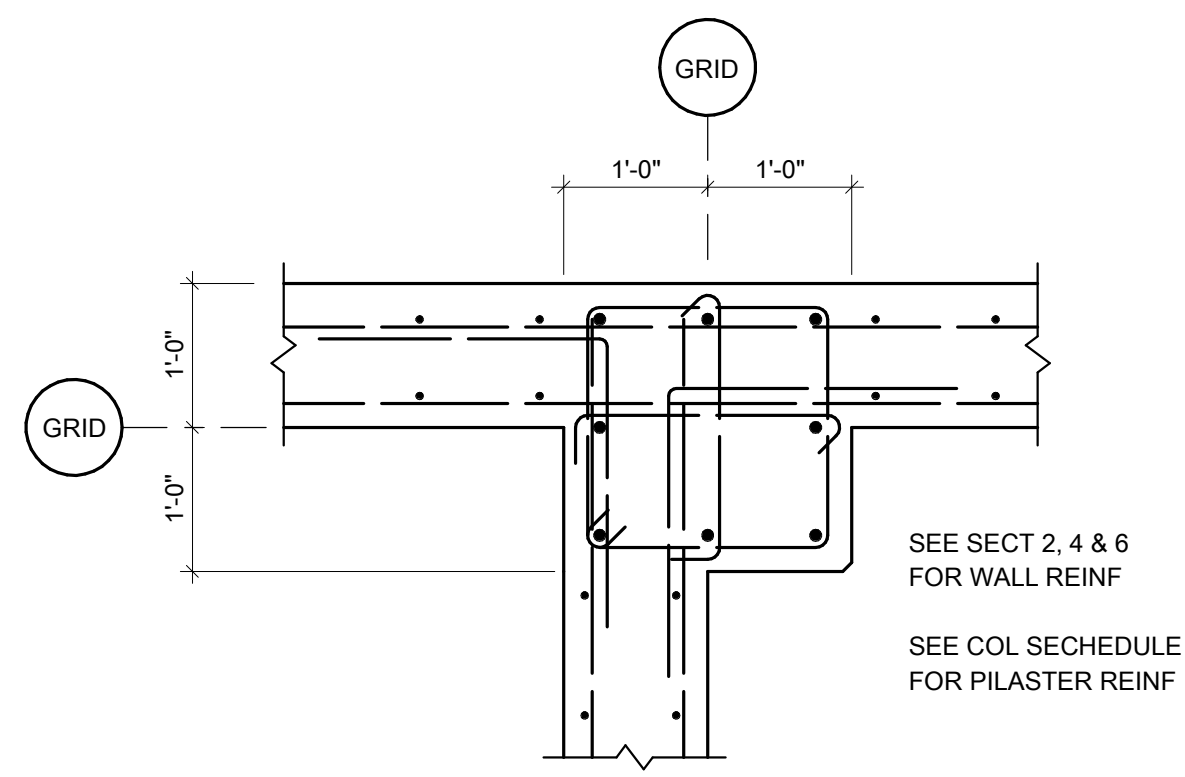
15 SECTION
3/4" = 1'-0"

Engineering Consultants, Inc.
Structural Engineers

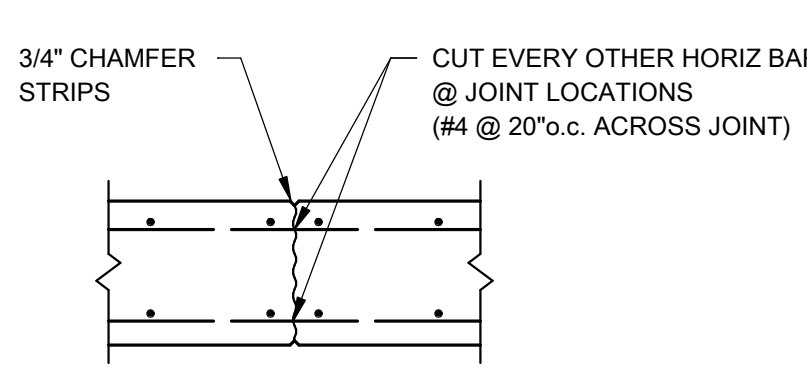
401 West Capitol Avenue, Suite 305
Little Rock, Arkansas 72201-3401
Phone No: (501) 376-3752
Fax No: (501) 376-7314

9/19/2016

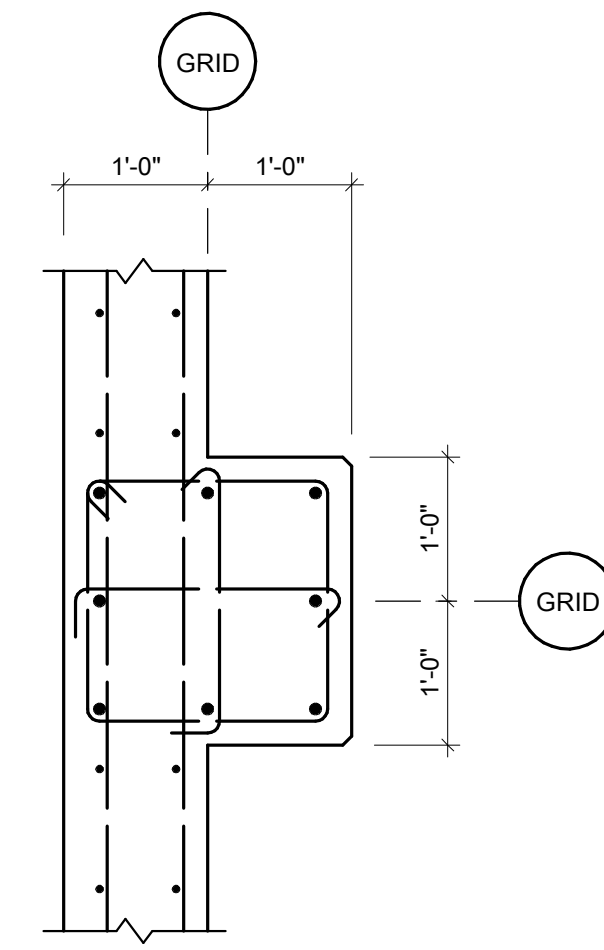
STATE OF ARKANSAS
REGISTERED PROFESSIONAL ENGINEER
No. 8953



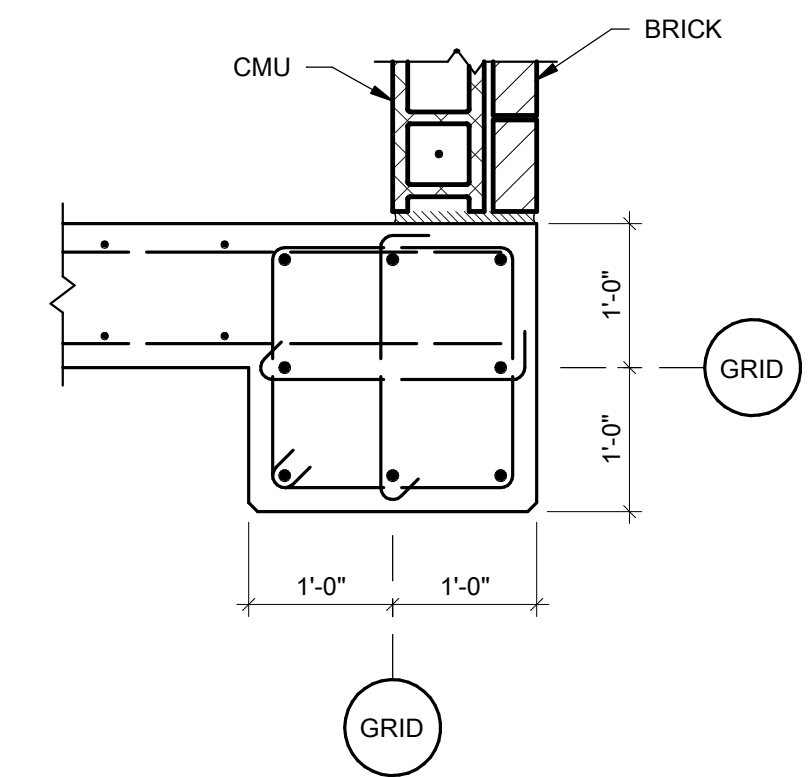
1 PLAN DETAIL
3/4" = 1'-0"



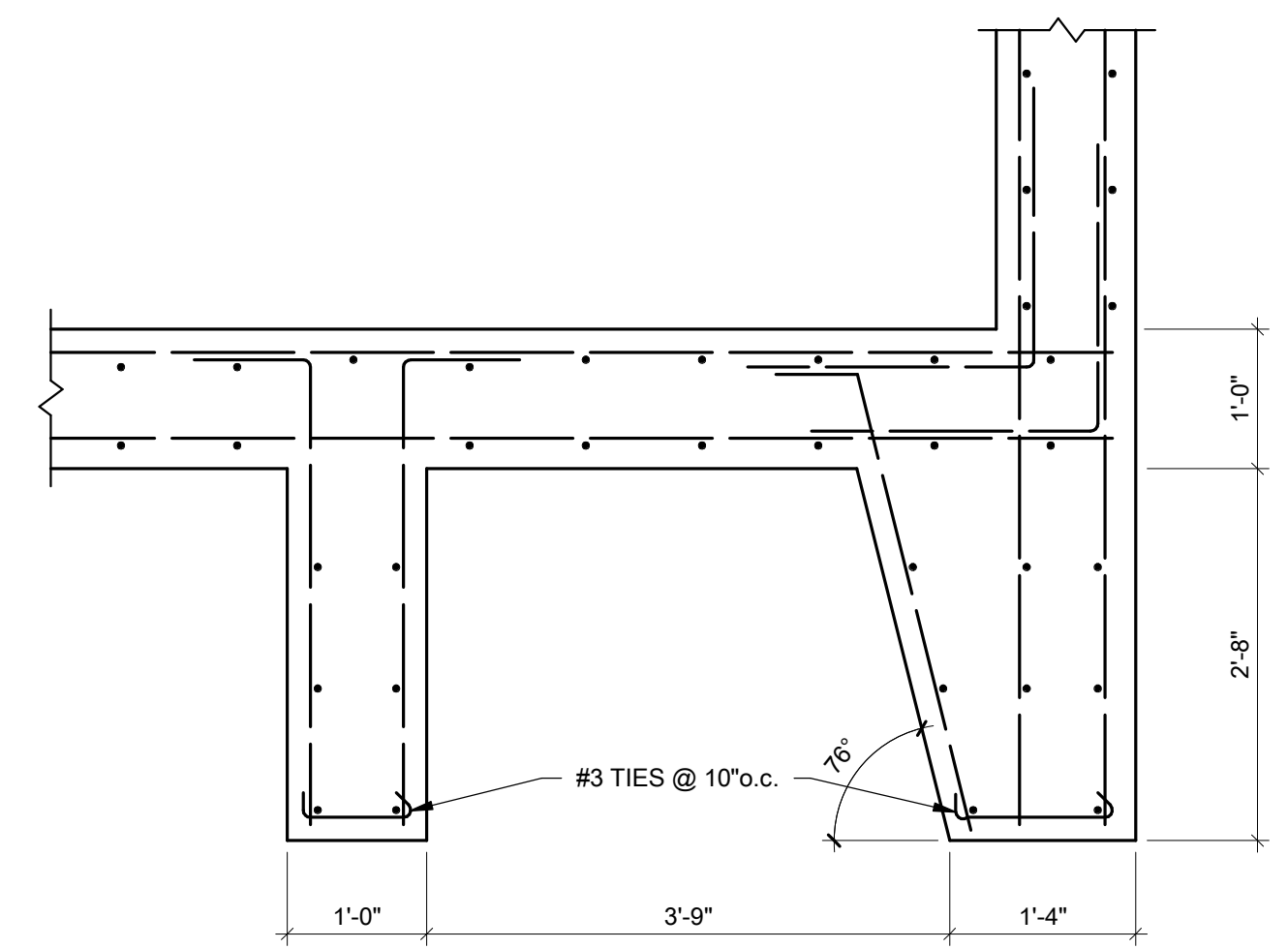
2 WALL C.J. DETAIL
3/4" = 1'-0"



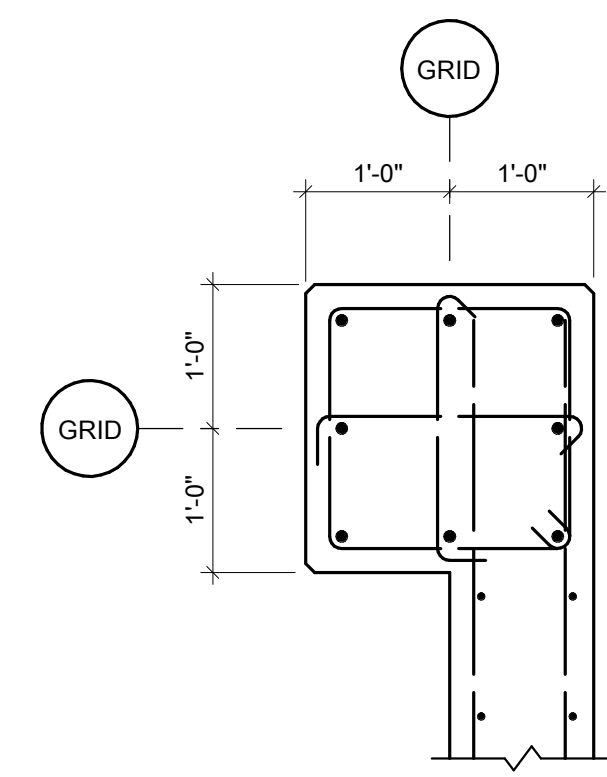
3 PLAN DETAIL
3/4" = 1'-0"



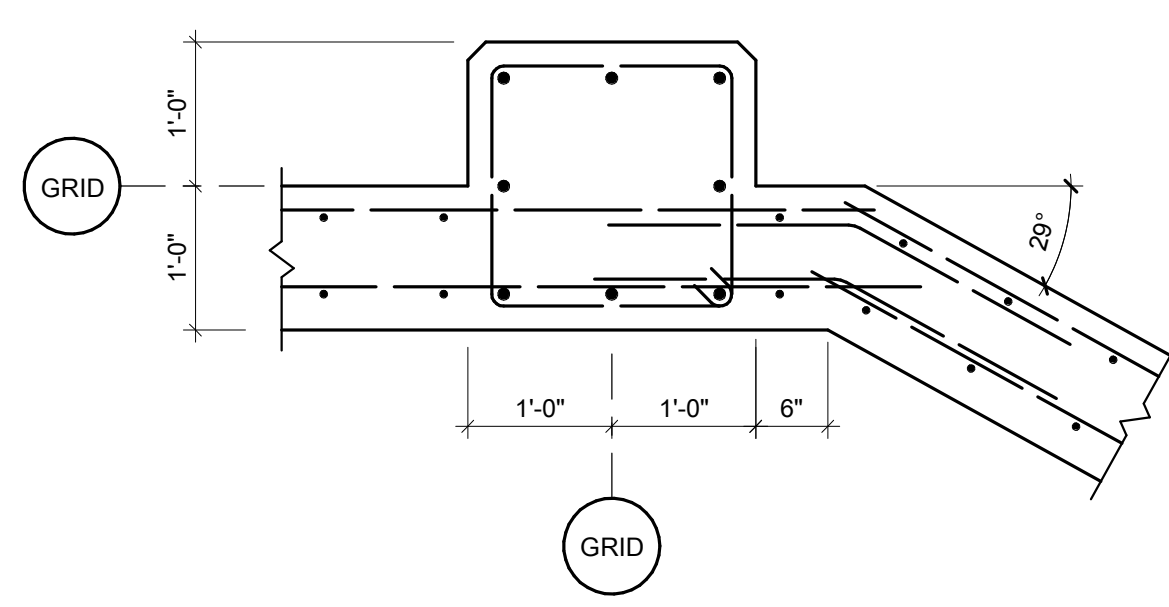
4 PLAN DETAIL
3/4" = 1'-0"



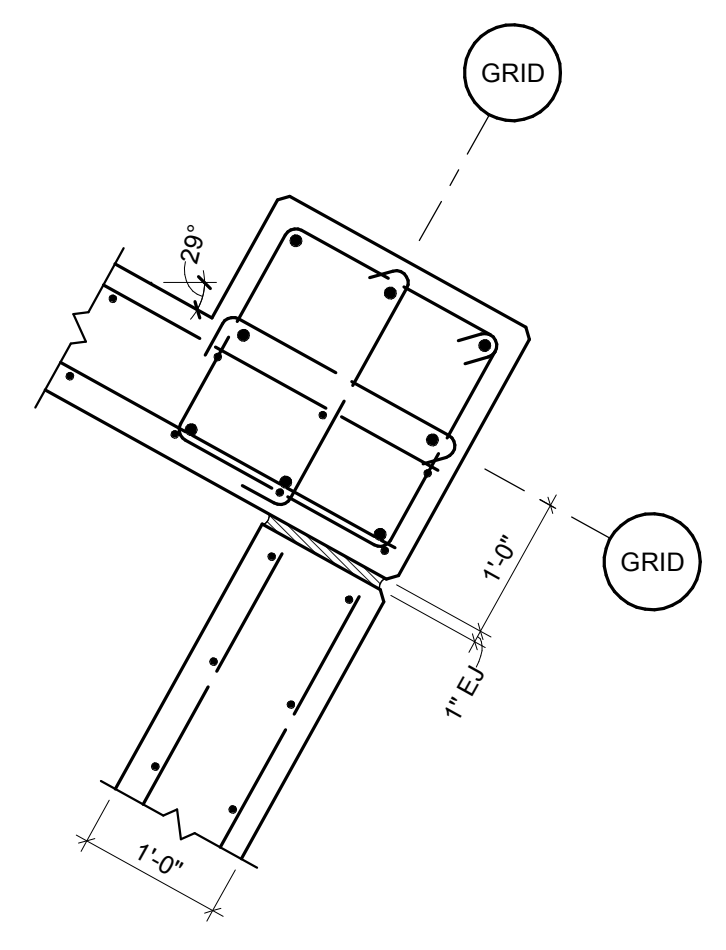
5 PLAN DETAIL
3/4" = 1'-0"



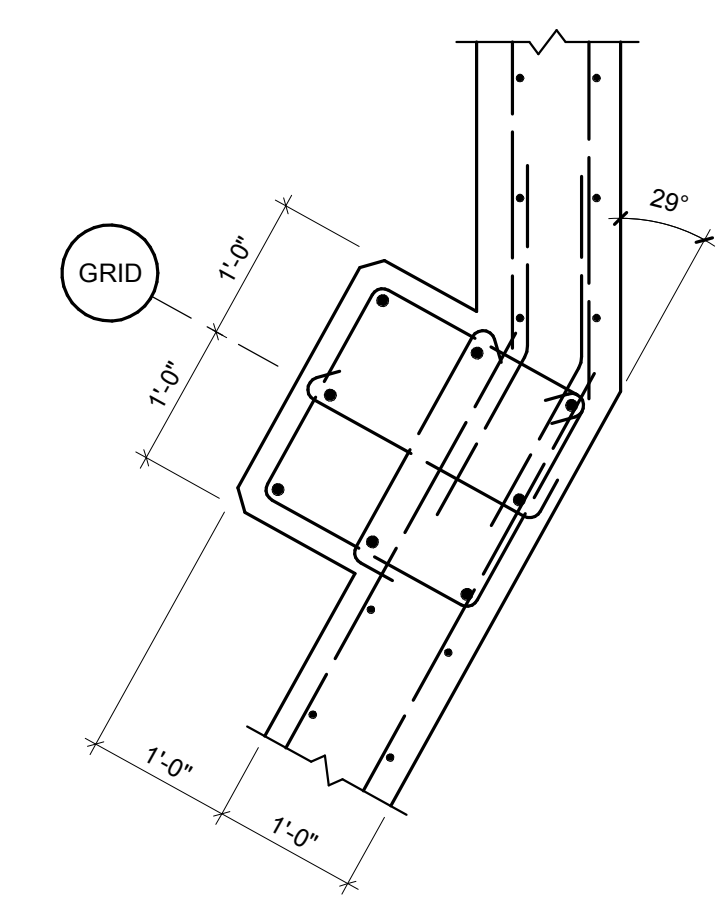
6 PLAN DETAIL
3/4" = 1'-0"



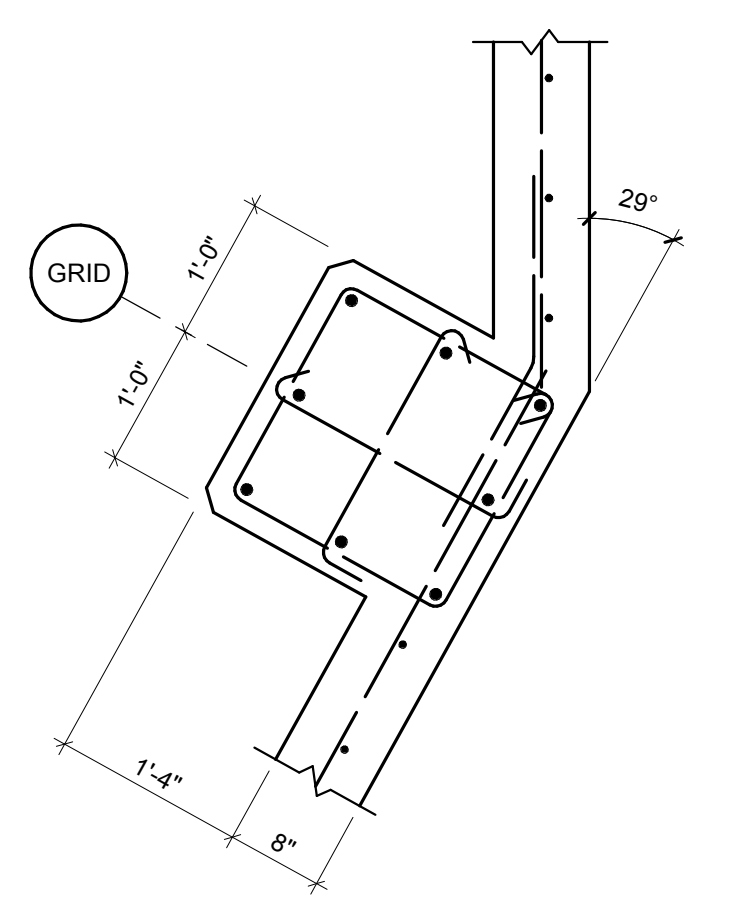
7 PLAN DETAIL
3/4" = 1'-0"



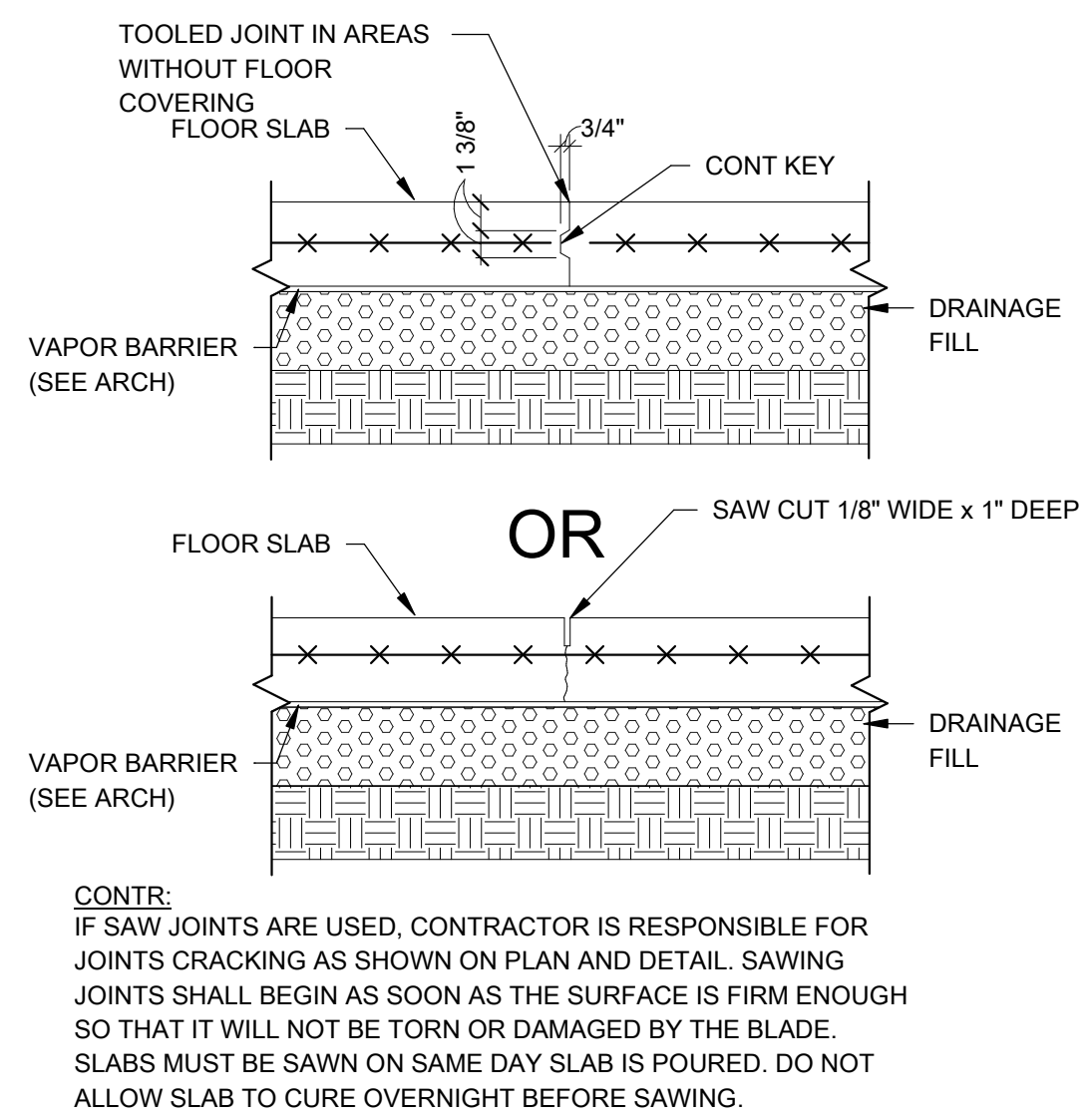
8 PLAN DETAIL
3/4" = 1'-0"



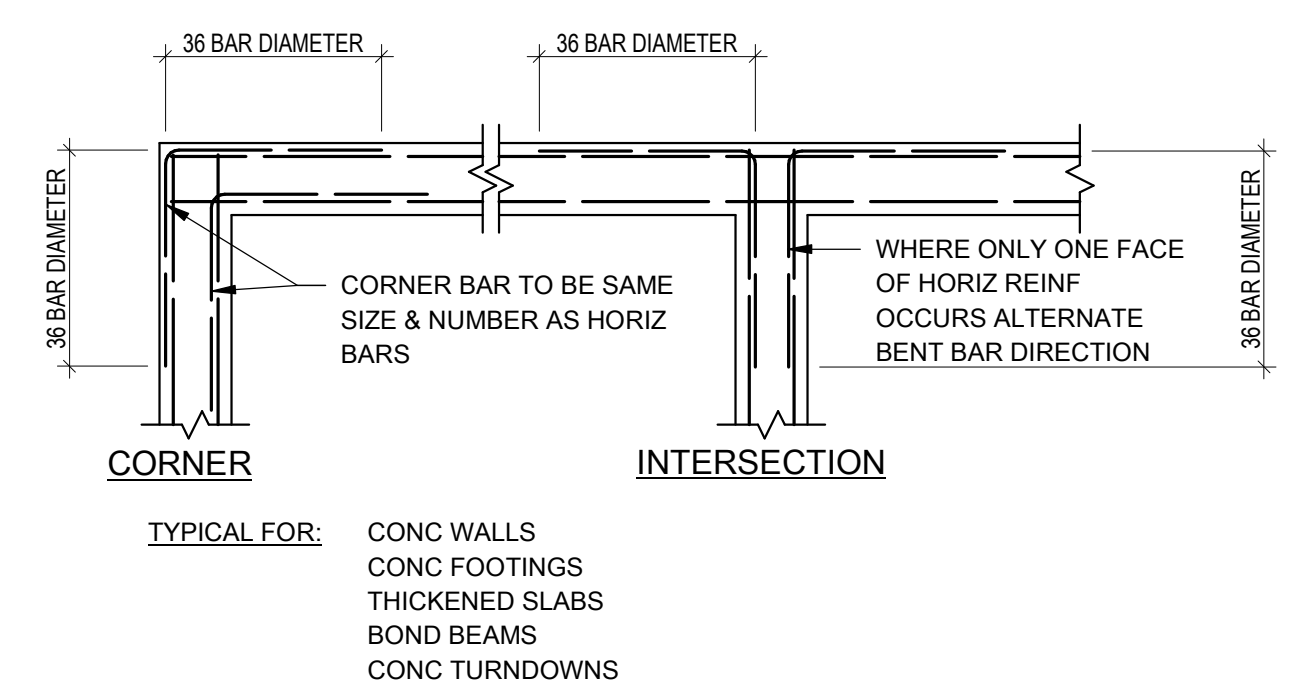
9 PLAN DETAIL
3/4" = 1'-0"



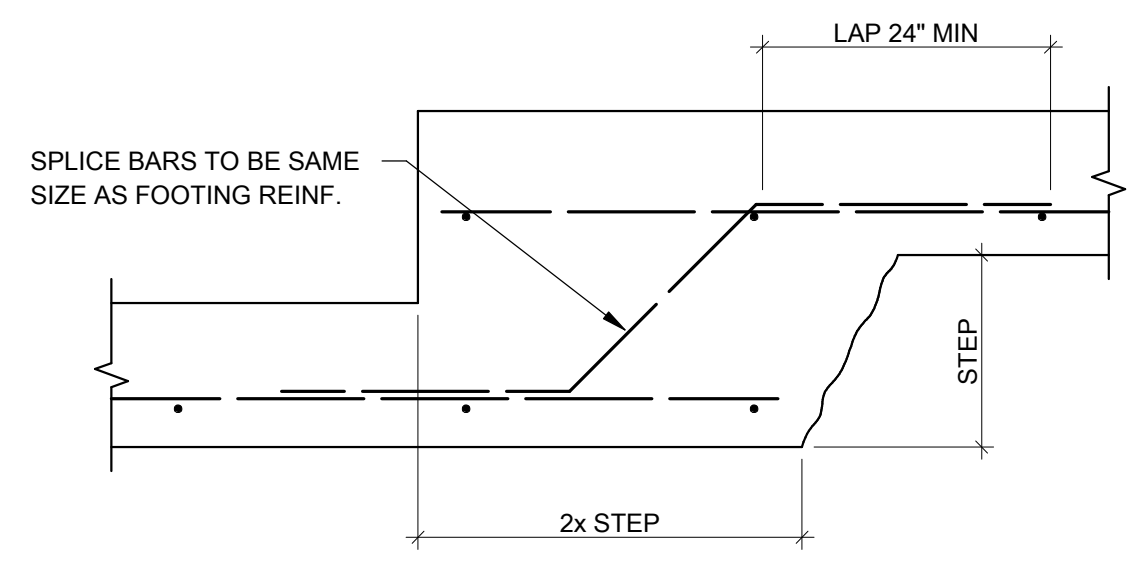
10 PLAN DETAIL
3/4" = 1'-0"



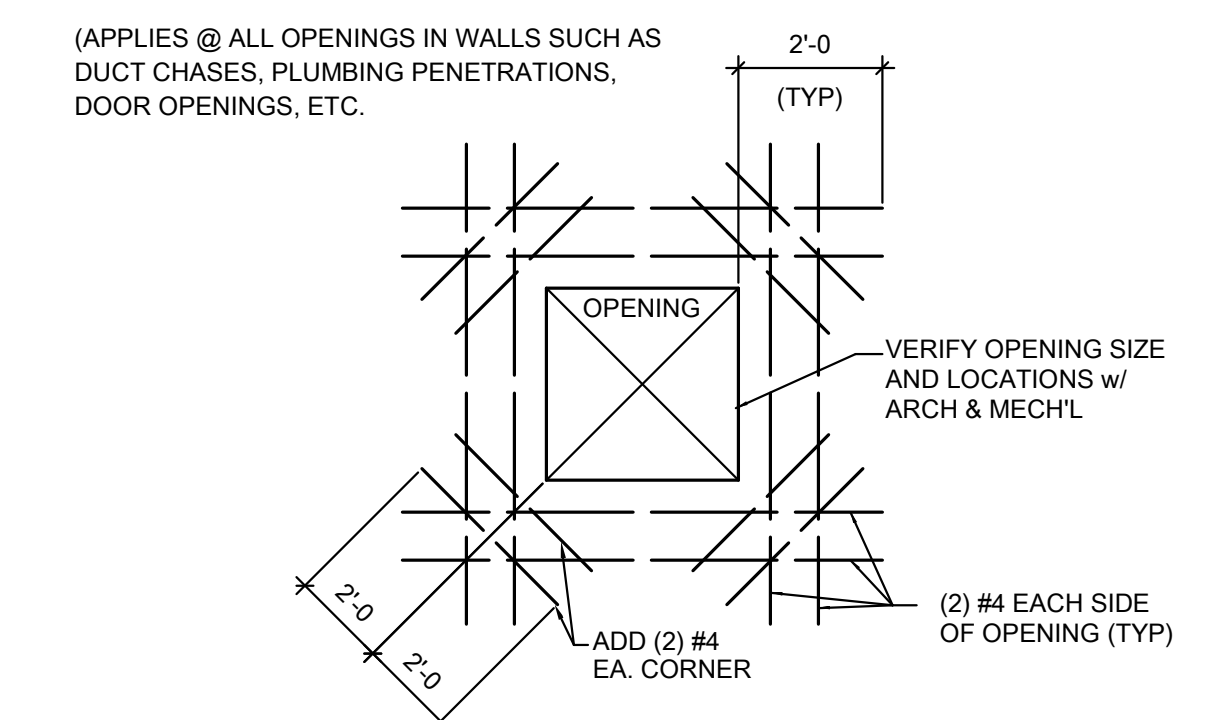
A CONTROL JOINT DETAIL
3/4" = 1'-0"



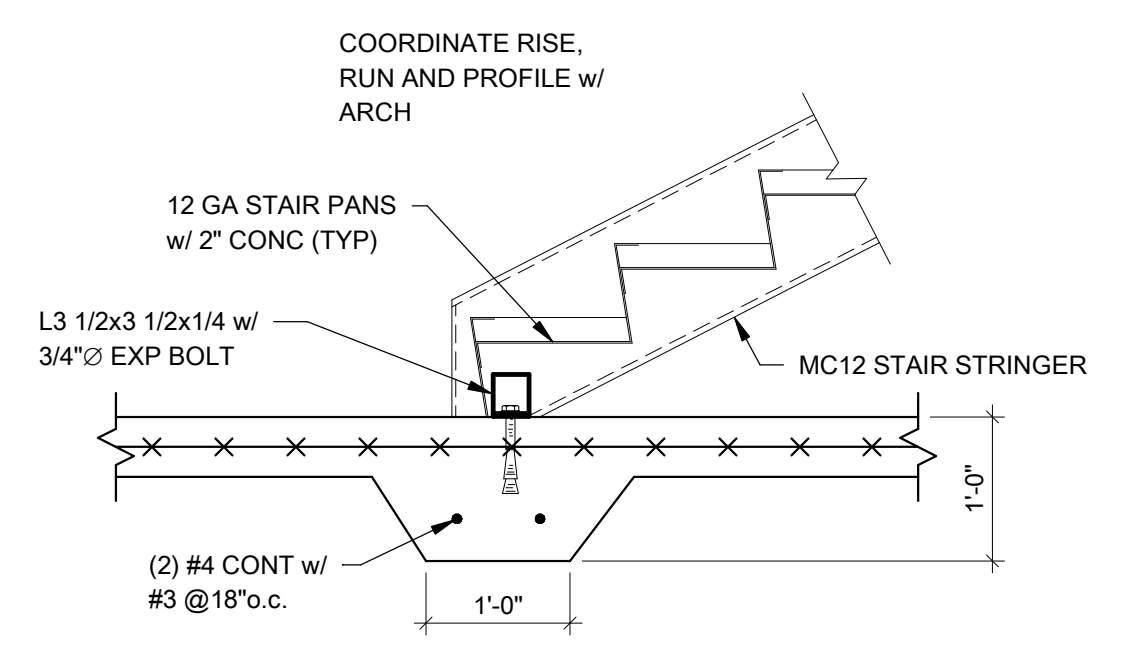
B TYPICAL CORNER BAR DETAIL
3/4" = 1'-0"



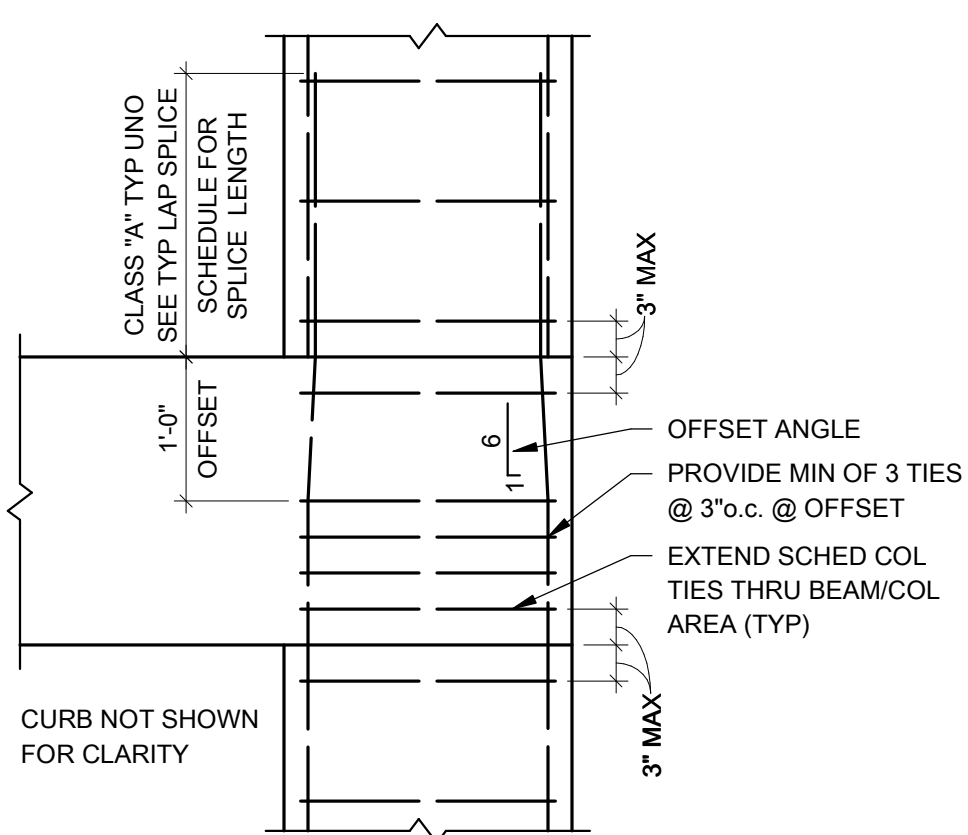
C CONT FOOTING STEP DETAIL
3/4" = 1'-0"



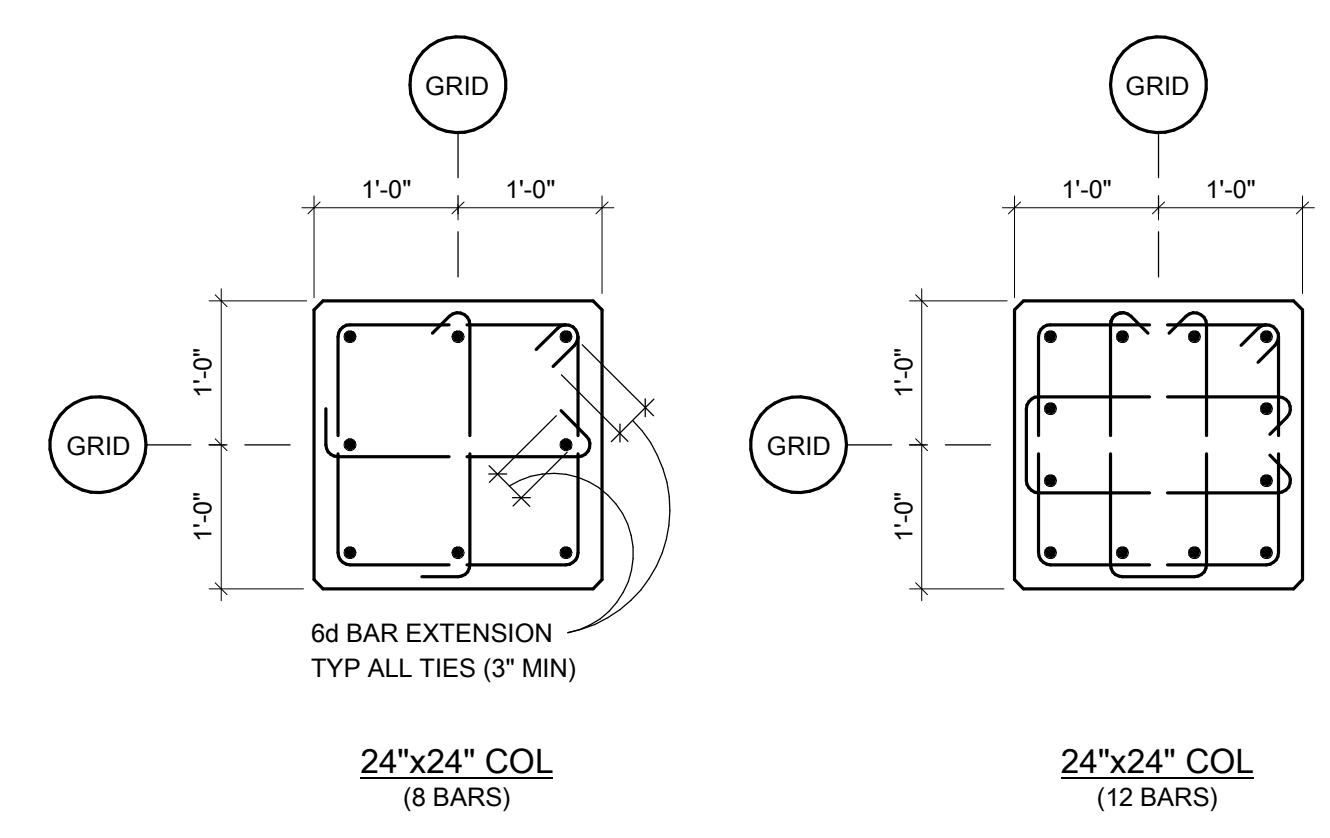
D TYPICAL REINFORCING @ OPENING IN WALL
3/4" = 1'-0"



E STAIR AT FOUNDATION
3/4" = 1'-0"



G COLUMN SPLICE DETAIL
3/4" = 1'-0"



F COLUMN REINFORCING DETAILS
3/4" = 1'-0"

CONCRETE COLUMN SCHEDULE

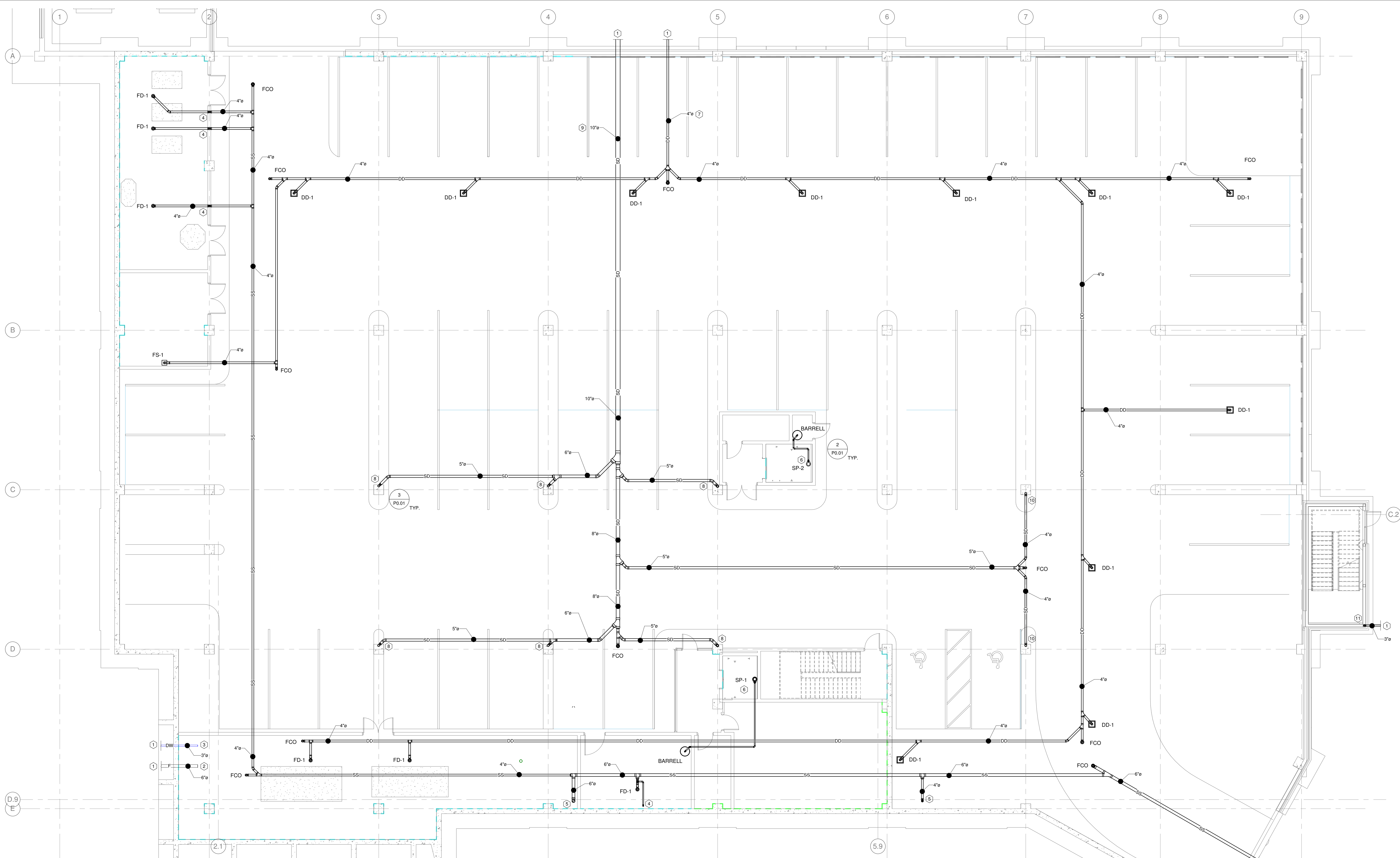
MARK	LA W	REINFORCEMENT
C1	24x24	(8) #8 VERT w/ #3 TIES @ 10" o.c.
C2	24x24	(12) #10 VERT w/ #3 TIES @ 10" o.c.

Engineering Consultants, Inc.
Structural Engineers

401 West Capitol Avenue, Suite 305
Little Rock, Arkansas 72201-3401
Phone No: (501) 376-3752
Fax No: (501) 376-7314
No. 8953

9/19/2016

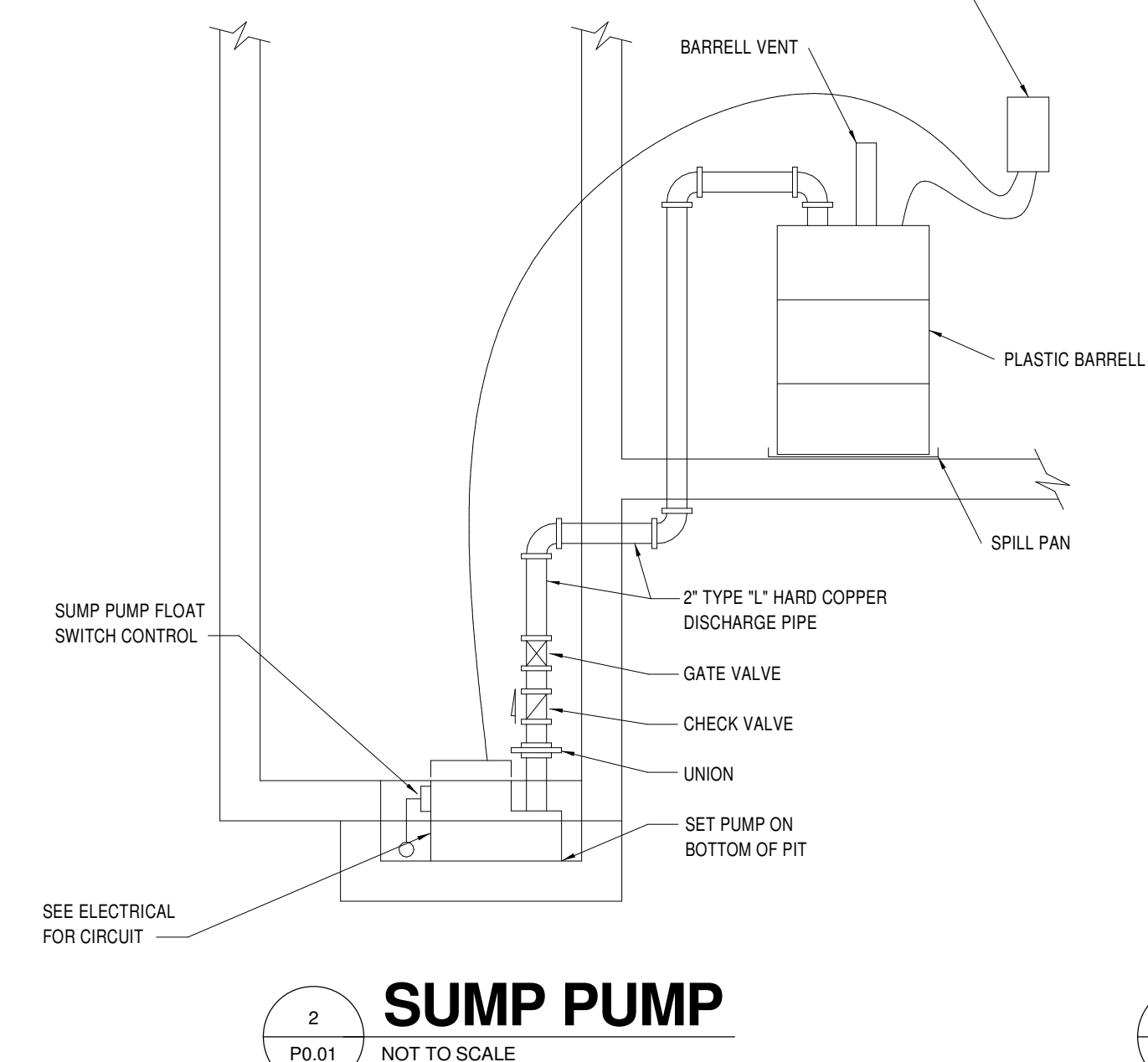
STATE OF ARKANSAS
REGISTERED PROFESSIONAL ENGINEER
No. 8953



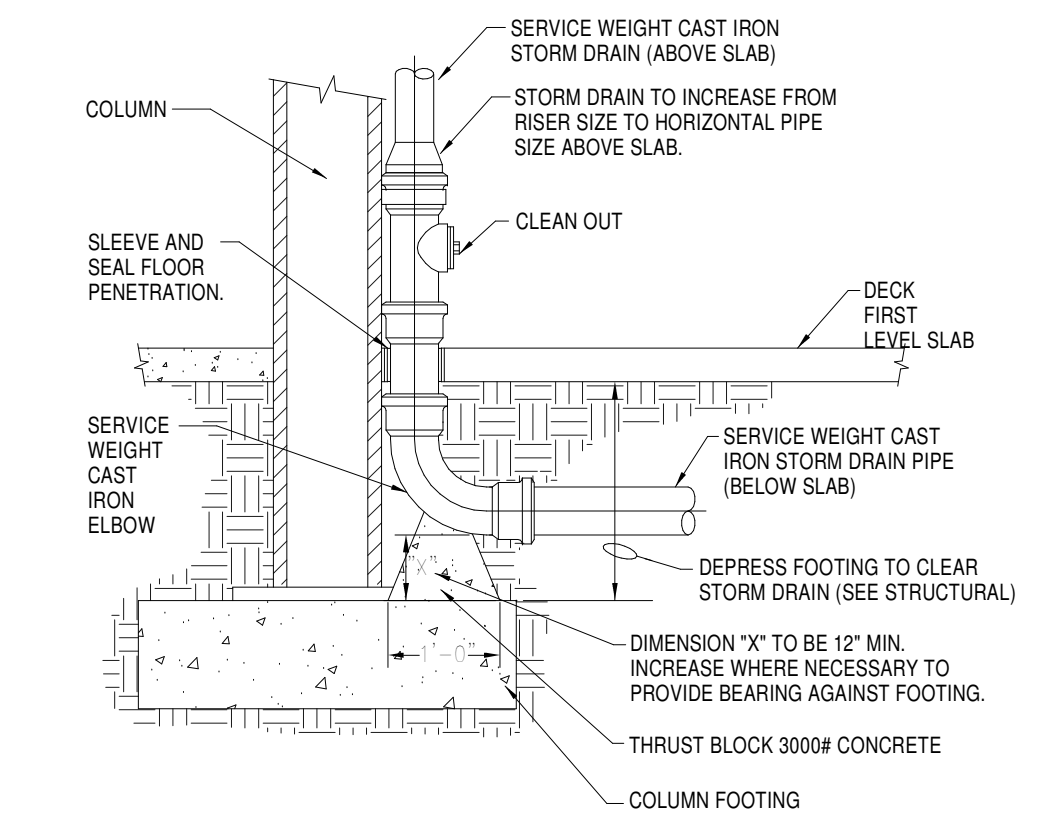
1 UNDERGROUND PLUMBING PLAN
 P0.01 1/8" = 1'-0"

MARK	DESCRIPTION	WASTE	C.W.	H.W.	MOUNTING	REMARKS
DD-1	DECK DRAIN	4"	---	---	DECK	EQUAL TO ZURN K237, 18" SQUARE PARKING DECK DRAIN, DURA-COATED CAST IRON BODY WITH BOTTOM OUTLET, HEAVY-DUTY GASKETED DRAIN SUPPORT FLANGE, WITH HEAVY-DUTY SLOTTED GRATE.
FD-1	FLOOR DRAIN	4"	---	---	FLOOR	EQUAL TO ZURN K2415 B. FLOOR DRAIN, DURA-COATED CAST IRON BODY WITH BOTTOM OUTLET, TYPE B POLISHED NICKLE BRONZE, LIGHT-DUTY STRAINER, PROVIDE WITH SURE SEAL TRAP PROTECTION.
FS-1	FLOOR SINK	4"	---	---	FLOOR	EQUAL TO ZURN K2190, RECEPTOR 12" X 12" X 6" DEEP CAST IRON BODY AND SQUARE LIGHT-DUTY GRATE WITH 1/2" SLOTTED OPENING, WITH INTERIOR BOTTOM DOME STRAINER.

- KEYED NOTES:**
- SEE CIVIL FOR CONTINUATION.
 - FIRE PROTECTION SERVICE MAIN, CAP WITHIN MECHANICAL ROOM. SLEEVE AND SEAL WALL PENETRATION.
 - DOMESTIC WATER SERVICE MAIN, CAP WITHIN MECHANICAL ROOM. SLEEVE AND SEAL WALL PENETRATION.
 - 2" SANITARY SEWER VENT STUBBED OUT ABOVE FLOOR.
 - SANITARY SEWER BRANCH LINE STUBBED OUT ABOVE FLOOR.
 - 2" SUMP PUMP DRAIN LINE ROUTED FROM ELEVATOR SUMP BELOW SLAB TO STUB UP ABOVE FLOOR IN MECHANICAL CLOSET.
 - PARKING DECK STORM DRAIN LINE.
 - 4" STORM DRAIN RISER, STUBBED OUT ABOVE FLOOR, INCREASE SIZE TO 5" ABOVE FLOOR BEFORE PIPE TURNS HORIZONTAL.
 - ROOF PRIMARY STORM DRAIN LINE.
 - 4" STORM DRAIN RISER STUBBED OUT ABOVE FLOOR.
 - 3" STORM DRAIN RISER STUBBED OUT ABOVE FLOOR.



2 SUMP PUMP
 P0.01 NOT TO SCALE



3 TYPICAL STORM DRAIN RISER
 P0.01 NOT TO SCALE

WITTENBERG, DELONY & DAVIDSON ARCHITECTS

PROJECT
FIRST NATIONAL BANK
HILLTOP BRANCH & OFFICE BUILDING
 3500 East Johnson Avenue, Jonesboro, Ar

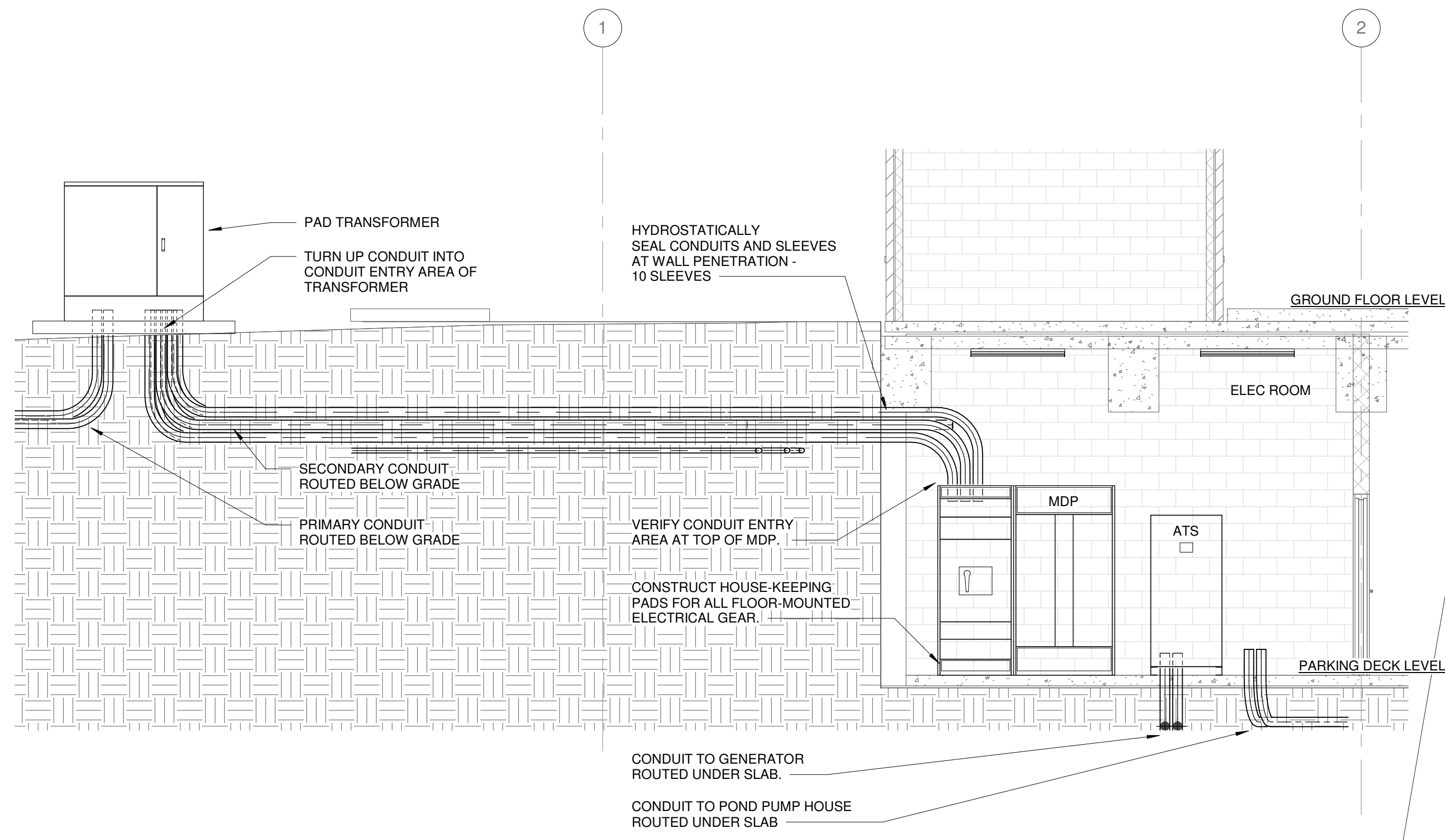
CONTENT
UNDERGROUND PLUMBING PACKAGE

REVISION

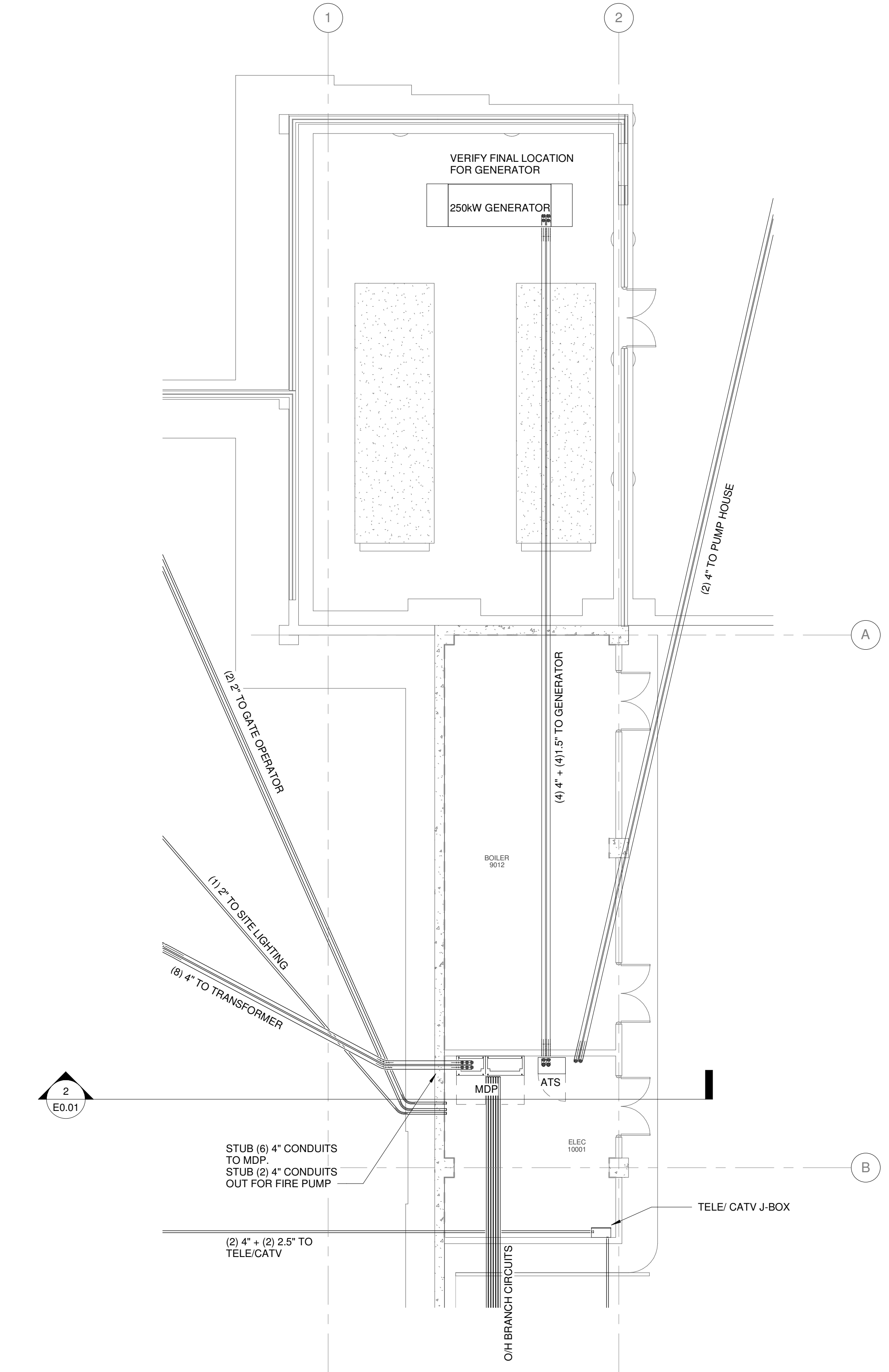
REV. NO.	DATE	DESCRIPTION
09-19-2016		

JOB
 16-028

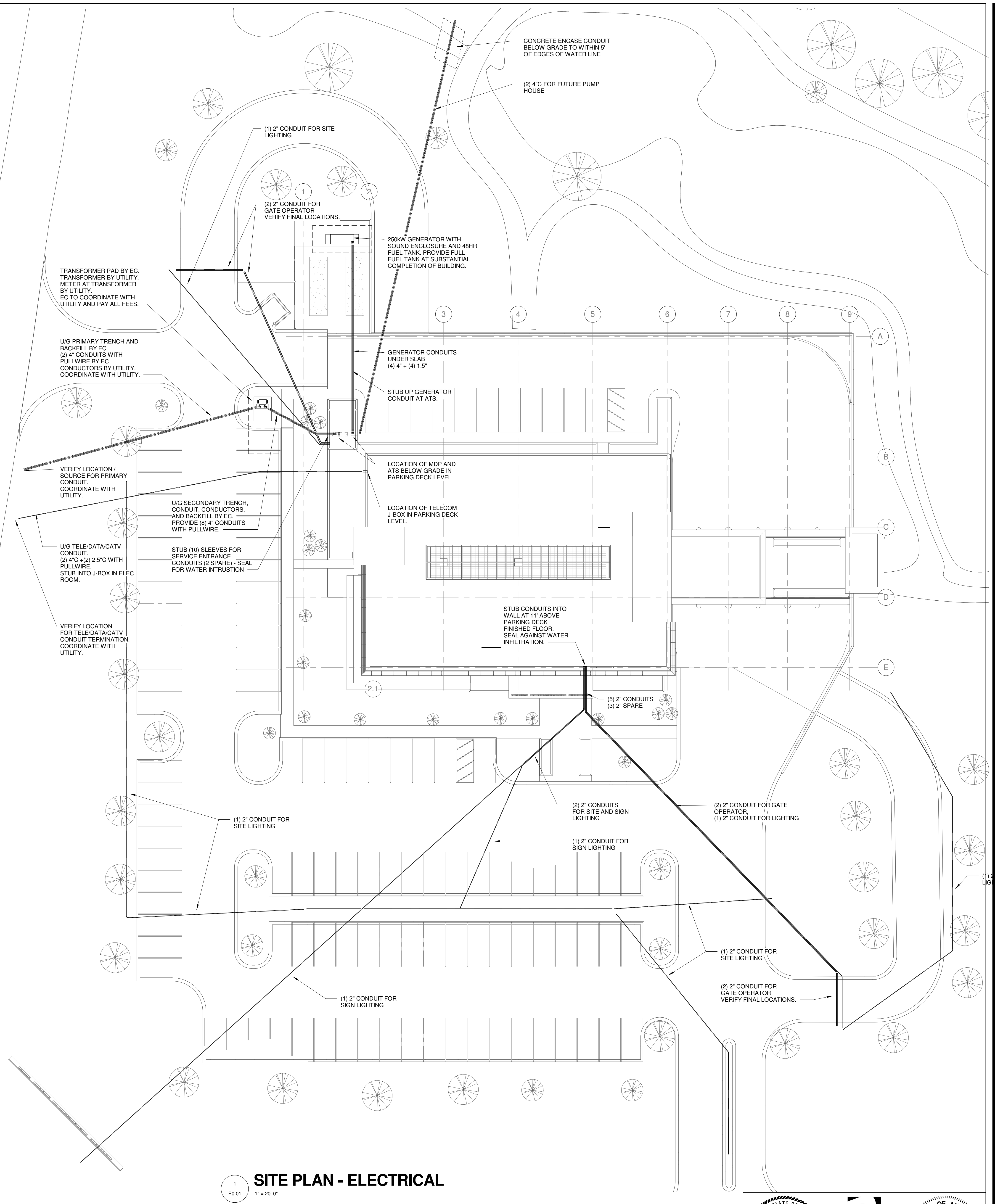
SHEET
P0.01



SECTION - ELECTRICAL SERVICE ENTRANCE
 2
 E0.01 1/4" = 1'-0"



PARTIAL PARKING LEVEL POWER PLAN
 3
 E0.01 1/8" = 1'-0"



SITE PLAN - ELECTRICAL
 1
 E0.01 1" = 20'-0"

STATE OF ARKANSAS
 REGISTERED PROFESSIONAL ENGINEER
 EDWARD J. BAYNE
 No. 9496
 8/19/16

Batson Inc.
 ENGINEERING SOLUTIONS
 1300 Brookwood Drive
 Little Rock, Arkansas 72202
 501-664-2111
 www.batson.com

STATE OF ARKANSAS
 CERTIFICATE OF AUTHORIZATION
 BATSON INC.
 No. 99
 ARKANSAS ENGINEER

WITTENBERG, DELONY & DAVIDSON ARCHITECTS

**FIRST NATIONAL BANK
 HILLTOP BRANCH & OFFICE BUILDING**
 3500 East Johnson Avenue, Jonesboro, Ar

UNDERGROUND ELECTRICAL PACKAGE

REVISION	REV. NO.	DATE	DESCRIPTION
	09-19-2016		

JOB
 16-028

SHEET
 E0.01