

01-144281-01600
LOT 1, ALLEN SUBDIVISION

NORTHWEST CORNER OF LOT 1,
BLOCK A, SWAN SUBDIVISION

LESS AND EXCEPT

FOUND 5/8" REBAR
(NORTH 0.5', WEST 0.3')

50' R.O.W.

10' UNSPECIFIED
EASEMENT

TRACT 1
01-144281-50100
LOT 1, BLOCK A,
SWAN SUBDIVISION

TRACT 2
01-144281-14400
LOT 1, BLOCK A,
FAIRVIEW ACRES

10' UNSPECIFIED EASEMENT
(FUTURE ABANDONMENT
AND RELOCATION)

FOUND IRON PIN
(NORTH 1.4', WEST 2.1')
FOUND 5/8" REBAR
(NORTH 2.3', EAST 0.9')

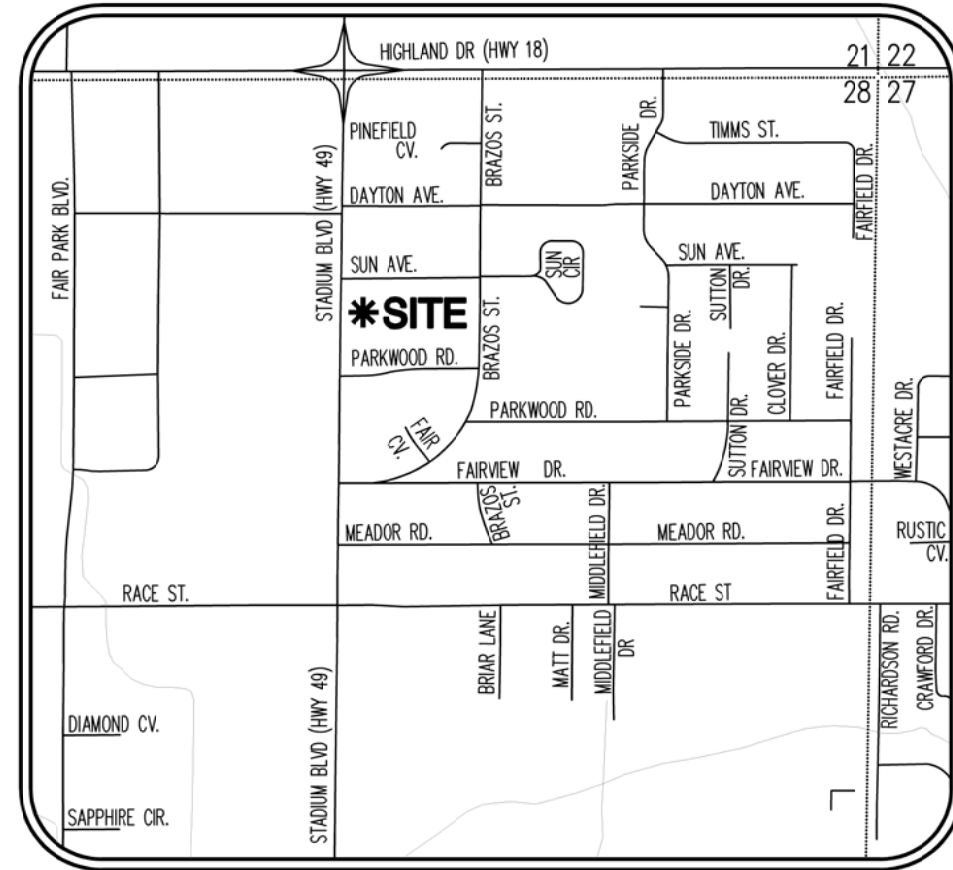
FOUND 5/8" REBAR
(SOUTH 0.4', EAST 0.8')

50' R.O.W.

30' R.O.W.

PARKWOOD ROAD
(☒ ASPHALT SURFACE)

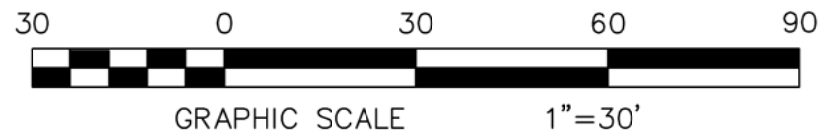
U.S. HIGHWAY NO. 49
STADIUM BOULEVARD
(☒ ASPHALT SURFACE)



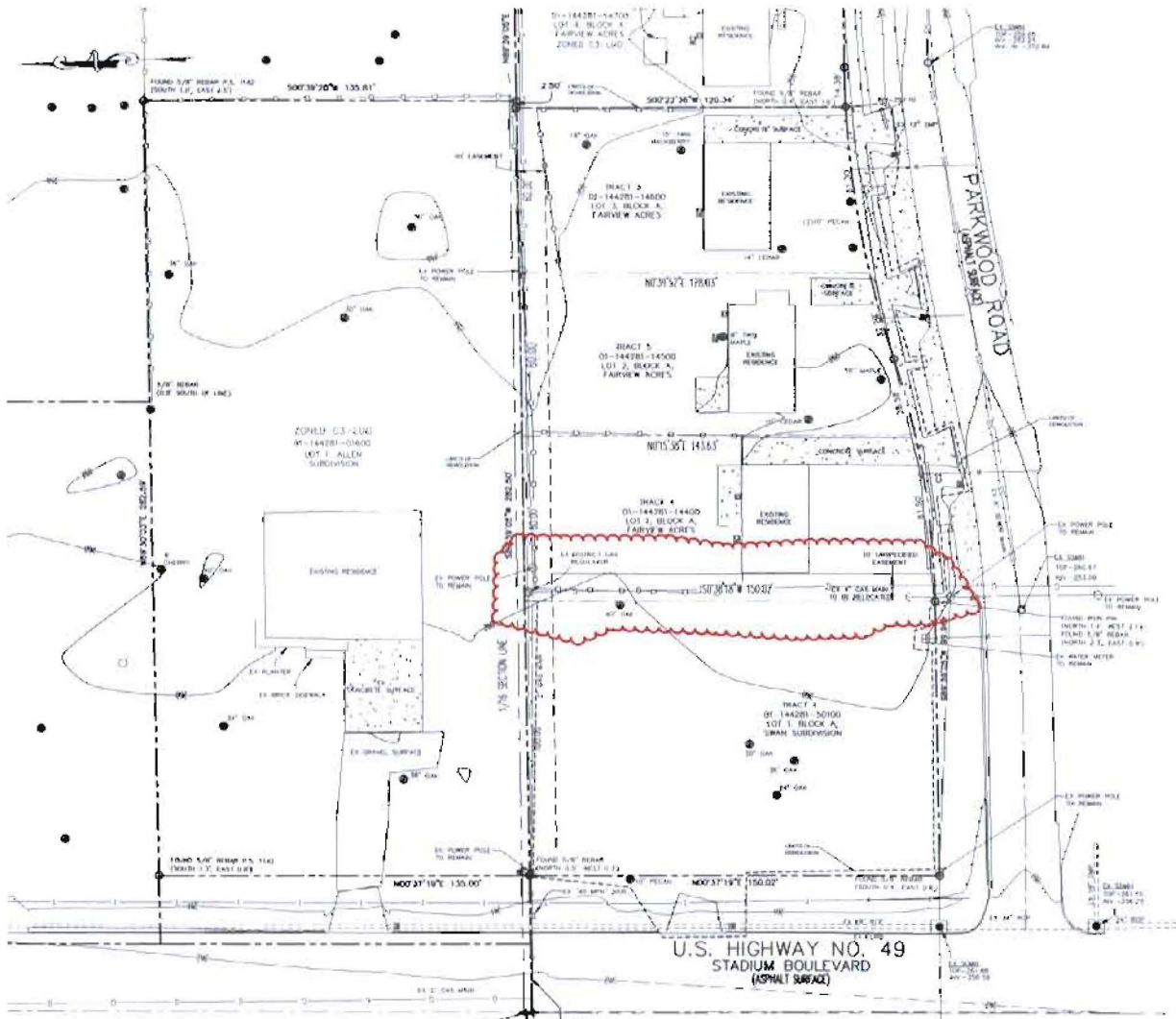
VICINITY MAP
(NOT TO SCALE)

EASEMENT TO BE ABANDONED:

THAT PART OF A 10 FOOT UNSPECIFIED EASEMENT BEING THE WEST 10 FEET, OF LOT 1 IN BLOCK "A" OF FAIRVIEW ACRES SUBDIVISION IN THE CITY OF JONESBORO, ARKANSAS, AS SHOWN BY PLAT IN DEED RECORD 123, PAGE 126, SUBJECT TO BILL OF ASSURANCE IN DEED RECORD 149, PAGE 98, AT JONESBORO, ARKANSAS, AND TO EASEMENTS AS SHOWN ON SAID PLAT; (3004 PARKWOOD). LESS AND EXCEPT THE NORTH 10 FEET THERE OF.



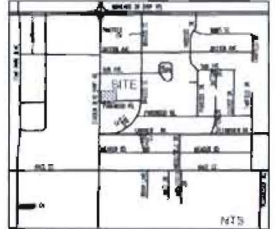
COPYRIGHT 2012, ALL RIGHTS RESERVED	CLIENT EBBERT RENTALS	EASEMENT ABANDONMENT	REVISIONS	
			DATE	BY DESCRIPTION
			SURVEY INDEX CODE	
			PROJECT NO. E010-0002	
			DRAWN BY MAB	CHECKED BY MAB
			SHEET 1 OF 1	SCALE 1"=30'
			DATE 9/13/12	DRAWING NO.
HAYWOOD, KENWARD, BARE & ASSOCIATES, INC. CIVIL ENGINEERING — SURVEYING — PLANNING 1801 LATOURETTE DRIVE JONESBORO, ARKANSAS 72404 TEL 870-932-2019 FAX 870-932-1076				



CURVE TABLE					
CURVE #	LENGTH	RADIUS	DELTA	CHORD DIRECTION	CHORD LENGTH
C1	108.41	393.47	17°32'28"	S80°59'49"W	407.99
C2	99.98	295.49	17°28'57"	S80°59'49"W	407.72

ALL EXISTING STRUCTURES, ASPHALT, CURB AND UTILITIES WITHIN THE LIMITS (DEMO LINE) SHALL BE DEMOLISHED AND REMOVED FROM SITE.

ALL EXISTING TREES SHALL BE REMOVED FROM SITE.

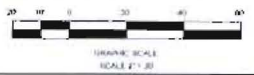


NOTES:

1. THE INFORMATION CONTAINED HEREON IS BASED UPON THE RECORD PLANS AND SURVEY DATA PROVIDED TO THE ENGINEER BY THE CLIENT. THE ENGINEER HAS CONDUCTED A VISUAL GENERAL VERIFICATION OF THE INFORMATION PROVIDED AND HAS FOUND IT TO BE REASONABLY ACCURATE. THE ENGINEER DOES NOT WARRANT THE ACCURACY OF THE INFORMATION PROVIDED.
2. THE ENGINEER HAS CONDUCTED A VISUAL GENERAL VERIFICATION OF THE INFORMATION PROVIDED AND HAS FOUND IT TO BE REASONABLY ACCURATE. THE ENGINEER DOES NOT WARRANT THE ACCURACY OF THE INFORMATION PROVIDED.
3. THE ENGINEER HAS CONDUCTED A VISUAL GENERAL VERIFICATION OF THE INFORMATION PROVIDED AND HAS FOUND IT TO BE REASONABLY ACCURATE. THE ENGINEER DOES NOT WARRANT THE ACCURACY OF THE INFORMATION PROVIDED.
4. THE ENGINEER HAS CONDUCTED A VISUAL GENERAL VERIFICATION OF THE INFORMATION PROVIDED AND HAS FOUND IT TO BE REASONABLY ACCURATE. THE ENGINEER DOES NOT WARRANT THE ACCURACY OF THE INFORMATION PROVIDED.
5. THE ENGINEER HAS CONDUCTED A VISUAL GENERAL VERIFICATION OF THE INFORMATION PROVIDED AND HAS FOUND IT TO BE REASONABLY ACCURATE. THE ENGINEER DOES NOT WARRANT THE ACCURACY OF THE INFORMATION PROVIDED.
6. THE ENGINEER HAS CONDUCTED A VISUAL GENERAL VERIFICATION OF THE INFORMATION PROVIDED AND HAS FOUND IT TO BE REASONABLY ACCURATE. THE ENGINEER DOES NOT WARRANT THE ACCURACY OF THE INFORMATION PROVIDED.
7. THE ENGINEER HAS CONDUCTED A VISUAL GENERAL VERIFICATION OF THE INFORMATION PROVIDED AND HAS FOUND IT TO BE REASONABLY ACCURATE. THE ENGINEER DOES NOT WARRANT THE ACCURACY OF THE INFORMATION PROVIDED.
8. THE ENGINEER HAS CONDUCTED A VISUAL GENERAL VERIFICATION OF THE INFORMATION PROVIDED AND HAS FOUND IT TO BE REASONABLY ACCURATE. THE ENGINEER DOES NOT WARRANT THE ACCURACY OF THE INFORMATION PROVIDED.
9. THE ENGINEER HAS CONDUCTED A VISUAL GENERAL VERIFICATION OF THE INFORMATION PROVIDED AND HAS FOUND IT TO BE REASONABLY ACCURATE. THE ENGINEER DOES NOT WARRANT THE ACCURACY OF THE INFORMATION PROVIDED.
10. THE ENGINEER HAS CONDUCTED A VISUAL GENERAL VERIFICATION OF THE INFORMATION PROVIDED AND HAS FOUND IT TO BE REASONABLY ACCURATE. THE ENGINEER DOES NOT WARRANT THE ACCURACY OF THE INFORMATION PROVIDED.
11. THE ENGINEER HAS CONDUCTED A VISUAL GENERAL VERIFICATION OF THE INFORMATION PROVIDED AND HAS FOUND IT TO BE REASONABLY ACCURATE. THE ENGINEER DOES NOT WARRANT THE ACCURACY OF THE INFORMATION PROVIDED.
12. THE ENGINEER HAS CONDUCTED A VISUAL GENERAL VERIFICATION OF THE INFORMATION PROVIDED AND HAS FOUND IT TO BE REASONABLY ACCURATE. THE ENGINEER DOES NOT WARRANT THE ACCURACY OF THE INFORMATION PROVIDED.
13. THE ENGINEER HAS CONDUCTED A VISUAL GENERAL VERIFICATION OF THE INFORMATION PROVIDED AND HAS FOUND IT TO BE REASONABLY ACCURATE. THE ENGINEER DOES NOT WARRANT THE ACCURACY OF THE INFORMATION PROVIDED.
14. THE ENGINEER HAS CONDUCTED A VISUAL GENERAL VERIFICATION OF THE INFORMATION PROVIDED AND HAS FOUND IT TO BE REASONABLY ACCURATE. THE ENGINEER DOES NOT WARRANT THE ACCURACY OF THE INFORMATION PROVIDED.
15. THE ENGINEER HAS CONDUCTED A VISUAL GENERAL VERIFICATION OF THE INFORMATION PROVIDED AND HAS FOUND IT TO BE REASONABLY ACCURATE. THE ENGINEER DOES NOT WARRANT THE ACCURACY OF THE INFORMATION PROVIDED.
16. THE ENGINEER HAS CONDUCTED A VISUAL GENERAL VERIFICATION OF THE INFORMATION PROVIDED AND HAS FOUND IT TO BE REASONABLY ACCURATE. THE ENGINEER DOES NOT WARRANT THE ACCURACY OF THE INFORMATION PROVIDED.
17. THE ENGINEER HAS CONDUCTED A VISUAL GENERAL VERIFICATION OF THE INFORMATION PROVIDED AND HAS FOUND IT TO BE REASONABLY ACCURATE. THE ENGINEER DOES NOT WARRANT THE ACCURACY OF THE INFORMATION PROVIDED.
18. THE ENGINEER HAS CONDUCTED A VISUAL GENERAL VERIFICATION OF THE INFORMATION PROVIDED AND HAS FOUND IT TO BE REASONABLY ACCURATE. THE ENGINEER DOES NOT WARRANT THE ACCURACY OF THE INFORMATION PROVIDED.
19. THE ENGINEER HAS CONDUCTED A VISUAL GENERAL VERIFICATION OF THE INFORMATION PROVIDED AND HAS FOUND IT TO BE REASONABLY ACCURATE. THE ENGINEER DOES NOT WARRANT THE ACCURACY OF THE INFORMATION PROVIDED.
20. THE ENGINEER HAS CONDUCTED A VISUAL GENERAL VERIFICATION OF THE INFORMATION PROVIDED AND HAS FOUND IT TO BE REASONABLY ACCURATE. THE ENGINEER DOES NOT WARRANT THE ACCURACY OF THE INFORMATION PROVIDED.

- LEGEND**
- UTILITY POLE
 - LIGHT POLE
 - CURB MARK
 - WATER METER
 - WATER VALVE
 - WATER VALVE
 - SAFETY BARRIER MARK
 - STORM DRAIN MANHOLE
 - TELEPHONE PEG/POST
 - GAS METER
 - GAS REGULATOR
 - SIGN (AS NOTED)
 - TREE (AS NOTED)
 - MAILBOX
 - CONCRETE ELECTRIC LINE
 - WATER LINE
 - SANITARY SEWER LINE
 - TELECOMMUNICATIONS LINE
 - GAS LINE
 - FENCE LINE

ARKANSAS ONE CALL
CALL BEFORE YOU DIG
1-800-452-9999



SITE DEVELOPMENT PLANS for CONCORD PROPERTIES INC.

PROJECT NAME: CONCORD PROPERTIES
 SHEET TITLE: EXISTING CONDITIONS & DEMOLITION PLAN
 SHEET NUMBER: 2
 PROJECT NUMBER: 12010CPI
 DATE: 8/24/12

REGISTERED PROFESSIONAL ENGINEER
 REGISTERED PROFESSIONAL ENGINEER
CARTER ENGINEERING CONSULTANTS
 1211 S. ROUTE 441
 BENTON, AR 72015
 501-325-1100
 www.cartereng.com