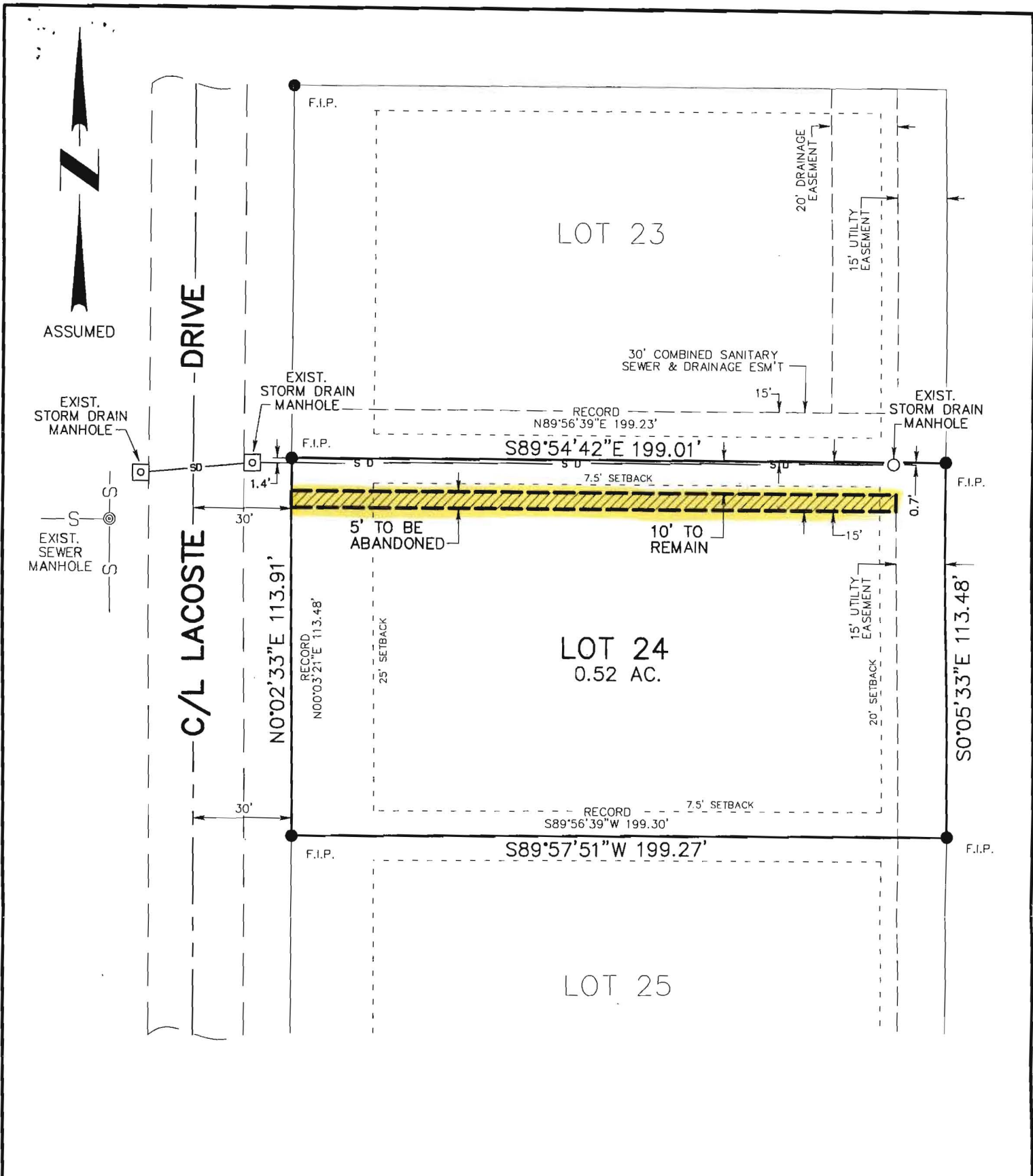


RidgePointe
Country Club

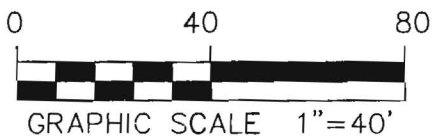
PHASE III REVISED

JONESBORO, ARKANSAS

2 of 8



THE SOUTH 5.00' OF THE NORTH 15.00' OF LOT 24, BLOCK B, RIDGE POINTE, PHASE III REVISED, OF JONESBORO, ARKANSAS, LYING WEST OF A 15.00' UTILITY EASEMENT ALONG THE EAST LINE OF AFORESAID LOT 24.



EASEMENT ABANDONMENT

LOT 24, BLOCK B
RIDGEPOINTE, PHASE III REVISED
JONESBORO, ARKANSAS

HAYWOOD, KENWARD, BARE & ASSOCIATES, INC.
CIVIL ENGINEERING - SURVEYING - PLANNING

3301 E. HIGHLAND DRIVE
JONESBORO, ARKANSAS 72401

TEL 870-932-2019

FAX 870-932-1076

REVISIONS

DATE	BY	DESCRIPTION

DRAWN BY	SHEET
J.H.B.	1 OF 1

DATE	SCALE
06/18/03	1"=40'

JOB NO.	DRAWING NO.
100412	R-173

CLIENT
JOHN LOVELESS

THIS IS NOT A
BOUNDARY SURVEY