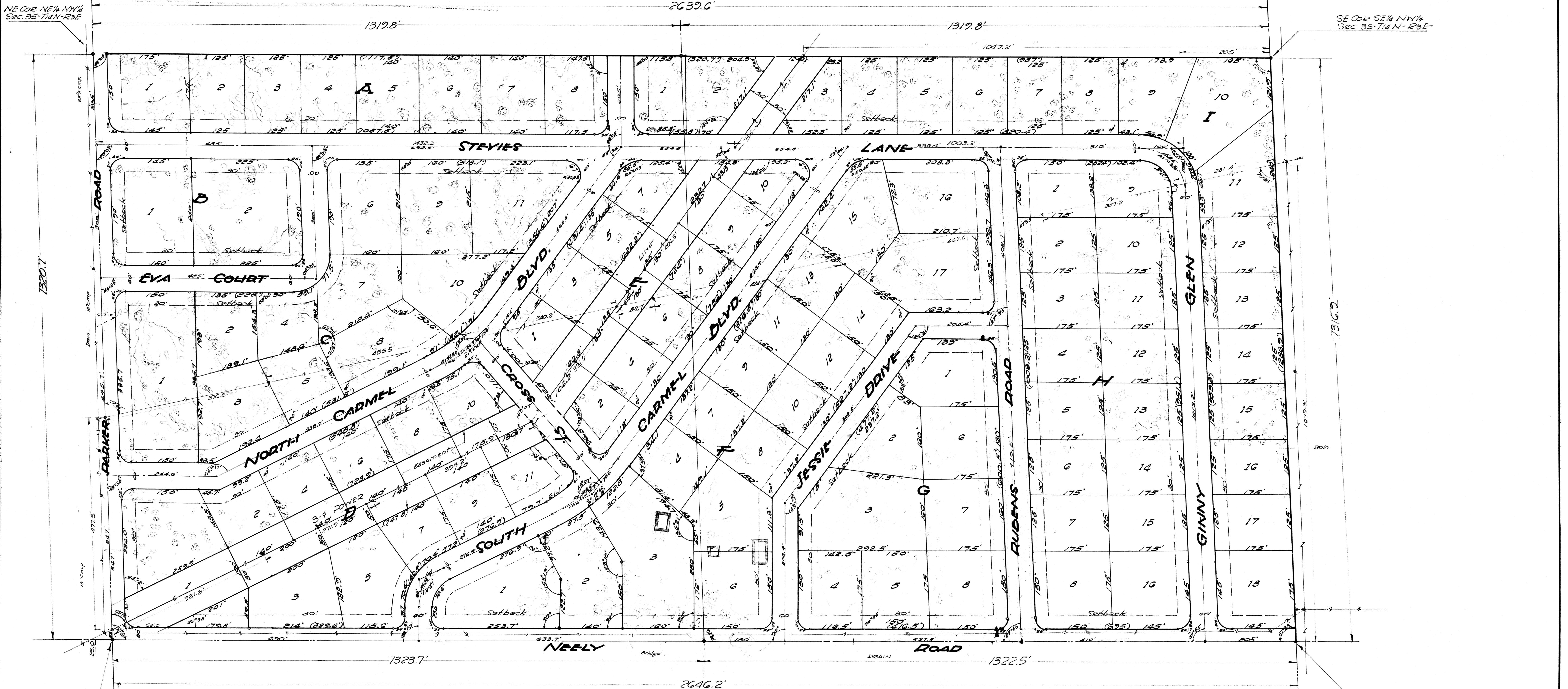
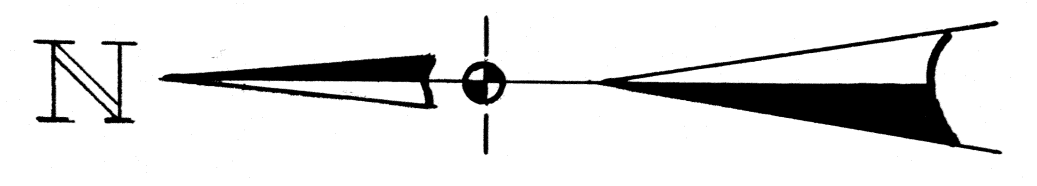
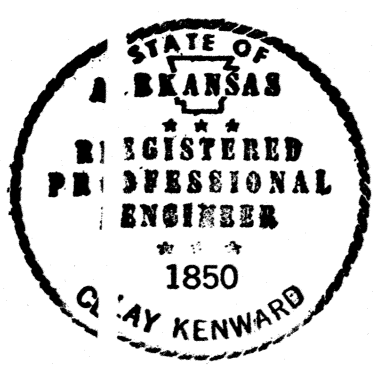




CERTIFICATE OF SURVEY

This is to certify that Fred Haywood & Associate, Registered Professional Civil Engineers, have surveyed the EM of the NW 1/4 of Sec. 35 T14N R3E, Craighead Co., Arkansas being more particularly as follows; Begin at the Northeast corner of the NW 1/4 of NW 1/4 of Sec. 35 T14N R3E thence West on the Section line 1320.7' to the Northwest corner of NW 1/4 of the NW 1/4 of Sec. 35 aforesaid; thence S1°50'W along the West line of the NW 1/4 of Sec. 35 aforesaid 2646.2' to the Southwest corner of SE 1/4 of Sec. 35; thence N89°45'E along the South line of the NW 1/4 of Sec. 35 T14N R3E 1316.9' to the Southeast corner of SE 1/4 of the NW 1/4 of Sec. 35 aforesaid; thence N1°55'E along the East line of NW 1/4 of the NW 1/4 of Sec. 35 aforesaid 2639.6' to the point of beginning. The above described tract contains 80.01 acres.

Fred Haywood & Associate
By *Fred Haywood*
Reg. C.E. #459



NE COR NW 1/4 NW 1/4 Sec. 35-T14N-R3E

SE COR SE 1/4 NW 1/4 Sec. 35-T14N-R3E

NW COR NE 1/4 NW 1/4 Sec. 35-T14N-R3E

SW COR SE 1/4 NW 1/4 Sec. 35-T14N-R3E

GRIFFIN SUBDIVISION
OF
1/2 OF NW 1/4 SEC. 35 T14N R3E
CRAIGHEAD CO., ARK.
Scale 1"=100'
Surveyed 2-14-68 By
FRED HAYWOOD & ASSOC.

CALDWELL - GRIFFIN TRACT		
FRED HAYWOOD & ASSOCIATES Consulting Engineers - Jonesboro, Ark.	SCALE 1"=100'	DRAWN BY C.K.
NE 1/4 NW 1/4 - SE 1/4 NW 1/4 - SEC. 35-14-3		
DATE 2-14-68	APPROVED BY	DRAWING NUMBER Y-138



CERTIFICATE OF SURVEY

This is to certify that Fred Haywood & Associate, Registered Professional Civil Engineers, have surveyed the E/2 of the NW/4 of Sec. 35 T14N R3E, Craighead Co., Arkansas being more particularly as follows: Begin at the Northeast corner of the NW/4 of NW/4 of Sec. 35 T14N R3E thence West on the Section line 1320.7' to the Northwest corner of NW/4 of the NW/4 of Sec. 35 aforesaid; thence S1°30'W along the East line of the E/2 of the NW/4 of Sec. 35 aforesaid 2646.2' to the Southwest corner of SE/4 of Sec. 35; thence N89°43'E along the South line of the E/2 of NW/4 of Sec. 35 aforesaid 1316.9' to the Southeast corner of SE/4 of the NW/4 of Sec. 35 aforesaid; thence N1°35'E along the East line of E/2 of the NW/4 of Sec. 35 aforesaid 2639.6' to the point of beginning.

The above described tract contains 80.01 acres.

Fred Haywood & Associate
By *[Signature]*
Eng. C.E. 7488

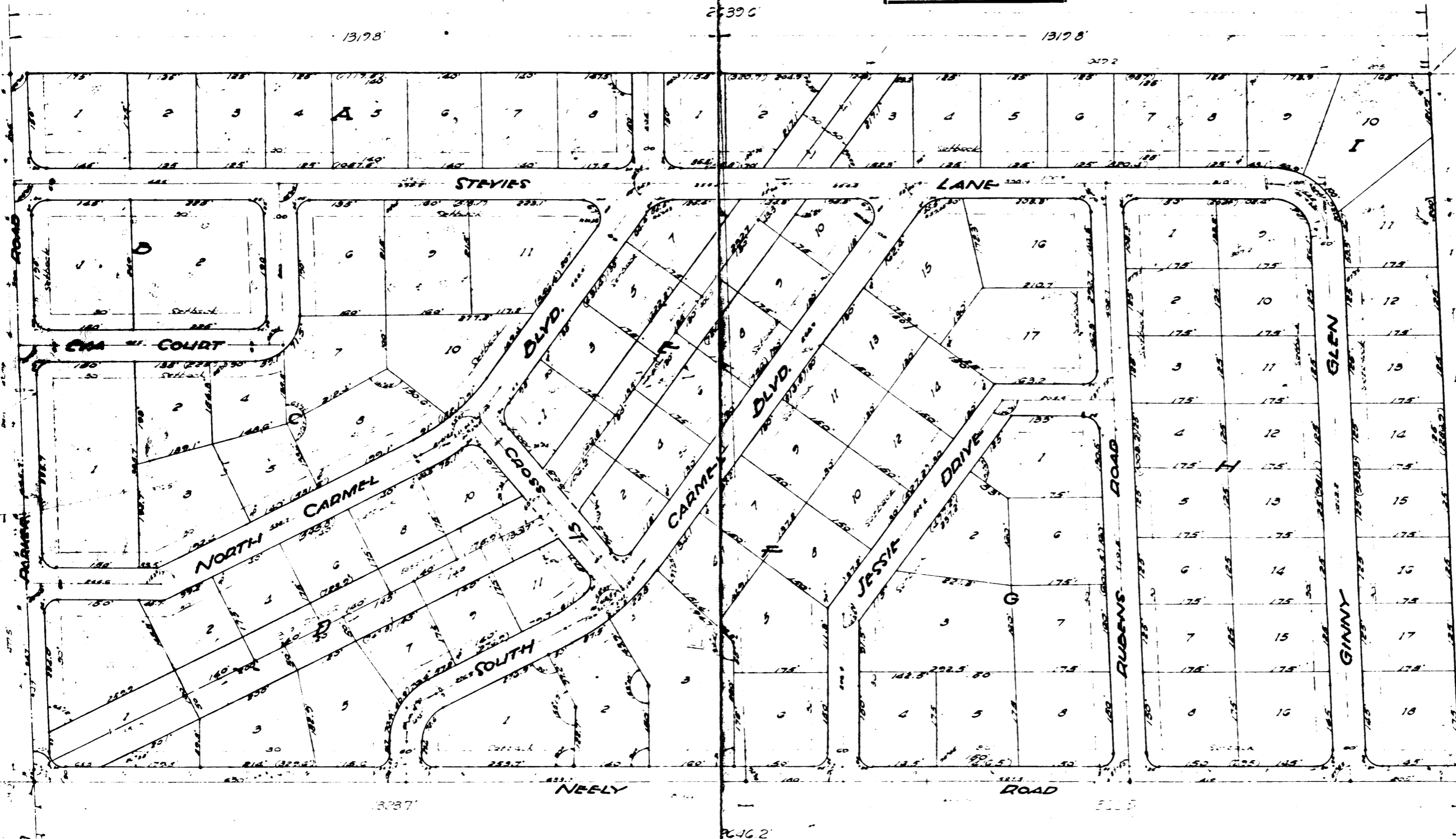


J. L. SCRAPE, JR.
REGISTERED
LAND SURVEYOR
STATE OF
ARKANSAS
NO. 515

SIGNATURE

NE 1/4 NW 1/4 Sec 35 T14N R3E

SE 1/4 NW 1/4 Sec 35 T14N R3E



APPROVED

Jonesboro City Planning Commission

Date **5.9.68**

Chairman *[Signature]*

Secretary *[Signature]*

For Dedication and Bill of Assurance See D.R. Book 170 Page 513.

GRIFFIN SUBDIVISION
OF
E/2 OF NW/4 SEC. 35 T14N R3E
CRAIGHEAD CO., ARK.

FILED FOR RECORD THIS JUNE 6, 1968 at 3:00 P.M. and RECORDED IN PLAT DEED RECORD BOOK 158, PAGE 52.

Scale 1"=100'
Surveyed 2-14-68 by
FRED HAYWOOD & Assoc.

ALICE TAYLOR, CLERK
BY *[Signature]* D.C.

DRAWN BY		SCALE	
FRED HAYWOOD & ASSOCIATES		1"=100'	
DATE		APPROVED BY	
2-14-68		J. L. SCRAPE, JR.	