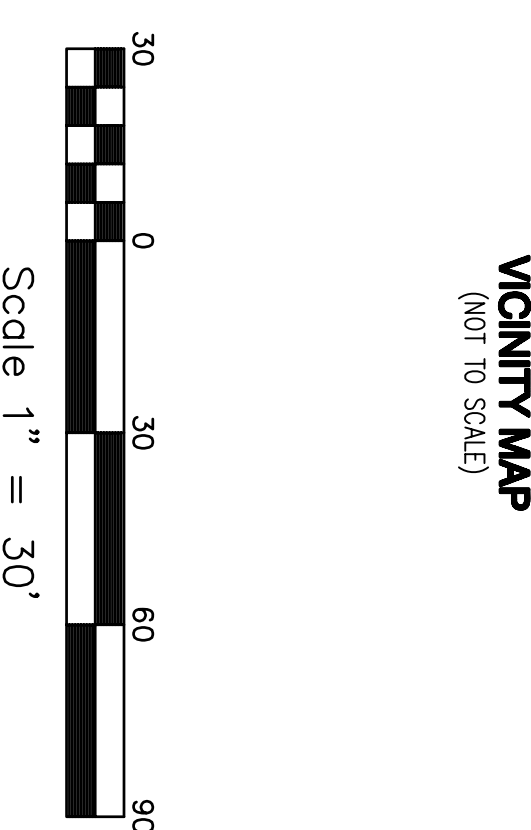
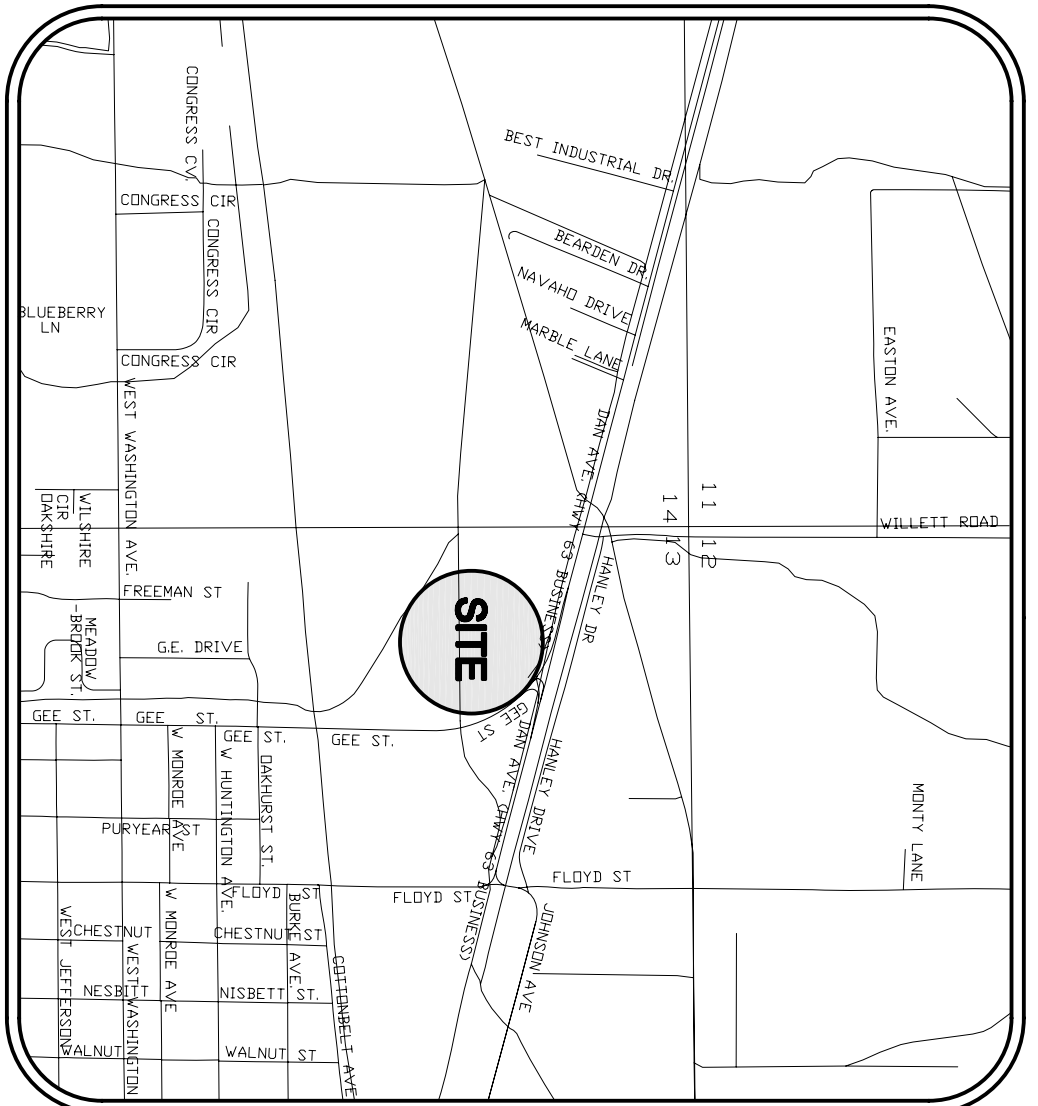


**SITE PLAN SPECIFICATIONS**

- NAME OF THE DEVELOPER OR SUBDIVISION.
- ADDRESS AND LOT NUMBER OF THE PROPERTY.
- DATE OF THE SURVEY.
- LOCATION MAP.
- INCLUDED ON DRAWING: DATE NUMBERS, EX. NUMBER, AND SPACINGS FOR ALL OWNERS OF THE PROPERTY AND THE APPLICANT. ROBERT KILPATRICK, P.E. #197443890 JONESBORO, ARKANSAS
- NORTH ARROW.
- INCLUDED ON DRAWING: SCALE OF ONE INCH (1") EQUALS FIFTY FEET (50') AND A GRAPHIC SCALE INCLUDED.
- INCLUDED ON DRAWING: PROFESSIONAL SEAL, REGISTERED PROFESSIONAL ENGINEER, ARKANSAS, JONESBORO, CRAIGHEAD COUNTY, ARKANSAS.
- DATE ON PLANS.
- DESIGNING ENGINEER.
- NAME, ADDRESS, AND TELEPHONE NUMBER OF ALL PROFESSIONAL CONSULTANTS.
- SEAL OF THE APPROPRIATE PROFESSIONAL REGISTERED IN THE STATE OF ARKANSAS.
- ACROSSAGE AND SQUARE FOOTAGE OF THE SITE.
- INCLUDED ON DRAWING: 1) ANNUAL SERVICES (STREET, FIRE AND REAR BY ORDINANCE) INCLUDED ON DRAWING. 2) FLOOD PLANNING AND FLOODPLAIN BOUNDARIES, IF NOT AFFECTED, INCLUDED ON DRAWING. 3) EXISTING AND PROPOSED LAND CONTOURS (2' MAX.). 4) EXISTING AND PROPOSED LOT LINES AND CORNERS. 5) ALL NAMES AND ADDRESSES OF ALL OWNERS OF ADJACENT PROPERTY. 6) NOT APPLICABLE. 7) ALL DIMENSIONS MEASURED TO THE CORNER. 8) VALUE OF ALL TREE BRANCHES AND ANGLES AS DIMENSIONED IN FEET AND INCHES. 9) INCLUDED ON DRAWING: 1) ALL DIMENSIONS OF ALL BUILDINGS LOCATED ON THE SUBJECT SITE. 2) ALL PROPOSED IMPROVEMENTS IN THEIR RELATIONSHIP TO CONDORES. 3) ALL PROPOSED IMPROVEMENTS IN THEIR RELATIONSHIP TO CONDORES. 4) ALL PROPOSED IMPROVEMENTS IN THEIR RELATIONSHIP TO CONDORES. 5) ALL PROPOSED IMPROVEMENTS IN THEIR RELATIONSHIP TO CONDORES. 6) ALL PROPOSED IMPROVEMENTS IN THEIR RELATIONSHIP TO CONDORES. 7) ALL PROPOSED IMPROVEMENTS IN THEIR RELATIONSHIP TO CONDORES. 8) ALL PROPOSED IMPROVEMENTS IN THEIR RELATIONSHIP TO CONDORES. 9) ALL PROPOSED IMPROVEMENTS IN THEIR RELATIONSHIP TO CONDORES.
- INCLUDED ON DRAWING: 22) UTILITIES INCLUDING:
  - A. LOCATION, SIZE AND TYPE OF WATER MAINS AND SERVICE LINES.
  - B. LOCATION, SIZE AND TYPE OF SEWER MAINS AND SERVICE LINES.
  - C. LOCATION, SIZE AND TYPE OF SANITARY SEWER MAINS AND SERVICE LINES.
  - D. DATE NUMBERING PLANS WERE SUBMITTED TO THE ARKANSAS HEALTH DEPARTMENT.
  - E. LOCATION OF EXISTING ELECTRICAL UTILITIES AND ROUTE SERVICE LINES WITH THE LOCATION AND SIZE OF HUBBUSTERS INCLUDING TYPE OF SCREENING.
  - F. LOCATION AND SIZE OF HUBBUSTERS INCLUDING TYPE OF SCREENING.
  - G. LOCATION AND SIZE OF HUBBUSTERS INCLUDING TYPE OF SCREENING.
  - H. LOCATION AND SIZE OF HUBBUSTERS INCLUDING TYPE OF SCREENING.
  - I. LOCATION AND SIZE OF HUBBUSTERS INCLUDING TYPE OF SCREENING.
  - J. LOCATION AND SIZE OF HUBBUSTERS INCLUDING TYPE OF SCREENING.
  - K. LOCATION AND SIZE OF HUBBUSTERS INCLUDING TYPE OF SCREENING.
  - L. LOCATION AND SIZE OF HUBBUSTERS INCLUDING TYPE OF SCREENING.
  - M. LOCATION AND SIZE OF HUBBUSTERS INCLUDING TYPE OF SCREENING.
  - N. LOCATION AND SIZE OF HUBBUSTERS INCLUDING TYPE OF SCREENING.
  - O. LOCATION AND SIZE OF HUBBUSTERS INCLUDING TYPE OF SCREENING.
  - P. LOCATION AND SIZE OF HUBBUSTERS INCLUDING TYPE OF SCREENING.
  - Q. LOCATION AND SIZE OF HUBBUSTERS INCLUDING TYPE OF SCREENING.
  - R. LOCATION AND SIZE OF HUBBUSTERS INCLUDING TYPE OF SCREENING.
  - S. LOCATION AND SIZE OF HUBBUSTERS INCLUDING TYPE OF SCREENING.
  - T. LOCATION AND SIZE OF HUBBUSTERS INCLUDING TYPE OF SCREENING.
  - U. LOCATION AND SIZE OF HUBBUSTERS INCLUDING TYPE OF SCREENING.
  - V. LOCATION AND SIZE OF HUBBUSTERS INCLUDING TYPE OF SCREENING.
  - W. LOCATION AND SIZE OF HUBBUSTERS INCLUDING TYPE OF SCREENING.
  - X. LOCATION AND SIZE OF HUBBUSTERS INCLUDING TYPE OF SCREENING.
  - Y. LOCATION AND SIZE OF HUBBUSTERS INCLUDING TYPE OF SCREENING.
  - Z. LOCATION AND SIZE OF HUBBUSTERS INCLUDING TYPE OF SCREENING.
- INCLUDED ON DRAWING: 23) BRANCHES PLANS PREPARED AND SEALED BY A CIVIL ENGINEER, ETC.
- INCLUDED ON DRAWING: 24) PROFESSIONAL SEAL AND SIGNATURE OF THE REGISTERED PROFESSIONAL ENGINEER, ARKANSAS.
- INCLUDED ON DRAWING: 25) PROFESSIONAL SEAL AND SIGNATURE OF THE REGISTERED PROFESSIONAL ENGINEER, ARKANSAS.
- INCLUDED ON DRAWING: 26) PROFESSIONAL SEAL AND SIGNATURE OF THE REGISTERED PROFESSIONAL ENGINEER, ARKANSAS.
- INCLUDED ON DRAWING: 27) PROFESSIONAL SEAL AND SIGNATURE OF THE REGISTERED PROFESSIONAL ENGINEER, ARKANSAS.
- INCLUDED ON DRAWING: 28) PROFESSIONAL SEAL AND SIGNATURE OF THE REGISTERED PROFESSIONAL ENGINEER, ARKANSAS.
- INCLUDED ON DRAWING: 29) PROFESSIONAL SEAL AND SIGNATURE OF THE REGISTERED PROFESSIONAL ENGINEER, ARKANSAS.
- INCLUDED ON DRAWING: 30) PROFESSIONAL SEAL AND SIGNATURE OF THE REGISTERED PROFESSIONAL ENGINEER, ARKANSAS.
- INCLUDED ON DRAWING: 31) PROFESSIONAL SEAL AND SIGNATURE OF THE REGISTERED PROFESSIONAL ENGINEER, ARKANSAS.
- INCLUDED ON DRAWING: 32) PROFESSIONAL SEAL AND SIGNATURE OF THE REGISTERED PROFESSIONAL ENGINEER, ARKANSAS.
- INCLUDED ON DRAWING: 33) PROFESSIONAL SEAL AND SIGNATURE OF THE REGISTERED PROFESSIONAL ENGINEER, ARKANSAS.
- INCLUDED ON DRAWING: 34) PROFESSIONAL SEAL AND SIGNATURE OF THE REGISTERED PROFESSIONAL ENGINEER, ARKANSAS.
- INCLUDED ON DRAWING: 35) PROFESSIONAL SEAL AND SIGNATURE OF THE REGISTERED PROFESSIONAL ENGINEER, ARKANSAS.
- INCLUDED ON DRAWING: 36) PROFESSIONAL SEAL AND SIGNATURE OF THE REGISTERED PROFESSIONAL ENGINEER, ARKANSAS.
- INCLUDED ON DRAWING: 37) PROFESSIONAL SEAL AND SIGNATURE OF THE REGISTERED PROFESSIONAL ENGINEER, ARKANSAS.
- INCLUDED ON DRAWING: 38) PROFESSIONAL SEAL AND SIGNATURE OF THE REGISTERED PROFESSIONAL ENGINEER, ARKANSAS.
- INCLUDED ON DRAWING: 39) PROFESSIONAL SEAL AND SIGNATURE OF THE REGISTERED PROFESSIONAL ENGINEER, ARKANSAS.
- INCLUDED ON DRAWING: 40) PROFESSIONAL SEAL AND SIGNATURE OF THE REGISTERED PROFESSIONAL ENGINEER, ARKANSAS.
- INCLUDED ON DRAWING: 41) PROFESSIONAL SEAL AND SIGNATURE OF THE REGISTERED PROFESSIONAL ENGINEER, ARKANSAS.
- INCLUDED ON DRAWING: 42) PROFESSIONAL SEAL AND SIGNATURE OF THE REGISTERED PROFESSIONAL ENGINEER, ARKANSAS.
- INCLUDED ON DRAWING: 43) PROFESSIONAL SEAL AND SIGNATURE OF THE REGISTERED PROFESSIONAL ENGINEER, ARKANSAS.
- INCLUDED ON DRAWING: 44) PROFESSIONAL SEAL AND SIGNATURE OF THE REGISTERED PROFESSIONAL ENGINEER, ARKANSAS.
- INCLUDED ON DRAWING: 45) PROFESSIONAL SEAL AND SIGNATURE OF THE REGISTERED PROFESSIONAL ENGINEER, ARKANSAS.
- INCLUDED ON DRAWING: 46) PROFESSIONAL SEAL AND SIGNATURE OF THE REGISTERED PROFESSIONAL ENGINEER, ARKANSAS.
- INCLUDED ON DRAWING: 47) PROFESSIONAL SEAL AND SIGNATURE OF THE REGISTERED PROFESSIONAL ENGINEER, ARKANSAS.
- INCLUDED ON DRAWING: 48) PROFESSIONAL SEAL AND SIGNATURE OF THE REGISTERED PROFESSIONAL ENGINEER, ARKANSAS.
- INCLUDED ON DRAWING: 49) PROFESSIONAL SEAL AND SIGNATURE OF THE REGISTERED PROFESSIONAL ENGINEER, ARKANSAS.
- INCLUDED ON DRAWING: 50) PROFESSIONAL SEAL AND SIGNATURE OF THE REGISTERED PROFESSIONAL ENGINEER, ARKANSAS.
- INCLUDED ON DRAWING: 51) PROFESSIONAL SEAL AND SIGNATURE OF THE REGISTERED PROFESSIONAL ENGINEER, ARKANSAS.
- INCLUDED ON DRAWING: 52) PROFESSIONAL SEAL AND SIGNATURE OF THE REGISTERED PROFESSIONAL ENGINEER, ARKANSAS.
- INCLUDED ON DRAWING: 53) PROFESSIONAL SEAL AND SIGNATURE OF THE REGISTERED PROFESSIONAL ENGINEER, ARKANSAS.
- INCLUDED ON DRAWING: 54) PROFESSIONAL SEAL AND SIGNATURE OF THE REGISTERED PROFESSIONAL ENGINEER, ARKANSAS.
- INCLUDED ON DRAWING: 55) PROFESSIONAL SEAL AND SIGNATURE OF THE REGISTERED PROFESSIONAL ENGINEER, ARKANSAS.
- INCLUDED ON DRAWING: 56) PROFESSIONAL SEAL AND SIGNATURE OF THE REGISTERED PROFESSIONAL ENGINEER, ARKANSAS.
- INCLUDED ON DRAWING: 57) PROFESSIONAL SEAL AND SIGNATURE OF THE REGISTERED PROFESSIONAL ENGINEER, ARKANSAS.
- INCLUDED ON DRAWING: 58) PROFESSIONAL SEAL AND SIGNATURE OF THE REGISTERED PROFESSIONAL ENGINEER, ARKANSAS.
- INCLUDED ON DRAWING: 59) PROFESSIONAL SEAL AND SIGNATURE OF THE REGISTERED PROFESSIONAL ENGINEER, ARKANSAS.
- INCLUDED ON DRAWING: 60) PROFESSIONAL SEAL AND SIGNATURE OF THE REGISTERED PROFESSIONAL ENGINEER, ARKANSAS.
- INCLUDED ON DRAWING: 61) PROFESSIONAL SEAL AND SIGNATURE OF THE REGISTERED PROFESSIONAL ENGINEER, ARKANSAS.
- INCLUDED ON DRAWING: 62) PROFESSIONAL SEAL AND SIGNATURE OF THE REGISTERED PROFESSIONAL ENGINEER, ARKANSAS.
- INCLUDED ON DRAWING: 63) PROFESSIONAL SEAL AND SIGNATURE OF THE REGISTERED PROFESSIONAL ENGINEER, ARKANSAS.
- INCLUDED ON DRAWING: 64) PROFESSIONAL SEAL AND SIGNATURE OF THE REGISTERED PROFESSIONAL ENGINEER, ARKANSAS.
- INCLUDED ON DRAWING: 65) PROFESSIONAL SEAL AND SIGNATURE OF THE REGISTERED PROFESSIONAL ENGINEER, ARKANSAS.
- INCLUDED ON DRAWING: 66) PROFESSIONAL SEAL AND SIGNATURE OF THE REGISTERED PROFESSIONAL ENGINEER, ARKANSAS.
- INCLUDED ON DRAWING: 67) PROFESSIONAL SEAL AND SIGNATURE OF THE REGISTERED PROFESSIONAL ENGINEER, ARKANSAS.
- INCLUDED ON DRAWING: 68) PROFESSIONAL SEAL AND SIGNATURE OF THE REGISTERED PROFESSIONAL ENGINEER, ARKANSAS.
- INCLUDED ON DRAWING: 69) PROFESSIONAL SEAL AND SIGNATURE OF THE REGISTERED PROFESSIONAL ENGINEER, ARKANSAS.
- INCLUDED ON DRAWING: 70) PROFESSIONAL SEAL AND SIGNATURE OF THE REGISTERED PROFESSIONAL ENGINEER, ARKANSAS.
- INCLUDED ON DRAWING: 71) PROFESSIONAL SEAL AND SIGNATURE OF THE REGISTERED PROFESSIONAL ENGINEER, ARKANSAS.
- INCLUDED ON DRAWING: 72) PROFESSIONAL SEAL AND SIGNATURE OF THE REGISTERED PROFESSIONAL ENGINEER, ARKANSAS.
- INCLUDED ON DRAWING: 73) PROFESSIONAL SEAL AND SIGNATURE OF THE REGISTERED PROFESSIONAL ENGINEER, ARKANSAS.
- INCLUDED ON DRAWING: 74) PROFESSIONAL SEAL AND SIGNATURE OF THE REGISTERED PROFESSIONAL ENGINEER, ARKANSAS.
- INCLUDED ON DRAWING: 75) PROFESSIONAL SEAL AND SIGNATURE OF THE REGISTERED PROFESSIONAL ENGINEER, ARKANSAS.
- INCLUDED ON DRAWING: 76) PROFESSIONAL SEAL AND SIGNATURE OF THE REGISTERED PROFESSIONAL ENGINEER, ARKANSAS.
- INCLUDED ON DRAWING: 77) PROFESSIONAL SEAL AND SIGNATURE OF THE REGISTERED PROFESSIONAL ENGINEER, ARKANSAS.
- INCLUDED ON DRAWING: 78) PROFESSIONAL SEAL AND SIGNATURE OF THE REGISTERED PROFESSIONAL ENGINEER, ARKANSAS.
- INCLUDED ON DRAWING: 79) PROFESSIONAL SEAL AND SIGNATURE OF THE REGISTERED PROFESSIONAL ENGINEER, ARKANSAS.
- INCLUDED ON DRAWING: 80) PROFESSIONAL SEAL AND SIGNATURE OF THE REGISTERED PROFESSIONAL ENGINEER, ARKANSAS.
- INCLUDED ON DRAWING: 81) PROFESSIONAL SEAL AND SIGNATURE OF THE REGISTERED PROFESSIONAL ENGINEER, ARKANSAS.
- INCLUDED ON DRAWING: 82) PROFESSIONAL SEAL AND SIGNATURE OF THE REGISTERED PROFESSIONAL ENGINEER, ARKANSAS.
- INCLUDED ON DRAWING: 83) PROFESSIONAL SEAL AND SIGNATURE OF THE REGISTERED PROFESSIONAL ENGINEER, ARKANSAS.
- INCLUDED ON DRAWING: 84) PROFESSIONAL SEAL AND SIGNATURE OF THE REGISTERED PROFESSIONAL ENGINEER, ARKANSAS.
- INCLUDED ON DRAWING: 85) PROFESSIONAL SEAL AND SIGNATURE OF THE REGISTERED PROFESSIONAL ENGINEER, ARKANSAS.
- INCLUDED ON DRAWING: 86) PROFESSIONAL SEAL AND SIGNATURE OF THE REGISTERED PROFESSIONAL ENGINEER, ARKANSAS.
- INCLUDED ON DRAWING: 87) PROFESSIONAL SEAL AND SIGNATURE OF THE REGISTERED PROFESSIONAL ENGINEER, ARKANSAS.
- INCLUDED ON DRAWING: 88) PROFESSIONAL SEAL AND SIGNATURE OF THE REGISTERED PROFESSIONAL ENGINEER, ARKANSAS.
- INCLUDED ON DRAWING: 89) PROFESSIONAL SEAL AND SIGNATURE OF THE REGISTERED PROFESSIONAL ENGINEER, ARKANSAS.
- INCLUDED ON DRAWING: 90) PROFESSIONAL SEAL AND SIGNATURE OF THE REGISTERED PROFESSIONAL ENGINEER, ARKANSAS.
- INCLUDED ON DRAWING: 91) PROFESSIONAL SEAL AND SIGNATURE OF THE REGISTERED PROFESSIONAL ENGINEER, ARKANSAS.
- INCLUDED ON DRAWING: 92) PROFESSIONAL SEAL AND SIGNATURE OF THE REGISTERED PROFESSIONAL ENGINEER, ARKANSAS.
- INCLUDED ON DRAWING: 93) PROFESSIONAL SEAL AND SIGNATURE OF THE REGISTERED PROFESSIONAL ENGINEER, ARKANSAS.
- INCLUDED ON DRAWING: 94) PROFESSIONAL SEAL AND SIGNATURE OF THE REGISTERED PROFESSIONAL ENGINEER, ARKANSAS.
- INCLUDED ON DRAWING: 95) PROFESSIONAL SEAL AND SIGNATURE OF THE REGISTERED PROFESSIONAL ENGINEER, ARKANSAS.
- INCLUDED ON DRAWING: 96) PROFESSIONAL SEAL AND SIGNATURE OF THE REGISTERED PROFESSIONAL ENGINEER, ARKANSAS.
- INCLUDED ON DRAWING: 97) PROFESSIONAL SEAL AND SIGNATURE OF THE REGISTERED PROFESSIONAL ENGINEER, ARKANSAS.
- INCLUDED ON DRAWING: 98) PROFESSIONAL SEAL AND SIGNATURE OF THE REGISTERED PROFESSIONAL ENGINEER, ARKANSAS.
- INCLUDED ON DRAWING: 99) PROFESSIONAL SEAL AND SIGNATURE OF THE REGISTERED PROFESSIONAL ENGINEER, ARKANSAS.
- INCLUDED ON DRAWING: 100) PROFESSIONAL SEAL AND SIGNATURE OF THE REGISTERED PROFESSIONAL ENGINEER, ARKANSAS.

**LEGEND**

- TC - TOP OF CURB
- G - GUTTER
- X - ELEVATION LOCATION
- INV - INVERT ELEVATION
- PROPOSED INDEX CONTOUR
- PROPOSED INTERMEDIATE CONTOUR
- EXISTING INDEX CONTOUR
- EXISTING INTERMEDIATE CONTOUR



**GENERAL NOTES:**

- THE EAST OF THIS PROPERTY LIES WITHIN THE FLOODWAY AS SHOWN ON FEMA FIRM MAP PANEL 050100043 C, EFFECTIVE SEPTEMBER 27, 1991. THE REMAINING PORTION OF THE PROPERTY LIES WITHIN THE 100-YEAR FLOODPLAIN, ZONE AE, AS SHOWN ON SAID FEMA FIRM MAP PANEL. BASE FLOOD ELEVATION FOR THE SUBJECT PROPERTY IS A 291.00.
- SUBJECT PROPERTY IS CURRENTLY ZONED I-2. CURRENT ZONING SETBACKS ARE AS FOLLOWS:  
SIDE - 25.00'  
STREET - 100.00'  
REAR - 25.00'

**ENGINEERING NOTES:**

- CONTRACTOR IS RESPONSIBLE FOR INSTALLING AND MAINTAINING ADEQUATE EROSION/SEDIMENTATION CONTROL DURING ALL PHASES OF CONSTRUCTION.
- CONTRACTOR IS RESPONSIBLE FOR KEEPING MUD AND DEBRIS OFF CITY STREETS AND OFF OF PAVED DRIVEWAYS WHERE APPLICABLE. CLEAN UP IS REQUIRED DAILY.
- CONTRACTOR IS RESPONSIBLE FOR THE REPLACEMENT OF SIDEWALK, CURB AND GUTTER AND/OR ASPHALT/CONCRETE DAMAGED DURING CONSTRUCTION.
- DEVIATION FROM ENGINEERING DESIGN PLANS IS NOT PERMITTED. ANY CHANGE IN THE CONSTRUCTION DOCUMENTS THAT ARE NOT APPROVED BY THE ENGINEER WILL RESULT IN CONSTRUCTION TERMINATION UNTIL A RESUBMISSION IS MET. ANY UNAPPROVED MODIFICATION WILL RESULT IN CONSTRUCTION TERMINATION UNTIL A RESUBMISSION IS MET. ANY UNAPPROVED MODIFICATION WILL RESULT IN CONSTRUCTION TERMINATION UNTIL A RESUBMISSION IS MET. ANY UNAPPROVED MODIFICATION WILL RESULT IN CONSTRUCTION TERMINATION UNTIL A RESUBMISSION IS MET. ANY UNAPPROVED MODIFICATION WILL RESULT IN CONSTRUCTION TERMINATION UNTIL A RESUBMISSION IS MET.
- CONTRACTOR SHALL NOTIFY THE ENGINEER AND OWNER/DEVELOPER OF ANY INFORMATION FOUND IN THE FIELD THAT IS DIFFERENT FROM WHAT IS SHOWN ON THESE DESIGN PLANS.
- THE GRADING OF THE PROPERTY SHALL BE LIMITED TO DAYLIGHT HOURS.
- ALL FILL SHALL BE PLACED IN 8" MAXIMUM LIFTS AND COMPACTED TO 95% MOISTURE PROCTOR.
- ALL DISTURBED AREAS ARE TO BE SEEDED AND STABILIZED UPON COMMENCEMENT OF EARTHWORK.
- CONTRACTOR IS RESPONSIBLE FOR ALL CITY, STATE, OR FEDERAL PERMIT FEES ASSOCIATED WITH CONSTRUCTION.
- A GRADING PERMIT SHALL BE OBTAINED FROM CITY OF JONESBORO PRIOR TO THE COMMENCEMENT OF EARTHWORK.

**SITE DEVELOPMENT PLAN**

221E N. GEE STREET  
JONESBORO, CRAIGHEAD COUNTY, ARKANSAS  
HAYWOOD, KENWARD BARE & ASSOCIATES, INC.  
CIVIL ENGINEERING & SURVEYING - PLANNING  
1801 LATOURETTE DRIVE  
JONESBORO, ARKANSAS 72404  
TEL 870-932-2919 FAX 870-932-1078

**CERTIFICATE OF AUTHORIZATION**  
NO. 234  
HAYWOOD, KENWARD BARE & ASSOCIATES, INC.  
STATE OF ARKANSAS  
PROFESSIONAL ENGINEER  
ROBERT KILPATRICK  
NO. 6852  
EXPIRES 09/23/08

**REVISIONS**

DATE	BY	DESCRIPTION
09/23/08	JHB	1-OF-1
	RCH	SCALE 1"=30'
		DRAWING NO. 61-80

PROJECT NO. K009-0001-20  
DRAWN BY JHB  
CHECKED BY RCH  
SCALE 1"=30'  
DATE 09/23/08

BASIS OF BEARING: SURVEY BY HAYWOOD, KENWARD, & ASSOC. INC. FIELD IN BOOK F, PAGE 100, DATED 6-7-79