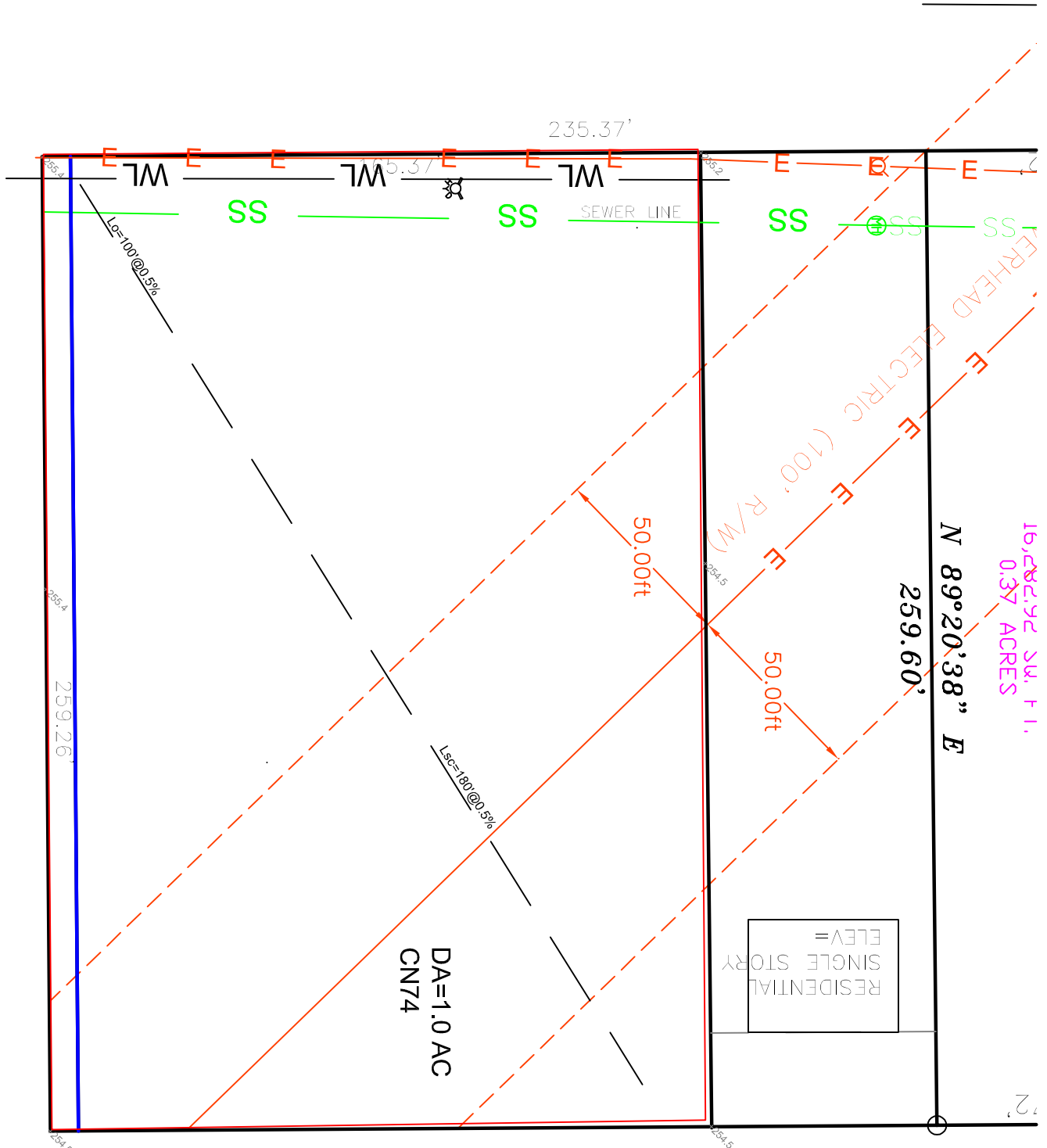


APT DR. APARTMENTS
EXISTING CONDITIONS
DRAINAGE AREA MAP
N.T.S.

DRAINAGE AREA = 1.0 AC
CN74 = 1.0 AC

C/L APT DR. (HWY 163 SPUR)



16,482.72 SQ. FT.
0.37 ACRES

FD 11
COMM
OF ST
29 & "