

EXHIBIT "A"

ATTACHED TO CONTRACT BETWEEN
BNSF RAILWAY COMPANY
AND

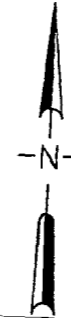
CITY OF JONESBORO

TRIM LINE

SCALE: 1 IN. = 1600 FT.
SPRINGFIELD DIV.
THAYER SOUTH SUBDIV. L.S. 1001
DATE 12/17/2010 REV. DATE 12/22/2011

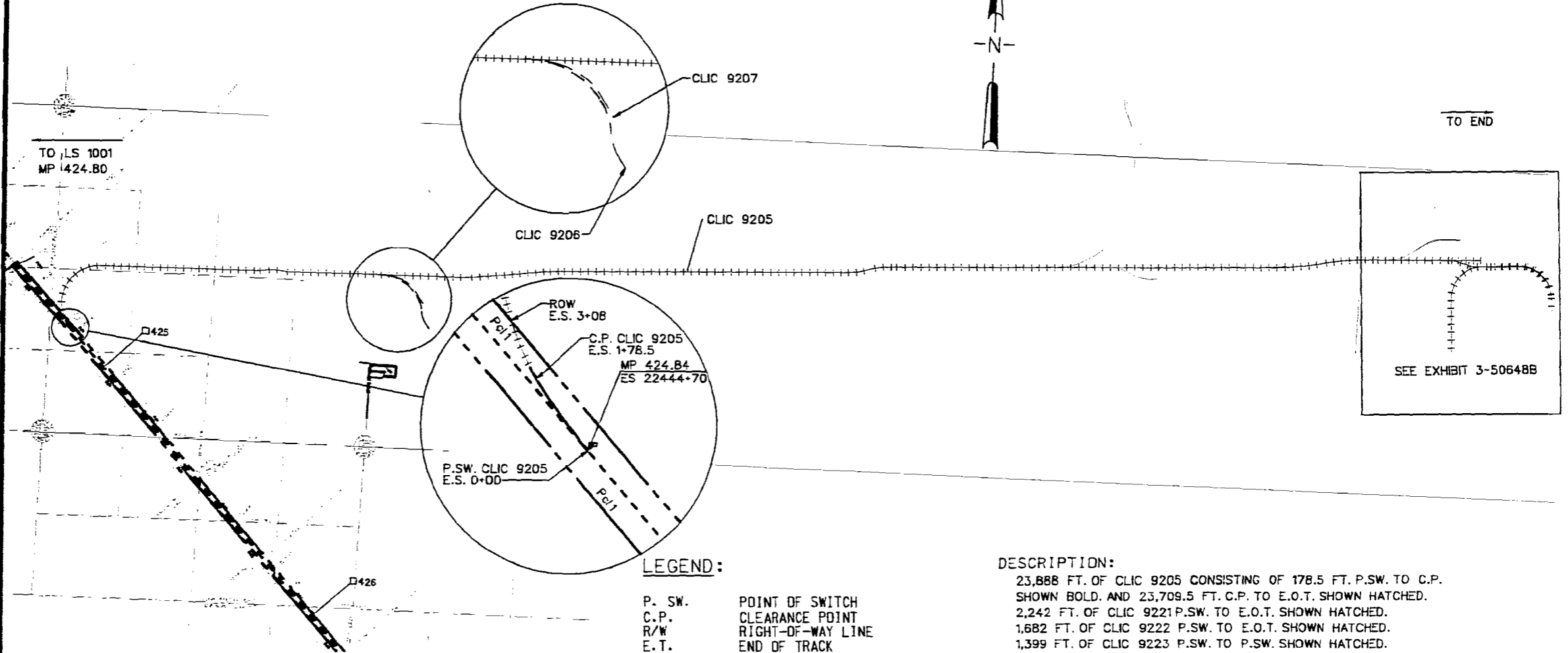


SECTION: 26, 25, 30, 29, 28, 27
TOWNSHIP: 14N
RANGE: 5E
MERIDIAN: 5PM



TO END

TO /LS 1001
MP 424.B0



SEE EXHIBIT 3-506488

LEGEND:

- P. SW. POINT OF SWITCH
- C.P. CLEARANCE POINT
- R/W RIGHT-OF-WAY LINE
- E.T. END OF TRACK
- +++ INDUSTRY OWNED TRACKAGE
- COMPANY OWNED TRACKAGE
- THIRD PARTY TRACKAGE

DESCRIPTION:

23,888 FT. OF CLIC 9205 CONSISTING OF 178.5 FT. P.S.W. TO C.P. SHOWN BOLD. AND 23,709.5 FT. C.P. TO E.O.T. SHOWN HATCHED.
 2,242 FT. OF CLIC 9221 P.S.W. TO E.O.T. SHOWN HATCHED.
 1,682 FT. OF CLIC 9222 P.S.W. TO E.O.T. SHOWN HATCHED.
 1,399 FT. OF CLIC 9223 P.S.W. TO P.S.W. SHOWN HATCHED.
 30 FT. OF CLIC 9224 P.S.W. TO E.O.T. SHOWN HATCHED.

NEAR NETTLETON
COUNTY OF CRAIGHEAD

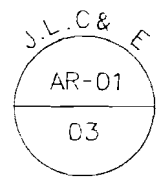
STATE OF AR

JHL

EXHIBIT "A"
 ATTACHED TO CONTRACT BETWEEN
BNSF RAILWAY COMPANY
 AND
CITY OF JONESBORO

TRIM LINE

SCALE: 1 IN. = 200 FT.
 SPRINGFIELD DIV.
 THAYER SOUTH SUBDIV. L.S. 1001
 DATE 12/17/2010 REV. DATE 12/22/2011



SECTION: 28.27
 TOWNSHIP: 14N
 RANGE: 05E
 MERIDIAN: 5PM

MATCH 3-50648A

TO LS 1001
 MP 424.80

MP 284.32
 ES 230+50

P.S.W 0+00 CLIC 9222
 P.S.W 0+00 CLIC 9223

TO END

E.S. 9+54 CLIC 9222

P.S.W 0+00 CLIC 9224-
 12+84 CLIC 9222

CLIC 9224
 E.T. 0+30

E.S. 11+61 CLIC 9222

CLIC 9222

CLIC 9222
 E.T. 25+63

CLIC 9221 P.S.W 0+00-
 CLIC 9205 230+50

CLIC 9205

CLIC 9205
 E.T. 238+81

CLIC 9221

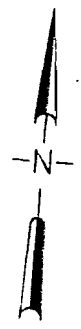
CLIC 9223

CLIC 9223

CLIC 9221

CLIC 9223 P.S.W 20+65-
 CLIC 9221 31+95

CLIC 9221
 E.T. 34+12



LEGEND:

- P. SW. POINT OF SWITCH
- C.P. CLEARANCE POINT
- R/W RIGHT-OF-WAY LINE
- E.T. END OF TRACK
- ++++ INDUSTRY OWNED TRACKAGE
- COMPANY OWNED TRACKAGE

NEAR NETTLETON
 COUNTY OF CRAIGHEAD

STATE OF AR

JHL