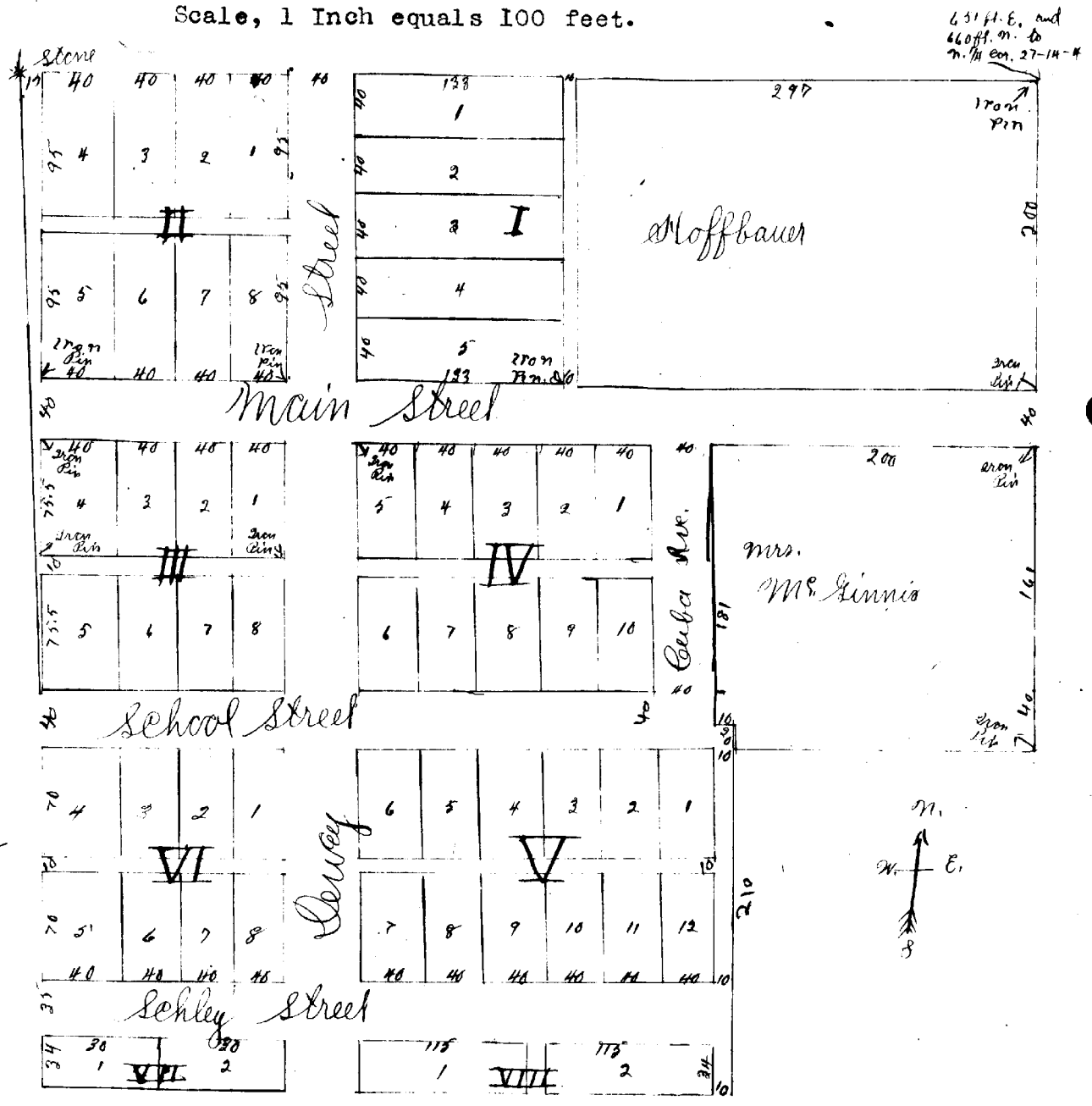


PLAT OF WATTS ADDITION TO NETTLETON.

Scale, 1 Inch equals 100 feet.



Jonesboro Arkansas, Aug. 17th, 1898.

I hereby certify that the above is a correct plat of a survey of Watts Addition to Nettleton Arkansas, made by me August 15th and 16th, 1898.

W.O. Bunce. C.E.

Being part of S-1/2 NE of NW-1/4 section 27, town 14 north, range 4 east, viz: Begin at northwest corner of Lot 58 of Pardew's Addition to Nettleton; Thence west 651 ft.; South 660 ft; East 462 ft; Thence East 190 ft; north 460 ft. to beginning, 9 acres. I hereby dedicate all Streets and Alleys in said Addition to the public use forever.

Witness my hand on this 19th, day of December, 1899.

F.C. Watts.

State of Arkansas,)
County of Craighead.)ss.

Be it remembered that on this day came before me the undersigned a Notary Public within and for the County aforesaid, duly commissioned and acting F.C. Watts to me well known as the grantor in the foregoing plat of Watts Addition to Nettleton and stated that he had executed the same for the consideration and purposes therein mentioned and set forth.

Witness my hand and seal as such Notary Public on this 19th, day of December 1899. (SEAL). My Commission expires July 24th, 1902.

Les J. Ware, N.P.

Filed for record December 19th, 1899.

R.H. West, Clerk.
By T.W. [Signature] D.C.